

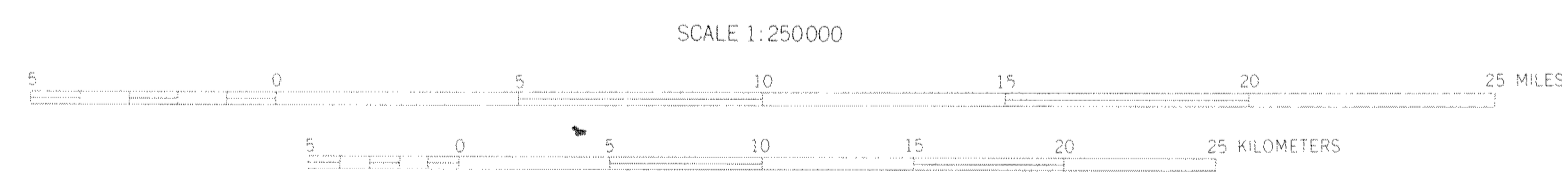
65

46



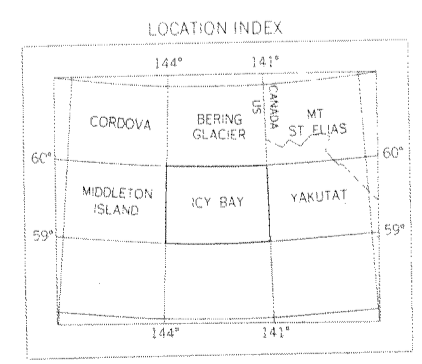
MAPPED, EDITED, AND PUBLISHED BY THE GEOLOGICAL SURVEY  
CONTROL BY USGS AND USC&GS  
TOPOGRAPHY BY PHOTOGRAMMETRIC METHODS FROM AERIAL PHOTOGRAPHS  
TAKEN 1957 FIELD ANNOTATED 1961 MAP NOT FIELD CHECKED  
SELECTED HYDROGRAPHIC DATA COMPILED FROM USC&GS  
CHARTS 2032 (1963) AND 2051 (1964) THIS INFORMATION  
IS NOT INTENDED FOR NAVIGATIONAL PURPOSES  
UNIVERSAL TRANSVERSE MERCATOR PROJECTION 1927 NORTH AMERICAN DATUM  
100,000 FOOT GRID BASED ON ALASKA COORDINATE SYSTEM ZONE 2  
10,000 METER UNIVERSAL TRANSVERSE MERCATOR GRID TICKS  
ZONE 7 SHOWN IN BLUE  
LAND LINES REPRESENT UNSURVEYED AND UNMARKED LOCATIONS  
PREDETERMINED BY THE BUREAU OF LAND MANAGEMENT  
FOLIOS CR 9 AND CR 10 COPPER RIVER MERIDIAN

DATE	ADDITIONS	BY



CONTOUR INTERVAL 200 FEET  
DATUM IS MEAN SEA LEVEL  
DEPTH CURVES AND SOUNDINGS IN FEET DATUM IS MEAN LOWER LOW WATER  
SHORELINE SHOWN REPRESENTS THE APPROXIMATE LINE OF MEAN HIGH WATER  
1961 MAGNETIC DECLINATION AT SOUTH EDGE OF SHEET VARIES FROM 27° TO 28° EAST  
THIS MAP IS AVAILABLE IN BOTH SHADED RELIEF AND CONTOUR EDITIONS  
FOR SALE BY U.S. GEOLOGICAL SURVEY  
FAIRBANKS, ALASKA, 99701, DENVER, COLORADO 80225, OR WASHINGTON, D.C. 20242  
A FOLDER DESCRIBING TOPOGRAPHIC MAPS AND SYMBOLS IS AVAILABLE ON REQUEST

TRAIL INVENTORY 9-12-73



A1121  
B8

ROAD CLASSIFICATION  
UNIMPROVED DIRT -----

ICY BAY, ALASKA  
N5906-W14100/60X180

LAB 47