

107-114 Feb. 16, 1946

NORTH ADDITION TO FAIRBANKS TOWNSITE U.S. SURVEY NO. 2159

LATITUDE 64°50'00"N. LONGITUDE 147°43'00"W

SCALE: 1 INCH = 75 FEET

AREA 26.16 ACRES

DECLINATION 31°15' E.

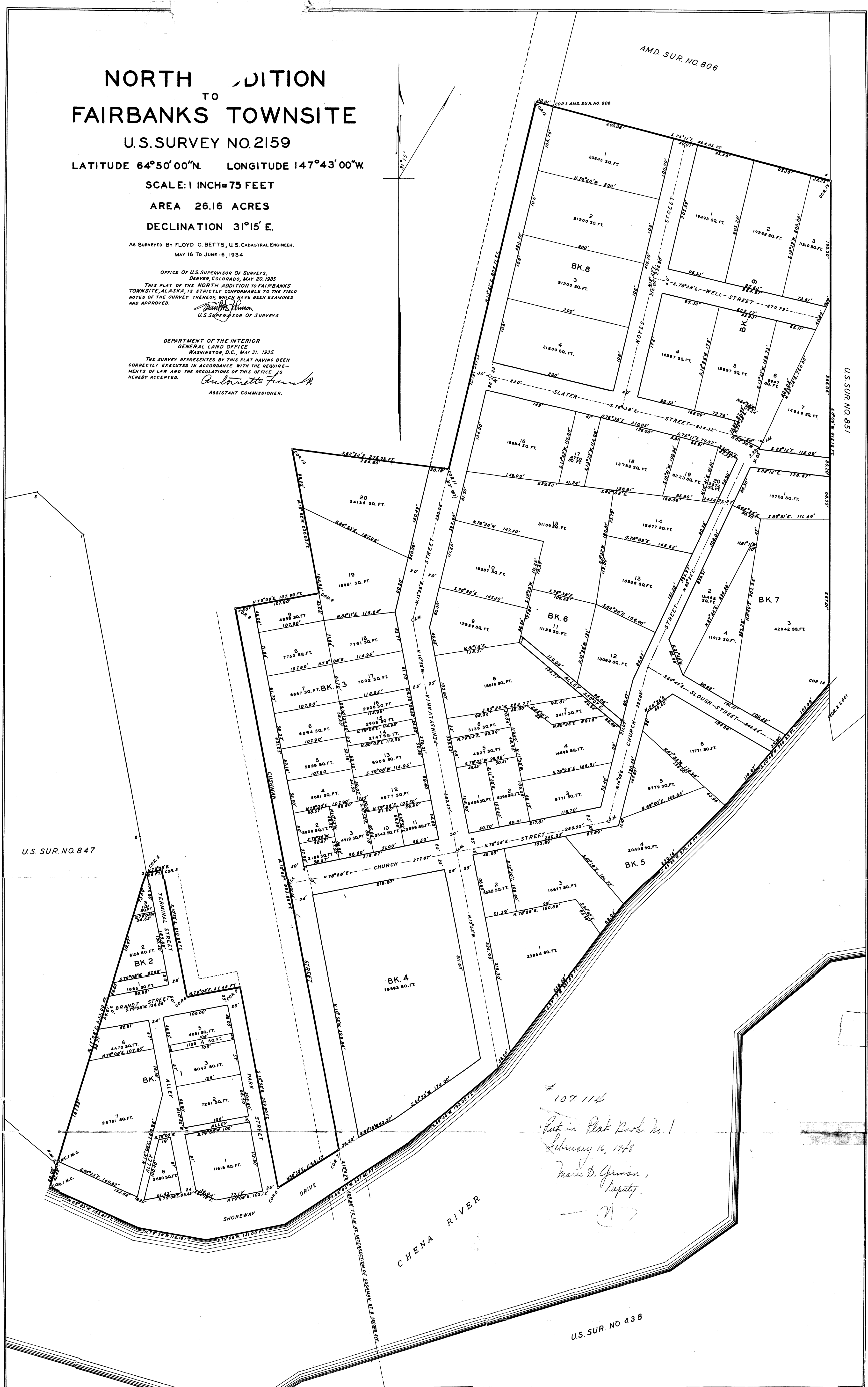
AS SURVEYED BY FLOYD G. BETTS, U.S. CADASTRAL ENGINEER.
MAY 16 TO JUNE 16, 1934

OFFICE OF U.S. SUPERVISOR OF SURVEYS,
DENVER, COLORADO, MAY 20, 1935
THIS PLAT OF THE NORTH ADDITION TO FAIRBANKS
TOWNSITE, ALASKA, IS STRICTLY CONFORMABLE TO THE FIELD
NOTES OF THE SURVEY THEREOF, WHICH HAVE BEEN EXAMINED
AND APPROVED.
Floyd G. Betts
U.S. SUPERVISOR OF SURVEYS.

DEPARTMENT OF THE INTERIOR
GENERAL LAND OFFICE
WASHINGTON, D.C., MAY 31, 1935.

THE SURVEY REPRESENTED BY THIS PLAT HAVING BEEN
CORRECTLY EXECUTED IN ACCORDANCE WITH THE REQUIRE-
MENTS OF LAW AND THE REGULATIONS OF THIS OFFICE IS
HEREBY ACCEPTED.

Antonette Frank
ASSISTANT COMMISSIONER.



107.114
Put in Plat Book No. 1
February 16, 1946
Marie D. Gorman,
Deputy.

W.C. 30