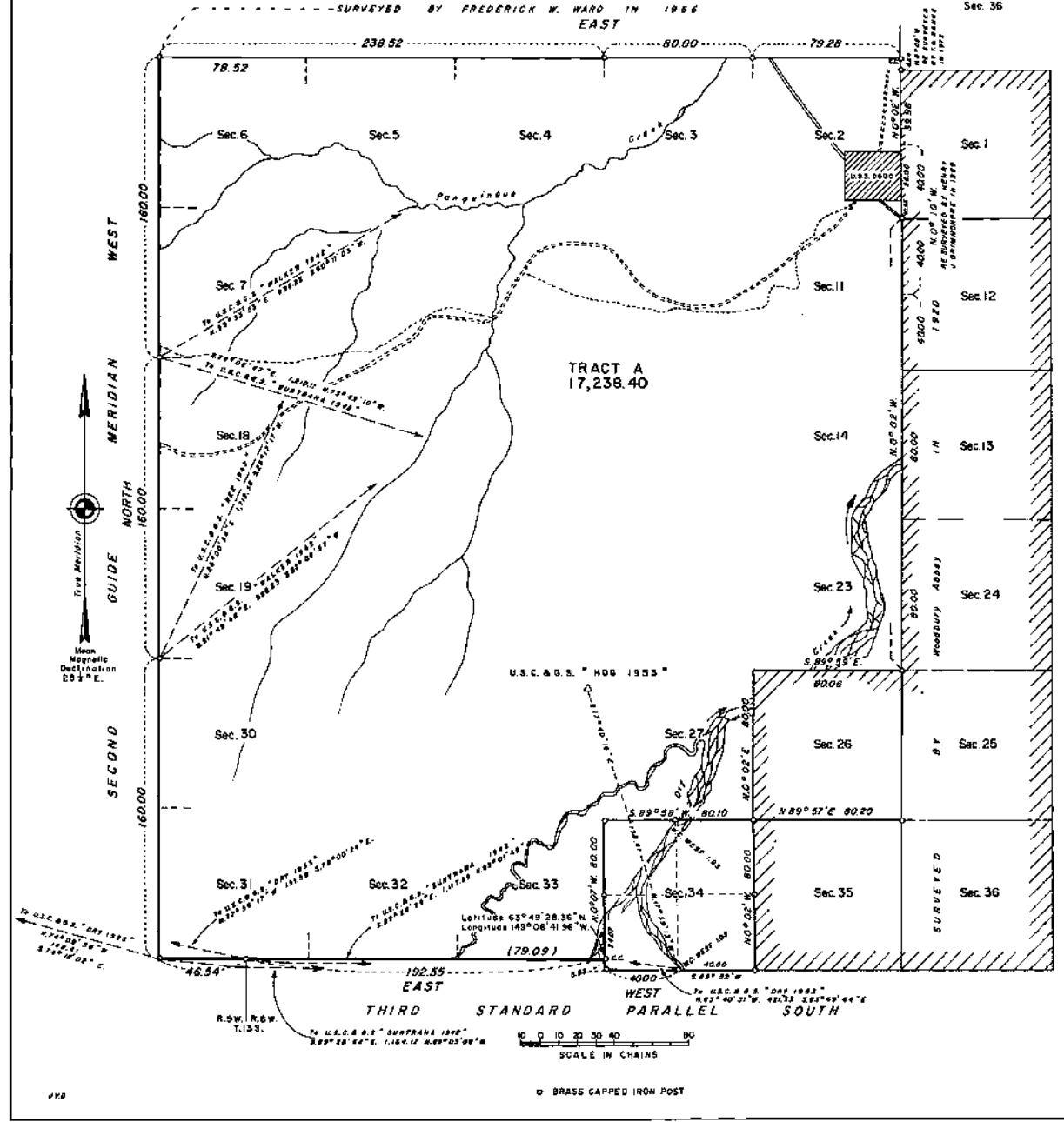


TOWNSHIP 12 SOUTH, RANGE 8 WEST, OF THE FAIRBANKS MERIDIAN, ALASKA



The east boundary, a portion of the north and south boundaries, and a portion of the subdivisional lines were surveyed by Woodbury Abbey in 1930. A portion of the north boundary was surveyed by Frederick W. Ward in 1966. A portion of the subdivisional lines were resurveyed by H. J. Grimmonde in 1969.

This plat represents the resurvey of a portion of the south boundary and a portion of the subdivisional lines, designed to restore the corners in their true original locations according to the best available evidence, and the survey of the west boundary and a portion of the south boundary, executed by Frederick W. Ward, Supervisory Cadastral Surveyor, and Tommy G. Banks, Cadastral Surveyor, July 15, 1968, through June 14, 1973, under Special Instructions dated and approved July 12, 1968, and Supplemental Special Instructions dated August 4, 1969, and approved August 5, 1969, for Group No. 216, Alaska.

The gross area surveyed embraces the entire township.

Gross Area Surveyed	23,076.33 Acres
Exclusions:	
U.S. Survey No. 5600	78.09 Acres
Previously Surveyed	5,759.84 Acres
Net Area Tract A	17,238.40 Acres

The hydrography shown on this plat was obtained from the best available U.S. Geological Survey maps.

UNITED STATES DEPARTMENT OF THE INTERIOR
BUREAU OF LAND MANAGEMENT
Washington, D.C. June 25, 1976

This plat is strictly conformable to the approved field notes, and the survey, having been correctly executed in accordance with the requirements of law and the regulations of this Bureau, is hereby accepted.

For the Director

Acting Chief, Division of Cadastral Survey