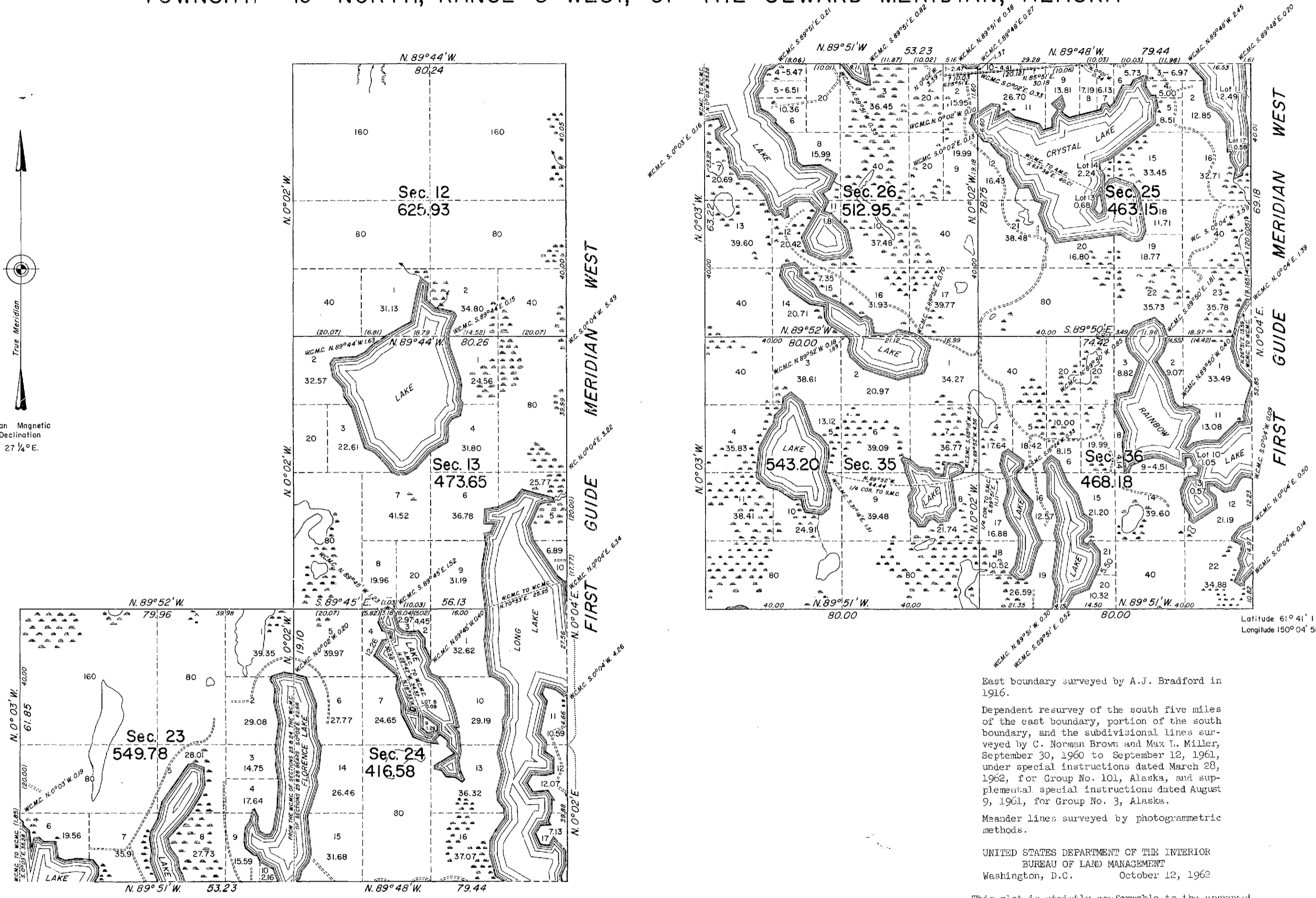
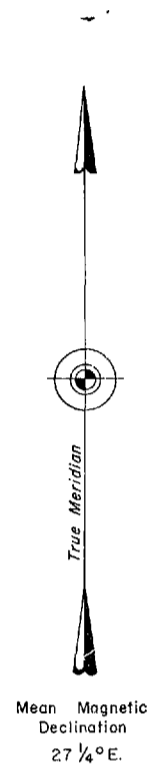
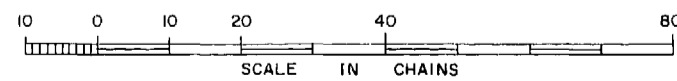


TOWNSHIP 19 NORTH, RANGE 5 WEST, OF THE SEWARD MERIDIAN, ALASKA



AREA SURVEYED 4,053.42 Acres



East boundary surveyed by A.J. Bradford in 1916.
Dependent resurvey of the south five miles of the east boundary, portion of the south boundary, and the subdivisional lines surveyed by C. Norman Brown and Max T. Miller, September 30, 1960 to September 12, 1961, under special instructions dated March 28, 1962, for Group No. 101, Alaska, and supplemental special instructions dated August 9, 1961, for Group No. 3, Alaska.
Meander lines surveyed by photogrammetric methods.
UNITED STATES DEPARTMENT OF THE INTERIOR
BUREAU OF LAND MANAGEMENT
Washington, D.C. October 12, 1962

This plat is strictly conformable to the approved field notes, and the survey, having been correctly executed in accordance with the requirements of law and the regulations of this Bureau, is hereby accepted.

For the Director

Chief, Division of Engineering

Latitude 61° 41' 11.576" N
Longitude 150° 04' 58.450" W