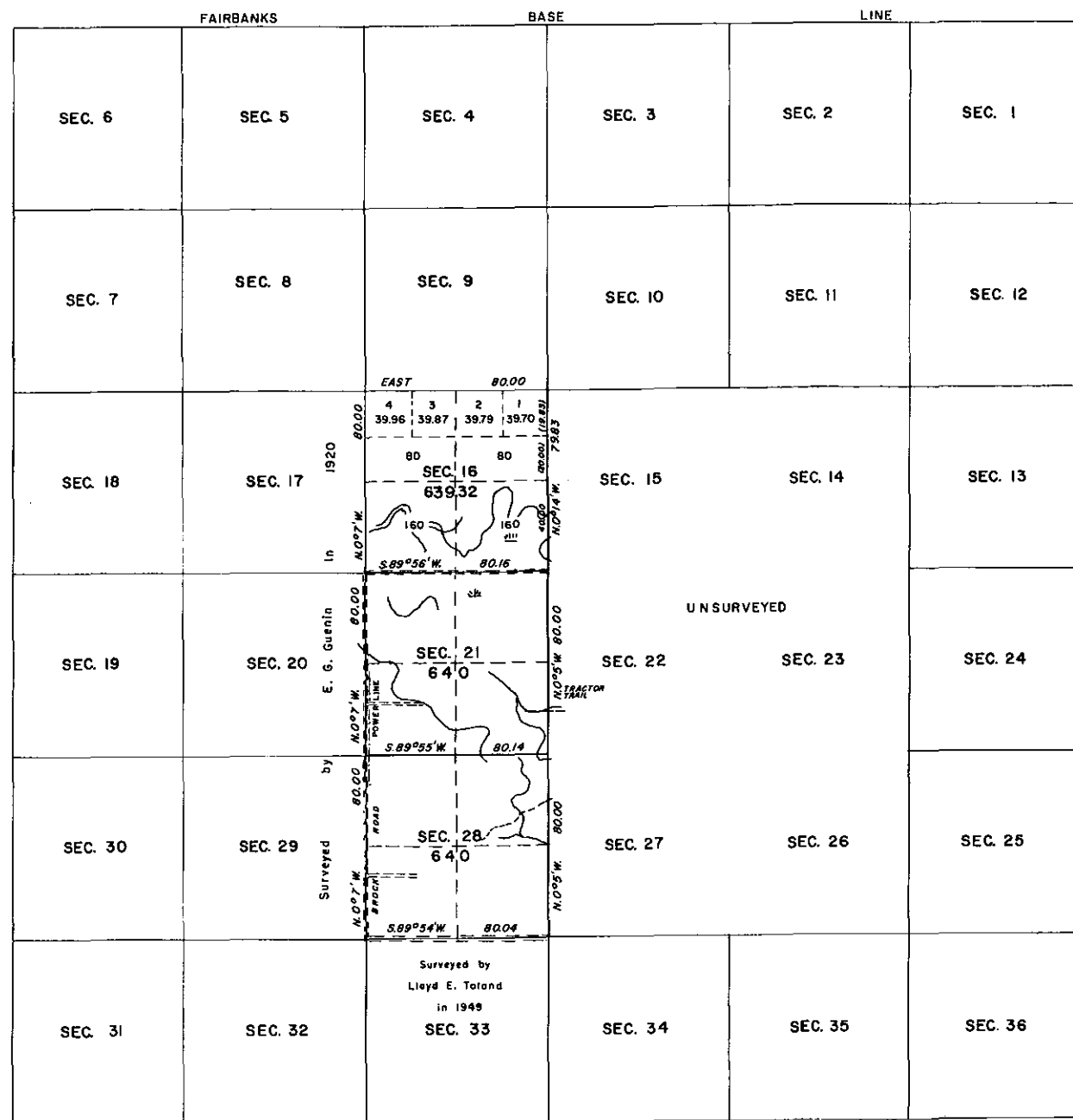


TOWNSHIP 1 SOUTH, RANGE 2 EAST OF THE FAIRBANKS MERIDIAN, ALASKA



A portion of the subdivisional lines surveyed by Kenneth C. Pettingill, April 13 to May 5, 1964, under Special Instructions dated April 27, 1934 and April 1, 1964, and, approved May 5, 1934 and April 1, 1964, for Group No. 49, Alaska.

The hydrography as shown was obtained from U. S. Geological Survey Maps.

UNITED STATES DEPARTMENT OF THE INTERIOR
BUREAU OF LAND MANAGEMENT
Washington, D. C. March 2, 1967

This plat is strictly conformable to the approved field notes, and the survey, having been correctly executed in accordance with the requirements of law and the regulations of this Bureau, is hereby accepted.

For the Director

E. G. Guenin
Chief, Division of Engineering

LAT. 64°46'36"N.
LONG. 147°14'20"W.

AREA SURVEYED: 1,919.32 ACRES

