

TOWNSHIP 1 SOUTH, RANGE 2 EAST, OF THE FAIRBANKS MERIDIAN, ALASKA

FNS 8 B

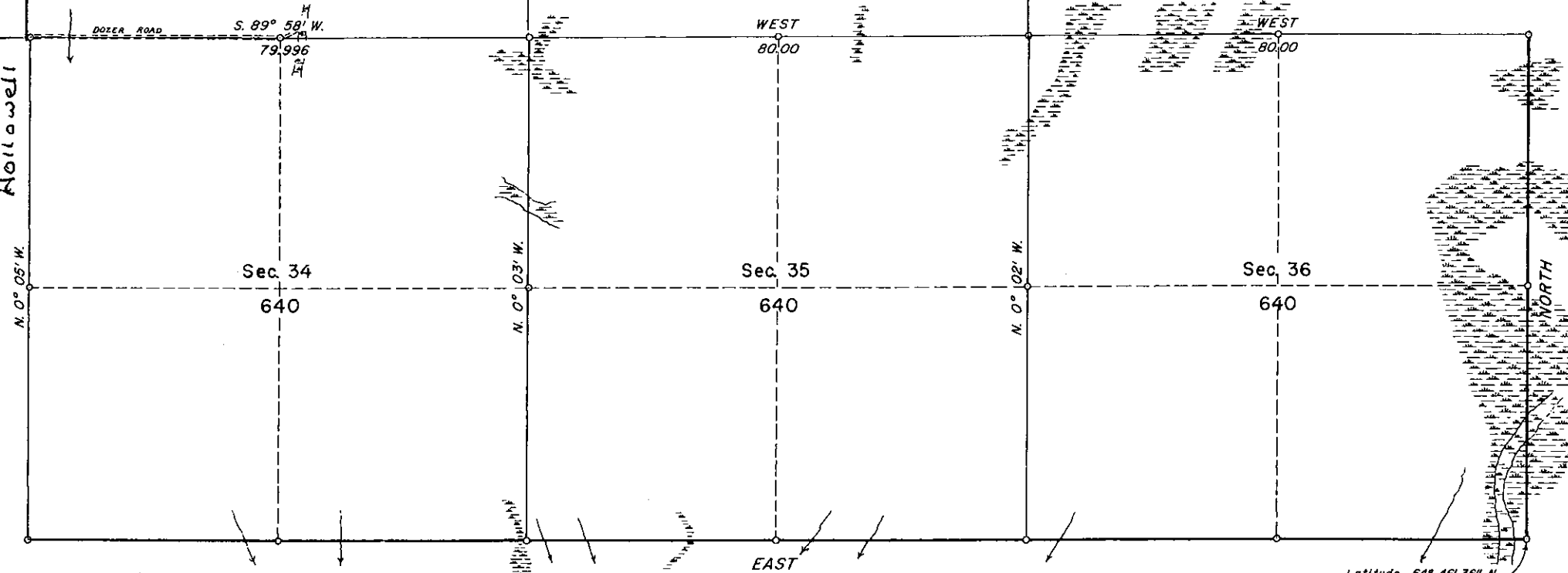
CIRI
SEL
27

CIRI
SEL
26

SEC
25

Repp

Mollowell



Area surveyed: 1920 acres

See plats accepted October 8, 1921 and March 1, 1951 for record of previous surveys in Township 1 South, Range 2 East, of the Fairbanks Meridian.

Survey of portions of south and east boundaries and portion of subdivisional lines executed by Gordon W. Webber May 17 to June 1, 1954, under special instructions for Group 49, Alaska, dated April 27, 1934.

Latitude 64° 46' 36" N.
Longitude 147° 14' 20" W.

UNITED STATES DEPARTMENT OF THE INTERIOR
BUREAU OF LAND MANAGEMENT
Washington, D. C. February 2, 1955

This plat is strictly conformable to the approved field notes, and the survey, having been correctly executed in accordance with the requirements of law and the regulations of this Bureau, is hereby accepted.

For the Director

Carl G. Harrington
Cadastral Engineering Staff Officer

o indicates an iron post

