

U. S. SURVEY
No. 3208, ALASKA
T. 5 S., R. 5 E., F.M.
T. 6 S., R. 5 E., F.M.
SALCHAKET (HARDING) LAKE
SMALL TRACT GROUP
embracing
Lots 1 to 24, inclusive.

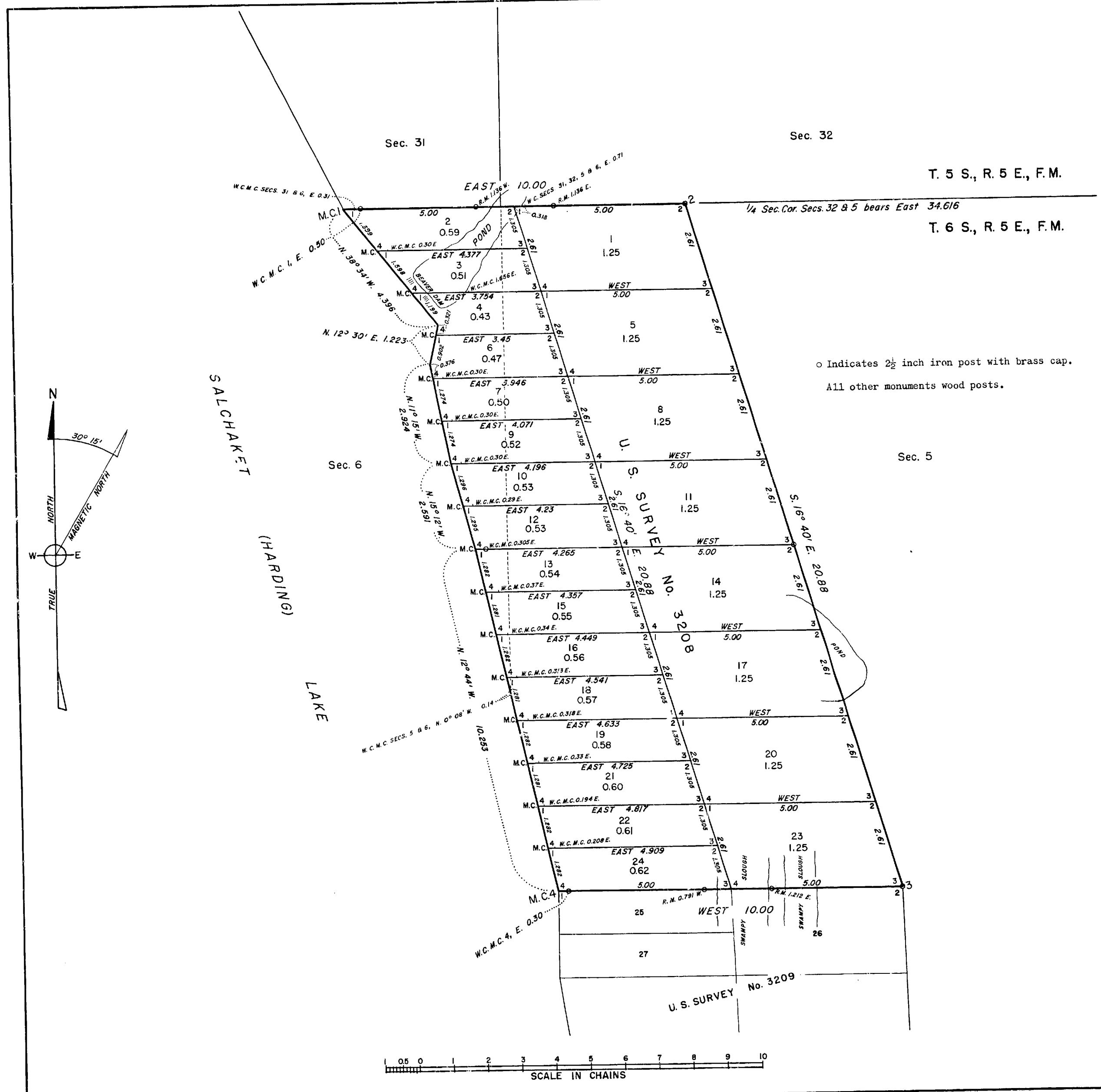
Situated
on the easterly shore of Salchaket
(Harding) Lake in secs. 5 and 6, T. 6 S.,
R. 5 East of the Fairbanks Meridian, Alaska
Area: 18.71 Acres

Surveyed By
Rudolph S. Egge, Cartographer (Cadastral)
August 1 to 6, 1952
Under Special Instructions Dated
July 11, 1952 and Approved
July 23, 1952

UNITED STATES DEPARTMENT OF THE INTERIOR
BUREAU OF LAND MANAGEMENT
Washington, D. C., December 23, 1953

This plat is strictly conformable to the approved
field notes, and the survey, having been correctly
executed in accordance with the requirements of law
and the regulations of this Bureau, is hereby accepted.

For the Director
Ronald Clement
Acting Chief, Division of
Cadastral Engineering



o Indicates 2 1/2 inch iron post with brass cap.
All other monuments wood posts.

