

3/4" PIPE
E 1/16 S-4 0 314.0'

3/4" PIPE
WEST 100 8.2' & HIGHWAY

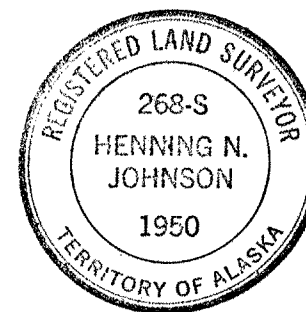
S. J. CHAPMAN-1959-ADDITION ANCHOR RIVER SUBDIVISION

LOCATED IN NE 1/4 NE 1/4 SEC. 4, T5S-R15W
SEWARD MERIDIAN, ALASKA

MARCH 2, 1959

SCALE=1"=100'

LOT CORNS. ARE SCRIBED 2"x3" STAKES



TRUE BEARINGS

No. 4948

FILED FOR RECORDING

5 Nov, 1959 at 3:40 P.M.

Vol. 18 Page 137

Homer Recording Precinct

Terr. of Alaska

At the Request of Christina M. Jones

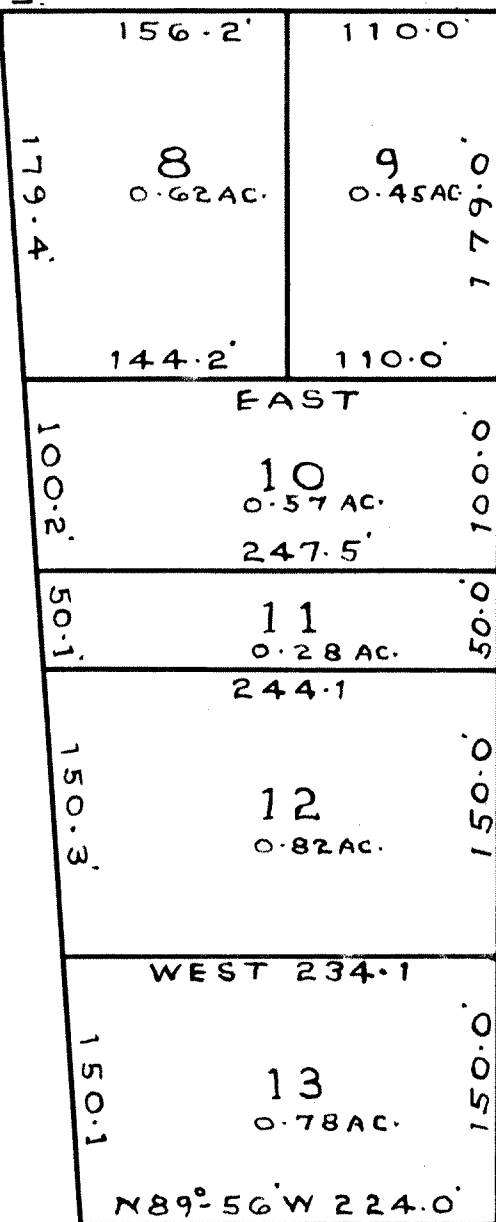
STERLING HIGHWAY TO HOMER
S. 03° 50' 30" E

S. J. CHAPMAN-1959-ADDITION

1954

S. J. CHAPMAN-1959-ADDITION

SURVEYED OCT 10, 1954



ORIG. ANCHOR RIVER SUBD.
BY RABICH

NORTH FORK ANCHOR RIVER