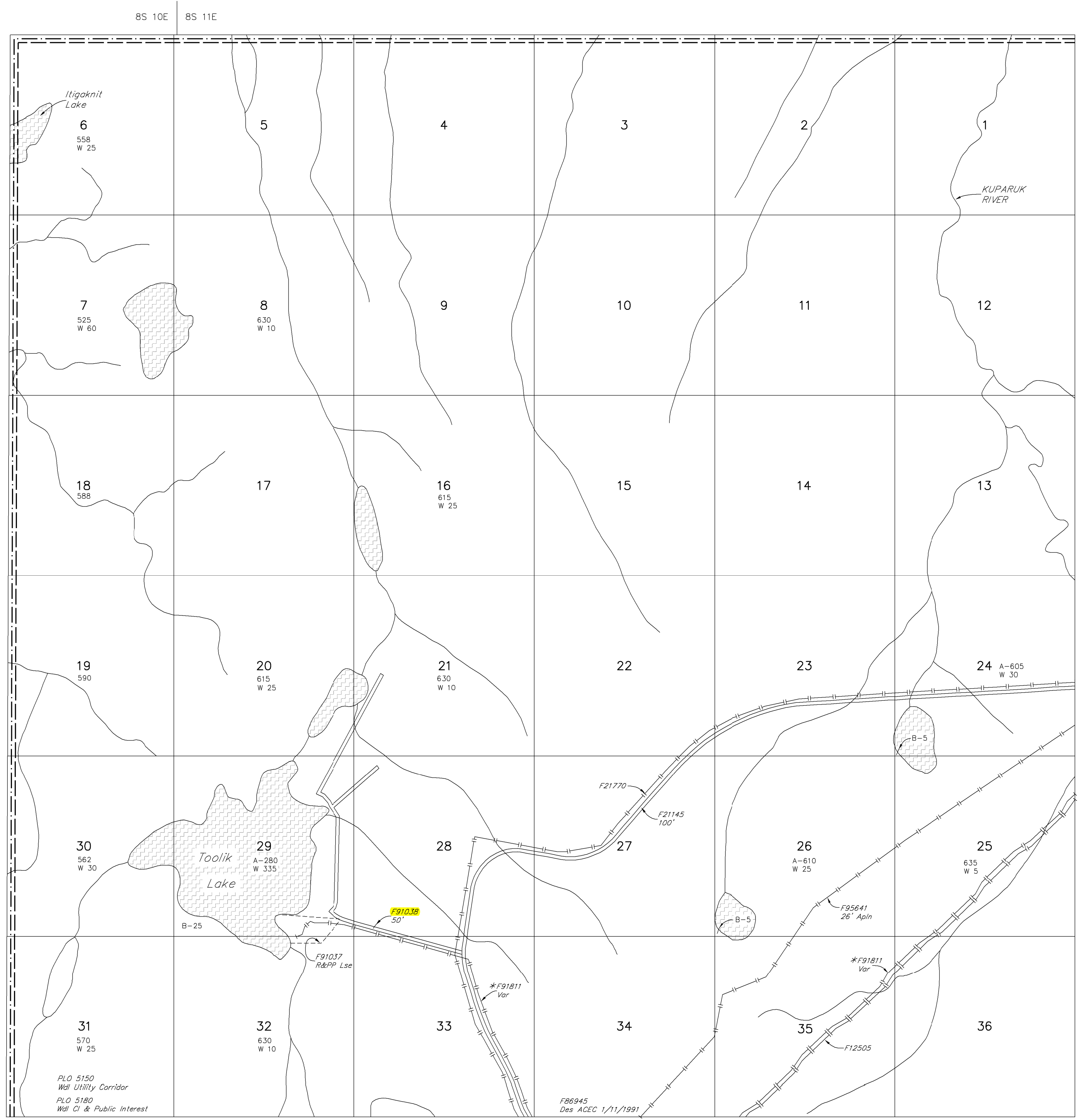


UNSURVEYED TOWNSHIP 9 SOUTH RANGE 11 EAST OF THE UMIAT MERIDIAN, ALASKA

PROTRACTION DIAGRAM NO. U11-10 OFFICIALLY FILED 5/17/1962



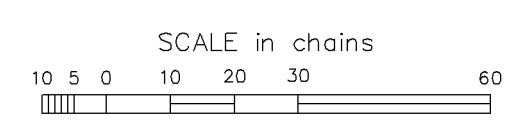
STATUS OF PUBLIC DOMAIN LAND AND MINERAL TITLES

MTP

FOR ORDERS EFFECTING DISPOSAL OR USE OF UN-IDENTIFIED LANDS WITHDRAWN FOR CLASSIFICATION MINERALS, WATER AND/OR OTHER PUBLIC PURPOSES REFER TO INDEX OF MISCELLANEOUS DOCUMENTS.

- PL0 3521 Restricts OG Leasing affects Lds/interests not conveyed
- FB5318 FLPMA Per M&B Sec 29
- FB9240 SS Amdt PL 96-487 Sec 906(e) Top Filed
- FB5682 FLPMA Per affects this Tp
- *F91811 see as-built for true R/W alignment
- F91153 FLPMA Per M&B affects an area W/ Sec 32: SE1/4NW1/4NE1/4, SW1/4SW1/4NE1/4
- F93505 FLPMA Per affects 0.06 acres W/ Sec 32: NW1/4
- F93790 R/W affects 16.88 acres W/ Sec 4
- FF094972 R/W for oil spill containment site affects:
 Sec 13: 1 acre W/ NW1/4NE1/4
 Sec 29: 1 acre W/ NE1/4NE1/4
 Sec 32: 1 acre W/ NW1/4NE1/4
 Sec 35: 1 acre W/ SE1/4NE1/4
- F95285 R/W affects 0.01 acres W/ Sec 32

PL0 5150
Well Utility Corridor
PL0 5180
Well CI & Public Interest



WARNING:
This plot is the Bureau's Record of Title, and should be used only as a graphic display of the township survey data. Records hereon do not reflect title changes which may have been effected by lateral movements of rivers or other bodies of water. Refer to the cadastral surveys for official survey information.

Lot 68°36'45.09"N
Long 149°25'20.234"W

CURRENT TO	
2-10-2010	

U Mer
T 9 S
R 11 E

ACAD