

**U.S. SURVEY
No. 13799, ALASKA
AND THE DEPENDENT RESURVEY
OF A PORTION OF
MINERAL SURVEY No. 2178, ALASKA**

SITUATED
ON MYERS FORK OF CHICKEN CREEK
APPROXIMATELY ONE MILE NORTHERLY
OF CHICKEN ALASKA
WITHIN TOWNSHIP 27 NORTH, RANGE 16 EAST,
COPPER RIVER MERIDIAN, ALASKA

GEOGRAPHIC POSITION

OF
CORNER No. 1,

IS:

LATITUDE: 64° 05' 08.34" NORTH NAD27
LONGITUDE: 141° 55' 44.07" WEST

AREA: 159.91 ACRES

THE DIRECTION OF ALL LINES SHOWN ON THE PLAT,
INCLUDING TIES, ARE REPORTED AS MEAN BEARINGS
WITH REFERENCE TO THE TRUE MERIDIAN.

SURVEYED BY ERIC STABLAKE,
REGISTERED ALASKA LAND SURVEYOR No. LS-6945
FOR TANANA CHIEFS CONFERENCE
AUGUST 11 THROUGH AUGUST 12, 2007

UNDER SPECIAL INSTRUCTIONS
DATED DECEMBER 19, 2006

APPROVED JULY 2, 2007

AND CONTRACT No. NAA070001

AWARDED MAY 31, 2007

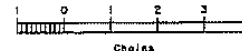
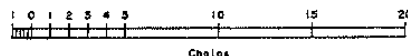
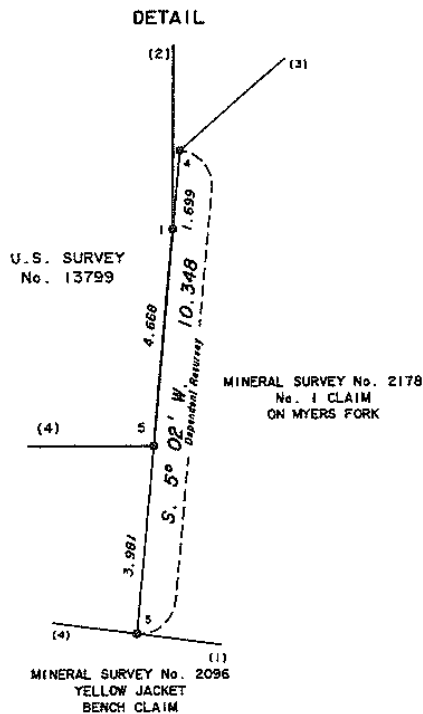
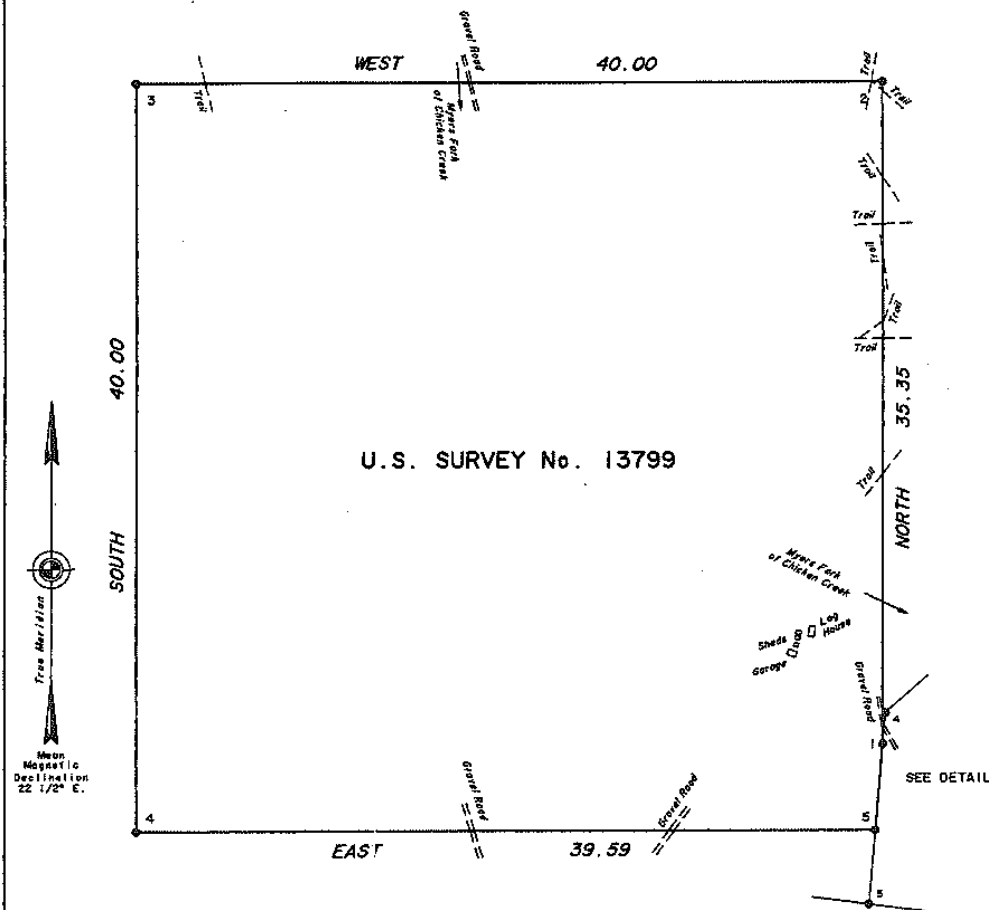
UNITED STATES DEPARTMENT OF THE INTERIOR
BUREAU OF LAND MANAGEMENT
Anchorage, Alaska

This plat is strictly conformable to the
approved field notes, and the survey, having
been correctly executed in accordance with the
requirements of law and the regulations of this
Bureau, is hereby accepted.

For the Director

John Frank April 4, 2008
Date

Deputy State Director for Cadastral Survey,
Alaska



RWR

