

U. S. SURVEY
No. 3208, ALASKA
T. 5 S., R. 5 E., F.M.
T. 6 S., R. 5 E., F.M.
SALCHAKET (HARDING) LAKE
SMALL TRACT GROUP
embracing
Lots 1 to 24, inclusive.

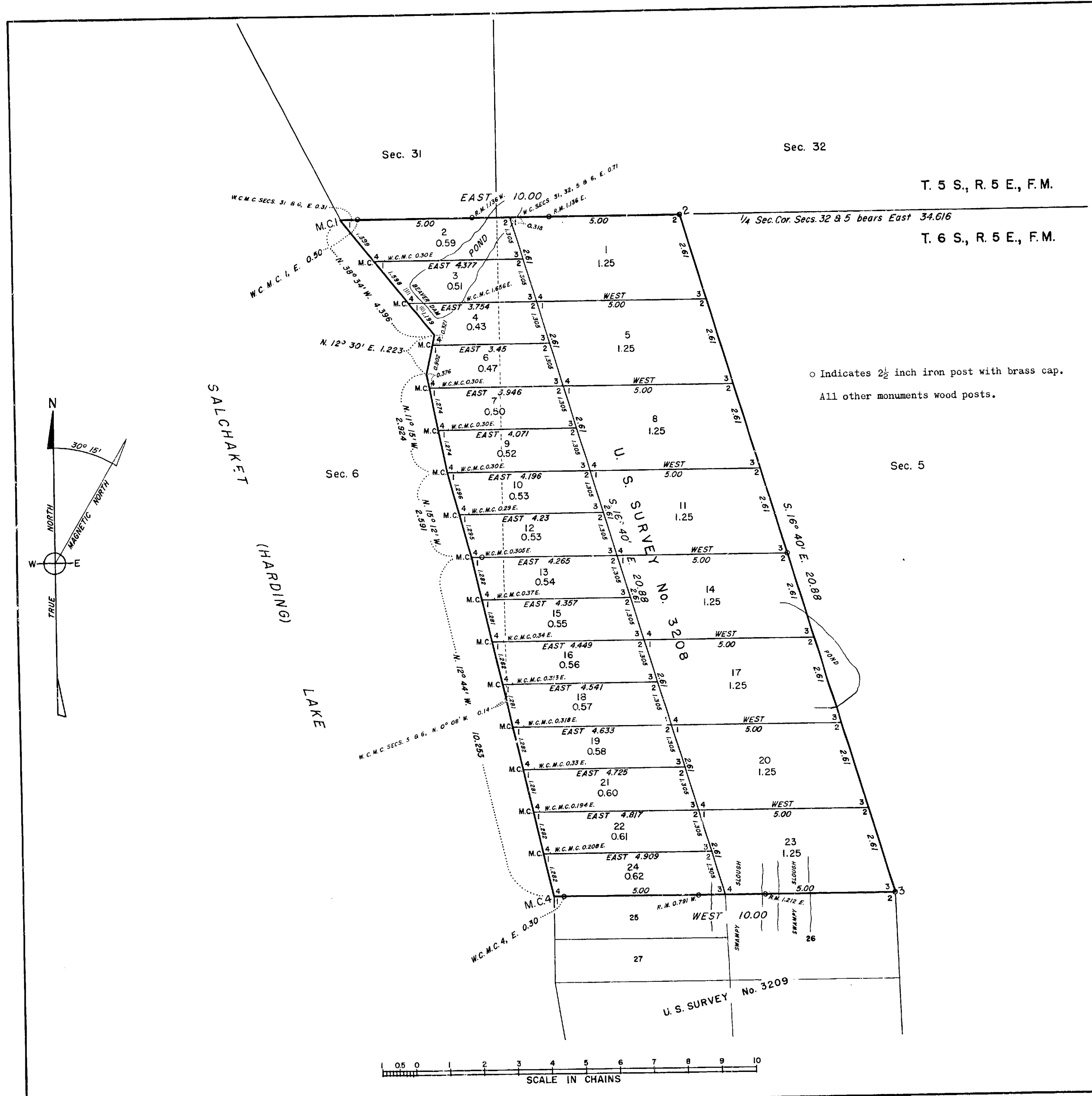
Situated
on the easterly shore of Salchaket
(Harding) Lake in secs. 5 and 6, T. 6 S.,
R. 5 East of the Fairbanks Meridian, Alaska
Area: 18.71 Acres

Surveyed By
Rudolph S. Egge, Cartographer (Cadastral)
August 1 to 6, 1952
Under Special Instructions Dated
July 11, 1952 and Approved
July 23, 1952

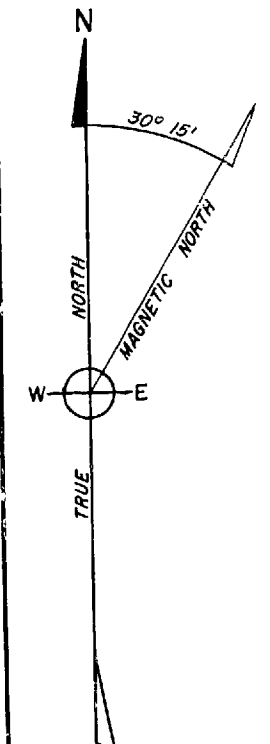
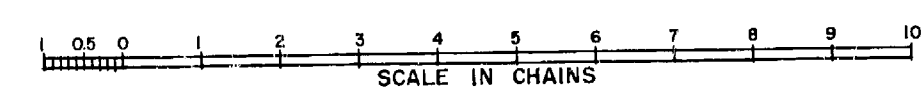
UNITED STATES DEPARTMENT OF THE INTERIOR
BUREAU OF LAND MANAGEMENT
Washington, D. C., December 23, 1953

This plat is strictly conformable to the approved
field notes, and the survey, having been correctly
executed in accordance with the requirements of law
and the regulations of this Bureau, is hereby accepted.

For the Director
Ronald O. Clement
Acting Chief, Division of
Cadastral Engineering



o Indicates 2 1/2 inch iron post with brass cap.
All other monuments wood posts.



ORIGINAL

75

UNITED STATES
DEPARTMENT OF THE INTERIOR
BUREAU OF LAND MANAGEMENT

FIELD NOTES

OF

U. S. SURVEY NO. 3203

SALCHAKET (HARDING) LAKE SMALL TRACT GROUP

EMBRACING LOTS 1 TO 24, INCLUSIVE

SITUATED

ON THE EASTERLY SHORE OF SALCHAKET (HARDING) LAKE IN

SECTIONS 5 AND 6, T. 6 S., R. 5 E.

Of the FALLBANKS Meridian,

In the ~~State of~~ TERRITORY OF ALASKA

EXECUTED BY

RUDOLPH S. EGGE, CARTOGRAPHER (CADASTRAL)

Under special instructions dated July 11, 1952, which provided
for the surveys included under ~~Group~~ U. S. Survey No. 3203, approved July 23, 1952
and assignment instructions dated July 15, 1952.

Survey commenced August 1, 1952

Survey completed August 6, 1952

- 1 -

U. S. SURVEY NO. 3208

Chains

Survey commenced August 1, 1952 and executed with a W. and L. E. Gurley transit No. 38105. The horizontal plates read by double opposite verniers to single minutes of arc, which is also the least count of the vernier of the vertical circle. After satisfactory tests, the instrument was found free from appreciable error. Prior to beginning the survey, I examine all the adjustments of the transit and find them correct.

All measurements were made with a 5-chain steel tape graduated first chain to single links, remainder at 10 link intervals. The tape was tested on a base laid out with a 66-foot standard steel tape and found correct. All measurements were made on the slope and the vertical angle for each interval determined with the transit circle, the horizontal equivalents are entered in the field note record.

On August 4, 1952, near the witness meander corner of Sec. 31, and Sec. 6, T. 5 S., T. 6 S. and R. 5 E. of the Fairbanks Meridian, in latitude $64^{\circ}25'48''$ N., and longitude $146^{\circ}48'32''$ W., as taken from the township plat. I take a series of altitude observations upon the sun for azimuth, each with the theodolite in direct and reverse positions, observing opposite limbs of the sun, and deflecting the horizontal angles left from mark to sun.

Observation	Inst.	Vertical Angle	Horizontal Angle	Time	150° Mer.
1	D	31° 39' 00"	29° 46' 00"	3:13 p.m.	
8	R	31° 37' 00"	29° 47' 00"	3:19 p.m.	
	Mean	31° 38' 00"	29° 16' 30"	3:16 p.m.	
2	D	31° 37' 00"	29° 36' 00"		
7	R	31° 40' 00"	29° 58' 30"		
	Mean	31° 38' 30"	29° 17' 15"		
3	D	31° 32' 00"	29° 26' 30"		
6	R	31° 44' 00"	29° 07' 00"		
	Mean	31° 38' 00"	29° 16' 45"		
4	D	31° 29' 00"	29° 12' 30"		
5	R	31° 47' 00"	29° 16' 30"		
	Mean	31° 38' 00"	29° 14' 30"		

Course to mark 1st observation	N. 89° 59' 37" W.
Course to mark 2nd observation	N. 89° 58' 52" W.
Course to mark 3rd observation	N. 89° 59' 22" W.
Course to mark 4th observation	N. 89° 58' 23" W.
Mean of 4 observations	N. 89° 59' 03" W.

The magnetic declination is 30° 15' E.

PRELIMINARY STATEMENT

Prior to the execution of this survey, it was necessary to retrace the line bet. the witness meander cor. of secs. 31 and 6, Tps. 5 and 6 S., R. 5 E., Fairbanks Meridian and through the sec. cor. of secs. 31, 32, 5 and 6 on the boundary of these townships, to the 1/4 sec. cor. of secs. 32 and 5.

The description of the corners and topography of lot boundaries given in the field notes of the exterior boundaries of the survey, where such boundary is identical to the identical lot boundary.

EXTERIOR BOUNDARIES OF U. S. SURVEY NO. 3208

Begin at the true point for meander cor. No. 1, identical with the point for the meander cor. of secs. 31 and 6, Tps. 5 and 6 S., R. 5 E., Fairbanks Meridian on the easterly shore of Salchaket Lake.

U. S. SURVEY NO. 3208

Chain

Impracticable to monument due to liability to destruction of monument by ice action.

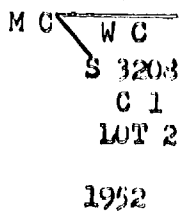
EAST

On line 1-2, identical with lines 1--2, Lots 1 and 2, Over level land through spruce and birch timber.

0.31 The witness moander cor. of secs. 31 and 6, which is monumented with and iron post, 1 in. diam., firmly set, mkd. and witnessed as described in the official record.

0.50 Point selected for witness moander cor. No. 1.

Set an iron post, 28 ins. long, 2½ ins. diam., 26 ins. in the ground, with brass cap mkd.



from which

A spruce, 5 ins. diam., bears S. 70°00' E., 0.48 chs. dist., mkd. X BT

A birch, 5 ins. diam., bears S. 11°15' E., 0.165 chs. dist., mkd. X BT.

3.86½ Point for reference monument, hereinafter described.

4.38 Westerly shore of a pond formed by backwater of a beaver dam, bears NE. and SW.

4.60 Point for the cor. of secs. 5, 6, 31 and 32, Tps 5 and 6 S., R. 5 E., F.M. Not monumented.

5.00 Point for cor. No. 2, Lot 2, identical with cor. No. 1, Lot 1, falls in pond. No monument set.

from which

An iron post, 2½ ins. diam., 28 ins. long, set 25 ins. in the ground, for a reference monument, bears EAST 75 ft. dist., with the brass cap mkd. RM 75.0' S 3208 1952, and an arrow pointing to the true point.

An iron post, 2½ ins. diam., 28 ins. long, set 25 ins. in the ground, for a reference monument, bears WEST 75 ft. dist., with the brass cap mkd. RM 75.0' S 3208 1952, and an arrow pointing to the true point.

5.318 The witness cor. to the cor. of secs. 31, 32, 5 and 6, Tps 5 and 6 S., R. 5 E., F.M., which is monumented with an iron post, 2 ins. diam., firmly set, mkd. and witnessed as described in the official record, with exception of the SW. bearing tree which is fallen.

from which a new bearing tree

A spruce, 5 ins. diam., bears S. 68°45' E., 0.53 chs. dist., mkd. WC T6S R5E 35 BT.

This monument sits on the easterly shore of a pond, which bears NE. and SW.

U. S. SURVEY NO. 3208

Chain
6.136

Reference monument, hereinbefore described.

10.00

Point for cor. No. 2, identical with cor. No. 2, Lot 1.

Set an iron post, 28 ins. long, 2½ ins. diam., 25 ins. in the ground, with brass cap mkd.

S 3208
C 2
LOT 1

1952

from which

A spruce, 4 ins. diam., bears S. 22°30' W., 0.355 chs. dist., mkd. X BT.

A birch, 4 ins. diam., bears S. 47°45' W., 0.675 chs. dist., mkd. X BT.

The 1/4 sec. cor. of secs. 32 and 5, Tps. 5 and 6 S., R. 5 E., F.M. which is monumented with an iron post, 1 in. diam., firmly set, mkd. and witnessed as described in the official record, bears EAST 34.616 chs. dist.

S. 16° 40' E.

On line 2-3, identical with lines 2-3, Lots 1, 5, 8, 11, 14, 17, 20 and 23.

Over level land, through stunted spruce and blueberry undergrowth.

2.61

Point for cor. No. 3, Lot 1, identical with cor. No. 2, Lot 5.

Set a wood post, 2x3 ins., 3 ft. long, 18 ins. in the ground, painted white and scribed C3 LOT 1 on NW., C2 LOT 5 on S. and S 3208 on W. side.

5.22

Point for cor. No. 3, Lot 5, identical with cor. No. 2, Lot 8.

Set a wood post, 2x3 ins., 3 ft. long, 18 ins. in the ground, painted white and scribed C3 LOT 5 on NW., C2 LOT 8 on S. and S 3208 on W. side.

7.83

Point for cor. No. 3, Lot 8, identical with cor. No. 2, Lot 11.

Set a wood post, 2x3 ins., 3 ft. long, 18 ins. in the ground, painted white and scribed C3 LOT 8 on NW., C2 LOT 11 on S. and S3208 on W. side.

10.44

Point for cor. No. 3, Lot 11, identical with cor. No. 2, Lot 14.

Set an iron post, 28 ins. long, 2½ ins. diam., 25 ins. in the ground, with brass cap mkd.

S 3208
LOT 11
C 3

LOT 14
C 2

1952

from which

A spruce, 4 ins. diam., bears S. 6°00' W., 0.53 chs. dist., mkd. X BT.

U. S. SURVEY NO. 3208

- Chains A spruce, 4 ins. diam., bears N. $77^{\circ}30'$ W., 0.57 chs. dist., mkd. X BT.
- 12.35 Northerly edge of a muskog covered pond, bears SE. and NW.
- 13.05 Point for cor. No. 3, Lot 14, identical with cor. No. 2, Lot 17.
Set a wood post, 2x3 ins., 3 ft. long, 18 ins. in the ground, painted white, and scribed C3 LOT 14 on NW., C2 LOT 17 on S., and S 3208 on W. side.
- 15.20 Southerly edge of pond, bears NE. and W.
- 15.66 Point for cor. No. 3, Lot 17, identical with cor. No. 2, Lot 20.
Set a wood post, 2x3 ins., 3 ft. long, 18 ins. in the ground, painted white and scribed C3 LOT 17 on NW., C2 LOT 20 on S. and S 3208 on W. side.
- 18.27 Point for cor. No. 3, Lot 20, identical with cor. No. 2, Lot 23.
Set a wood post, 2x3 ins., 3 ft. long, 18 ins. in the ground, painted white and scribed C3 LOT 20 on NW., C2 LOT 23 on S. and S 3208 on W. side.
- 20.83 Point for cor. No. 3, identical with cor. No. 3, Lot 23.
Set an iron post, 28 ins. long, 2 $\frac{1}{2}$ ins. diam., 25 ins. in the ground, with brass cap mkd.

S 3208
C 3
LOT 23

1952

from which

A spruce, 4 ins. diam., bears S. $38^{\circ}45'$ W., 0.335 chs. dist., mkd. X BT.

A spruce, 4 ins. diam., bears S. $88^{\circ}00'$ W., 0.50 chs. dist., mkd. X BT.

WEST

On line 3-4, identical with lines 3-4, Lots 23 and 24.

Over level swampy land, through stunted spruce.

- 2.45 East edge of a swampy slough, bears N. and S.
- 3.40 West edge of same slough, bears N. and S.
- 3.788 Point for reference monument, hereinafter described.
- 3.90 East edge of a swampy slough, bears N. and S.
- 5.00 Cor. No. 4, Lot 23, identical with cor. No. 3, Lot 24.
Set a wood post, 2x3 ins., 3 ft. long, 18 ins. in the ground, painted white and scribed C4 LOT 23 on NE., C3 LOT 24 and S 3208 on NW. side.
from which
An iron post, 28 ins. long, 2 $\frac{1}{2}$ ins. diam., set 25 ins. in the ground for a reference monument, bears EAST 30 ft. dist., with the brass cap mkd. S 3208 RM 30.0' 1952, and an arrow pointing to the true corner.

U. S. SURVEY NO. 3208

CONTINUED

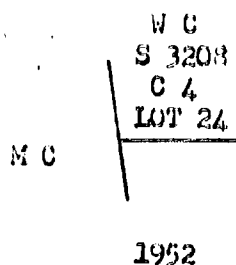
An iron post, 28 ins. long, 2½ ins. diam., set 25 ins. in the ground for a reference monument, bears WEST 52.2 ft. dist. with brass cap mkd. S 3208 RM 52.3' 1952, and an arrow pointing to the true corner.

5.40 West edge of above slough, bears N. and S.

5.791 Reference monument, heretofore described.

9.70 Point selected for witness meander cor. No. 4, identical with witness meander cor. No. 4, Lot 24.

Set an iron post, 28 ins. long, 2½ ins. diam., 26 ins. in the ground, with brass cap mkd.



from which

A spruce, 4 ins. diam., bears N. 7° 00' E., 0.29 chs. dist., mkd. X BT.

A spruce, 4 ins. diam., bears S. 35° 10' E., 0.385 chs. dist., mkd. X BT.

10.00 True point for the meander cor. No. 4, identical with cor. No. 4, Lot 24, impracticable to monument due to liability to destruction by ice action.

Thence with meanders along the easterly shore of Salchaket Lake, at a line of mean high water.

N. 12° 44' W., 10.253 chs. At 1.282 chs., point for meander cor. No. 1, Lot 24, identical with meander cor. No. 4, Lot 22, impracticable to monument due to liability to destruction of monument by ice action.

At a point EAST, 0.203 chs. dist., on line between Lots 22 and 24, on suitable ground for witness meander cor. No. 1, Lot 24, identical with witness meander cor. No. 4, Lot 22, set a wood post, painted white, 2x3 ins., 3 ft. long, 13 ins. in the ground, scribed C4 LOT 22 on N., WC on E., C1 LOT 24 on S. and MC on W. side.

At 2.564 chs., point for meander cor. No. 1, Lot 22, identical with meander cor. No. 4, Lot 21, impracticable to monument due to liability of destruction of monument by ice action.

At a point EAST, 0.194 chs. dist. on line between lots 21 and 22, on suitable ground for witness meander cor. No. 1, Lot 22, identical with witness meander Cor. No. 4, Lot 21. Set a wood post, painted white, 2x3 ins., 3 ft. long, 13 ins in the ground, scribed C4 LOT 21 on N., WC on E., C1 LOT 22 on S., MC on W. side.

U. S. SURVEY NO. 1203

Chains

At 3.175 chs. point for meander cor. No. 1, Lot 21, identical with meander cor. No. 4, Lot 19, impracticable to monument due to liability of destruction of monument by ice action.

At a point EAST 0.330 chs. dist., on line between lots 19 and 21, on suitable ground for witness meander cor. No. 1, Lot 21, identical with witness meander cor. No. 4, Lot 19, set a wood post, painted white, 2x3 ins., 3 ft. long, 13 ins. in the ground, scribed C4 LOT 19 on N., WC on E., C1 LOT 21 on S., MC on W. side.

At 5.127 chs., point for meander cor. No. 1, Lot 19, identical with meander cor. No. 4, Lot 13, impracticable to monument due to liability of destruction of monument by ice action.

At a point EAST 0.313 chs. dist., on line between lots 13 and 19, on suitable ground for witness meander cor. No. 1, lot 19, identical with witness meander cor. No. 4, Lot 13, set a wood post, painted white, 2x3 ins., 3 ft. long, 13 ins. in the ground, scribed C4 LOT 13 on N., WC on E., C1 LOT 19 on S., MC on W. side.

At 5.397 chs., intersect the true point for the meander cor. of secs. 5 and 6, T. 6 S., R. 5 E., P.M., from which

The witness meander cor. of secs. 5 and 6, which is monumented with an iron post, 1 in. diam., firmly set and mtd. as described in the official record, bears N.0° 03' W., 0.14 chs. dist. The bearing trees are dead and fallen.

from which now bearing trees

A tamarack, 4 ins. diam., bears S. 82°15' E., 0.46 chs. dist., mtd. X BT.

A spruce, 3 ins. diam., bears N. 2°45' W., 1.62 chs. dist., mtd. X BT.

At 6.403 chs., point for meander cor. No. 1, Lot 13, identical with meander cor. No. 4, Lot 16, impracticable to monument due to liability of destruction of monument by ice action.

At a point EAST 0.313 chs. dist., on line between lots 16 and 13, on suitable ground for witness meander cor. No. 1, Lot 13, identical with witness meander cor. No. 4, Lot 16, set a wood post, painted white, 2x3 ins., 3 ft. long, 13 ins. in the ground, scribed C4 LOT 16 on N., WC on E., C1 LOT 13 on S. and MC on W. side.

U. S. SURVEY NO. 3203

Chains

At 7.690 chs., point for meander cor. No. 1, Lot 16, identical with meander cor. No. 4, Lot 15, impracticable to monument due to liability of destruction of monument by ice action.

At a point EAST 0.34 chs. dist., on line between Lots 15 and 16, on suitable ground for witness meander cor. No. 1, Lot 16, identical with witness meander cor. No. 4, Lot 15, set a wood post, painted white, 2x3 ins., 3 ft. long, 18 ins. in the ground, scribed C4 LOT 15 on N., WC on E., C1 LOT 16 on S. and WC on W. side.

At 8.971 chs., point for meander cor. No. 1, Lot 15, identical with meander cor. No. 4, Lot 13, impracticable to monument due to liability of destruction of monument by ice action.

At a point EAST 0.37 chs. dist. on line bet. Lots 13 and 15 on suitable ground for witness meander cor. No. 1, Lot 15, identical with witness meander cor. No. 4, Lot 13, set a wood post, painted white, 2x3 ins., 3 ft. long, 18 ins. in the ground, scribed C4 LOT 13 on N., WC on E., C1 LOT 15 on S. and WC on W. side.

At 10.253 chs., end of course and point for meander cor. No. 1, Lot 13, identical with meander cor. No. 4, Lot 12, impracticable to monument due to liability of destruction of monument by ice action.

At a point EAST 0.305 chs. dist., on line between Lots 12 and 13, on suitable ground for witness meander cor. No. 1, Lot 13, identical with witness meander cor. No. 4, Lot 12, set an iron post, 28 ins. long, 2 1/2 ins. diam., 26 ins. in the ground with the brass cap mkd.

W C
S 3203
LOT 12
C 4

LOT 13
C 1

1952

from which

A tamarack, 3 ins. diam., bears S. 30° 40' E., 0.39 chs. dist., mkd. X BT.

A spruce, 3 ins. diam., bears S. 27° 30' E., 0.555 chs. dist., mkd. X BT.

N. 15° 12' W., 2.591 chs.

At 1.295 chs., point for meander cor. No. 1, Lot 12, identical with meander cor. No. 4, Lot 10, impracticable to monument due to liability of destruction of monument by ice action.

U. S. SURVEY NO. 3208

Chains

At a point EAST 0.29 chs. dist., on line between Lots 10 and 12, on suitable ground for witness meander cor. No. 1, Lot 12, identical with witness meander cor. No. 4, Lot 10, set a wood post, painted white, 2x3 ins., 3 ft. long, 18 ins. in the ground scribed C4 LOT 10 on N., WC on E., C1 LOT 12 on S., and MC on W. side.

At 2.591 chs., end of course and point for meander cor. No. 1, Lot 10, identical with meander cor. No. 4, Lot 9, impracticable to monument due to liability of destruction of monument by ice action.

At a point EAST 0.30 chs. dist., on line between lots 9 and 10, on suitable ground for witness meander cor. No. 1, Lot 10, identical with witness meander cor. No. 4, Lot 9, set a wood post, painted white, 2x3 ins., 3 ft. long, 18 ins. in the ground, scribed C4 LOT 9 on N., WC on E., C1 LOT 10 on S. and MC on W. side.

N. 11° 15' W., 2.924 chs. At 1.274 chs., point for meander cor. No. 1, Lot 9, identical with meander cor. No. 4, Lot 7, impracticable to monument due to liability of destruction of monument by ice action.

At a point EAST, 0.30 chs. dist., on line between Lots 7 and 9, on suitable ground for witness meander cor. No. 1, Lot 9, identical with witness meander cor. No. 4, Lot 7, set a wood post, painted white, 2x3 ins., 3 ft. long, 18 ins. in the ground, scribed C4 LOT 7 on N., WC on E., C1 LOT 9 on S. and MC on W. side.

At 2.54° chs. point for meander cor. No. 1, LOT 7, identical with meander cor. No. 4, LOT 6, impracticable to monument due to liability of destruction of monument by ice action.

At a point EAST 0.30 chs., dist. on line between Lots 6 and 7, on suitable ground for witness meander cor. No. 1, Lot 7, identical with witness meander cor. No. 4, Lot 6, set a wood post, painted white, 2x3 ins., 3 ft. long, 18 ins. in the ground, scribed C4 LOT 6 on N., WC on E., C1 LOT 7 on S. and MC on W. side.

At 2.924 chs., end of course.

N. 12° 30' E., 1.223 chs. At 0.902 chs., point for meander cor. No. 1, Lot 6, identical with meander cor. No. 4, Lot 4, set a wood post, painted white, 2x3 ins., 3 ft. long, 18 ins. in the ground, scribed C4 LOT 4 on N., C1 LOT 6 on S., and MC on E. side.

At 1.223 chs., end of course.

U. S. SURVEY NO. 3208

CHAIN

N. 39° 34' W., 4.396 chs., At 1.199 chs., point for meander cor. No. 1, Lot 4, identical with meander cor. No. 4, Lot 3, falls at the mouth of a creek, impracticable to monument, from which the northerly end of a beaver dam bears N. 11° W., 0.95 chs. dist., and the southerly end bears S. 50° E., 0.95 chs. dist.

At a point EAST 1.656 chs. dist., on line between lots 3 and 4, on suitable ground for witness meander cor. No. 1, Lot 4, identical with witness meander cor. No. 4, Lot 3, set a wood post, painted white, 2x3 ins., 3 ft. long, 18 ins. in the ground, scribed C4 LOT 3 on N., WC on E., C1 LOT 4 on S. and MC on W. side.

At 2.797 chs., point for meander cor. No. 1, Lot 3, identical with meander cor. No. 4, Lot 2, impracticable to monument due to liability of destruction of monument by ice action.

At a point EAST 0.30 chs. dist., on line between Lots 2 and 3, on suitable ground for witness meander cor. No. 1, Lot 3, identical with witness meander cor. No. 4, Lot 2, set a wood post, painted white, 2x3 ins., 3 ft. long, 18 ins. in the ground, scribed C4 LOT 2 on N., WC on E., C1 LOT 3 on S., and MC on W. side.

At 4.396 chs., end of course and true point for meander cor. No. 1, identical with meander cor. No. 1, Lot 2, and point of beginning, containing 18.71 acres.

REPORT OF SURVEY

The lot lines, bearings and distances are delineated on the plat of the survey and are therefore not given within this field note record. All lot corners and witness corners to lot corners in the interior of the survey, are monumented with wood posts, painted white, 2x3 ins., 3 ft. long, set 18 ins. in the ground and appropriately marked.

Wood posts, 2x3 ins., 36 ins. long, painted white and scribed RM are set 18 ins. in the ground for reference monuments at points 0.791 chs. dist. West of cors. 2 and 3 on lines between Lots 2-3, 3-4, 4-6, 6-7, 7-9, 9-10, 10-12, 12-13, 13-15, 15-16, 16-18, 18-19, 19-21, 21-22 and 22--24.

GENERAL DESCRIPTION

The land embraced by this survey is level and containing several small muskeg-covered ponds. The cover is a thin stand of stunted spruce, with undergrowth of blueberry. The soil is a sandy loam and silt frozen to within 12 to 18 ins. of the surface and covered with a thick layer of moss.

The backwaters of a beaver pond cover a portion of Lots 2, 3 and 4.

CERTIFICATE OF CADASTRAL ENGINEER

I, Rudolph S. Eggo, HEREBY CERTIFY upon honor that, in pursuance of special instructions bearing date of the 11th day of July, 1952 I have surveyed U. S. Survey No. 3204, Salchaket (Harding) Lake Small Tract Group, embracing Lots 1 to 24 inclusive, situated on the Easterly Shore of Salchaket (Harding) Lake, in Sections 5 and 6, T. 6 S., R. 5 E. of the Fairbanks Meridian, in the Territory of Alaska, which are represented in the foregoing field notes as having been executed by me and under my direction; and that said survey has been made in strict conformity with said instructions, the Manual of Instructions for the Survey of the Public Lands of the United States, and in the specific manner described in the foregoing field notes.

Juneau, Alaska
Jan. 6, 1953

Rudolph S. Eggo
Cartographer (Cadastral)

CERTIFICATE OF APPROVAL

BUREAU OF LAND MANAGEMENT,

Washington, D. C., DEC. 23 1953, 19

The foregoing field notes of the survey of U. S. Survey No. 3204, Salchaket (Harding) Lake Small Tract Group, embracing Lots 1 to 24 inclusive, situated on the Easterly Shore of Salchaket (Harding) Lake in Sections 5 and 6, T. 6 S., R. 5 E., E.M., executed by Rudolph S. Eggo, Cartographer (Cadastral) having been critically examined and found correct, are hereby approved.

James B. Cement
Acting Chief, Division of Cadastral Engineering.

CERTIFICATE OF TRANSCRIPT

I CERTIFY that the foregoing transcript of the field notes of the above-described surveys in Alaska, is a true copy of the original field notes.

Chief, Division of Cadastral Engineering.