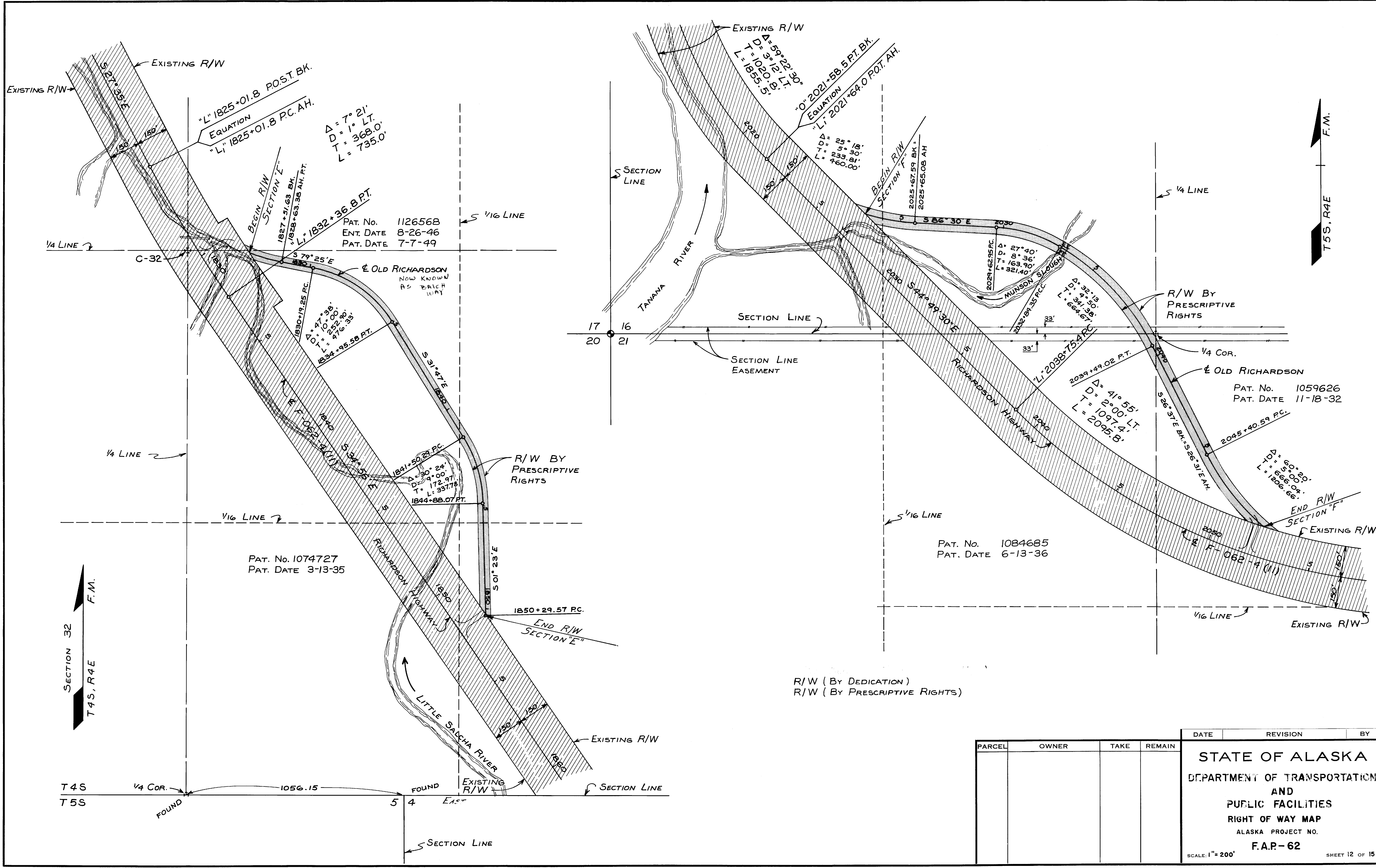


S' Sheet No. 12 Drawing No. 253 ik
 O Old Richardson Hwy
 P Fairbanks - Shaw Creek
 FAP-62



R/W (By Dedication)
 R/W (By Prescriptive Rights)

PARCEL	OWNER	TAKE	REMAIN

DATE	REVISION	BY

STATE OF ALASKA
 DEPARTMENT OF TRANSPORTATION
 AND
 PUBLIC FACILITIES
 RIGHT OF WAY MAP
 ALASKA PROJECT NO.
F.A.P.-62

SCALE: 1" = 200'
 SHEET 12 OF 15