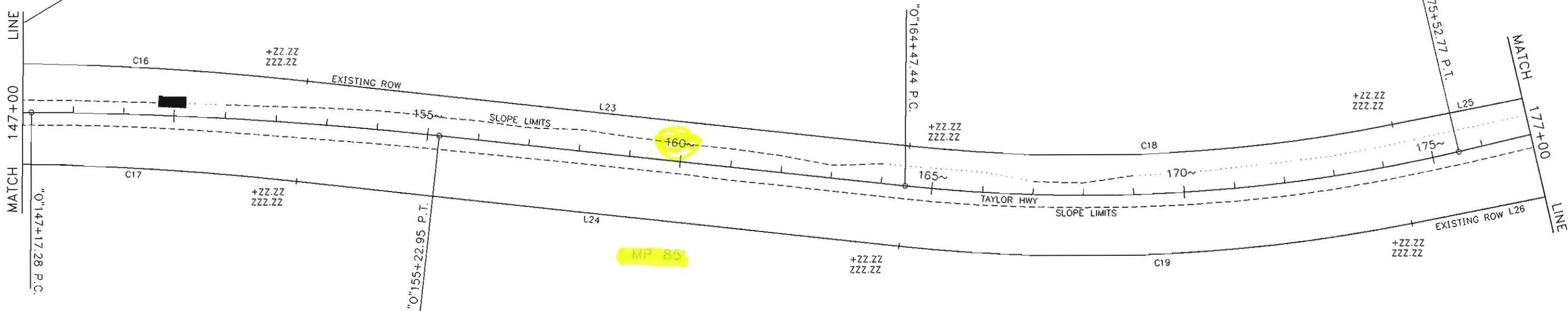
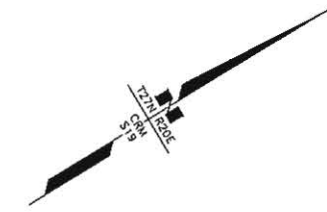


USA/BLM
WILD AND SCENIC RIVER CORRIDOR



USA/BLM
WILD AND SCENIC RIVER CORRIDOR

FILL

LINE TABLE

#	BEARING	DIST
L23	N 37°09'00" E	1195.00
L24	N 37°09'00" E	1195.00
L25	N 19°47'31" E	864.24
L26	N 19°47'31" E	1486.28

CURVE TABLE

#	DELTA	RAD	TAN	L	CHORD	C BRG
C16	06°27'02"	5829.58	328.50	656.31	655.96	S 33°55'29" W
C17	06°27'02"	5629.58	317.23	633.79	633.46	S 33°55'29" W
C18	17°21'29"	3174.04	484.51	961.60	957.92	N 28°28'15" E
C19	17°21'29"	3374.04	515.04	1022.19	1018.28	N 28°28'15" E

DATE	REVISION	BY

WASRC BNDY



PARCEL NUMBER	OWNER(S)	LARGER PARCEL	ACQUISITION INCL. EXISTING EASEMENTS	NET ACQUISITION	REMAINDER

STATE OF ALASKA
DEPARTMENT OF TRANSPORTATION
AND
PUBLIC FACILITIES
RIGHT OF WAY MAP
ALASKA PROJECT NO.
FRCP-FRAF-STP-0785(11)/66446
TAYLOR HIGHWAY MP-64 TO
CANADIAN BORDER
SCALE: 1" = 100'

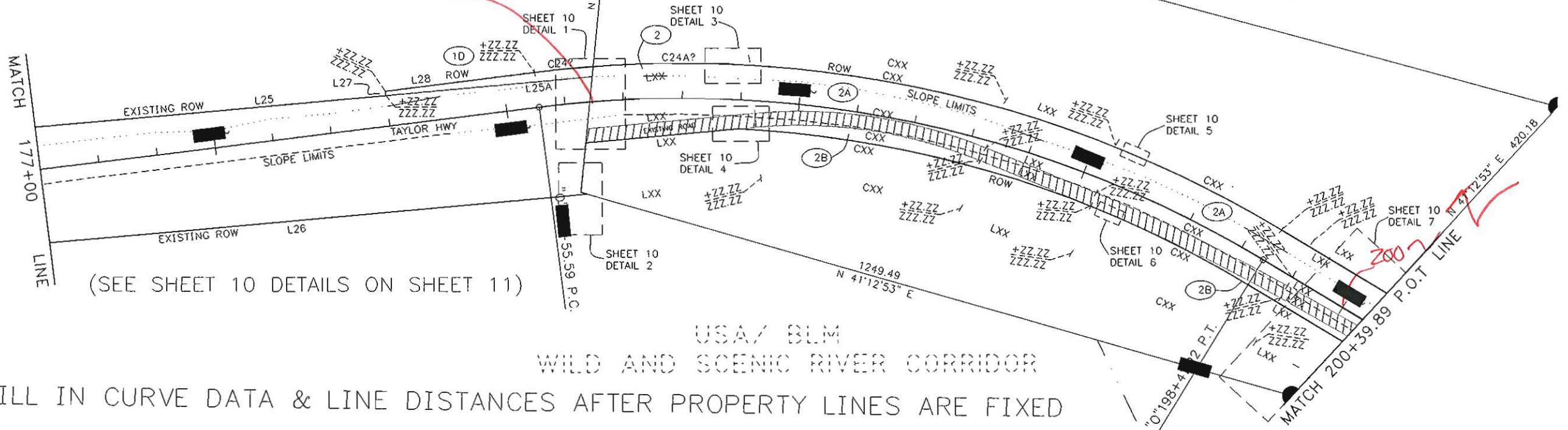
Location Date July 3, 1979 (BLM)

F-54305 & 54304
 Jeff Olson to Hart
 2004024510-0
 10/27/04

USA/BLM
 WILD AND SCENIC RIVER CORRIDOR

MP 85.5
 186+50

F-54304
 No. 5 ABOVE LOWER DISCOVERY
 CLAIMANT ELLEN JANE HART
 19.763 AC



USA/BLM
 WILD AND SCENIC RIVER CORRIDOR

FILL IN CURVE DATA & LINE DISTANCES AFTER PROPERTY LINES ARE FIXED

CURVE TABLE

#	DELTA	RAD	TAN	L	CHORD	C BRG
C20	27°45'45"	918.51	226.99	445.06	440.72	S 33°40'23" W
C21	27°45'45"	718.51	177.56	348.15	344.76	S 33°40'23" W
C22	07°14'59"	2964.79	187.82	375.14	374.89	S 51°10'46" W
C23	07°14'59"	2764.79	175.15	349.83	349.60	S 51°10'46" W
C24	02°27'13"	1969.86	42.18	84.36	84.35	N 19°02'01" E
C24A	36°08'11"	1969.86	642.64	1242.39	1221.90	N 38°19'43" E

LINE TABLE

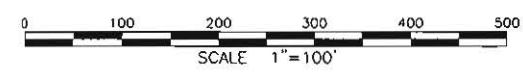
#	BEARING	DIST
L25	N 19°47'31" E	864.24
L25A	N 19°47'31" E	352.61
L26	N 19°47'31" E	1189.72
L27	N 72°11'35" W	7.53
L28	N 17°48'25" E	255.59
L29	S 59°16'00" E	17.61

No 5 Ab & FRA

Jeffery G. Olson to Ellen Jane Hart 10/27/04
 Estate George F. Robinson to Jeffery G. Olson 8/25/93

S18
 S19

"WALTER Hunt No. 5 Ab Disc"



PARCEL NUMBER	OWNER(S)	LARGER PARCEL	ACQUISITION INCL. EXISTING EASEMENTS	NET ACQUISITION	REMAINDER
3B	USA/BLM-ELLEN JANE HART	LARGE	?????.?? SF	?????.?? SF	LARGE
3A	USA/BLM-ELLEN JANE HART	LARGE	?????.?? SF	?????.?? SF	LARGE
2B	USA/BLM-ELLEN JANE HART	LARGE	?????.?? SF	?????.?? SF	LARGE
2A	USA/BLM-ELLEN JANE HART	LARGE	?????.?? SF	?????.?? SF	LARGE
10	USA/BLM	LARGE	?????.?? SF	?????.?? SF	LARGE

DATE	REVISION	BY

STATE OF ALASKA
 DEPARTMENT OF TRANSPORTATION
 AND
 PUBLIC FACILITIES
 RIGHT OF WAY MAP
 ALASKA PROJECT NO.
 FRCP-FRAF-STP-0785(11)/66446
 TAYLOR HIGHWAY MP-64 TO
 CANADIAN BORDER
 SCALE: 1" = 100'
 SHEET 10 OF 50

W&SRC BNDY

USA/ BLM
WILD AND SCENIC RIVER CORRIDOR

Loc Notice Jul 3, 79 (BLM)

Loc Notice Jul 3, 79 (BLM)

F-54305
FRACTION A
CLAIMANT ELLEN JANE HART
13.576 AC

Grantor: Ellen Jane Hart

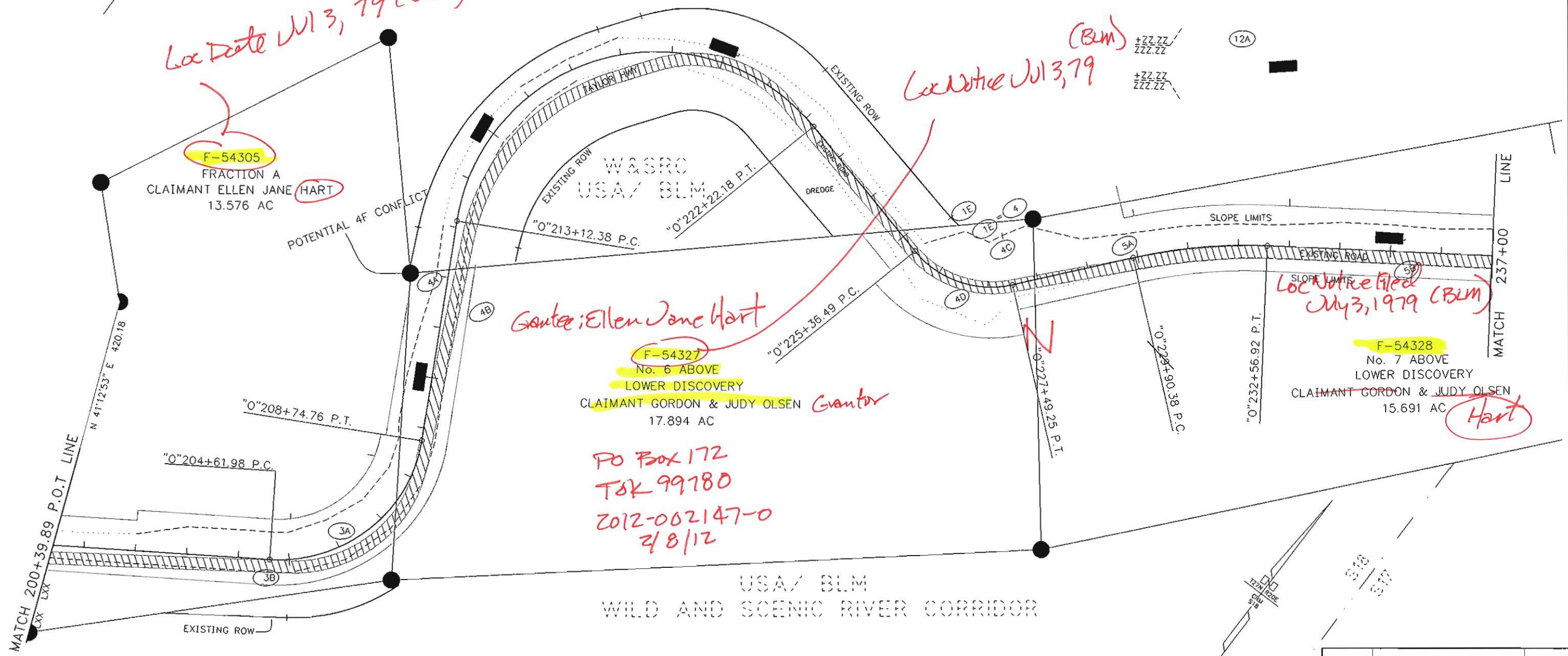
F-54327
No. 6 ABOVE
LOWER DISCOVERY
CLAIMANT GORDON & JUDY OLSEN
17.894 AC

Grantor

*PO Box 172
TSK 99180
2012-002147-0
2/8/12*

F-54328
No. 7 ABOVE
LOWER DISCOVERY
CLAIMANT GORDON & JUDY OLSEN
15.691 AC

Hart



FILL IN CURVE DATA & LINE DISTANCES AFTER PROPERTY LINES ARE FIXED

S18
S19



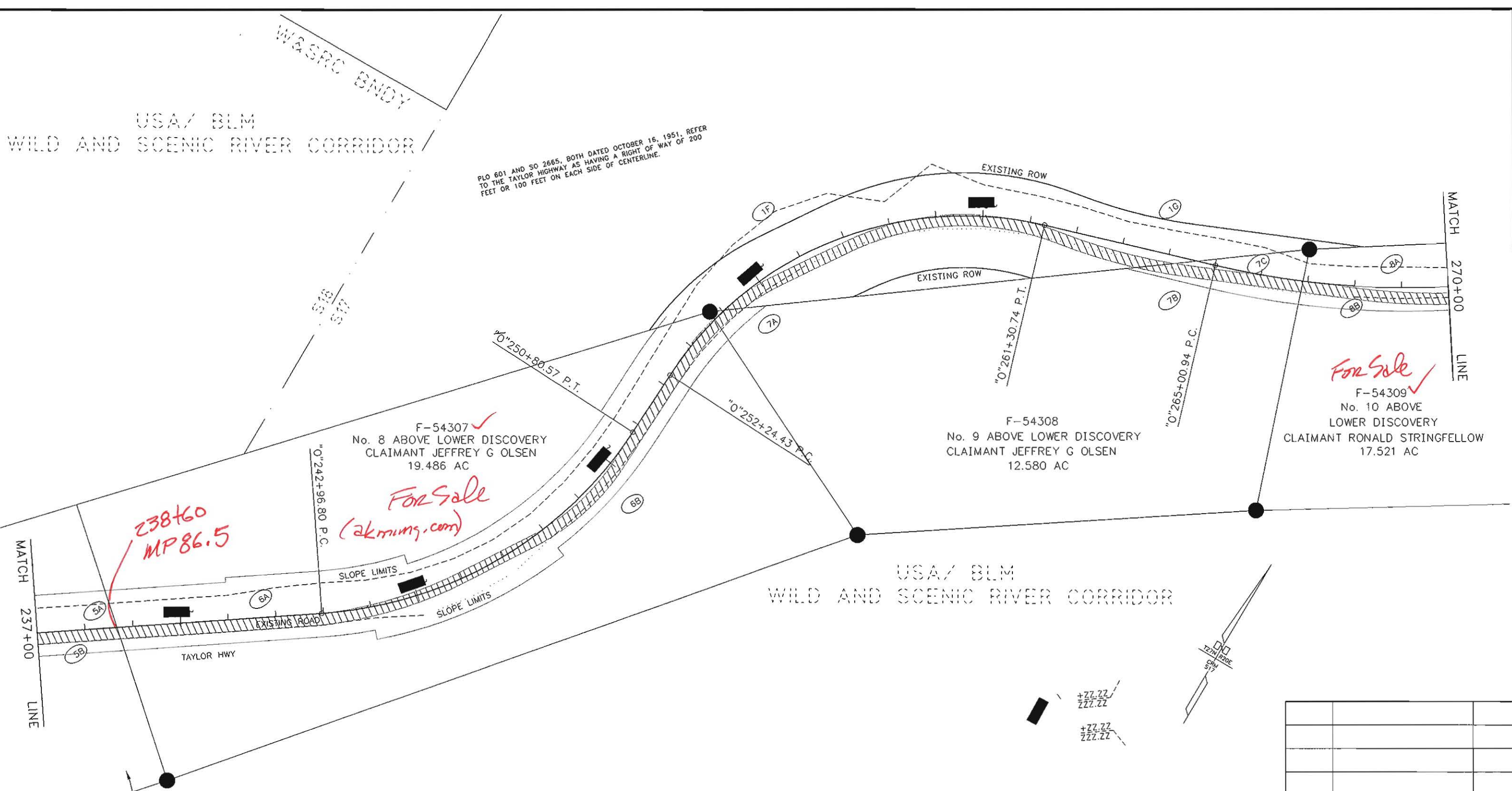
PARCEL NUMBER	OWNER(S)	LARGER PARCEL	ACQUISITION INCL. EXISTING EASEMENTS	NET ACQUISITION	REMAINDER
5B	USA/BLM-JUDY A OLSEN	LARGE	?????.?? SF	?????.?? SF	LARGE
5A	USA/BLM-JUDY A OLSEN	LARGE	?????.?? SF	?????.?? SF	LARGE
1E	USA/BLM	LARGE	?????.?? SF	?????.?? SF	LARGE
4D	USA/BLM-JUDY A OLSEN	LARGE	?????.?? SF	?????.?? SF	LARGE
4C	USA/BLM-JUDY A OLSEN	LARGE	?????.?? SF	?????.?? SF	LARGE
4B	USA/BLM-JUDY A OLSEN	LARGE	?????.?? SF	?????.?? SF	LARGE
4A	USA/BLM-JUDY A OLSEN	LARGE	?????.?? SF	?????.?? SF	LARGE
3B	USA/BLM-ELLEN JANE HART	LARGE	?????.?? SF	?????.?? SF	LARGE
3A	USA/BLM-ELLEN JANE HART	LARGE	?????.?? SF	?????.?? SF	LARGE

DATE	REVISION	BY

STATE OF ALASKA
DEPARTMENT OF TRANSPORTATION
AND
PUBLIC FACILITIES
RIGHT OF WAY MAP
ALASKA PROJECT NO.
FRCP-FRAF-STP-0785(11)/66446
TAYLOR HIGHWAY MP-64 TO
CANADIAN BORDER
SCALE: 1"= 100' SHEET 11 OF 50

USA/BLM
WILD AND SCENIC RIVER CORRIDOR

PL0 601 AND SO 2665, BOTH DATED OCTOBER 16, 1951, REFER TO THE TAYLOR HIGHWAY AS HAVING A RIGHT OF WAY OF 200 FEET OR 100 FEET ON EACH SIDE OF CENTERLINE.



For Sale
(akmining.com)

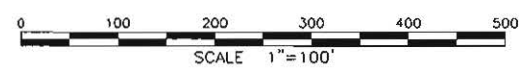
238+60
MP 86.5

For Sale
F-54309
No. 10 ABOVE
LOWER DISCOVERY
CLAIMANT RONALD STRINGFELLOW
17.521 AC

F-54307
No. 8 ABOVE LOWER DISCOVERY
CLAIMANT JEFFREY G OLSEN
19.486 AC

F-54308
No. 9 ABOVE LOWER DISCOVERY
CLAIMANT JEFFREY G OLSEN
12.580 AC

F-54328
No. 7 ABOVE
LOWER DISCOVERY
CLAIMANT GORDON & JUDY OLSEN
15.691 AC



PARCEL NUMBER	OWNER(S)	LARGER PARCEL	ACQUISITION INCL. EXISTING EASEMENTS	NET ACQUISITION	REMAINDER
1G	USA/BLM-JUDY A OLSEN	LARGE	?????.?? SF	?????.?? SF	LARGE
1F	USA/BLM-JUDY A OLSEN	LARGE	?????.?? SF	?????.?? SF	LARGE
8B	USA/BLM-JUDY A OLSEN	LARGE	?????.?? SF	?????.?? SF	LARGE
8A	USA/BLM-JUDY A OLSEN	LARGE	?????.?? SF	?????.?? SF	LARGE
7C	USA/BLM-JUDY A OLSEN	LARGE	?????.?? SF	?????.?? SF	LARGE
7B	USA/BLM-JUDY A OLSEN	LARGE	?????.?? SF	?????.?? SF	LARGE
7A	USA/BLM-JUDY A OLSEN	LARGE	?????.?? SF	?????.?? SF	LARGE
6B	USA/BLM-JUDY A OLSEN	LARGE	?????.?? SF	?????.?? SF	LARGE
6A	USA/BLM-JUDY A OLSEN	LARGE	?????.?? SF	?????.?? SF	LARGE
5B	USA/BLM-JUDY A OLSEN	LARGE	?????.?? SF	?????.?? SF	LARGE
5A	USA/BLM-JUDY A OLSEN	LARGE	?????.?? SF	?????.?? SF	LARGE

DATE	REVISION	BY

STATE OF ALASKA
DEPARTMENT OF TRANSPORTATION
AND
PUBLIC FACILITIES
RIGHT OF WAY MAP
ALASKA PROJECT NO.
FRCP-FRAF-STP-0785(11)/66446
TAYLOR HIGHWAY MP-64 TO
CANADIAN BORDER
SCALE: 1" = 100'
SHEET 12 OF 50

