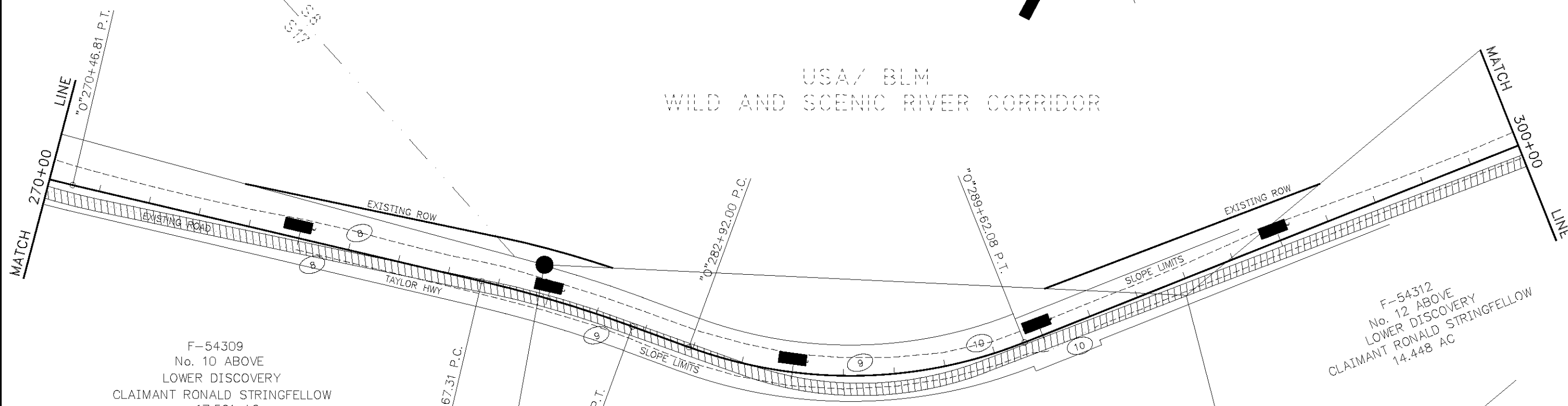


USA/ BLM
WILD AND SCENIC RIVER CORRIDOR



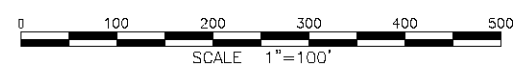
F-54309
No. 10 ABOVE
LOWER DISCOVERY
CLAIMANT RONALD STRINGFELLOW
17.521 AC

F-54310
No. 11 ABOVE LOWER DISCOVERY
CLAIMANT RONALD STRINGFELLOW
18.088 AC

F-54312
No. 12 ABOVE
LOWER DISCOVERY
CLAIMANT RONALD STRINGFELLOW
14.448 AC

USA/ BLM
WILD AND SCENIC RIVER CORRIDOR

USA/ BLM
W&SRC



DATE	REVISION

BLOCK1	BLOCK2	???? SF	???? SF	???? SF	???? SF
PARCEL	OWNER(S)	LARGER	ACQUISITION	NET	REMAINDER

STATE OF ALASKA
DEPARTMENT OF TRANSPORTATION
AND
PUBLIC FACILITIES
RIGHT OF WAY MAP
ALASKA PROJECT NO.
FRCP-FRAF-STP-0785(11)/66446
TAYLOR HIGHWAY MP-64 TO
CANADIAN BORDER
SCALE: 1"=100'

W&SRC BNDY

