

CERTIFICATE OF OWNERSHIP AND DEDICATION

I, the undersigned, hereby certify that I am the Director, Division of Land, and that the State of Alaska is the owner of the lands indicated hereon. I hereby approve this survey and this plot for the State of Alaska, and dedicate for public use, all easements as shown and described hereon.

6/14/97 *Jane Anvik*
 dated Director, Division of Land

NOTARY'S ACKNOWLEDGEMENT

Subscribed and sworn before me this 16 day of JUNE, 1997.

For **JANE ANVIK**

Paula Hancock
 Notary Public for Alaska
 My commission expires 12-10-2000

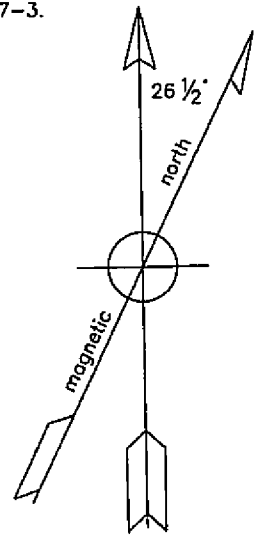


NOTES

- This survey was accomplished in accordance with State Plot Res. No. 97-3.
- All bearings shown are true bearings as oriented to the true meridian, and all distances shown are reduced to horizontal field distances.
- The accuracy of this survey is greater than 1:5000.
- All parcels of land owned by the State of Alaska, located within 50.00 feet of a surveyed or protracted section line, are subject to a 50 foot easement, each side of the section line, which is reserved to the State of Alaska for public highways under A.S. 19.10.010.
- The Basis of Bearings is the bearing of record between the original monuments (both recovered) of the north half of section line 20/21.
- The standard "F.S. monument" set by this survey was an aluminum post, 2 1/2 inches diameter, 30 inches long, with flared base, with a 3 inch diameter aluminum cap. A 6 foot aluminum signpost was placed beside each monument. A "Deep-I" magnet was buried at the base of each monument.
- The Forest Service surveyors who performed this survey were: George Blisset, George Cottrell, Helen Shear, Robert Mecus, and Sam Bunge.

LEGEND

- BLM. monument, recovered
- ASLS 83-7 monument, recovered
- ASLS 96-12 monument, set
- Surveyed Line
- Old R/W, Unsurveyed Line
- Line Calculated from Data on Record, Unsurveyed

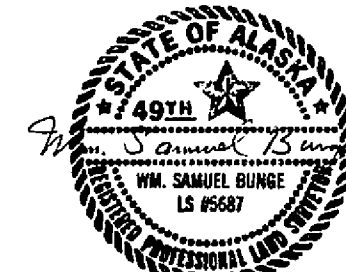


LAND SURVEYOR'S CERTIFICATE

I hereby certify that I am properly registered and licensed to practice land surveying in the State of Alaska, that this plot represents a survey made by me or under my direct supervision, that the monuments shown hereon actually exist as described, and that all dimensions and other details are correct, to the best of my professional knowledge and belief.

15 May 1997
 date

Registration Number RLS 5687

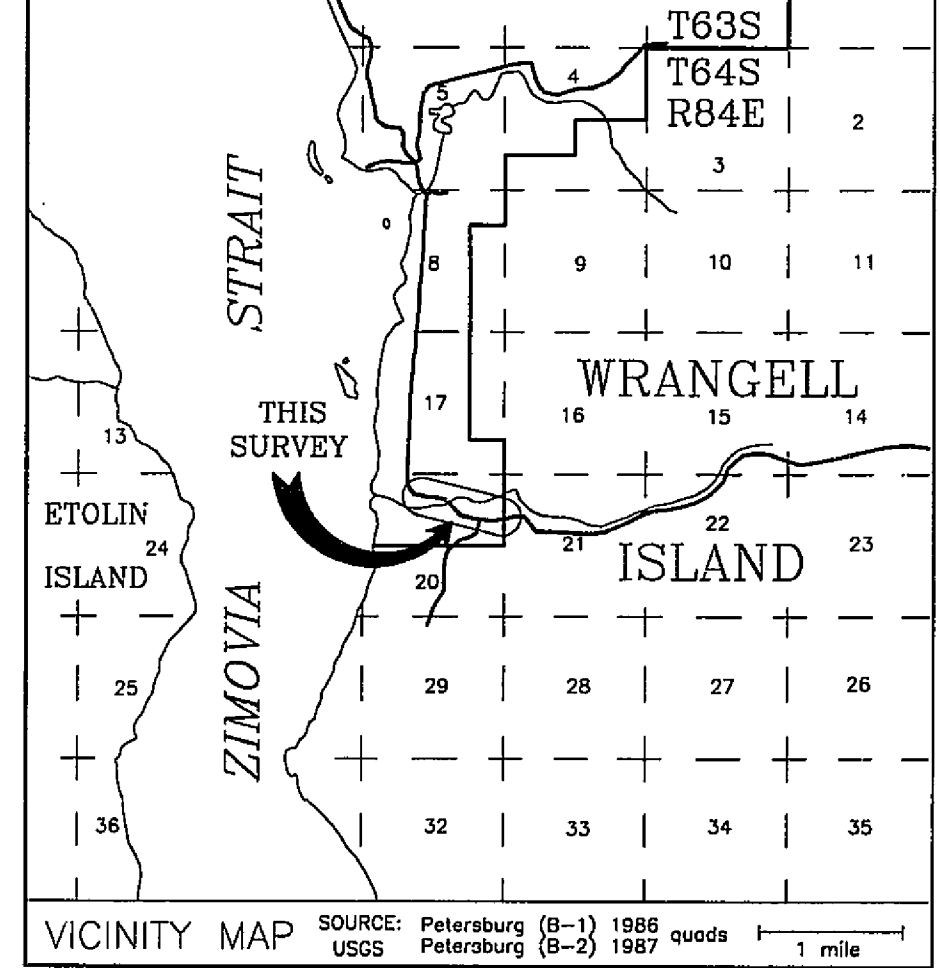


APPLICANT

Forest Service, U.S.D.A.
 P.O. Box 309
 Petersburg, Alaska
 99833

ACREAGE SUMMARY

- Tract A 68.21 acres
- Tract B 85.76 acres
- Tract C 69.61 acres
- Hwy R/W 9.96 acres
- ASLS 83-7 Block 2 Lot 1A 4.925 acres
- ASLS 83-7 Block 3 Lot 1A 9.128 acres



APPLICANT CERTIFICATE

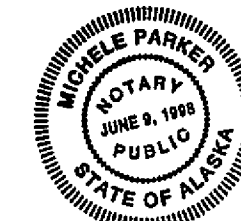
I hereby certify that I, the undersigned, am the Forest Supervisor, Sitikine Area, Tongass National Forest, and that the Forest Service, United States Department of Agriculture, is the applicant, as shown hereon. For the Forest Service, U.S.D.A., I hereby approve this survey and this plot. This survey was executed at my direction to support the management of National Forest land.

May 21, 1997 *Abigail R. Kimbell*
 date Forest Supervisor, Sitikine Area, Tongass N.F.

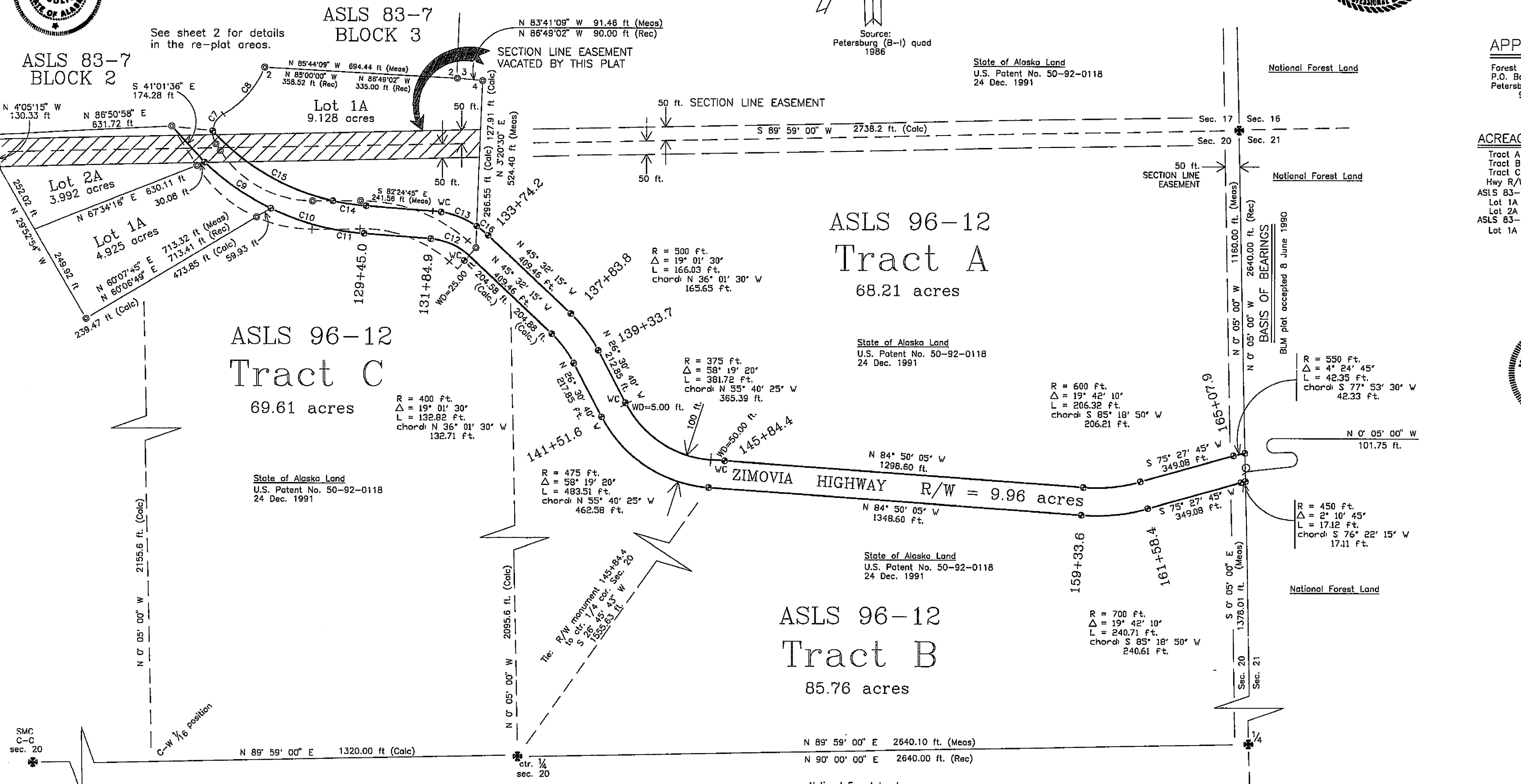
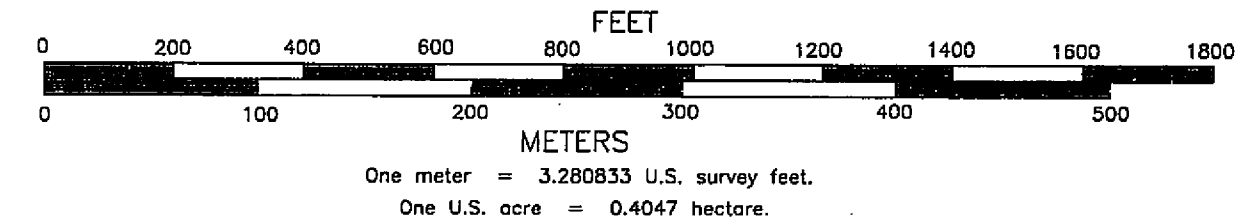
NOTARY'S ACKNOWLEDGEMENT

Subscribed and sworn before me this 21 day of May, 1997.

For **Abigail R. Kimbell**



Michelle Parker
 Notary Public for Alaska
 My commission expires June 9, 1998



MONUMENTS ESTABLISHED BY THIS SURVEY

- | | | | |
|---|--|--|--|
| <p>In R/W sideline, 50 ft. radial from @ P.C. 137+83.8, we set F.S. monument, with cap stamped as shown. Blazed & scribed "R/W BT":
 10 in. Hemlock, S 82° 25' E, 30.7 ft.
 18 in. Hemlock, N 4° 16' E, 17.6 ft.</p> <p>In R/W sideline, 50 ft. radial from @ P.C. 137+83.8, we set F.S. monument, with cap stamped as shown. Blazed & scribed "R/W BT":
 16 in. Hemlock, S 5° 09' E, 31.6 ft.
 16 in. Hemlock, S 84° 59' W, 57.0 ft.</p> <p>In R/W sideline, 50 ft. radial from @ P.T. 139+33.7, we set F.S. monument, with cap stamped as shown. Blazed & scribed "R/W BT":
 24 in. Hemlock, N 83° 56' E, 110.2 ft.
 14 in. Hemlock, N 24° 50' W, 65.9 ft.</p> <p>In R/W sideline, 50 ft. radial from @ P.T. 139+33.7, we set F.S. monument, with cap stamped as shown. Blazed & scribed "R/W BT":
 12 in. Hemlock, S 7° 29' E, 47.9 ft.
 14 in. Hemlock, S 47° 35' W, 13.2 ft.</p> | <p>As witness to point in R/W sideline, 50 ft. radial from @ P.C. 141+51.6, N 26° 30' 40" E in R/W sideline, 5.00 ft. from said true point, we set F.S. monument with cap stamped as shown. Blazed & scribed "X BT":
 18 in. Hemlock, S 66° 57' E, 58.5 ft.
 14 in. Hemlock, S 55° 53' E, 64.8 ft.
 10 in. Hemlock, N 35° 27' E, 107.6 ft.</p> <p>In R/W sideline, 50 ft. radial from @ P.T. 141.51.6, we set F.S. monument, with cap stamped as shown. Blazed & scribed "R/W BT":
 22 in. Hemlock, N 40° 44' W, 5.3 ft.
 4 in. Hemlock, S 27° 21' W, 18.3 ft.
 8 in. Hemlock, S 72° 48' W, 34.2 ft.</p> <p>Point 50 ft. radial from @ P.T. 145+84.4 falls in old road. As witness, S 84° 50' 05" E in R/W sideline, 50.00 ft. distant, we set F.S. monument, with cap stamped as shown. Blazed & scribed "X BT":
 6 in. Cedar, N 7° 06' E, 65.5 ft.
 12 in. Hemlock, N 19° 01' W, 70.6 ft.
 12 in. Hemlock, N 35° 17' W, 81.4 ft.</p> <p>In R/W sideline, 50 ft. radial from @ P.T. 145+84.4, we set F.S. monument, with cap stamped as shown. Blazed & scribed "R/W BT":
 10 in. Hemlock, S 53° 53' W, 27.7 ft.
 10 in. Cedar, S 15° 56' W, 23.7 ft.
 16 in. Hemlock, S 70° 22' E, 7.8 ft.</p> | <p>In R/W sideline, 50 ft. radial from @ P.C. 159+33.6, we set F.S. monument, with cap stamped as shown. Blazed & scribed "R/W BT":
 6 in. Hemlock, N 34° 56' W, 40.5 ft.
 12 in. Hemlock, N 10° 16' W, 14.6 ft.
 10 in. Hemlock, N 88° 48' E, 16.8 ft.</p> <p>In R/W sideline, 50 ft. radial from @ P.C. 159+33.6, we set F.S. monument, with cap stamped as shown. Blazed & scribed "R/W BT":
 6 in. Hemlock, S 47° 04' E, 20.8 ft.
 10 in. Hemlock, S 7° 07' W, 18.3 ft.
 8 in. Hemlock, S 64° 02' W, 18.0 ft.</p> <p>In R/W sideline, 50 ft. radial from @ P.T. 161+58.4, we set F.S. monument, with cap stamped as shown. Blazed & scribed "R/W BT":
 8 in. Pine, N 5° 52' E, 43.6 ft.
 6 in. Cedar, N 43° 32' E, 50.3 ft.
 16 in. Cedar, N 73° 15' W, 15.1 ft.</p> <p>In R/W sideline, 50 ft. radial from @ P.T. 161+58.4, we set F.S. monument, with cap stamped as shown. Blazed & scribed "R/W BT":
 8 in. Pine, S 68° 37' E, 39.1 ft.
 6 in. Cedar, S 16° 11' E, 19.4 ft.
 20 in. Hemlock, S 54° 39' W, 19.3 ft.</p> | <p>In R/W sideline, 50 ft. radial from @ P.C. 165+10.9, we set F.S. monument, with cap stamped as shown. Blazed & scribed "R/W BT":
 12 in. Cedar, N 72° 11' E, 13.8 ft.
 8 in. Hemlock, N 1° 54' W, 14.0 ft.
 12 in. Hemlock, N 42° 36' W, 17.8 ft.</p> <p>In R/W sideline, 50 ft. radial from @ P.C. 165+10.9, we set F.S. monument, with cap stamped as shown. Blazed & scribed "R/W BT":
 20 in. Cedar, S 21° 27' E, 11.8 ft.
 R/W monument in sec. line, N 76° 24' E, 17.11 ft.</p> <p>At intersection of section line 20/21 with R/W sideline arc 50 ft. northerly from @ , we set F.S. monument with cap stamped as shown. Blazed & scribed "R/W BT":
 10 in. Hemlock, N 33° 24' E, 33.0 ft.
 6 in. Hemlock, S 55° 22' E, 10.1 ft.
 8 in. Hemlock, N 59° 05' W, 30.6 ft.</p> <p>At intersection of section line 20/21 with R/W sideline arc 50 ft. southerly from @ , we set F.S. monument with cap stamped as shown. Blazed & scribed "R/W BT":
 10 in. Hemlock, S 73° 11' E, 37.7 ft.
 12 in. Cedar, S 20° 39' E, 29.5 ft.
 20 in. Cedar, S 39° 37' W, 19.1 ft.</p> |
|---|--|--|--|

WRANGELL RECORDING DISTRICT	
DATE OF SURVEY	NAME OF SURVEYOR
Beginning 30 May 1996	Wm. Samuel Bunge
Ending 13 Aug. 1996	U.S. Forest Service
	P.O. Box 309
	Petersburg, Alaska 99833

STATE OF ALASKA
 DEPARTMENT OF NATURAL RESOURCES
 DIVISION OF LAND
 ANCHORAGE, ALASKA

Alaska State Land Survey No. 96-12

A Re-Plat of Lots 1 and 2, Block 2 and Lot 1, Block 3 of ASLS 83-7;

Dedication of the Right-of-Way for Forest Highway No. 16,

Zimovia Highway;

Section Line Easement Vacation;

and Subdivision of E 1/2 NW 1/4 and NE 1/4 of

Section 20, T. 64 S., R. 84 E.,

Copper River Meridian

Wrangell Island, Alaska Sheet 1 of 2

DRAWN BY Sam Bunge Dec. 1996

Approval Recommended *Herald Jennings* 6-13-97
 SCALE 1 inch = 200 feet CHECKED S.B. FILE No. A.S.L.S. 96-0012 EV-2-871

WRANGELL 97-11

MONUMENTS ESTABLISHED BY THIS SURVEY

At intersection of extension of lot line 1/2 of Block 2 with new southerly R/W sideline curve, we set F.S. monument, with cap stamped as shown.
 Cor. 1, Lot 1A, S 54° 05' E, 289.90 ft.
 Cor. 4, Lot 1, S 67° 39' W, 29.83 ft.
 Cor. 4, Lot 2, N 40° 58' W, 174.06 ft.



In R/W sideline, 50 ft. radial from C.P.T. 129+45.0, we set F.S. monument, with cap stamped as shown.
 Blazed & scribed "R/W BT":
 12 in. Hemlock, N 62° 50' W, 12.2 ft.
 12 in. Hemlock, N 17° 13' E, 28.9 ft.



At intersection of curve 9-10, Lot 1, Block 3, ASLS 83-7 with northerly sideline curve of new R/W, we set F.S. monument with cap stamped as shown.
 Blazed & scribed "R/W BT":
 20 in. Cedar, S 63° 20' E, 49.3 ft.
 16 in. Hemlock, N 62° 03' E, 98.4 ft.
 Cor. 4, Lot 2, Block 2, N 82° 31' W, 147.61 ft.



In R/W sideline, 50 ft. radial from C.P.T. 129+45.0, we set F.S. monument, with cap stamped as shown.
 Blazed & scribed "R/W BT":
 12 in. Spruce, S 37° 09' E, 23.4 ft.
 12 in. Hemlock, S 19° 48' W, 22.8 ft.



At intersection of extension of southeasterly line of Lot 1, Block 2 with new southerly R/W sideline curve, we set F.S. monument, with cap stamped as shown.
 Blazed & scribed "R/W BT":
 12 in. Pine, S 29° 30' W, 85.8 ft.
 14 in. Spruce, S 60° 18' E, 129.6 ft.
 Cor. 1, Lot 1, Block 2, S 60° 08' W, 59.93 ft.



As witness to point in R/W sideline, 50 ft. radial from C.P.C. 131+84.9, 50.00 ft. easterly in the curve (chord: S 82°27'15" E, 29.95 ft.) from said true point we set F.S. monument, with cap stamped as shown.
 Blazed & scribed "X BT":
 10 in. Hemlock, S 77° 22' E, 40.5 ft.
 6 in. Cedar, N 52° 21' E, 45.6 ft.
 10 in. Pine, N 3° 39' W, 33.7 ft.



At intersection of line 7-8, Lot 1, Block 3, ASLS 83-7 with northerly sideline curve of new R/W, we set F.S. monument with cap stamped as shown.
 Blazed & scribed "R/W BT":
 10 in. Pine, N 81° 55' E, 32.6 ft.
 10 in. Spruce, N 30° 33' E, 38.3 ft.
 12 in. Cedar, N 14° 34' W, 27.7 ft.



In R/W sideline, 50 ft. radial from C.P.C. 131+84.9, we set F.S. monument, with cap stamped as shown.
 Blazed & scribed "R/W BT":
 22 in. Hemlock, S 24° 03' W, 41.9 ft.
 16 in. Hemlock, S 53° 35' W, 52.8 ft.
 10 in. Hemlock, S 84° 31' W, 52.4 ft.



At intersection of line 4-5, Lot 1, Block 3 of ASLS 83-7 with northerly sideline curve of new R/W, we set F.S. monument with cap stamped as shown.
 Blazed & scribed "R/W BT":
 14 in. Hemlock, N 44° 38' W, 42.3 ft.
 16 in. Cedar, N 9° 27' E, 67.6 ft.
 16 in. Hemlock, N 49° 08' E, 13.8 ft.



In R/W sideline, 50 ft. radial from C.P.T. 133+74.2, we set F.S. monument, with cap stamped as shown.
 Blazed & scribed "R/W BT":
 22 in. Cedar, N 55° 13' E, 23.2 ft.
 6 in. Hemlock, N 8° 15' E, 25.3 ft.
 14 in. Hemlock, N 58° 19' W, 22.3 ft.



As witness to point in R/W sideline, 50 ft. radial from C.P.T. 133+74.2, on radial line S 43°33'30" W, 25.00 ft. on radial line from said true point, we set F.S. monument, with cap stamped as shown.
 Blazed & scribed "X BT":
 18 in. Hemlock, S 50° 58' W, 86.3 ft.
 18 in. Hemlock, S 76° 30' W, 59.0 ft.
 6 in. Spruce, N 77° 53' W, 38.7 ft.



CURVE DATA

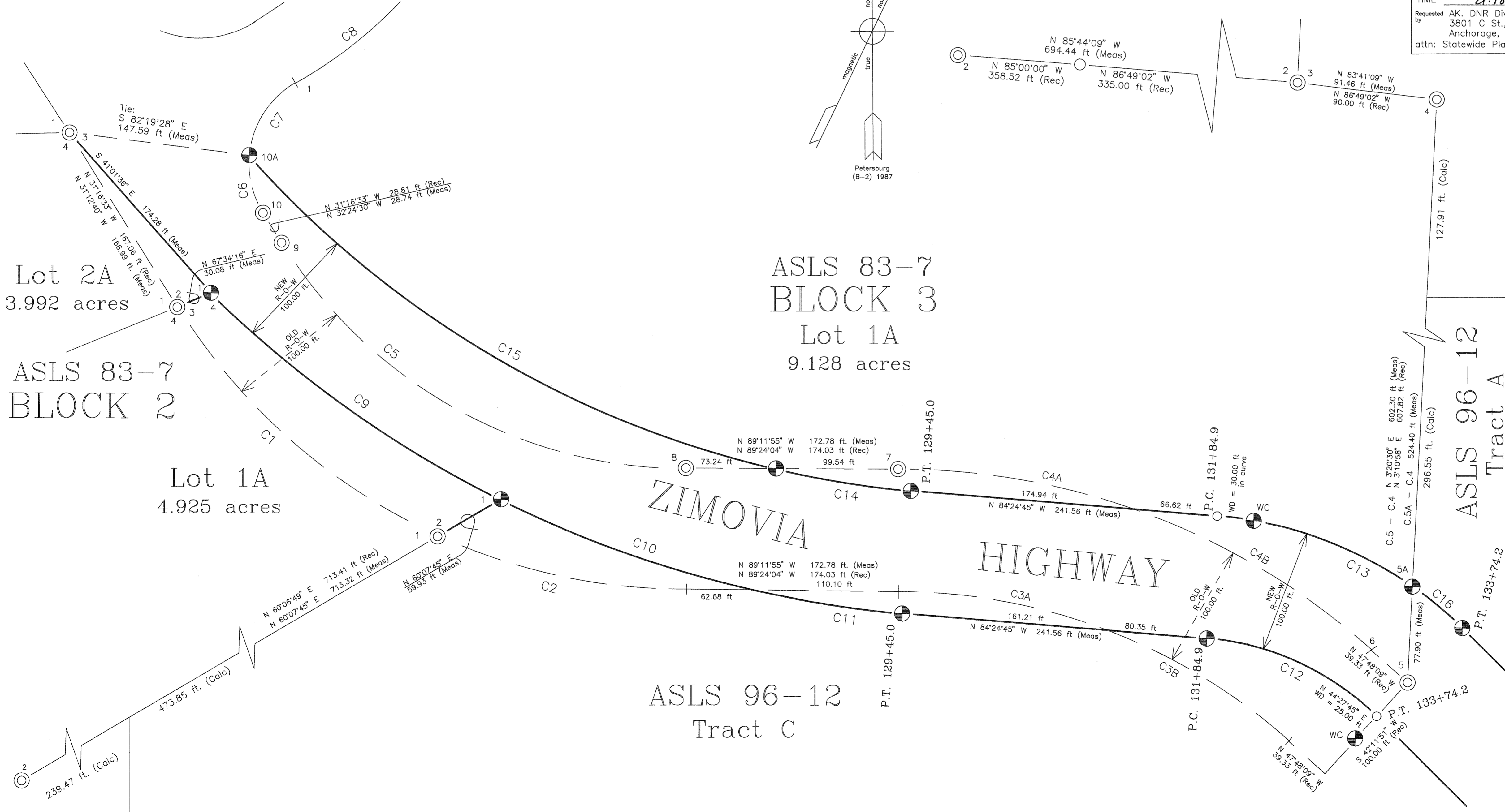
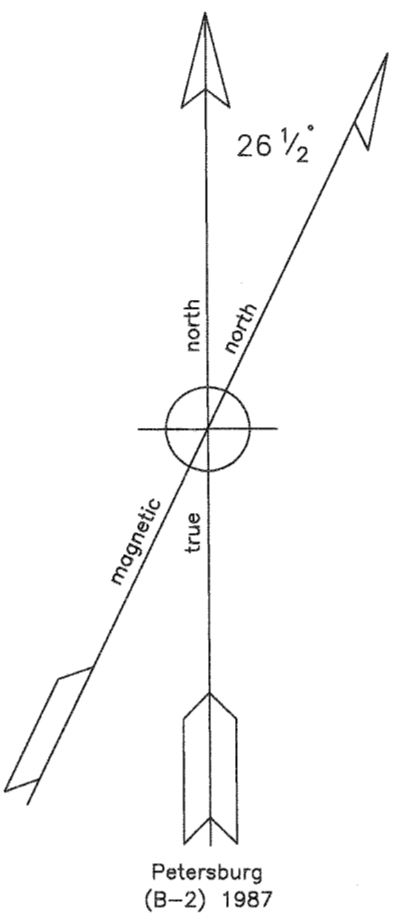
CENTRAL ANGLE	RADIUS	ARC LENGTH	ASLS 81-7 (Record)		ASLS 96-12 (Measured)	
			CHORD LENGTH	CHORD BEARING	CHORD LENGTH	CHORD BEARING
C1	33°43'48"	487.07 ft	286.74 ft	282.61 ft. N 48°08'27" W	282.55 ft.	N 48°08'30" W
C2	24°23'45"	487.07 ft	207.39 ft	205.83 ft. N 77°12'17" W	206.30 ft.	N 77°08'37" W
C3A	20°52'03"	480.60 ft	175.04 ft	174.07 ft.* N 78°58'03" W*	176.11 ft.	N 78°59'07" W
C3B	20°43'52"	480.60 ft	173.89 ft	172.95 ft.* N 58°10'11" W*	171.18 ft.	N 58°03'22" W
C4A	19°23'02"	580.60 ft	196.42 ft	195.42 ft.* N 79°42'33" W*	197.62 ft.	N 79°39'16" W
C4B	22°12'53"	580.60 ft	225.11 ft	223.70 ft.* N 58°54'36" W*	221.65 ft.	N 58°49'23" W
C5	58°07'31"	387.07 ft	392.67 ft	376.06 ft. N 60°20'19" W	376.81 ft.	N 60°24'00" W
C6	36°55'14"	76.13 ft	49.06 ft	48.21 ft.* N 12°48'56" W*	48.08 ft.	N 12°47'17" W
C7	55°28'47"	76.13 ft	73.72 ft	70.87 ft.* N 33°23'04" E*	70.87 ft.	N 33°23'04" E
C8	37°03'18"	355.12 ft	229.67 ft	225.69 ft. N 42°35'48" E	225.72 ft.	N 42°14'25" E
C9	18°01'54"	925.00 ft	291.11 ft		289.70 ft.	N 54°03'32" W
C10	14°00'01"	925.00 ft	226.02 ft		225.55 ft.	N 70°08'10" W
C11	7°41'15"	925.00 ft	124.11 ft		124.05 ft.	N 80°58'36" W
C12	39°26'57"	225.00 ft	154.92 ft		150.05 ft.	N 64°56'14" W
C13	30°09'10"	325.00 ft	171.04 ft		166.95 ft.	N 70°01'47" W
C14	8°26'10"	825.00 ft	121.47 ft		121.39 ft.	N 80°35'14" W
C15	35°11'32"	825.00 ft	506.73 ft		498.75 ft.	N 58°46'42" W
C16	9°17'47"	325.00 ft	52.73 ft		52.70 ft.	N 50°02'17" W

* calculated from data of record

LEGEND

- ASLS 83-7 monument, recovered
- ASLS 96-12 monument, set
- True position for corner
- Surveyed Line
- Old Right-of-Way, Unsurveyed Line

97-11
 RECORDED
 WRANGELL
 RECORDING DISTRICT
 DATE July 2, 1997
 TIME 2:18 pm
 Requested by AK, DNR Div. of Land
 3801 C St., Ste. 1110
 Anchorage, AK 99503
 attn: Statewide Platting Super.



SECTION LINE EASEMENT VACATION CERTIFICATE
 APPROVAL RECOMMENDATION

STATE OF ALASKA DEPARTMENT OF TRANSPORTATION
 AND PUBLIC FACILITIES

The vacation statement, as shown hereon, has been reviewed by the Southeastern Region Officer and is hereby recommended for approval by the Commissioner.

Recommended by: [Signature] Date 6/25/97
 Regional Chief Right-of-Way Agent
 Acting

STATE OF ALASKA
 DIVISION OF LAND

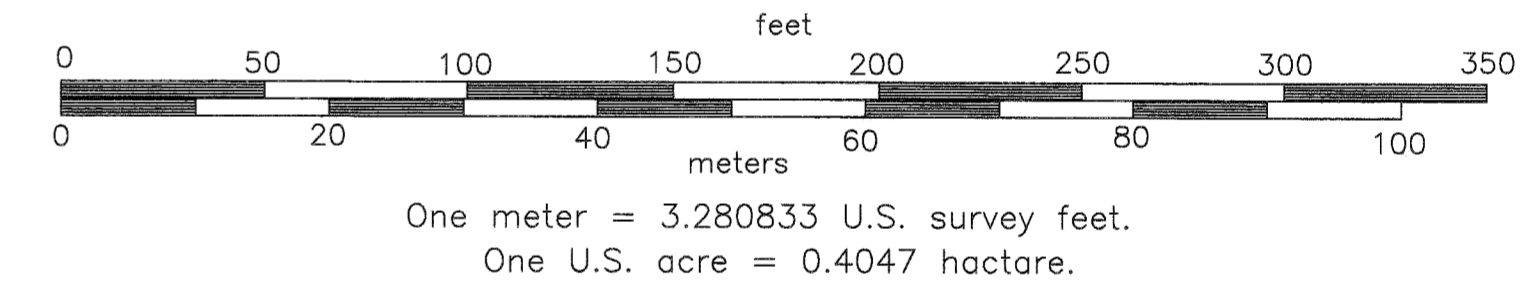
The vacation statement, as shown hereon, has been reviewed by the Division of Land and is hereby recommended for approval by the Commissioner.

Recommended by: [Signature] Date 4/13/97
 Director, Division of Land

The State of Alaska, acting by and through the Commissioner of the Department of Natural Resources and the Commissioner of the Department of Transportation and Public Facilities, does hereby state and declare that the State of Alaska vacates and releases all right and title to any and all portions of section line easements for public highways reserved to it under AS 19.10.010, as shown by diagonal hatching along a portion of the line between sections 17 and 20, T. 64 S., R. 84 E., Copper River Meridian.

Approved: [Signature]
 Commissioner
 Department of Transportation
 and Public Facilities

Date 6-25-97
 Approved: [Signature]
 Commissioner
 Department of Natural Resources



WRANGELL RECORDING DISTRICT	
DATE OF SURVEY Beginning 30 May 1996 Ending 13 Aug. 1996	NAME OF SURVEYOR Wm. Samuel Bunge U.S. Forest Service P.O. Box 309 Petersburg, Alaska 99833
STATE OF ALASKA DEPARTMENT OF NATURAL RESOURCES DIVISION OF LAND ANCHORAGE, ALASKA	
Alaska State Land Survey No. 96-12	
A Re-Plat of Lots 1 and 2, Block 2 and Lot 1, Block 3 of ASLS 83-7; Dedication of the Right-of-Way for Forest Highway No. 16, Zimovia Highway; Section Line Easement Vacation; and Subdivision of E 1/2 NW 1/4 and NE 1/4 of Section 20, T. 64 S., R. 84 E., Copper River Meridian Wrangell Island, Alaska Sheet 2 of 2	
DRAWN BY Sam Bunge Dec. 1996	Approval Recommended <u>[Signature]</u> Statewide Platting Supervisor 6-13-97 date
SCALE 1 inch = 50 feet	CHECKED S.B. FILE No. A.S.L.S. 96-0012 EV-2-671