

U.S. SURVEY No. 3709, ALASKA

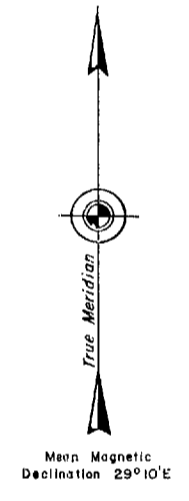
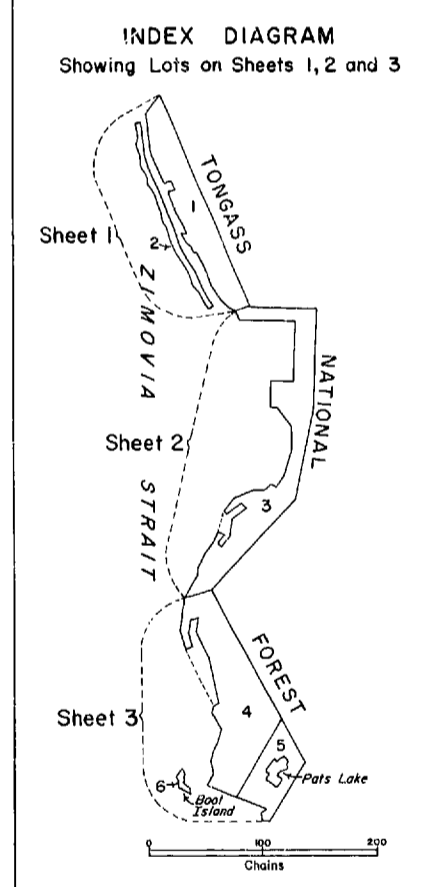
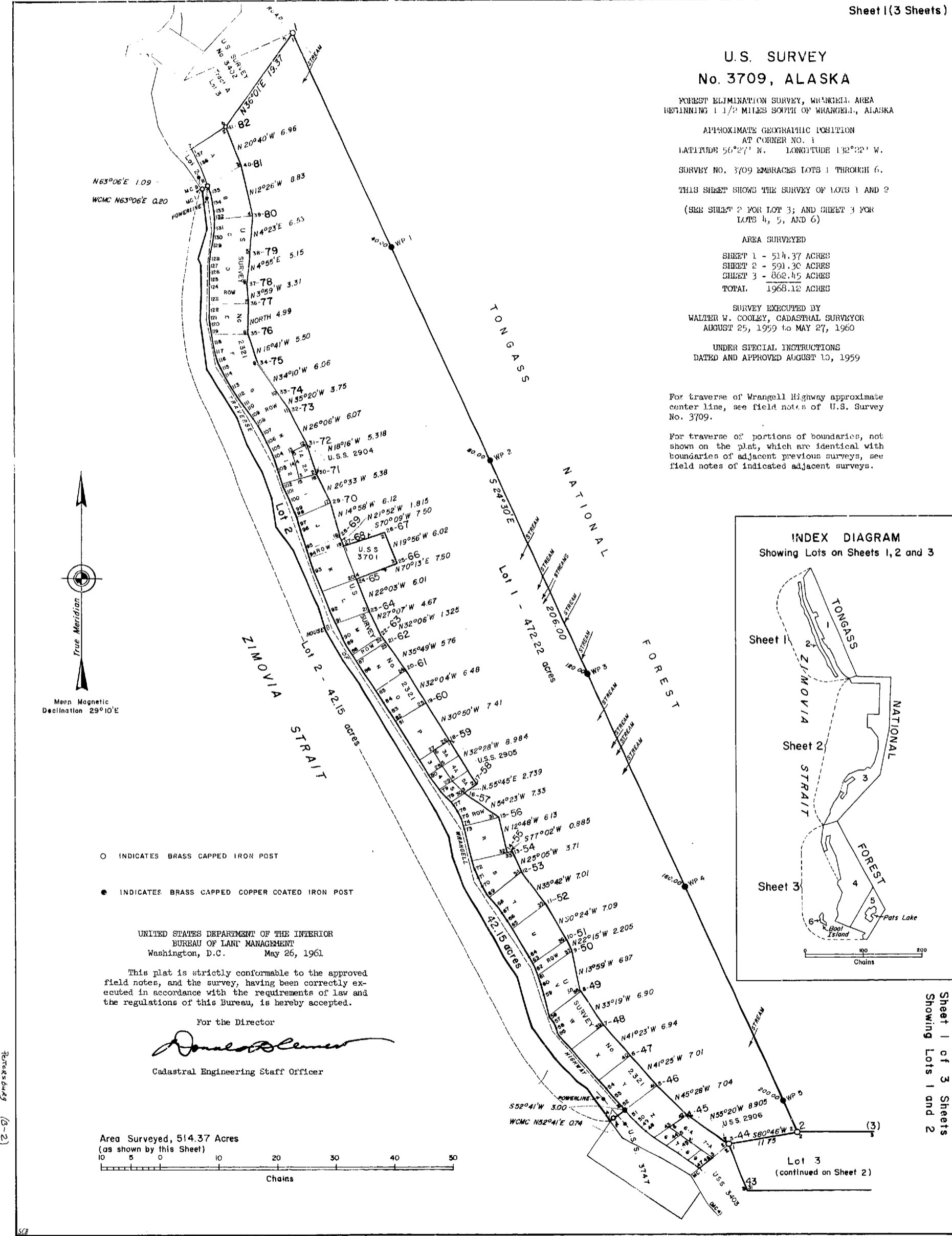
FOREST ELIMINATION SURVEY, WRANGELL AREA
BEGINNING 1 1/2 MILES SOUTH OF WRANGELL, ALASKA
APPROXIMATE GEOGRAPHIC POSITION
AT CORNER NO. 1
LATITUDE 56°27' N. LONGITUDE 132°32' W.
SURVEY NO. 3709 EMBRACES LOTS 1 THROUGH 6.
THIS SHEET SHOWS THE SURVEY OF LOTS 1 AND 2
(SEE SHEET 2 FOR LOT 3; AND SHEET 3 FOR
LOTS 4, 5, AND 6)

AREA SURVEYED
SHEET 1 - 514.37 ACRES
SHEET 2 - 591.30 ACRES
SHEET 3 - 862.45 ACRES
TOTAL - 1968.12 ACRES

SURVEY EXECUTED BY
WALTER W. COOLEY, CADASTRAL SURVEYOR
AUGUST 25, 1959 to MAY 27, 1960
UNDER SPECIAL INSTRUCTIONS
DATED AND APPROVED AUGUST 13, 1959

For traverse of Wrangell Highway approximate
center line, see field notes of U.S. Survey
No. 3709.

For traverse of portions of boundaries not
shown on the plat, which are identical with
boundaries of adjacent previous surveys, see
field notes of indicated adjacent surveys.

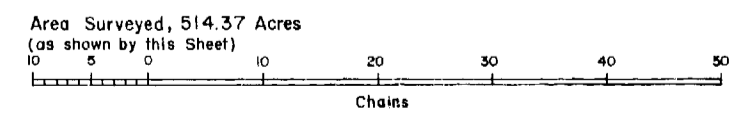


- INDICATES BRASS CAPPED IRON POST
- INDICATES BRASS CAPPED COPPER COATED IRON POST

UNITED STATES DEPARTMENT OF THE INTERIOR
BUREAU OF LAND MANAGEMENT
Washington, D.C. May 26, 1961

This plat is strictly conformable to the approved
field notes, and the survey, having been correctly ex-
ecuted in accordance with the requirements of law and
the regulations of this Bureau, is hereby accepted.

For the Director
Donald S. ...
Cadastral Engineering Staff Officer



30m 37/1087/1300/1385
(3-2)

U.S. SURVEY No. 3709
Sheet 1 of 3 Sheets
Showing Lots 1 and 2

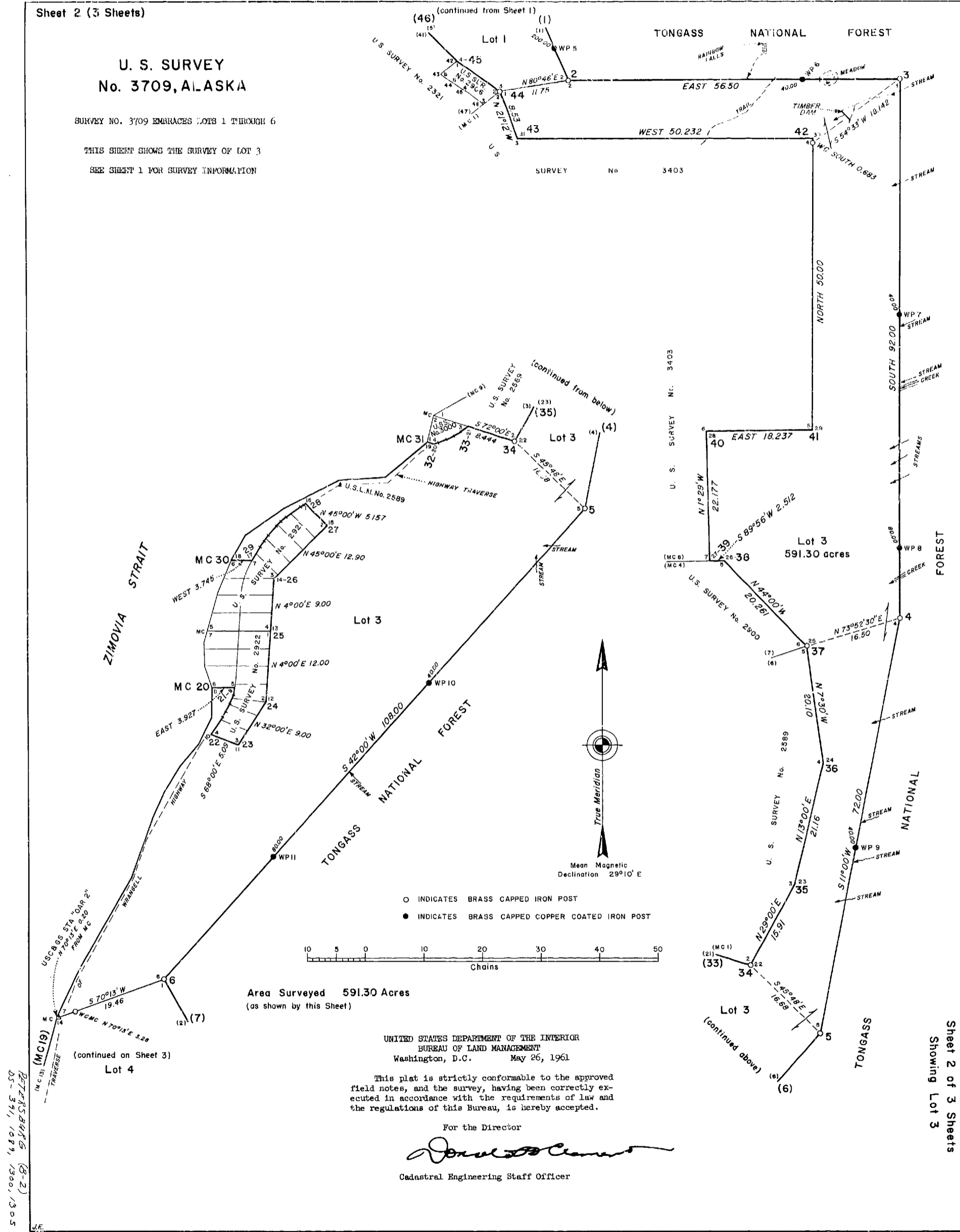
Sheet 2 (3 Sheets)

U. S. SURVEY
No. 3709, ALASKA

SURVEY NO. 3709 EMBRACES LOTS 1 THROUGH 6

THIS SHEET SHOWS THE SURVEY OF LOT 3

SEE SHEET 1 FOR SURVEY INFORMATION



REVISIONS
B-2
05-31, 1979, 1980, 1985

U. S. SURVEY No. 3709
Sheet 2 of 3 Sheets
Showing Lot 3

U. S. SURVEY No. 3709, ALASKA

SURVEY NO. 3709 EMBRACES LOTS 1 THROUGH 6

THIS SHEET SHOWS THE SURVEY OF LOTS 4, 5, AND 6

SEE SHEET 1 FOR SURVEY INFORMATION

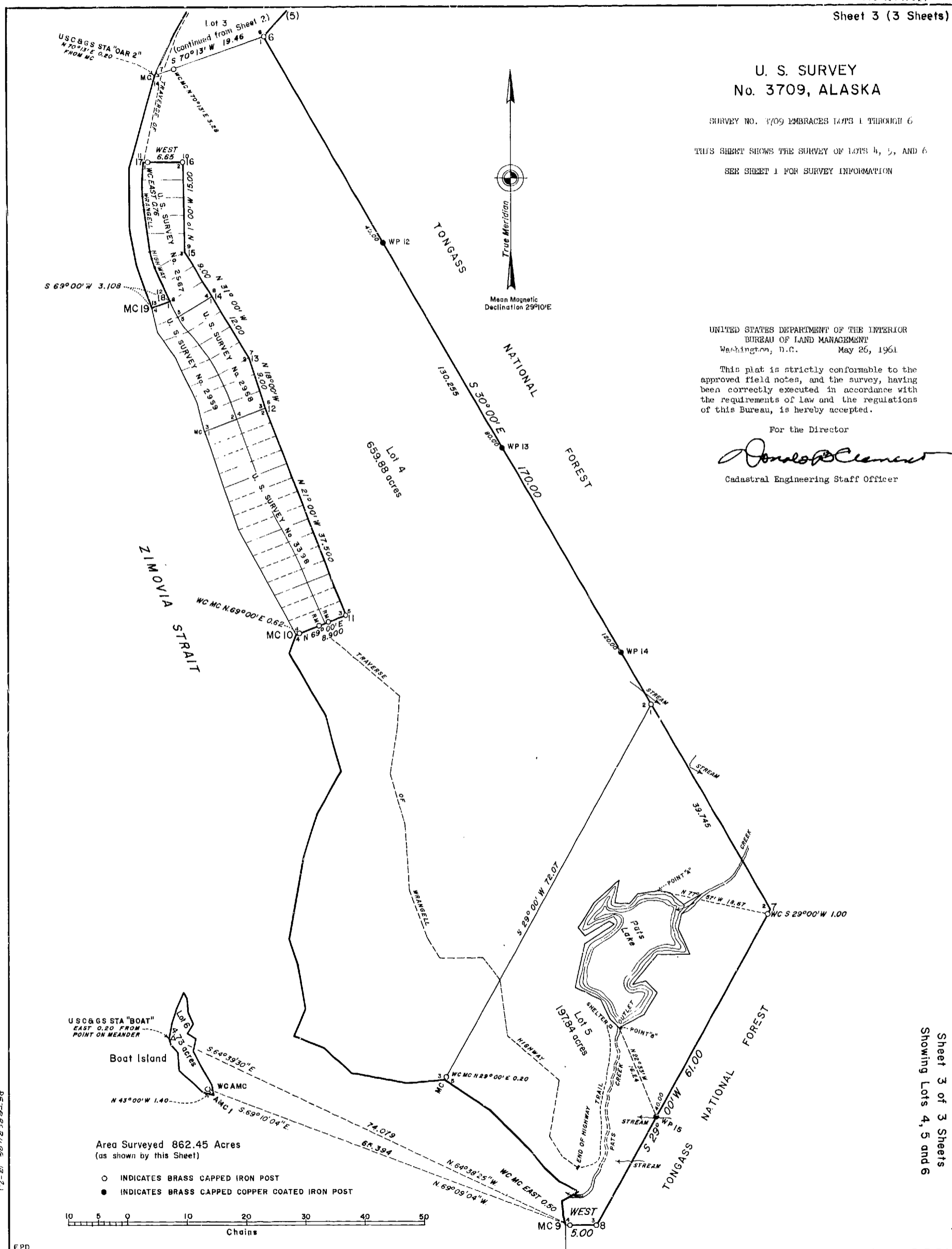
UNITED STATES DEPARTMENT OF THE INTERIOR
BUREAU OF LAND MANAGEMENT
Washington, D.C. May 26, 1961

This plat is strictly conformable to the approved field notes, and the survey, having been correctly executed in accordance with the requirements of law and the regulations of this Bureau, is hereby accepted.

For the Director

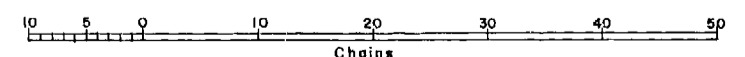
Donald C. Clemens

Cadastral Engineering Staff Officer



Area Surveyed 862.45 Acres
(as shown by this Sheet)

- INDICATES BRASS CAPPED IRON POST
- INDICATES BRASS CAPPED COPPER COATED IRON POST



REPERESBARK (B-2)
DS-3811, 1089, 1300, 1305

EPD

U. S. SURVEY No. 3709
Sheet 3 of 3 Sheets
Showing Lots 4, 5 and 6

UNITED STATES
DEPARTMENT OF THE INTERIOR
BUREAU OF LAND MANAGEMENT

FIELD NOTES

OF

U.S. SURVEY NO. 370

ENCOMPASSING LOTS 1 THROUGH 11

FOREST RELOCATION SURVEY

WAGGELL AREA

BEGINNING 1 1/2 MILES SOUTH OF

WAGGELL, ALASKA

SITUATED

APPROXIMATE

LATITUDE 57°27' N LONGITUDE 132°02' W

AT CORNER NO. 1

Of the _____ Meridian,

In the State of _____ ALASKA

EXECUTED BY

WALTER W. COOLEY, CADASTRAL SURVEYOR

Under special instructions dated _____ AUGUST 10 _____, 1951, which provided
for the surveys included under ~~Group~~ SURVEY No. 370, approved AUGUST 10, 1951
and assignment instructions dated _____ AUGUST 10 _____, 1951

Survey commenced _____ AUGUST 25 _____, 1951

Survey completed _____ MAY 27 _____, 1950

U.S. SURVEY 3709

Chain

Survey commenced August 25, 1959, and executed with a W. and L.E. Gurley transit, Serial No. 560382, of which the horizontal plate is read by double opposite verniers to single minutes of arc, which is also the least count on the vernier of the vertical circle. After satisfactory tests the instrument is found free from appreciable error. Prior to beginning the survey, I examine all the adjustments of the transit and find them correct.

All measurements are made with a 5 chain steel tape, graduated to single links throughout. The tape is tested on a base laid out with a 66 foot standard steel tape and found correct. All measurements are made on the slope and the vertical angle for each interval determined with the transit circle; the horizontal equivalents are entered in the field note record.

The approximate geographical position of cor. No. 1 is scaled from the U.S. Coast and Geodetic Survey Map No. 8161, Edition of 1959, and recorded to the nearest half minute in these notes as latitude $56^{\circ}27'$ N, longitude $132^{\circ}22'$ W.

The azimuth used is determined from numerous observations upon the sun taken throughout the course of the survey, both A.M. and P.M., and carried to all parts of the survey by taking the mean of direct and reverse deflection angles at each instrument station.

The mean magnetic declination is $29^{\circ}10'$ E.

PRELIMINARY STATEMENT

This survey is comprised of 6 Lots. Lots 1, 3, 4 and 5 are contiguous, bounded on the north by U.S. Survey No. 3402, on the east and south by the National Forest boundary line, on the west a portion of the survey is adjacent to U.S. Surveys Nos. 2321, 2904, 2906, 3701, 2905, 3403, 2900, 2589, 3000, 3534, 2921, 2922, 2967, 2968, 2969, and 3398, the remaining portion is bounded by the easterly shore line of Zimovia Strait. Lot 6 is a small island near the southerly end of the survey. Lot 2 is bounded on the north by U.S. Survey No. 3402, on the east by a portion of U.S. Survey No. 2321, and on the west by the easterly shore of Zimovia Strait.

The description of monuments, bearings and distances, of previous U.S. Surveys of record, bounding this survey, unless otherwise mentioned, are to be found in the official record of those surveys.

The bearings and distances of the interior lot lines of this survey are not included in these notes, but all details of such subdivision have been carried to the plat and are appropriately shown thereon.

"National Forest Boundary" signs are placed on trees at approximately 5 chain intervals, trails and large creek crossings, throughout the length of the Tongass National Forest boundary line.

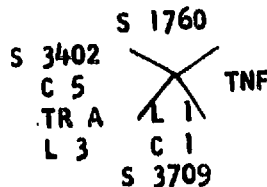
Bearing tree signs were placed on all bearing trees pertaining to this survey.

Begin at point for cor. No. 1, identical with cor. No. 1, Lot 1, and

U.S. SURVEY NO. 3709

Chains

Cor. No. 5, U.S. Survey No. 3402, Tract A, which is monumented with a regulation brass capped iron post, 1 ins. diam., extending 4 ins. above ground, firmly set, mkd. and witnessed as described in the official record of U.S. Survey No. 3402. I add mks. to brass cap to now read:



1955

S 24° 30' E.

On line 1-2, identical with line 1-2, Lot 1, and Tongass National Forest boundary.

Thence over level land, through cleared area.

- 0.80 Intersect graded road, bears N 45° W and S 45° E.
- 3.00 Crest, bears W and S 45° E; descend 70 ft. over southerly slope, through spruce, hemlock and cedar timber, alder and berry bush undergrowth.
- 7.00 Small stream, 12 lks. wide, course S 30° W, ascend 100 ft. over NW slope.
- 13.50 Slope now westerly, ascend 530 ft. over steep westerly slope.
- 27.00 Top of rise, descend 100 ft. over southerly slope.
- 35.00 Begin ascent of 30 ft. over SW slope.
- 40.00 Establish witness point No. 1.

Set a regulation brass capped, copper coated iron post, 30 ins. long, 3/4 ins. diam., 26 ins. in the ground, with brass cap mkd.

S 3709

WP

+

NO 1

1959

from which

A spruce, 24 ins. diam., bears S 55° W, 34 lks. dist., mkd. S 3709 WP NO 1 BT.

A spruce, 26 ins. diam., bears S 40° W, 27 lks. dist., mkd. S 3709 WP NO 1 BT.

Begin gradual descent over steep SW slope, through spruce, hemlock and cedar timber, alder and berry bush undergrowth.

- 80.00 Establish witness point No. 2.

Set a regulation brass capped, copper coated iron post, 30 ins. long, 3/4 ins. diam., 18 ins. in the ground and in a mound of stone, with brass cap mkd.

U.S. SURVEY NO. 370

Chain

S 370
 WP
 +
 NO 2
 1959

from which

A spruce, 30 ins. diam., bears S 18° W, 40 lks. dist., mkd.
 S3709 WP NO 2 BT.

A hemlock, 8 ins. diam., bears N 60° W, 25 lks. dist., mkd.
 X-BT.

Continue over steep SW slope.

- 95.50 Small stream, 6 lks. wide, in rocky gorge 30 ft. deep, course SW.
 102.00 Small stream, 6 lks. wide, in rocky gorge 30 ft. deep, course SW.
 103.70 Small stream, 4 lks. wide, in gully 20 ft. deep, course SW.
 104.70 Small stream, 6 lks. wide, course SW.
 110.50 Small stream, 6 lks. wide, in rocky gorge 30 ft. deep, course SW.
 117.50 Small stream, 6 lks. wide, in gully 30 ft. deep, course SW.
 120.00 Establish witness point No. 3.

Set a regulation brass capped, copper coated iron post, 30 ins. long,
 3/4 ins. diam., 18 ins. in the ground to bedrock and in a mound of
 stone to top of monument, with brass cap mkd.

S 3709
 WP
 +
 NO 3

1959

from which

A hemlock, 6 ins. diam., bears N 65° W, 47 lks. dist., mkd.
 X-BT.

A hemlock, 24 ins. diam., bears S 30° W, 29 lks. dist., mkd.
 X-BT.

Continue gradual descent over steep SW slope.

- 126.70 Small stream, 4 lks. wide, in gulch 25 ft. deep, course SW.
 132.00 Small stream, 6 lks. wide, in rocky ravine 30 ft. deep, course SW.
 133.50 Small stream, 4 lks. wide, in rocky gulch, 20 ft. deep, course SW.
 137.00 Small stream, 6 lks. wide, in rocky gulch 30 ft. deep, course SW.
 160.00 Establish witness point No. 4.

Set a regulation brass capped, copper coated iron post, 30 ins. long,
 3/4 ins. diam., 20 ins. in the ground and in a mound of stone to top

111

U.S. SURVEY NO. 3709

Chains of monument, with brass cap mkd.

S 3709

WP

+

NO 4

1953

from which

A spruce, 30 ins. diam., bears S, 27 lks. dist., mkd. X-BT.

A hemlock, 18 ins. diam., bears N 10° W, 5 lks. dist., mkd. X-BT.

Continue gradual descent over SW slope.

180.00 Thence over nearly level land along gentle SW slope.

133.00 Small stream, 10 lks. wide, in rocky gulch 20 ft. deep, course SW.

200.00 Establish witness point No. 5.

Set a regulation brass capped, copper coated iron post, 30 ins. long, 3/4 ins. diam., 20 ins. in the ground, with brass cap mkd.

S 3709

WP

+

NO 5

1953

from which

A cedar, 30 ins. diam., bears N 13° W, 29 1/2 lks. dist., mkd. X-BT.

A cedar, 38 ins. diam., bears S 30° E, 28 lks. dist., mkd. X-BT.

Continue over rolling land along gentle westerly slope.

200.00 Point for cor. No. 2, identical with cor. No. 2, Lot 1, and cor. No. 2, Lot 3.

Set a regulation brass capped iron post, 28 ins. long, 2 1/2 ins. diam., 24 ins. in the ground, with brass cap mkd.

S 3709

C 2

NFB

L 1

L 3

1959

from which

A cedar, 14 ins. diam., bears S 15° W, 2 1/2 lks. dist., mkd. S 3709 C 2 Lot 3 BT.

A hemlock, 12 ins. diam., bears S 62° E, 51 lks. dist., mkd. X-BT.

U.S. SURVEY NO. 3709

Chains

EAST

On line 2-3, identical with line 2-3, Lot 3, and Tongass National Forest boundary.

Gradual ascent over rolling westerly slope, through spruce, hemlock and cedar timber, alder and berry bush undergrowth.

27.80 Westerly rim of rocky ravine, descend 125 ft. over abrupt easterly slope.

30.00 Center of small stream, 40 lks. wide, 12 ins. deep, course S 30° W.

30.80 Begin ascent of 150 ft. over steep westerly slope.

34.30 Easterly rim of ravine.

from which

Rainbow Falls, bears N 10° W, 6.00 chs. dist.

40.00 Establish witness point No. 6.

Set a regulation brass capped, copper coated iron post, 30 ins. long, 3/4 ins. diam., 20 ins. in the ground, with brass cap mkd.

S 3709

WP

+

NO 6

1959

from which

A hemlock, 14 ins. diam., bears N 55° E, 8 lks. dist., mkd. X-BT.

A hemlock, 6 ins. diam., bears S 50° W, 10 lks. dist., mkd. X-BT.

Continue over nearly level land.

43.00 Leave timber, westerly edge of small meadow.

46.00 Easterly edge of meadow, enter timber.

51.50 Point for cor. No. 3, identical with cor. No. 3, Lot 3.

Set a regulation brass capped iron post, 28 ins. long, 2 1/2 ins. diam., 24 ins. in the ground and in a mound of stone to top of monument, with brass cap mkd.

NFB

S 3709

C 3

L 3

1959

from which

113

U.S. SURVEY NO. 3709

Chains

A hemlock, 6 ins. diam., bears S 32° W, 38 lks. dist., mkd.
X-BT.

A hemlock, 10 ins. diam., bears S 22° E, 10 1/2 lks. dist.,
mkd. X-BT.

Witness cor. No. 4, U.S. Survey No. 3403, which is monumented
with a regulation brass capped iron post, 2 1/2 ins. diam., set,
mkd. and witnessed as described in the official record; bears
S 54°33' W, 13.142 chs. dist.

SOUTH .

On line 3-4, identical with line 3-4, Lot 3, and Tongass National
Forest boundary.

Over level land.

0.00 Right rim of rocky gorge.

Descend 45 ft. over steep SE slope.

1.85 Center of stream, 30 lks. wide, 6 ins. deep, course S 65° W.

Thence ascend 45 ft. over steep NW slope.

3.35 Left rim of gorge.

Gradual descent over SW slope through spruce, hemlock and cedar
timber, alder and berry bush undergrowth.

17.40 Small stream, 3 lks. wide, course S 70° W.

40.00 Establish witness point No. 7.

Set a regulation brass capped, copper coated iron post, 30 ins. long,
3/4 ins. diam., 24 ins. in the ground, with brass cap mkd.

S 3709

WP

+

NO 7

1960

from which .

A hemlock, 16 ins. diam., bears N 8° E, 18 1/2 lks. dist., mkd.
X-BT.

A hemlock, 12 ins. diam., bears N 85° W, 23 1/2 lks. dist., mkd.
X-BT.

40.80 Right rim of rocky gorge, descend 60 ft. over S slope.

41.80 Small stream, 5 lks. wide, ascend 60 ft. over steep N slope.
Course of stream, S 70° W.

42.55 Left rim of gorge.

Continue over gentle westerly slope through spruce, hemlock and
cedar timber, alder and berry bush undergrowth.

U.S. SURVEY NO. 3709

Chains

51.70 Small creek, course S 70° W.

52.60 Creek, 40 lks. wide, 6 ins. deep course S 70° W.

62.00 Small stream, course S 65° W.

64.50 Small stream, course S 60° W.

68.00 Small stream, course S 65° W.

80.00 Establish witness point No. 8.

Set a regulation brass capped, copper coated iron post, 30 ins. long, 3/4 ins. diam., 24 ins. in the ground, with brass cap mkd.

S 3709

WP

+

NO 8.

1960

from which

A pine, 6 ins. diam., bears N 70° W, 52 lks. dist., mkd. X-BT.

A pine, 6 ins. diam., bears S 32° W, 87 lks. dist., mkd. X-BT.

83.00 Right rim of rocky gorge, descend 60 ft. over steep S slope.

85.00 Creek, 50 lks. wide, 6 ins. deep, course S 60° W.

Ascend 60 ft. over N slope.

87.00 Left rim of gorge, thence over level land.

92.00 Point for cor. No. 4, identical with cor. No. 4, Lot 3.

Set a regulation brass capped iron post, 28 ins. long, 2 1/2 ins. diam., 24 ins. in the ground and in a mound of stone to top of monument, with brass cap mkd.

S 3709

C 4

L 3

NFB

1960

from which

A pine, 6 ins. diam., bears N 71° W, 44 1/2 lks. dist., mkd. X-BT.

A pine, 6 ins. diam., bears S 42° W, 32 1/2 lks. dist., mkd. X-BT.

S 11°00' W.

On line 4-5, identical with line 4-5, Lot 3, and Tongass National Forest boundary.

Gradual descent over westerly slope, through spruce, hemlock and

U.S. SURVEY NO. 3709

Chains

- cedar timber, alder and berry bush undergrowth.
- 10.30 Right rim of swale, descend 20 ft.
- 17.30 Small stream, course S 70° W, ascend 20 ft.
- 19.20 Left rim of swale; continue gradual descent.
- 34.10 Right rim of rocky gorge, descend 70 ft. over southerly slope.
- 35.05 Creek, 20 lks. wide, 6 ins. deep, course S 70° W, ascend 70 ft. over northerly slope.
- 37.05 Left rim of gorge, begin gradual ascent over westerly slope.
- 40.00 Establish witness point No. 5.

Set a regulation brass capped, copper coated iron post, 30 ins. long, 5/4 ins. diam., 24 ins. in the ground and in a mound of stone, with brass cap mkd.

S 3709

WP

+

NO 9

1900

from which

A hemlock, 3 ins. diam., bears S 19° W, 38 lks. dist., mkd. X-BT.

A hemlock, 10 ins. diam., bears N 5° E, 41 1/2 lks. dist., mkd. X-BT.

- 42.40 Small stream, 4 lks. wide, course S 75° W.
- 49.10 Small stream, 0 lks. wide, course S 80° W.
- 72.00 Point for cor. No. 5, identical with cor. No. 5, Lot 3.

Set a regulation brass capped iron post, 28 ins. long, 2 1/2 ins. diam., 24 ins. in the ground and in a mound of stone to top of monument, with brass cap mkd.

S 3709

C 5

NFB

L 3

1900

from which

A hemlock, 24 ins. diam., bears N 40° E, 23 lks. dist., mkd. X-BT.

A hemlock, 16 ins. diam., bears S 20° E, 20 1/2 lks. dist. mkd. X-BT.

U.S. SURVEY NO. 3709

Chains

S 42°00' W.

On line 5-C, identical with line 5-C, Lot 3, and Tongass National Forest boundary.

Over rolling land, through spruce, hemlock and cedar timber.

8.40 Small stream, 3 lks. wide, course W.

12.70 Small stream, 3 lks. wide, course N, begin steep ascent over NW slope.

20.00 Continue steep ascent over northerly slope, bedrock outcrop in numerous places.

40.00 Establish witness point No. 10.

Set a regulation brass capped, copper coated iron post, 30 ins. long, 3/4 ins. diam., 2 1/2 ins. in the ground, with brass cap mkd.

S 3709
WP
+
NO 10

1960

from which

A hemlock, 6 ins. diam., bears N 20° E, 5 lks. dist., mkd.
X-B1.

A spruce, 5 ins. diam., bears N 65° E, 3 lks. dist., mkd.
X-BT.

58.00 Top of steep ascent, thence level over steep NW slope.

60.40 Small stream, 6 lks. wide, course N 45° W.

69.00 Begin descent over NW slope.

75.00 Slope changes from NW to westerly.

80.00 Establish witness point No. 11.

Set a regulation brass capped, copper coated iron post, 30 ins. long, 3/4 ins. diam., 20 ins. in the ground, with brass cap mkd.

S 3709
WP
+
NO 11

1960

from which

A hemlock, 10 ins. diam., bears S 20° W, 19 lks. dist., mkd.
X-BT.

A hemlock, 20 ins. diam., bears N 78° E, 31 lks. dist., mkd.
X-BT.

Thence steep descent over westerly slope.

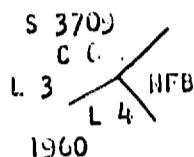
117

U.S. SURVEY NO. 3709

Chains

103.00 Point for cor. No. 6, identical with cor. No. 6, Lot 3, and cor. No. 1, Lot 4.

Set a regulation brass capped iron post, 28 ins. long, 2 1/2 ins. diam., 10 ins. in the ground to bedrock and in a mound of stone to top of monument, with brass cap mkd.



from which

A hemlock, 12 ins. diam., bears N 8° E, 10 1/2 lks. dist., mkd. X-BT.

A hemlock, 20 ins. diam., bears N 30° W, 29 1/2 lks. dist., mkd. X-BT.

M.C. bet. Lots 3 and 4, bears S 70° 13' W, 19.40 chs. dist.

S 30° 00' E.

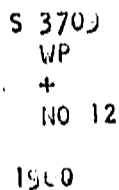
On line L-7, identical with line 1-2, Lot 4, line 1-2, Lot 5, and Tongass National Forest Boundary.

Begin steep ascent over westerly slope, through spruce, hemlock and cedar timber, alder and berry bush undergrowth.

14.30 Slope changes from westerly to SW, rock outcrop and slide rock in numerous places.

40.00 Establish witness point No. 12.

Set a regulation brass capped, copper coated iron post, 30 ins. long 3/4 ins. diam., 10 ins. in the ground to bedrock and in a mound of stone to top of monument, with brass cap mkd.



from which

A hemlock, 12 ins. diam., bears S 78° W, 24 lks. dist., mkd. X-BT.

A cedar, 24 ins. diam., bears N 0° E, 0 lks. dist., mkd. X-BT.

Continue steep ascent over SW slope.

61.00 Top of rise, edge bears N 60° W, and S 70° E.

Begin steep descent over southerly slope.

80.00 Establish witness point No. 13.

U.S. SURVEY NO. 3709

Chains

Set a regulation brass capped, copper coated iron post, 30 ins. long, 3/4 ins. diam., 20 ins. in the ground, with brass cap mkd.

S 3709
WP
+
NO 13

1960

from which

A cedar, 14 ins. diam., bears S 18° W, 9 lks. dist., mkd. X-BT.

A hemlock, 14 ins. diam., bears WEST, 22 lks. dist., mkd. X-BT.

118.50 Base of steep southerly slope, thence over gentle slope.

120.00 Establish witness point No. 14.

Set a regulation brass capped, copper coated iron post, 30 ins. long, 3/4 ins. diam., 24 ins. in the ground, with brass cap mkd.

S 3709
WP
+
NO 14

1960

from which

A cedar, 18 ins. diam., bears S 3° W, 26 lks. dist., mkd. X-BT.

A cedar, 6 ins. diam., bears S 75° E, 10 lks. dist., mkd. X-BT.

Continue over gentle southerly slope, through spruce, hemlock and cedar timber.

128.00 Small stream, 6 lks. wide, course S 52° E.

130.255 Point for cor. bet. Lots 4 and 5.

Set a regulation brass capped iron post, 28 ins. long, 2 1/2 ins. diam., 20 ins. in the ground and in a mound of stone to top of monument, with brass cap mkd.

S 3709

L 4 NFB

 L 5

1960

from which

A hemlock, 20 ins. diam., bears N 38° E, 21 lks. dist., mkd. X-BT.

A cedar, 14 ins. diam., bears S 26° E, 39 lks. dist., mkd. X-BT.

119

S. S. SHELLEY CO. 3709

Chains

header cor. bet. lots 4 and 5, bears S 29° 00' W, 72.07 chs. dist.,

125.50 left rim of dry draw, descend 20 ft. over southerly slope.

142.00 bottom of draw; angle point on creek, 10 fms. wide, bears E 50 fms. dist., creek flows from NE and courses SE, ascend 20 ft. over northerly slope.

143.70 right rim of dry draw, edge bears NW and SE.

143.00 slope changes from southerly to SW.

151.00 end of descent, thence continue on level land over gentle westerly slope.

160.50 center of creek to Pats Lake, 40 fms. wide, 4 ins. deep, course S 24° W.

170.00 point for cor. No. 7, identical with cor. No. 2, Lot 5; not monumented, as it falls in marshy meadow.

S 29° 00' W.

On line 7-8, identical with line 2-3, Lot 5, and Longass National Forest boundary.

1.00 Establish witness cor. No. 7, identical with witness cor. No. 2, Lot 5.

Set a regulation brass capped iron post, 26 ins. long, 2 1/2 ins. diam., 20 ins. in the ground, with brass cap mkd.

WC
S 37° 00' W
C 7
L 5
1960

from which

A pine, 10 ins. diam., bears S 75° W, 27 fms. dist., mkd. X-BT.

A cedar, 10 ins. diam., bears N 42° W, 34 fms. dist., mkd. X-BT..

Point "A", situated on northerly shore of Pats Lake, bears N 77° 57' W, 18.67 chs. dist.

Thence across rolling land over gentle NW slope, through spruce, hemlock, pine and cedar timber, alder and berry bush undergrowth.

40.00 Establish witness point No. 15.

Set a regulation brass capped, copper coated iron post, 30 ins. long, 5/4 ins. diam., 24 ins. in the ground and in a mound of stone, with brass tablet mkd.

U.S. SURVEY NO. 3709

Chain

S 3709
WP
+
NO 15

1960.

from which

A cedar, 10 ins. diam., bears S 75° E, 30 lks. dist., mkd.
X-BT.

A cedar, 12 ins. diam., bears N 10° E, 14 1/2 lks. dist., mkd.
X-PT.

Point "B", situated at the outlet of Pats Lake, bears N 22°33' W,
16.24 chs. dist.

40.20 Small stream, 3 lks. wide, course WEST.

48.60 Small stream, 4 lks. wide, course WEST.

61.00 Point for cor. No. 8, identical with cor. No. 3, Lot 5.

Set a regulation brass capped iron post, 28 ins. long, 2 1/2 ins.
diam., 26 ins. in the ground and in a mound of stone to top of
monument, with brass cap mkd.

S 3709
C 8
L 5 / NFB
1960

from which

A hemlock, 10 ins. diam., bears S 30° E, 40 lks. dist., mkd.
X-BT.

A hemlock, 24 ins. diam., bears N 30° E, 72 lks. dist., mkd.
X-BT.

WEST .

On line 3-9, identical with line 3-4, Lot 5, and Tongass National
Forest boundary.

Over level land, through spruce, hemlock and cedar timber.

4.50 Establish witness meander cor. No. 9, identical with witness meander
cor. No. 4, Lot 5.

Set a regulation brass capped, iron post, 28 ins. long, 2 1/2 ins.
diam., 18 ins. in the ground to bedrock and in a mound of stone to
top of monument, with brass cap mkd.

MC | WC
S 3709
C 9
L 5
NFB
1960

Chains

from which

A spruce, 10 ins. diam., bears N 8° E, 45 lks. dist., mkd.
X-BT.

A spruce, 24 ins. diam., bears N 75° E, 27 1/2 lks. dist. mkd.
X-BT.

End of Wrangell Highway as now constructed, bears N 3°17' E, 9.90
chs. dist.

Witness auxiliary meander cor. No. 1, Lot 6, located on Boat Island,
hereinafter described, bears N (9°09'04" W, (5.394 chs. dist.

U.S. Coast and Geodetic Survey Station "BOAT", located on Boat
Island, hereinafter described, bears N (4°38'25" W, 74.075 chs. dist.

5.00 Point for meander cor. No. 9, identical with meander cor. No. 4,
Lot 5, not monumented.

Thence with meanders along the easterly shore of Zimovia Strait.

N 10°55' W, 2.49 chs.

N 0°49' W, 1.59 chs.

N 60°44' E, 3.25 chs. At 1.13 chs., left bank of creek.

At 2.00 chs., right bank of creek.

At 3.25 chs., end of course.

N 61°26' W, 3.69 chs.

N 46°24' W, 3.59 chs.

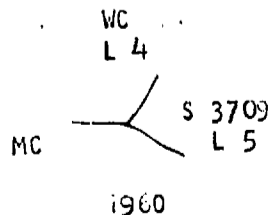
N 39°55' W, 4.56 chs.

N 45°00' W, 8.70 chs.

N 55°38' W, 9.29 chs. At end of course, point for meander cor.
No. 5, Lot 5, identical with meander cor.
No. 3, Lot 4.

At a point N 29°00' E, 0.20 chs. dist.,
on line bet. Lots 4 and 5, on suitable
ground for witness meander cor. No. 3, Lot
4, identical with witness meander cor. No.
5, Lot 5.

Set a regulation brass capped iron post,
23 ins. long, 2 1/2 ins. diam., 20 ins. in
the ground to bedrock and in a mound of
stone to top of monument, with brass cap
mkd.



from which

U.S. SURVEY NO. 3709

Chains

A spruce, 50 ins. diam., bears N 55° W, 53 1/2 lks. dist., mkd. X-BT.

A hemlock, 8 ins. diam., bears N 15° E, 30 lks. dist., mkd. X-BT.

S 85°00' W, 6.40 chs.

N 81°00' W, 9.30 chs.

N 49°00' W, 6.50 chs.

N 68°00' W, 5.00 chs.

N 20°00' E, 5.00 chs.

N 10°00' W, 7.60 chs.

N 18°00' W, 4.40 chs.

N 9°59' E, 13.87 chs.

N 18°00' E, 8.00 chs.

N 29°00' E, 8.00 chs.

N 15°00' W, 9.80 chs.

N 30°00' W, 12.20 chs.

N 20°00' E, 3.30 chs.

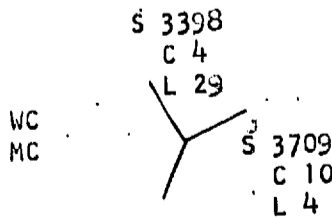
At end of course, point for meander cor. No. 10, identical with meander cor. No. 4, Lot 4, and meander cor. No. 4, U.S. Survey No. 3398, not monumented.

N 69°00' E.

On line 10-11, identical with line 4-5, Lot 4, and line 4-3, U.S. Survey No. 3398.

Ascend 5 ft. over rocky beach.

0.62 Witness meander cor. No. 10, identical with witness meander cor. No. 4, Lot 4, and witness meander cor. No. 4, U.S. Survey No. 3398, which is monumented with a regulation brass capped iron post, 1 ins. diam., 3 ins. above ground, set, mkd. and witnessed as described in the official record. Add mks. to brass cap to now read:



1955

Thence steep ascent over SW slope, through spruce and hemlock timber.

123

U.S. SURVEY NO. 3709

Chain

4.265

Reference monument, pertaining to U.S. Survey No. 3398, which is monumented with a regulation brass capped iron post, 1 ins. diam., 6 ins. above ground, set, mkd. and witnessed as described in the official record. 1 add mks. to brass cap to now read:

RM
S 3398
L 29

S 3709
L 4

1955

5.023 Center line of Wrangell Highway, bears S 20°16' E and N 20°16' W.

5.781 Reference monument, pertaining to U.S. Survey No. 3398, which is monumented with a regulation brass capped iron post, 1 ins. diam., 6 ins. above ground, set, mkd. and witnessed as described in the official record. 1 add mks. to brass cap to now read:

RM
S 3398
L 30

S 3709
L 4

1955

Gradual ascent over SW slope, through spruce, hemlock and cedar timber.

8.900 Point for cor. No. 11, identical with cor. No. 5, Lot 4, and cor. No. 3, U.S. Survey No. 3398, which is monumented with a regulation brass capped iron post, 1 ins. diam., 3 ins. above ground, set, mkd. and witnessed as described in the official record. 1 add mks. to brass cap to now read:

S 3398
C 3
L 30

S 3709
C 11

L 4

1955

Thence northerly along the record lines of U.S. Surveys Nos. 3398, 2908 and 2907, which are identical with lines of U.S. Survey No. 3709 and lines of Lot 4. Through Cors. 12 to 15 inclusive, of U.S. Survey No. 3709, as shown on the plat.

Cor. No. 2, U.S. Survey No. 2907, identical with cor. No. 10, U.S. Survey No. 3709, and cor. No. 10, Lot 4, which is monumented with a regulation brass capped iron post, 2 1/2 ins. diam., 6 ins. above ground, set, mkd. and witnessed as described in the official record. 1 add mks. to brass cap to now read:

S 3709
C 16

S 2907
C 2
L 1

L 4

1953

U.S. SURVEY NO. 3709

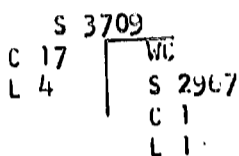
Chain

WEST

On line 16-17, identical with line 10-11, Lot 4, and line 2-1, U.S. Survey No. 2967.

Gradual descent over SW slope.

5.89 Witness cor. No. 17, identical with witness cor. No. 11, Lot 4, and witness cor. No. 1, U.S. Survey No. 2967, which is monumented with a regulation brass capped iron post, 2 1/2 ins. diam., 4 ins. above ground, set, mkd. and witnessed as described in the official record. 1 add mks. to brass cap to now read.



1953

6.65 Point for cor. No. 17, identical with cor. No. 11, Lot 4, and cor. No. 1, U.S. Survey No. 2967, not monumented.

Thence along a portion of the record westerly line of U.S. Survey No. 2967, and the record northerly line of U.S. Survey No. 2969, which are identical with lines of U.S. Survey No. 3709, and lines of Lot 4, through cor. 18 of U.S. Survey No. 3709, as shown on the plat.

Point for meander cor. No. 4, U.S. Survey No. 2969, identical with meander cor. No. 19 and meander cor. No. 13, Lot 4. Not monumented.

Thence with meanders over rocky beach along the easterly shore of Zimovia Strait.

N 19°45' W, 7.00 chs.

N 10°45' W, 6.20 chs.

NORTH 10.60 chs.

N 15°16' E, 16.06 chs.

At end of course, point for meander cor. No. 14, Lot 4, identical with meander cor. No. 7, Lot 3. Not monumented.

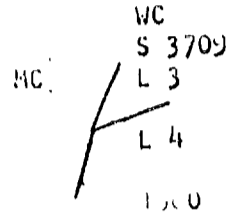
At a point N 70°13' E, 10.20 chs. dist., on line bet. Lots 3 and 4. U.S. Coast and Geodetic Survey Station "OAR 2", which is monumented with a 3 inch brass tablet, cemented in a drilled hole in large sandstone boulder, mkd. and witnessed as described in the official record.

At a point N 70°13' E, 3.28 chs. dist., on line bet. Lots 3 and 4, on ground suitable for witness meander cor.

U.S. SURVEY NO. 3709

Chains

Set a regulation brass capped iron post, 28 ins. long, 2 1/2 ins. diam., 10 ins. in the ground to bedrock and in a mound of stone to top of monument, with brass cap mkd.



from which

A hemlock, 14 ins. diam., bears N 10° E, 17 1/2 lks. dist. mkd. X-BT.

A hemlock, 18 ins. diam., bears S 48° W, 21 lks. dist., mkd. X-BT.

- N 24°30' E, 7.70 chs.
- N 27°30' E, 4.70 chs.
- N 30°15' E, 14.70 chs.
- N 20°00' E, 10.50 chs.
- N 23°45' E, 5.20 chs.
- N 30°00' E, 5.20 chs.
- N 41°30' E, 4.70 chs.
- N 20°45' E, 5.10 chs.
- N 0°30' E, 5.29 chs.

At end of course, point for meander cor. No. 20 and meander cor. No. 8, Lot 3, identical with meander cor. No. 6, U.S. Survey No. 2922. Not monumented.

Thence along the record lines of U.S. Surveys Nos. 2922 and 2921, which are identical with lines of U.S. Survey No. 3709 and lines of Lot 3, through cors. Nos. 21, 22, 23, 24, 25, 26, 27, 28 and 29 to M.C. No. 30 of U.S. Survey No. 3709, as shown on the plat.

Begin at point for meander cor. No. 30 and meander cor. No. 18, Lot 3, identical with meander cor. No. 6, U.S. Survey No. 2921, on the easterly shore of Zimovia Strait. Impracticable to monument.

Thence with meanders over rocky beach along the easterly shore of Zimovia Strait.

U.S. SURVEY NO. 3709

Chain

S 2900
 C 6
 L 23
 C 4

S 3709
 C 37
 L 3

S 2589
 C 5
 L 1
 C 2

1942

from which

Cor. No. 4, U.S. Survey No. 3709, hereinbefore described,
 bears N 73°52'30" E, 10.50 chs. dist.

Thence continue along record lines of U.S. Surveys Nos. 2900 and 3403, which are identical with lines of U.S. Survey No. 3709 and lines of Lot 3, through cors. Nos. 38, 39, 40, and 41 to witness cor. No. 42, U.S. Survey No. 3709, as shown on the plat.

Witness cor. No. 4, U.S. Survey No. 3403, identical with witness cor. No. 42, U.S. Survey No. 3709 and witness cor. No. 30, Lot 3, is monumented with a regulation brass capped iron post, 2 1/2 ins. diam., extending 4 ins. above ground, set, mkd. and witnessed as described in the official record. I add mks. to brass cap to now read:

WC

S 3403
 C 4
 L 4

S 3709
 C 42
 L 3

1955

from which

Cor. No. 4, U.S. Survey No. 3403, identical with cor. No. 42, U.S. Survey No. 3709 and cor. No. 30, Lot 3, bears NORTH 0.83 chs. dist. Point falls on left bank of creek.

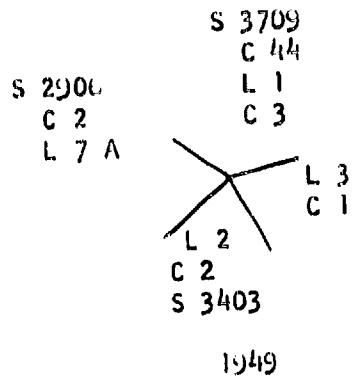
Most easter end of dam constructed of big timbers and extending 125 ft. NW, bears N 58° E, 7.40 chs. dist.

Thence continue along the lines of U.S. Survey No. 3403, identical with lines of U.S. Survey No. 3709 and lines of Lot 3, from cor. No. 42, through cor. No. 43 to cor. No. 44, U.S. Survey No. 3709, as shown on plat.

Cor. No. 2, U.S. Survey No. 3403, identical with cor. No. 2, U.S. Survey No. 2900 and cor. No. 44, U.S. Survey No. 3709 is monumented with a regulation brass capped iron post, 2 1/2 ins. diam., extending 8 ins. above ground, set, mkd. and witnessed as described in the official record. I add mks. to brass cap to now read:

U.S. SURVEY NO. 3709

Chains

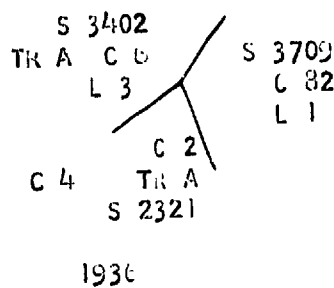


from which

Cor. No. 2, U.S. Survey No. 3709, hereinbefore described, bears $N 80^{\circ}46' E$, 11.75 chs. dist.

Thence northerly along the record lines of U.S. Surveys Nos. 2900, 2321, 2305, 3701 and 2904, which are identical with lines of U.S. Survey No. 3709 and lines of Lot 1, through cors. 45 to 82 inclusive of U.S. Survey No. 3709, as shown on the plat.

Cor. No. 2, U.S. Survey No. 2321, identical with cor. No. C, U.S. Survey No. 3402, Tract A, and cor. No. 32, U.S. Survey No. 3709, is monumented with a regulation brass capped iron post, extending 10 ins. above ground, set, mkd. and witnessed as described in the official record. I add mks. to brass cap to now read:



Thence northeasterly along the record line of U.S. Survey No. 3402, Tract A, which is identical with line 82-1, U.S. Survey No. 3709 and line 41-1, Lot 1, to place of beginning, containing 1921.24 acres, excluding 26.60 acres, which is the area of Pats Lake.

U.S. SURVEY NO. 3709

Chains

LOT 2

Lot 2 is isolated from the main body of the survey, bounded on the N by U.S. Survey No. 3402, on the E by U.S. Survey No. 2321, and on the W by the easterly shore of Zimovia Strait.

Line 2-3, Lot 2, identical with the easterly side line of road right-of-way, approximately 50 lks. E of center line of Wrangell Highway, and the westerly lines of a portion of the tracts contained in U.S. Survey No. 2321, have been permanently monumented in places by the Bureau of Public Roads, and all corner points bet. tracts of U.S. Survey No. 2321, have been monumented by the Bureau of Land Management. The official record of U.S. Survey No. 2321 states that the corners bet. tracts were monumented with regulation brass capped iron posts, 1 ins. diam.; however with the exception of cor. No. 2, Lot 2, identical with cor. No. 8, Tract A, U.S. Survey No. 3402, and the cor. bet. Tracts A and B, U.S. Survey No. 2321, the cor. points bet. the tracts of the latter survey are now monumented with regulation brass capped, copper coated iron posts 30 ins. long, 3/4 ins. diam., properly set and appropriately mkd.

All data regarding line 2-3, Lot 2, identical with a portion of line 1-47, U.S. Survey No. 2321, is referred to the official record of U.S. Survey No. 2321.

Begin at meander cor. No. 1, identical with meander cor. No. 9, Tract A, U.S. Survey No. 3402, not monumented.

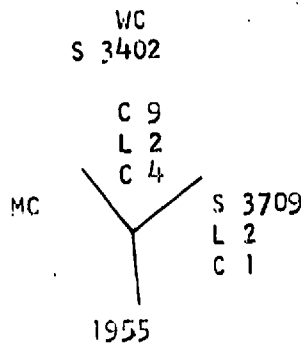
N 63°00' E

On line 1-2, identical with line 9-8, Tract A, U.S. Survey No. 3402.

Ascend 2 ft. over rocky beach.

0.20

Witness meander cor. No. 1, identical with witness meander cor. No. 9, Tract A, U.S. Survey No. 3402, which is monumented with a regulation brass capped iron post, 2 1/2 ins. diam., set, mkd. and witnessed as described in the official record of U.S. Survey No. 3402. I add mks. to brass cap to now read:



0.23

Intersect power line, bears S 19° E and N 19° W.

Ascend 6 ft. over westerly slope.

0.30

Top of rise, thence over level land.

0.73

Intersect center line of existing Wrangell Highway, bears N 22° 16' W and S 4° 15' E.

1.09

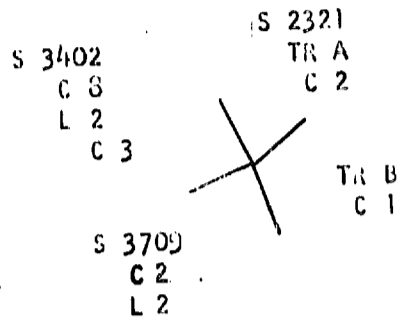
Cor. No. 2, identical with cor. No. 8, Tract A, U.S. Survey No. 3402, and cor. bet. Tracts A and B, U.S. Survey No. 2321, which is monumented with a regulation brass capped iron post, 1 ins. diam.,

130

U.S. SURVEY NO. 3709

Chains

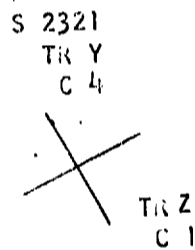
extending 10 ins. above ground, set, mkd. and witnessed as described in the official record of U.S. Survey No. 3402. 1 add mks. to brass cap to now read:



1936

Thence on line 2-3, hereinbefore described.

Cor. No. 3, identical with cor. bet. Tracts Y and Z, which is monumented with a regulation brass capped, copper coated iron post, 30 ins. long, 3/4 ins. diam., set in a concrete collar, extending 3 ins. above ground. No markings added. The brass cap now reads:



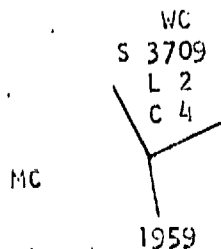
1936

S 52°41' W.

On line 3-4.

- 0.44 Intersect center line of existing Wrangell Highway, bears S 41° 17' E and N 41° 17' W.
- 1.04 sect power line, bears S 41° E and N 41° W.
- 1.70 crest, bears S 41° E and N 41° W, descend 30 ft. over westerly slope.
- 2.00 Base of slope, thence gradual descent over rocky beach.
- 2.20 Establish witness meander cor. No. 4.

Set an iron post, 28 ins. long, 2 1/2 ins. diam., 14 ins. in the ground to bedrock and in a mound of one to top of monument, with brass cap mkd.



1959

U.S. SURVEY NO. 3709

Chains	<p>from which</p> <p>A hemlock, 40 ins. diam., bears N 10° E, 77 lks. dist., mkd. X BT</p> <p>A hemlock, 44 ins. diam., bears S 68° E, 57 1/2 lks. dist. mkd. X BT.</p> <p>Continue over rocky beach.</p> <p>Point for meander cor. No. 4, not monumented.</p>
3.00	<p>Thence with meanders along the easterly shore of Zimovia Strait.</p> <p>N 36°34' W, 0.80 chs.</p> <p>N 54°05' W, 2.31 chs.</p> <p>N 43°49' W, 5.01 chs.</p> <p>N 36°20' W, 1.20 chs.</p> <p>N 16°28' W, 9.31 chs.</p> <p>N 33°09' W, 3.71 chs.</p> <p>N 27°28' W, 4.68 chs.</p> <p>N 30°20' W, 10.50 chs.</p> <p>N 20°10' W, 4.59 chs.</p> <p>N 11°30' W, 3.51 chs.</p> <p>N 27°08' W, 5.19 chs.</p> <p>N 30°50' W, 25.09 chs.</p> <p>N 35°29' W, 5.04 chs.</p> <p>N 29°00' W, 5.41 chs.</p> <p>At end of course, most southerly cor. of frame house, 42x13 ft., bears N 13° E, 50 lks., dist., longside extends N 19° 45' W.</p> <p>Cor. No. 2, TR L, identical with cor. No. 1, TR M, U.S. Survey No. 2321, bears N 44°55' E, 2.24 chs. dist.</p> <p>N 17°20' W, 4.83 chs.</p> <p>N 23°05' W, 10.07 chs.</p> <p>N 35°50' W, 5.05 chs.</p> <p>N 8°23' W, 5.10 chs.</p> <p>N 19°41' W, 5.00 chs.</p> <p>N 28°30' W, 5.23 chs.</p> <p>N 20°28' W, 4.95 chs.</p>

U.S. SURVEY NO. 3704

Chains

N 31°53' W, 9.82 chs.

N 7°11' W, 8.46 chs.

N 2°27' E, 4.00 chs.

N 1°04' W, 5.17 chs.

N 25°34' W, 0.93 chs.

N 10°08' E, 4.90 chs.

N 1°40' W, 7.04 chs.

At end of course, meander cor. No. 1,
place of beginning, containing 42.15 acres.

U.S. SURVEY NO. 3709

Chains

LOT C

Lot C embraces a small offshore island, located approximately 3/4 mile westerly from the southern limits of U.S. Survey No. 3709.

Begin at point for auxiliary meander cor. for Lot C, on the southerly tip of the island, unsafe place for monument.

Establish witness auxiliary meander cor., on SE slope, 25 ft. above mean high tide level, point bears N 43° W, 1.40 chs. dist.

Set a regulation brass capped iron post, 28 ins. long, 2 1/2 ins. diam., 24 ins. in the ground to bedrock and in a mound of stone to top of monument, with brass cap mkd

WC
AHC
S 3709
L C
1960

from which

A spruce, 8 ins. diam., bears N 45° W, 27 lks. dist., mkd. X-BT.

A hemlock, 10 ins. diam., bears N 0° E, 1 1/2 lks. dist. mkd. X-BT.

Witness meander cor. No. 9, U.S. Survey No. 3709, hereinbefore described, bears S 69°10'04" E, 15.394 chs. dist.

Thence with meanders of Lot C.

- N 75°30' W, 1.80 chs.
- N 47°00' W, 5.30 chs.
- N 4°30' W, 2.80 chs.
- N 35°00' W, 1.70 chs.
- N 18°00' W, 1.30 chs.

At end of course, U.S. Coast and Geodetic Survey Station "BOAT", monumented with a regulation 3 1/2 inch brass tablet, set, mkd. and witnessed as described in the official record, bears EAST 20 lks. dist.

from which

Witness meander cor. No. 9, U.S. Survey No. 3709, hereinbefore described, bears S 64°39'30" E, 74.079 chs. dist.

- N 10°00' E, 2.00 chs.
- N 19°00' E, 2.00 chs.
- N 25°00' E, 2.80 chs.
- S 20°00' E, 1.10 chs.

134

U. S. SURVEY NO. 3709

Chain

S 7°00' E, 2.20 chs.
S 15°00' E, 2.00 chs.
S 20°00' W, 1.80 chs.
S 50°00' E, 1.50 chs.
S 12°30' W, 2.20 chs.
S 27°27' E, 4.40 chs.
S 30°00' E, 1.80 chs.
S 10°00' E, 1.80 chs.

At end of course, the auxiliary
meander cor., and point of be-
ginning, containing 4.73 acres.

U.S. SURVEY NO. 3709

Chains

Pats Lake is contained within Lot 5, U.S. Survey No. 3709.

Begin at point "A", hereinbefore described: thence with meanders along the shore line.

S 82°00' W, 3.80 chs.
 S 40°00' W, 2.00 chs.
 N 83°00' W, 2.50 chs.
 N 11°00' E, 4.00 chs.
 S 43°00' W, 5.40 chs.
 S 33°00' W, 5.00 chs.
 S 40°00' E, 1.80 chs.
 N 59°00' W, 4.00 chs.
 S 55°00' E, 1.00 chs.
 S 56°36' W, 5.90 chs.
 S 12°16' E, 7.63 chs.
 S 65°00' E, 4.40 chs.
 S 27°00' E, 4.00 chs.
 S 45°00' E, 2.00 chs.

At end of course, point "B", hereinbefore described.

from which

Most northerly cor. of frame shelter cabin, 20x16 ft., bears N 61° W, 170 lks. dist., long side of cabin extends S 45° E.

N 61°04' E, 4.50 chs.
 N 31°30' E, 4.00 chs.
 N 44°00' W, 2.80 chs.
 S 70°00' W, 2.00 chs.
 N 40°00' E, 6.50 chs.
 N 89°00' E, 5.40 chs.
 N 25°00' W, 4.40 chs.
 N 11°00' E, 2.60 chs.
 N 46°00' E, 4.60 chs.
 S 59°00' W, 3.50 chs.
 N 43°00' W, 3.00 chs.
 N 78°00' W, 1.80 chs.

At end of course, creek enters lake.

At end of course, point "A", and point of beginning, containing 20.00 acres.

U.S. SURVEY NO. 3709

Chains

The following is a traverse of the approximate center line of the southern portion of the Wrangell Highway where it contacts U.S. Surveys Nos. 3402, 2321, 3403, 2900, 2589, 3000, 2921, 2922, 2967, 2968 and 3398. The line has a direct tie to U.S. L No. 2589.

Begin at a point where line 8-9, U.S. Survey No. 3402, Tract A, identical with line 1-2, Lot 2, U.S. Survey No. 3709, intersects the center line of Wrangell Highway. Cor. No. 2, Lot 2 bears N 63°06' E, 36 lks. dist.

Thence along the approximate center line.

S 6°50' E, 7.37 chs.

S 6°43' W, 5.76 chs.

At end of course, 4 x 4 inch post, extending 3 ft. above ground, mkd. BPR RPPI STA. 77+35.

S 1°01' W, 8.99 chs.

S 11°22' E, 8.30 chs.

S 31°10' E, 9.53 chs.

S 28°30' E, 10.23 chs.

At end of course, 4 x 4 inch post, extending 3 ft. above ground, mkd. ⁸ BPR RPPT STA. 101+48.

S 19°41' E, 29.84 chs.

At end of course, most easterly cor. of frame house, 42 x 13 ft. bears N 71°11' W, 74 lks. dist., longside extends N 19°41' W.

S 32°29' E, 5.24 chs.

At end of course, a regulation brass capped iron post, 1 ins. diam., extending 4 ins. above ground, bears N 57°57' E, 43 lks. dist. Brass cap mkd.

TR M
C 4 ROW
1936

A regulation brass capped, copper coated iron pipe, 3/4 ins. diam., extending 4 ins. above ground, bears S 48° E, 1.474 chs. dist. Brass cap mkd.

S 2321
ROW TR N
ROW
1936

S 32°40' E, 35.19 chs.

S 13°14' E, 4.16 chs.

At end of course, opposite 4 x 4 ins. wood post, extending 3 ft. above ground, mkd. BPR RP PT STA. 150+53.2 B = 150+53.5 A.

S 13°55' E, 4.57 chs.

S 33°36' E, 14.68 chs.

At end of course, opposite 4 x 4 ins. wood post, extending 3 ft. above ground, mkd. RP PC STA. 163+25.4.

U.S. SURVEY NO. 3709

Chains

S 33°09' E, 3.71 chs.

S 14°04' E, 10.31 chs.

At end of course, regulation brass cap, contained in concrete slab, level with ground. Brass cap mkd.

PI. STA 172+44.8

S 41°32' E, 12.24 chs.

S 41°17' E, 6.94 chs.

At end of course, regulation brass capped, copper coated iron post, 3/4 ins. diam., set in concrete collar, bears N 48°33' E, 0.435 chs. dist., brass cap mkd.

S 2321

TR Y



TR Z

1936

S 42°45' E, 4.28 chs.

S 54°20' E, 11.63 chs.

At end of course, a regulation brass capped iron post, 1 ins. diam., extending 18 ins. above ground, bears N 52°09' E, 61 1/2 lks. dist., brass cap mkd.

S 2321

C 47

TR 9

C 4

RM

S 3403

L 2

C 1

1936

S 48°30' E, 9.09 chs.

S 50°55' E, 26.52 chs.

S 38°09' E, 15.79 chs.

S 16°55' E, 24.05 chs.

S 15°36' E, 9.22 chs.

S 7°36' E, 24.99 chs.

At end of course, a regulation brass capped iron post, 1 ins. diam., extending 6 ins. above ground, bears S 65°43' W, 78 lks. dist., brass cap mkd.

S 2589

C 7

L 17

C 3

L 16

C 2

S 2900

C 1

1942

U.S. SURVEY NO. 3709

Chains

S 7°12' E, 10.34 chs.

S 8°06' E, 19.63 chs.

S 16°51' W, 11.11 chs.

S 42°27' W, 12.81 chs.

S 68°16' W, 11.58 chs.

At end of course, opposite wood post, 4 x 4 ins., extending 3 ft. above ground, mkd. POST STA. 315+03.7 BPR.

S 47°18' W, 7.84 chs.

S 87°38' W, 8.16 chs.

At end of course, U.S.L.M. No. 2589, which is monumented with a regulation brass tablet, contained in a concrete slab, located on the westerly shoulder of Wrangell Highway, brass tablet mkd.

U S L M
+
NO 2589

1942

S 58°40' W, 5.33 chs.

S 61°22' W, 4.83 chs.

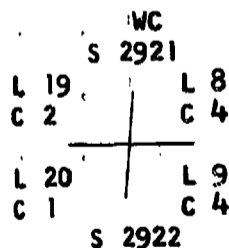
S 43°19' W, 7.36 chs.

S 24°03' W, 7.88 chs.

At end of course, sign mkd. M P 7, bears S 30 lks. dist.

S 4°06' W, 7.37 chs

At end of course, a regulation brass capped iron post, 2 1/2 ins. diam., extending 6 ins. above ground, bears W 45 lks. dist., brass cap mkd.



1953

S 3°20' W, 11.61 chs.

S 34°33' W, 9.91 chs.

S 30°04' W, 18.72 chs.

S 19°27' W, 6.42 chs.

S 29°09' W, 19.88 chs.

S 20°35' W, 7.55 chs.

At end of course, U.S. Coast and Geodetic Survey Triangulation Station "OAR 2", hereinbefore described bears N 58°11' W, 74 lks. dist.

U.S. SURVEY NO. 3709

Chains

S 11°37' W, 15.20 chs.

Sign, mkd. M P 8 bears S 4° W, 140 lks. dist.

At end of course, a regulation brass capped iron post, 2 1/2 ins. diam., extending 5 ins. above ground, bears N 63°38' E, 116 lks. dist., brass cap mkd.

WC
S 2967
C 1
L 1

1953

S 2°08' W, 4.33 chs.

S 10°03' E, 13.55 chs.

S 25°57' E, 11.10 chs.

S 37°58' E, 9.71 chs.

S 20°58' E, 26.74 chs.

S 29°41' E, 10.53 chs.

S 20°16' E, 11.00 chs.

S 49°28' E, 15.38 chs.

S 4°09' W, 5.46 chs.

S 8°24' W, 7.72 chs.

S 15°41' E, 8.92 chs.

S 3°40' E, 11.12 chs.

S 20°50' E, 8.44 chs.

S 30°39' E, 4.07 chs.

N 89°57' E, 7.36 chs.

S 36°13' E, 4.41 chs.

At end of course, point on line bet. Lots 4 and 5, U.S. Survey No. 3709.

S 7°24' E, 9.44 chs.

S 49°21' E, 11.70 chs.

S 10°15' W, 9.77 chs.

S 33°32' E, 2.88 chs.

S 55°00' E, 3.00 chs.

At end of course, southerly end of Wrangell Highway as constructed in 1960.

From this point a foot trail leads along the west side of Pats Creek to the shelter cabin, heretofore described, near the outlet of Pats Lake.

U.S. SURVEY NO. 3709

Chains

ADDITIONAL MEANDERS

From meander cor. No. 9, U.S. Survey No. 3709, identical with meander cor. No. 4, Lot 5, the easterly shore of Zimovia Strait, bears as follows.

SOUTH 5.00 chs.

S 35°00' W, 6.00 chs.

SOUTH 10.00 chs.

GENERAL DESCRIPTION

The land embraced in this survey lies on a steep westerly slope, except at the area approximately 3 miles southerly from point of beginning, and approximately 3 miles northerly from the southern limits of this survey, where the slopes are NW and SE. The soil is a forest mold covered by about 8 ins. of moss, with spruce, hemlock and cedar timber, alder and berry bush undergrowth.

