

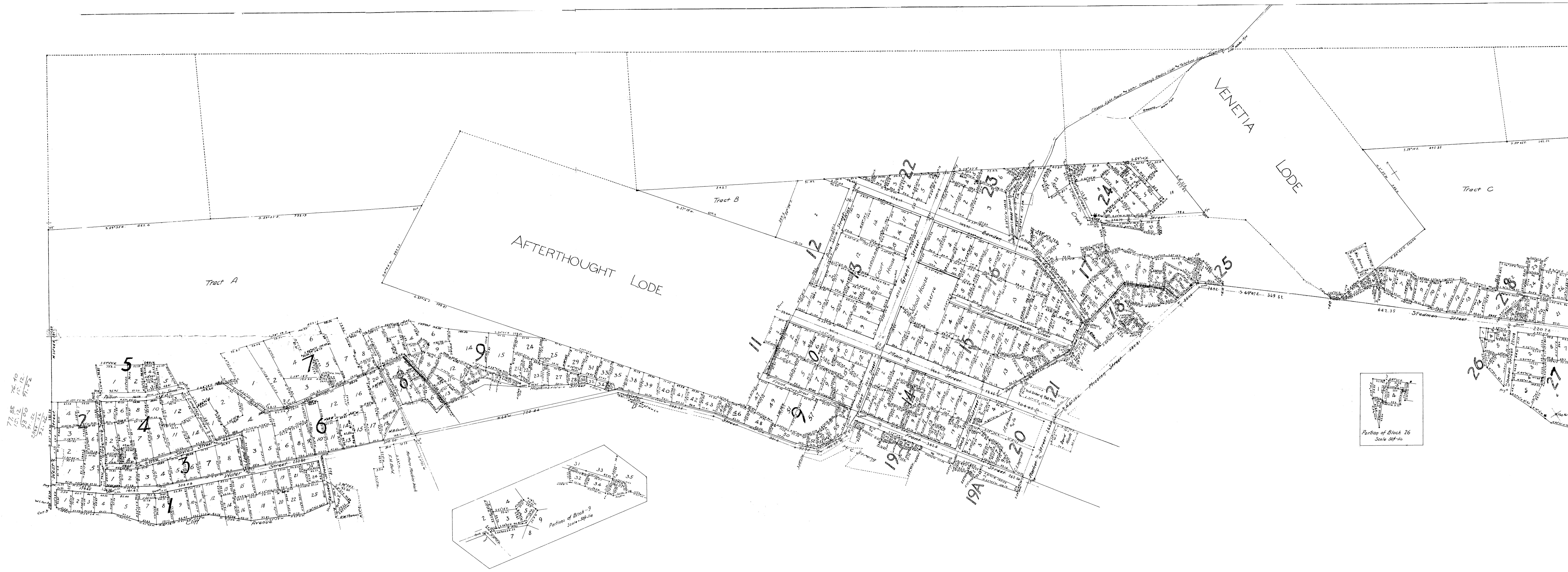
PLAT
OF THE
Subdivisional Survey
OF
KETCHIKAN TOWNSITE
U.S. Survey No. 437

Showing
Streets, Blocks, Lots & Tracts of Land, as claimed by, as
Surveyed under the Instructions & Supervision of
Chas. E. Ingersoll, Townsite Trustee.
Acting under Instruction from the Commissioner of the
General Land Office, Washington, D. C.

Situate on the Island of
REVILLAGIGEDO
JUNEAU LAND DISTRICT
DISTRICT OF ALASKA
Containing a net Area of 68.86 Acres

Surveyed & Platted by
John C. Barber, C.E. Sept 1910 - Jun^r 1911.
1911 Scale 100ft=1in.

I, the undersigned, Trustee of the Townsite of Ketchikan, District of Alaska, hereby certify that I have examined the survey of said Townsite and approved the foregoing plat thereof as strictly conformable to said survey and the field notes filed herewith, made in accordance with the Act of Congress, approved March 3rd 1891, and my official instructions.
I further certify that the Lots numbered in the several Blocks, and lengths and Courses of their boundary lines are thereon accurately represented; that the center line of every street and the corners of said Blocks have been marked by monuments where ever so represented on said plat; and that the areas occupied by the Streets, Alleys, & Parks shown hereon are hereby dedicated to the use of the public forever.
Chas. E. Ingersoll
Trustee of the Townsite of Ketchikan, Alaska



77.88
75.10
73.12
71.14
69.16
67.18
65.20
63.22
61.24
59.26
57.28
55.30
53.32
51.34
49.36
47.38
45.40
43.42
41.44
39.46
37.48
35.50
33.52
31.54
29.56
27.58
25.60
23.62
21.64
19.66
17.68
15.70
13.72
11.74
9.76
7.78
5.80
3.82
1.84

TONGASS

NARROWS

PLAN OF THE #100
STATISTICAL SURVEY OF RESIDENTS
TOWNSHIPS, U. S. SURVEY NO. 137
(Showing Streets, Blocks, Lots and
other features as shown on the
surveyed under the instructions
and Supervision of Chas. E.
Hershey, Townships Induced
John C. Barber, C.E., Sept. 1910-11)

Number 3

100

X

City Plat
#100

City Plat - 1911

100
I hereby certify that
this is a true and correct
copy of the original
as shown to me by
the person in whose
possession it is held
at the time of my
survey.
J. W. Barber, C.E.

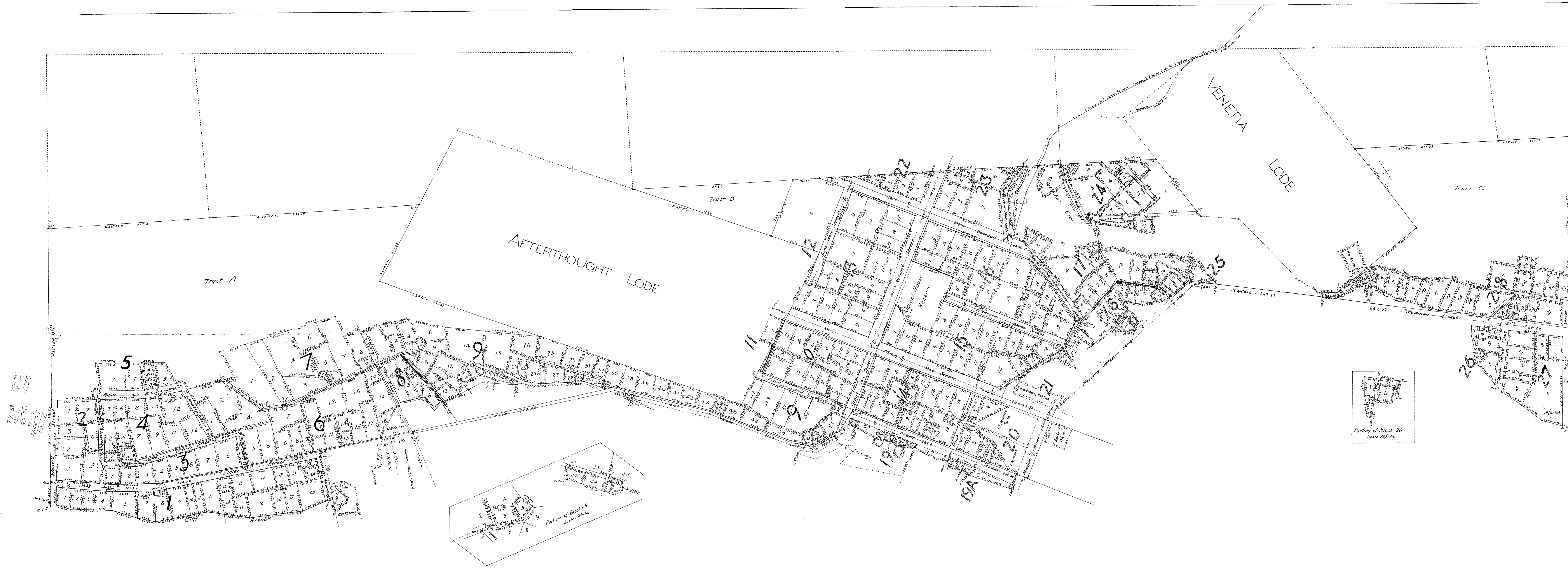
PLAT
OF THE
Subdivisional Survey
OF
KETCHIKAN TOWNSITE
U.S. Survey No. 437

Showing
Streets, Blocks, Lots & Tracts of Land, as claimed by, as
Surveyed under the Instructions & Supervision of
Chas. E. Ingersoll, Townsite Trustee.
Acting under Instruction from the Commissioner of the
General Land Office, Washington, D. C.

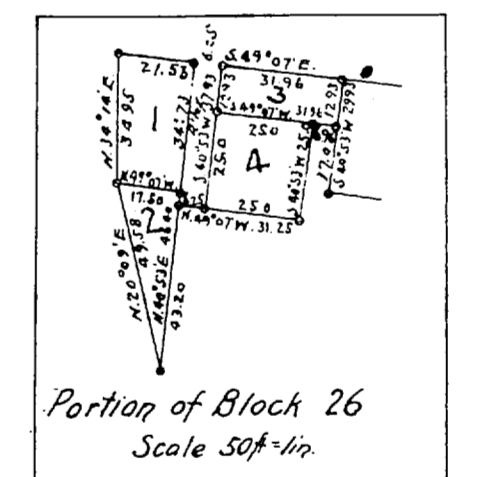
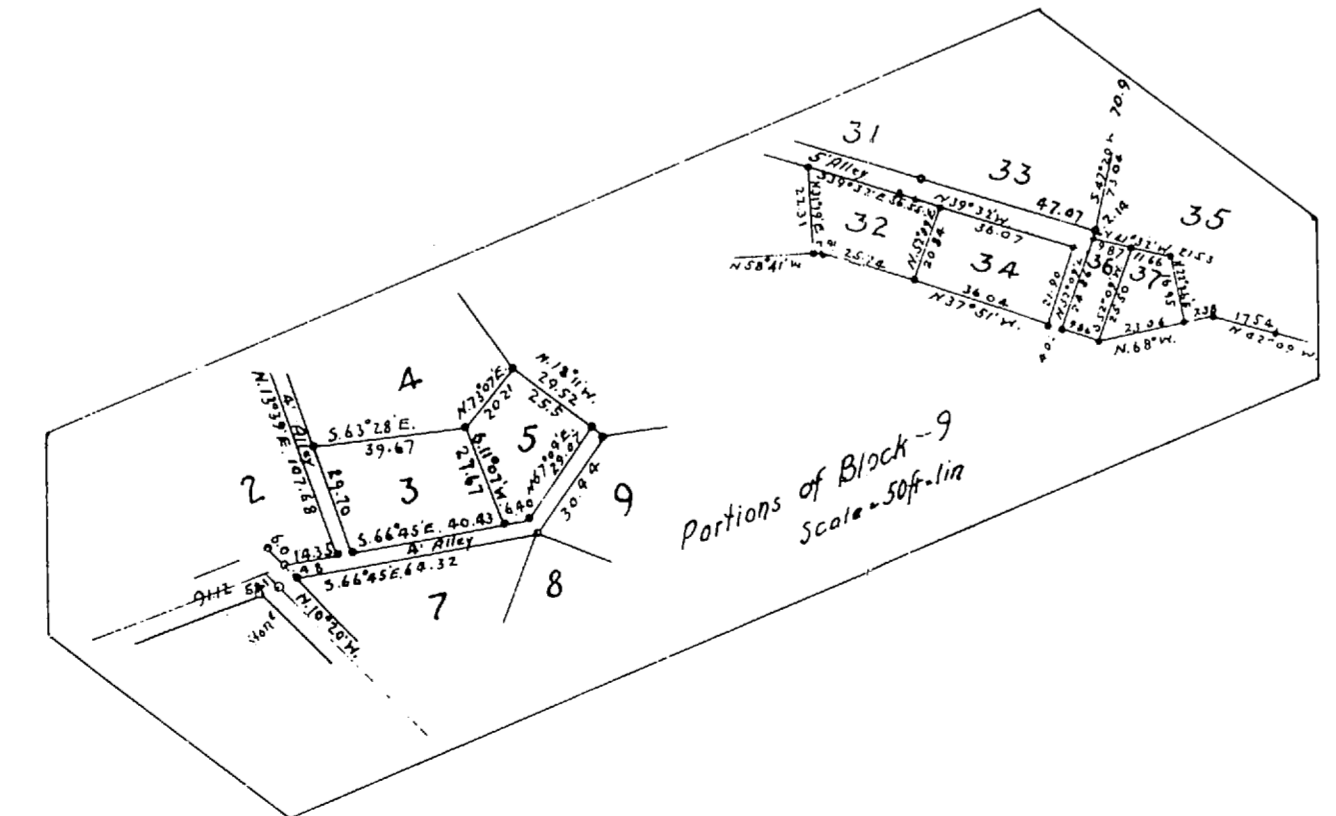
Situate on the Island of
REVILLAGIGEDO
JUNEAU LAND DISTRICT
DISTRICT OF ALASKA
Containing a net Area of 68.86 Acres

Surveyed & Platted by
John C. Barber, C.E. Sept 1910 - Jun^r 1911.
1911
Scale 100ft = 1in.

I, the undersigned, Trustee of the Townsite of Ketchikan, District of Alaska, hereby certify that I have examined the survey of said Townsite and approved the foregoing plat thereof as strictly conformable to said survey and the field notes filed herewith, made in accordance with the Act of Congress, approved March 3rd 1891, and my official instructions.
I further certify that the Lots numbered in the several Blocks, the lengths and Courses of their boundary lines are thereon accurately represented, that the center line of every street and the corners of said Blocks have been marked by monuments where ever so represented on said plat, and that the areas occupied by the Streets, Alleys, & Parks shown hereon are hereby dedicated to the use of the public forever.
Chas. E. Ingersoll
as trustee of the Townsite of Ketchikan, Alaska



77.88
75.10
73.00
71.52
70.00
68.52



TONGASS

NARROWS

PLAN OF THE #100
STATISTICAL SURVEY OF RESIDENTS
TOWNSHIPS, U. S. SURVEY NO. 137
(Showing Streets, Blocks, Lots and
other features as shown on the
surveyed under the instructions
and Supervision of Chas. E.
Hesslein, Toronto, Ontario
John C. Barber, C.E., Sept. 1910-11)

Page 3

100

X

~~City Plat~~
#100

City Plat - 1911

100
I hereby certify that
this is a true and correct
copy of the original
as shown to me by
the person in whose
possession it is held
at the time of my
survey.
J. C. Barber, C.E.