



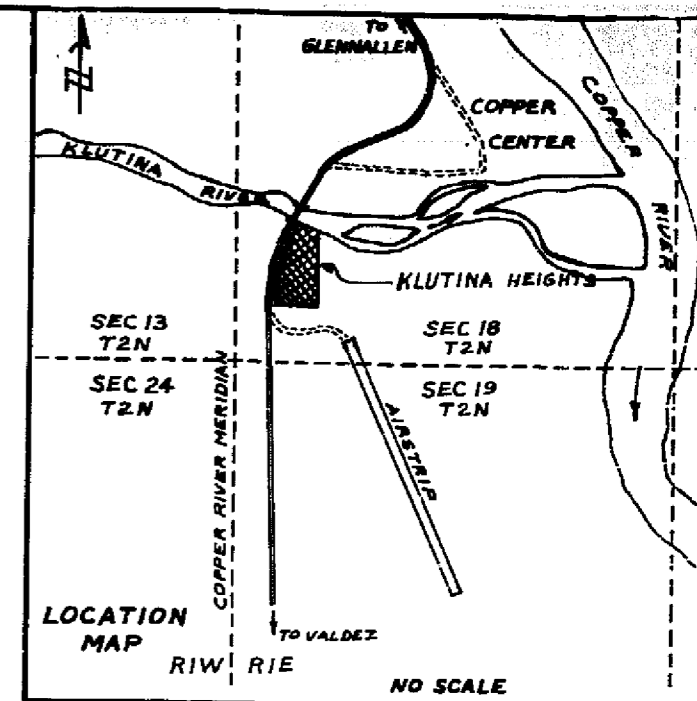
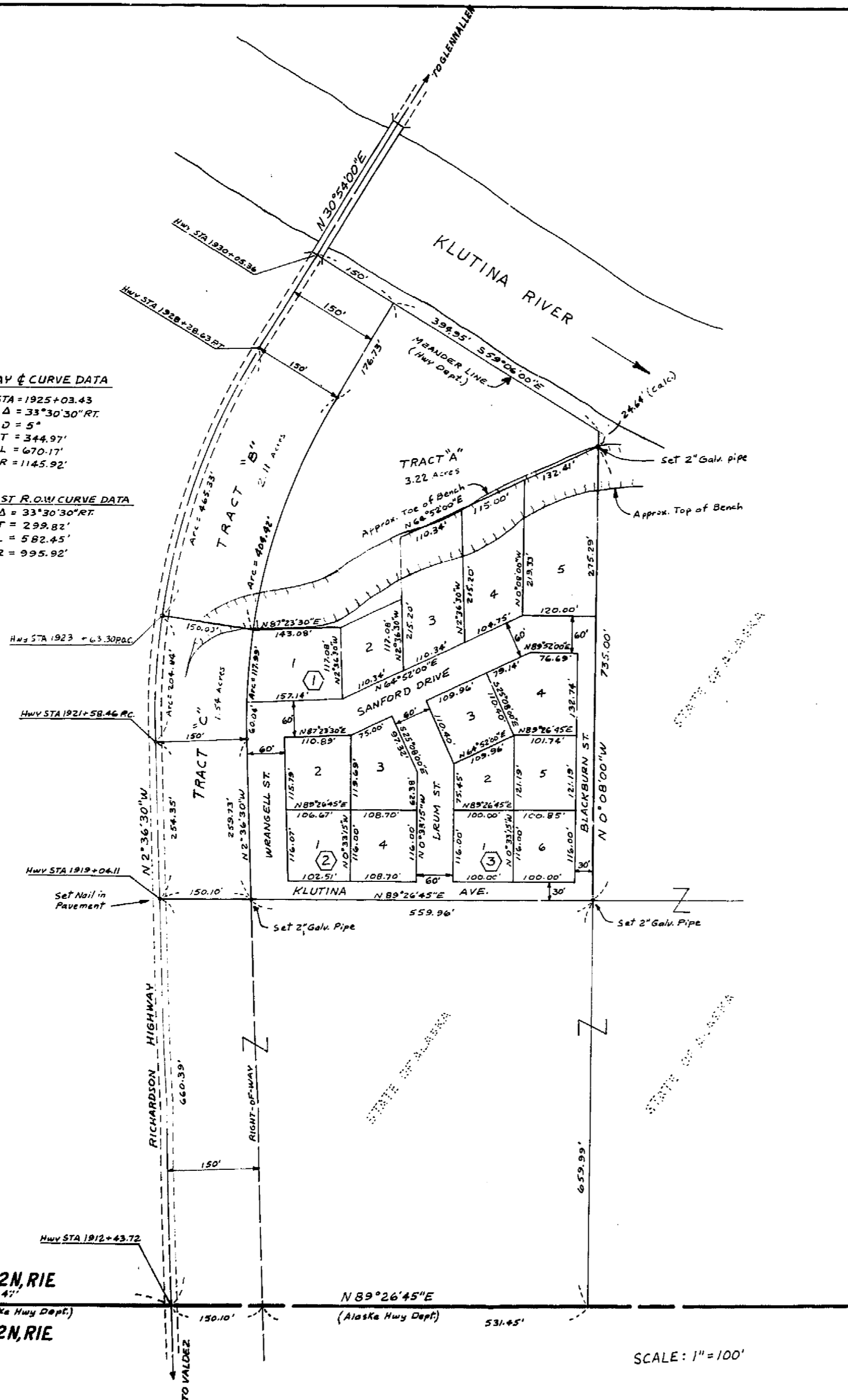
COPPER RIVER MERIDIAN

HIGHWAY & CURVE DATA

P.I. STA = 1925+03.43  
Δ = 33°30'30" RT  
D = 5°  
T = 344.97'  
L = 670.17'  
R = 1145.92'

HWY. EAST R.O.W. CURVE DATA

Δ = 33°30'30" RT  
T = 299.82'  
L = 582.45'  
R = 995.92'



OWNERSHIP AFFIDAVIT

We hereby certify that we are the owners of the property shown and described hereon and that we adopt this plan of subdivision and dedicate all streets, alleys, walks, parks, and other open spaces to public or private use as shown on this Plat.

Neil A. Huddleston, Sr.      Mary Huddleston  
R.O. Box B22                  R.O. Box B22  
Copper Center, Alaska      Copper Center, Alaska

NOTARY'S ACKNOWLEDGEMENT

Subscribed and sworn before me this 6th day of September, 1972  
Notary for Alaska      My Commission Expires

ENGINEER'S CERTIFICATE

I, the undersigned registered engineer, hereby certify that a land survey has been completed by me or under my direct supervision and that the corners and monuments shown hereon have been located and established and that dimensions shown hereon are true and correct.

6 September 1972

Robert D. Schilling  
Robert D. Schilling  
Civil Engineer

CLUTINA      BOOK 114      PAGE 3  
Serial No. 572      Chitina Recording District

RECORDED - FILED  
DATE AUG 11 1972  
FILED BY REC. DIST.  
INDEXED BY REC. DIST.  
COPPER CENTER, AK

NOTES:

- 1. Klutina Heights is a subdivision of Lots 24 & 25, which are set forth and shown on the Supplemental Plat of Sec 18, T2N, R1E, Copper River Meridian, by the U.S. Bureau of Land Management and dated 7 July 1955.
- 2. Bearings shown and highway stationing and ties thereto are based on data furnished by the Alaska Highway Dept., Valdez District.
- 3. This plat supercedes and takes precedence over any and all other previous plats of the above described property.
- 4. Tract "A", Blocks 1, 2, & 3, and dedicated streets as shown hereon, together contain 10.49 acres, more or less.
- 5. Tracts "B" and "C" together contain 3.65 acres, more or less and are subject to 150' right-of-way for the Richardson Highway, as shown hereon.

COPPER CENTER, ALASKA  
**KLUTINA HEIGHTS**  
REVISED PLAT  
DWG NO CC-2      SHEET 1 OF 1

SCALE: 1" = 100'