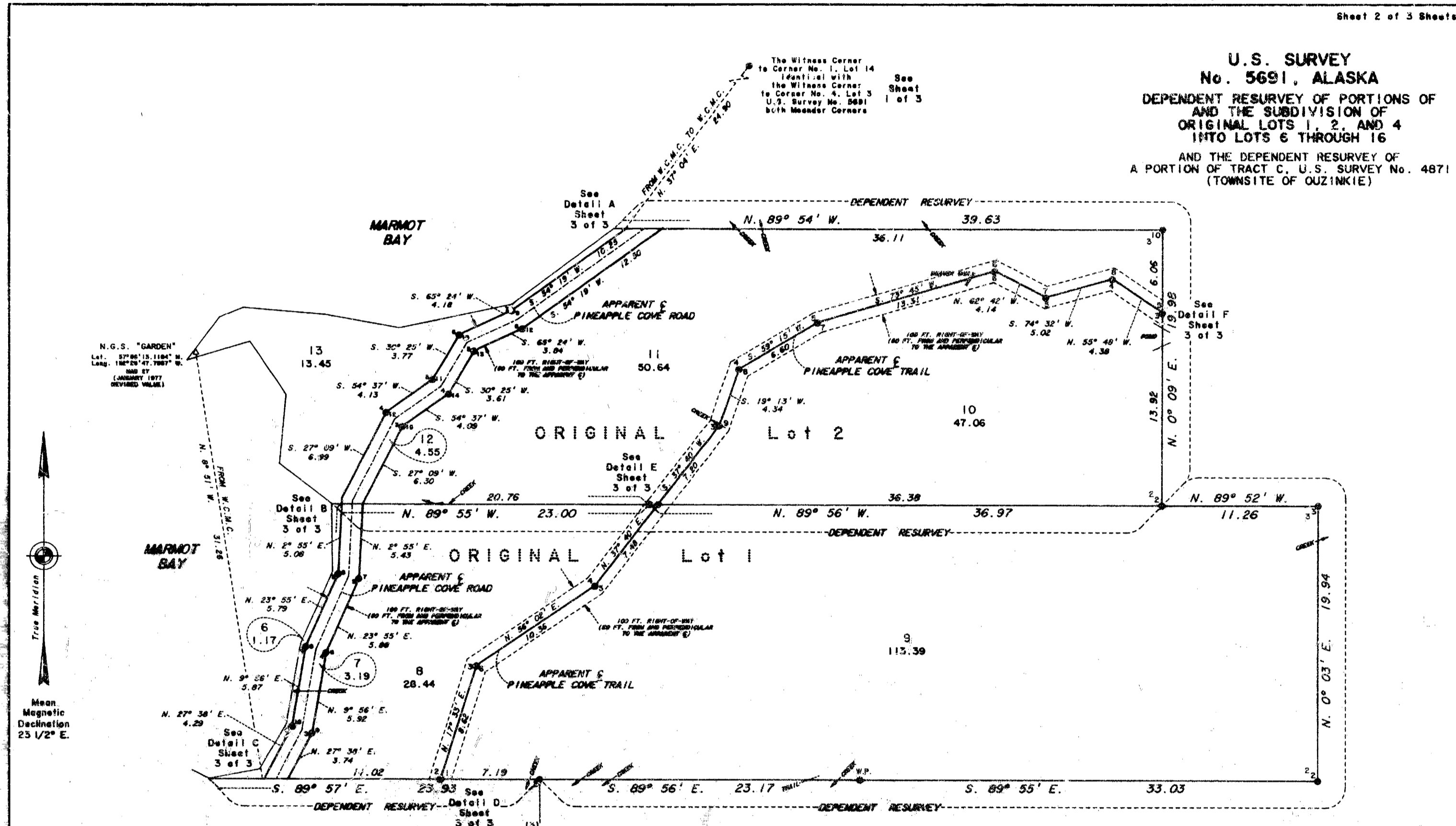
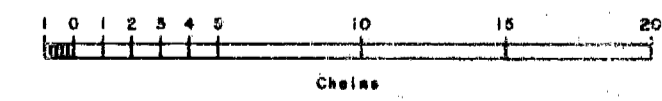


**U.S. SURVEY
No. 5691, ALASKA**
DEPENDENT RESURVEY OF PORTIONS OF
AND THE SUBDIVISION OF
ORIGINAL LOTS 1, 2, AND 4
INTO LOTS 6 THROUGH 16
AND THE DEPENDENT RESURVEY OF
A PORTION OF TRACT C, U.S. SURVEY No. 4871
(TOWNSITE OF OUZINKIE)



True Meridian
Mean Magnetic Declination 25 1/2° E.

U.S. SURVEY No. 4871
TRACT C
(TOWNSITE OF OUZINKIE)



REFERENCE SHOULD BE MADE TO SHEET 1
FOR SURVEY INFORMATION

UNITED STATES DEPARTMENT OF THE INTERIOR
BUREAU OF LAND MANAGEMENT
Anchorage, Alaska

This plot is strictly conformable to the approved field notes, and the survey, having been correctly executed in accordance with the requirements of law and the regulations of this Bureau, is hereby accepted.

For the Director

Must C. Pano June 10, 1994
(ACTING) Date
Deputy State Director for Cadastral Survey, Alaska

Part