

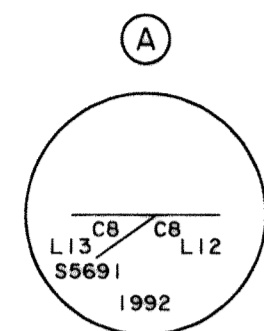
ALASKA NATIVE CLAIMS SETTLEMENT ACT (ANCSA) SECTION 14(c), TRACTS A - G RIGHTS-OF-WAY, AND CENTERLINE OF TRACT D, U.S. SURVEY No. 4871 OUZINKIE NATIVE CORPORATION AT OUZINKIE, ALASKA

AND THE DEPENDENT RESURVEY AND SUBDIVISION OF TRACT D, U.S. SURVEY No. 4871

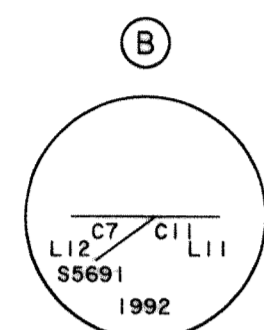
U.S. Survey No. 5691, comprising Lots 1 through 5, and the dependent resurvey of a portion of Tract C, U.S. Survey No. 4871 (Townsite of Ouzinkie), was surveyed by Edward T. Prendergast, Supervisory Cadastral Surveyor, in 1971.

The dependent resurvey of portions of and the subdivision of original Lots 1, 2, and 4 into Lots 6 through 16, U.S. Survey No. 5691, and the dependent resurvey of a portion of Tract C, U.S. Survey No. 4871 (Townsite of Ouzinkie), was surveyed by Christopher D. Wiita, Cadastral Surveyor, in 1992.

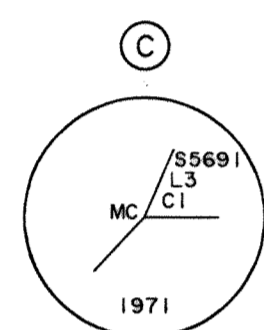
REFERENCE SHOULD BE MADE TO SHEET No. 1 AND SHEET No. 6 FOR ADDITIONAL SURVEY INFORMATION



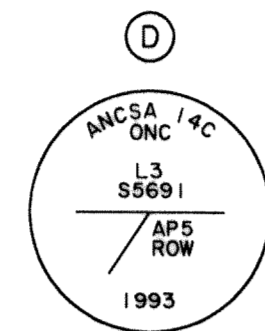
Found a stainless steel post, 2 1/2 ins. diam., firmly set, projecting 3 ins. above ground, with brass cap mkd. as shown; no original accessories. This cor. is designated as angle point No. 9, Pineapple Cove Road Segment "A" Right-of-way.



Found a stainless steel post, 2 1/2 ins. diam., firmly set, projecting 2 ins. above ground, in a collar of stone, 1 1/2 ft. diam., with brass cap mkd. as shown, from which the original bearing trees. A spruce, 10 ins. diam., bears N. 78° E., 23.1 ft. dist., with scribe marks X BT visible on open blazes. A spruce, 15 ins. diam., bears S. 27 3/4° W., 43.56 ft. dist., with scribe marks CII LII S5691 BT visible on an open blaze. This cor. is designated as angle point No. 1, Pineapple Cove Road Segment "A" Right-of-way.



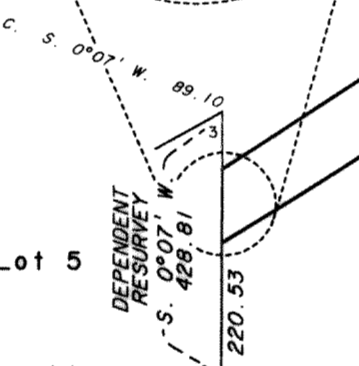
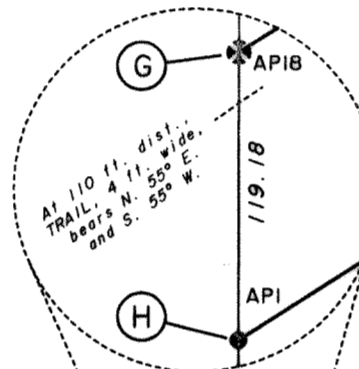
Found an iron post, 2 1/2 ins. diam., firmly set, projecting 5 ins. above ground, in a mound of stone, 2 ft. base, to top of brass cap mkd. as shown, from which the original bearing trees. A 2 boled spruce, 13 ins. diam., bears S. 66 1/4° E., 133.32 ft. dist., with fragmentary scribe marks visible on partially healed blazes (Record, S. 67° E.). A spruce, 10 ins. diam., bears S. 27 1/2° E., 141.24 ft. dist., with healed blazes (Record, S. 25° E.).



Set a stainless steel post, 28 ins. long, 2 1/2 ins. diam., 26 ins. in the ground, with brass cap mkd. as shown. No accessories taken. Deposit a magnet in a white plastic case at the base of the stainless steel post.

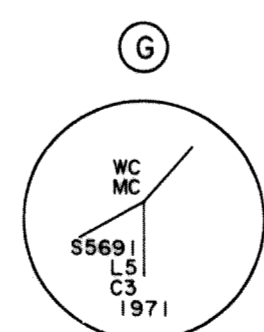
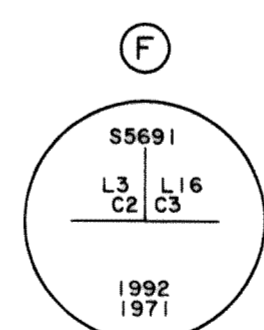
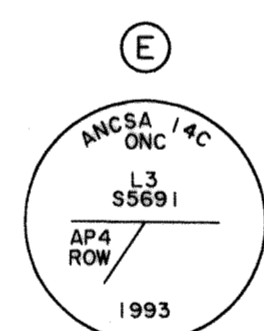
PINEAPPLE COVE ROAD SEGMENT "B" RIGHT-OF-WAY

Table with columns for point pairs (AP1-AP2 to AP17-AP18), bearings, and distances in feet.

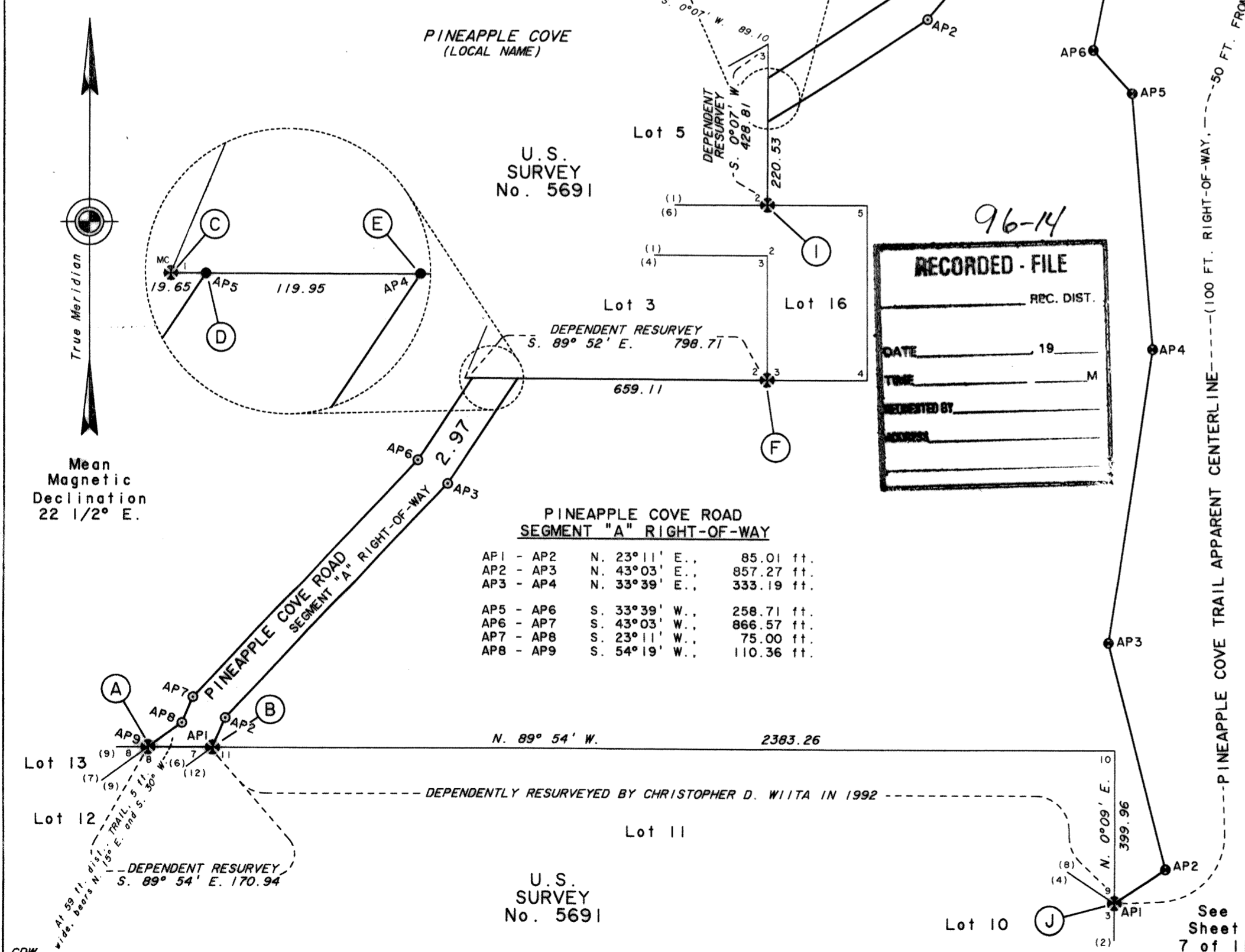


PINEAPPLE COVE TRAIL APPARENT CENTERLINE

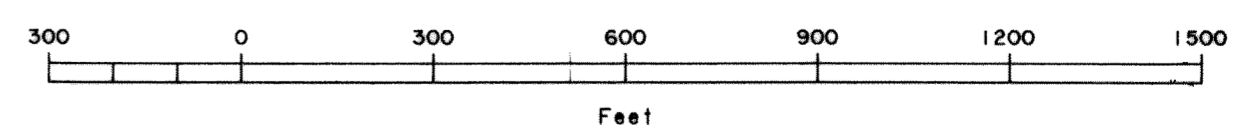
Table with columns for point pairs (AP1-AP2 to AP10-AP11), bearings, and distances in feet.



- LEGEND: Symbols for recovered B.L.M. monument, ANCSA 14(c) primary monument, ANCSA 14(c) secondary monument, and ANCSA 14(c) secondary monument with aluminum rod.



RECORDED - FILE stamp with fields for REC. DIST., DATE, TIME, and REGISTERED BY.



96-14 10 of 11

200