

ALASKA NATIVE CLAIMS SETTLEMENT ACT (ANCSA) SECTION 14(c), P.L. 92-203 (85 STAT. 688, 702, 703) SETH-DE-YA-AH CORPORATION AT MINTO, ALASKA

This plat, in 12 sheets, contains the entire survey record.

U.S. Survey No. 4220A was surveyed by Harold M. Van Horn, Surveying Technician, in 1967. A Supplemental Plat was accepted in 1984. The survey was dependently resurveyed by Eric Stahlke, Registered Alaska Land Surveyor, under contract in 2004.

U.S. Survey No. 4455D was surveyed by William D. Nelson, Supervisory Cadastral Surveyor, in 1967.

U.S. Survey No. 4469 was surveyed by William D. Nelson, Supervisory Cadastral Surveyor, in 1967.

IRA Traditional Village Development (New) Minto, Alaska was surveyed by Kenneth M. Colette, Registered Alaska Land Surveyor, No. LS 3950-S, in 1982. The plat of this survey was recorded in the Manley Hot Springs Recording District on May 20, 1982, under No. 82-2.

IRA Traditional Village Development (New) Minto, Alaska, Block 10 and 11 Addition, was surveyed by James F. Nims, Registered Alaska Land Surveyor, No. LS 3183-S, in 1984. The plat of this survey was recorded in the Manley Hot Springs Recording District on August 27, 1984 under No. 84-3.

Minto Airport Heights, Plat No. 2007-3, was surveyed by Eric Stahlke, Registered Alaska Land Surveyor, No. LS-6945, in 2006. The plat of this survey was recorded in the Manley Hot Springs Recording District on July 2, 2007 under No. 2007-3.

The Record of Survey of Portions of Plats 82-2 and 84-3, Manley Hot Springs Recording District was surveyed by Eric Stahlke, Registered Alaska Land Surveyor, No. LS-6945, in 2008. The plat of this survey was recorded in the Manley Hot Springs Recording District on November 3, 2008 under No. 2008-2.

Neal Charley Subdivision, was surveyed by Eric Stahlke, Registered Alaska Land Surveyor, No. LS-6945 in 2005. The plat of this survey was recorded in the Manley Hot Springs Recording District on March 10, 2009 under No. 2009-1.

The Record of Survey of the Minto Airport Improvements, was surveyed by Martin D. Shurr, Registered Alaska Land Surveyor, No. LS-9105, in 2010. The plat of this survey was recorded in the Manley Hot Springs Recording District on May 25, 2011 under No. 2011-1.

This survey was executed by Michael Stephen, Registered Alaska Land Surveyor No. LS-13959, for Tanana Chiefs Conference, July 22 through August 12, 2014, in accordance with the specifications set forth in the Manual of Surveying Instructions (2009), Special Instructions dated October 25, 2012, approved April 23, 2013, Assignment Instructions dated July 18, 2014, under Contract No. L12AV20011, awarded May 18, 2012, and Notice to Proceed dated July 8, 2014.

UNITED STATES DEPARTMENT OF THE INTERIOR BUREAU OF LAND MANAGEMENT Anchorage, Alaska

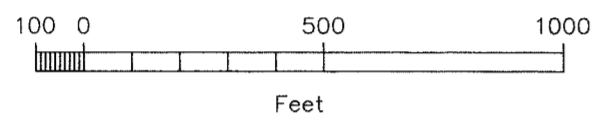
The survey represented by this plat, sheets 1-12, having been properly executed and examined, is hereby accepted for having fulfilled the requirements of Section 14(c) of the Alaska Native Claims Settlement Act.

For the Director [Signature] Chief Cadastral Surveyor for Alaska

MARCH 27, 2017 Date

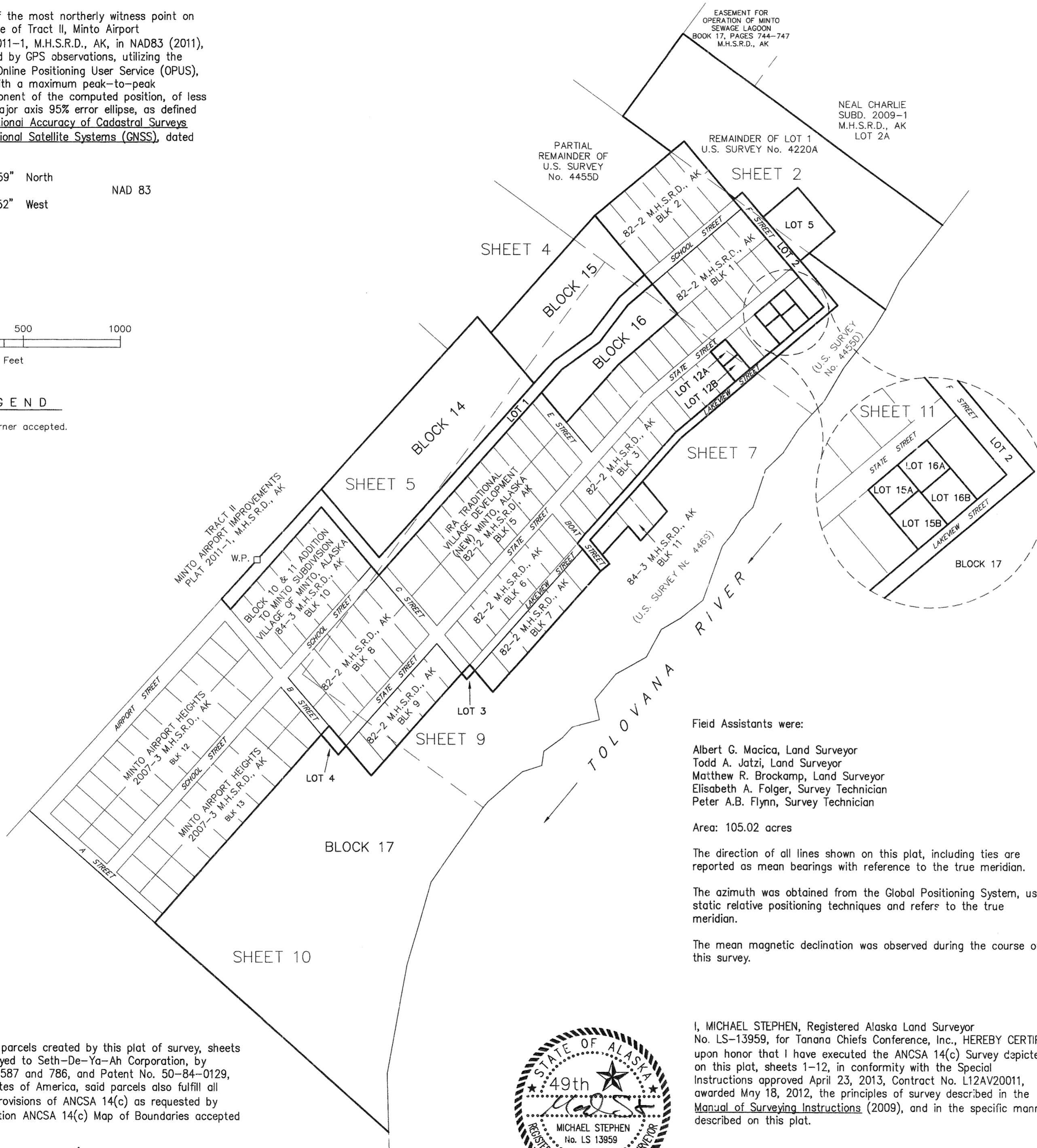
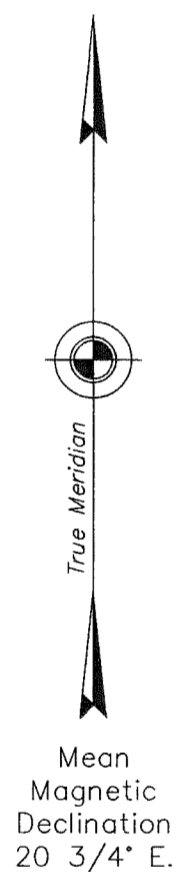
The geographic position of the most northerly witness point on the most southeasterly line of Tract II, Minto Airport Improvements, Plat No. 2011-1, M.H.S.R.D., AK, in NAD83 (2011), epoch 2010.00, determined by GPS observations, utilizing the National Geodetic Survey Online Positioning User Service (OPUS), to a Network Accuracy, with a maximum peak-to-peak separation for each component of the computed position, of less than 0.05 meter, semi-major axis 95% error ellipse, as defined in Standards for the Positional Accuracy of Cadastral Surveys When Using Global Navigational Satellite Systems (GNSS), dated February 23, 2009, is:

Latitude: 65° 08' 54.359" North NAD 83 Longitude: 149° 21' 33.352" West



LEGEND

Local corner accepted.



Field Assistants were: Albert G. Macica, Land Surveyor; Todd A. Jatzl, Land Surveyor; Matthew R. Brockamp, Land Surveyor; Elisabeth A. Folger, Survey Technician; Peter A.B. Flynn, Survey Technician

Area: 105.02 acres. The direction of all lines shown on this plat, including ties are reported as mean bearings with reference to the true meridian. The azimuth was obtained from the Global Positioning System, using static relative positioning techniques and refer to the true meridian. The mean magnetic declination was observed during the course of this survey.

I, MICHAEL STEPHEN, Registered Alaska Land Surveyor No. LS-13959, for Tanana Chiefs Conference, Inc., HEREBY CERTIFY upon honor that I have executed the ANCSA 14(c) Survey depicted on this plat, sheets 1-12, in conformity with the Special Instructions approved April 23, 2013, Contract No. L12AV20011, awarded May 18, 2012, the principles of survey described in the Manual of Surveying Instructions (2009), and in the specific manner described on this plat.



[Signature] Date Registered Land Surveyor

I hereby certify that the parcels created by this plat of survey, sheets 1-12 are on lands conveyed to Seth-De-Ya-Ah Corporation, by Interim Conveyance Nos. 587 and 786, and Patent No. 50-84-0129, issued by the United States of America, said parcels also fulfill all entitlements under the provisions of ANCSA 14(c) as requested by Seth-De-Ya-Ah Corporation ANCSA 14(c) Map of Boundaries accepted January 10, 2013.

March 22, 2017 Date [Signature] President, Seth-De-Ya-Ah Corporation

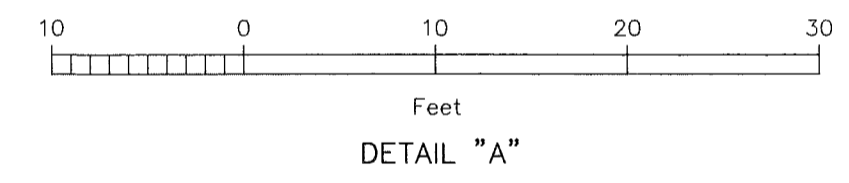
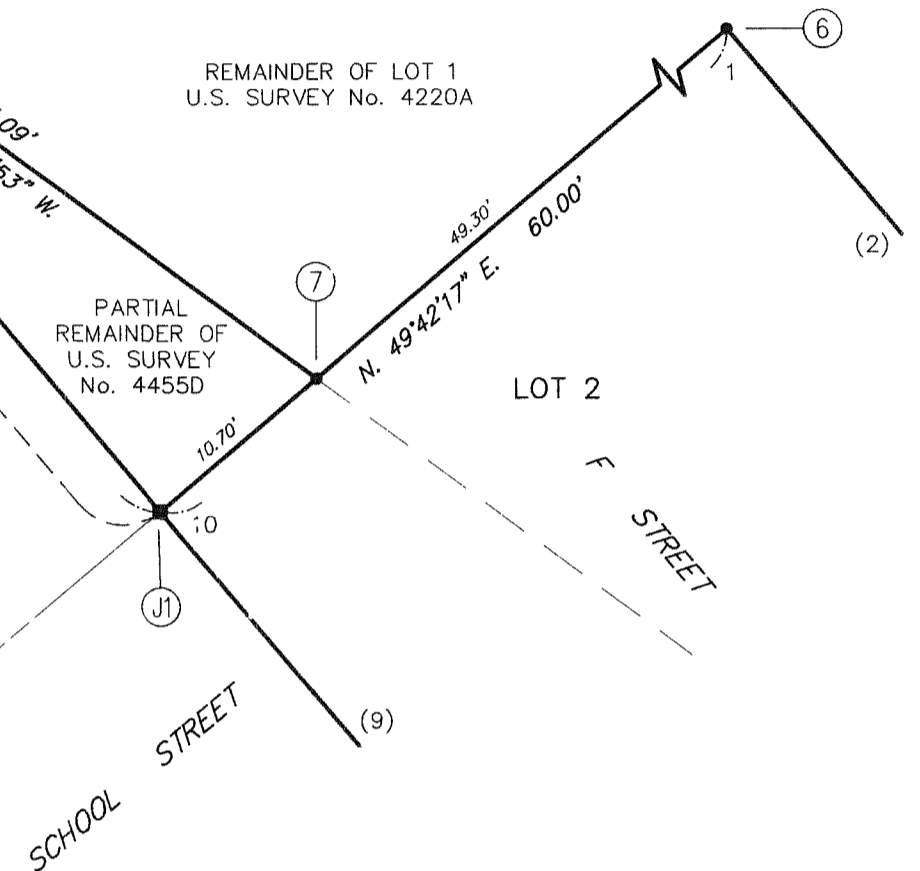
Manley Hot Springs 2017-1

ALASKA NATIVE CLAIMS SETTLEMENT ACT (ANCSA) SECTION 14(c), P.L. 92-203 (85 STAT. 688, 702, 703)

SETH-DE-YA-AH CORPORATION AT MINTO, ALASKA

REFERENCE SHOULD BE MADE TO SHEET No. 1 FOR SURVEY INFORMATION

REMAINDER OF LOT 1 U.S. SURVEY No. 4220A



EASEMENT FOR OPERATION OF MINTO SEWAGE LAGOON BOOK 17, PAGES 744-747 M.H.S.R.D., AK

NEAL CHARLIE SUBD. 2009-1 M.H.S.R.D., AK LOT 2A

IRA TRADITIONAL VILLAGE DEVELOPMENT (NEW) MINTO, ALASKA 82-2 M.H.S.R.D., AK Blk 2

PARTIAL REMAINDER OF U.S. SURVEY No. 4455D

REMAINDER OF LOT 1 U.S. SURVEY No. 4220A

PARTIAL REMAINDER OF U.S. SURVEY No. 4455D

SEE SHEET 4

SEE DETAIL "A"

LOT 5 1.59 DOC 2003-000080 M.H.S.R.D., AK

LOT 2 2.87

LOT 16A

LOT 16B

BLOCK 17 (U.S. SURVEY No. 4455D)

TOLOVANA RIVER

REMAINDER OF LOT 1, U.S. SURVEY No. 4220A From cor. No. 4, Lot 1, U.S. Survey No. 4220A, a meander cor., on the right bank of the Tolovana River, thence downstream along the right bank of the Tolovana River, at the line of ordinary high water, along the 2004 Adjusted Record Meanders

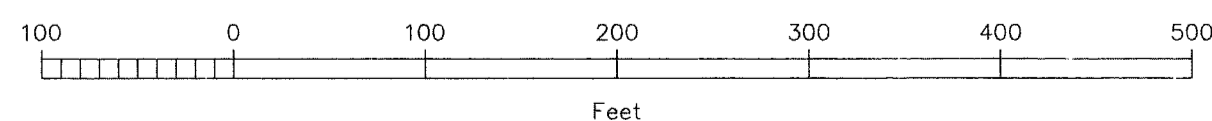
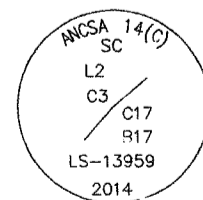
M1. S. 37°24'19" W. 361.48' M2. S. 26°07'06" W. 165.72'

At the end of course, cor. No. 1, Lot 1, U.S. Survey No. 4220A, identical with cor. No. 4, U.S. Survey No. 4455D, now identical with cor. No. 21, Block 17 of this survey, all meander cors.

LEGEND

- BLM monument recovered.
BLM corner remonumented.
Local corner accepted.
Local corner accepted, remonumented.
Local corner disturbed, reset a calculated position.
ANCSA 14(c) secondary monument set.
ANCSA 14(c) primary monument set.
Accessory note: Bearing trees are scribed "X BT"
See sheet 3 for recovered and set monument descriptions.

Typical cap marking for primary monument set this survey.



Manley Hot Springs 2017-1

MONUMENTS RECOVERED

MONUMENTS SET

ALASKA NATIVE CLAIMS SETTLEMENT ACT (ANCSA) SECTION 14(c), P.L. 92-203 (85 STAT. 688, 702, 703)

SETH-DE-YA-AH CORPORATION AT MINTO, ALASKA

REFERENCE SHOULD BE MADE TO SHEET No. 1 FOR SURVEY INFORMATION

No accessories taken.

The marks S4455D were inadvertently omitted on the brass cap. Monument is located on level ground among willow and alder. The true cor. falls on a concrete manhole ring.

A spruce, 4 ins. diam., bears S. 71 1/2° E., 27.7 ft. dist., mkd. X BT. A spruce, 4 ins. diam., bears S. 40 1/2° W., 11.4 ft. dist., mkd. X BT. Monument is located in a trail, on level ground among birch and spruce with alder and willow undergrowth. The trail, 6 ft. wide, bears S. 45° E. and N. 45° W.

A spruce, 6 ins. diam., bears N. 50 1/2° E., 137.7 ft. dist., mkd. X BT. The most northerly steel post, 4 1/2 ins. diam., 5 ft. high, painted red, bears N. 66° W., 54.0 ft. dist., to the center of post.

Monument is located on an easterly facing shale slope. Determined at record distance from recovered local cors. of record. There is no remaining evidence of the original cor. Monument is located on level ground on the edge of the northerly cor. of F and State Streets. Apparent centerline of F Street, bears N. 45° E., 27.5 ft. dist., road bears S. 40° E. and N. 40° W. Apparent centerline of State Street, bears S. 45° E., 27.7 ft. dist., road bears S. 50° W.

Monument is located on level ground among grass and willow. Edge of F Street, bears S. 50° W., 15.0 ft. dist., street bears S. 40° E. and N. 40° W. Set a steel rebar, 5/8 ins. diam., 30 ins. long, 30 ins. in the ground, with alum. cap, 2 1/2 ins. diam., mkd. as shown. Monument is located on level ground among grass and willow. The easterly edge of F Street, bears West, 34.0 ft. dist., street bears S. 40° E. and N. 40° W. The southerly edge of gravel road, bears North, 30.0 ft. dist., road bears N. 50° E. and S. 50° W.

Set a stainless steel post, 28 ins. long, 2 1/2 ins. diam., 28 to 35 ins. in the ground, with brass cap mkd. as shown, and a magnet in a white plastic case deposited at the base, from which the following accessories,

A magnet, in a metallic silver plastic case, bears N. 45° E., 9.9 ft. dist., buried 18 ins. below ground. A magnet, in a fluorescent pink plastic case, bears S. 45° E., 9.9 ft. dist., buried 18 ins. below ground. Monument is located on level mossy ground among spruce and scattered willow.

A magnet, in a metallic silver plastic case, bears N. 45° E., 9.9 ft. dist., buried 18 ins. below ground. The most westerly cor. of the Minto store, bears S. 60° E., 121.4 ft. dist. Monument is located on level ground among grass at the northerly edge of gravel road. Edge of gravel road bears S. 38° E., 3.5 ft. dist., road bears N. 45° E. and S. 46° W.

No accessories taken.

Monument is located on level ground among grass and willow. Northerly edge of gravel road, bears S. 40° E., 17.0 ft. dist., road bears N. 50° E. and S. 50° W.

A stop sign, located at the northerly intersection of State and F Streets, bears S. 60° W., 55.1 ft. dist. A power pole with transformer, bears N. 24° W., 34.3 ft. dist., to the head of P.K. Nail driven in the side facing the stainless steel post, 3 ft. the above ground. Monument is located at the northerly intersection of F Street and gravel road. Edge of road, bears South, 5 ft. dist., road bears East and N. 65° W.

A spruce, 5 ins. diam., bears N. 36° E., 40.7 ft. dist., mkd. X BT. A power pole, bears N. 67° W., 125.4 ft. dist., to the head of Mag Nail driven in the side facing the stainless steel post, 3 ft. the above ground. Monument is located on level ground among grass and willow. Edge of F Street, bears S. 50° W., 15.0 ft. dist., street bears S. 40° E. and N. 40° W.

A steel post, 4 1/2 ins. diam., 5 ft. high, painted yellow, bears N. 8° E., 158.2 ft. dist. to the center of post. A steel post, 4 1/2 ins. diam., 5 ft. high, painted red, bears S. 40° E., 24.9 ft. dist. to the center of post. Monument is located at the easterly edge of gravel road that goes to the sewage lagoon. Apparent centerline of gravel road, bears N. 85° W., 9.0 ft. dist., 15 ft. wide road bears N. 10° E. and S. 10° W.

No accessories taken.

The marks S4455D were inadvertently omitted on the brass cap. Monument is located on the northerly side of School Street, at the toe of slope, 4 ft. high.

Steel rebar, 5/8 in. diam., flush with gravel road, firmly set, no cap.

At the cor. point, set a stainless steel post, 28 ins. long, 2 1/2 ins. diam., 30 ins. in the ground, with brass cap mkd. as shown, deposit the original rebar alongside stainless steel post and a magnet in a white plastic case at the base.

Monument is located in gravel road at the approximate mid-point of curve between Lakeview Street and F Street. Apparent centerline of road, bears East, 7 ft. dist., Lakeview Street bears S. 20° W. and F Street bears N. 10° W.

Steel rebar, 5/8 in. diam., buried 18 ins. below the ground, firmly set, no cap.

At the corner point, set a stainless steel post, 28 ins. long, 2 1/2 ins. diam., 33 ins. in the ground, with brass cap mkd. as shown, deposit the original rebar alongside stainless steel post and a magnet in a white plastic case at the base.

Monument is located on level ground at the southerly cor. of F Street and State Streets. Apparent centerline of F Street, bears N. 45° E., 28.1 ft. dist., street bears S. 40° E. and N. 40° W. Apparent centerline of State Street, bears N. 45° W., 30.9 ft. dist., street bears S. 50° W.

Determined at proportionate distance from recovered local cors. of record. The record alum. post, 2 1/2 ins. diam., projecting 6 ins. above the ground, leaning easterly, with a damaged alum. cap, mkd. as shown, was found to be out of position with other local cors. of record and was not utilized in this survey.

At the corner point, reset the original alum. post, 28 ins. long, 2 1/2 ins. diam., 28 ins. in the ground, and deposit a magnet in a white plastic case at the base.

Monument is located on level ground. Apparent centerline of F Street bears East, 31.0 ft. dist. Street bears S. 40° E. and N. 40° W.

Steel rebar, 5/8 in. diam., flush with the ground, firmly set, with alum. cap, 2 ins. diam., mkd. as shown.

Steel rebar, 5/8 in. diam., projecting 7 ins. above ground, bent northeasterly, no cap.

At the cor. point, set a stainless steel post, 28 ins. long, 2 1/2 ins. diam., 28 ins. in the ground, with brass cap mkd. as shown, deposit the bent rebar alongside stainless steel post and a magnet in a white plastic case at the base.

Monument is located on the northerly side of School Street, at the toe of slope, 4 ft. high.

Point for cor. No. 2, remainder of Lot 1, U.S. Survey No. 4220A, at intersection with line 3-4, U.S. Survey No. 4455D, determined at record distance from the bearing trees marked by Stahlke in 2004.

A spruce, 7 ins. diam., bears N. 46 1/2° E., 35.0 ft. dist., with illegible scribe marks visible on a mostly healed blaze. (Record N. 44° E.)

A spruce, 8 ins. diam., bears S. 12° E., 29.7 ft. dist., with illegible scribe marks visible on a mostly healed blaze. (Record S. 13 1/2° E.)

At the corner point, set a stainless steel post, 28 ins. long, 2 1/2 ins. diam., 28 ins. in the ground, with brass cap mkd. as shown, deposit a magnet in a white plastic case at the base, from which the remaining original accessory

A spruce stump, 6 ins. diam., 1 ft. high, bears N. 4° E., 14.4 ft. dist., with scribe marks BT visible on an open blaze. (Record North, 13.2 ft.)

Monument is located on level ground among spruce, birch, willow and alder in the center of a trail. The trail, 12 ft. wide, bears S. 52° E. and N. 52° W.

A stainless steel post, 2 1/2 ins. diam., projecting 12 ins. above the ground, bent, missing brass cap, was found to be disturbed and was not utilized in this survey, with a steel rebar, 5/8 in. diam. alongside. The bent stainless steel post was removed from the site and the rebar was buried alongside of the new stainless steel post.

A stainless steel post, 2 1/2 ins. diam., projecting 4 ins. above the ground, firmly set, with brass cap mkd. as shown, from which the original bearing trees

A spruce, 12 ins. diam., bears S. 22 1/4° E., 32.3 ft. dist., with scribe marks X BT visible on partially healed blazes.

A spruce, 6 ins. diam., bears S. 78° E., 14.5 ft. dist., with scribe marks X BT visible on partially healed blazes.

A stainless steel post, 2 1/2 ins. diam., buried 2 ins. below the ground, firmly set, with brass cap mkd. as shown, from which the original bearing trees

An aspen, 7 ins. diam., bears N. 4° E., 40.9 ft. dist., with scribe marks X BT visible on mostly healed blazes.

An aspen, 6 ins. diam., bears S. 75 1/2° E., 51.5 ft. dist., with scribe marks X BT visible on mostly healed blazes.

An iron post, 2 1/2 ins. diam., projecting 3 ins. above the ground, firmly set, with brass cap mkd. as shown. There is no remaining evidence of the original accessories and no new accessories were taken in 2004, from which new accessories

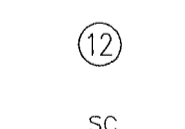
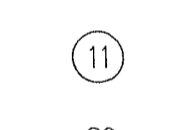
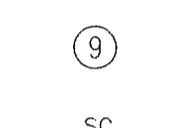
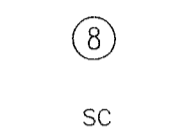
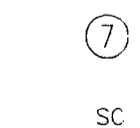
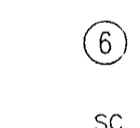
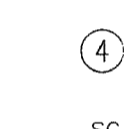
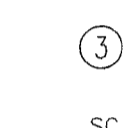
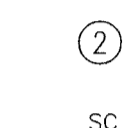
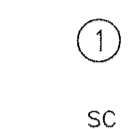
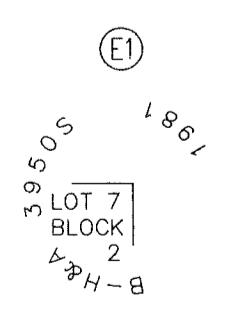
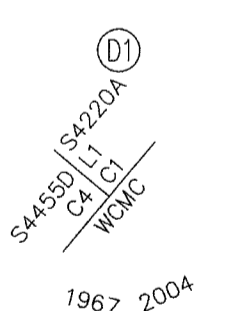
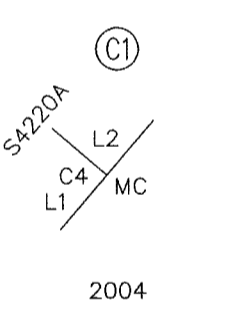
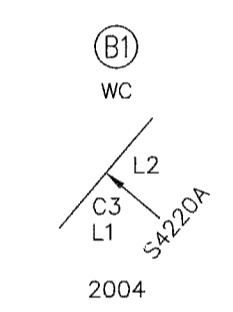
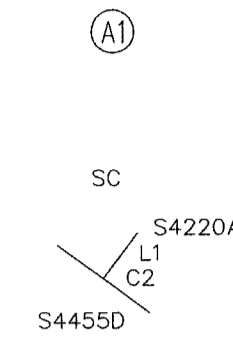
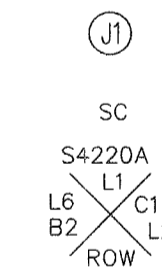
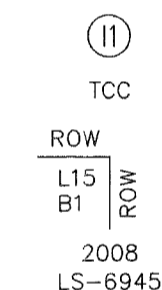
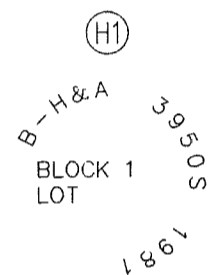
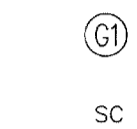
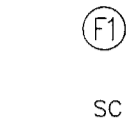
A magnet, in a metallic silver plastic case, bears N. 30° E., 9.9 ft. dist., buried 16 ins. below the ground.

A magnet, in a fluorescent orange plastic case, bears N. 60° W., 9.9 ft. dist., buried 16 ins. below the ground.

Add the marks 2C14 to the brass cap. This monument is now identical with the witness cor. to cor. No. 21, Block 17, a meander cor. of this survey.

Steel rebar, 5/8 in. diam., projecting 20 ins. above the ground, upright, loosely set, with alum. cap, 1 1/2 ins. diam., mkd. as shown.

Drive down rebar to project 2 ins. above the ground, firmly set.



ALASKA NATIVE CLAIMS SETTLEMENT ACT (ANCSA) SECTION 14(c), P.L. 92-203 (85 STAT. 688, 702, 703) SETH-DE-YA-AH CORPORATION AT MINTO, ALASKA

REFERENCE SHOULD BE MADE TO SHEET No. 1 FOR SURVEY INFORMATION

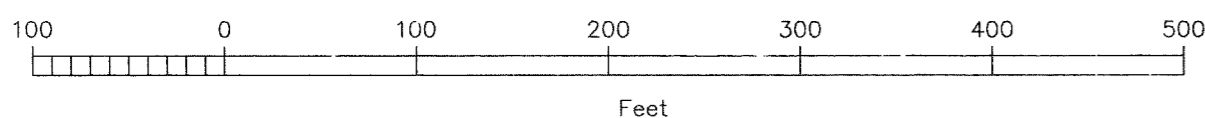
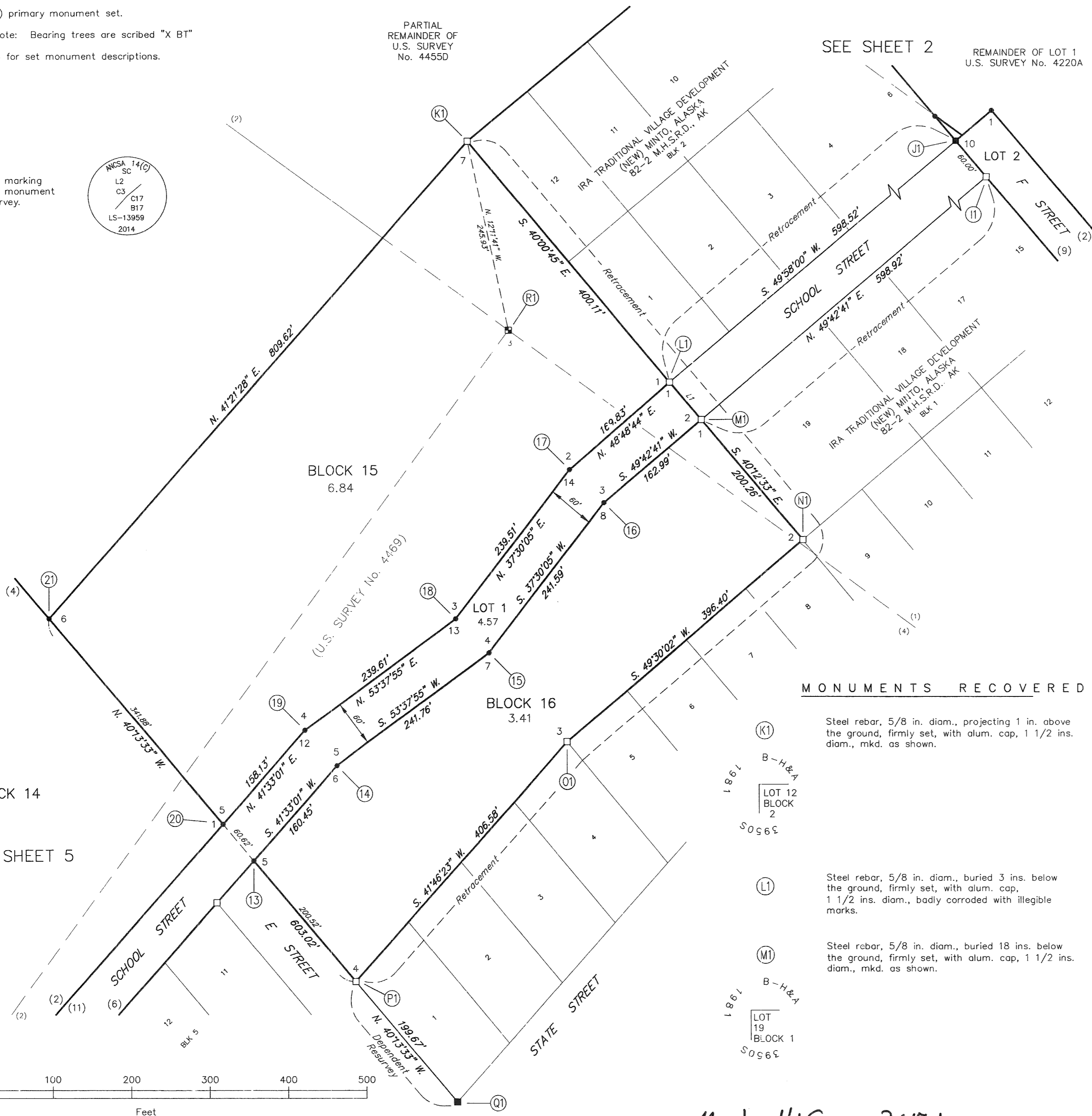
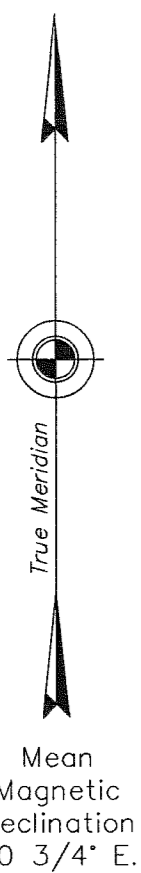
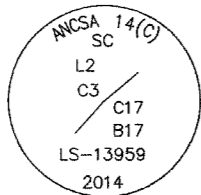
LINE TABLE		
LINE	LENGTH	BEARING
L1	62.67'	S. 39°55'16" E.

LEGEND

- Local corner accepted.
- Local corner accepted, remonumented.
- ⊠ U.S. Survey corner established from original accessory, not monumented.
- ANCSA 14(c) primary monument set.

Accessory note: Bearing trees are scribed "X BT"
See sheet 6 for set monument descriptions.

Typical cap marking for primary monument set this survey.



MONUMENTS RECOVERED

- (K1) Steel rebar, 5/8 in. diam., projecting 1 in. above the ground, firmly set, with alum. cap, 1 1/2 ins. diam., mkd. as shown.
- (L1) Steel rebar, 5/8 in. diam., buried 3 ins. below the ground, firmly set, with alum. cap, 1 1/2 ins. diam., badly corroded with illegible marks.
- (M1) Steel rebar, 5/8 in. diam., buried 18 ins. below the ground, firmly set, with alum. cap, 1 1/2 ins. diam., mkd. as shown.
- (N1) Steel rebar, 5/8 in. diam., buried 2 ins. below the ground, firmly set, with alum. cap, 1 1/2 ins. diam., mkd. as shown.
- (P1) An alum. post, 2 1/2 ins. diam., projecting 6 ins. above the ground, firmly set, with alum. cap, 2 1/2 ins. diam., mkd. as shown.
- (Q1) Steel rebar, 5/8 in. diam., projecting 10 ins. above ground, bent, leaning northwesterly, no cap.

Steel rebar, 5/8 in. diam., buried 2 ins. below the ground, firmly set, with alum. cap, 1 1/2 ins. diam., mkd. as shown.

Steel rebar, 5/8 in. diam., buried 2 ins. below the ground, firmly set, with alum. cap, 1 1/2 ins. diam., mkd. as shown.

An alum. post, 2 1/2 ins. diam., projecting 6 ins. above the ground, firmly set, with alum. cap, 2 1/2 ins. diam., mkd. as shown.

Steel rebar, 5/8 in. diam., projecting 10 ins. above ground, bent, leaning northwesterly, no cap.

At the cor. point, set a stainless steel post, 28 ins. long, 2 1/2 ins. diam., 28 ins. in the ground, with brass cap mkd. as shown, deposit the original rebar alongside stainless steel post and a magnet in a white plastic case at the base.

Monument is located on level ground on the northerly cor. of State and E. Streets. Apparent centerline of State Street, bears S. 42° E., 26 ft. dist., street bears N. 42° E. and S. 42° W. Apparent centerline of E. Street, bears S. 42° W., 41 ft. dist., street bears S. 42° E. and N. 42° W.

Determined at record bearing and distance from the remaining original bearing tree,

A cottonwood, 7 ins. diam., bears S. 6 1/2° E., 48.18 ft. dist., with fragmentary scribe marks S4469 C3 visible on a mostly open blaze.

Not remonumented.

The corner point falls in a trail approximately 5 ft. below original ground. The trail, 6 ft. wide, bears S. 50° E. and N. 50° W.

This point was used to establish the true point for cor. No. 4, U.S. Survey No. 4469, identical with cor. No. 1, U.S. Survey No. 4455D, both meander cors., determined at record distance, on a projected line through and from the witness cor.

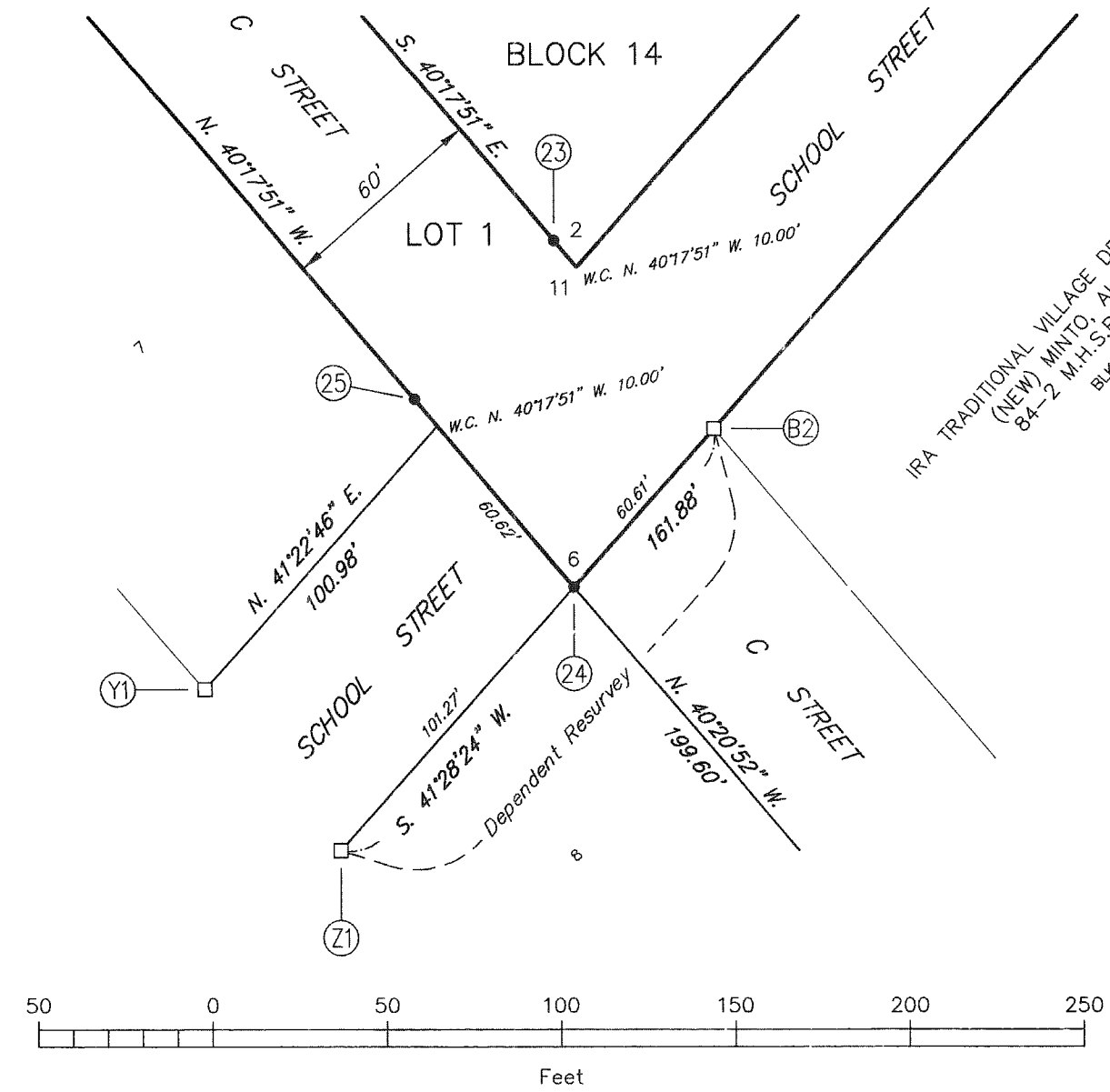
Manley Hot Springs 2017-1

ALASKA NATIVE CLAIMS SETTLEMENT ACT (ANCSA) SECTION 14(c), P.L. 92-203 (85 STAT. 688, 702, 703)

SETH-DE-YA-AH CORPORATION AT MINTO, ALASKA

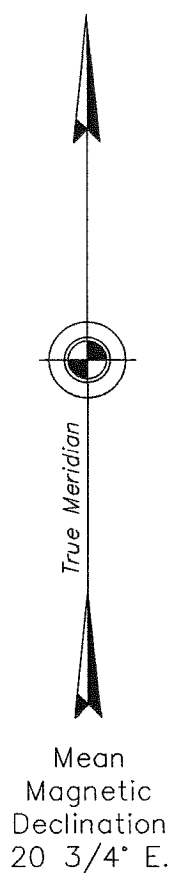
REFERENCE SHOULD BE MADE TO SHEET No. 1 FOR SURVEY INFORMATION

SEE SHEET 4



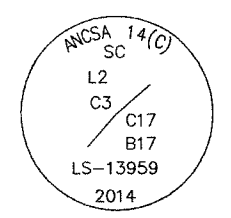
LINE TABLE

LINE	LENGTH	BEARING
L1	71.03'	S. 41°33'01" W.
L2	70.46'	N. 40°31'54" W.

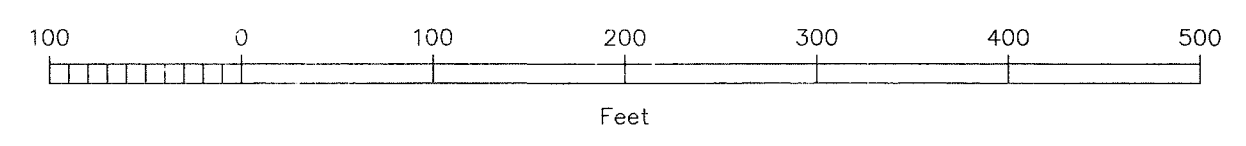


At W.P.
 Lat. 65° 08' 54.359" N.
 Long. 149° 21' 33.352" W.
 NAD83

Typical cap marking for primary monument set this survey.



- LEGEND
- Local corner accepted.
 - Local corner accepted, remonumented.
 - ANCSA 14(c) primary monument set.
- Accessory note: Bearing trees are scribed "X BT"
 See sheet 6 for set monument descriptions.



Manley Hot Springs 2017-1

ALASKA NATIVE CLAIMS SETTLEMENT ACT (ANCSA) SECTION 14(c), P.L. 92-203 (85 STAT. 688, 702, 703) SETH-DE-YA-AH CORPORATION AT MINTO, ALASKA

REFERENCE SHOULD BE MADE TO SHEET No. 1 FOR SURVEY INFORMATION

MONUMENTS RECOVERED

(S1) An alum. post, 2 1/2 ins. diam., projecting 4 ins. above the ground, firmly set, with alum. cap, 2 1/2 ins. diam., mkd. as shown. TCC AIRPORT TR II 2006 6945-S

(T1) An alum. post, 2 1/2 ins. diam., projecting 3 ins. above the ground, firm set, with alum. cap, 3 1/4 ins. diam., mkd. as shown. STATE OF ALASKA MINTO AIRPORT TR II WP PLS 9105 2010 DOT/RF

(U1) Steel rebar, 5/8 in. diam., projecting 8 ins. above the ground, firmly set, with alum. cap, 2 ins. diam., mkd. as shown. TCC ROW ROW 2008 LS-6945

(V1) Steel rebar, 5/8 in. diam., buried 12 ins. below the ground, bent, leaning northerly, no cap. At the cor. point, set a stainless steel post, 28 ins. long, 2 1/2 ins. diam., 28 ins. in the ground, with brass cap mkd. as shown, deposit the bent rebar alongside stainless steel post and a magnet in a white plastic case at the base. SC L1 CB L14 B10 ROW ROW

(W1) Steel rebar, 5/8 in. diam., buried 9 ins. below the ground, firmly set, with alum. cap, 2 ins. diam., mkd. as shown. TCC ROW ROW L8 B10 2008 LS-6945

(X1) Steel rebar, 5/8 in. diam., flush with the ground, firmly set, with alum. cap, 2 ins. diam., mkd. as shown. TCC L8 ROW L7 B10 2008 LS-6945

(Y1) Steel rebar, 5/8 in. diam., flush with the ground, firmly set, with alum. cap, 2 ins. diam., badly worn, mkd. as shown. TCC L1 C7 B10 08 LS-6945

(Z1) Steel rebar, 5/8 in. diam., buried 2 ins. below the ground, firmly set, with alum. cap, 1 1/2 ins diam., mkd. as shown. B-H&A 9/8 BLOCK 8 S O S 6 5

(A2) Steel rebar, 5/8 in. diam., flush with the ground, firmly set, with alum. cap, 2 ins. diam., mkd. as shown. TCC L8 L7 ROW B8 2008 LS-6945

(B2) Steel rebar, 5/8 in. diam., projecting 1 in. above the ground, firmly set, with alum. cap, 2 ins. diam., mkd. as shown. TCC ROW L20 B5 2008 LS-6945

(C2) Steel rebar, 5/8 in. diam., flush with the ground, firmly set, with alum. cap, 2 ins. diam., mkd. as shown. TCC L11 B5 2008 LS-6945

MONUMENTS SET

Set a stainless steel post, 28 ins. long, 2 1/2 ins. diam., 28 to 35 ins. in the ground, with brass cap mkd. as shown, and a magnet in a white plastic case deposited at the base, from which the following accessories,

(13) A power pole, bears S. 73° W., 4.3 ft. dist., to the head of Mag Nail driven in the side facing the stainless steel post, 2 ft. the above ground. Monument is located on level ground at the easterly cor. of School and E Streets. Apparent centerline of School Street, bears N. 40° W., 30 ft. dist., street bears N. 40° E. and S. 40° W. Apparent centerline of E Street, bears S. 40° W., 39 ft. dist., street bears S. 40° E. L1 C5 B16 ROW

(14) A power pole, bears N. 35° E., 16.4 ft. dist., to the head of Mag Nail driven in the side facing the stainless steel post, 2 ft. the above ground. Monument is located on level ground on the southerly edge of School Street. Apparent centerline of School Street, bears N. 50° W., 22 ft. dist., street bears N. 50° E. and S. 40° W. L1 C5 C6 B16

(15) No accessories taken. Monument is located on level ground on the southerly side of School Street in playground area. Apparent centerline of School Street, bears N. 50° W., 28 ft. dist., street bears N. 20° E. and S. 50° W. The northerly edge of pea gravel playground area constructed with 2 x 8 in. lumber, bears N. 50° W., 1 ft. dist. SC L1 C4 C7 B16

(16) No accessories taken. SC B15 C2 C14 L1

(17) Monument is located in gravel parking lot of church. Apparent centerline of church driveway, bears N. 45° E., 79 ft. dist., driveway bears S. 45° E. and N. 45° W. Apparent centerline of School Street, bears N. 45° W., 32 ft. dist., street bears N. 45° E. and S. 20° W. SC B15 C2 C14 L1

(18) No accessories taken. SC B15 C2 C14 L1

(19) A power pole, bears S. 24° W., 24.8 ft. dist., to the head of Mag Nail driven in the side facing the stainless steel post, 2 ft. the above ground. A power pole, bears N. 32° W., 24.8 ft. dist., to the head of Mag Nail driven in the side facing the stainless steel post, 2 ft. the above ground. Monument is located on level ground on the northerly edge of School Street. Apparent centerline of School Street, bears S. 50° E., 28 ft. dist., street bears N. 20° E. and S. 50° W. SC B15 C3 C13 L1

(20) No accessories taken. SC B15 C4 C12 L1

(21) Monument is located on level ground on the northerly edge of School Street. Apparent centerline of School Street, bears S. 50° E., 34.8 ft. dist., street bears N. 50° E. and S. 40° W. Apparent centerline of gravel driveway, 14 ft. wide, bears N. 60° E., 19.6 ft. dist., driveway bears S. 30° E. and N. 30° W. SC B15 C5 C1 L1

(22) No accessories taken. SC L1 C6 ROW L8 B8

(23) True point determined at Right-of-Way width, on line from reestablished local cors. of record. True point falls in a drainage ditch, unsuitable for permanent monumentation. From this point, the point selected for a witness cor., bears N. 40°17'51" W., 10.00 ft. dist. There is no remaining evidence of the original cor. Monument is located on level ground at the southerly cor. of School and C Streets. Apparent centerline of School Street, bears N. 42° W., 42 ft. dist., street bears N. 42° E. and S. 42° W. Apparent centerline of C Street, bears S. 42° E., 25 ft. dist., street bears S. 42° E. and N. 42° W. SC L1 C6 ROW L8 B8

(24) True point determined at Right-of-Way width, on line from reestablished local cors. of record. True point falls in a drainage ditch, unsuitable for permanent monumentation. From this point, the point selected for a witness cor., bears N. 40°17'51" W., 10.00 ft. dist. There is no remaining evidence of the original cor. Monument is located on level ground on the northerly side of School Street at the easterly edge of a gravel driveway. Apparent centerline of School Street, bears S. 40° E., 28 ft. dist., street bears N. 40° E. and S. 40° W. Apparent centerline of gravel driveway, 17 ft. wide, bears S. 40° W., 12 ft. dist., driveway bears S. 45° E. and N. 45° W. SC B15 C5 C1 L1

(25) Determined by projected bearing, at record distance, from recovered local cors. of record, from which new bearing trees A spruce, 4 ins. diam., bears S. 66° E., 9.0 ft. dist., mkd. X BT. A spruce, 4 ins. diam., bears N. 23° W., 15.0 ft. dist., mkd. X BT. There is no remaining evidence of the original cor. Monument is located in the center of trail, on level ground among spruce and alder. The trail bears S. 39° E. and N. 39° W. SC L7 B10 ROW L1

(26) A spruce, 6 ins. diam., bears East, 50.7 ft. dist., mkd. X BT. A spruce, 12 ins. diam., bears N. 30 1/2° W., 67.9 ft. dist., mkd. X BT. Monument is located on level ground on the easterly edge of a dirt road. Apparent centerline of dirt road, 12 ft. wide, bears N. 60° W., 4 ft. dist., road bears N. 20° E. and S. 10° W. The apparent centerline of the intersection of Airport and C Streets, bears South, 53 ft. dist., C Street bears S. 42° E. and Airport Street bears S. 42° W. AIRPORT TR II C3 B14 C10 L1

Manley Hot Springs 2017-1

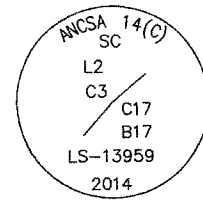
ALASKA NATIVE CLAIMS SETTLEMENT ACT
(ANCSA) SECTION 14(c),
P.L. 92-203 (85 STAT. 688, 702, 703)
SETH-DE-YA-AH CORPORATION
AT
MINTO, ALASKA

REFERENCE SHOULD BE MADE
TO SHEET No. 1
FOR SURVEY INFORMATION

LEGEND

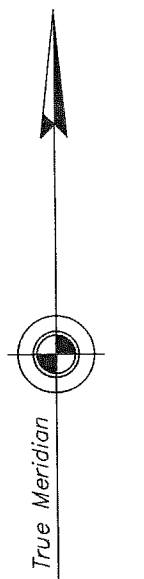
- Local corner accepted.
- Local corner accepted, remonumented.
- ANCSA 14(c) secondary monument set.
- ANCSA 14(c) primary monument set.

Typical cap marking
for primary monument
set this survey.

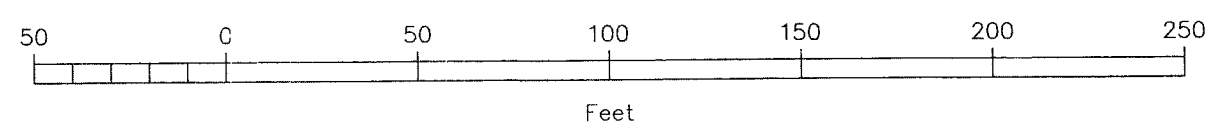
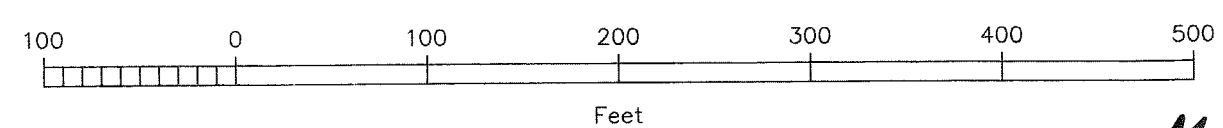
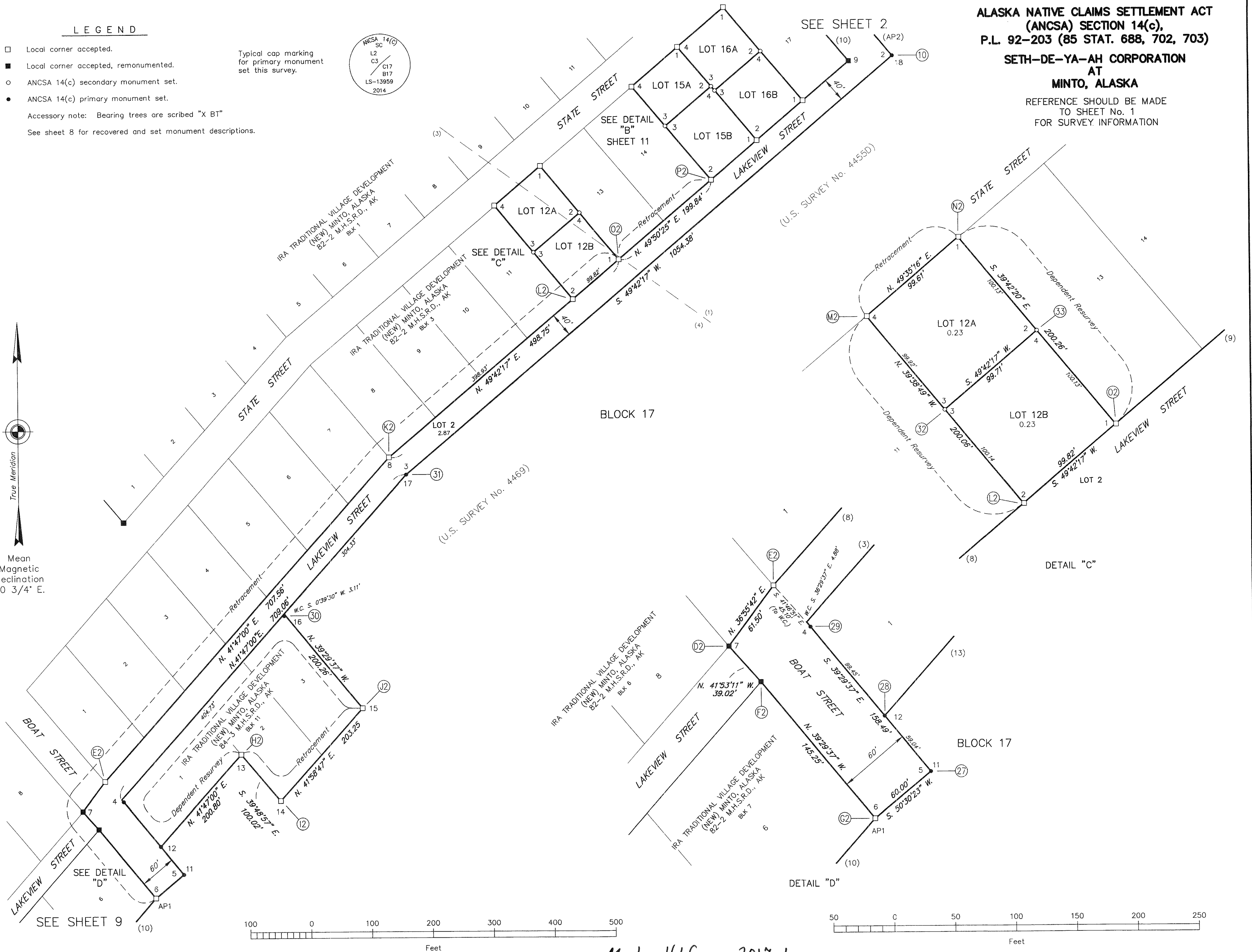


Accessory note: Bearing trees are scribed "X BT"

See sheet 8 for recovered and set monument descriptions.



Mean
Magnetic
Declination
20 3/4° E.



Manley Hot Springs 2017-1

MONUMENTS RECOVERED

(D2)
SC
L8 B6 ROW C7 L2
ROW

Steel rebar, 5/8 in. diam., projecting 9 ins. above the ground, bent, leaning northeasterly, no cap.

At the cor. point, set a stainless steel post, 28 ins. long, 2 1/2 ins. diam., 28 ins. in the ground, with brass cap mkd. as shown, deposit the bent rebar alongside stainless steel post and a magnet in a white plastic case at the base.

Monument is located on a gentle southeasterly facing slope on the northerly edge of Lakeview Street. Apparent centerline of Lakeview Street bears S. 45° E., 25 ft. dist., street bears N. 42° E. and S. 42° W.

(E2)
TCC
B3 L1 ROW ROW

Steel rebar, 5/8 in. diam., buried 2 ins. below the ground, firmly set, with alum. cap, 2 ins. diam. mkd. as shown.

2008
LS-6945

(F2)
SC
ROW L2 L6 B7

Steel rebar, 5/8 in. diam., buried 20 ins. below the ground, firmly set, no cap.

At the cor. point, centered over the rebar, set a stainless steel post, 28 ins. long, 2 1/2 ins. diam., 35 ins. in the ground, with brass cap mkd. as shown and deposit a magnet in a white plastic case at the base.

Monument is located on level ground at the southerly edge of the Lakeview Street. Apparent centerline of Lakeview Street bears N. 45° W., 13 ft. dist., street bears N. 42° E. and S. 42° W.

(G2)
3950 S LOT 6 BLOCK 7
B-H&A

Steel rebar, 5/8 in. diam., projecting 1 in. above the ground, firmly set, with alum. cap, 1 1/2 ins. diam., mkd. as shown.

(H2)
A & E CO.
B11 1

Steel rebar, 5/8 in. diam., projecting 1 in. above the ground, firmly set, with damaged alum. cap, 1 1/2 ins. diam., mkd. as shown.

(I2)
A & E CO.
B11 2

Steel rebar, 5/8 in. diam., projecting 1 in. above the ground, firmly set, with alum. cap, 1 1/2 ins. diam., mkd. as shown.

(J2)
A & E CO.
B11 3

Steel rebar, 5/8 in. diam., projecting 1 in. above the ground, firmly set, with alum. cap, 1 1/2 ins. diam., mkd. as shown.

(K2)
TCC
B3 L8 ROW L7

Steel rebar, 5/8 in. diam., flush with the ground, firmly set, with alum. cap, 2 ins. diam., mkd. as shown.

2008
LS-6945

(L2)
TCC
B3 L12 ROW L11

Steel rebar, 5/8 in. diam., flush with the ground, firmly set, with alum. cap, 2 ins. diam., mkd. as shown.

2008
LS-6945

(M2)
3950 S
& A
11/12 BLOCK 3 1981

Steel rebar, 5/8 in. diam., flush with the ground, firmly set, with alum. cap, 1 1/2 ins. diam., mkd. as shown.

(N2)
3950 S
B-H&A
12/13 BLOCK 3 1981

Steel rebar, 5/8 in. diam., projecting 4 ins. above the ground, bent, leaning southwesterly, with alum. cap, 1 1/2 ins. diam., mkd. as shown.

(O2)
3950 S
B-H&A
12/13 BLOCK 3 1981

Steel rebar, 5/8 in. diam., buried 11 ins. below the ground, firmly set, with alum. cap, 1 1/2 ins. diam., mkd. as shown.

(P2)
TCC
B3 L15 ROW L14

Steel rebar, 5/8 in. diam., flush with the ground, firmly set, with alum. cap, 2 ins. diam., mkd. as shown.

2008
LS-6945

MONUMENTS SET

Set a stainless steel post, 28 ins. long, 2 1/2 ins. diam., 28 to 35 ins. in the ground, with brass cap mkd. as shown, and a magnet in a white plastic case deposited at the base, from which the following accessories,

(27)
SC
L2 C5 C11 B17

An aspen, 4 ins. diam., bears N. 78° E., 42.3 ft. dist., mkd. X BT.

A magnet, in a fluorescent orange plastic case, bears N. 12° W., 9.9 ft. dist., buried 12 ins. below ground.

Monument is located on the easterly side of Boat Street on a shale slope at the midpoint of curve. Apparent centerline of Boat Street, bears S. 50° W., 21 ft. dist. street bears S. 10° W. and N. 45° W.

(28)
SC
L1 B11 C12 L2 B17

Determined at Right-of-Way width and recovered local cors. of record. There is no remaining evidence of the original cor.

No accessories taken.

Monument is located on a gentle southeasterly facing slope at the toe of a 4 ft. high shale slope along the easterly side of Boat Street.

(29)
SC WC
C4 L2 L1 B11

True point determined from Right-of-Way width and recovered local cors. of record. True point falls in Lakeview Street, unsuitable for permanent monumentation.

From this point, the point selected for a witness cor. bears S. 36°29'37" E., 4.88 ft. dist.

No accessories taken.

There is no remaining evidence of the original cor.

Monument is located on the southerly side of Lakeview Street at the toe of gravel slope. Apparent centerline of Lakeview Street bears N. 45° W., 13 ft. dist., street bears N. 42° E. and S. 42° W.

(30)
SC WC
L2 L3 C16 B17 B11

True point determined from Right-of-Way width and recovered local cors. of record. True point falls in Lakeview Street, unsuitable for permanent monumentation.

From this point, the point selected for a witness cor. bears S. 0°39'30" W., 3.11 ft. dist.

No accessories taken.

The arrow was inadvertently marked as an online witness cor. on the brass cap and should have been marked as an offline witness cor.

There is no remaining evidence of the original cor.

Monument is located on the southerly side of Lakeview Street at the toe of slope. Apparent centerline of Lakeview Street bears N. 45° E., 13 ft. dist., street bears N. 42° E. and S. 42° W. The center of a culvert pipe, 24 ins. diam., bears N. 42° E., 4 ft. dist.

(31)
SC
L2 C3 C17 B17

The most westerly cor. of wood post, 6 x 6 ins., bears N. 79° E., 76.9 ft. dist., at the northwest cor. of the entrance to the health center.

A power pole, bears N. 35° W., 34.8 ft. dist., to the head of Mag Nail driven in the side facing the stainless steel post, 2 ft. above the ground.

Monument is located in Lakeview Street, flush with gravel surface. Apparent centerline of Lakeview Street bears N. 45° W., 5 ft. dist., street bears N. 50° E. and S. 42° W.

ALASKA NATIVE CLAIMS SETTLEMENT ACT (ANCSA) SECTION 14(c), P.L. 92-203 (85 STAT. 688, 702, 703)

SETH-DE-YA-AH CORPORATION AT MINTO, ALASKA

REFERENCE SHOULD BE MADE TO SHEET No. 1 FOR SURVEY INFORMATION

Set a flanged stainless steel rod with a magnet embedded in the top, 30 ins. long, 9/16 ins. diam., 30 ins. in the ground, with brass cap, 1 1/2 ins. diam., mkd. as shown.

(32)
SC
L12A C3 B3 L11 C3 L12B B3

Monument is located in area of thick aspen, birch and willow.

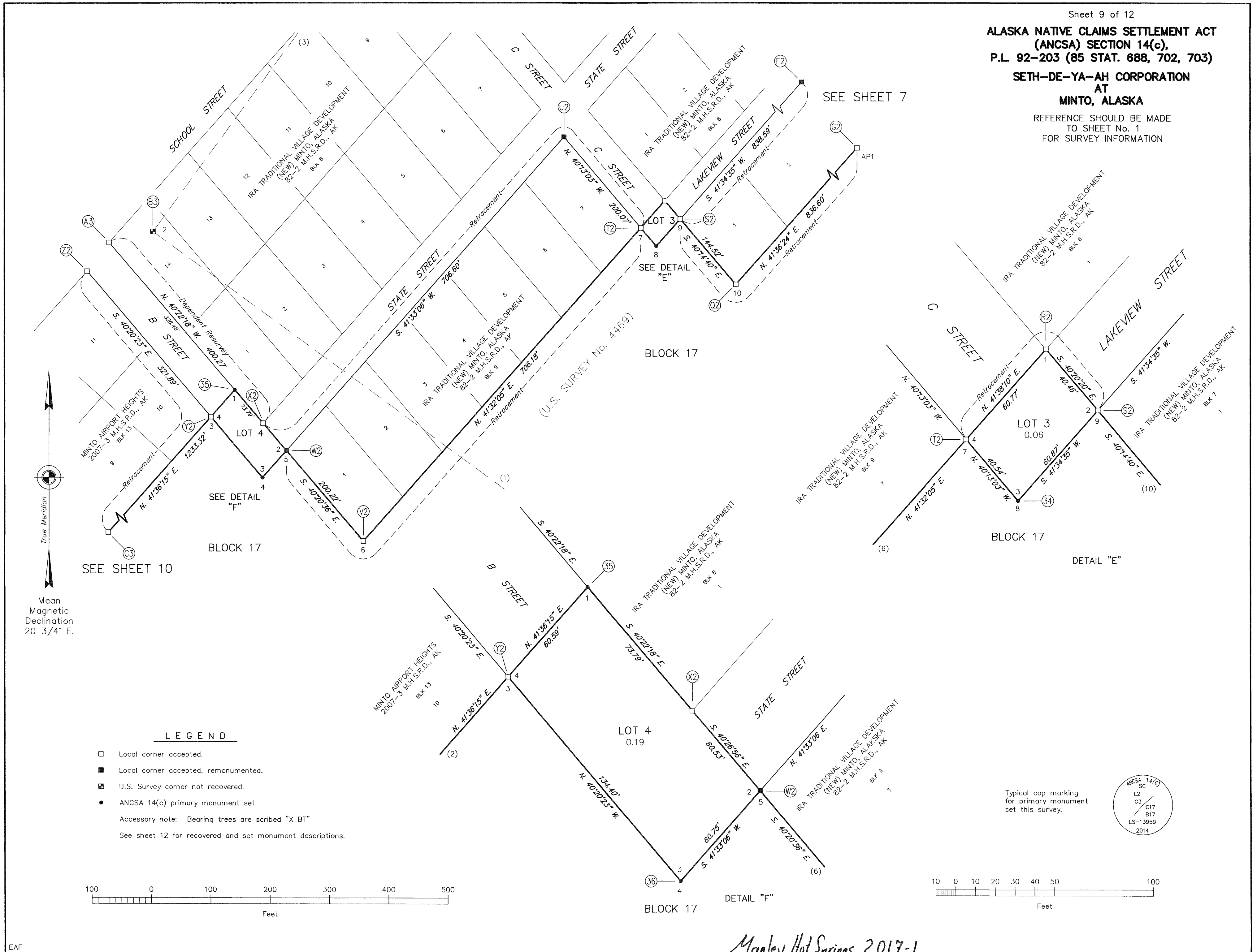
(33)
SC
L13 C2 B3 C4 B3 L12B

Monument is located in area of thick aspen, birch and willow. A willow, 5 ins. diam., bears S. 45° W., 0.5 ft. dist., not marked.

Manley Hot Springs 2017-1

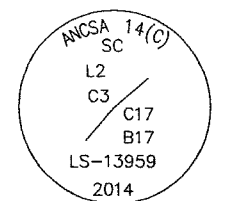
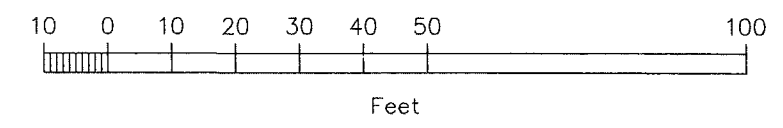
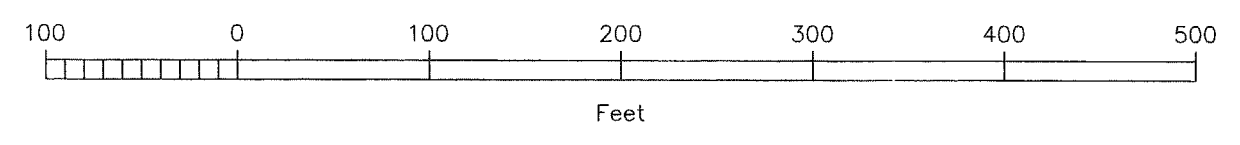
**ALASKA NATIVE CLAIMS SETTLEMENT ACT
(ANCSA) SECTION 14(c),
P.L. 92-203 (85 STAT. 688, 702, 703)
SETH-DE-YA-AH CORPORATION
AT
MINTO, ALASKA**

REFERENCE SHOULD BE MADE
TO SHEET No. 1
FOR SURVEY INFORMATION



LEGEND

- Local corner accepted.
 - Local corner accepted, remonumented.
 - ▣ U.S. Survey corner not recovered.
 - ANCSA 14(c) primary monument set.
- Accessory note: Bearing trees are scribed "X BT"
See sheet 12 for recovered and set monument descriptions.



Typical cap marking for primary monument set this survey.

Manley Hot Springs 2017-1

ALASKA NATIVE CLAIMS SETTLEMENT ACT (ANCSA) SECTION 14(c), P.L. 92-203 (85 STAT. 688, 702, 703)

SETH-DE-YA-AH CORPORATION AT MINTO, ALASKA

REFERENCE SHOULD BE MADE TO SHEET No. 1 FOR SURVEY INFORMATION

LEGEND

- Legend items: BLM monument recovered, Local corner accepted, Local corner monumented, U.S. Survey corner not recovered, U.S. Survey corner established from original accessory, not monumented, ANCSA 14(c) secondary monument set, ANCSA 14(c) primary monument set, Accessory note: Bearing trees are scribed "X BT", See sheet 12 for set monument descriptions.

MEANDERS

BLOCK 17

From the true point for cor. No. 1, Lot 1, U.S. Survey No. 4220A, identical with cor. No. 4, U.S. Survey No. 4455D, now identical with cor. No. 21, Block 17 of this survey, all meander cors., determined at record distance, on a projected line from cor. No. 2, Lot 1, U.S. Survey No. 4220A, through and from the witness cor., thence downstream with the adjusted record meanders of U.S. Survey No. 4455D, along the right bank of the Tolovana River

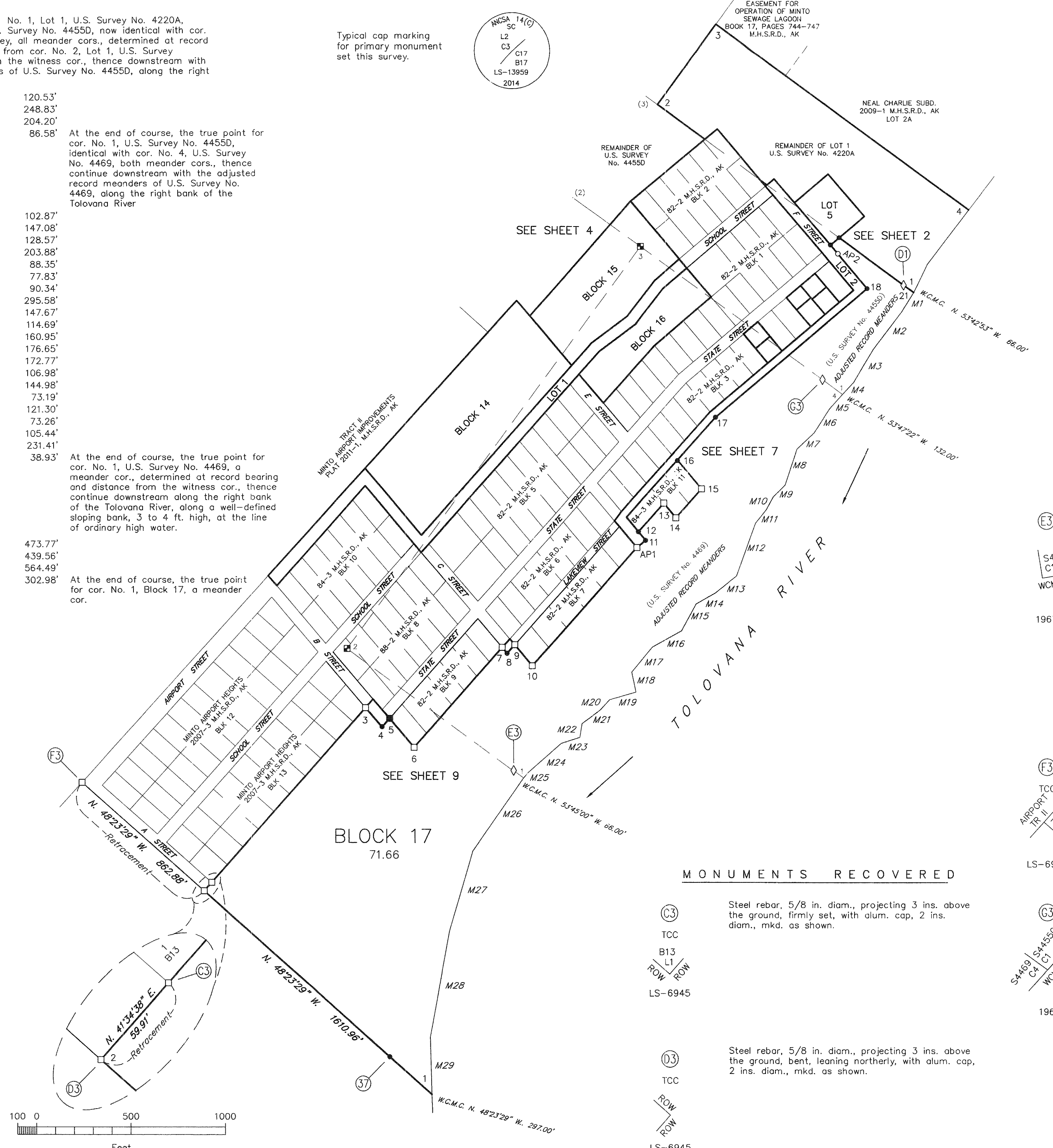
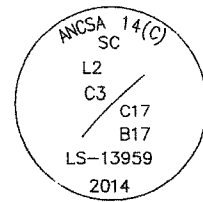
- Meander list: M1 to M29 with bearings and distances.

At the end of course, the true point for cor. No. 1, U.S. Survey No. 4455D, identical with cor. No. 4, U.S. Survey No. 4469, both meander cors., thence continue downstream with the adjusted record meanders of U.S. Survey No. 4469, along the right bank of the Tolovana River

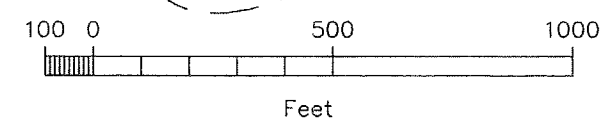
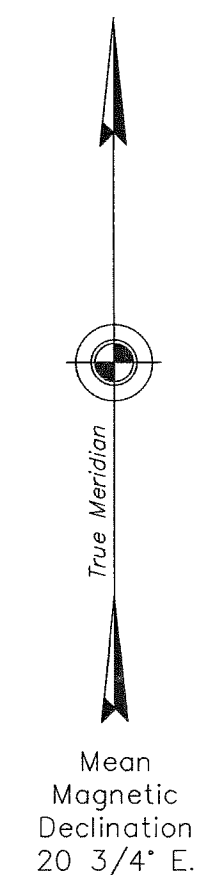
At the end of course, the true point for cor. No. 1, U.S. Survey No. 4469, a meander cor., determined at record bearing and distance from the witness cor., thence continue downstream along the right bank of the Tolovana River, along a well-defined sloping bank, 3 to 4 ft. high, at the line of ordinary high water.

At the end of course, the true point for cor. No. 1, Block 17, a meander cor.

Typical cap marking for primary monument set this survey.



- MONUMENTS RECOVERED: Detailed descriptions for monuments E3, F3, D3, TCC, ROW, and LS-6945, including bearings and distances.



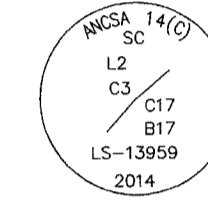
Manley Hot Springs 2017-1

Sheet 11 of 12
**ALASKA NATIVE CLAIMS SETTLEMENT ACT
 (ANCSA) SECTION 14(c),
 P.L. 92-203 (85 STAT. 688, 702, 703)**
**SETH-DE-YA-AH CORPORATION
 AT
 MINTO, ALASKA**

REFERENCE SHOULD BE MADE
 TO SHEET No. 1
 FOR SURVEY INFORMATION

LEGEND

- Local corner accepted.
 - Local corner accepted, remonumented.
 - ANCSA 14(c) secondary monument set.
 - ANCSA 14(c) primary monument set.
- Accessory note: Bearing trees are scribed "X BT"
 See sheet 12 for set monument descriptions.

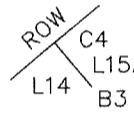


Typical cap marking
 for primary monument
 set this survey.

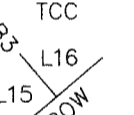
MONUMENTS RECOVERED

(H3) Steel rebar, 5/8 in. diam., buried 3 ins. below the ground, firmly set, no cap.

SC Add ANCSA 14(c) alum. cap, 2 1/2 ins. diam., to existing steel rebar, mkd. as shown.

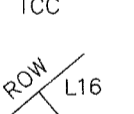


(I3) Steel rebar, 5/8 in. diam., flush with the ground, firmly set, with alum. cap, 2 ins. diam., mkd. as shown.



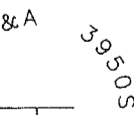
2008
 LS-6945

(J3) Steel rebar, 5/8 in. diam., flush with the ground, firmly set, with alum. cap, 2 ins. diam., mkd. as shown.



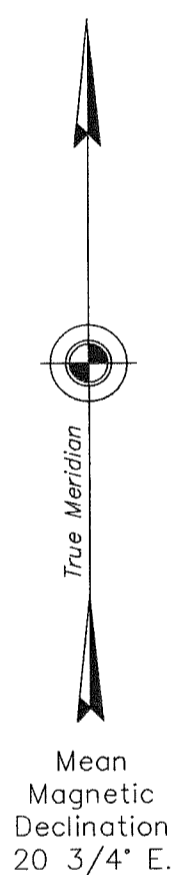
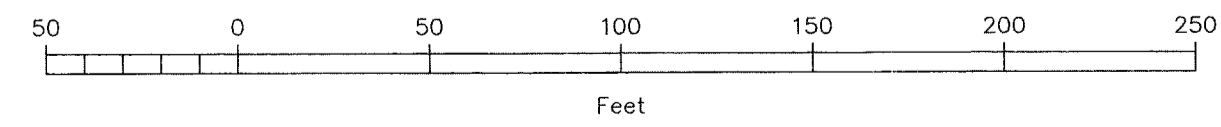
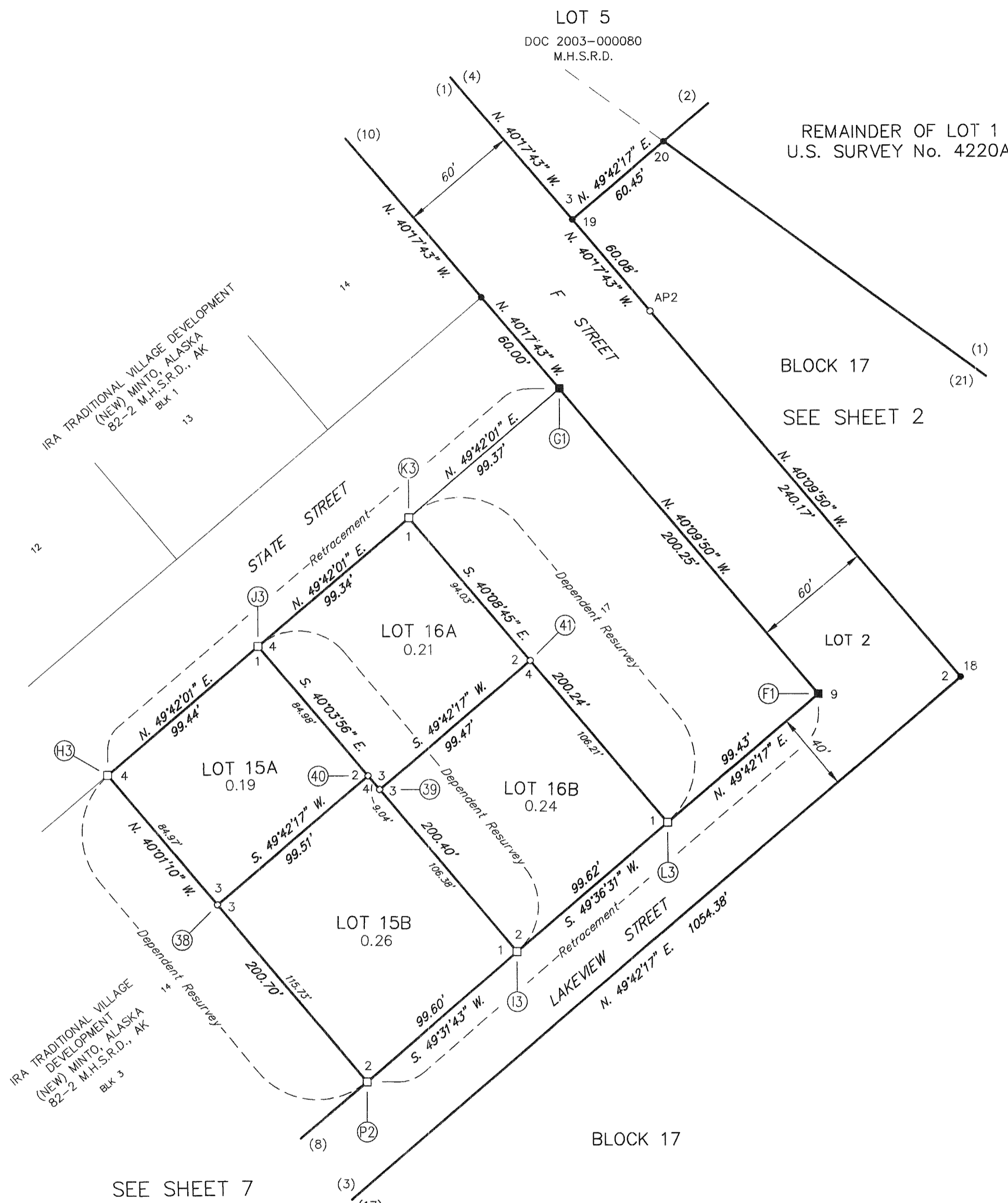
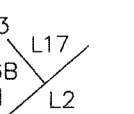
2008
 LS-6945

(K3) Steel rebar, 5/8 in. diam., buried 3 ins. below the ground, firmly set, with alum. cap, 1 1/2 ins. diam., mkd. as shown.



(L3) Steel rebar, 5/8 in. diam., buried 20 ins. below the ground, firmly set, no cap.

SC Add ANCSA 14(c) alum. cap, 2 1/2 ins. diam., to existing steel rebar, mkd. as shown.



REMAINDER OF LOT 1
 U.S. SURVEY No. 4220A

BLOCK 17
 SEE SHEET 2

SEE SHEET 7

DETAIL "B"

Manley Hot Springs 2017-1

**ALASKA NATIVE CLAIMS SETTLEMENT ACT
(ANCSA) SECTION 14(c),
P.L. 92-203 (85 STAT. 688, 702, 703)
SETH-DE-YA-AH CORPORATION
AT
MINTO, ALASKA**

REFERENCE SHOULD BE MADE
TO SHEET No. 1
FOR SURVEY INFORMATION

MONUMENTS RECOVERED

(Q2) Steel rebar, 5/8 in. diam., buried 7 ins. below the ground, firmly set, with alum. cap. 1 1/2 ins. diam., mkd. as shown.
1861
B-H&A
LOT 1
BLOCK 7
SOS6C

(X2) Steel rebar, 5/8 in. diam., flush with the ground, firmly set, with alum. cap. 2 ins. diam., mkd. as shown.
TCC
ROW/B8
L1
ROW
LS-6945 2008

(R2) Steel rebar, 5/8 in. diam., buried 5 ins. below the ground, firmly set, with alum. cap. 2 ins. diam., mkd. as shown.
TCC
ROW/B6
L1
ROW
LS-6945 2008

(Y2) Steel rebar, 5/8 in. diam., flush with the ground, firmly set, with alum. cap., 2 ins. diam. mkd. as shown.
TCC
ROW/B13
L10
ROW
2008
LS-6945

(S2) An alum. post, 2 1/2 in. diam., buried 4 ins. below the ground, firmly set, with alum. cap. 2 1/2 ins. diam., mkd. as shown.
1981
BLOCK 7
LOT 1
3950C
B-H&A

(Z2) Steel rebar, 5/8 in. diam., projecting 2 ins. above the ground, bent, leaning southeasterly, with alum. cap lying on ground, mkd. as shown.
TCC
ROW/L11
B13
2008
LS-6945

(T2) An alum. post, 2 1/2 in. diam., buried 2 ins. below the ground, firmly set, with alum. cap. 2 1/2 ins. diam., mkd. as shown.
1861
BLOCK 9
LOT 7
SOS6C
B-H&A

(A3) Steel rebar, 5/8 in. diam., flush with the ground, firmly set, with alum. cap. 2 ins. diam., mkd. as shown.
TCC
ROW/L14
B8
LS-6945 2008

(U2) Steel rebar, 5/8 in. diam., buried 10 ins below the ground, firmly set, no cap.
SC
ROW/L7
B9
At the cor. point, set a stainless steel post, 28 ins. long, 2 1/2 ins. diam., 28 ins. in the ground, with brass cap mkd. as shown. Deposit the rebar alongside stainless steel post and a magnet in a white plastic case at the base.
Monument is located at the southerly cor. of State and C Streets at the toe of slope. Apparent centerline of State Street bears N. 42° W., 32 ft. dist., street bears N. 42° E. and S. 42° W. Apparent centerline of C Street bears N. 42° E., 31 ft. dist., street bears S. 42° E. and N. 42° W.

(B3) There is no remaining evidence of the record bearing trees. The record cor. position falls under log house. The original cor. was not recovered and is shown on this plat for informational purposes only.
SC
L4
C4
B17

(V2) An alum. post, 2 1/2 ins. diam., projecting 3 ins. above the ground, firmly set, with alum. cap. 2 1/2 ins. diam., mkd. as shown.
1861
B-H
BLOCK 9
LOT 1
SOS6C

(37) A spruce, 4 ins. diam., bears S. 51 1/2° E., 22.7 ft. dist., mkd. X BT.
A spruce, 4 ins. diam., bears N. 33° W., 23.3 ft. dist., mkd. X BT.
Monument is located on a gentle southeasterly facing mossy slope among spruce.
SC
WC
B17
C1
MC

(W2) Steel rebar, 5/8 in. diam., flush the ground, firmly set, no cap.
SC
C2/L4
ROW
L1/B9
C5/B17
At the cor. point, set a stainless steel post, 28 ins. long, 2 1/2 ins. diam., 28 ins. in the ground, with brass cap mkd. as shown. Deposit the rebar alongside stainless steel post and a magnet in a white plastic case at the base.
Monument is located on the southerly side of State Street on a gentle southeasterly facing slope. Apparent centerline of State Street bears N. 42° W., 31 ft. dist., street bears N. 42° E. and S. 42° W.

MONUMENTS SET

Set a stainless steel post, 28 ins. long, 2 1/2 ins. diam., 28 to 35 ins. in the ground, with brass cap mkd. as shown, and a magnet in a white plastic case deposited at the base, from which the following accessories.

Set a flanged stainless steel rod with a magnet embedded in the top, 30 ins. long, 9/16 ins. diam., 30 ins. in the ground, with brass cap, 1 1/2 ins. diam., mkd. as shown.

(34) No accessories taken.
SC
L3
C3
C8
B17
Monument is located at the southerly cor. of C and Lakeview Streets at the toe of slopes among aspen, spruce and scattered birch.

(38) Monument is located on a gentle easterly facing grassy slope.
SC
L15A
C3
B3
L14
B3
L15B

(35) No accessories taken.
SC
ROW/B6
L1
C1
L4
Monument is located on a gentle southeasterly facing slope on the northerly side of B Street. Apparent centerline of B Street, bears S. 42° W., 31 ft. dist., street bears S. 42° E. and N. 42° W.

(39) Monument is located on a gentle easterly facing grassy slope.
SC
L16A
C3
B3
L15B
B3

(36) No accessories taken.
Cap is incorrectly marked as L4 C4 rather than L4 C3.
Monument is located on level ground on the southerly side of State Street. Apparent centerline of State Street, bears N. 42° W., 33 ft. dist., street bears N. 42° E. and S. 42° W.

(40) Monument is located on a gentle easterly facing grassy slope.
SC
L15A
C2
B3
C4
L15B

(41) Monument is located on a gentle easterly facing grassy slope.
SC
L16A
C2
B3
C4
L16B

2017-1
Plat #
Manley Hot Springs
Rec Dist
Date 4-5 2017
Time 9:03 A.M.

Manley Hot Springs 2017-1

United States Department of the Interior



BUREAU OF LAND MANAGEMENT
Alaska State Office
222 West Seventh Avenue, #13
Anchorage, Alaska 99513-7504
<http://www.blm.gov>

In Reply Refer To:
MINTO
ANCSA 14(c)
AK942100

March 30, 2017

MANLEY HOT SPRINGS RECORDING DISTRICT
1648 S. Cushman Street, #201
Fairbanks, AK 99701-6206

Dear District Recorder:

The Alaska Native Claims Settlement Act (ANCSA) Section 14(c) plat for Seth-De-Ya-Ah Corporation at Minto, Alaska, consisting of twelve (12) original sheets, transmitted to you by this letter of compliance, portrays a Cadastral Survey conducted to fulfill statutory requirements mandated by ANCSA, pursuant to Public Law 92-203 (Stat. 688, 702, 703), and satisfies the federal guidelines and requirements proclaimed for ANCSA 14(c) Surveys.

The plat represents surveyed parcels of land selected for ANCSA 14(c) reconveyances situated on portions of surface estate lands transferred from the United States of America by Patent No. 50-84-1029, and Interim Conveyance No. 786, to Seth-De-Ya-Ah Corporation.

ANCSA 14(c) Surveys have been authorized as federally mandated surveys, under the provisions of Section 13 of ANCSA, 43 U.S.C. Stat. 1612. The authority to execute all federal land surveys in Alaska is delegated by the Secretary of the Interior to the Director, Bureau of Land Management (BLM) and subsequently redelegated to me as the Chief Cadastral Surveyor, Alaska State Office. Accordingly, BLM requests that this plat be filed with the MANLEY HOT SPRINGS RECORDING DISTRICT to comply with the federal platting regulations and the agreements set forth between the Bureau of Land Management and the State Recording Authority.

Sincerely,

For Michael H. Schoder
Chief Cadastral Surveyor for Alaska