

1/4 Cor
17 16
20 21

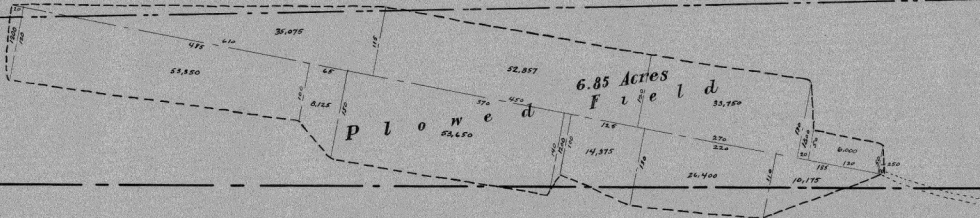
A.R.R.C.
Matanuska Valley Project
Proposed Subdivision
August Swanson Homestead
E 1/4 of SE - Sec. 17 ~ N 1/2 of NE 1/4 - Sec. 20
N 1/2 of NW 1/4 - Sec. 21 ~ T11N - R1E ~ SM
 Drawn by Robert Abernethy
 Anton Anderson - Location Engineer
 Palmer, Alaska - July 6, 1936
 Scale 1 inch = 100 ft
 Total Acres Plowed = 6.85

August Swanson
N 1/2 of NE 1/4
Section 20

Mary Morrison
Previously held by
Joseph Walton
N 1/2 of NW 1/4

George Grennen
S 1/2 of NW 1/4

Peter Murray



N 1/4 Cor
SEC 20

N 1/4 Cor
SEC 20 SEC 21