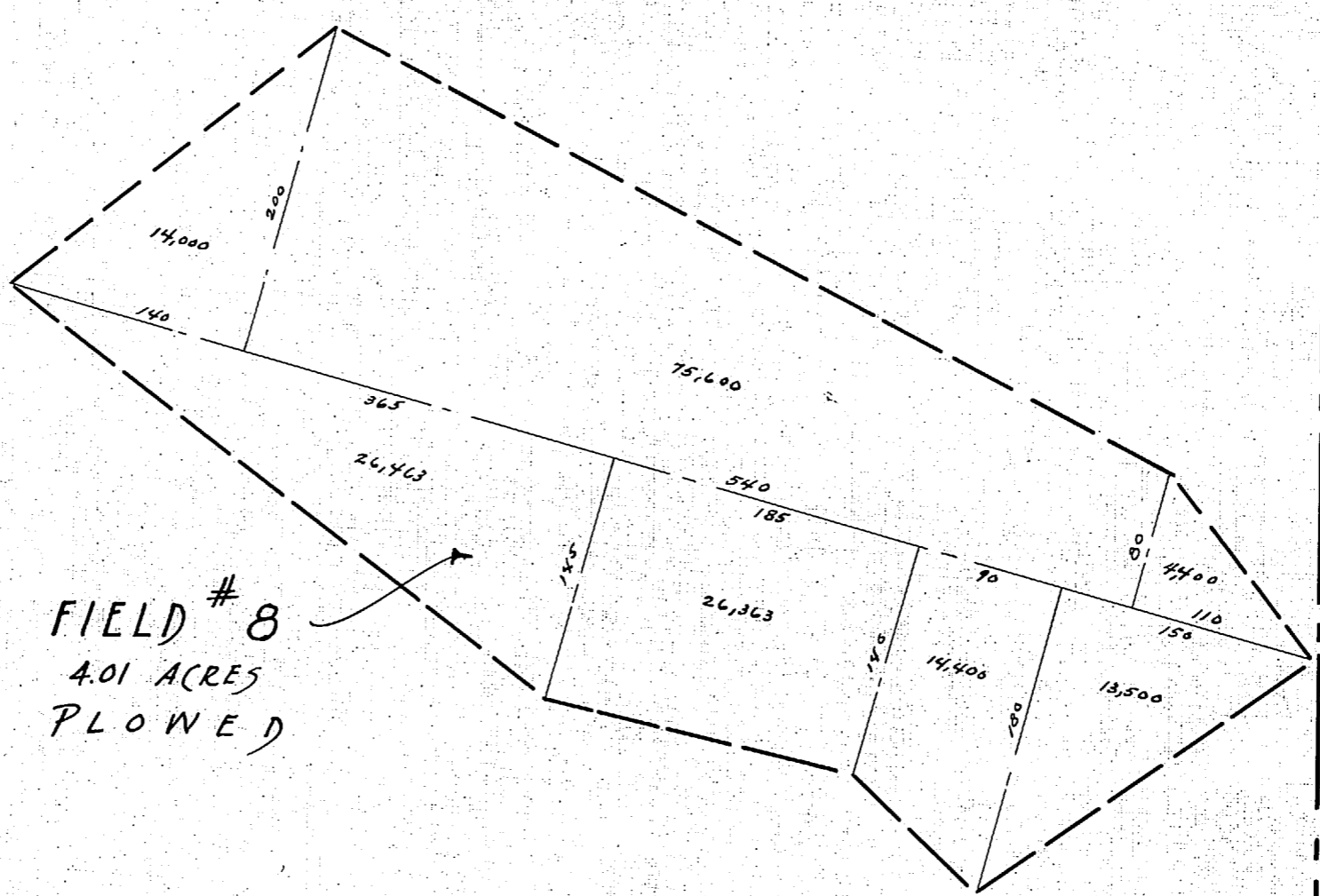


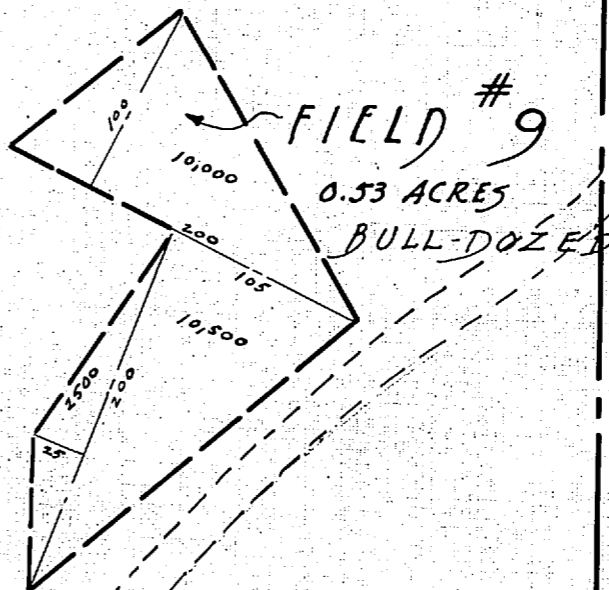
OPEN
SW¹/₄ of NW¹/₄-SEC. 17-T18N-R1E

OPEN
SE¹/₄ of NW¹/₄-SEC. 17

W 1/16
SEC. 17



FIELD #8
4.01 ACRES
PLOWED



FIELD #9
0.53 ACRES
BULL-DOZED

CLYDE V. KING
NW¹/₄ of SW¹/₄-SEC. 17-T18N-R1E

C.V. King
NE¹/₄ of SW¹/₄-SEC. 17-T18N-R1E

WILLOW CREEK ROAD

SW 1/16
SEC. 17

C.V. King
SW¹/₄ of SW¹/₄-SEC. 17-T18N-R1E

C.V. King
SE¹/₄ of SW¹/₄-SEC. 17

A.R.R.C.
Matanuska Valley Project
PLOWED GROUND
CLYDE KING HOMESTEAD
NW¹/₄ of SW¹/₄
SEC. 17-T18N-R1E
Scale 1 inch = 100 FT.
Anton Anderson - Location Engineer
Drawn by Robert Abernethy
Palmer, Alaska - Oct. 5, 1936

FIELD # 8 =	4.01 ACRES
" # 9 =	0.53 ACRES
TOTAL =	4.54 ACRES