

Open

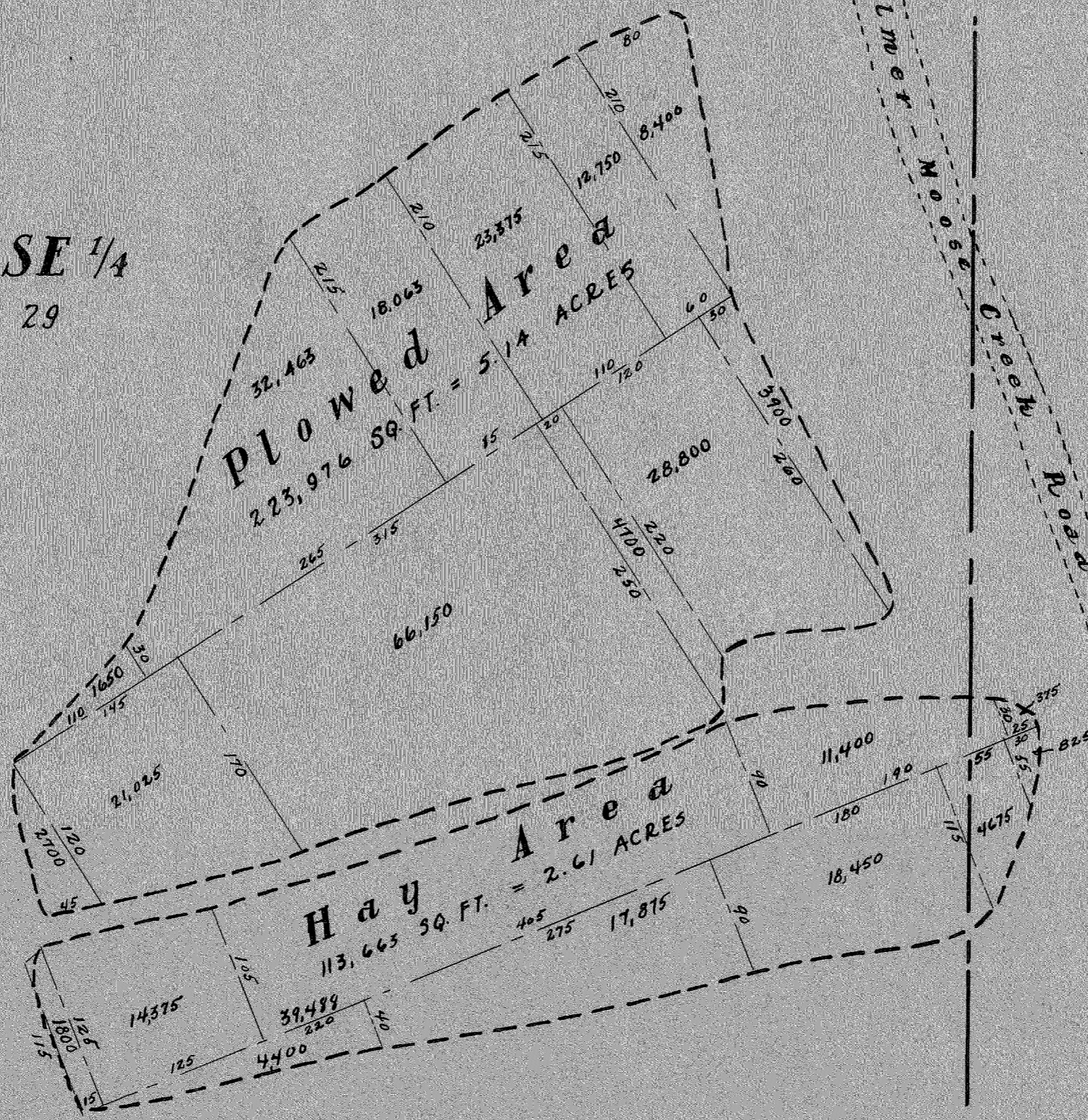
1/4 Cor.

Sec. 29 Sec. 28

NW 1/4 of SE 1/4
SECTION 29

Purchased from
E.A. Brown
SW 1/4 of SW 1/4 - LOTS 6-7

LOT # 6



Purchased from
J.M. Heady
S 1/2 of NE 1/4, N 1/2 of SE 1/4

← Road to Tracts 173-114

Ferber Bailey
TRACT # 152

A.R.R.C.
 Matanuska Valley Project
 Proposed Subdivision
 of Plowed Area
 J.M. Heady Homestead
 S 1/2 of N 1/4, N 1/2 of S 1/4 - Sec. 29 - T18N-R2E
 Drawn by Robert Abernethy
 Anton Anderson - Location Eng.
 Palmer, Alaska - July 14, 1936
 Scale 1 inch = 100 ft.
 Total Acres Plowed = 5.14
 Total Acres in Hay = 2.61