

U. S. E X P E R I M E N T A L R E S E R V E

HARRY HARMON  
F.B. LINN - PRESENT OWNER

1/4 COR.  
S 15 S 14  
S 22 S 23

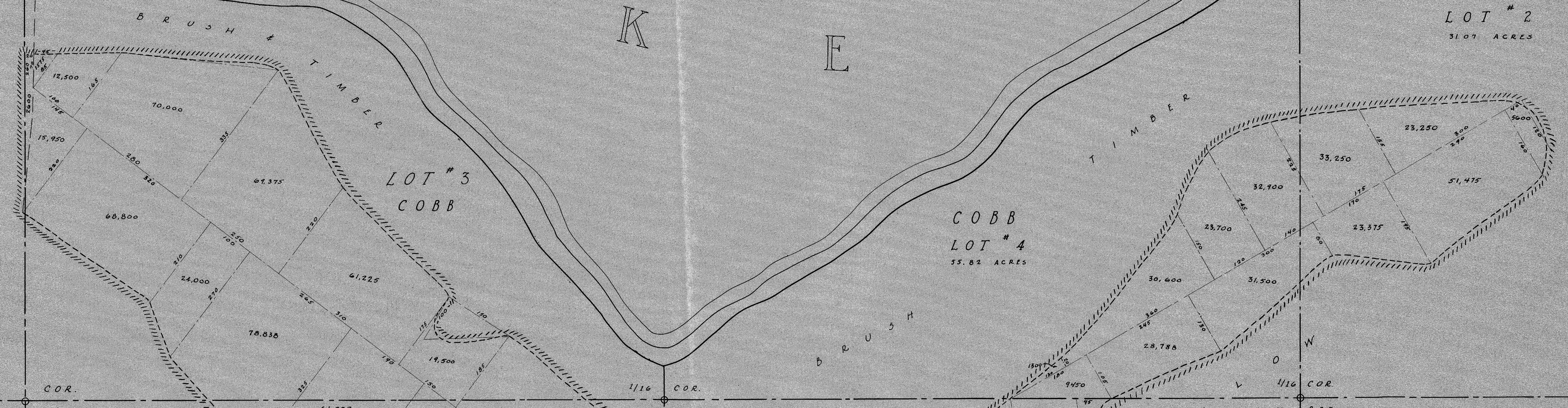
1/16 COR.  
W S 25

1/4 COR.  
S 23

L  
A  
K  
E

COBB  
LOT # 2  
31.07 ACRES

GEORGE NYLEN  
P.H. ALLEN - PRESENT OWNER



GEORGE NYLEN  
P.H. ALLEN - PRESENT OWNER

**A.R.R.C.**  
MATANUSKA VALLEY PROJECT  
PROPOSED SUBDIVISION  
OF PLOWED AREA  
COBB HOMESTEAD  
N 1/4 - SEC. 23 - T17N - R1E  
DRAWN BY ROBERT ABERNETHY  
LOCATION ENGINEER - ANTON ANDERSON  
PALMER, ALASKA - MAY 4, 1936.  
SCALE 1 INCH = 100 FT.  
  
TOTAL ACRES = 241.37  
TOTAL ACRES PLOWED = 43.51

FIELD # 1  
19.1 ACRES  
  
LOT # 3  
57.40 ACRES  
COBB

COBB  
LOT # 4

SW 1/4 - NE 1/4  
COBB

MATANUSKA VALLEY ROAD