

HAVEMEISTER
TRACT # 167
NW 1/4 of SE 1/4 - SEC. 27

NOTE: SEPARATE
TRACT SHEET DRAWN
FOR NORTH FORTY,
SHOWING OTHER FIELD.

HARRY SEARS
TRACT # 83
NE 1/4 of SE 1/4 - SEC. 27 - T18N-R1E

N. NIKLASON
NW 1/4 of SW 1/4 - SEC. 26

A. HAVEMEISTER
TRACT # 167
SW 1/4 of SE 1/4 - SEC. 27 - T18N-R1E

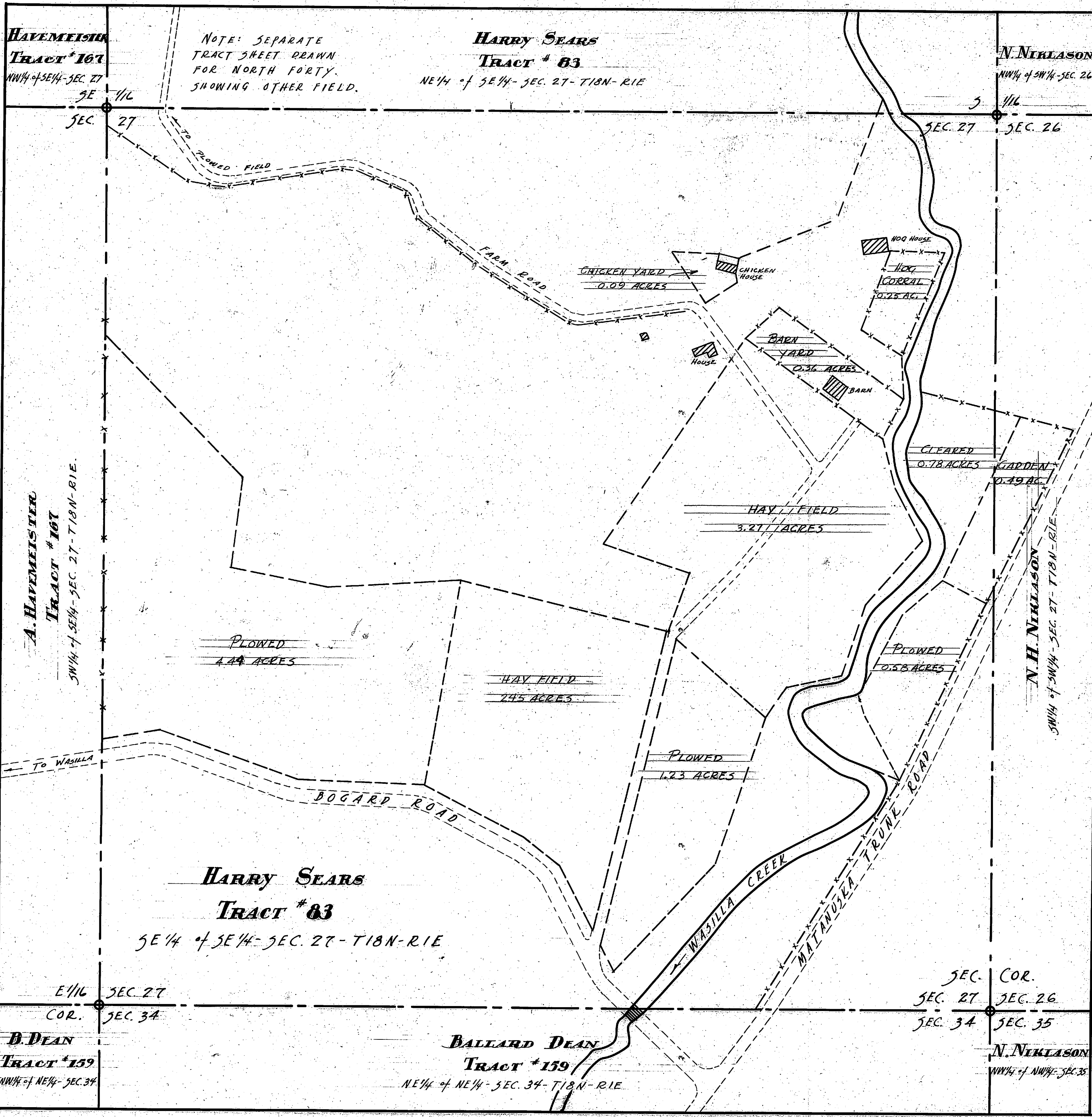
N. H. NIKLASON
SW 1/4 of SW 1/4 - SEC. 27 - T18N-R1E

HARRY SEARS
TRACT # 83
SE 1/4 of SE 1/4 - SEC. 27 - T18N-R1E

BALLARD DEAN
TRACT # 159
NE 1/4 of NE 1/4 - SEC. 34 - T18N-R1E

B. DEAN
TRACT # 159
NW 1/4 of NE 1/4 - SEC. 34

N. NIKLASON
NW 1/4 of NW 1/4 - SEC. 35



IMPROVEMENTS ON TRACT # 83

ORIGINAL SURVEY - OCTOBER 21, 1936
Sheet No. 1
REMARKS
This includes sheet No. 1

Scale 1" = 100'

JURVEYED	ACRES UNDER FELL TREES BRUSHED	ACRES FELL TREES REMOVED	ACRES STUMPED	ACRES CLEANED UP	ACRES PLOWED	ACRES MARE AFTER PLOWING	ACRES CLE. AFTER PLOWING	ACRES GARDEN	ACRES BARB WOVEN FENCE	LINEAR FEET FENCE	TOTALS
Oct 21, 1936				0.78	9.73	5.72	0.49	7650	280	16.72	7930