

A.R.R.C.

MATANUSKA VALLEY PROJECT

PROPOSED SUBDIVISION OF PLOWED AREA

TRACT # 36
 PREVIOUSLY HELD BY T. GIBLIN
S-E 1/4 OF N-W 1/4 SEC. 18-T17N-R2E
 DRAWN BY ROBERT ABERNETHY
 LOCATION ENGINEER - ANTON ANDERSON
 PALMER, ALASKA - APRIL 19, 1936
 SCALE 1 INCH = 100 FT

TRACT # 34
 EINER HOUSEBY FIELD # 3
 2.221 ACRES
 NORTH of E-W LINE

FIELD # 4
 0.969 ACRES
 NORTH of E-W LINE

FIELD # 4
 2.969 ACRES
 SOUTH of E-W LINE

FIELD # 3
 6.933 ACRES
 SOUTH of E-W LINE

FIELD # 2
 2.720 ACRES
 STEEP BOTTOM LAND

FIELD # 1
 18.538 ACRES

1/16 COR. NW 18

EAST & WEST 1/16 LINE

1/16 COR. NE 18

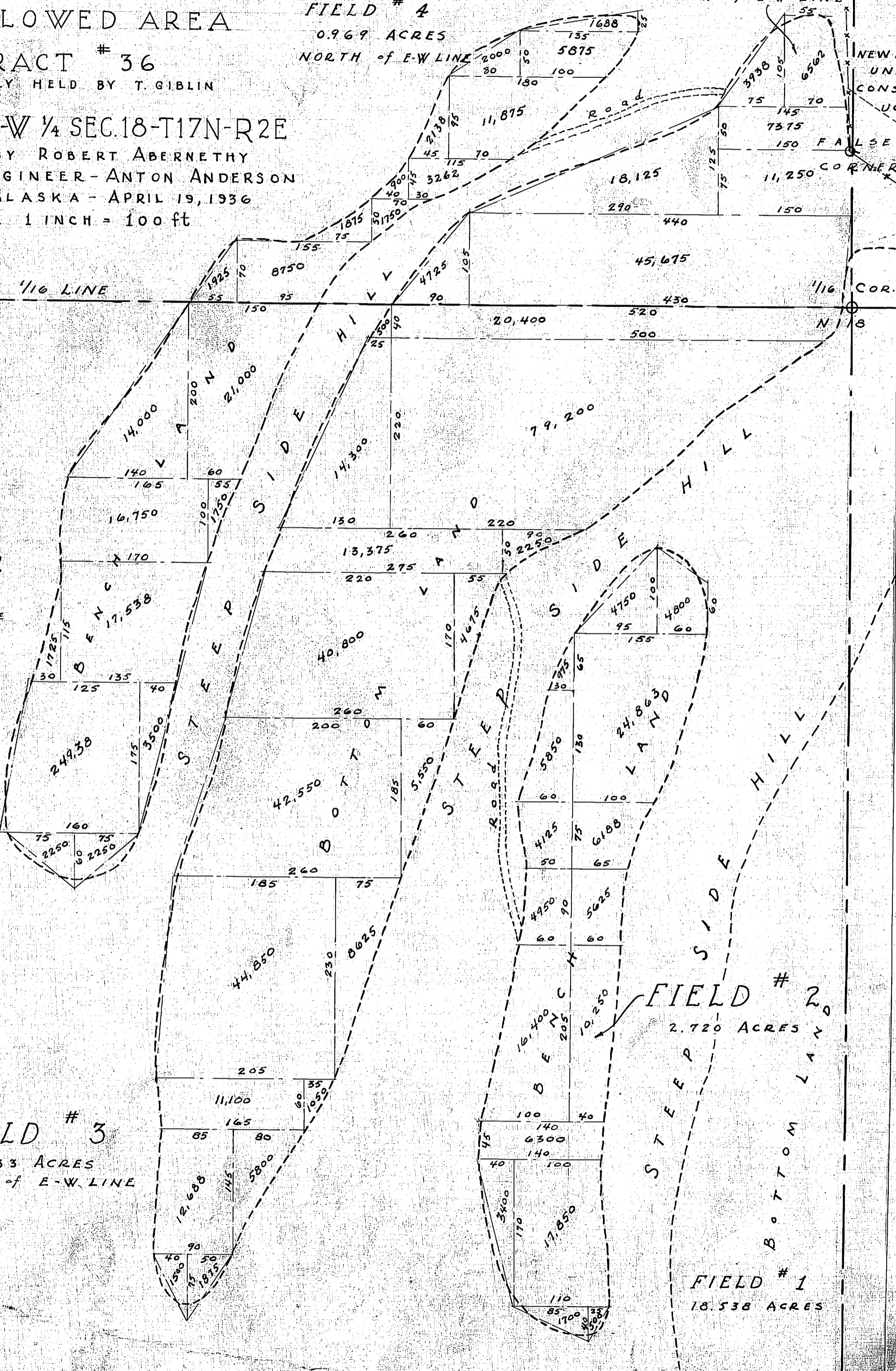
1/16 COR. W 18

1/4 COR.

20 ACRES RECENTLY PURCHASED FROM CARL E. MARTIN FOR PIT CENTER S18

NEW ROAD UNDER CONSTRUCTION

FALSE CORNER



16" x 20 1/2" - 23 1/2 x 11