

**OPEN**  
SW 1/4 of NW 1/4 - SEC. 16  
W 1/16  
SEC. 16

**JAMES JOHNSON**  
TRACT # 22  
SE 1/4 of NW 1/4 - SEC. 16 - T17N-R1E

**WINCHESTER**  
SW 1/4 of NE 1/4 - SEC. 16  
O 1/4  
SEC. 16

**OPEN**  
TRACT # 23  
NW 1/4 of SW 1/4 - SEC. 16 - T17N-R1E

**FRED LARSON**  
TRACT # 24  
NE 1/4 of SW 1/4 - SEC. 16 - T17N-R1E

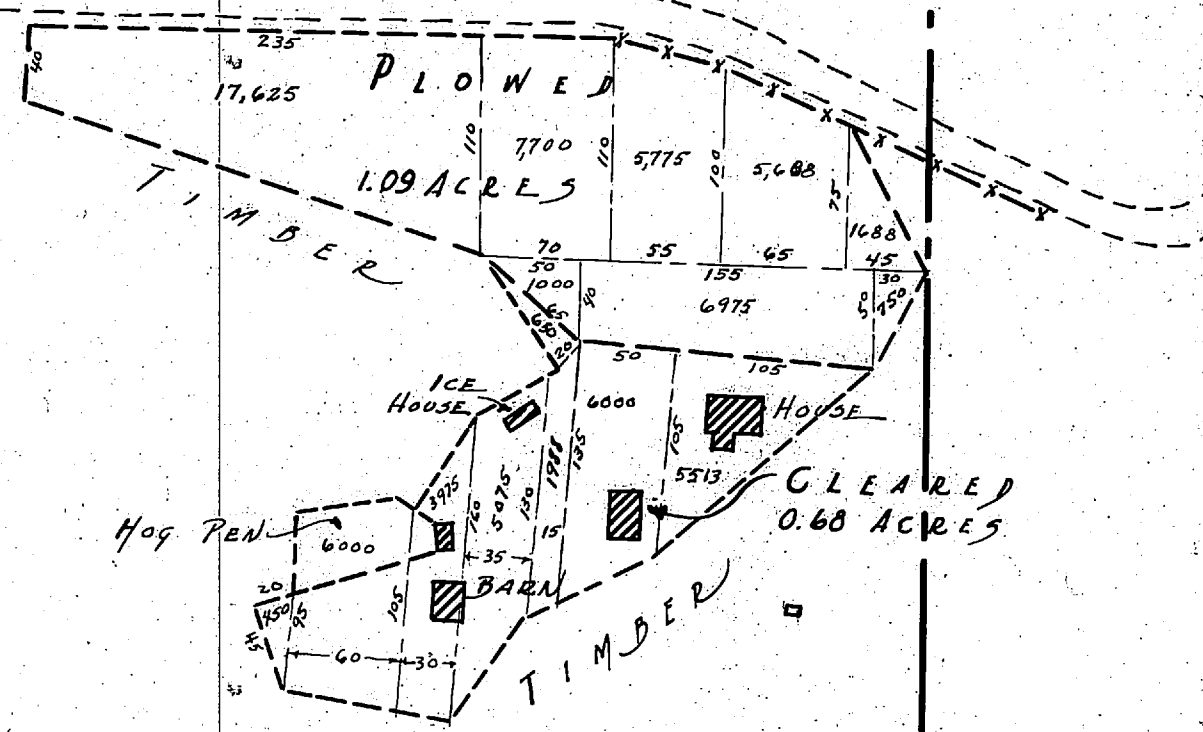
**OTTO NELSON**  
TRACT # 27  
NW 1/4 of SE 1/4 - SEC. 16 - T17N-R1E

**OPEN**  
TRACT # 25  
SW 1/4 of SW 1/4 - SEC. 16  
SW 1/16  
SEC. 16

**JOHN CHURCH**  
TRACT # 26  
SE 1/4 of SW 1/4 - SEC. 16 - T17N-R1E

**H. JENSON**  
TRACT # 29  
SW 1/4 of SE 1/4 - SEC. 16  
S 1/16  
SEC. 16

WASHILLA - MONTAN'S LAKE ROAD



Original Survey Sept. 12, 1936  
Scale 1"=100'

SURVEYED	ACRES UNDER BRUSH SLASHED	ACRES FELL TREES REMOVED	ACRES STUMPED	ACRES CLEANED UP	ACRES PLOWED	ACRES AFTER PLOWING	ACRES CROPPED	ACRES GARDEN	LINEAR FEET FENCE		TOTALS		REMARKS
									BARB WOVEN	POLE	LAND	FENCE	
Sept. 12, 1936			0.68		1.09				240'		1.77	2.40	

IMPROVEMENTS ON TRACT # 24