

NW 1/4

N 1/4

SEC. 16

SEC. 16

*James Johnston*

*SW 1/4 of NE 1/4*

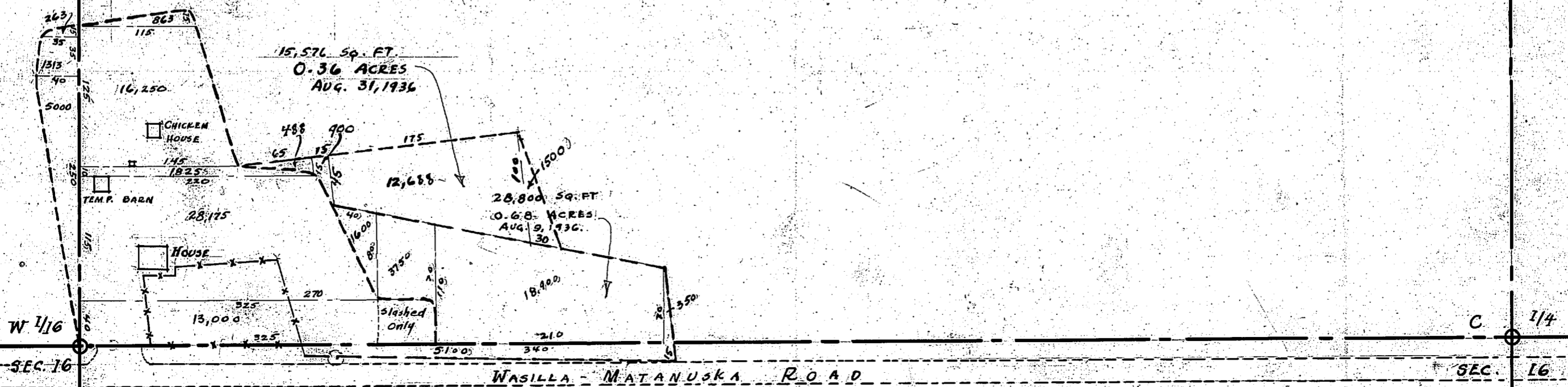
*Section 16*

*Tract # 22*

*ACRES GARDEN = 0.24*

*PART CLEARED & SLASHED = 1.29*

*JULY 22, 1936*



*WASILLA - MATANUSKA ROAD*

*Fred Larson - Tract # 24*