

R. GRIFFITH
SE 1/4 of NE 1/4 - SEC. 35

SCHOOL LAND
SW 1/4 of NW 1/4 - SEC. 36 - T18N - R1E

SCHOOL LAND
SE 1/4 of NW 1/4 - SEC. 36

1/4 COR.
SEC. 35 SEC. 36

N 1/16
SEC. 36

OPEN LAND
NE 1/4 of SE 1/4 - SEC. 35 - T18N - R1E

C. G. ELLIOT
TRACT # 200
NW 1/4 of SW 1/4 - SEC. 36 - T18N - R1E

BURT GARTON
TRACT # 188
NE 1/4 of SW 1/4 - SEC. 36 - T18N - R1E

ORIGINAL SURVEY - OCTOBER 22, 1936
SCALE 1" = 100'

IMPROVEMENTS ON TRACT # 200

	ACRES SURVEYED UNDER - BROUSHED	ACRES FELL TREES REMOVED	ACRES STUMPED	ACRES CLEANED UP	ACRES PLOWED	ACRES ANDED AFTER PLOWING	ACRES CROPPED GARDEN	ACRES GARDEN	LINEAR FEET FENCE	TOTALS	
										BARBED WOVEN POLE	LAND FENCE
SECT 22 - 36					13.7		0.32			169	169

REMARKS

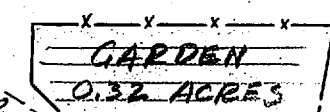
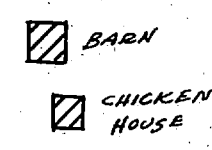
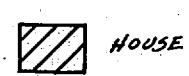
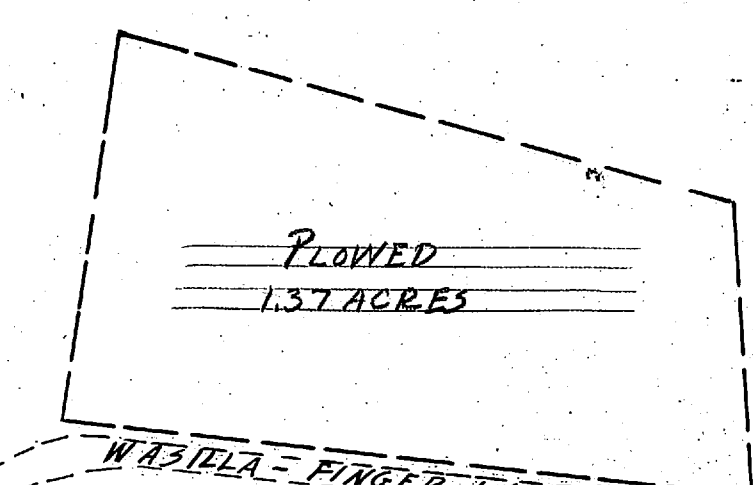
1/16
SEC. 35 SEC. 36

OPEN LAND
SE 1/4 of SE 1/4 - SEC. 35

C. G. ELLIOT
TRACT # 200
SW 1/4 of SW 1/4 - SEC. 36 - T18N - R1E

SW 1/16
SEC. 36

B. GARTON
TRACT # 188
SE 1/4 of SW 1/4 - SEC. 36



WASILLA - FINGER LANE - PALMER - BEAD

TO PALMER - SE 1/4 of SW 1/4 - SEC. 36