

IM SANDVICK
TRACT # 47
NE 1/4 of NW 1/4 Sect 26
T17N-R2E NW 1/6

LORIN McKECHNIE
TRACT # 199
SE 1/4 of NW 1/4 - S. 26 - T17N-R2E

OPEN

NE 1/4 of SW 1/4 SECT 26
T17N-R2E

W 1/6 C

SEC. 26

SEC. 26

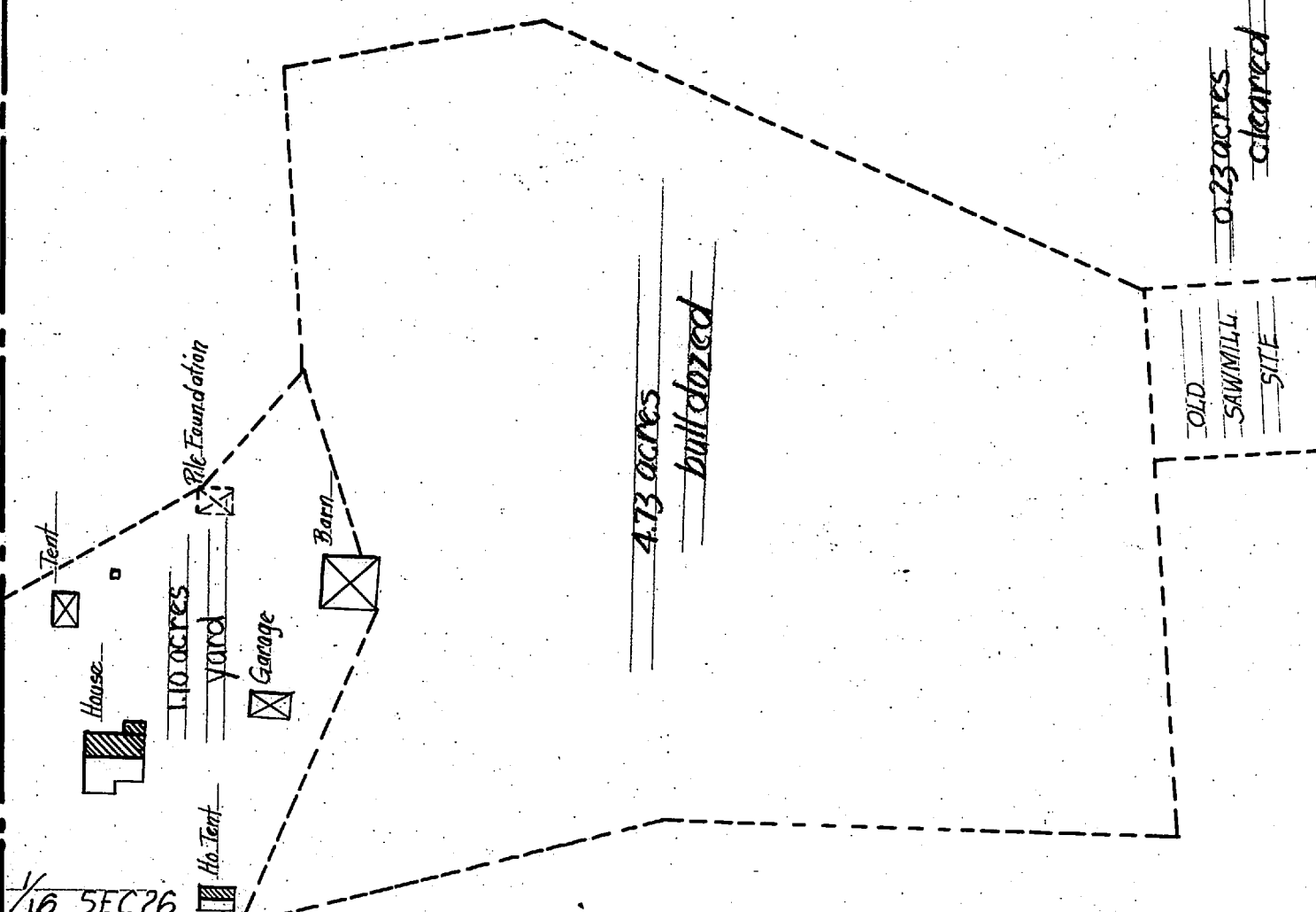
LORIN McKECHNIE
TRACT # 199
SW 1/4 of NW 1/4 - SEC. 20 T17N-R2E

IM SANDVICK
TRACT # 47

NW 1/4 of NW 1/4 - SEC. 26 - T17N-R2E

RESERVE

NW 1/4 of SW 1/4 - SEC. 26 - T17N-R2E



VINCENI STEPHAN
TRACT # 179
NE 1/4 of NE 1/4 S. 27
T17N-R2E

LEONARD BERGAN
TRACT # 181
SE 1/4 of NE 1/4 - S. 27 - T17N-R2E

LEONARD BERGAN
TRACT # 181
NW 1/4 of NE 1/4 of SE 1/4
S. 27 - T17N-R2E

1/4 COR.

SEC. 26

SEC. 27

ORIGINAL SURVEY - NOVEMBER 14, 1936

IMPROVEMENTS ON TRACT # 199

SCALE 1" = 100'

SURVEYED	NOV. 14, 1936	ACRES UNDER BRUSH	ACRES FELL TYPES REMOVED	ACRES ACRES STUMPED UP	ACRES ACRES CLEANED UP	ACRES ACRES PLANTED	ACRES ACRES AND AFTER PLANTING	ACRES ACRES CROPPED	ACRES ACRES GARDEN	LINEAR FEET FENCE		TOTALS	REMARKS	
										BARB	WOVEN			POLE
					6.06						1000			1000'
												6.06		Fence Poles Only