

SCHOOL LAND
SW¹/₄ of NW¹/₄-SEC. 36

SCHOOL LAND
SE¹/₄-of NW¹/₄-SEC. 36-T18N-R2E

SCHOOL LAND
SW¹/₄ of NE¹/₄-SEC. 36

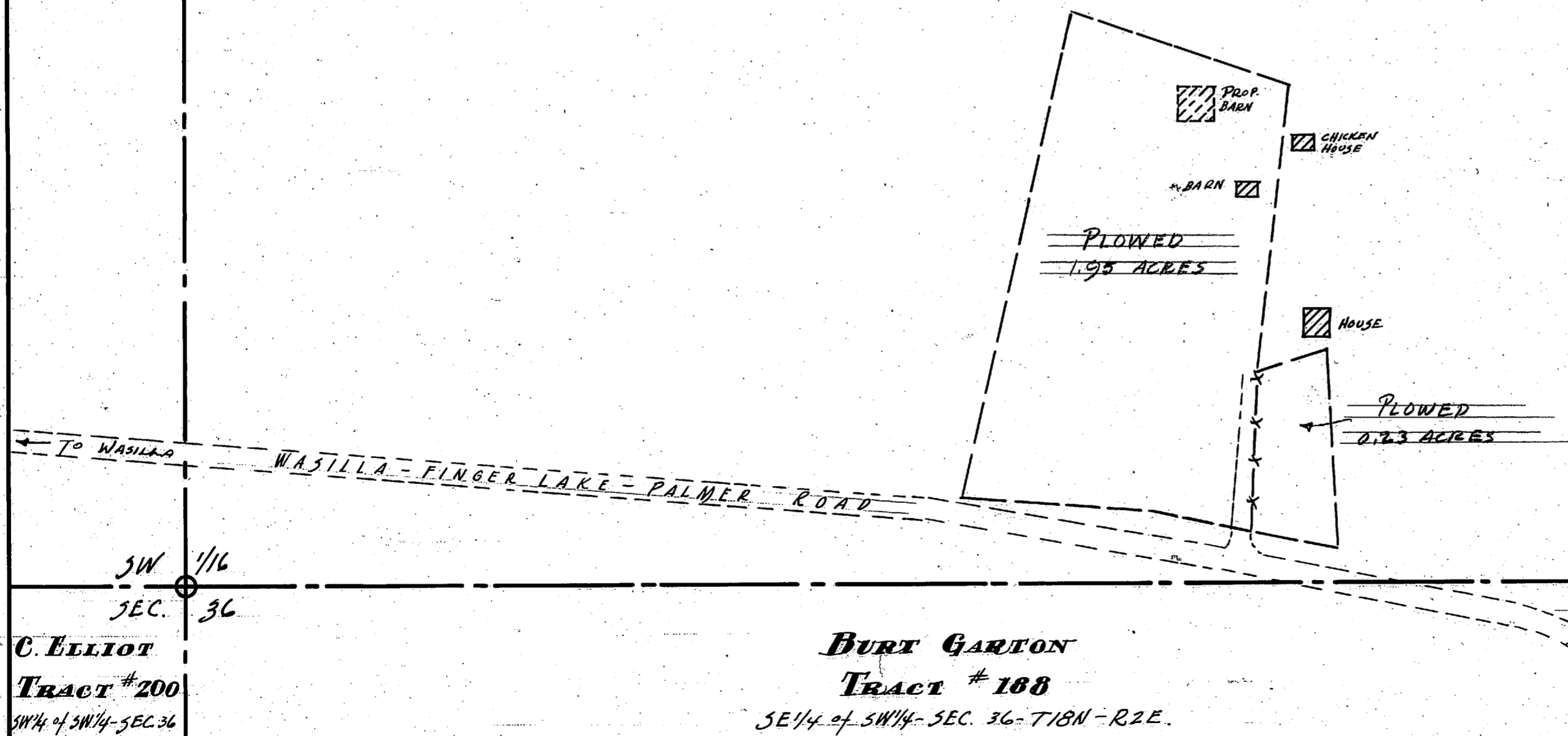
W 1/16
SEC. 36

C 1/4
SEC. 36

BURT GARTON
TRACT # 188
NE¹/₄ of SW¹/₄-SEC. 36-T18N-R2E

C. G. ELLIOT
TRACT # 200
NW¹/₄ of SW¹/₄-SEC. 36-T18N-R2E

LAWRENCE ARNDT
TRACT # 190
NW¹/₄ of SE¹/₄-SEC. 36-T18N-R2E



C. ELLIOT
TRACT # 200
SW¹/₄ of SW¹/₄-SEC. 36

BURT GARTON
TRACT # 188
SE¹/₄ of SW¹/₄-SEC. 36-T18N-R2E

L. ARNDT
TRACT # 190

ORIGINAL SURVEY - OCTOBER 22, 1936
Scale 1"=100'

IMPROVEMENTS ON TRACT # 188

							TOTALS	REMARKS		
JURICED	ACRES UNDER BRUSH	ACRES UNDER FELL TREES SLASHED	ACRES STUMPED	ACRES CLEARED UP	ACRES PLOWED	ACRES GARDEN	ACRES		LINEAR FEET FENCE	LAND
					2.18			200	2.18	200'

06/22-36