

HARRISON'S HOUSE

Victor Johnson  
Tract # 97  
SW 1/4 of SW 1/4 - SEC. 5 - T18N - R2E

HARRISON  
SE 1/4 of SW 1/4 - SEC. 32 - T18N - R2E

J. J. Bugge  
SW 1/4 of SE 1/4 - SEC. 32 - T18N - R2E

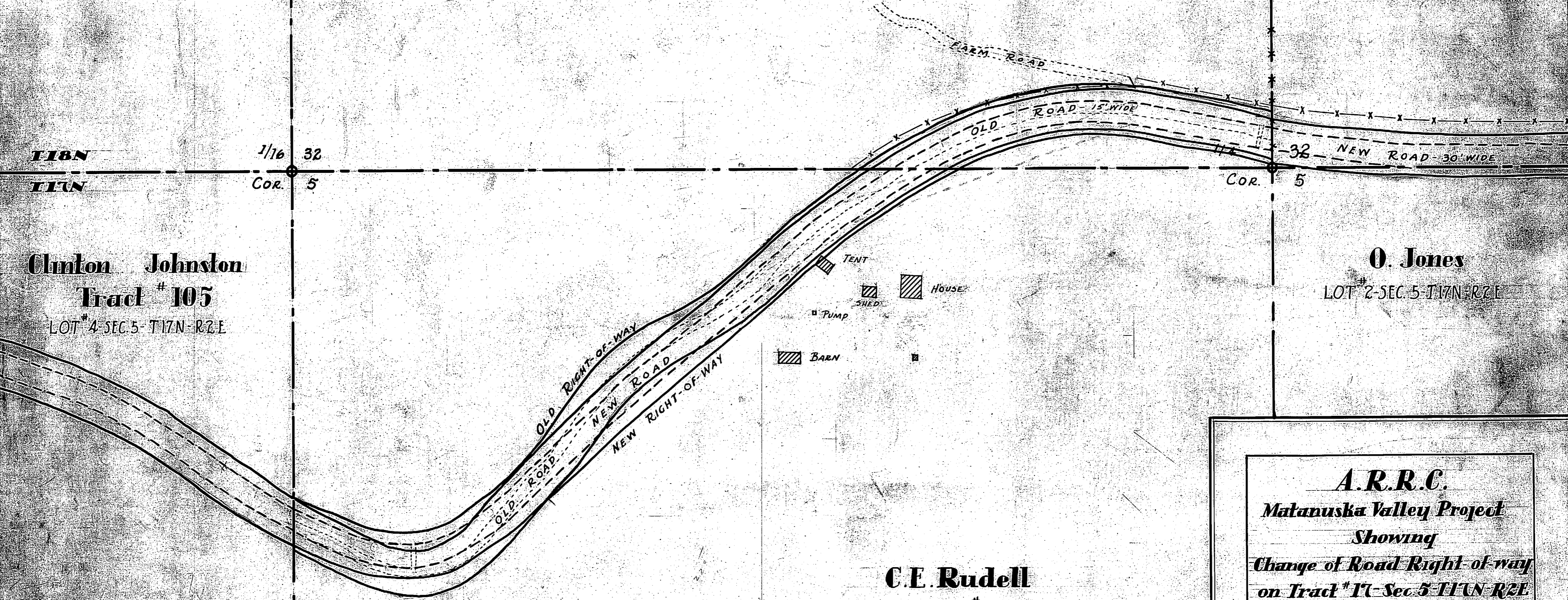
T18N  
T17N  
1/16 32  
Cor. 5

32  
COR. 5

Clinton Johnston  
Tract # 105  
LOT # 4 - SEC. 5 - T17N - R2E

O. Jones  
LOT # 2 - SEC. 5 - T17N - R2E

TENT  
HOUSE  
PUMP  
SHED  
BARN



C.E. Rudell  
Tract # 17  
NE 1/4 of NW 1/4 - SE 1/4 of NW 1/4 - SEC. 5 - T17N - R2E

**A.R.R.C.**  
**Matanuska Valley Project**  
**Showing**  
**Change of Road Right-of-way**  
**on Tract # 17 - Sec. 5 - T17N - R2E**  
**Scale 1 inch = 100 ft**  
**Anton Anderson - Location Engineer**  
**Drawn by Robert Abernethy**  
**Palmer, Alaska - Sept. 8, 1936**  
**Plowed ground invaded - 0.3 Acres**  
**or 120' x 120'**