

Tom Voyta
TRACT # 154
NW1/4 of SE1/4 - SEC. 14

NEIL MILLER
TRACT # 155
NE1/4 of SE1/4 - SEC. 14 - T18N - R1E

KLINEPIER
TRACT # 158
PART of NW1/4 of SW1/4
COR.

MARTIN NOVAK
TRACT # 157
SE1/4 of SE1/4 - SEC. 14 - T18N - R1E.

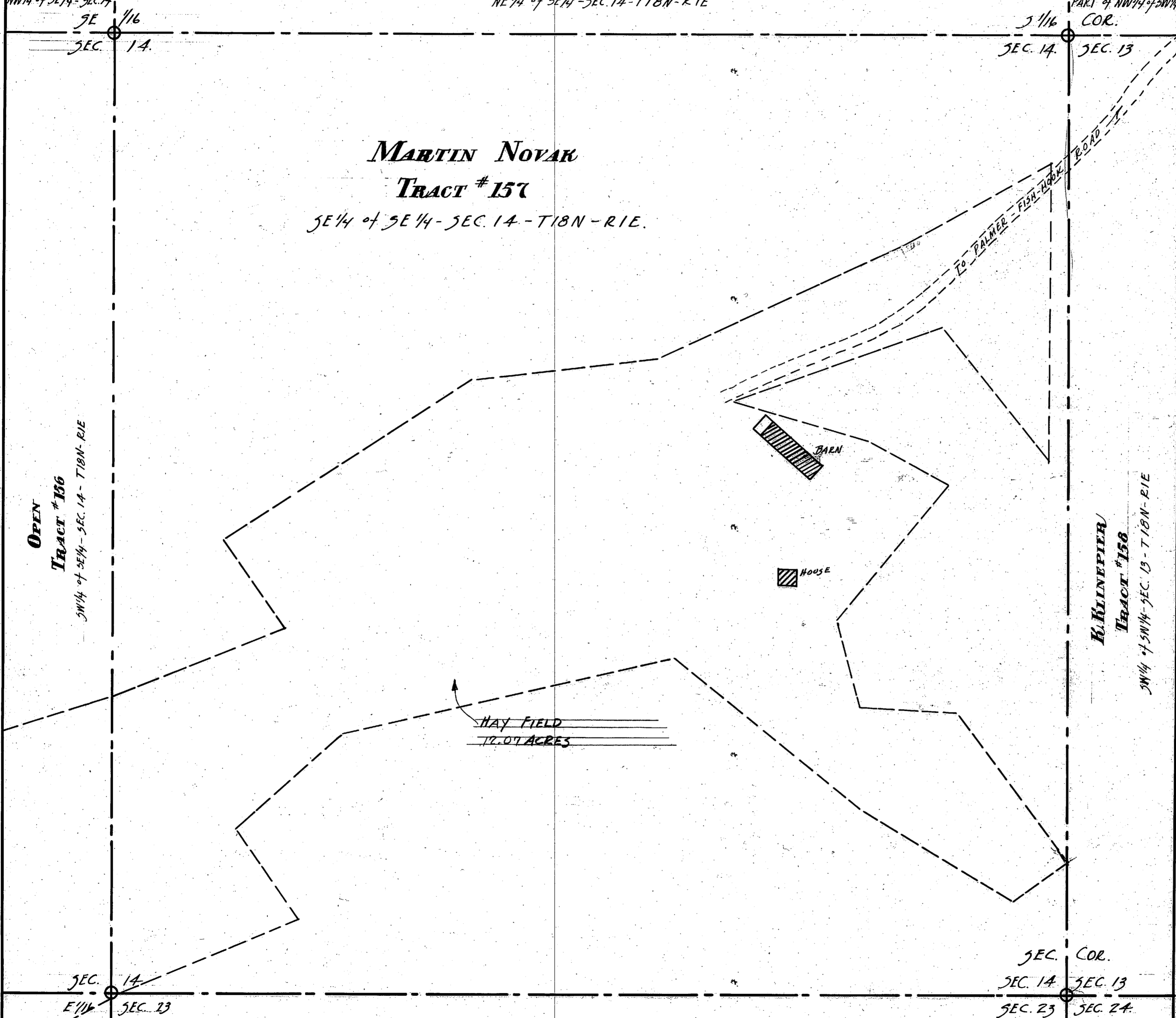
OPEN
TRACT # 156
SW1/4 of SE1/4 - SEC. 14 - T18N - R1E

KLINEPIER
TRACT # 158
SW1/4 of SW1/4 - SEC. 13 - T18N - R1E

OPEN
NW1/4 of NE1/4 - SEC. 23

MARTIN NOVAK
TRACT # 157
NE1/4 of NE1/4 - SEC. 23 - T18N - R1E.

A. TRENT
NW1/4 of NW1/4 - SEC. 24



Scale 1" = 100'

IMPROVEMENTS ON TRACT # 157 ~ ORIGINAL SURVEY - OCTOBER 20, 1936

SURVEYED OCT. 20, 1936	ACRES UNDER- BRUSHED	ACRES FELL SLASHED	ACRES TREES REMOVED	ACRES STUMPED	ACRES CLEANED UP	ACRES PLOWED	ACRES AFTER PLOUGHING	ACRES CROPPED	ACRES GARDEN	LINEAR FEET FENCE	TOTALS	REMARKS	
												LAND	FENCE
						12.07				1320	12.07	1320	Mostly cropped previously