

J.W. SWANK
NW 1/4 of SW 1/4 - SEC. 29

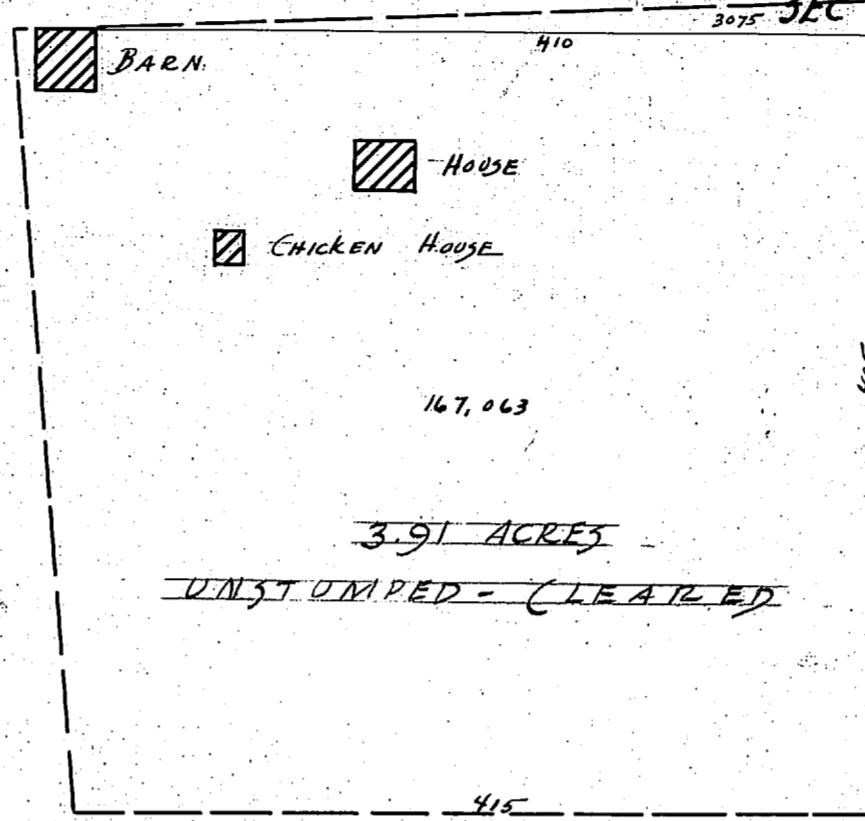
HARRY JENSEN
TRACT # 113
NE 1/4 of SW 1/4 - SEC. 29 - T18N - R2E

J.M. HADY
NW 1/4 of SE 1/4 - SEC. 29

SW 1/16
SEC. 29

NEW ROAD
3075' SEC. 29

SE 1/16
SEC. 29



FERBER BAILEY
TRACT # 152
N 1/2 of SE 1/4 - SEC. 29 - T18N - R2E

J.W. SWANK
SW 1/4 of SW 1/4 - SEC. 29 - T18N - R2E

JACK BURDON
TRACT # 114
SE 1/4 of SW 1/4 - SEC. 29 - T18N - R2E

CHRIS ANDERSON
TRACT # 113
S 1/2 of SE 1/4 - SEC. 29 - T18N - R2E

W SEC. 29
1/16 SEC. 32

FRED ROTZ
TRACT # 92
NW 1/4 of NW 1/4 - SEC. 32

FRANK RING
TRACT # 93
NE 1/4 of NW 1/4 - SEC. 32 - T18N - R1E

1/4 SEC. 29
(COR.) SEC. 32

C. SJODIN
TRACT # 98
NW 1/4 of NE 1/4 - SEC. 32

ORIGINAL SURVEY - SEPT. 29, 1936
Scale 1" = 100'

IMPROVEMENTS ON TRACT # 114

REMARKS

SURVEYED	ACRES UNDER-BRUSHED	ACRES FELL-TREES	ACRES STUMPED	ACRES CLEANED UP	ACRES PLOWED	ACRES ANNEAFTER PLOWING	ACRES CROPPED	ACRES GARDEN	ACRES LINEAR FEET FENCE		TOTALS	
									BARB	WOVEN POLE		LAND
Sept 29-36		3.91							450	391	450	