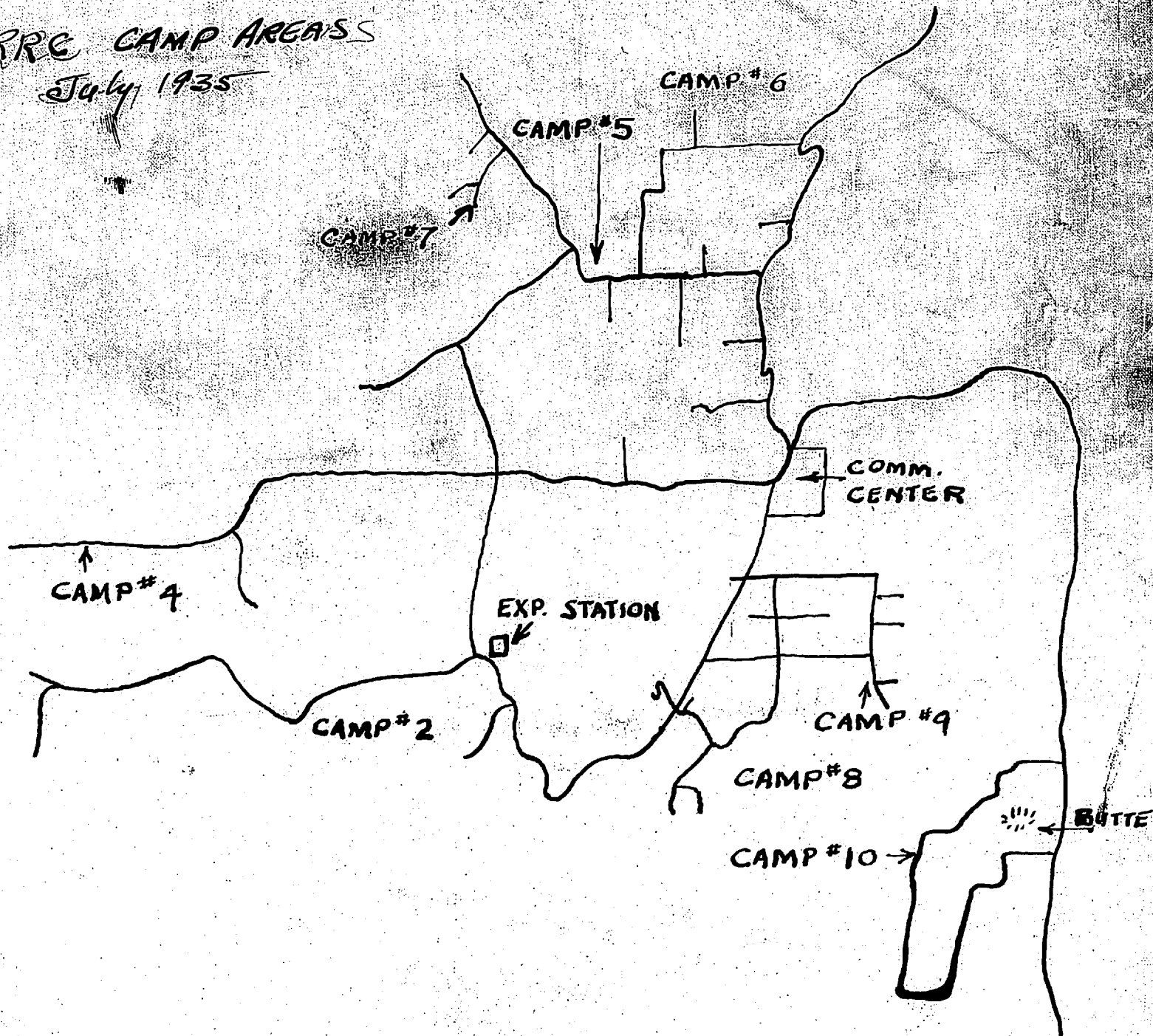


ARRC CAMP AREAS
July 1935



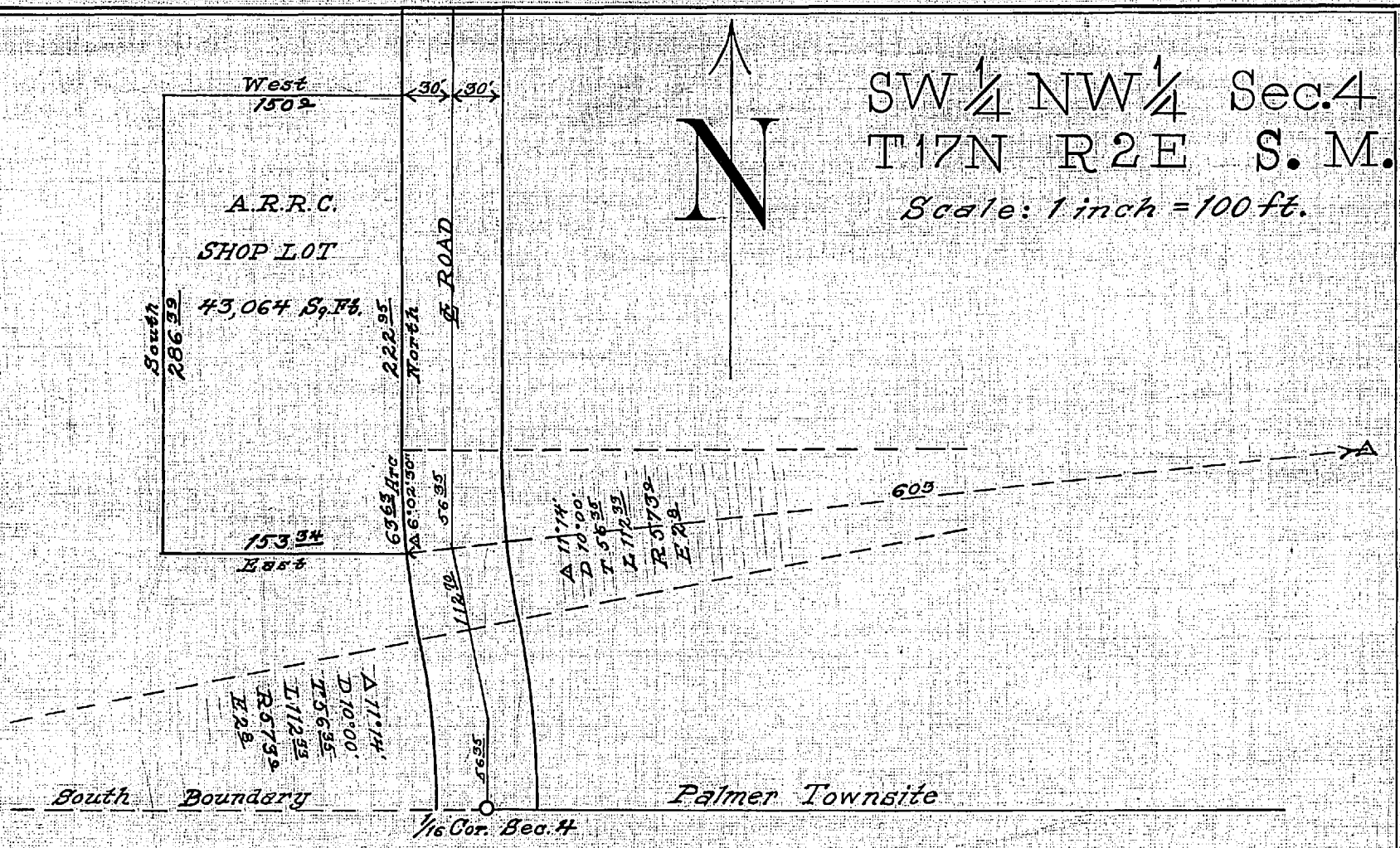
A.R.R.C. SHOP LOT PALMER-ALASKA.

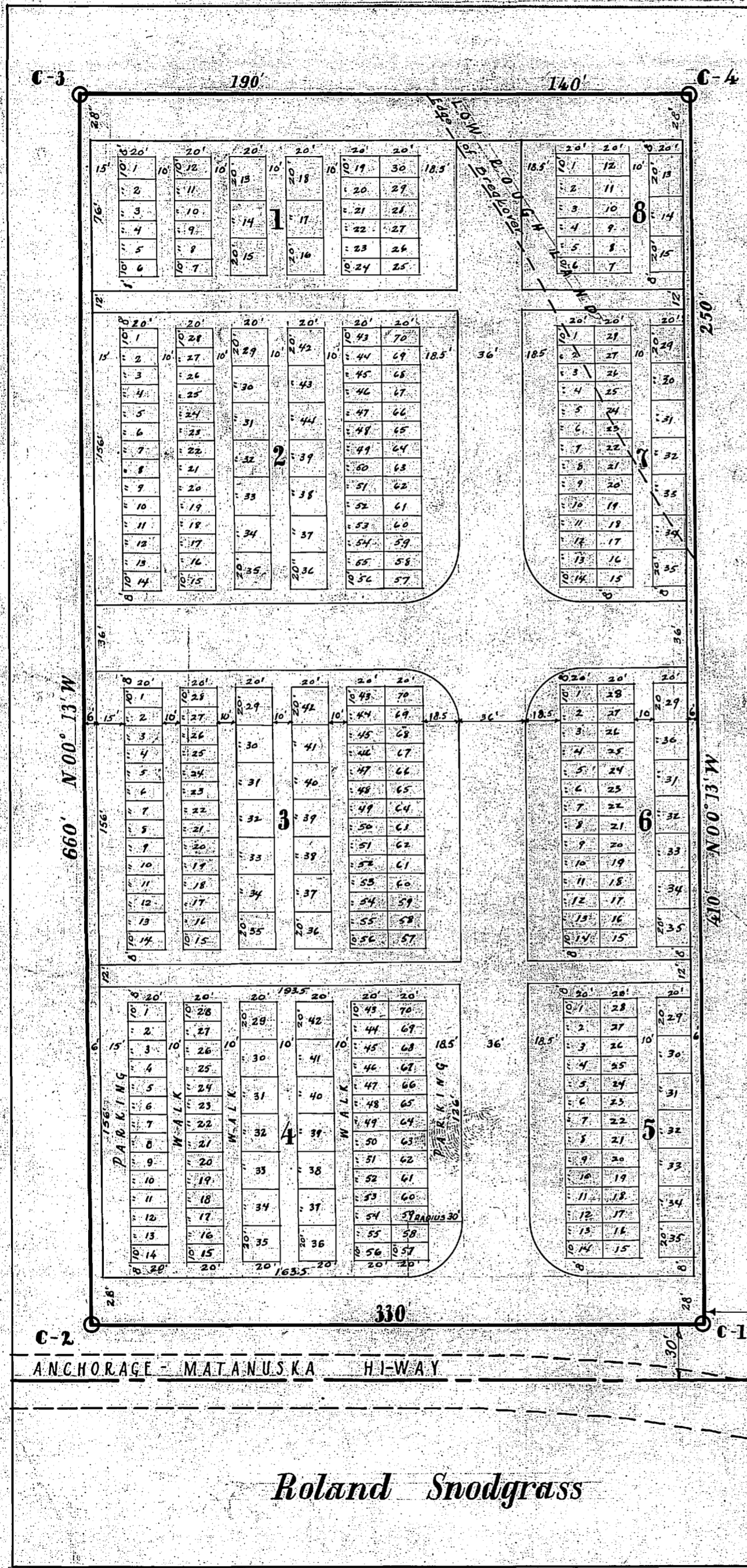
Surveyed by _____

Date _____

Approved by _____ General Manager A.R.R.C.

Drawn by _____





A.R.P.C.
 Matanuska Valley Project
 Subdivision of Cemetery Lot
 SE 1/4 of NE 1/4 - Sec. 33 - T18N-R2E
 Scale 1 inch = 60 ft
 Anton Anderson - Location Engineer
 Drawn by Robert Abernethy
 Palmer, Alaska
 Aug. 4, 1936
 Approved _____

A.J. Swanson
 SE 1/4 of NE 1/4
 SECTION 33
 T18N-R2E

*Checked
 See plat*

Roland Snodgrass