

OPEN
SW 1/4 of NW 1/4 - SEC. 16

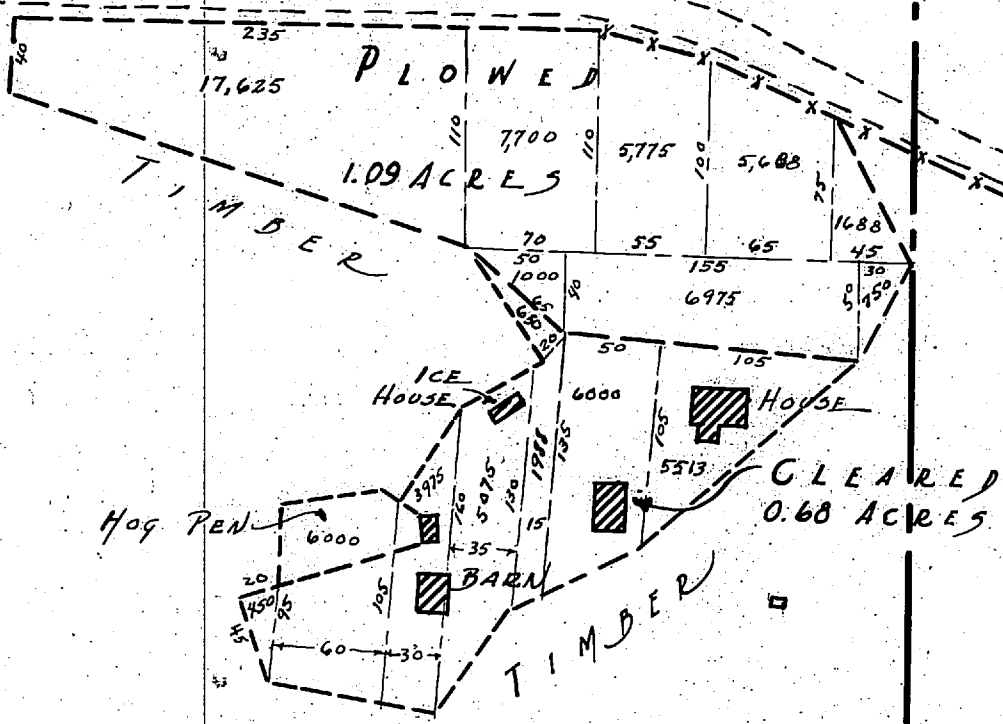
JAMES JOHNSON
TRACT # 22
SE 1/4 of NW 1/4 - SEC. 16 - T17N-R1E

WINCHESTER
SW 1/4 of NE 1/4 - SEC. 16

W 1/16
SEC. 16

E 1/16
SEC. 16

WASILLA - MATTAN'S BLK ROAD



OPEN
TRACT # 23
NW 1/4 of SW 1/4 - SEC. 16 - T17N-R2E

FRED LARSON
TRACT # 24
NE 1/4 of SW 1/4 - SEC. 16 - T17N-R1E

OTTO NELSON
TRACT # 27
NW 1/4 of SE 1/4 - SEC. 16 - T17N-R1E

SW 1/16
SEC. 16

S 1/16
SEC. 16

OPEN
TRACT # 25
SW 1/4 of SW 1/4 - SEC. 16

JOHN CHURCH
TRACT # 26
SE 1/4 of SW 1/4 - SEC. 16 - T17N-R1E

H. JENSON
TRACT # 29
SW 1/4 of SE 1/4 - SEC. 16

IMPROVEMENTS ON TRACT # 24 ~ Original Survey Sept. 12, 1936 Scale 1"=100'

SURVEYED Sept. 12, 1936	ACRES UNDER-BRUSHED	ACRES FELL-TREES SLASHED	ACRES TREES REMOVED	ACRES STUMPED	ACRES CLEANED UP	ACRES PLOWED	ACRES AFTER PLOWING	ACRES CROPPED	ACRES GARDEN	ACRES	LINEAR FEET FENCE	TOTALS	REMARKS	
											BARB WOVEN POLE	LAND FENCE		
				0.68		1.09					240'	1.77	2.40	