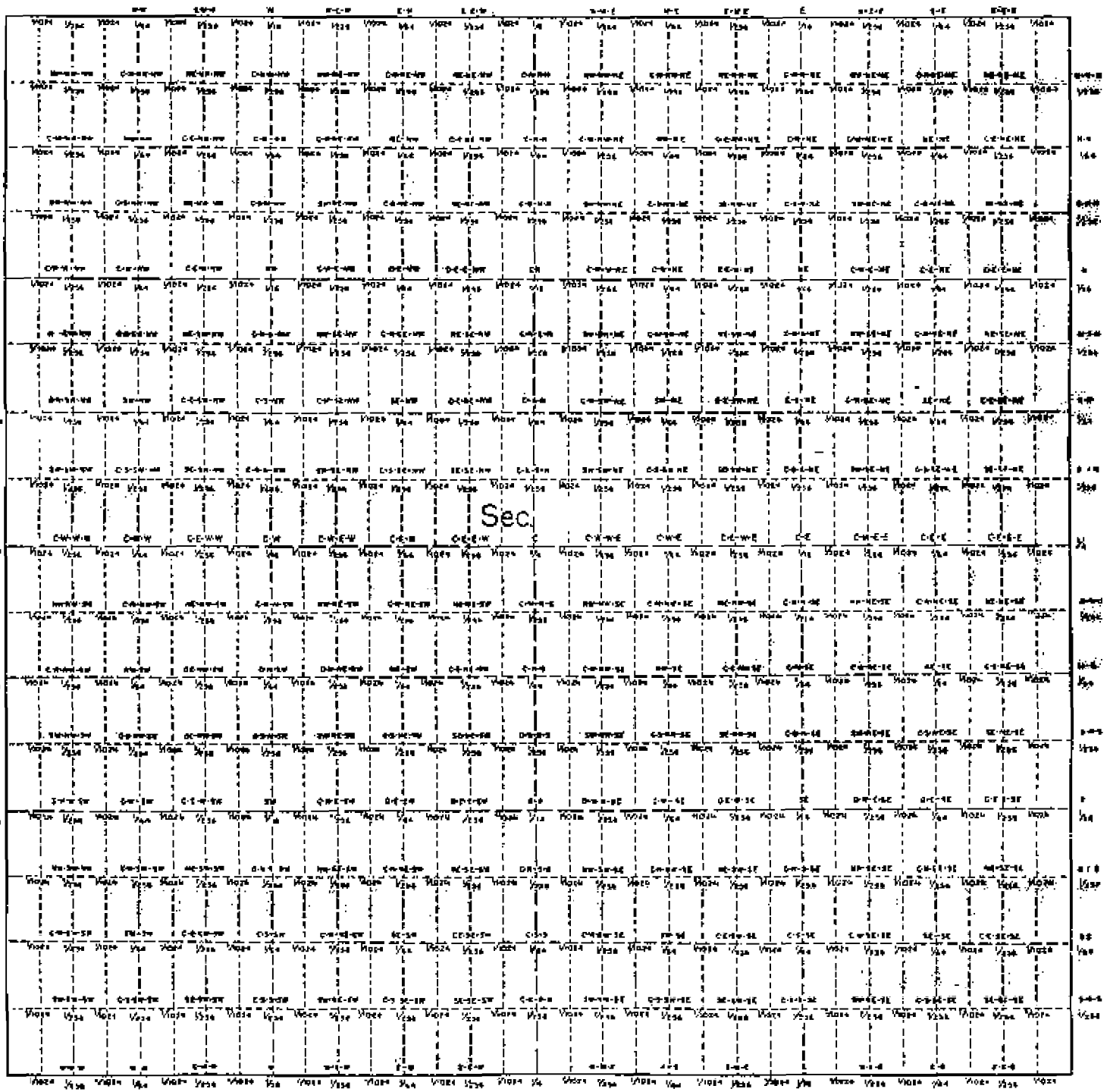


1162  
1950

UNITED STATES  
DEPARTMENT OF THE INTERIOR  
BUREAU OF LAND MANAGEMENT

MARKINGS FOR CORNERS ON SUBDIVISION OF SECTION LINES

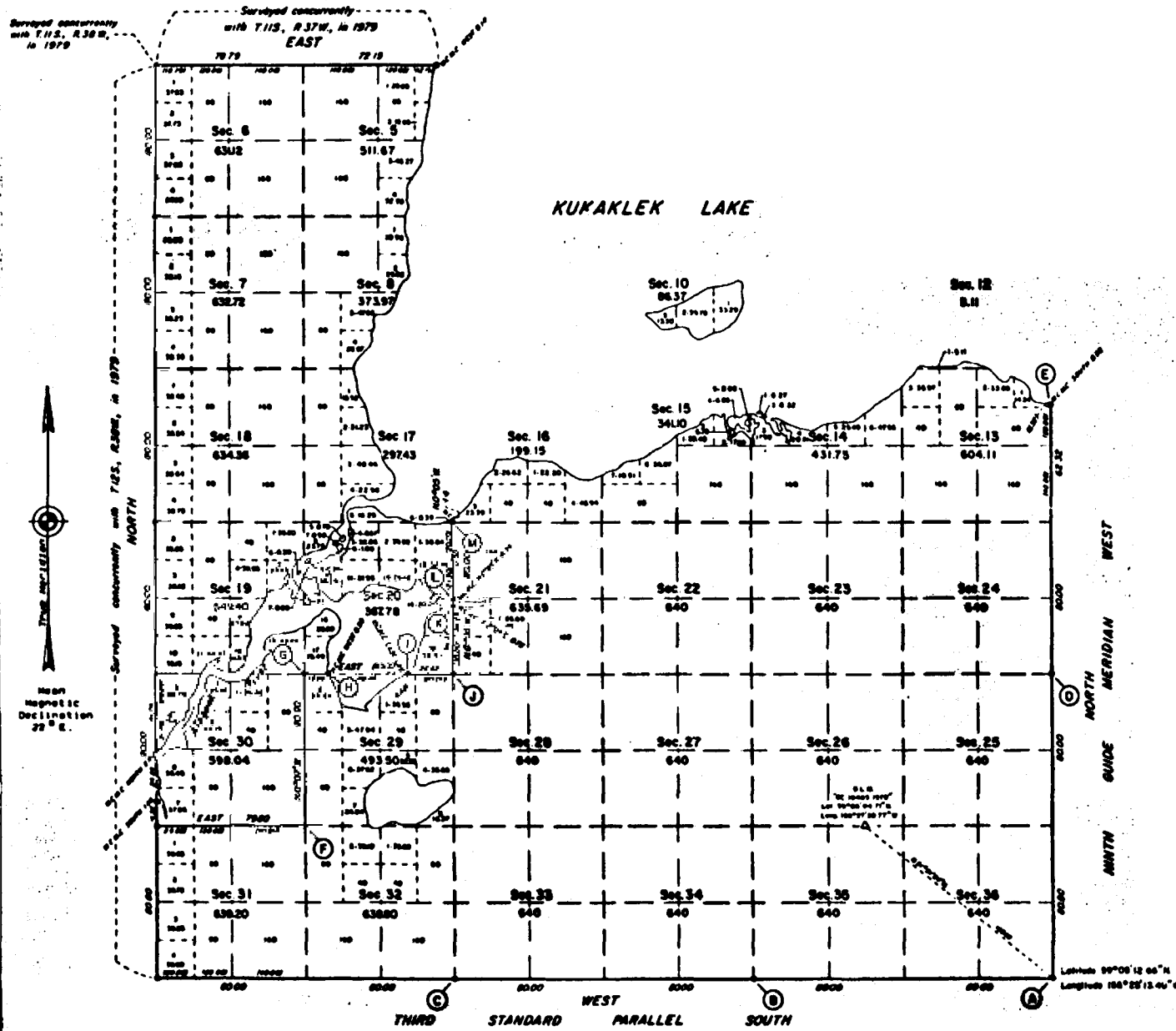


Section numbers to be added to markings shown.  
If 1024 corners are established they will be marked 1024 only.  
See section 274, Manual of Surveying Instructions.

March 31, 1950.



# TOWNSHIP 12 SOUTH, RANGE 37 WEST, OF THE SEWARD MERIDIAN, ALASKA



This plat and the field notes of the survey monumentation provide the entire survey record.

This plat represents the survey of the Third Standard Parallel South along the south boundary, the Ninth Guide Meridian West along the fractional east boundary, and a portion of the subdivisional lines of Township 12 South, Range 37 West, Seward Meridian, Alaska. The remainder of the subdivisional lines of the township were surveyed by protraction as shown on this plat.

This survey was executed by Stanley E. King, Cadastral Surveyor, May 18 through August 7, 1979, in accordance with the specifications set forth in the Manual of Surveying Instructions, 1973, Special Instructions for Group No. 351, Alaska, dated October 3, 1978, approved May 10, 1979, and Assignment Instructions dated May 10, 1979.

Corner positions of this survey were determined by Airborne Control Survey method, utilizing control stations established by the U.S. Coast and Geodetic Survey, Bureau of Land Management, and U.S. Army Corps of Engineers. Monuments were set at protracted corner positions based on official Bureau of Land Management protraction diagrams.

The mean magnetic declination shown on this plat was obtained from U.S. Geological Survey quadrangle map "ILIAMMA (A-7)," Alaska, 1951 edition, with minor revisions in 1969.

The hydrography shown on this plat identifies the meanders along the ordinary high water line of water bodies segregated from the land area. The meanders are photogrammetrically interpreted and digitized from color infrared and rectified black and white aerial photography flown in July and August, 1982 by the National Aeronautical Space Administration. The digital meander line data pictorially represent the meanders used to calculate the lot areas shown on the plat and are on file in the BLM Alaska Automated Land Records System (AALRS).

This survey encompasses all lands; including islands, islets, and rocks above the line of ordinary high water which were in existence at the time of survey whether or not they are shown on this plat.

UNITED STATES DEPARTMENT OF THE INTERIOR  
BUREAU OF LAND MANAGEMENT  
Anchorage, Alaska

This plat is strictly conformable to the approved field notes, and the survey, having been correctly executed in accordance with the requirements of law and the regulations of this Bureau, is hereby accepted.

For the Director

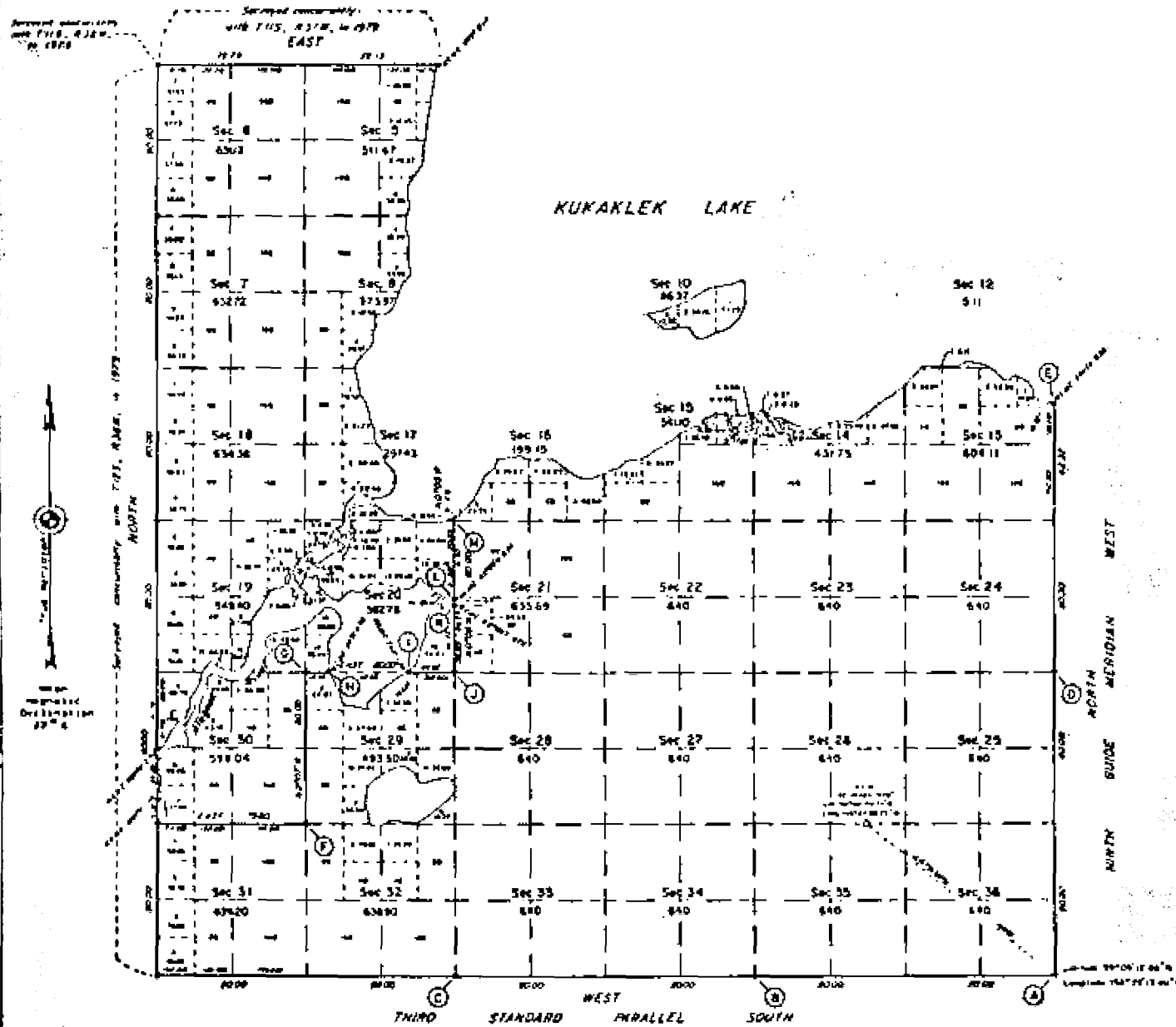
*James R. ...* Sept 3, 1985  
Date

Deputy State Director for Cadastral Survey,  
Alaska

Latitude 66°06'12.00"N  
Longitude 156°28'13.00"W

Area Surveyed: 15,711.37 Acres

# TOWNSHIP 12 SOUTH, RANGE 37 WEST, OF THE SEWARD MERIDIAN, ALASKA



This plat and the field notes of the survey monumentation provide the entire survey record.

This plat represents the survey of the Third Standard Parallel South along the south boundary, the Ninth Guide Meridian West along the fractional east boundary, and a portion of the subdivisional lines of Township 12 South, Range 37 West, Seward Meridian, Alaska. The remainder of the subdivisional lines of the township were surveyed by protraction as shown on this plat.

This survey was executed by Stanley E. King, Cadastral Surveyor, May 18 through August 7, 1979, in accordance with the specifications set forth in the Manual of Surveying Instructions, 1973, Special Instructions for Group No. 351, Alaska, dated October 3, 1978, approved May 10, 1979, and Assignment Instructions dated May 14, 1979.

Corner positions of this survey were determined by Airborne Control Survey method, utilizing control stations established by the U.S. Coast and Geodetic Survey, Bureau of Land Management, and U.S. Army Corps of Engineers. Monuments were set at protracted corner positions based on official Bureau of Land Management protraction diagrams.

The mean magnetic declination shown on this plat was obtained from U.S. Geological Survey quadrangle map "ILLIAMA (A-7)", Alaska, 1951 edition, with minor revisions in 1969.

The hydrography shown on this plat identifies the meanders along the ordinary high water line of water bodies segregated from the land area. The meanders are photogrammetrically interpreted and digitized from color infrared and rectified black and white aerial photography flown in July 1980 and August 1982 by the National Aeronautical Space Administration. The digital meander line data pictorially represent the meanders used to calculate the lot areas shown on the plat and are on file in the BLM Alaska Automated Land Records System (AALRS).

This survey encompasses all lands, including islands, islets, and rocks above the line of ordinary high water which were in existence at the time of survey whether or not they are shown on this plat.

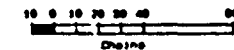
UNITED STATES DEPARTMENT OF THE INTERIOR  
BUREAU OF LAND MANAGEMENT  
Anchorage, Alaska

This plat is strictly conformable to the approved field notes, and the survey, having been correctly executed in accordance with the requirements of law and the regulations of this Bureau, is hereby accepted.

For the Director

*James R. ...* Sept 3, 1985  
Date

Deputy State Director for Cadastral Survey,  
Alaska



Area Surveyed: 15,711.37 Acres

# STATE SELECTION SURVEY, GROUP No. 310, AREA A, SEWARD MERIDIAN, ALASKA PROTRACTED TOWNSHIPS

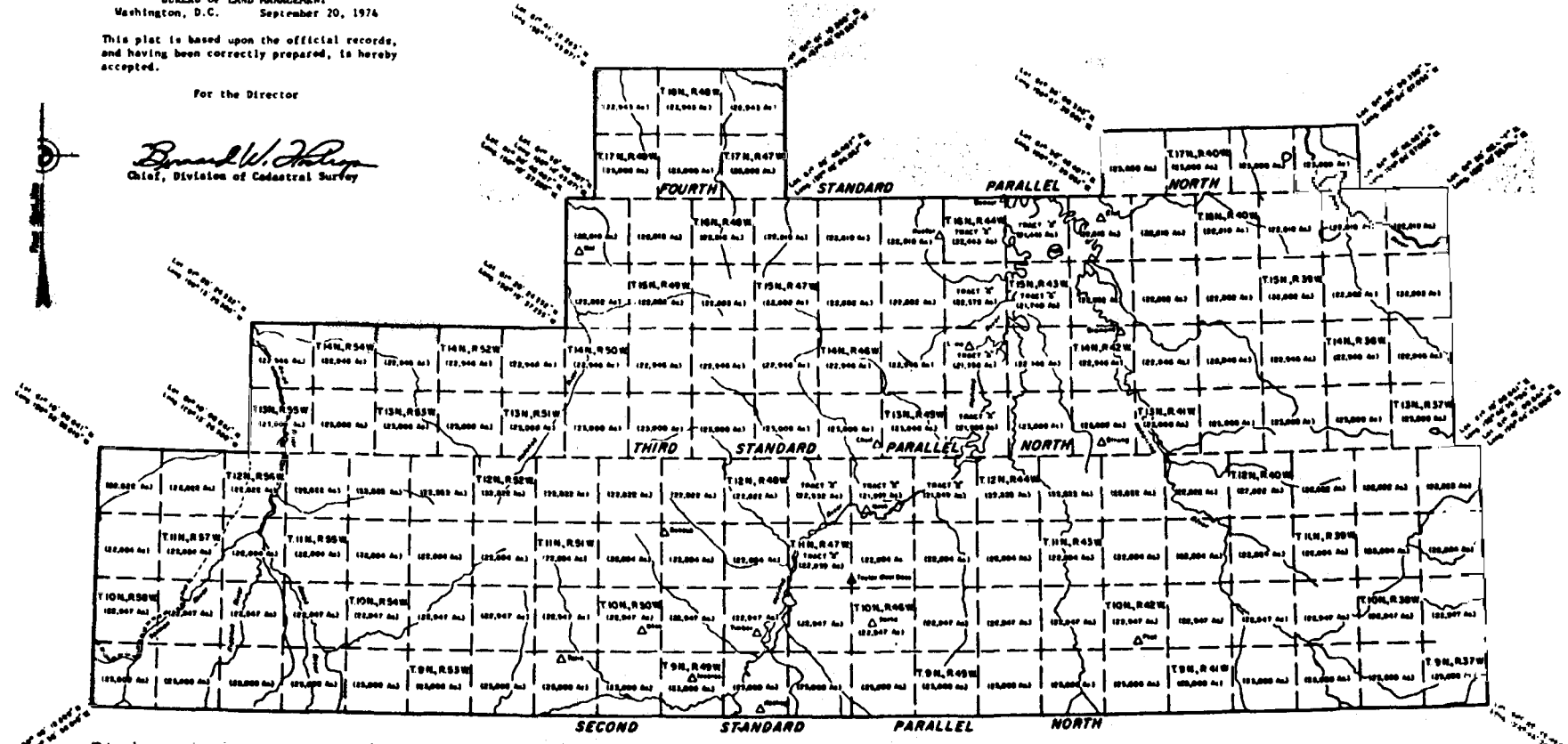
Tps.9-16N,R37W, Tps.9-17N,Rs.38-41W, Tps.9-16N,Rs.42-46W;  
Tps.9-18N,Rs.47-49W, Tps.9-16N,R50W, Tps.9-14N,Rs.51-55W, Tps.9-12N,Rs.56-58W.

UNITED STATES DEPARTMENT OF THE INTERIOR  
BUREAU OF LAND MANAGEMENT  
Washington, D.C. September 20, 1974

This plat is based upon the official records,  
and having been correctly prepared, is hereby  
accepted.

For the Director

*Bernard W. Johnson*  
Chief, Division of Cadastral Survey



This plat contains the entire survey record.

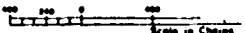
The plat represents a survey of certain lands selected by the State of Alaska pursuant to the grants made or confirmed by the Alaska Statehood Act of July 7, 1958 (72 Stat. 339). The descriptions of these lands, their areas and geographic coordinates of angle points along the perimeter, unless previously surveyed, are as shown on Protraction Diagram Nos. 54-18, 19, and 20, approved June 17, 1960; 55-17, approved December 29, 1959; 510-1, 2, 6, 7, and 8, approved July 27, 1959; and 511-2, 3, 4, 5, 6, and 7 approved July 27, 1956.

A Memorandum of Understanding between the State of Alaska and the United States on the survey of Alaska State Selections, dated September 10 and September 21, 1973, provides the basis by which this plat was created.

The preparation of this plat was authorized under Special Instructions dated April 22, 1974, for Group No. 310, Alaska.

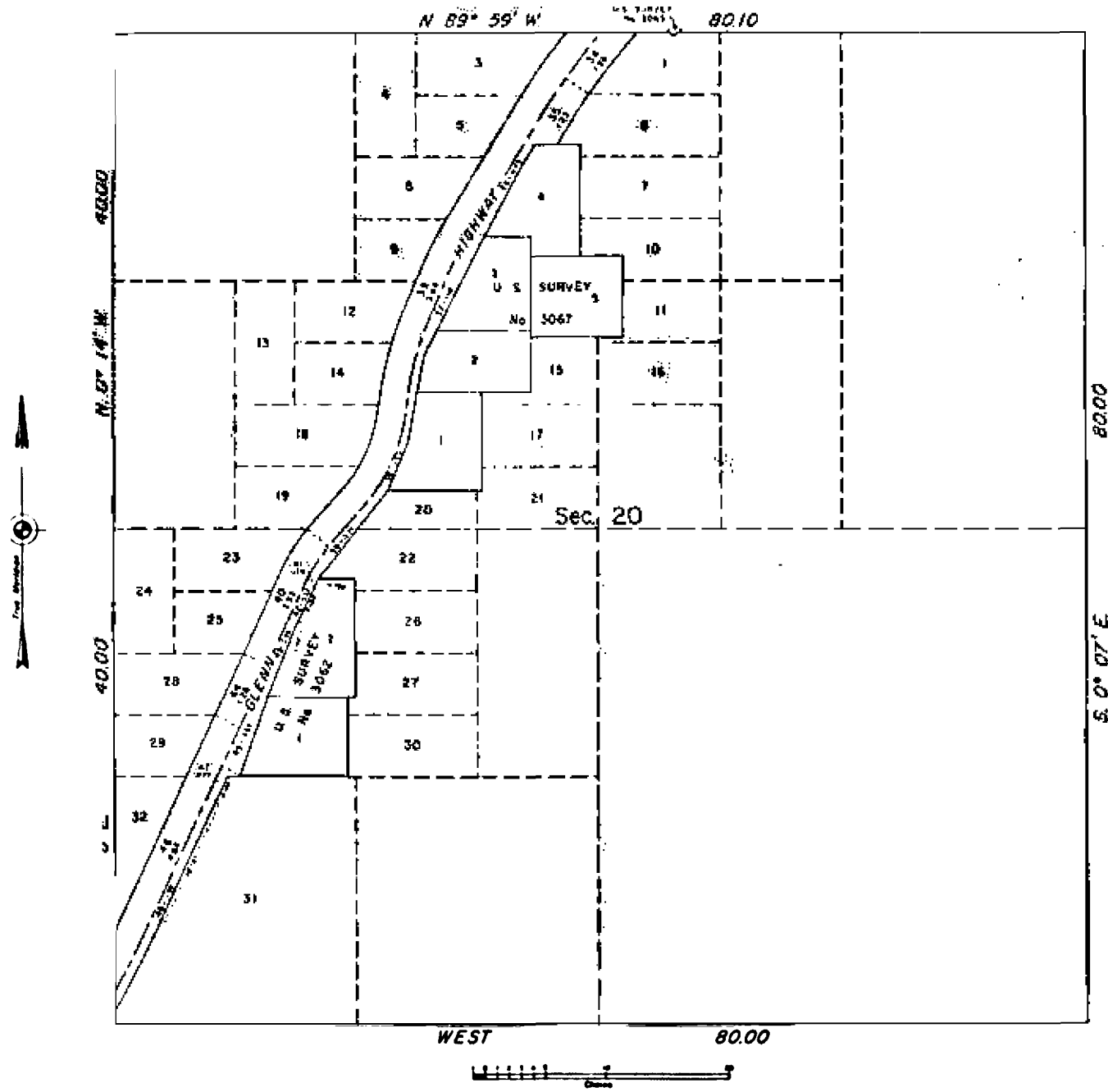
The water area of that portion of the Hottelna River north-south of its intersection with the boundary between Rs. 47 and 48 W., T. 11 N., has been excluded from the areas of the townships through which it flows. The remaining portions of these townships have been designated Tracts A for legal description purposes.

The hydrography as shown on this plat was obtained from current U. S. Geological Survey topographic maps.



Area 3,750,520 Acres

TOWNSHIP 15 NORTH, RANGE 1 WEST, OF THE SEWARD MERIDIAN, ALASKA  
 SUPPLEMENTAL PLAT



This plat, showing a subdivision of original Lot 2, sec. 20, T. 15 N., R. 1 W., Seward Meridian, Alaska, is based upon the township plat accepted June 18, 1917, June 11, 1931, and May 17, 1931, the plat of D.S. Survey No. 3068, accepted June 17, 1931, D.S. Survey No. 3067, accepted June 20, 1931, and D.S. Survey No. 3069, accepted March 20, 1931; and the lands in parcels of land transferred from original patentee to succeeding landowners.

UNITED STATES DEPARTMENT OF THE INTERIOR  
 BUREAU OF LAND MANAGEMENT  
 Washington, D.C. May 1, 1978

This plat, showing amended settings, is based upon the official records, and having been correctly prepared in accordance with the regulations of this Bureau, is hereby accepted.

Per the Director

*Bernard W. Haley*  
 Chief, Division of Cadastral Survey

### U. S. SURVEY No. 8994, ALASKA

STRIP  
ON  
THE NORTHEAST SHORE OF AN UNNAMED LAKE  
APPROXIMATELY 2 MILES NORTH OF ILLIWAIA LAKE  
AND  
8 MILES SOUTHWEST



CORNER NO. 1, 125'

LATITUDE: 66°40'00.00" NORTH

LONGITUDE: 150°06'44.00" WEST

AREA: 160.00 ACRES

SURVEYED

BY

RICHARD T. NELN, III, CADASTRAL SURVEYOR

SEPTEMBER 9 THROUGH SEPTEMBER 13, 1966

UNDER SPECIAL INSTRUCTIONS

DATED AUGUST 8, 1966

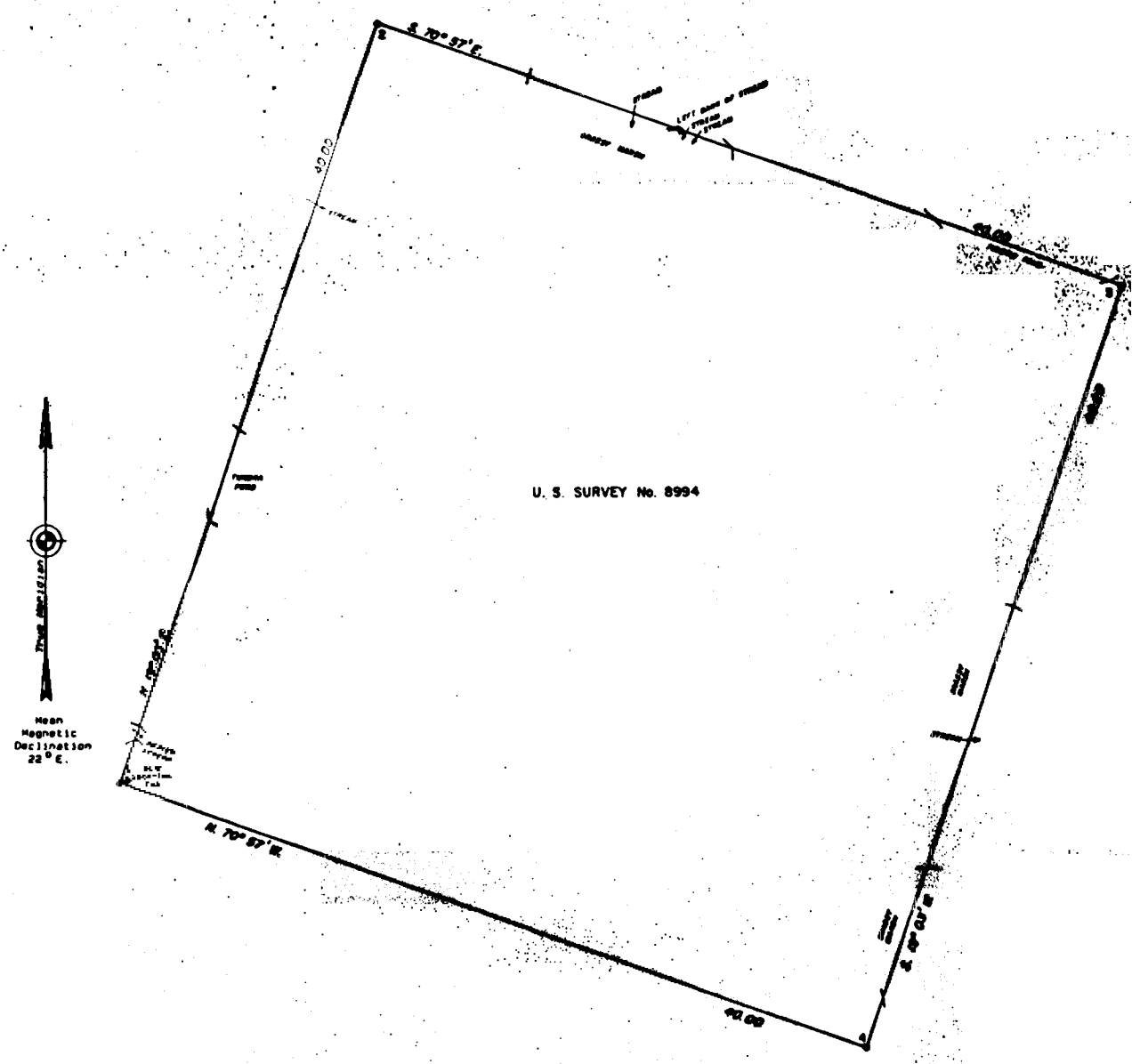
APPROVED AUGUST 13, 1966

UNITED STATES DEPARTMENT OF THE INTERIOR  
BUREAU OF LAND MANAGEMENT  
Anchorage, Alaska

This plot is strictly conformable to the approved field notes, and the survey, having been correctly executed in accordance with the requirements of law and the regulations of this Bureau, is hereby accepted.

For the Director

*James R. ...* Nov 29 1967  
Deputy State Director for Cadastral Survey,  
Alaska



**U. S. SURVEY  
NO. 8739, ALASKA**

This plat contains the entire survey record.

The south boundary of Township 22 North, Range 28 West, Section 14, 15, 16, 17, 18, 19, 20, 21, 22, 23, 24, 25, 26, 27, 28, 29, 30, 31, 32, 33, 34, 35, 36, 37, 38, 39, 40, 41, 42, 43, 44, 45, 46, 47, 48, 49, 50, 51, 52, 53, 54, 55, 56, 57, 58, 59, 60, 61, 62, 63, 64, 65, 66, 67, 68, 69, 70, 71, 72, 73, 74, 75, 76, 77, 78, 79, 80, 81, 82, 83, 84, 85, 86, 87, 88, 89, 90, 91, 92, 93, 94, 95, 96, 97, 98, 99, 100, 101, 102, 103, 104, 105, 106, 107, 108, 109, 110, 111, 112, 113, 114, 115, 116, 117, 118, 119, 120, 121, 122, 123, 124, 125, 126, 127, 128, 129, 130, 131, 132, 133, 134, 135, 136, 137, 138, 139, 140, 141, 142, 143, 144, 145, 146, 147, 148, 149, 150, 151, 152, 153, 154, 155, 156, 157, 158, 159, 160, 161, 162, 163, 164, 165, 166, 167, 168, 169, 170, 171, 172, 173, 174, 175, 176, 177, 178, 179, 180, 181, 182, 183, 184, 185, 186, 187, 188, 189, 190, 191, 192, 193, 194, 195, 196, 197, 198, 199, 200, 201, 202, 203, 204, 205, 206, 207, 208, 209, 210, 211, 212, 213, 214, 215, 216, 217, 218, 219, 220, 221, 222, 223, 224, 225, 226, 227, 228, 229, 230, 231, 232, 233, 234, 235, 236, 237, 238, 239, 240, 241, 242, 243, 244, 245, 246, 247, 248, 249, 250, 251, 252, 253, 254, 255, 256, 257, 258, 259, 260, 261, 262, 263, 264, 265, 266, 267, 268, 269, 270, 271, 272, 273, 274, 275, 276, 277, 278, 279, 280, 281, 282, 283, 284, 285, 286, 287, 288, 289, 290, 291, 292, 293, 294, 295, 296, 297, 298, 299, 300, 301, 302, 303, 304, 305, 306, 307, 308, 309, 310, 311, 312, 313, 314, 315, 316, 317, 318, 319, 320, 321, 322, 323, 324, 325, 326, 327, 328, 329, 330, 331, 332, 333, 334, 335, 336, 337, 338, 339, 340, 341, 342, 343, 344, 345, 346, 347, 348, 349, 350, 351, 352, 353, 354, 355, 356, 357, 358, 359, 360, 361, 362, 363, 364, 365, 366, 367, 368, 369, 370, 371, 372, 373, 374, 375, 376, 377, 378, 379, 380, 381, 382, 383, 384, 385, 386, 387, 388, 389, 390, 391, 392, 393, 394, 395, 396, 397, 398, 399, 400, 401, 402, 403, 404, 405, 406, 407, 408, 409, 410, 411, 412, 413, 414, 415, 416, 417, 418, 419, 420, 421, 422, 423, 424, 425, 426, 427, 428, 429, 430, 431, 432, 433, 434, 435, 436, 437, 438, 439, 440, 441, 442, 443, 444, 445, 446, 447, 448, 449, 450, 451, 452, 453, 454, 455, 456, 457, 458, 459, 460, 461, 462, 463, 464, 465, 466, 467, 468, 469, 470, 471, 472, 473, 474, 475, 476, 477, 478, 479, 480, 481, 482, 483, 484, 485, 486, 487, 488, 489, 490, 491, 492, 493, 494, 495, 496, 497, 498, 499, 500, 501, 502, 503, 504, 505, 506, 507, 508, 509, 510, 511, 512, 513, 514, 515, 516, 517, 518, 519, 520, 521, 522, 523, 524, 525, 526, 527, 528, 529, 530, 531, 532, 533, 534, 535, 536, 537, 538, 539, 540, 541, 542, 543, 544, 545, 546, 547, 548, 549, 550, 551, 552, 553, 554, 555, 556, 557, 558, 559, 560, 561, 562, 563, 564, 565, 566, 567, 568, 569, 570, 571, 572, 573, 574, 575, 576, 577, 578, 579, 580, 581, 582, 583, 584, 585, 586, 587, 588, 589, 590, 591, 592, 593, 594, 595, 596, 597, 598, 599, 600, 601, 602, 603, 604, 605, 606, 607, 608, 609, 610, 611, 612, 613, 614, 615, 616, 617, 618, 619, 620, 621, 622, 623, 624, 625, 626, 627, 628, 629, 630, 631, 632, 633, 634, 635, 636, 637, 638, 639, 640, 641, 642, 643, 644, 645, 646, 647, 648, 649, 650, 651, 652, 653, 654, 655, 656, 657, 658, 659, 660, 661, 662, 663, 664, 665, 666, 667, 668, 669, 670, 671, 672, 673, 674, 675, 676, 677, 678, 679, 680, 681, 682, 683, 684, 685, 686, 687, 688, 689, 690, 691, 692, 693, 694, 695, 696, 697, 698, 699, 700, 701, 702, 703, 704, 705, 706, 707, 708, 709, 710, 711, 712, 713, 714, 715, 716, 717, 718, 719, 720, 721, 722, 723, 724, 725, 726, 727, 728, 729, 730, 731, 732, 733, 734, 735, 736, 737, 738, 739, 740, 741, 742, 743, 744, 745, 746, 747, 748, 749, 750, 751, 752, 753, 754, 755, 756, 757, 758, 759, 760, 761, 762, 763, 764, 765, 766, 767, 768, 769, 770, 771, 772, 773, 774, 775, 776, 777, 778, 779, 780, 781, 782, 783, 784, 785, 786, 787, 788, 789, 790, 791, 792, 793, 794, 795, 796, 797, 798, 799, 800, 801, 802, 803, 804, 805, 806, 807, 808, 809, 810, 811, 812, 813, 814, 815, 816, 817, 818, 819, 820, 821, 822, 823, 824, 825, 826, 827, 828, 829, 830, 831, 832, 833, 834, 835, 836, 837, 838, 839, 840, 841, 842, 843, 844, 845, 846, 847, 848, 849, 850, 851, 852, 853, 854, 855, 856, 857, 858, 859, 860, 861, 862, 863, 864, 865, 866, 867, 868, 869, 870, 871, 872, 873, 874, 875, 876, 877, 878, 879, 880, 881, 882, 883, 884, 885, 886, 887, 888, 889, 890, 891, 892, 893, 894, 895, 896, 897, 898, 899, 900, 901, 902, 903, 904, 905, 906, 907, 908, 909, 910, 911, 912, 913, 914, 915, 916, 917, 918, 919, 920, 921, 922, 923, 924, 925, 926, 927, 928, 929, 930, 931, 932, 933, 934, 935, 936, 937, 938, 939, 940, 941, 942, 943, 944, 945, 946, 947, 948, 949, 950, 951, 952, 953, 954, 955, 956, 957, 958, 959, 960, 961, 962, 963, 964, 965, 966, 967, 968, 969, 970, 971, 972, 973, 974, 975, 976, 977, 978, 979, 980, 981, 982, 983, 984, 985, 986, 987, 988, 989, 990, 991, 992, 993, 994, 995, 996, 997, 998, 999, 1000.

This survey was executed by Stewart E. Sears, Registrar of Alaska Land Surveyor No. LS-2087, for the Commissioner, Interior, June 8 through June 28, 1986. In accordance with the specifications set forth in the Manual of Surveying Instructions, 1923 under Special Instructions Alaska Surveyor No. 1245 approved December 18, 1953, Contract No. 12-051-C10-20000 awarded April 26, 1986, and invited to proceed dated June 2, 1986.

Field assistants were:  
Joseph S. Boyle  
Kerline S. Strickland  
Karl E. Fisher  
Gary D. Kowal

Area: 29.98 acres  
The datum was obtained from a solar observation, and referred to the true meridian.  
The geographic position of the witness corner to corner No. 1, a meander corner, as determined by a tie to the witness corner to the meander corner of sections 2 and 35, Township 21 and 22 North, Range 28 West, Section 14, Alaska, on the right bank of the Yukon River, is:

Latitude: 61° 59' 08.23" North  
Longitude: 162° 14' 08.58" West  
The magnetic declination was taken from the National Oceanic and Atmospheric Administration National Oceanic and Atmospheric Chart, effective August 28, 1986, and is a 1880 isogonic value.  
This survey is situated on the left bank of the Yukon River at the confluence of an unnamed stream, approximately 3 1/2 miles southeasterly of the village of Pitmea Point, Alaska.  
The land, which is 1 to 10 feet above ordinary high water, is entirely level ground, and is not utilized by cultivated farms, with patches of dense willow and alder brush.  
Perimeter line approximately 98 to 99 inches below the topsets of river silt and loam.

**UNITED STATES DEPARTMENT OF THE INTERIOR  
BUREAU OF LAND MANAGEMENT  
Anchorage, Alaska**

The survey represented by this plat, having been generally executed in accordance with the requirements of law and the regulations of this Bureau, is hereby accepted.

For the Director: John A. Meyer  
Deputy State Director for Cadastral Survey, Alaska

**MEANDERS OF YUKON RIVER**

Along a well defined bank, 4 to 8 ft. high, at the line of ordinary high water.

MEANDERS OF UNNAMED SLUGH			
Along a well defined bank, 1 to 3 ft. high at the line of ordinary high water.			
1.	N. 1° 55' W.;	4.14 chs.	
2.	N. 37° 54' W.;	8.55 chs.	
3.	N. 31° 28' W.;	3.27 chs.	
4.	N. 57° 00' W.;	8.28 chs.	
5.	N. 34° 48' W.;	8.12 chs.	
6.	N. 107° 08' W.;	4.78 chs.	
7.	N. 25° 24' W.;	0.43 chs.	
8.	N. 53° 37' W.;	1.90 chs.	
9.	N. 71° 18' W.;	3.14 chs.	
10.	N. 45° 04' W.;	3.14 chs.	
11.	N. 17° 47' W.;	3.47 chs.	
12.	N. 85° 48' W.;	3.03 chs.	
13.	N. 08° 17' W.;	4.57 chs.	

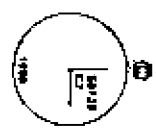
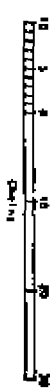
Recovered on align rod, 3/8 in. diam., firmly set, projecting 9 ins. above ground, with align cap marked as shown. Found the original survey liberators corner, 23 in. diam. hole, a line diam. 1/2 in., 24 ins. high, and with 1/8 in. to the align rod.

Recovered at Station 1 and 24, 25, 26, 27, 28, 29, 30, 31, 32, 33, 34, 35, 36, 37, 38, 39, 40, 41, 42, 43, 44, 45, 46, 47, 48, 49, 50, 51, 52, 53, 54, 55, 56, 57, 58, 59, 60, 61, 62, 63, 64, 65, 66, 67, 68, 69, 70, 71, 72, 73, 74, 75, 76, 77, 78, 79, 80, 81, 82, 83, 84, 85, 86, 87, 88, 89, 90, 91, 92, 93, 94, 95, 96, 97, 98, 99, 100.

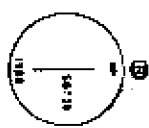
Drive on align rod, 8 ft. long, 3/4 in. diam., 8 ft. in the ground, with align cap marked as shown. No accessories available.

Drive on align rod, 8 ft. long, 3/4 in. diam., 8 ft. in the ground, with align cap marked as shown. No accessories available.

Improvement  
From W.C.M.C. No. 1  
The north-south corner of a good long fence, 10 x 13 ft., bore S. 80° 33' E., 14.20 chs. dist. long side between N. 53° E.



Drive on align rod, 8 ft. long, 3/4 in. diam., 8 ft. in the ground, with align cap marked as shown. No accessories available.



Drive on align rod, 8 ft. long, 3/4 in. diam., 8 ft. in the ground, with align cap marked as shown. No accessories available.



Drive on align rod, 8 ft. long, 3/4 in. diam., 8 ft. in the ground, with align cap marked as shown. No accessories available.

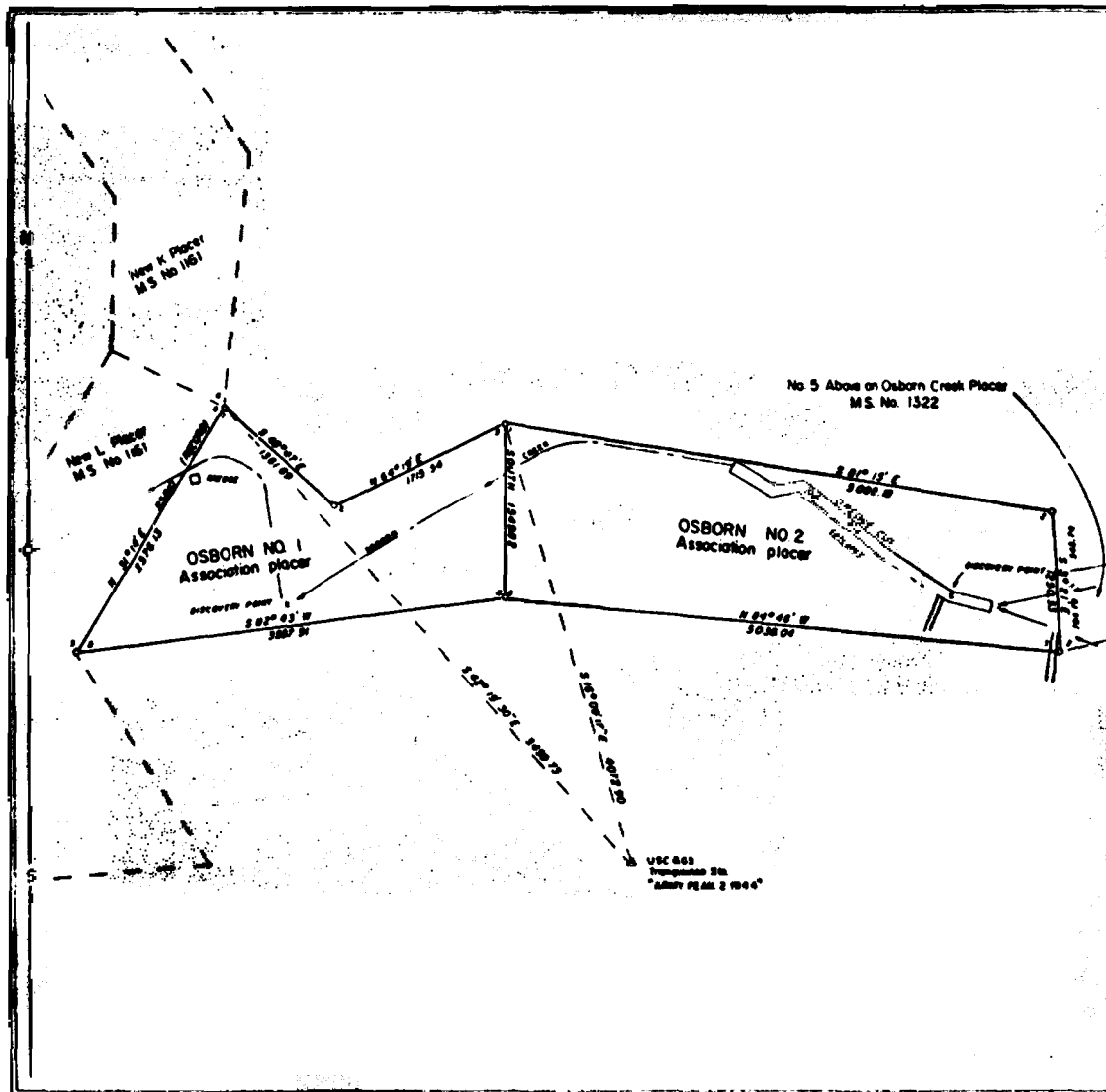
Stewart E. Sears, REGISTERED ALASKA LAND SURVEYOR, No. LS-2087, hereby certifies upon honor that, in pursuance of Special Instruction No. 1245 approved April 26, 1986, I have executed the survey depicted on this plat of survey, in strict conformity with said special instructions, the MANUAL OF INSTRUCTIONS FOR THE SURVEYOR, THE MANUAL OF INSTRUCTIONS FOR THE SURVEYOR, THE MANUAL OF INSTRUCTIONS FOR THE SURVEYOR, and the special manner describe on this plat.



Stewart E. Sears  
(Signature)

Sheet (Cont'd)





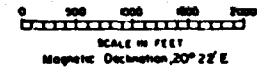
**MINERAL SURVEY  
No 2466  
ALASKA**

CLAIM OF  
**BILL BOUCHER**

KNOWN AS  
**OSBORN NO. 1 Association  
OSBORN NO. 2 Association**

SITUATE IN  
**SECTIONS 11 AND 12  
T11S, R33W  
AND  
SECTION 7  
T11S, R32W  
KATEEL RIVER MERIDIAN  
Cape Nome Mining District**

Latitude 64° 32' 58" N, Longitude 165° 12' 49" W  
of corner No 1 Osborn No. 1



Surveyed August 7, 1984 to August 10, 1984  
and September 26, 1985  
By Maurice P. Oswald, Mineral Surveyor

**UNITED STATES DEPARTMENT OF THE INTERIOR  
BUREAU OF LAND MANAGEMENT  
DIVISION OF CADASTRAL SURVEY**

*I hereby certify that this plat of Mineral  
Survey No. 2466, Alaska, is strictly conformable  
to the field notes of said survey which have been  
examined and approved.*

Nov 8, 1985 *Maurice P. Oswald*  
Anchorage Alaska Deputy State Director for  
Cadastral Survey

1. THIRTY DTS  
KODIAK ISLAND

(Sheet No. 1218)

