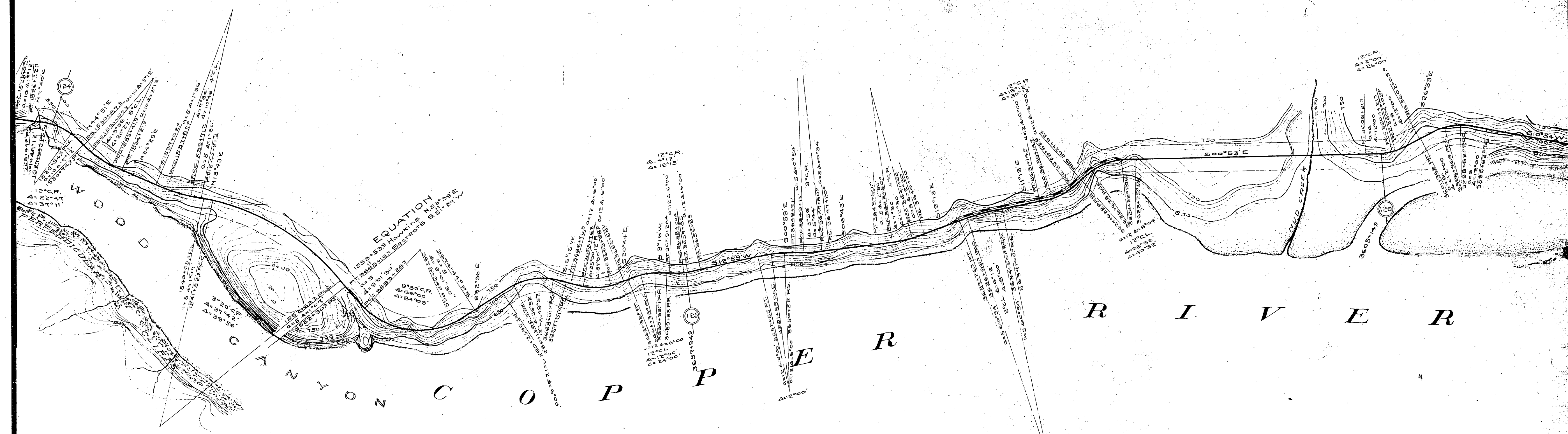


MILE 126-128
 Sta. 3610 to Sta. 3495
 C. R. & N. W. R. Y.
 (1909) Amended, Definite Location
 Scale 1"=400'

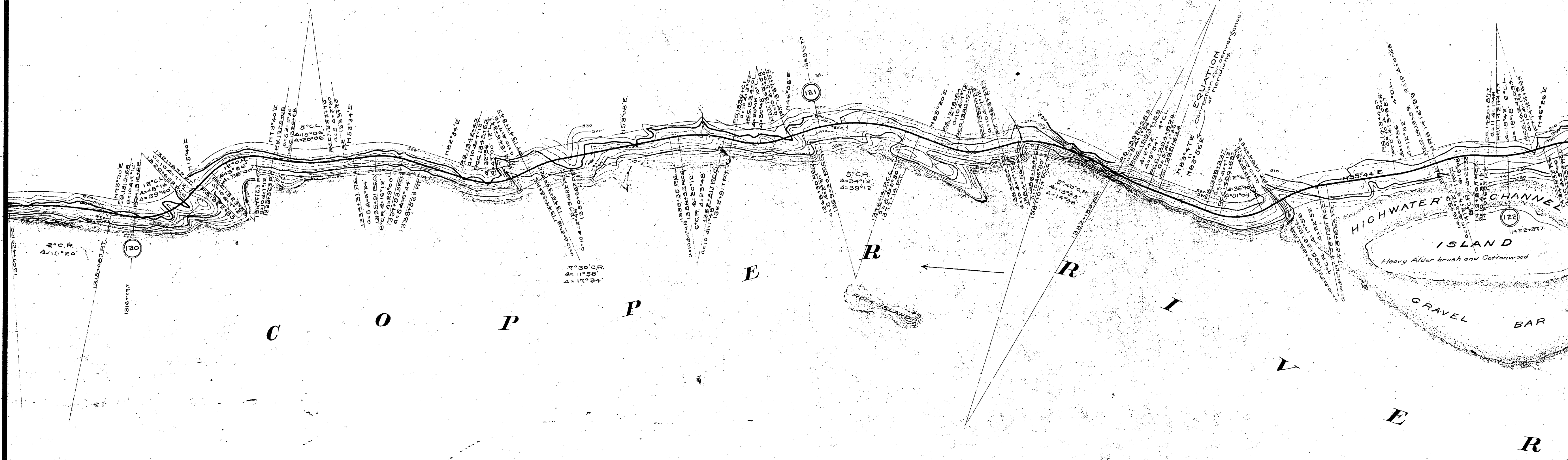


MILE 124-126
 Sta 1525 to Sta 3595
 C. R. & N. W. R.
 (1909) Amended Definite Location
 Scale 1" = 400'

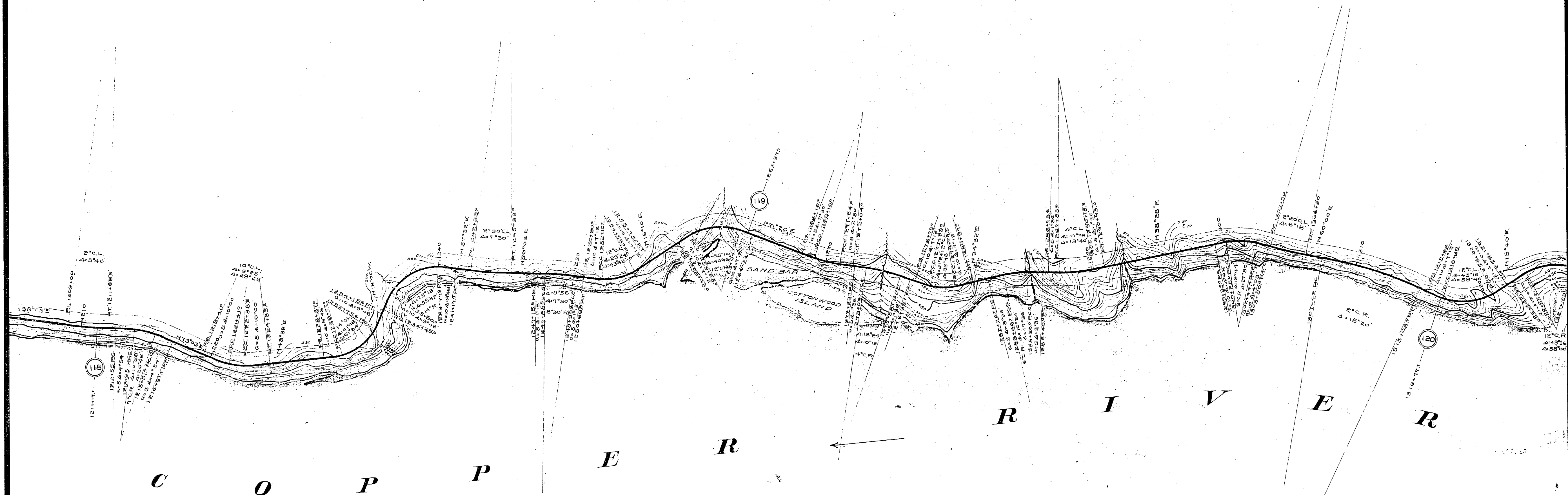
EQUATION
SECRET



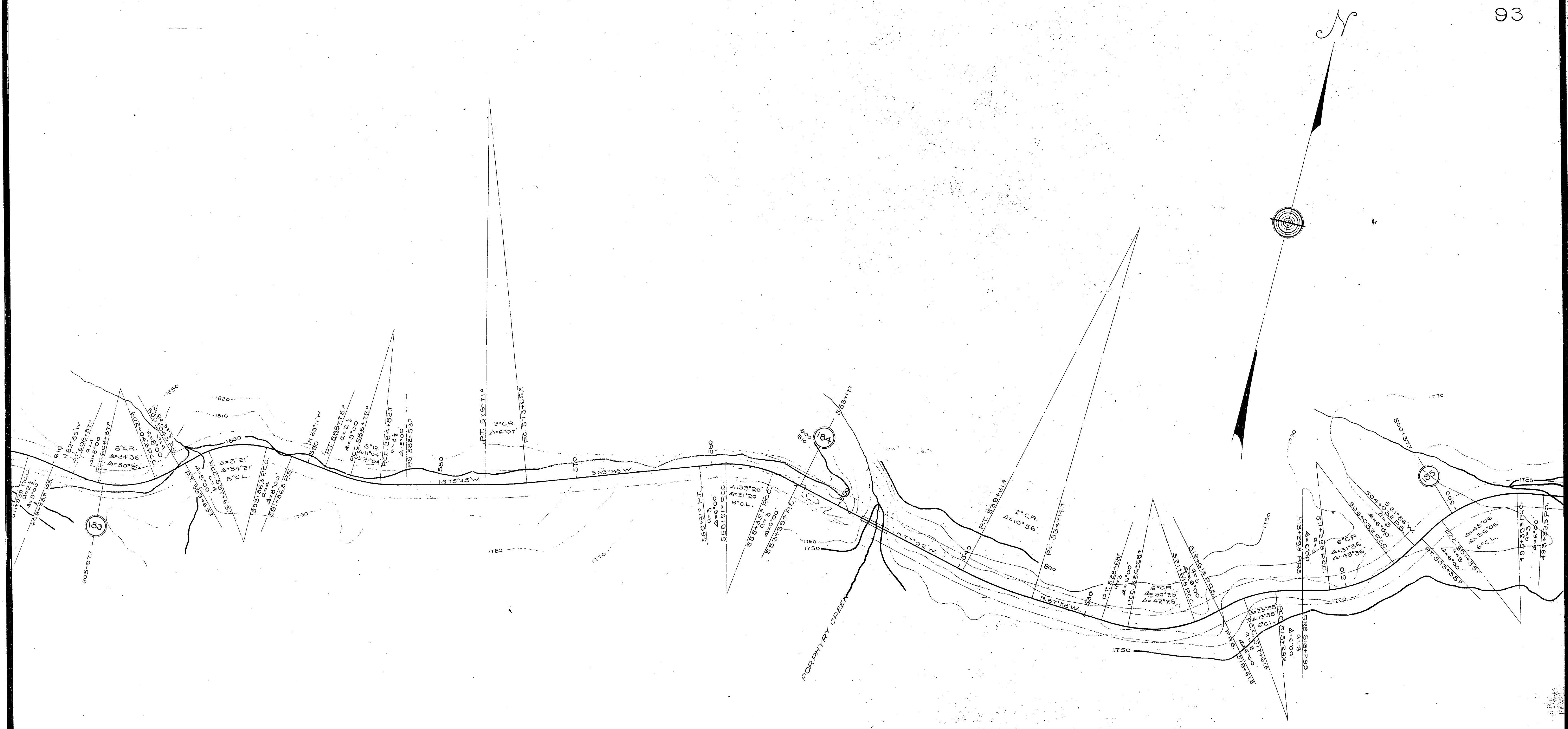
MILE 122-124
 Sta 1420 to Sta 1550
 C. R. & N. W. Ry.
 (1909) Amended Definite Location
 Scale 1" = 400'



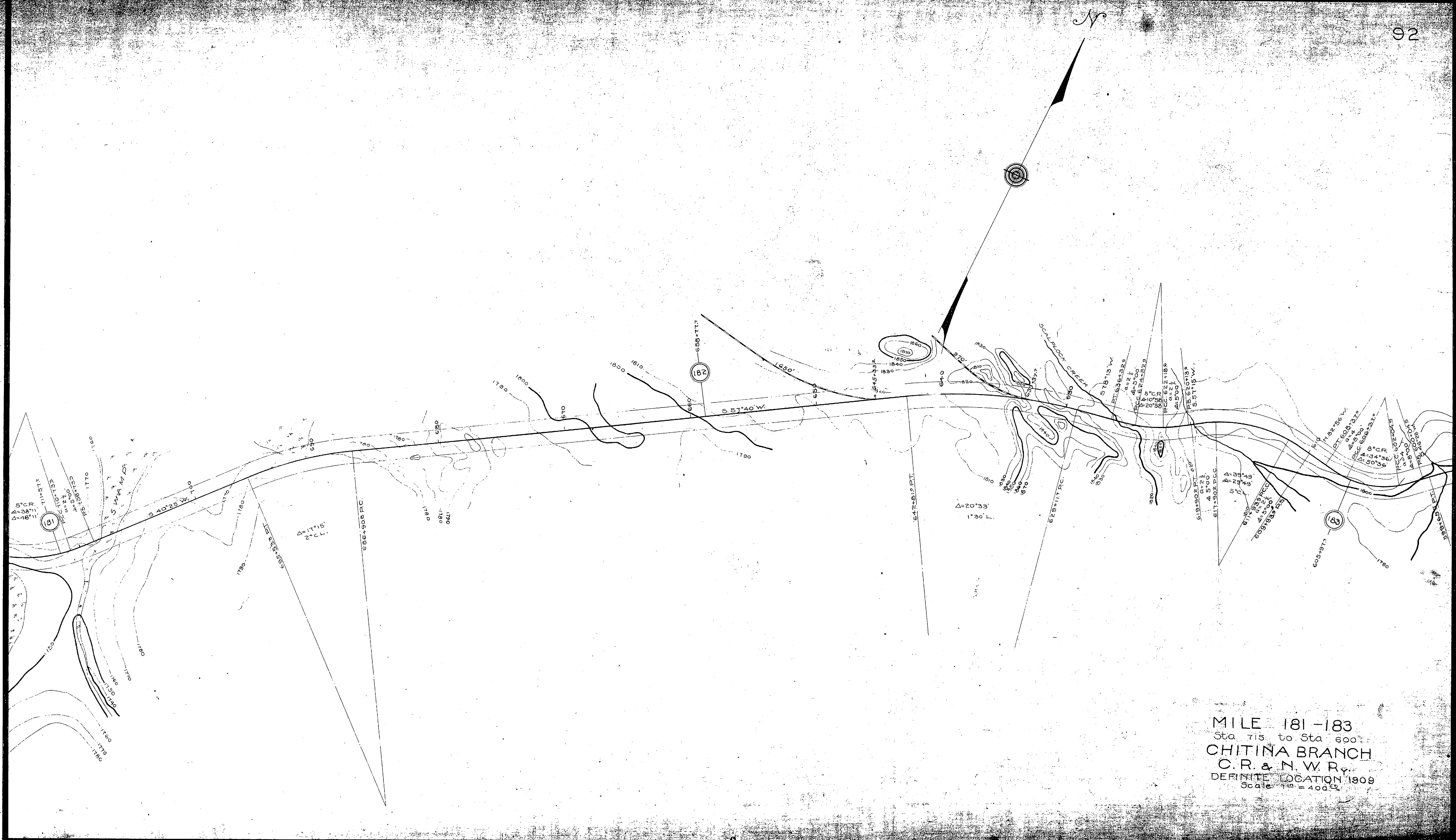
MILE 120-122
 Sta 1310 to Sta 1425
 C. R. & N. W. R.
 (1909) Amended Definite Location
 Scale 1" = 400'



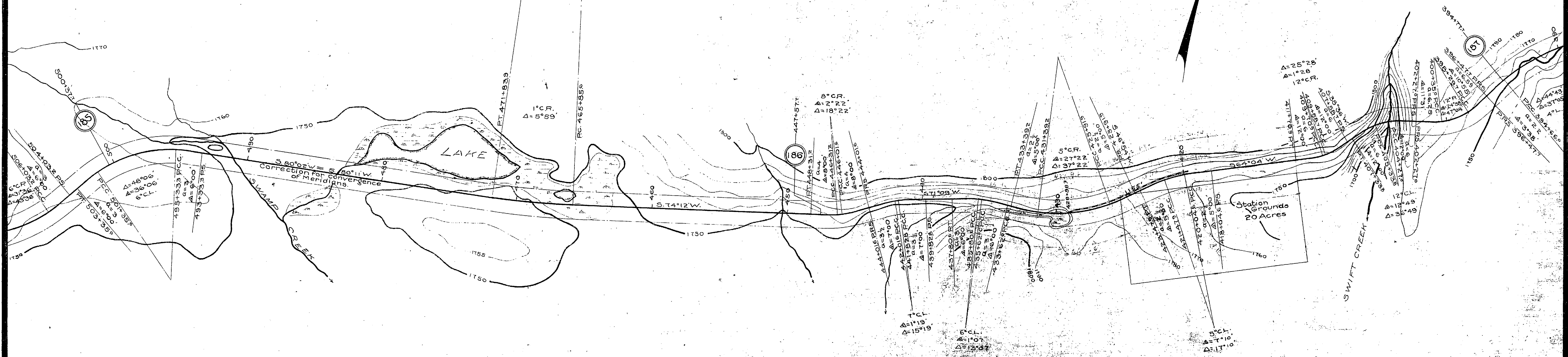
MILE 118-120
 Sta 1205 to Sta 1325
 C. R. & N. W. R. Y.
 (1909) Amended, Definite Location
 Scale 1" = 400'



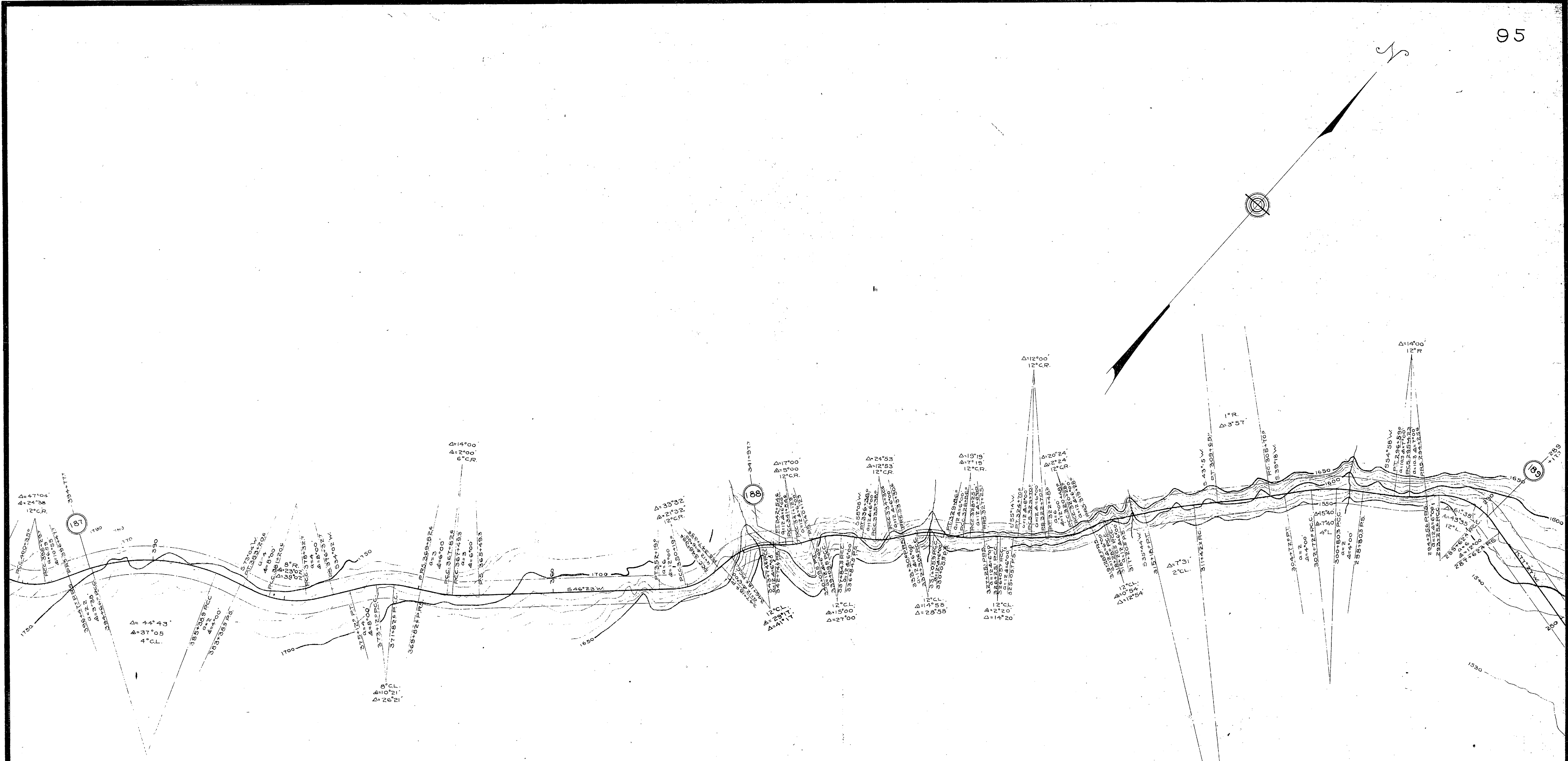
MILE 183-185
 Sta 610 to Sta 495
CHITINA BRANCH
 C.R. & N.W. Ry.
 DEFINITE LOCATION 1909
 Scale 1" = 400'



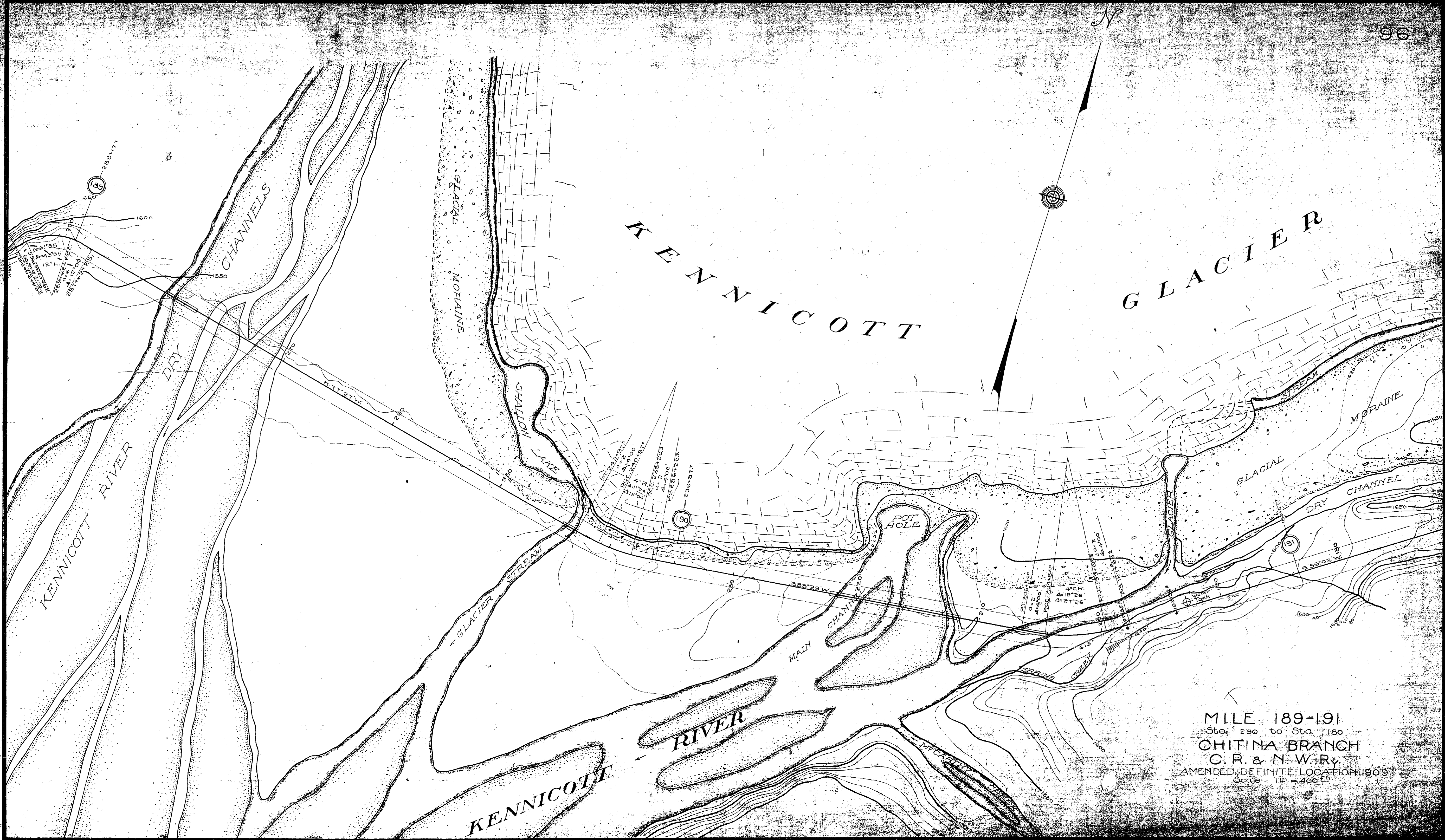
MILE 181-183
 Sta 715 to Sta 600
 CHITINA BRANCH
 C.R. & N.W.R.
 DEFINITE LOCATION 1909
 Scale 1" = 400'



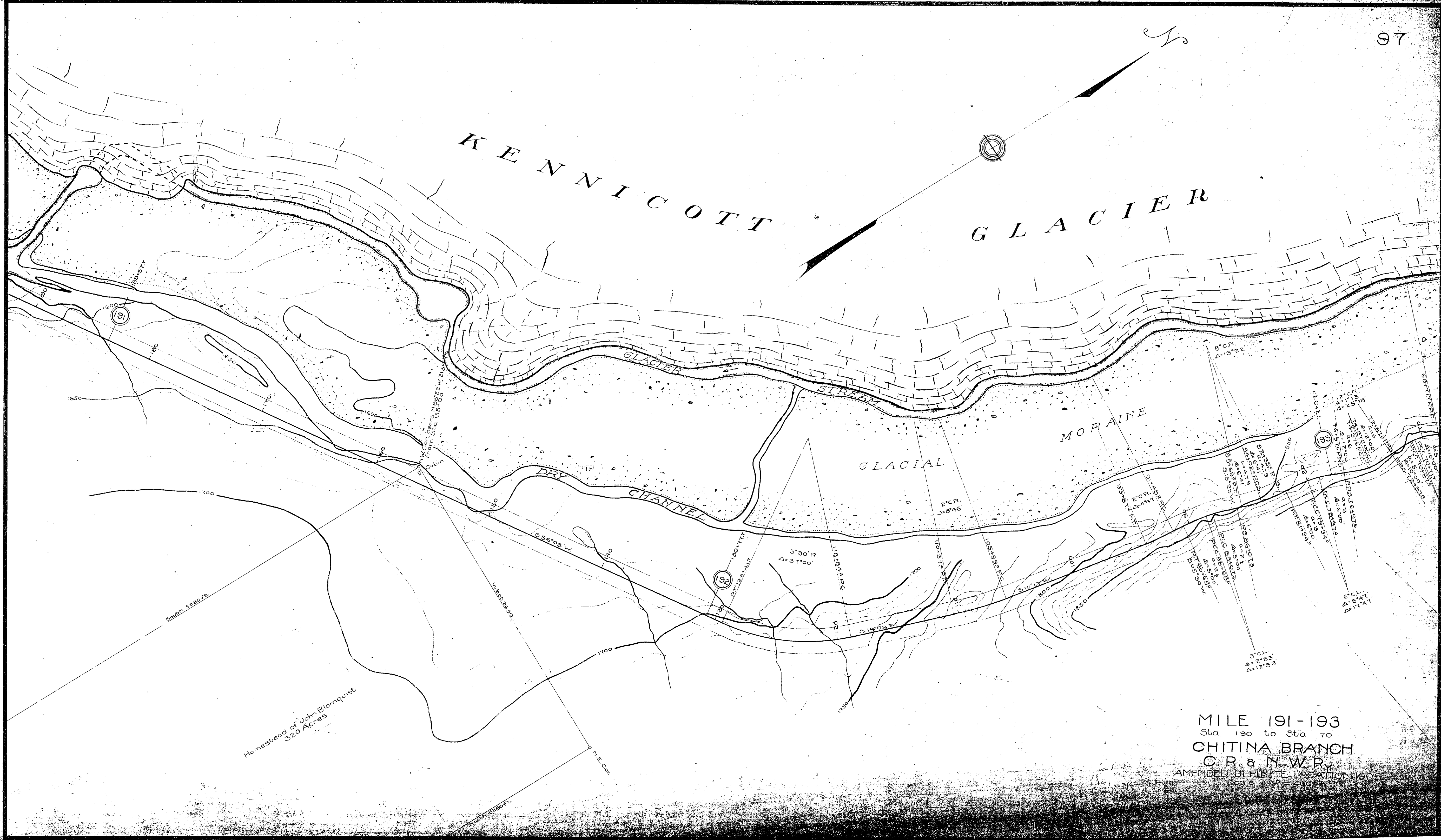
MILE 185-187
 Sta. 505 to Sta. 390
 CHITINA BRANCH
 C. R. & N. W. Ry.
 AMENDED DEFINITE LOCATION 1909
 Scale 1" = 400'



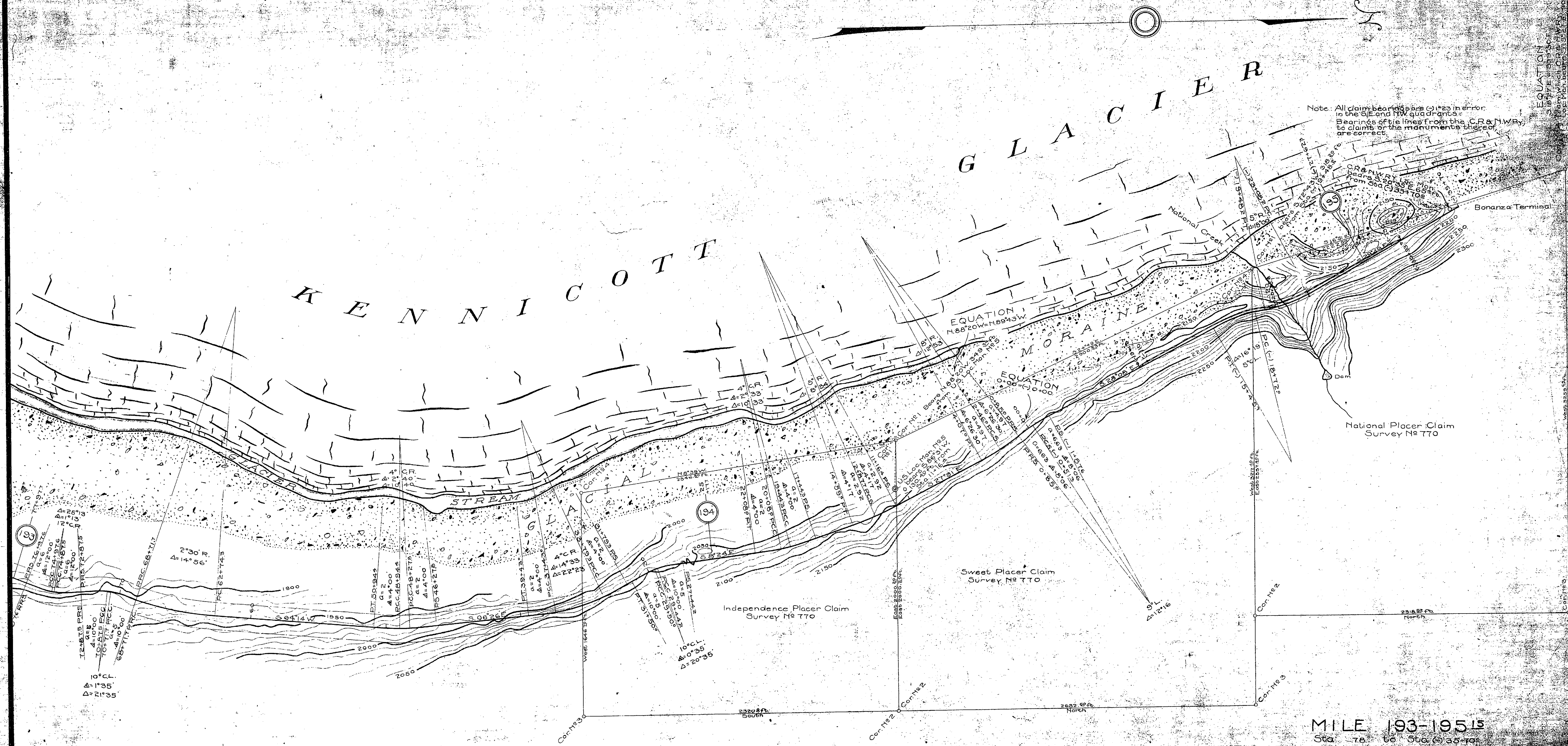
MILE 187-189
 Sta 400 to Sta 280
 CHITINA BRANCH
 C. R. & N. W. RY.
 AMENDED DEFINITE LOCATION, 1909
 Scale 1" = 400'



MILE 189-191
 Sta. 290 to Sta. 180
 CHITINA BRANCH
 C. R. & N. W. RY.
 AMENDED DEFINITE LOCATION 1909
 Scale 1" = 400'



MILE 191-193
 Sta 190 to Sta 70
CHITINA BRANCH
 C. R. & N. W. R.
 AMENDED DEFINITE LOCATION 1908
 Scale 1" = 2000'



Note: All claim bearings are correct in error in the S.E. and N.W. quadrants. Bearings of tie lines from the CR&NW Ry. to claims or the monuments thereof are correct.

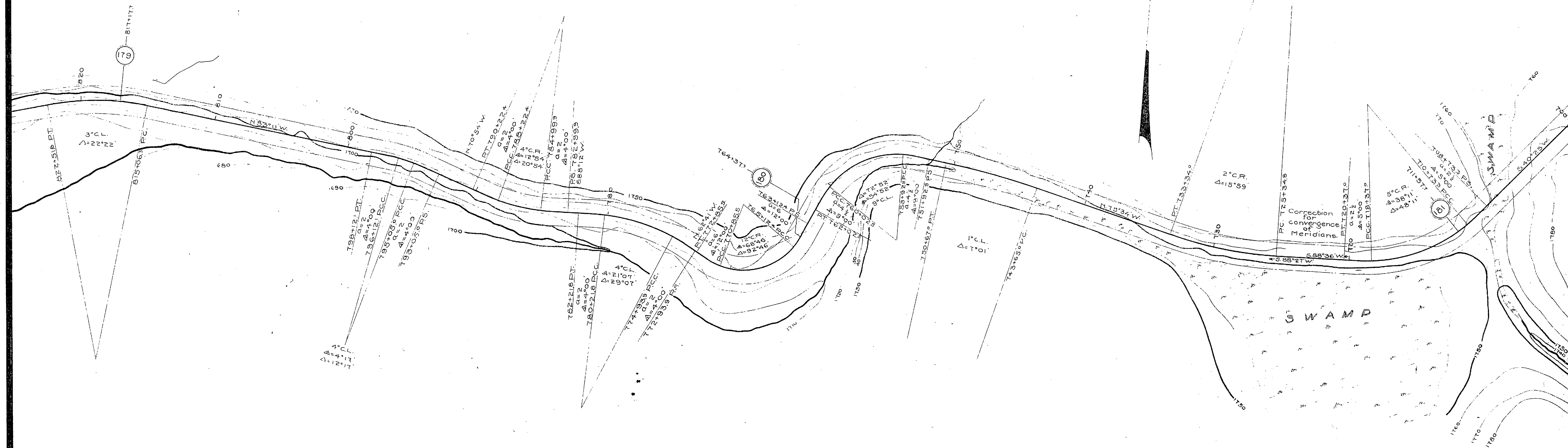
CR&NW Ry. bears & distance from Sta. (355+100)

National Placer Claim Survey No. 770

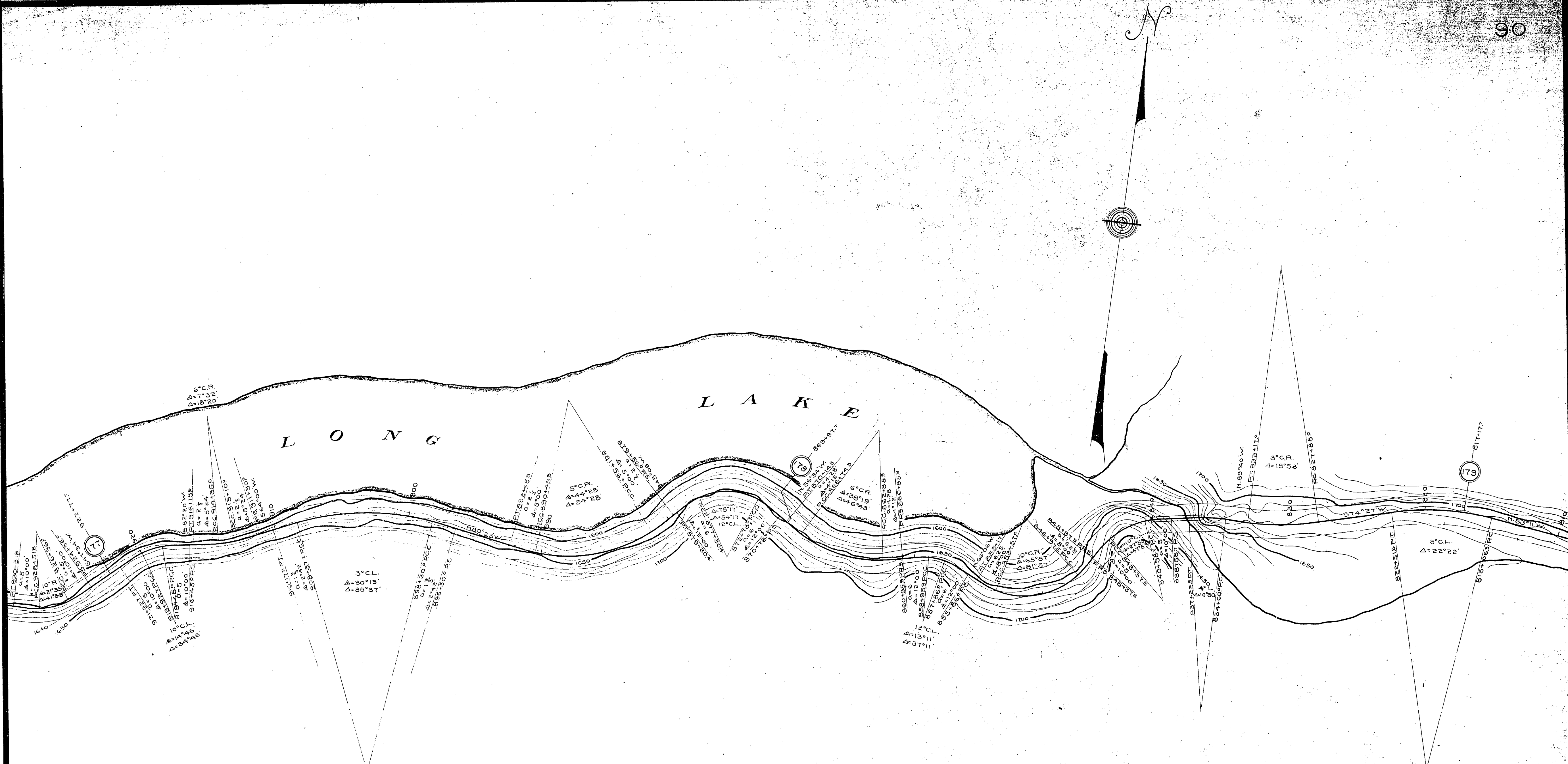
Sweet Placer Claim Survey No. 770

Independence Placer Claim Survey No. 770

MILE 193-195.15
Sta. 78 to Sta. (355+100)
CHITINA BRANCH
C.R. & N.W.R.



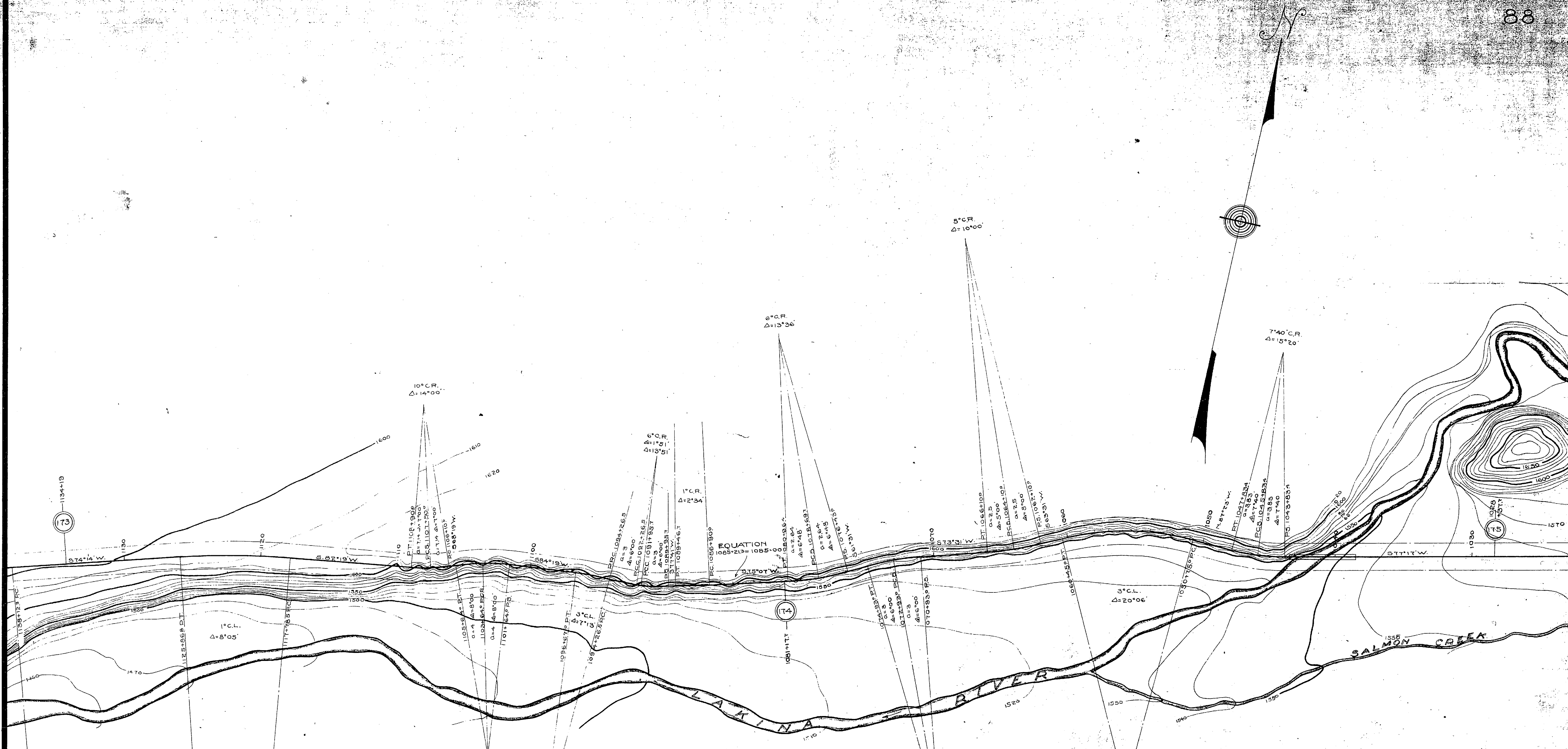
MILE 179-181.
 Sta 820 to Sta 700
 CHITINA BRANCH
 C.R. & N.W. Ry.
 DEFINITE LOCATION 1909
 Scale 1" = 400'



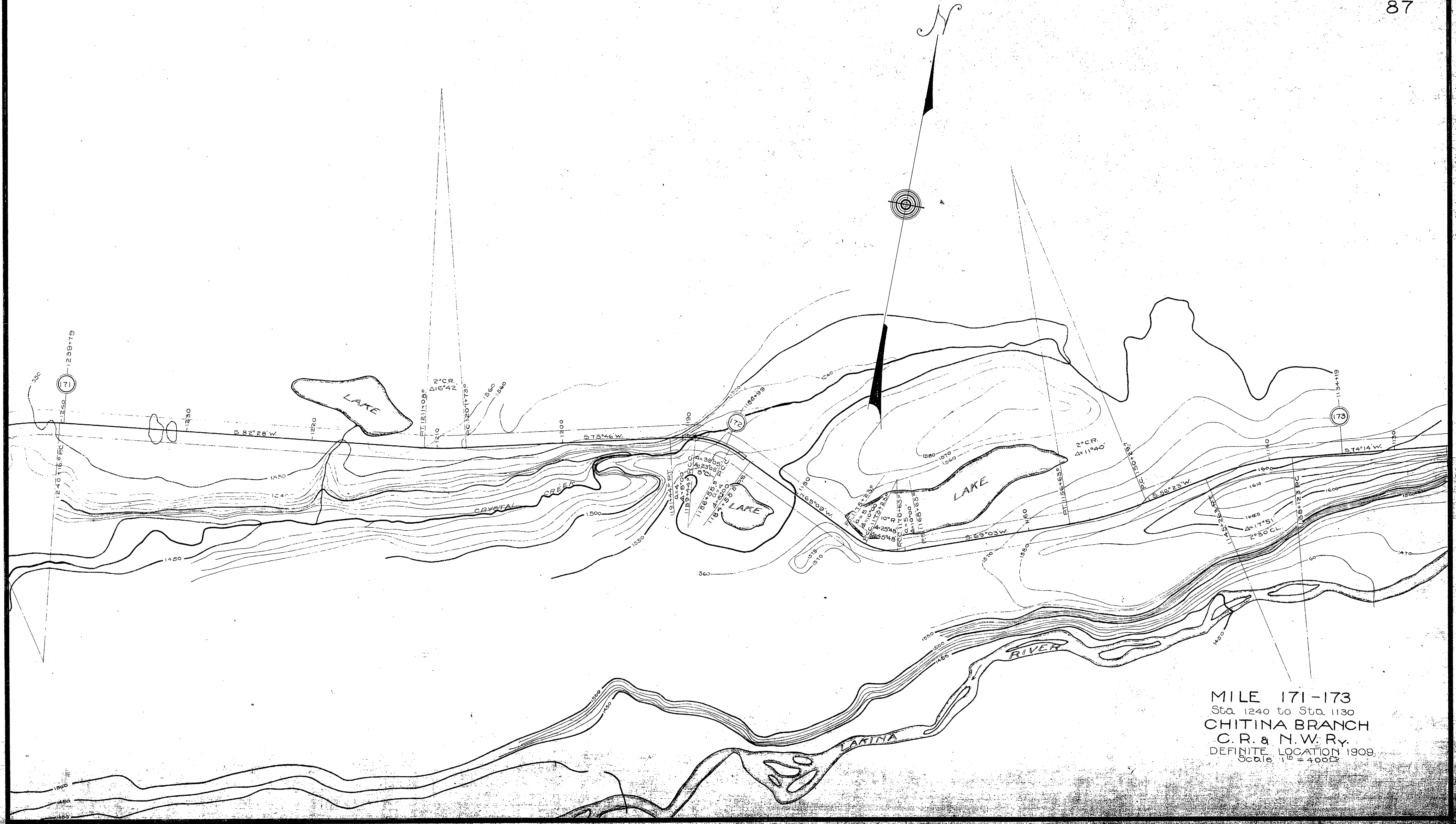
MILE 177-179
 Sta. 930 to Sta. 810
 CHITINA BRANCH
 C. R. & N. W. RY.
 DEFINITE LOCATION 1909
 Scale 1" = 400'



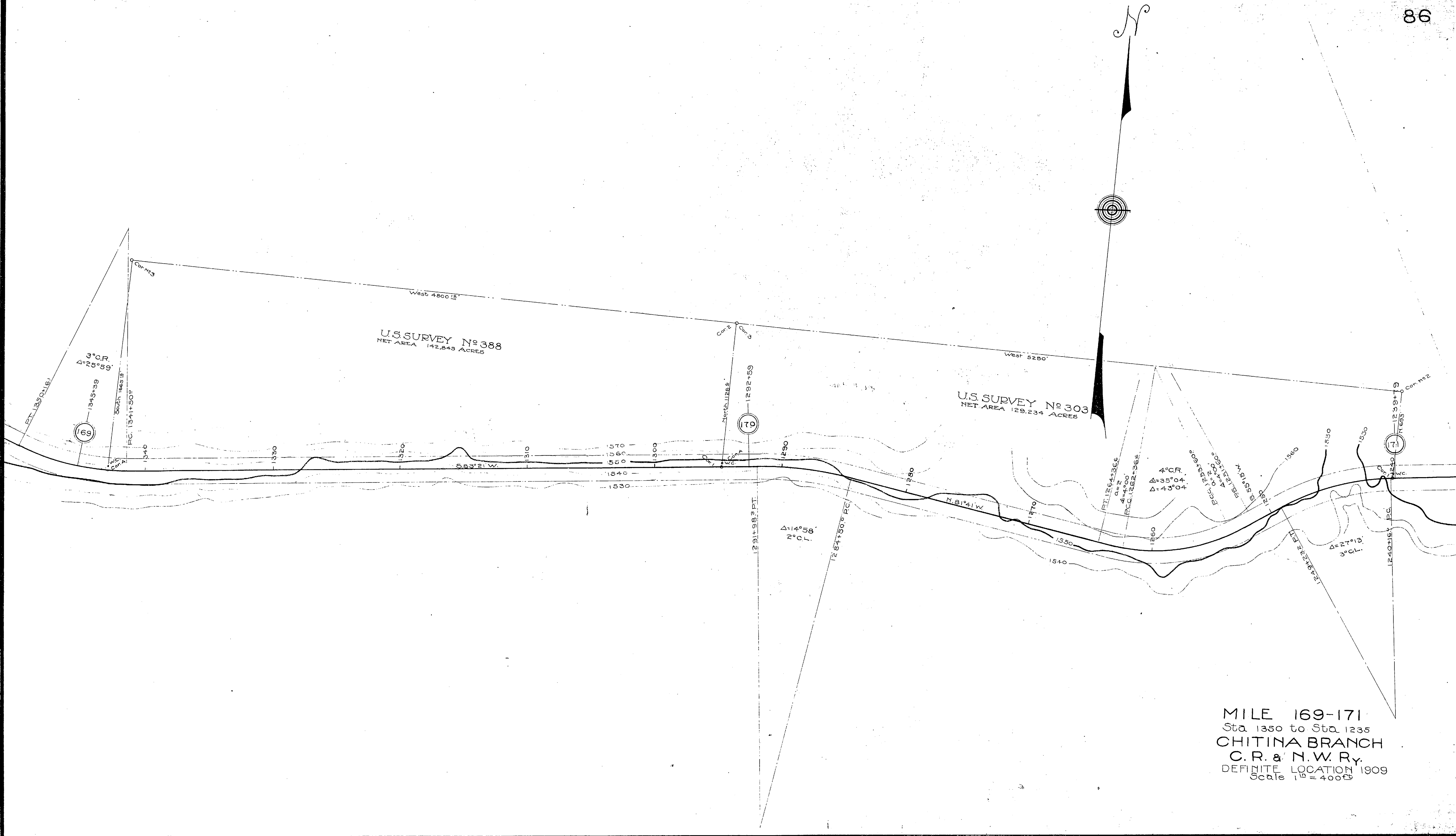
MILE 175-177
 Sta. 1030 to Sta. 915
 CHITINA BRANCH
 C. R. & N. W. R. Y.
 DEFINITE LOCATION 1909
 Scale 1" = 400'



MILE 173-175
 Sta 1135 to Sta 1025
CHITINA BRANCH
C.R. & N.W. Ry.
 DEFINITE LOCATION 1909
 Scale 1" = 400'



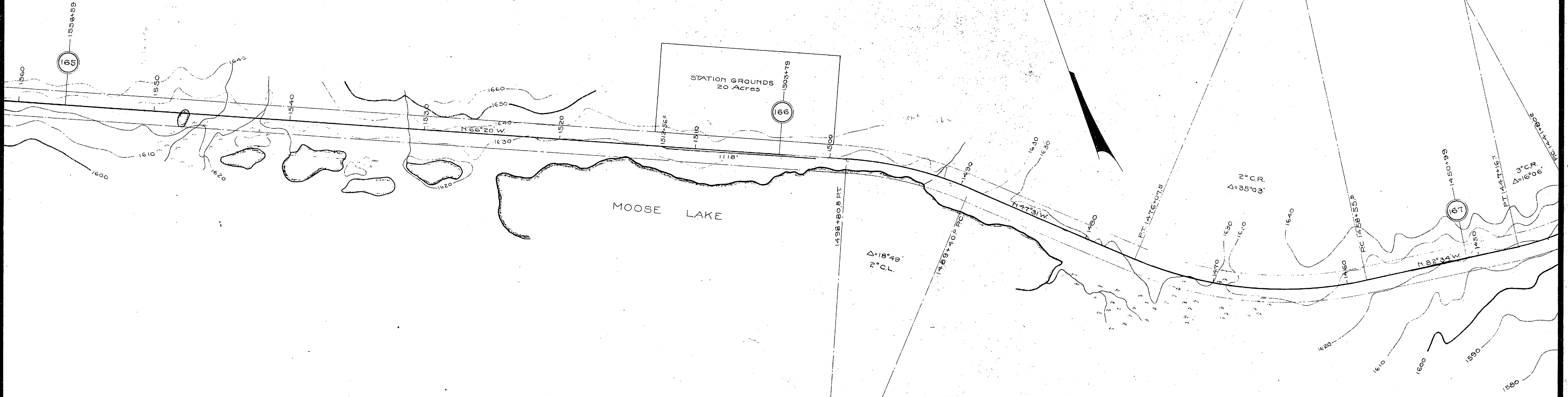
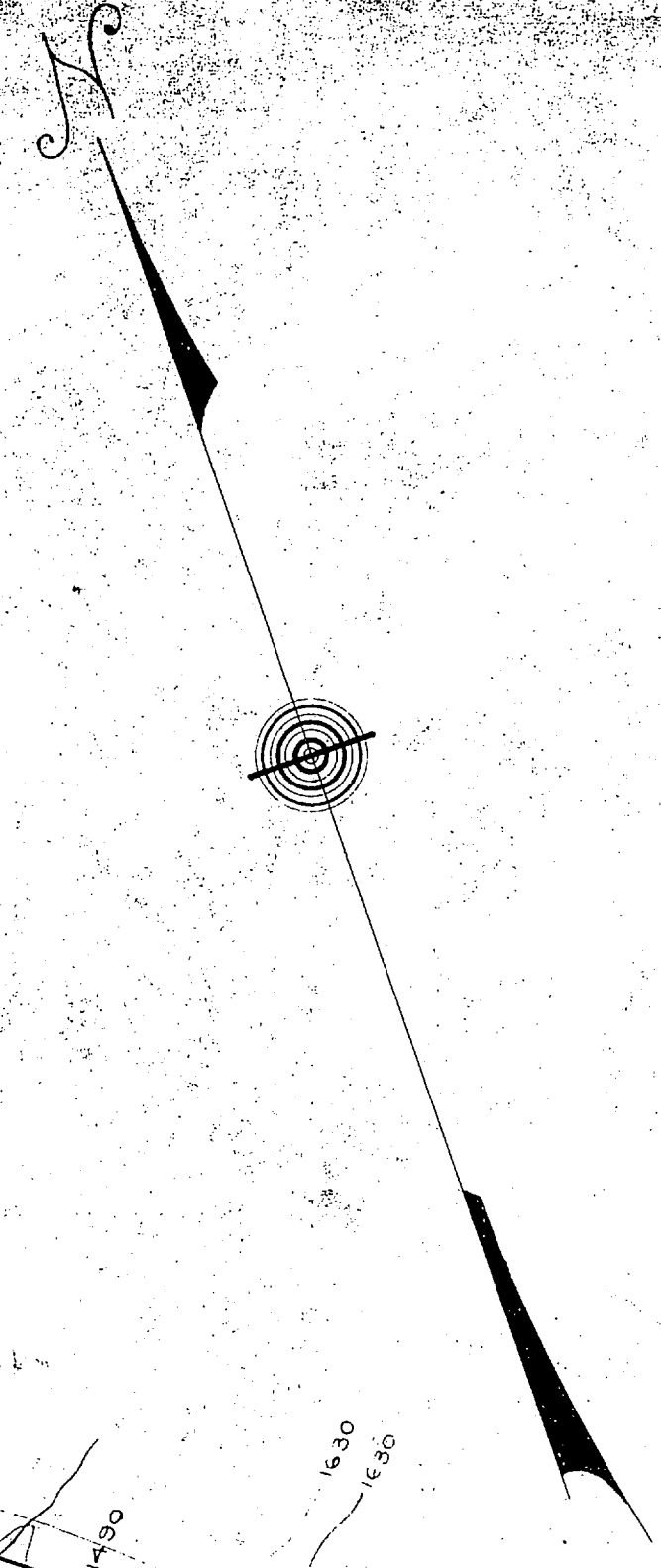
MILE 171-173
 Sta 1240 to Sta 1130
 CHITINA BRANCH
 C. R. & N. W. Ry.
 DEFINITE LOCATION 1909
 Scale 1" = 400'



MILE 169-171
Sta 1350 to Sta 1235
CHITINA BRANCH
C. R. & N. W. Ry.
DEFINITE LOCATION 1909
Scale 1" = 400'



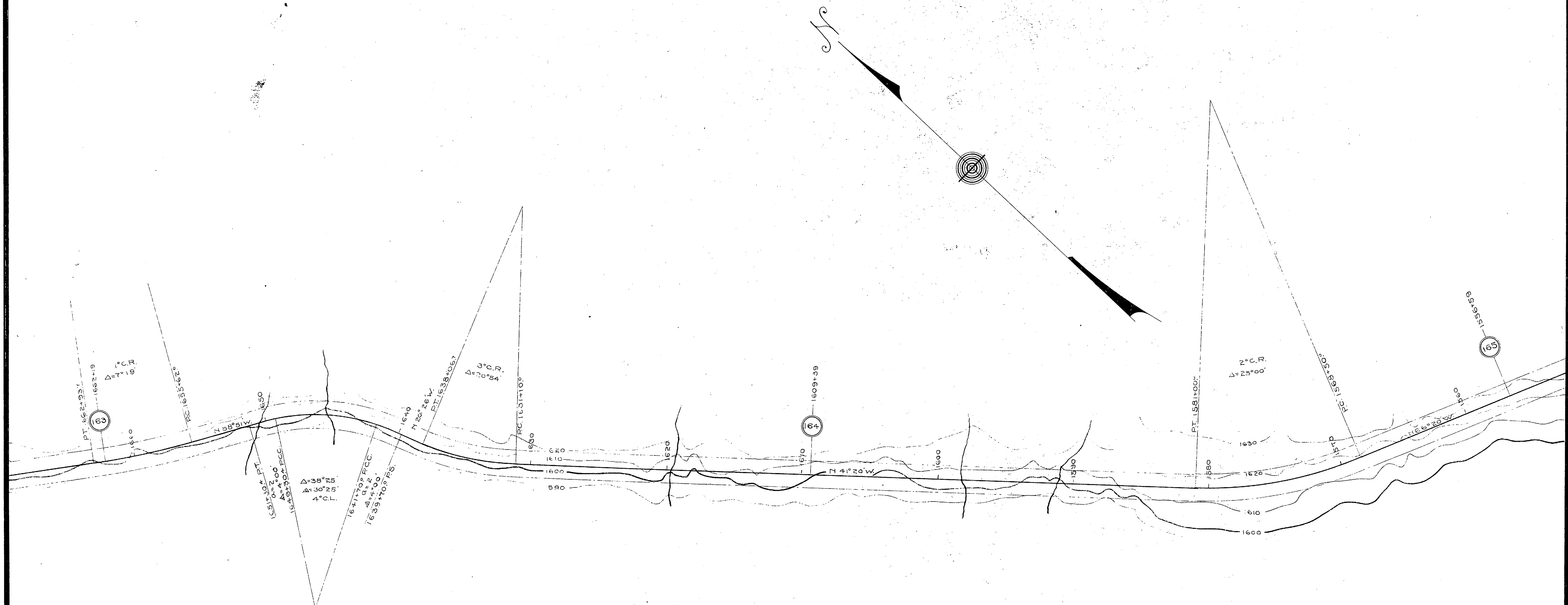
MILE 167-169
 Sta 1455 to Sta 1340
 CHITINA BRANCH
 C. R. & N. W. Ry.
 DEFINITE LOCATION 1909
 Scale 1" = 400'



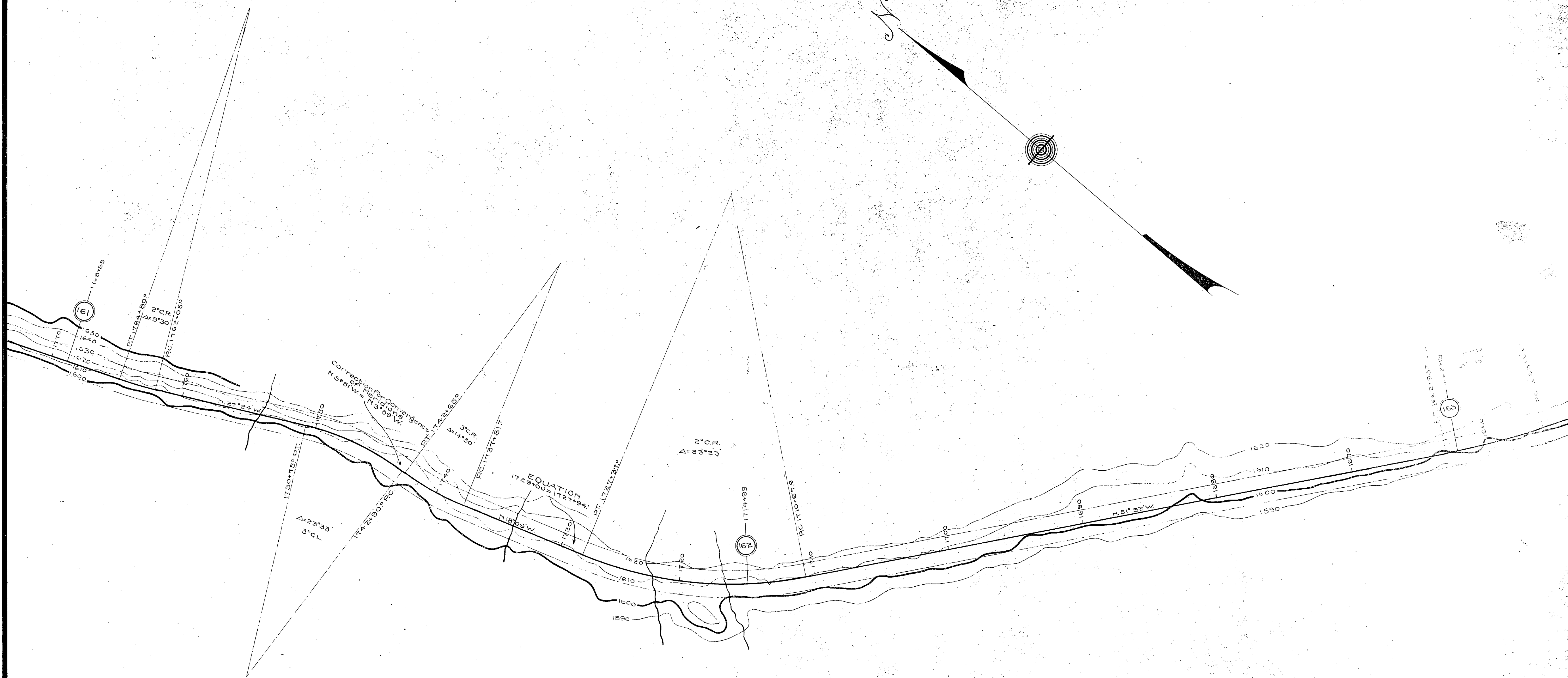
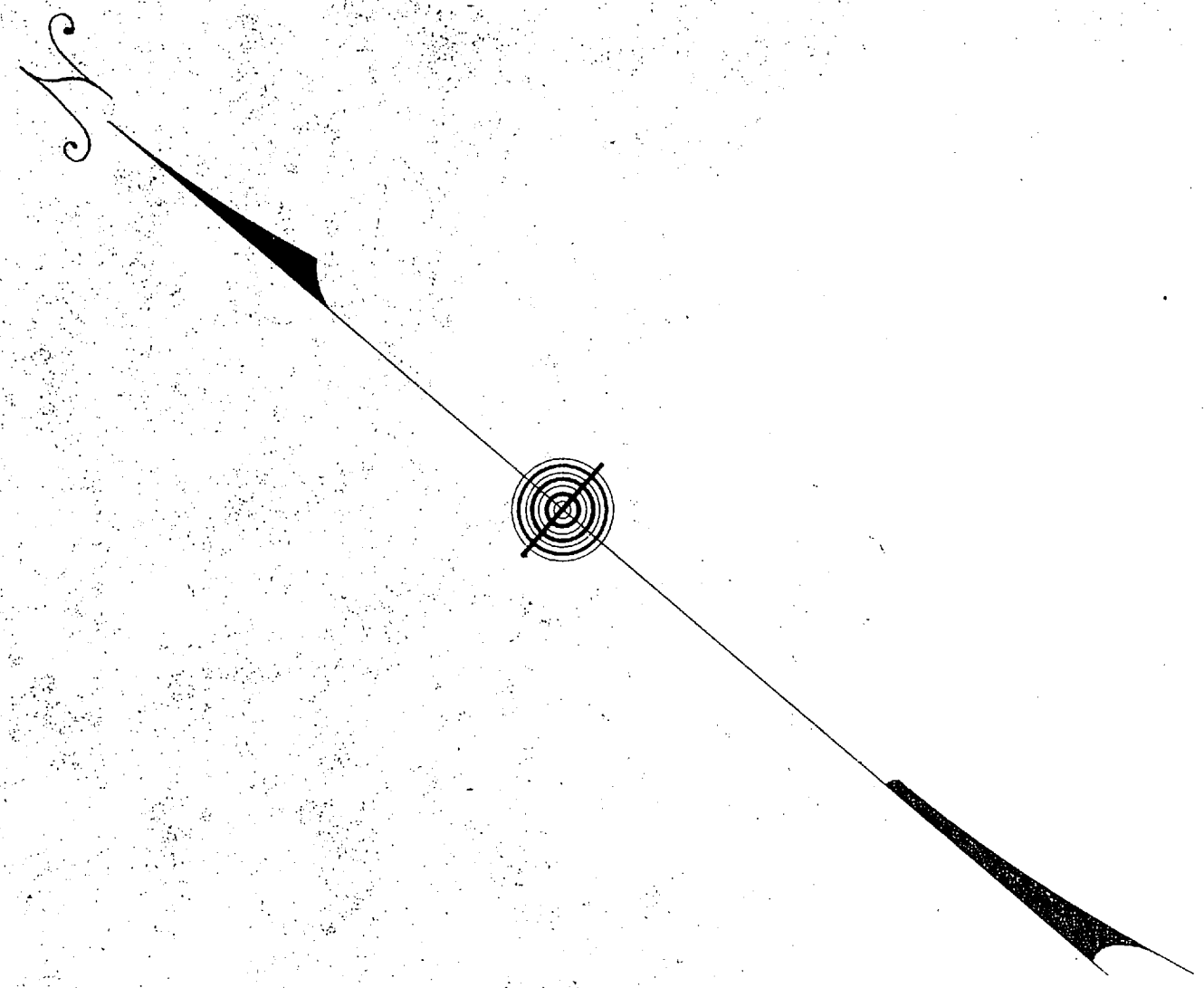
STATION GROUNDS
20 Acres

MOOSE LAKE

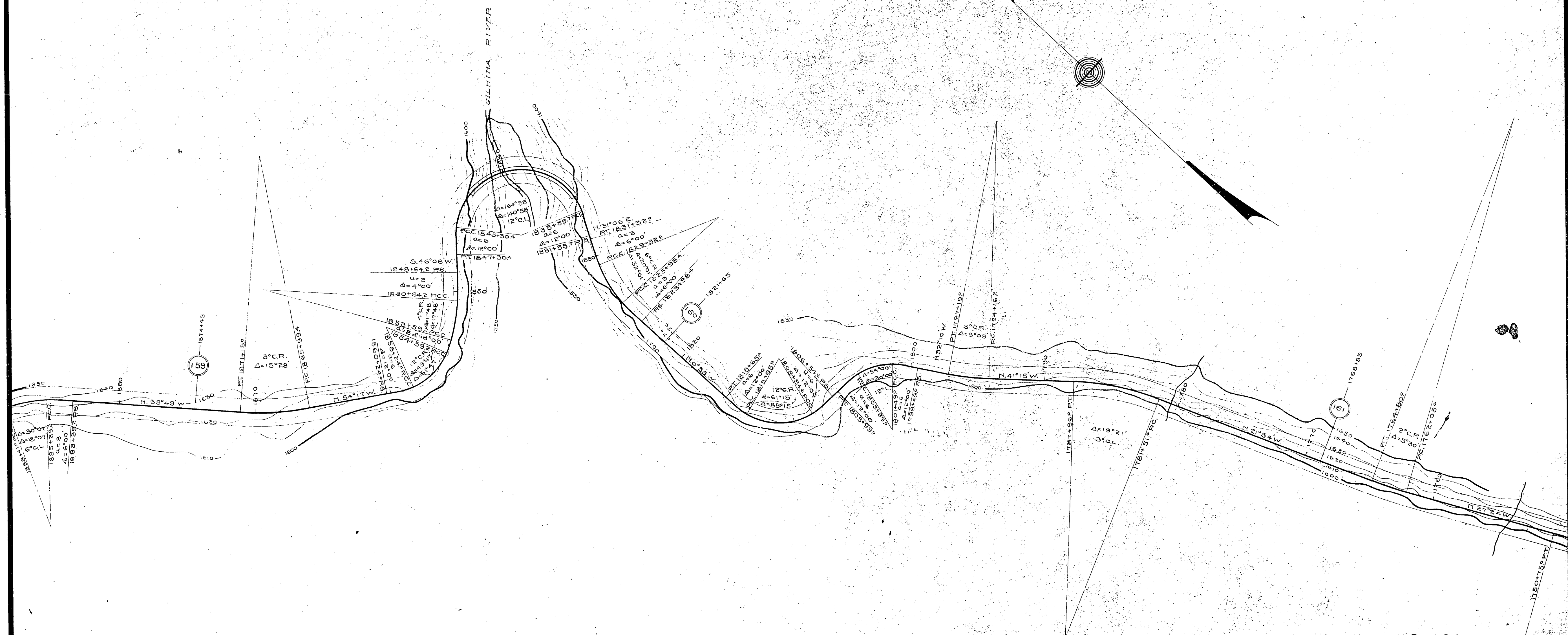
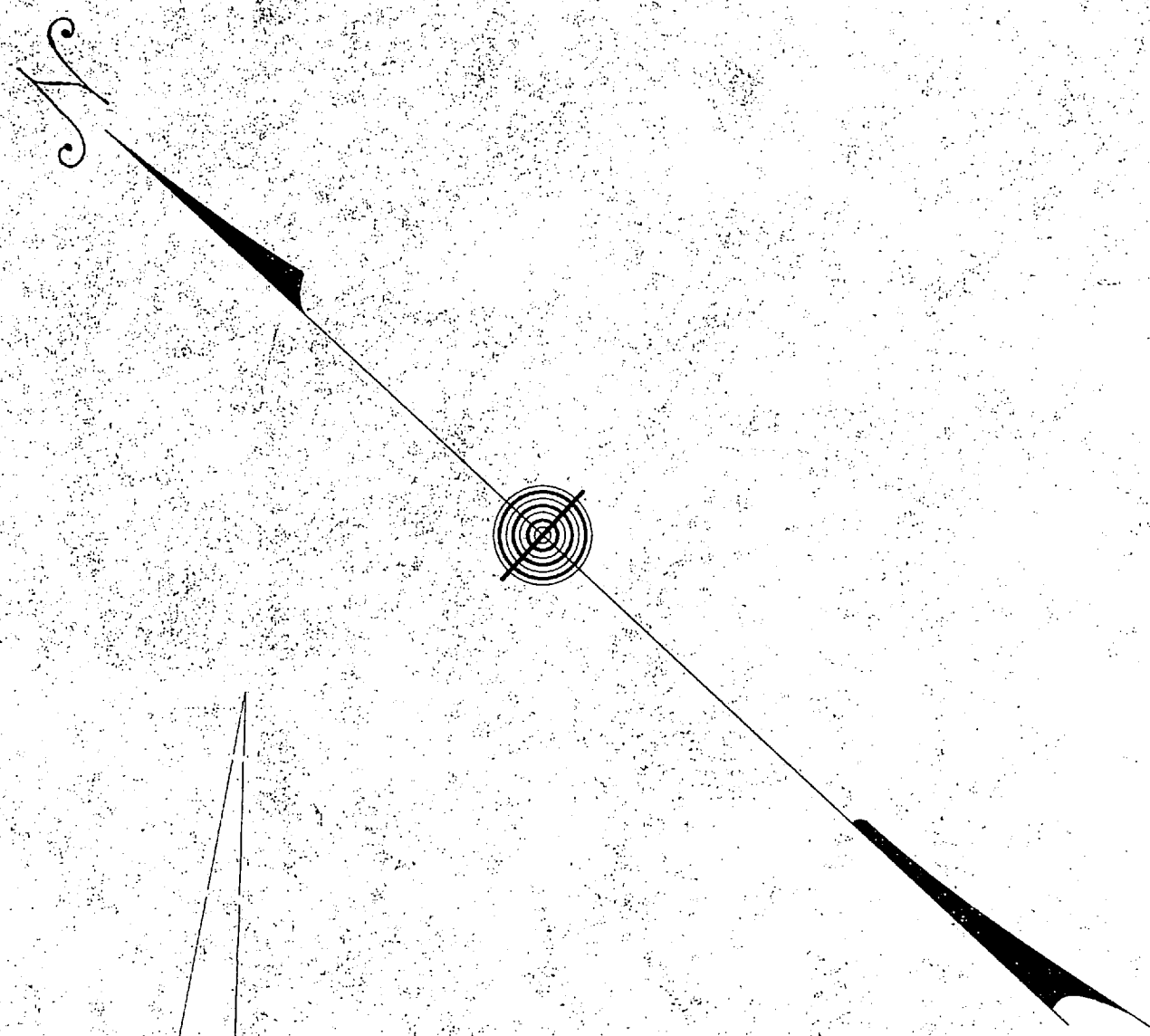
MILE 165-167
Sta 1560 to Sta 1445
CHITINA BRANCH
C. R. & N. W. Ry.
DEFINITE LOCATION 1909
Scale 1" = 400'



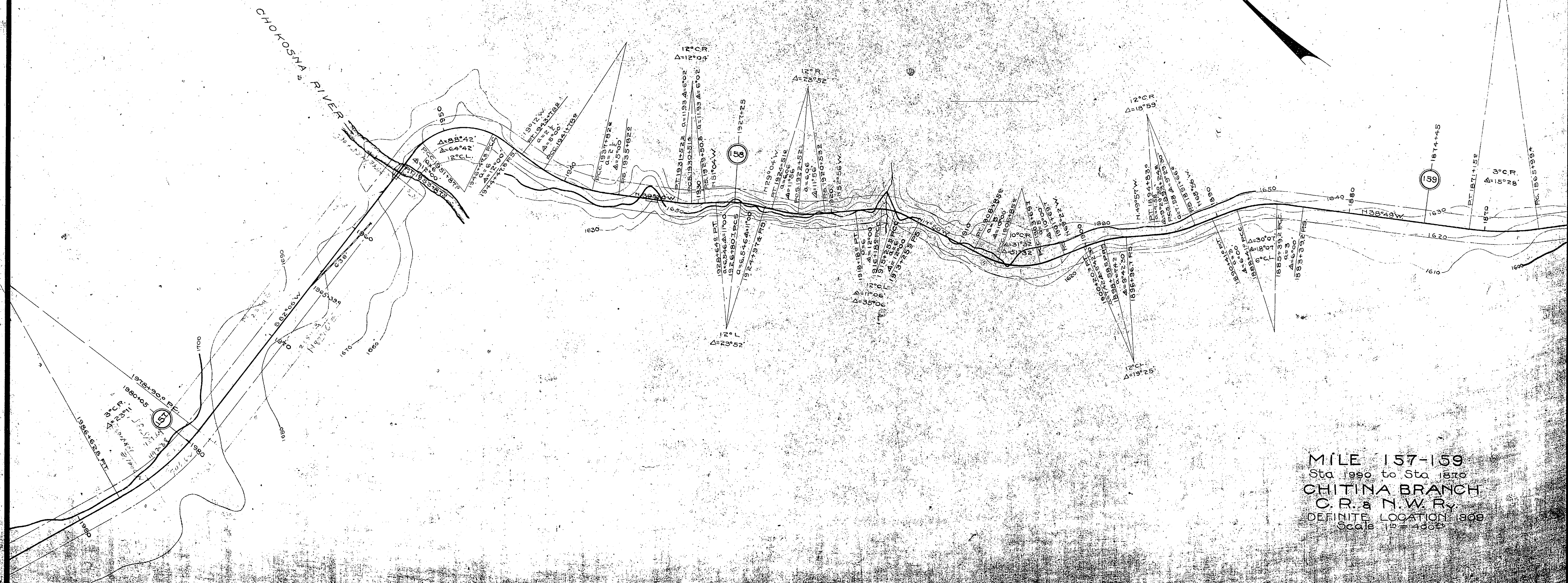
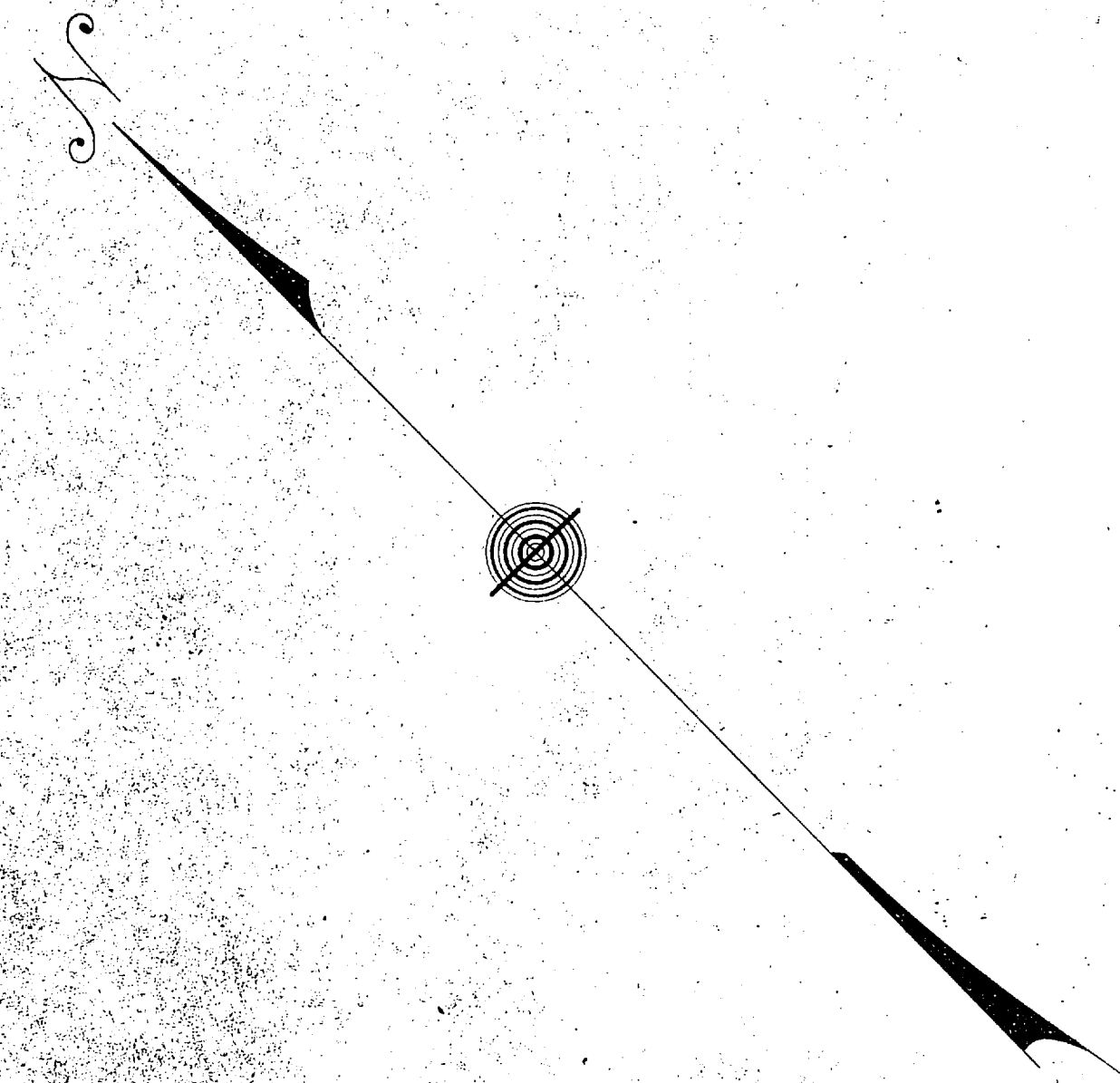
MILE 163-165
 Sta 1665 to Sta 1535
 CHITINA BRANCH
 C. R. & N. W. RY.
 DEFINITE LOCATION 1909
 Scale 1" = 400'



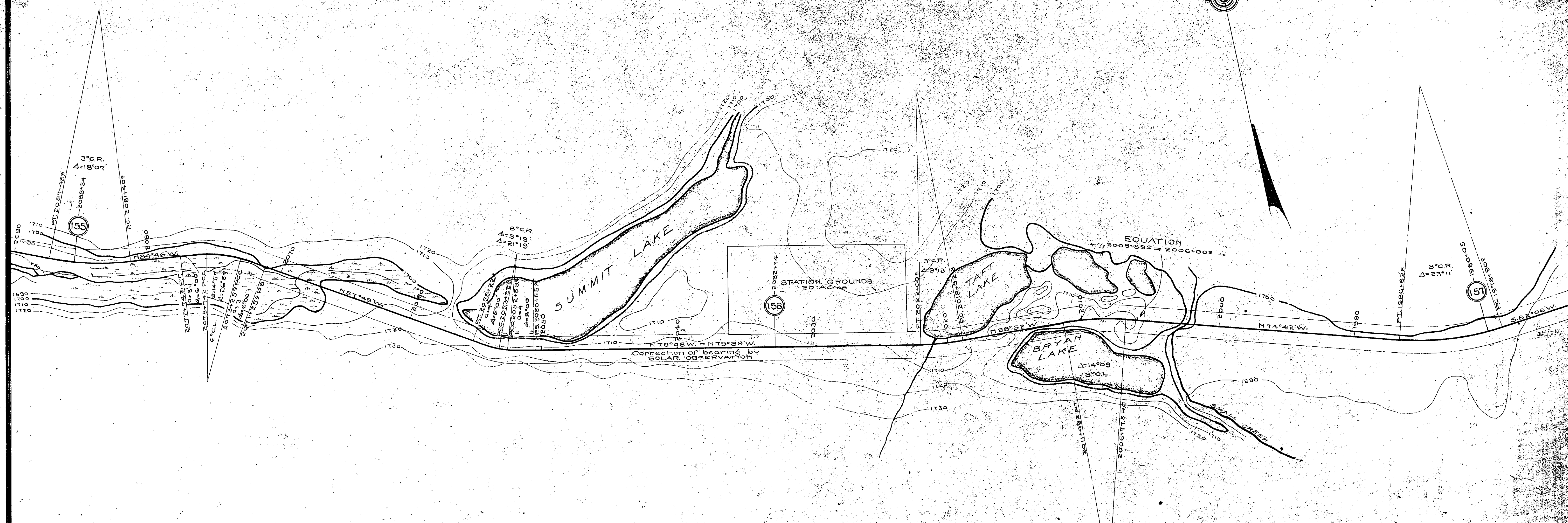
MILE 161-163
 Sta 1770 to Sta 1660
 CHITINA BRANCH
 C. R. & N. W. RY.
 DEFINITE LOCATION 1909
 Scale 1" = 400'



MILE 159-161
Sta 1885 to Sta 1755
CHITINA BRANCH
C. R. & N. W. Ry.
DEFINITE LOCATION 1909
Scale 1" = 400'



MILE 157-159
Sta 1990 to Sta 1870
CHITINA BRANCH
C.R. & N.W. Ry.
DEFINITE LOCATION 1908
Scale 1" = 400'



MILE 155-157
Sta 2080 to Sta 1975
CHITINA BRANCH
C. R. & N. W. RY.
DEFINITE LOCATION 1909
Scale 1" = 400'