

N
RAN
RAE

36
35

35

36
35

33

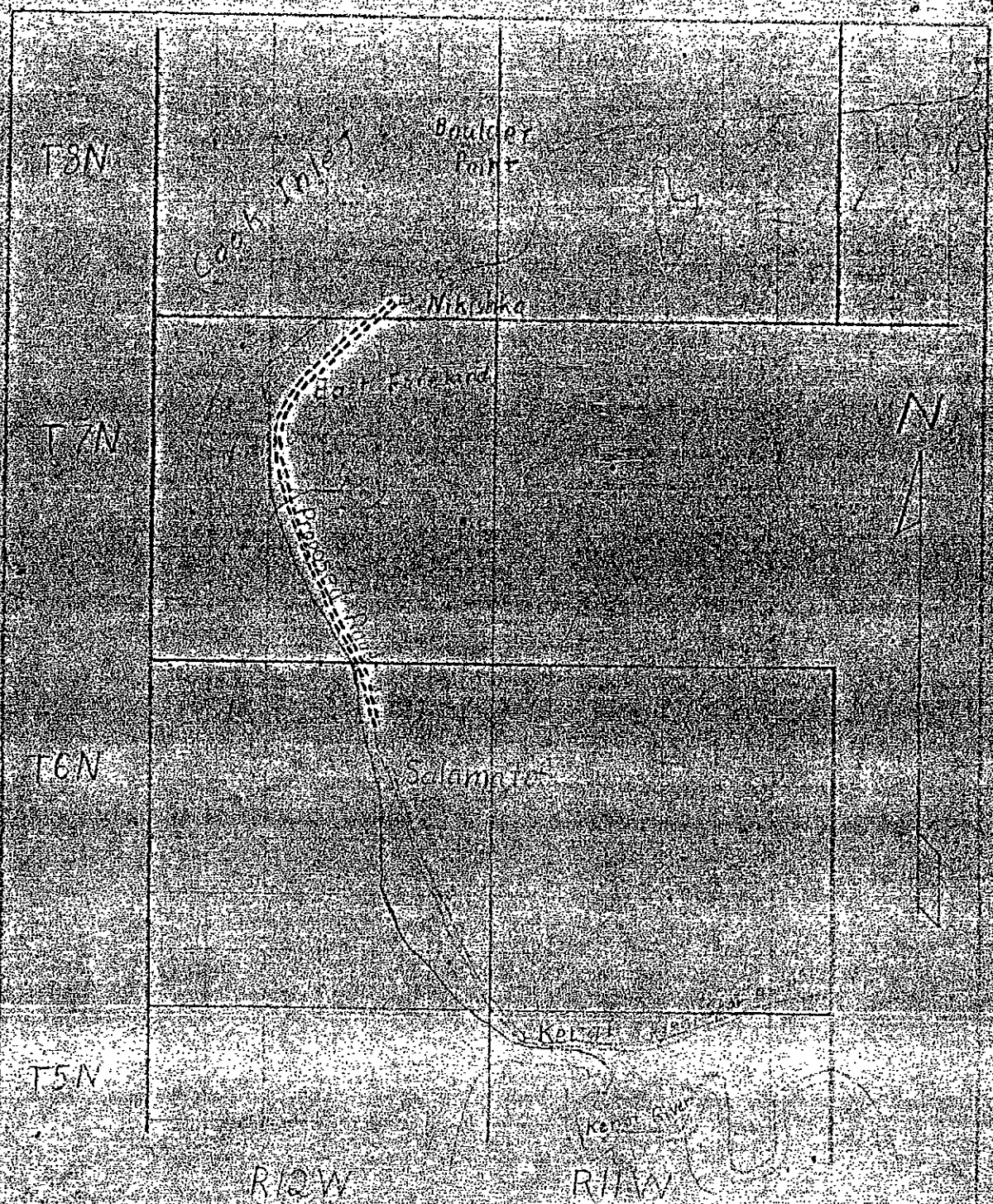
34

37

B.L.M.
Some fair agricultural & grazing
land available in this area. Also
suitable for poultry.

Department of the Interior
Alaska Road Commission
Location sketch
To accompany
Petition Reference No. 1
Scale 1" = 600'
Anchorage Alaska January 1950

by G.F.
sketch by 2/22



BEM.
 A strip of good land, 2 to 5 miles wide, extends from Salamatof Beach to Nikiska. They believe this road justified.

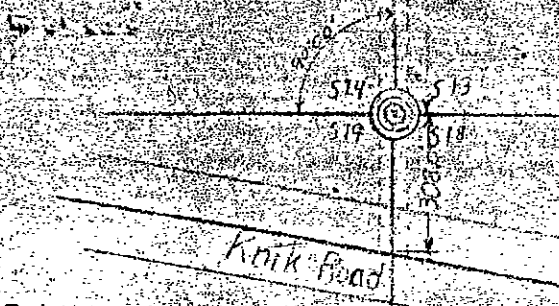
Department of the Interior
 Alaska Road Commission
 Location Sketch
 To Accompany
 Petition Reference No. 7
 Scale 1:160,000
 Anchorage, Alaska, June 1950

456 DU 512
 packed by 245

Section 13
S24

Proposed From Road

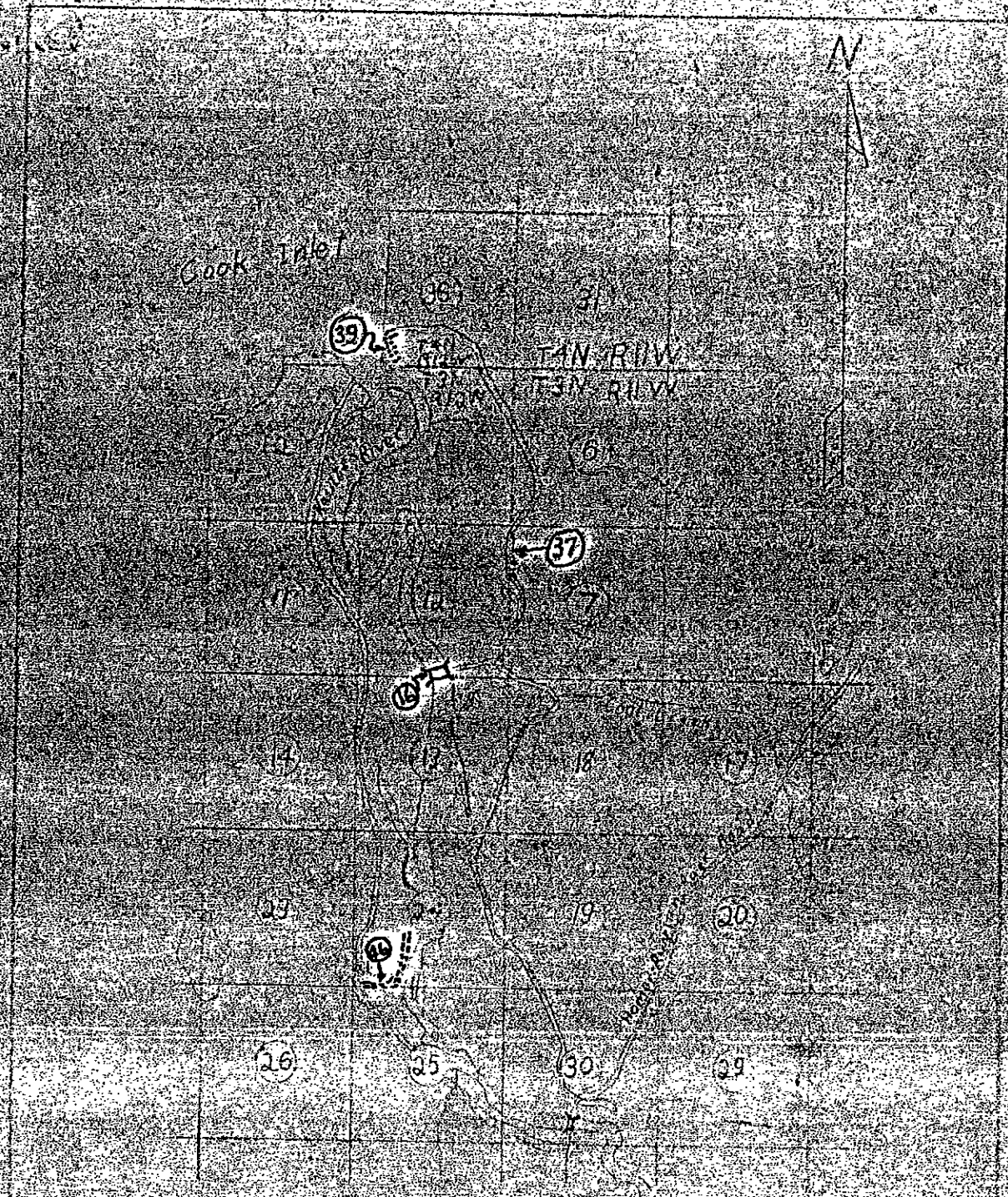
T16N
R2W



B.L.M.
Good land all through
this area.

checked by GF
checked by 1/24

Department of Interior
Alaska Road Commission
Location Sketch
To Accompany
Petition Reference No. 8
Scale 1"=400'
Anchorage Alaska January 1950



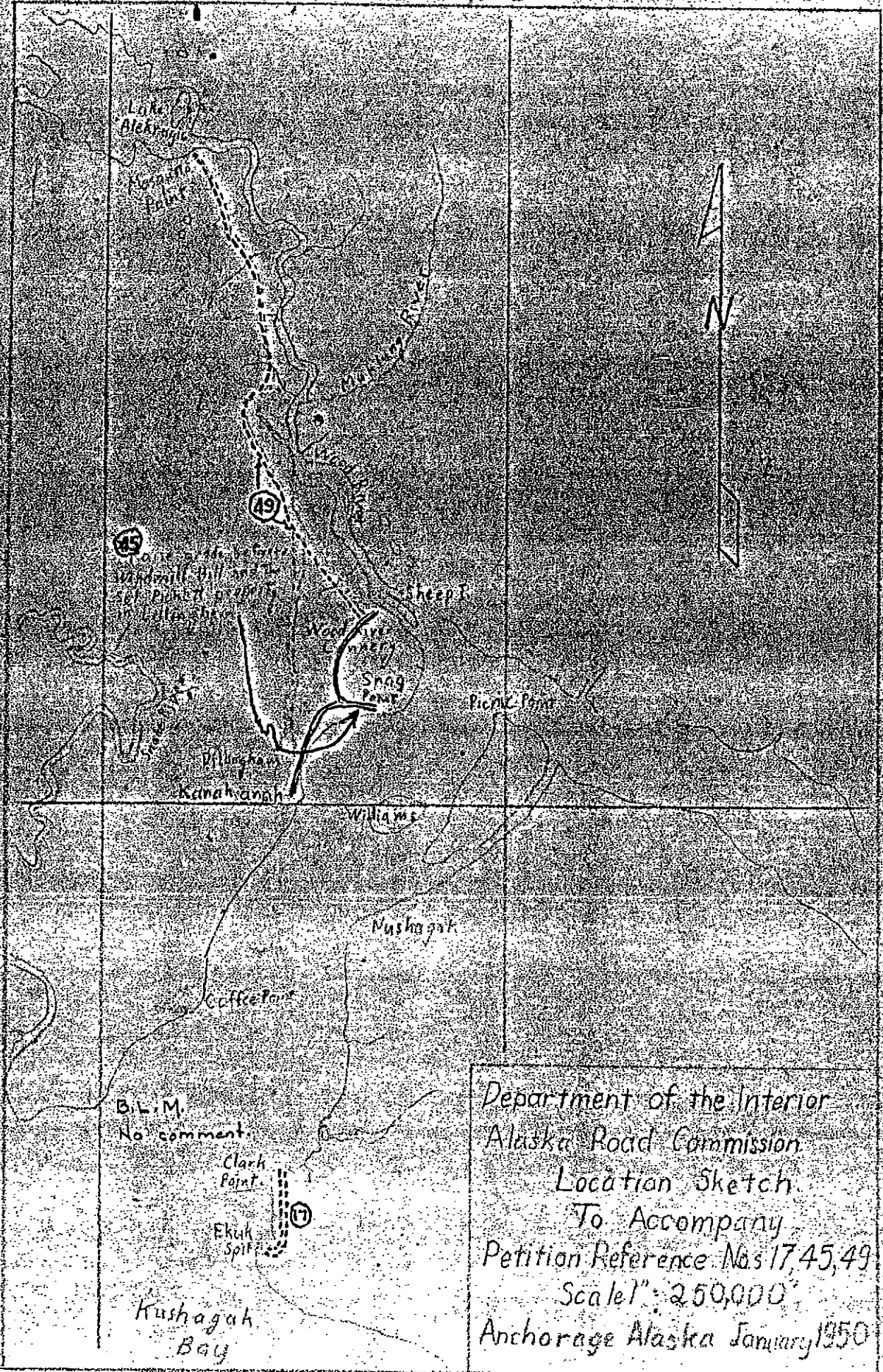
B.L.M.
Development in this area is justified

Department of the Interior
Alaska Road Commission
Location Sketch
To accompany
Petition Reference Nos 163/39/16
Scale 1" = 1 mile
Anchorage Alaska January, 1959

made by G.F.
checked by [signature]

158° 40'

158° 20'



59°

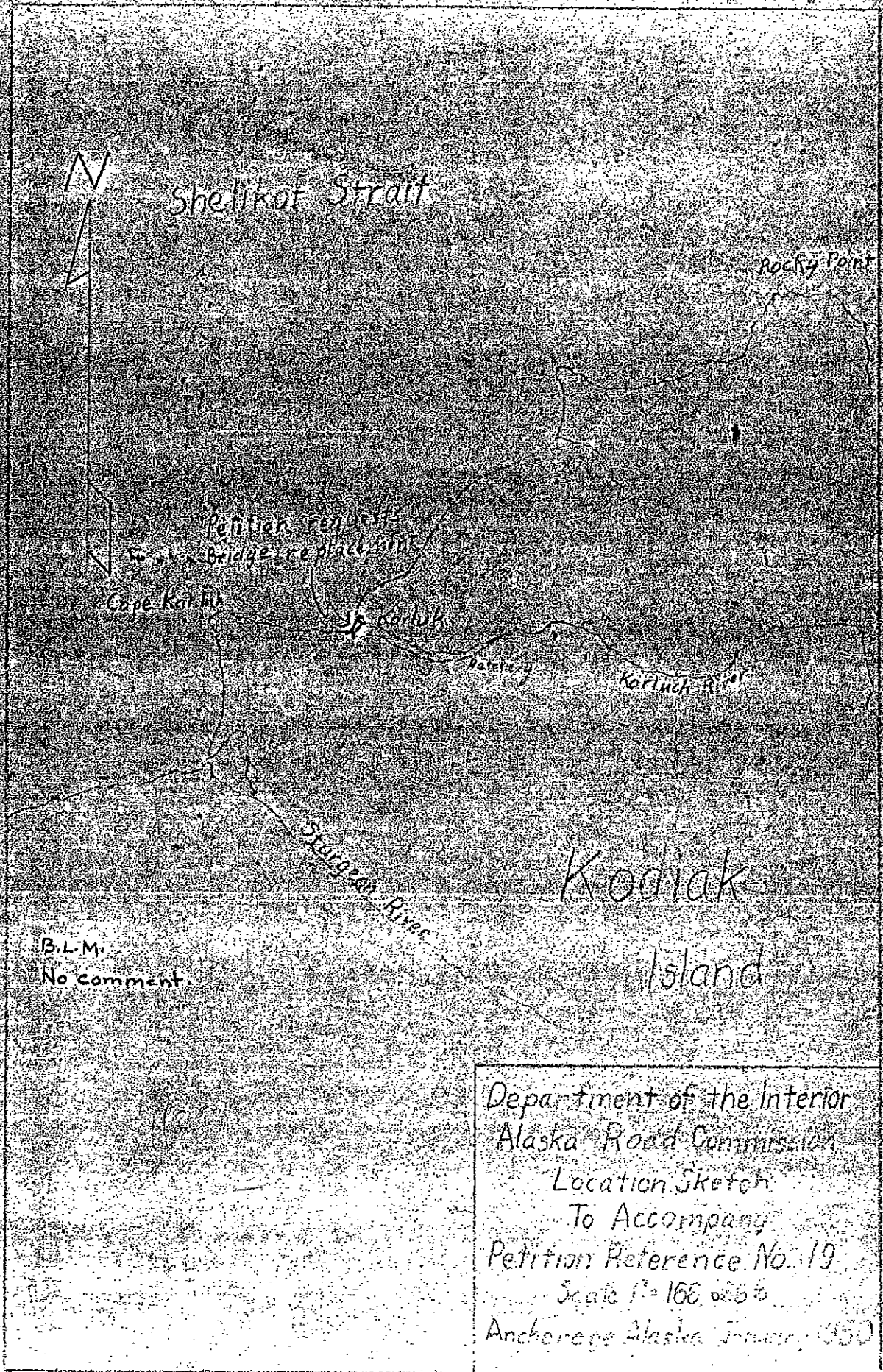
B.L.M.
No comment.

Clark Point
Ekuk Spit

Kushagak Bay

Department of the Interior
 Alaska Road Commission
 Location Sketch
 To Accompany
 Petition Reference Nos 17, 45, 49
 Scale 1" = 250,000'
 Anchorage Alaska January 1950

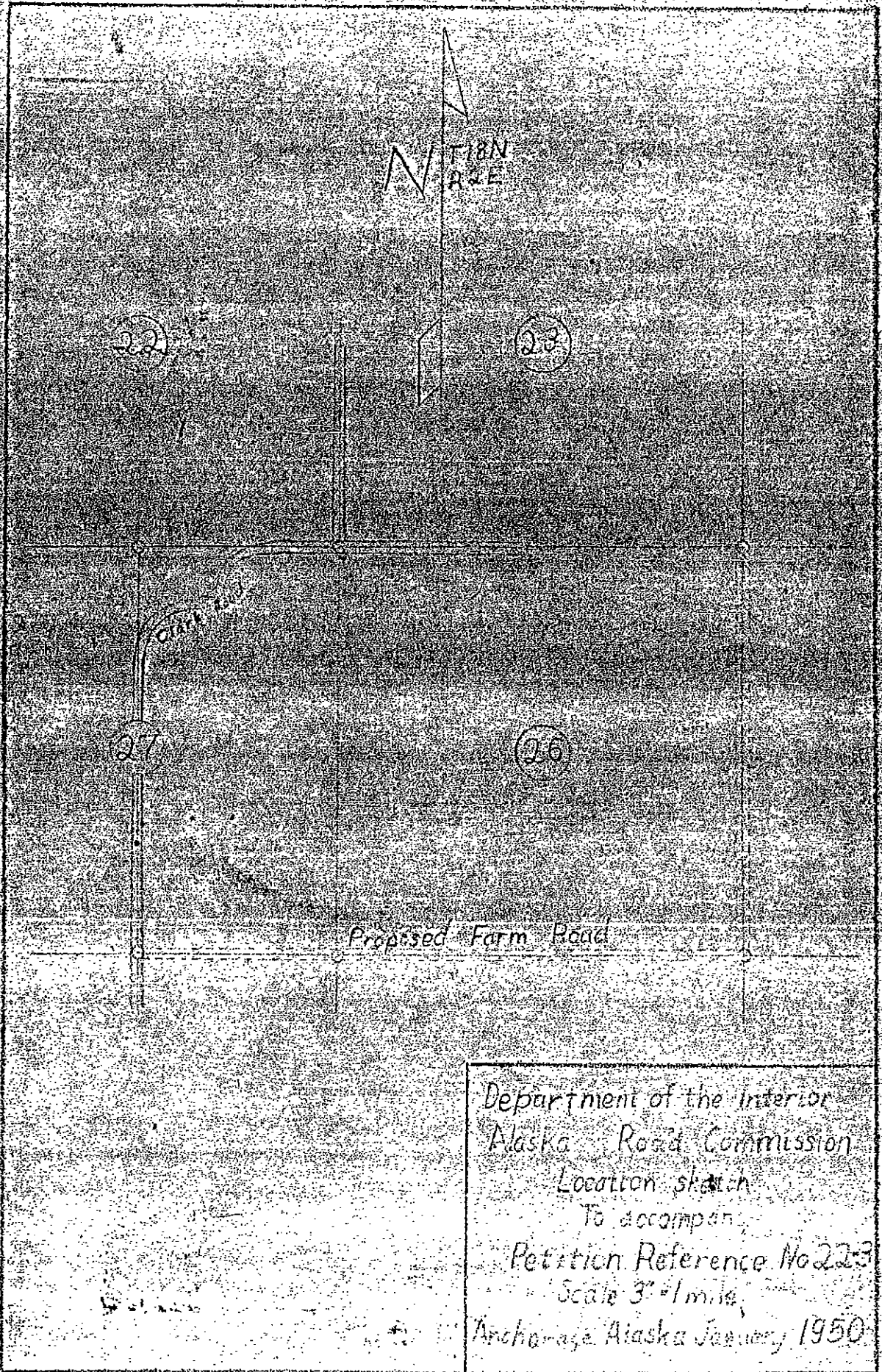
made by G.F.
checked by H.P.



B.L.M.
No comment.

Department of the Interior
Alaska Road Commission
Location Sketch
To Accompany
Petition Reference No. 19
Scale 1" = 168,000 ft
Anchorage Alaska January 1950

made by bit
checked by bit



N
NORTH
ARROW

22

23

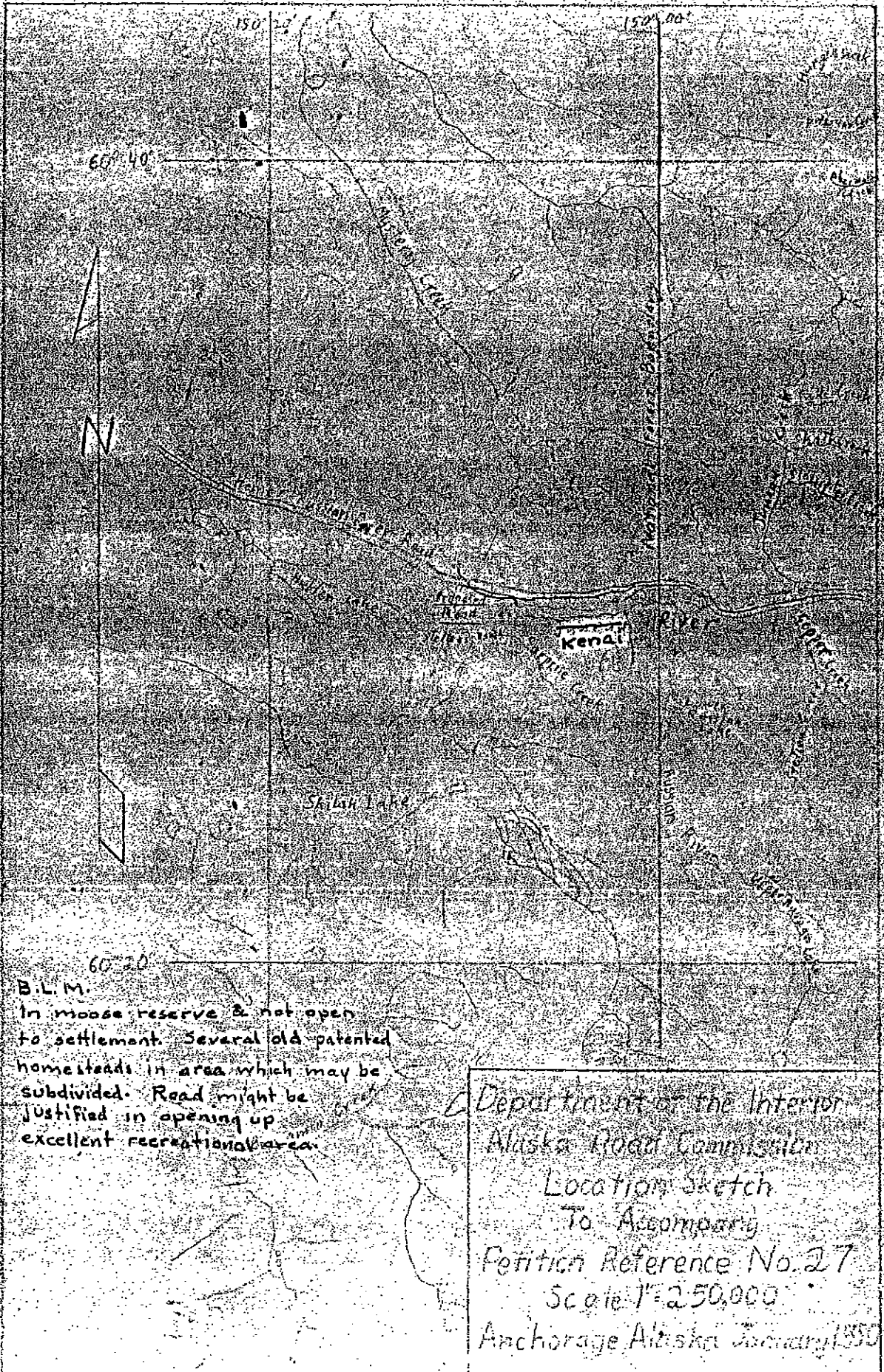
27

26

Proposed Farm Road

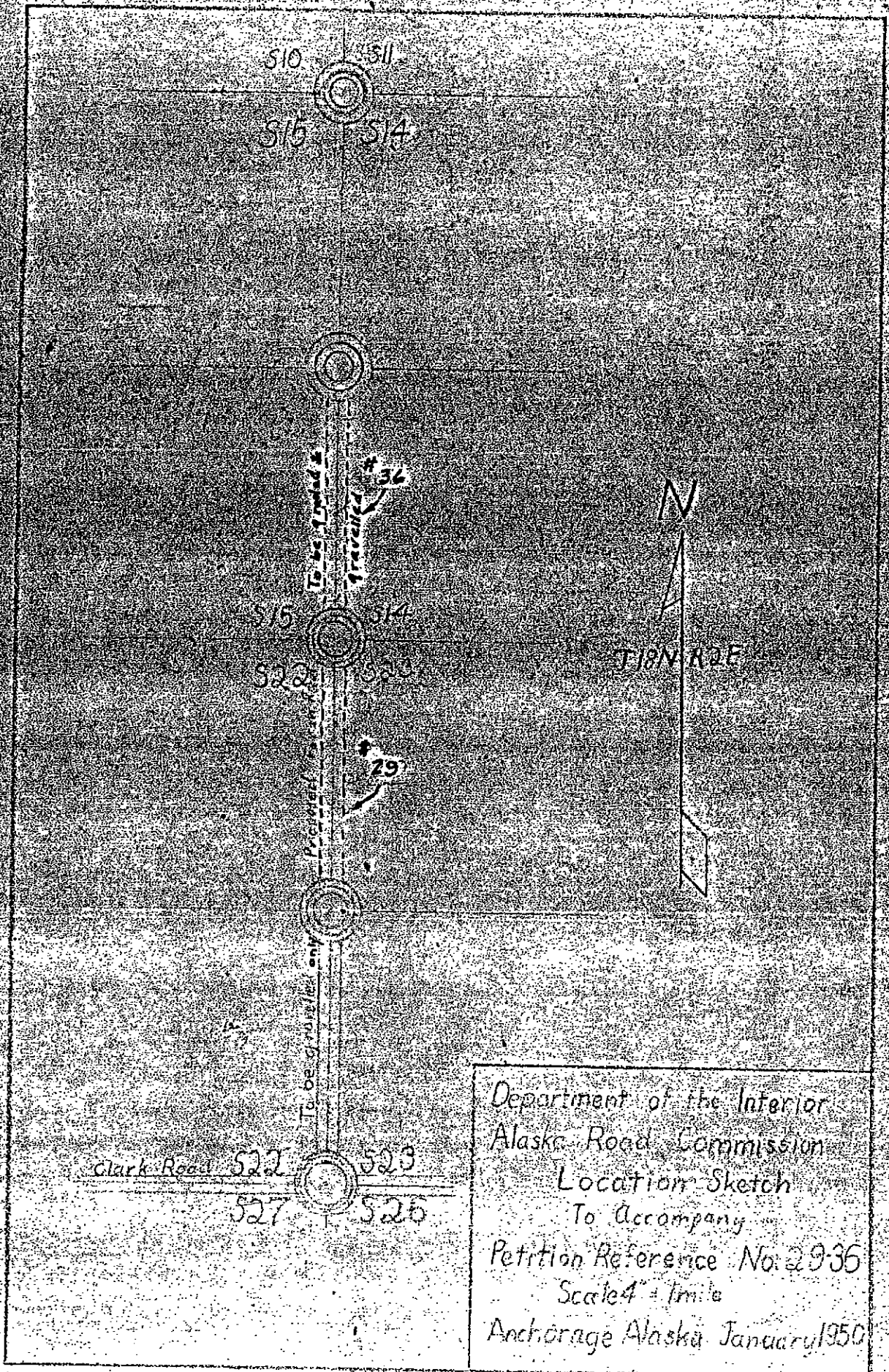
Department of the Interior
 Alaska Road Commission
 Location sketch
 To accompany
 Petition Reference No 223
 Scale 3" = 1 mile
 Anchorage Alaska January 1950

made by G.F.
 Checked by



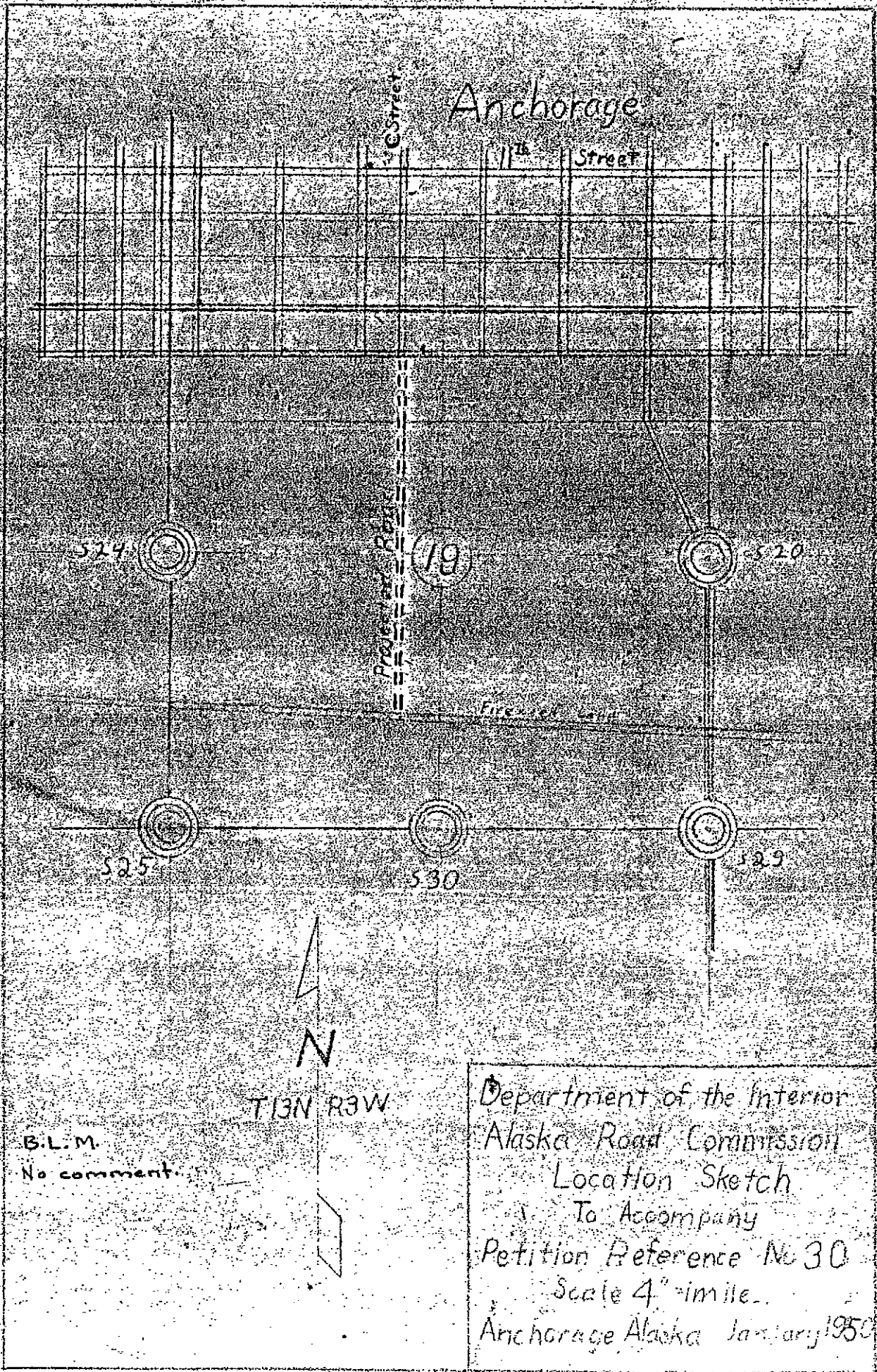
B.L.M.
In moose reserve & not open
to settlement. Several old patented
homesteads in area which may be
subdivided. Road might be
justified in opening up
excellent recreational area.

Made by G.E.
checked by G.E.



Department of the Interior
 Alaska Road Commission
 Location Sketch
 To accompany
 Petition Reference No. 2936
 Scale 4" = 1 mile
 Anchorage Alaska January 1950

04 47
 checked by 277



Anchorage

C Street

11th Street

Proposed Road

Fire-see Canal

524

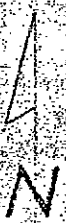
519

520

525

530

529



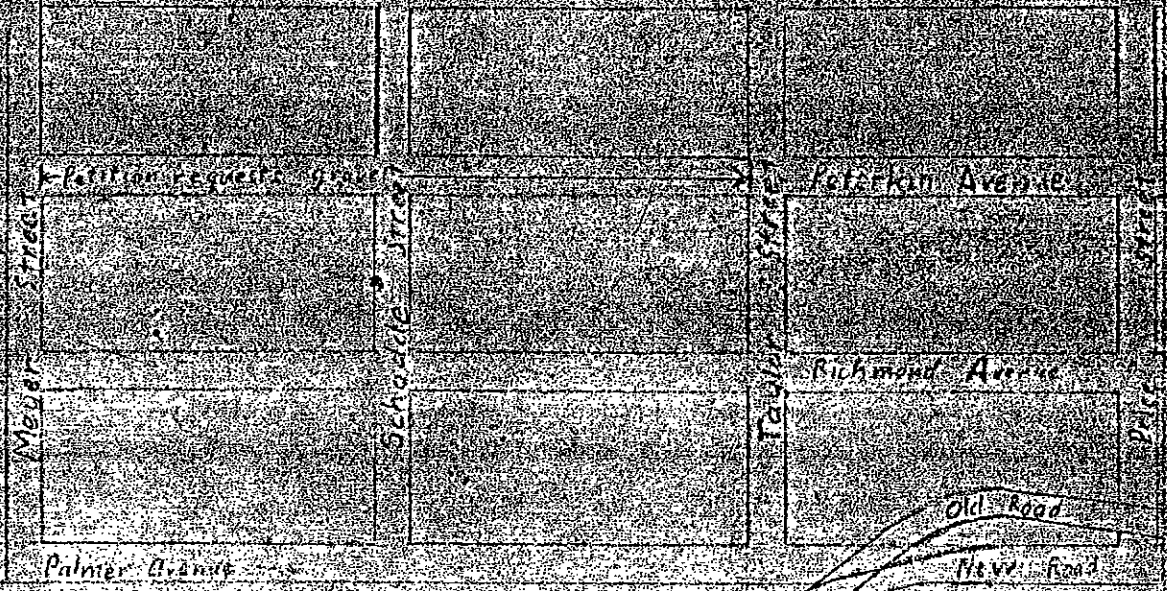
T13N R3W

B.L.M.
No comment.

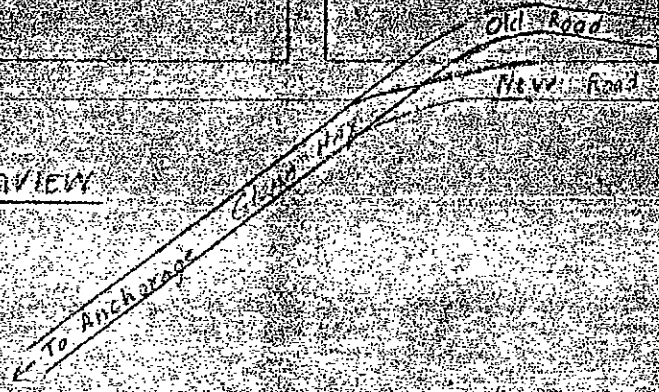
Department of the Interior
Alaska Road Commission
Location Sketch
To Accompany
Petition Reference No 30
Scale 4" = 1 mile.
Anchorage Alaska January 1950

Made by GE
Checked by RST

T13N R3W



Mountainview



Work performed 1949 by residents involved.

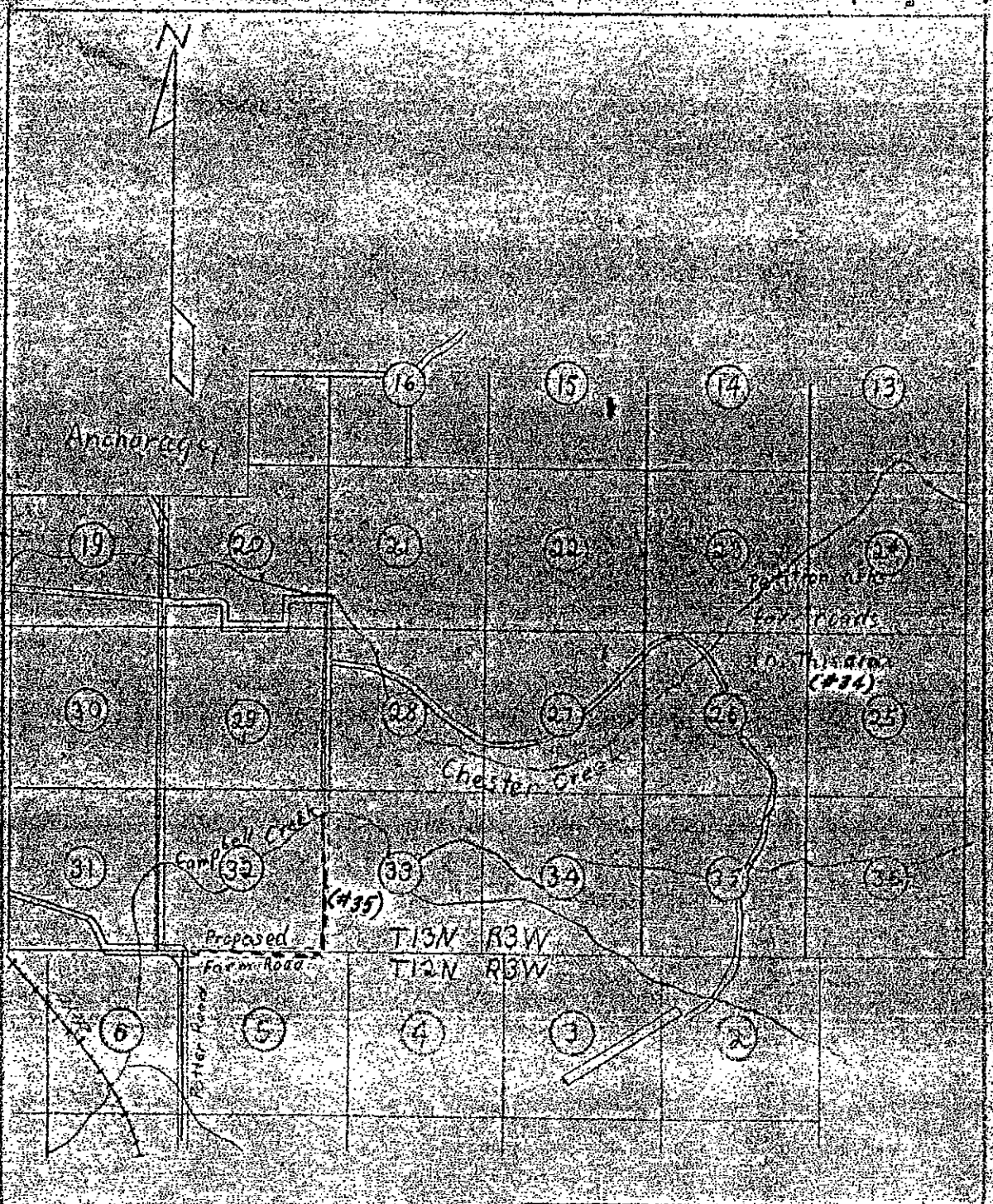
Department of the Interior
 Alaska Road Commission
 Location Sketch
 To Accompany
 Petition Reference No. 31
 Scale 1" = 200'
 Anchorage Alaska January 1950

made by G.F.
 checked by [signature]



B.L.M.
No comment

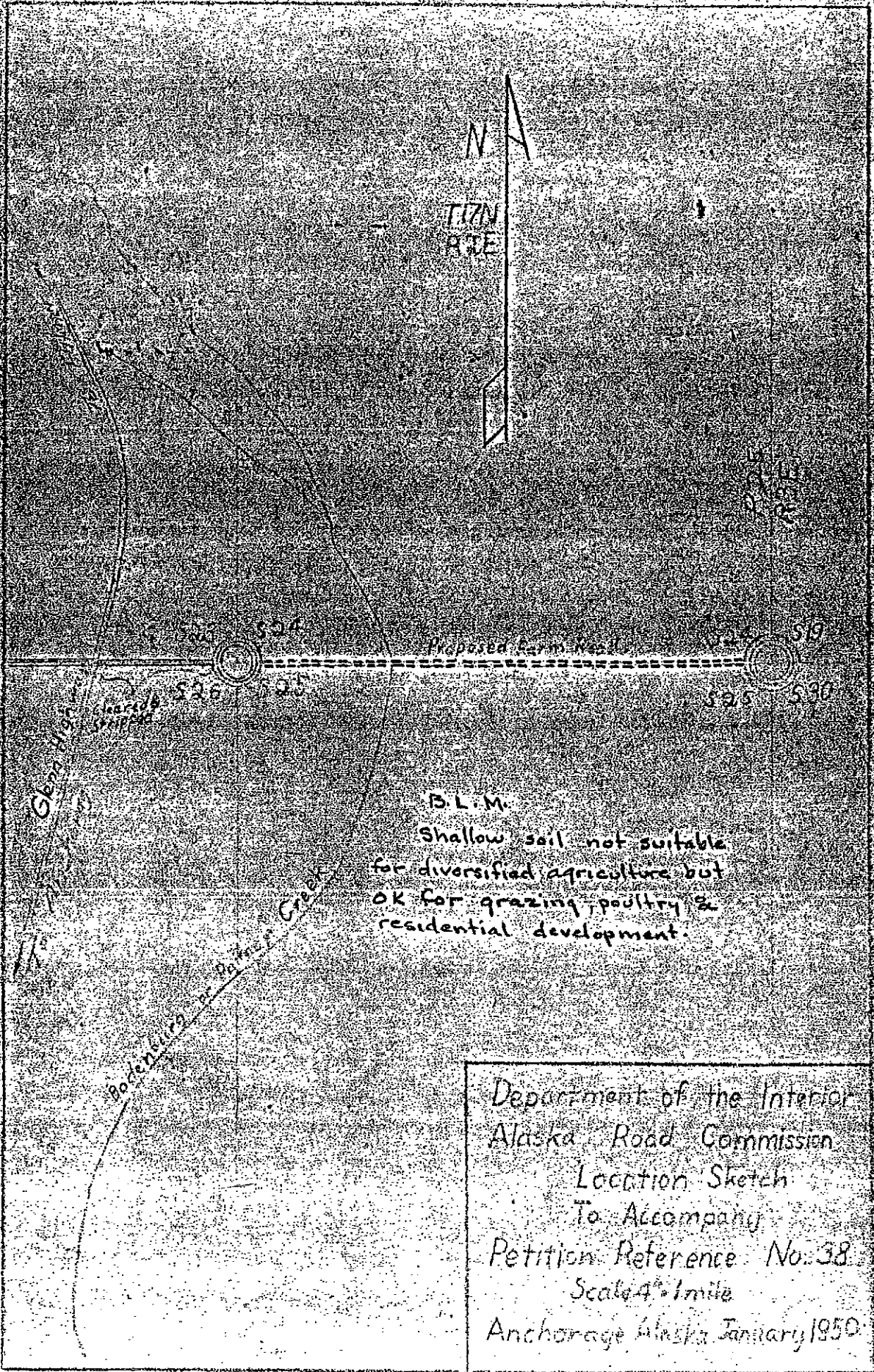
Department of the Interior
Alaska Road Commission
Location Sheet
to accompany
Petition, Resubmit W.E.S.
N.H. to Seale
Alaska January 1950



BLM.
Roads justified to open up area.

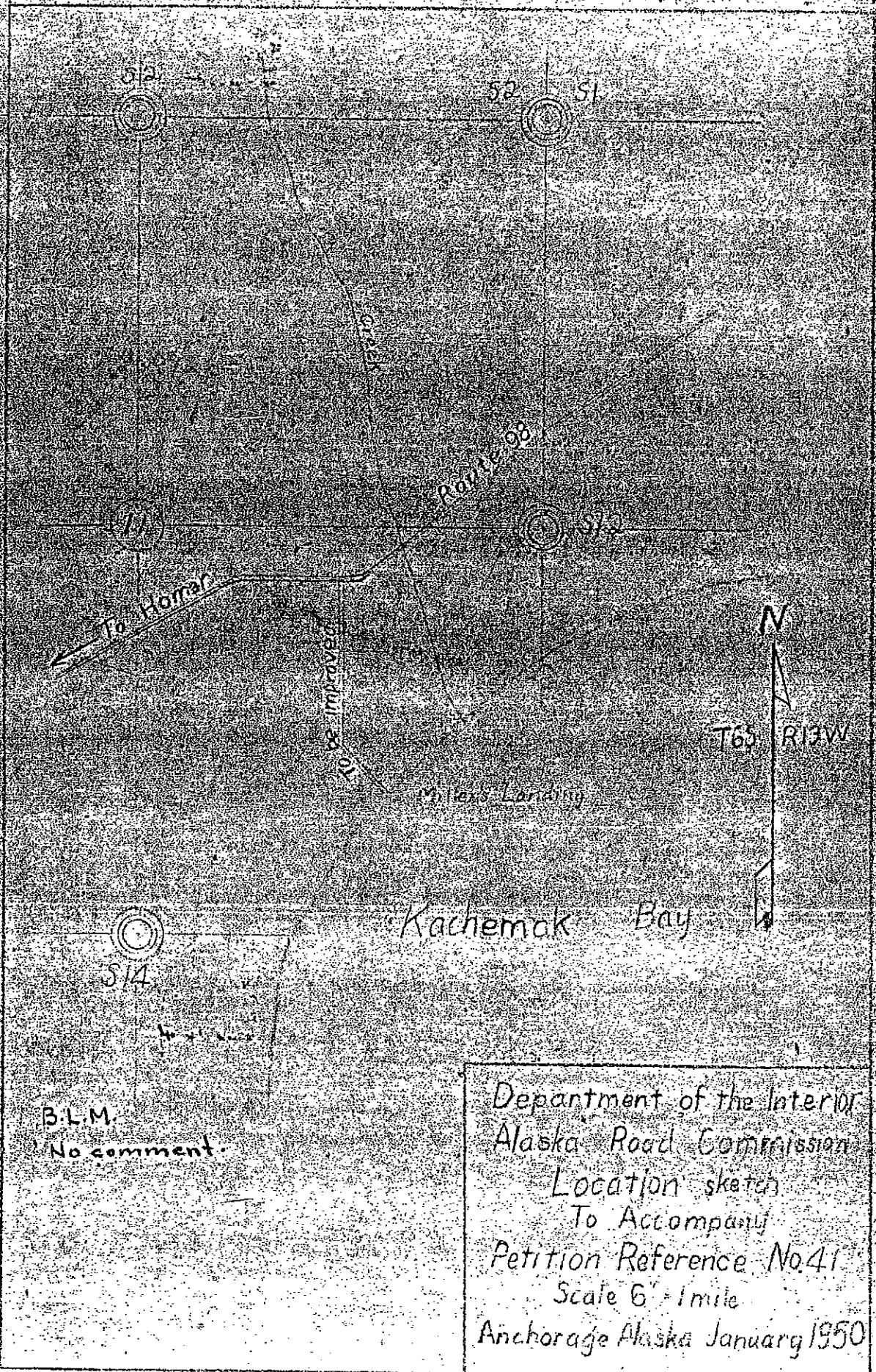
Department of the Interior
Alaska Road Commission
Location Sketch
To Accompany
Petition Reference Nos. 34-5
Scale 1" = 5000'
Anchorage Alaska January 1950

made by G.F.
checked by G.F.



made by: S.F.
 checked by: S.F.

Department of the Interior
 Alaska Road Commission
 Location Sketch
 To Accompany
 Petition Reference No. 38
 Scale 4" = 1 mile
 Anchorage Alaska, January 1950



B.L.M.
No comment.

Department of the Interior
Alaska Road Commission
Location sketch
To Accompany
Petition Reference No. 41
Scale 6" = 1 mile
Anchorage Alaska January 1950

made by GF
checked by NIF