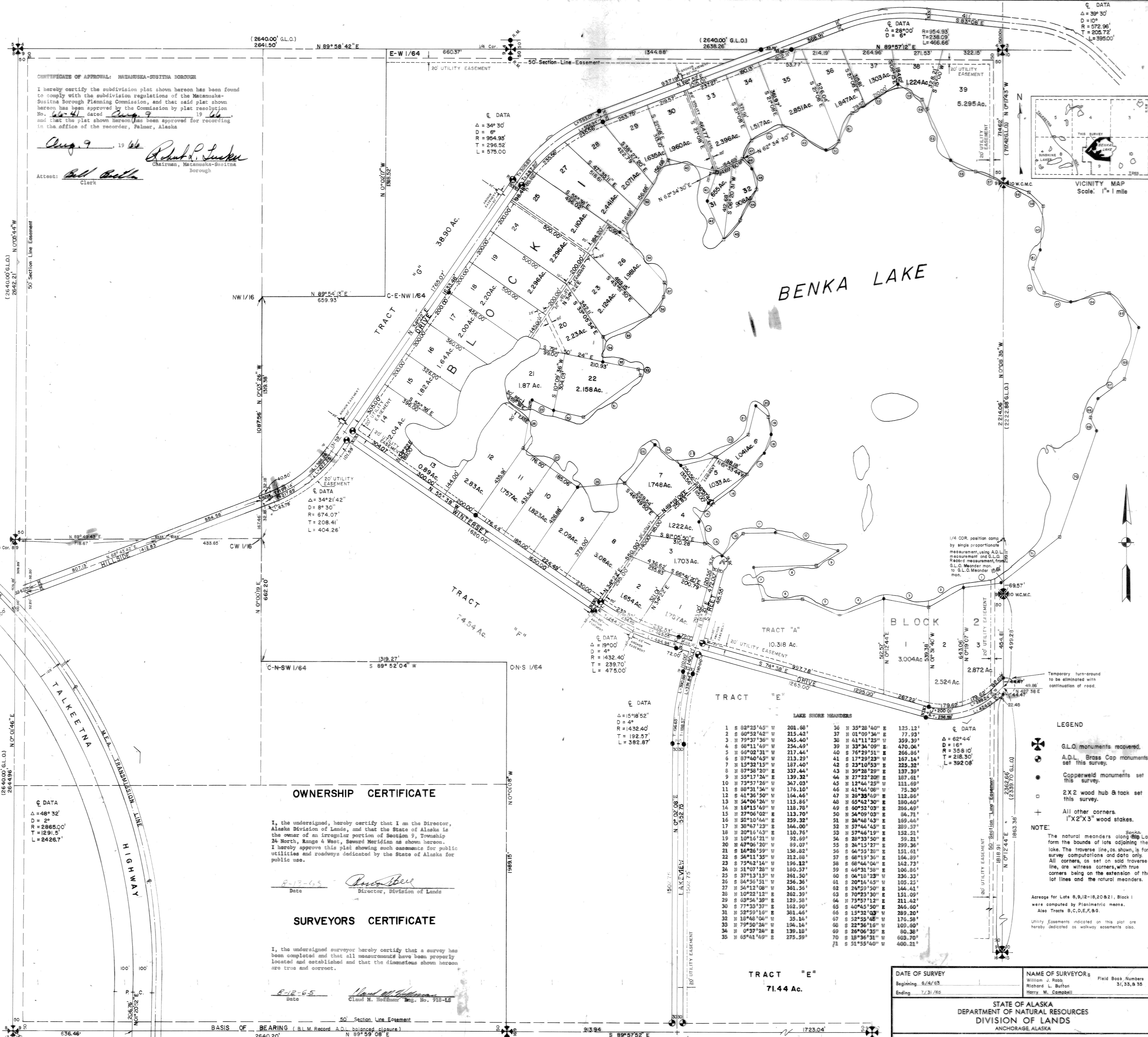


CERTIFICATE OF APPROVAL: MATANUSKA-SUSITNA BOROUGH
 I hereby certify the subdivision plat shown hereon has been found to comply with the subdivision regulations of the Matanuska-Susitna Borough Planning Commission, and that said plat shown hereon has been approved by the Commission by plat resolution No. 44-41 dated Aug. 9, 1965, and that the plat shown hereon has been approved for recording in the office of the recorder, Palmer, Alaska.

Attest: *Richard P. Lusk*
 Chairman, Matanuska-Susitna Borough
 Clerk



Q DATA
 Δ = 48° 32'
 D = 2'
 R = 2865.00'
 T = 1291.5'
 L = 2426.7'

OWNERSHIP CERTIFICATE

I, the undersigned, hereby certify that I am the Director, Alaska Division of Lands, and that the State of Alaska is the owner of an irregular portion of Section 9, Township 24 North, Range 4 West, Seward Meridian as shown hereon. I hereby approve this plat showing such easements for public utilities and roadways dedicated by the State of Alaska for public use.

Date: 8-13-65
 Director, Division of Lands

SURVEYORS CERTIFICATE

I, the undersigned surveyor hereby certify that a survey has been completed and that all measurements have been properly located and established and that the dimensions shown hereon are true and correct.

Date: 8-12-65
 Claude W. Hoffmann Reg. No. 718-18

LAKE SHORE MEANDERS

1	S 82°25'45" W	201.68'	36	N 35°28'40" E	125.12'
2	S 60°58'42" W	215.42'	37	N 01°09'34" E	77.93'
3	N 79°31'36" E	245.40'	38	N 41°11'25" W	359.39'
4	S 68°11'49" W	254.49'	39	N 33°34'09" E	470.04'
5	S 66°02'31" W	217.44'	40	S 76°29'51" E	266.86'
6	S 87°46'43" W	213.29'	41	S 17°29'23" W	167.14'
7	N 15°32'15" W	187.40'	42	S 23°10'53" E	225.32'
8	S 87°58'12" W	337.44'	43	S 39°28'19" E	137.39'
9	N 55°17'24" W	139.32'	44	N 27°22'20" E	187.01'
10	N 73°57'26" W	347.03'	45	N 12°46'25" W	111.69'
11	S 88°31'34" W	176.10'	46	N 41°44'08" W	75.30'
12	N 41°36'13" W	164.44'	47	N 20°35'20" E	112.06'
13	N 54°06'12" W	115.86'	48	N 65°42'30" E	180.40'
14	N 16°15'49" W	118.78'	49	S 60°52'03" E	266.49'
15	N 27°06'02" E	113.70'	50	N 54°09'03" E	84.71'
16	N 32°10'44" W	259.32'	51	N 24°48'43" E	169.44'
17	N 38°47'23" E	144.00'	52	N 57°44'45" W	164.89'
18	N 20°16'43" E	110.76'	53	N 57°46'19" E	152.51'
19	N 10°16'21" W	92.69'	54	S 28°33'50" W	39.21'
20	N 47°06'20" W	89.07'	55	S 24°15'27" W	299.36'
21	N 16°25'59" W	158.22'	56	S 64°53'20" E	151.61'
22	S 54°11'55" W	212.88'	57	N 68°19'36" E	164.89'
23	N 75°42'14" W	196.12'	58	N 68°44'04" E	142.73'
24	N 51°07'28" W	180.37'	59	N 46°31'58" E	106.86'
25	S 37°13'15" W	261.50'	60	N 04°18'23" W	236.33'
26	N 64°56'13" W	256.36'	61	S 20°14'45" W	105.25'
27	N 54°12'08" W	361.56'	62	N 24°59'50" E	144.41'
28	N 10°22'12" E	262.39'	63	N 70°23'30" E	151.09'
29	S 63°54'39" W	129.38'	64	N 75°57'12" E	211.42'
30	S 77°23'53" W	162.30'	65	N 40°45'50" E	246.60'
31	N 52°59'16" W	381.46'	66	N 15°32'13" W	289.20'
32	N 18°48'04" W	35.14'	67	S 52°55'48" W	176.58'
33	N 79°30'24" W	194.14'	68	N 22°36'16" W	109.60'
34	N 0°37'24" E	139.18'	69	S 26°06'35" E	80.38'
35	N 65°48'49" E	275.59'	70	N 12°36'31" W	683.70'
			71	S 51°55'40" W	400.21'

TRACT "E"
 71.44 Ac.

DATE OF SURVEY	Beginning 8/4/65	NAME OF SURVEYORS	William J. Robb Richard L. Button Harry M. Campbell
	Ending 7/31/66	Field Book Numbers	31, 35, 38

STATE OF ALASKA
 DEPARTMENT OF NATURAL RESOURCES
 DIVISION OF LANDS
 ANCHORAGE, ALASKA

BENKA LAKE ALASKA SUBDIVISION

DRWN. BY: R. L. BUTTON
 APPROVAL RECOMMENDED: Claude W. Hoffmann
 Chief Cadastral Engineer

DATE APPROVED: Aug. 13, 1965
 APPROVED: Roscoe E. Ball
 Director of Lands

SCALE: 1" = 200'
 CHECKED: ANC
 FILE NO. 54-50

DPM

COPY RECORDED-FILED
 TALKEETNA REC. DIST.
 DATE 8-22-65
 TIME 1:10 P.M.
 REGISTERED TO 51574 25/12/65

TALKEETNA 8-19-65
 I.R.M. MAIL
 STATE OF ALASKA

BENKA LAKE ALASKA SUBDIVISION
 SITUATE SEC. 9 T. 24N. R. 4W. S.M.
 TOTAL AREA 296.356 ACRES

6/21/66	Amend & Utility Easements	J. V. [unclear]
5/24/66	Eliminated Tracts "D", "C", "O" This Survey	NCS [unclear]
9/16/65	Ret. Mon. added at 1/4 Cor. Section 9 & 4	RLS [unclear]
8/31/65	Corr. Dist. & Big South Bdry. L.S.B.-1.	D. G. C. [unclear]
	DATE REVISION	BY