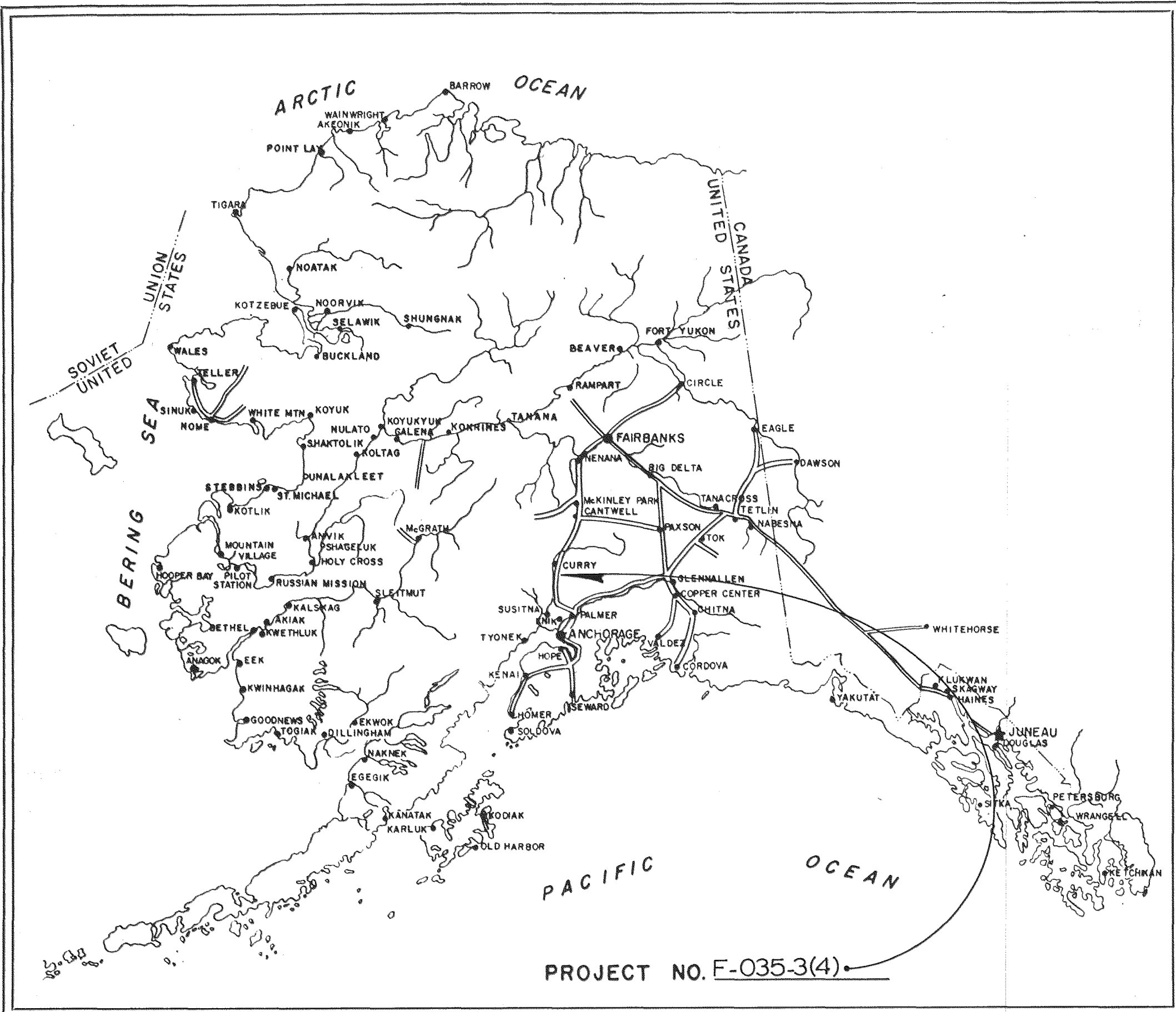


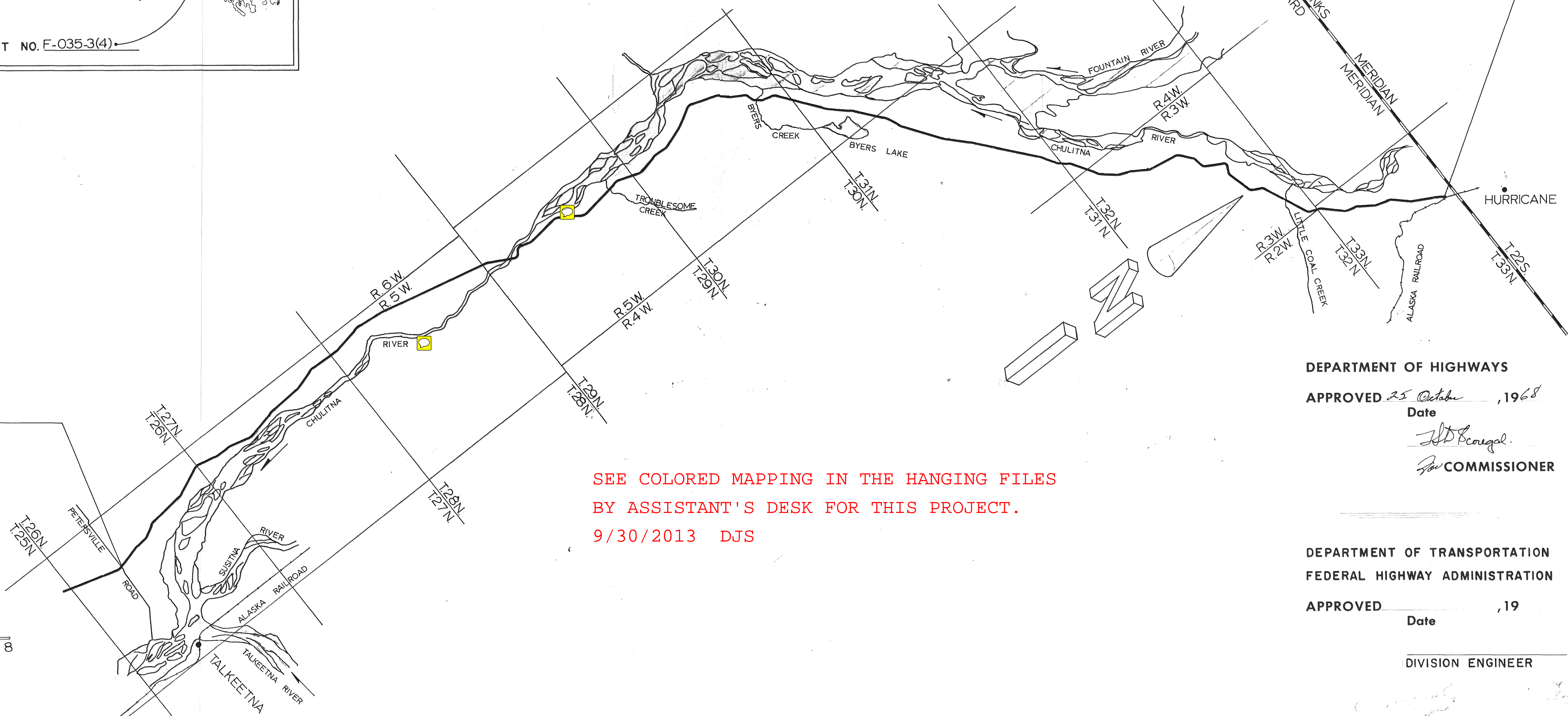
STATE OF ALASKA DEPARTMENT OF HIGHWAYS

RIGHT OF WAY MAP ALASKA PROJECT F-035-3(4) PALMER-CANTWELL HIGHWAY

PETERSVILLE ROAD TO ALASKA RAILROAD

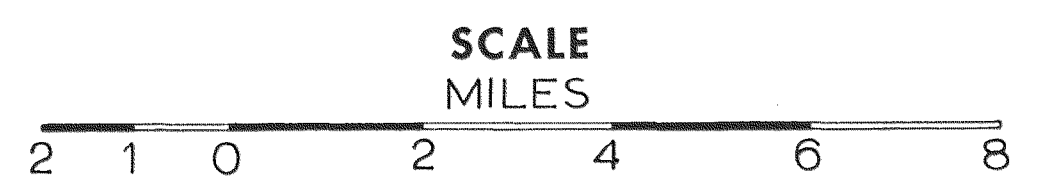


END PROJECT
STA 134+00



BEGIN PROJECT
STA 868+50

PROJECT LENGTH 54.176 MI.

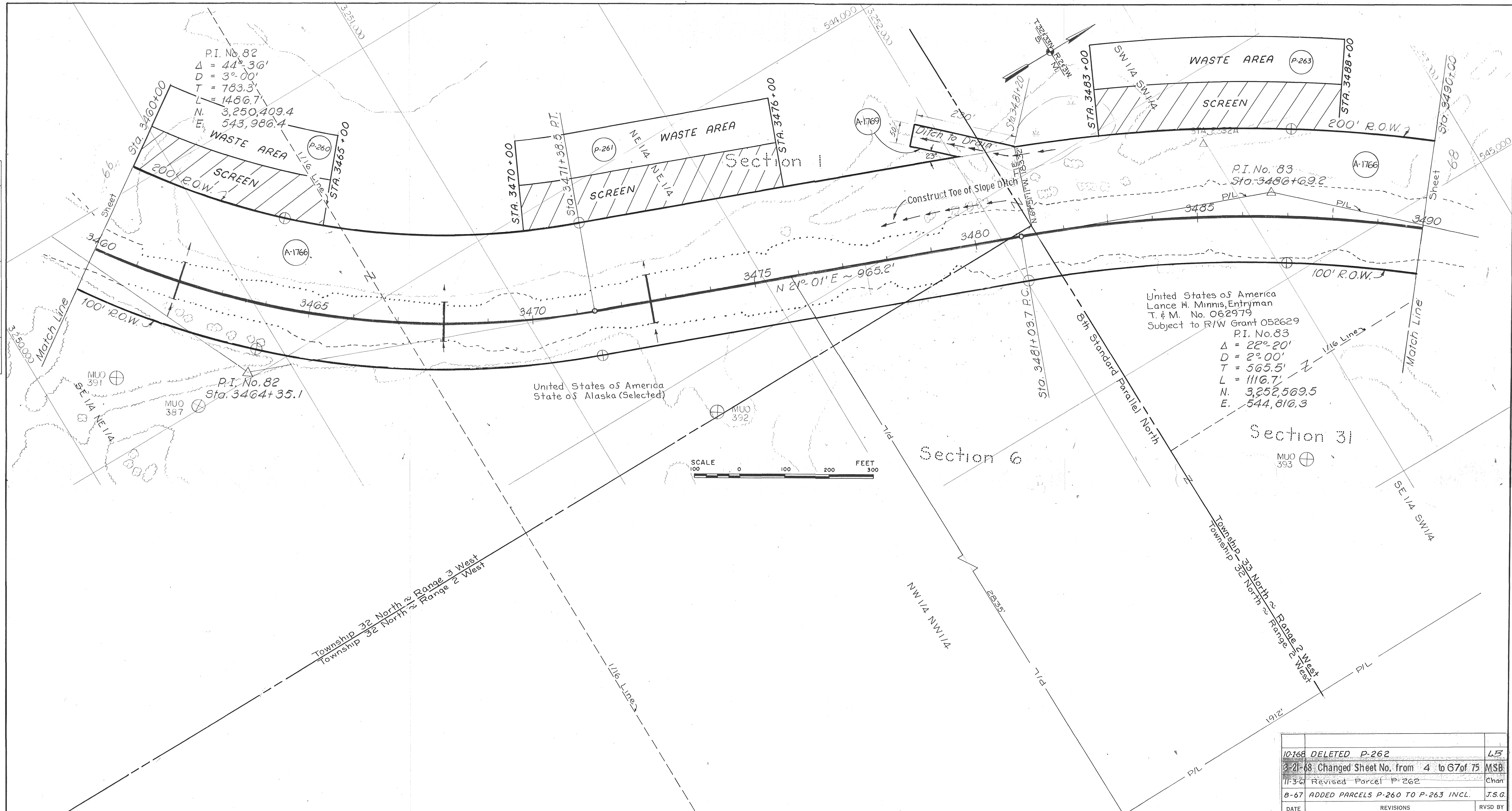


SEE COLORED MAPPING IN THE HANGING FILES
BY ASSISTANT'S DESK FOR THIS PROJECT.
9/30/2013 DJS

DEPARTMENT OF HIGHWAYS
APPROVED 25 October, 1968
Date
J.D. Bourgal
COMMISSIONER

DEPARTMENT OF TRANSPORTATION
FEDERAL HIGHWAY ADMINISTRATION
APPROVED _____, 19____
Date
DIVISION ENGINEER

PLAN	SURVEYED	DATE
NOTE BOOK	BY HURD	5-62
NO.	TAMS - HURD	5-62
	PLANNED	5-62
	ALIGNMENT CHECKED	7-63
	BY TAMS	7-63
	PI. OF WAY CHECKED	
	NO.	



P.I. No. 82
 $\Delta = 44^{\circ} 36'$
 $D = 3^{\circ} 00'$
 $T = 783.3'$
 $L = 1486.7'$
 $N. = 3,250,409.4$
 $E. = 543,986.4$

United States of America
 Lance H. Minnis, Entryman
 T. & M. No. 062979
 Subject to R/W Grant 052629
 P.I. No. 83
 $\Delta = 22^{\circ} 20'$
 $D = 2^{\circ} 00'$
 $T = 565.5'$
 $L = 1116.7'$
 $N. = 3,252,569.5$
 $E. = 544,810.3$



NOTE
 Parcel A-1766 R/W Granted
 by B.L.M. 11-9-62.

PARCEL INFORMATION BLOCK			
PARCEL NO.	OWNER	TAKE	REMAIN
P-262	DELETED		
P-263	UNITED STATES OF AMERICA STATE OF ALASKA (SELECTED)	2.536 AC. ±	LARGE

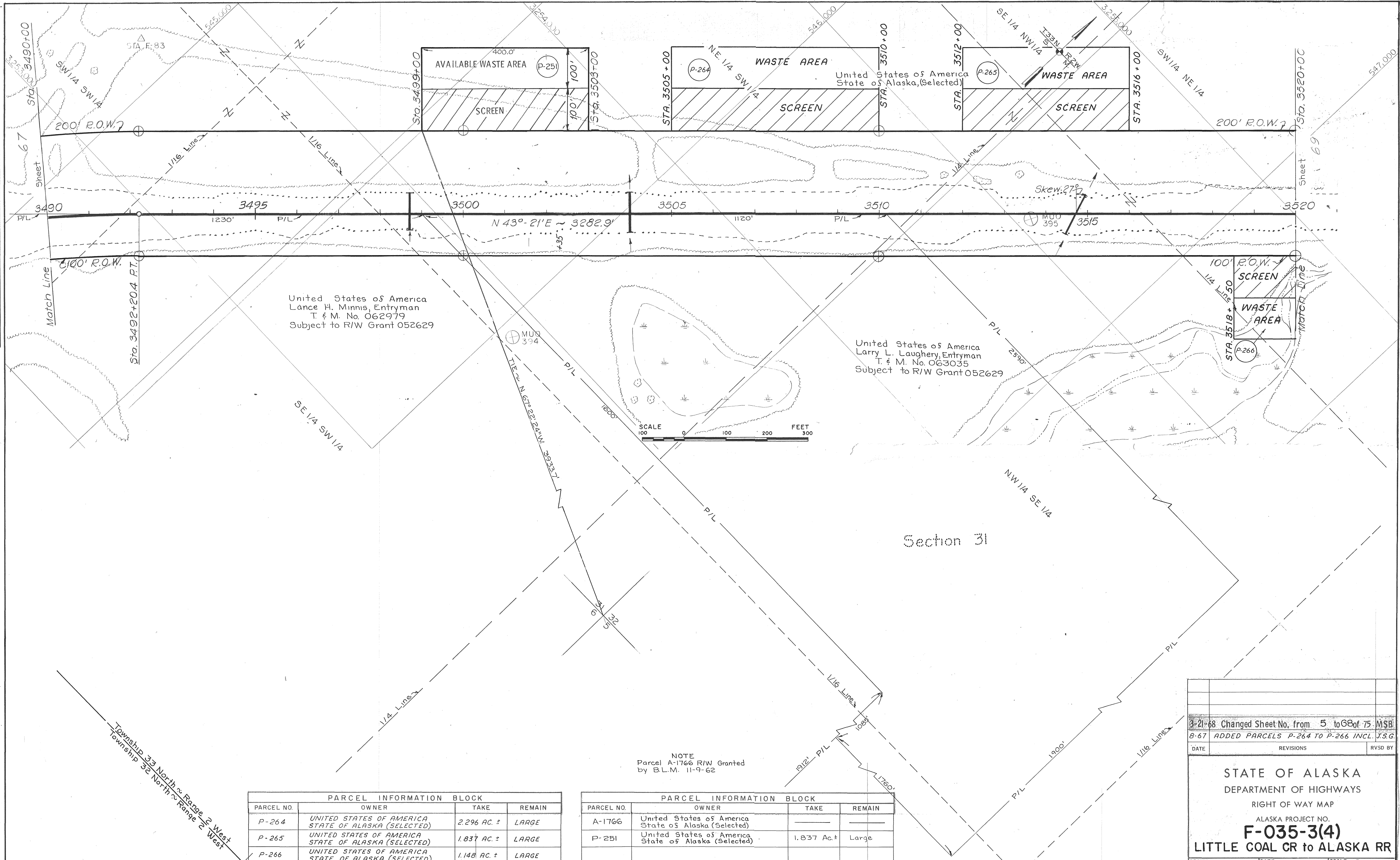
PARCEL INFORMATION BLOCK			
PARCEL NO.	OWNER	TAKE	REMAIN
A-1766	United States of America State of Alaska (Selected)		
A-1769	United States of America State of Alaska (Selected)	0.195 AC. ±	Large
P-260	UNITED STATES OF AMERICA STATE OF ALASKA (SELECTED)	1.935 AC. ±	LARGE
P-261	UNITED STATES OF AMERICA STATE OF ALASKA (SELECTED)	2.655 AC. ±	LARGE

10-68	DELETED P-262	LS
3-21-68	Changed Sheet No. from 4 to 67 of 75	MSB
11-3-67	Revised Parcel P-262	Chan
8-67	ADDED PARCELS P-260 TO P-263 INCL.	J.S.G.
DATE	REVISIONS	RVSD BY

STATE OF ALASKA
 DEPARTMENT OF HIGHWAYS
 RIGHT OF WAY MAP
 ALASKA PROJECT NO.
F-035-3(4)
 LITTLE COAL CR to ALASKA RR

DRAWN Chan	DATE 1-31-67	SCALE 1" = 100'
CHECKED LB	DATE 1-31-67	SHEET 67 OF 75

PLAN
 SURVEYED BY: HURD
 PLOTTED BY: FAIRBANKS
 NOTE BOOK NO. 4145
 DATE CHECKED: 2-1-67
 RT. OF WAY CHECKED: T.M.S.
 NO. 2-1-67



United States of America
 Lance H. Minnis, Entryman
 T & M. No. 062979
 Subject to R/W Grant 052629

United States of America
 Larry L. Laughery, Entryman
 T & M. No. 063035
 Subject to R/W Grant 052629

SCALE
 0 100 200 300 FEET

NOTE
 Parcel A-1766 R/W Granted
 by B.L.M. 11-9-62

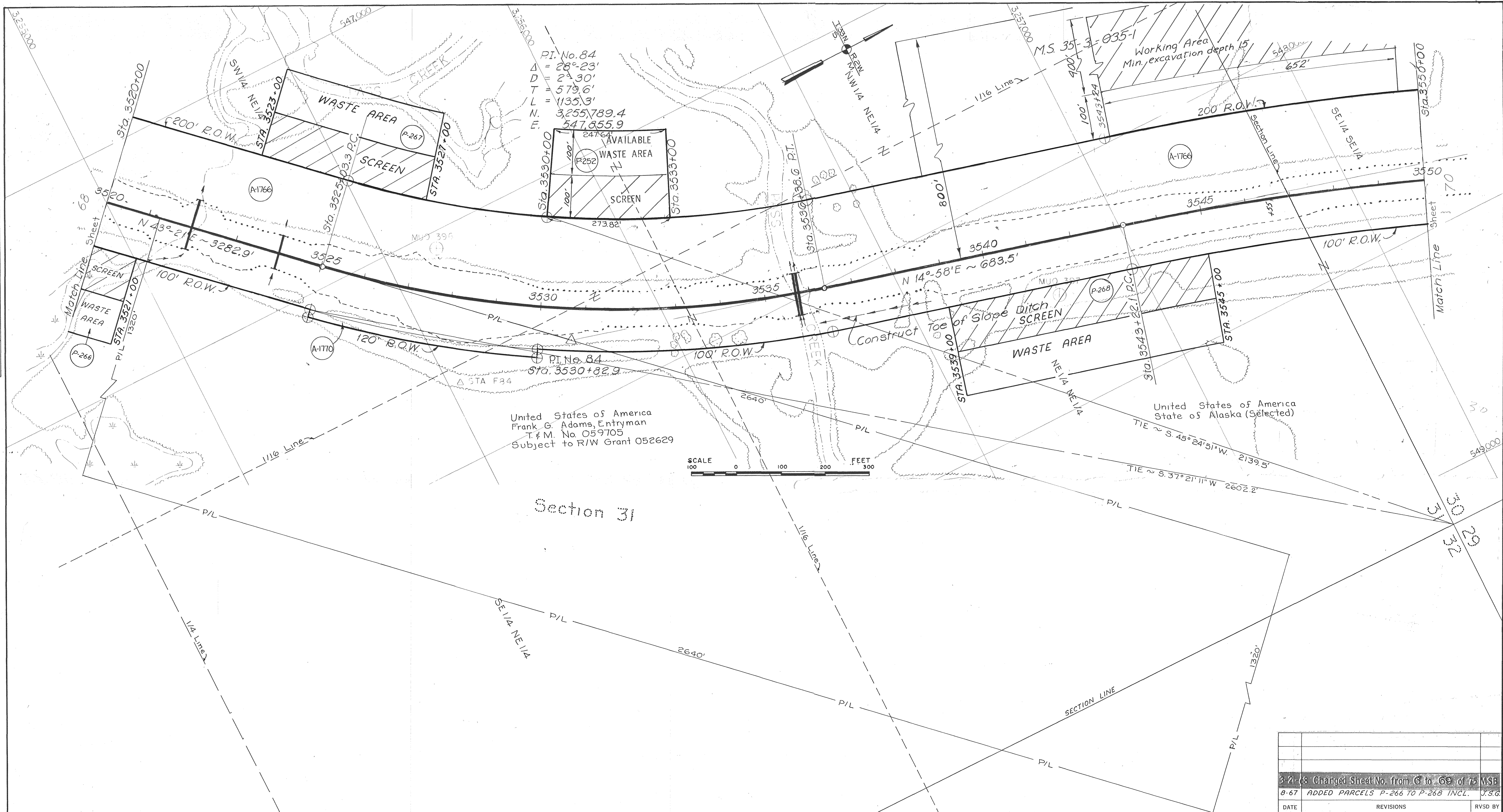
Township 33 North, Range 2 West
 Township 32 North, Range 2 West

PARCEL INFORMATION BLOCK			
PARCEL NO.	OWNER	TAKE	REMAIN
P-264	UNITED STATES OF AMERICA STATE OF ALASKA (SELECTED)	2.296 AC. ±	LARGE
P-265	UNITED STATES OF AMERICA STATE OF ALASKA (SELECTED)	1.837 AC. ±	LARGE
P-266	UNITED STATES OF AMERICA STATE OF ALASKA (SELECTED)	1.148 AC. ±	LARGE

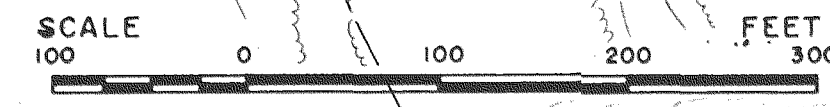
PARCEL INFORMATION BLOCK			
PARCEL NO.	OWNER	TAKE	REMAIN
A-1766	United States of America State of Alaska (Selected)	—	—
P-251	United States of America State of Alaska (Selected)	1.837 Ac. ±	Large

3-21-68 Changed Sheet No. from 5 to 68 of 75 MSB		
8-67 ADDED PARCELS P-264 TO P-266 INCL. I.S.G.		
DATE	REVISIONS	RVSD BY
STATE OF ALASKA DEPARTMENT OF HIGHWAYS RIGHT OF WAY MAP ALASKA PROJECT NO. F-035-3(4) LITTLE COAL CR to ALASKA RR		
DRAWN Chan	DATE 1-31-67	SCALE 1" = 100'
CHECKED LB	DATE 1-31-67	SHEET 68 OF 75

DATE	BY	BY	DATE
9-5-62	WJZ	WJZ	9-5-62
4-5-63	TAMS	TAMS	4-5-63
4-6-63	TAMS	TAMS	4-6-63
PLAN		SHEET	
NO.		NO.	
NOTE BOOK		ALIGNMENT CHECKED	
RT. OF WAY CHECKED		NO.	



United States of America
 Frank G. Adams, Entryman
 T & M. No. 059705
 Subject to R/W Grant 052629



Section 31

NOTE
 Parcel A-1766 R/W
 Granted by B.L.M.
 11-9-62

PARCEL INFORMATION BLOCK			
PARCEL NO.	OWNER	TAKE	REMAIN
P-266	UNITED STATES OF AMERICA STATE OF ALASKA (SELECTED)	1.148 AC. ±	LARGE
P-267	UNITED STATES OF AMERICA STATE OF ALASKA (SELECTED)	1.718 AC. ±	LARGE
P-268	UNITED STATES OF AMERICA STATE OF ALASKA (SELECTED)	2.726 AC. ±	LARGE

PARCEL INFORMATION BLOCK			
PARCEL NO.	OWNER	TAKE	REMAIN
A-1766	United States of America State of Alaska (Selected)	—	—
P-252	United States of America State of Alaska (Selected)	1.197 AC. ±	Large
A-1770	United States of America Frank G. Adams, Entryman	0.239 AC. ±	79.761 ac. ±

3-21-68 Changed Sheet No. from 6 to 69 of 75 MSB
 8-67 ADDED PARCELS P-266 TO P-268 INCL. J.S.G.

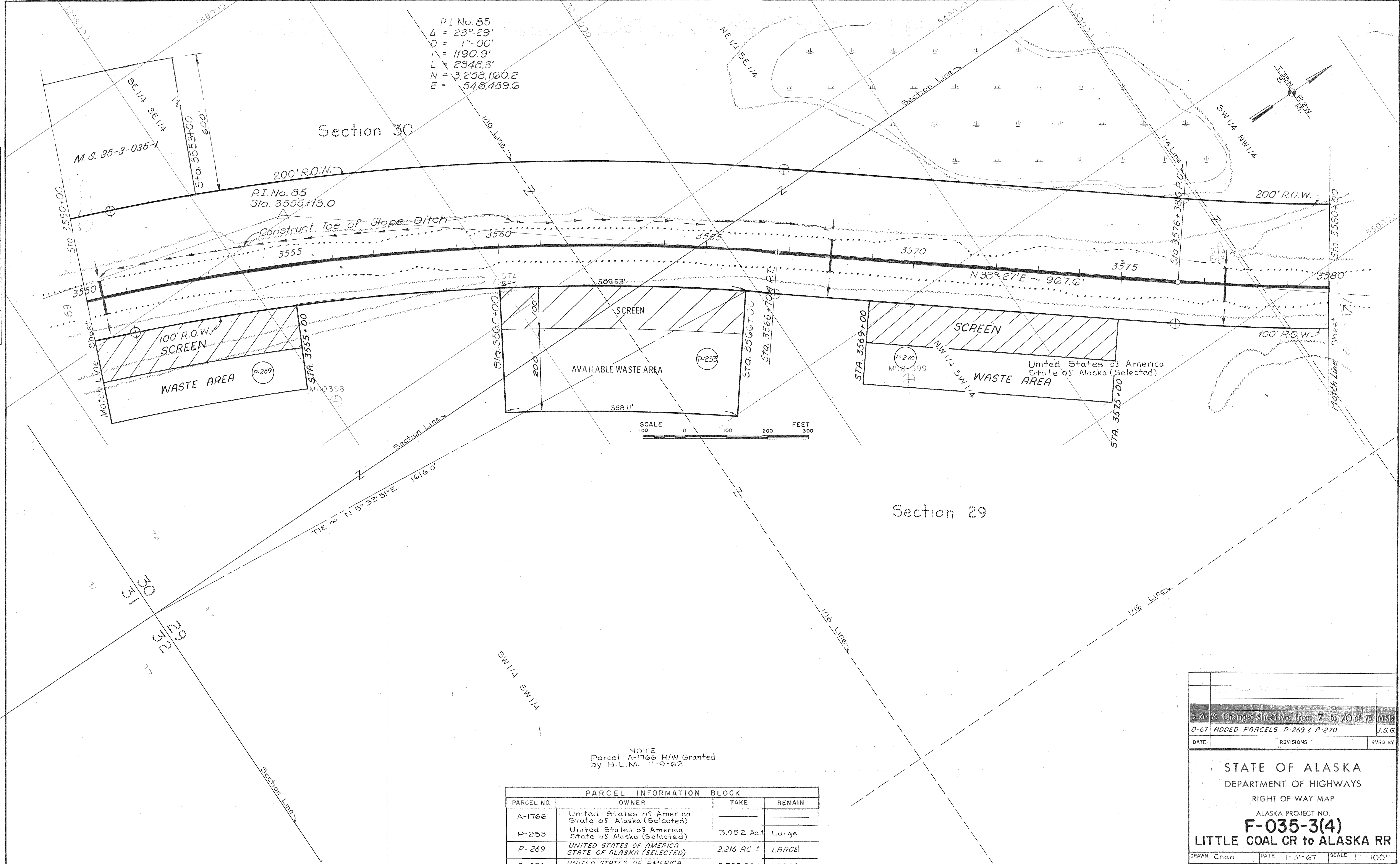
DATE	REVISIONS	RVSD BY
------	-----------	---------

STATE OF ALASKA
 DEPARTMENT OF HIGHWAYS
 RIGHT OF WAY MAP
 ALASKA PROJECT NO.
F-035-3(4)
 LITTLE COAL CR to ALASKA RR

DRAWN Chan	DATE 1-31-67	SCALE 1" = 100'
CHECKED LB	DATE 1-31-67	SHEET 69 OF 75

PLAN	SURVEYED	DATE
NOTE BOOK	PLOTTED	5-62
NO.	BY	HURD
	NOT CHECKED	TAMM
	BY	TAMM
	NO.	4-63

P.I. No. 85
 $\Delta = 23^{\circ}29'$
 $\theta = 1^{\circ}00'$
 $T = 1190.9'$
 $L = 2348.3'$
 $N = 3,258,160.2$
 $E = 548,489.6$

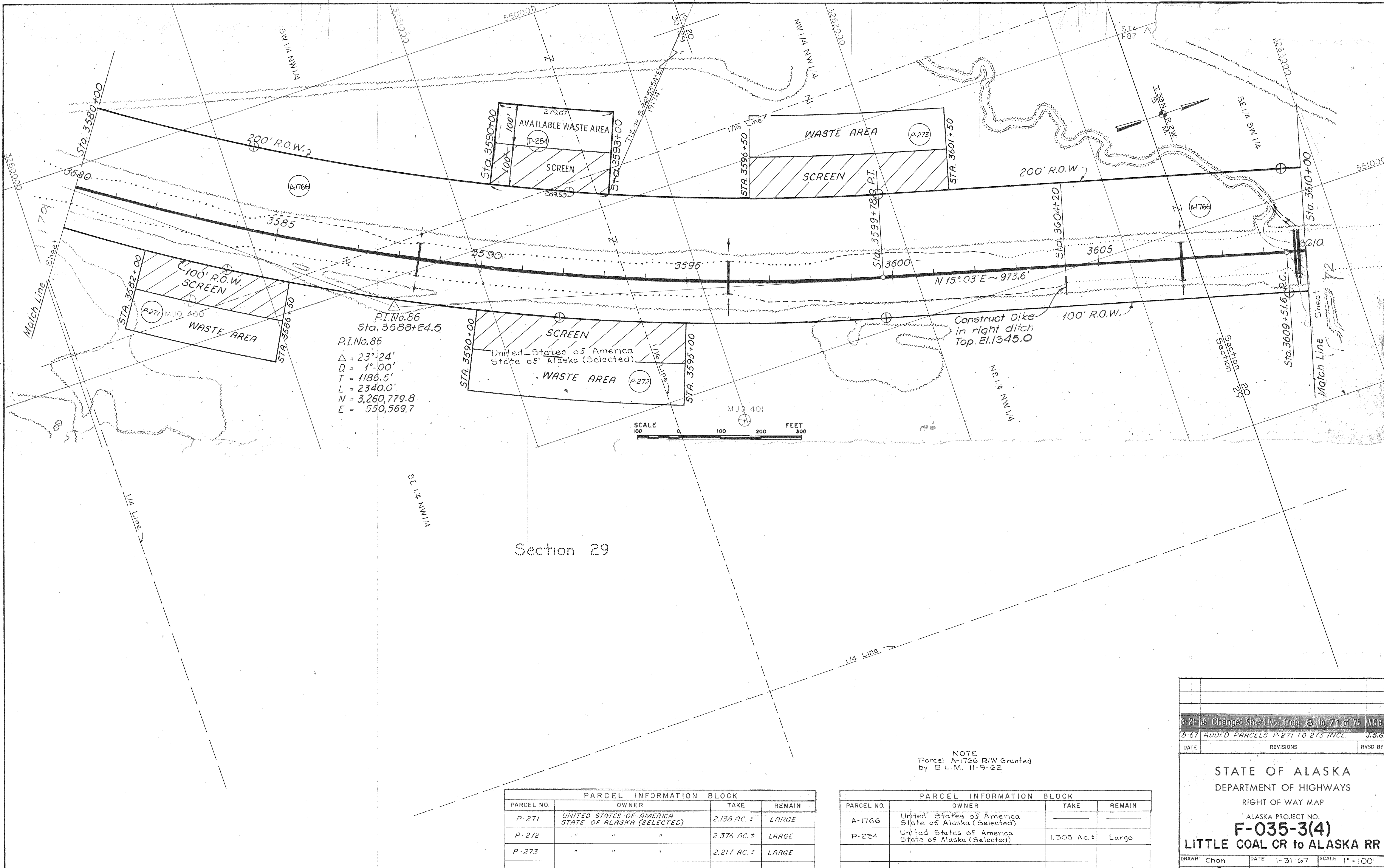


NOTE
 Parcel A-1766 R/W Granted
 by B.L.M. 11-9-62

PARCEL INFORMATION BLOCK			
PARCEL NO.	OWNER	TAKE	REMAIN
A-1766	United States of America State of Alaska (Selected)	_____	_____
P-253	United States of America State of Alaska (Selected)	3.952 Ac. ±	LARGE
P-269	UNITED STATES OF AMERICA STATE OF ALASKA (SELECTED)	2.216 AC. ±	LARGE
P-270	UNITED STATES OF AMERICA STATE OF ALASKA (SELECTED)	2.755 AC. ±	LARGE

3-2-68 Changed Sheet No. from 7 to 70 of 75 MSB		
8-67 ADDED PARCELS P-269 & P-270 J.S.G.		
DATE	REVISIONS	RVSD BY
STATE OF ALASKA DEPARTMENT OF HIGHWAYS RIGHT OF WAY MAP ALASKA PROJECT NO. F-035-3(4) LITTLE COAL CR to ALASKA RR		
DRAWN Chan	DATE 1-31-67	SCALE 1" = 100'
CHECKED LB	DATE 1-31-67	SHEET 70 OF 75

PLAN	SURVEYED	DATE
	BY	BY
	NOTE BOOK	ALIGNED
	RT. OF WAY CHECKED	RT. OF WAY CHECKED



P.I. No. 86
 Sta. 3588+24.5
 $\Delta = 23^\circ 24'$
 $D = 1^\circ 00'$
 $T = 1186.5'$
 $L = 2340.0'$
 $N = 3,260,779.8$
 $E = 550,569.7$

SCALE 1" = 100' FEET

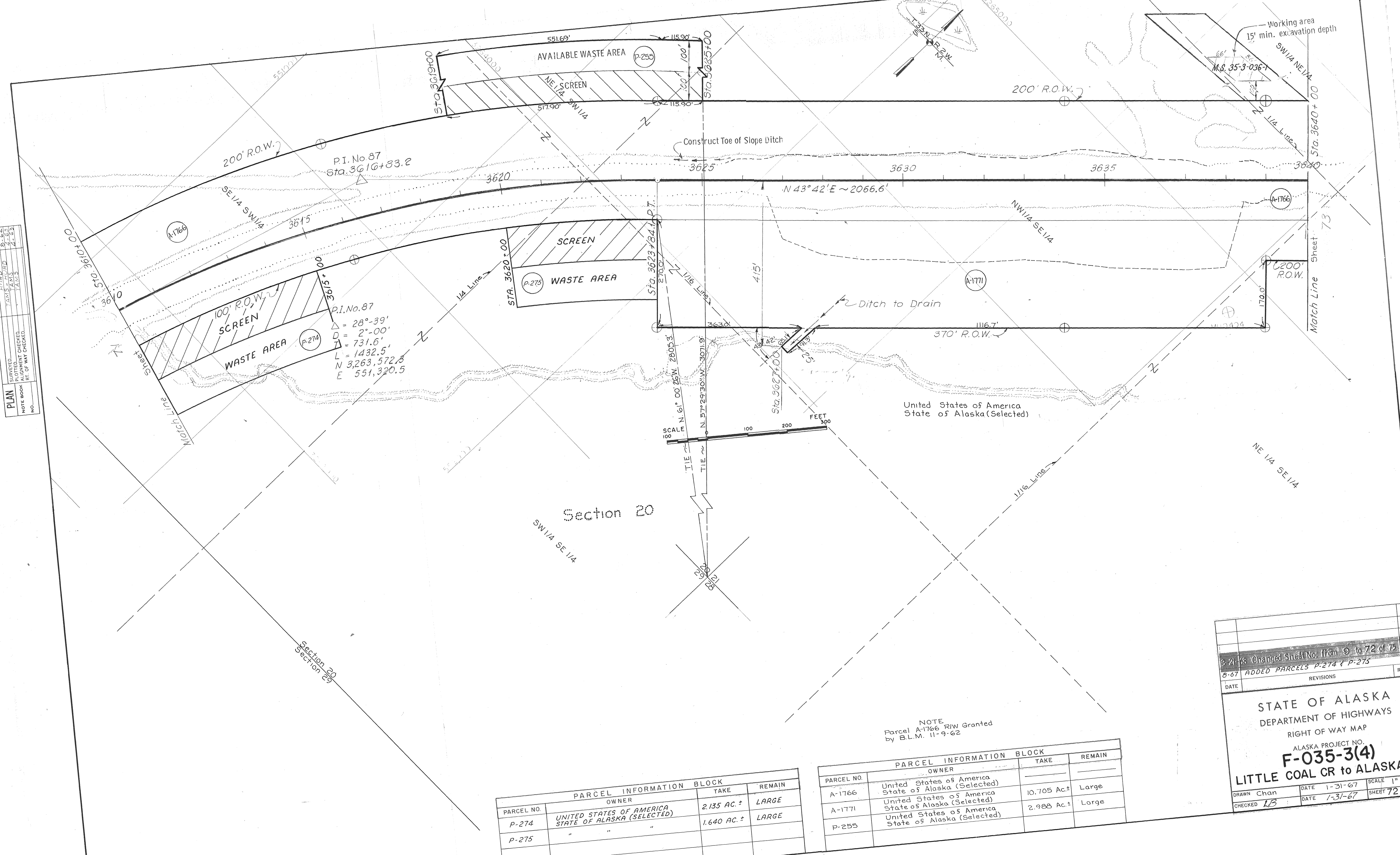
NOTE
Parcel A-1766 R/W Granted
by B.L.M. 11-9-62

PARCEL INFORMATION BLOCK			
PARCEL NO.	OWNER	TAKE	REMAIN
P-271	UNITED STATES OF AMERICA STATE OF ALASKA (SELECTED)	2.138 AC. ±	LARGE
P-272	" " "	2.376 AC. ±	LARGE
P-273	" " "	2.217 AC. ±	LARGE

PARCEL INFORMATION BLOCK			
PARCEL NO.	OWNER	TAKE	REMAIN
A-1766	United States of America State of Alaska (Selected)		
P-254	United States of America State of Alaska (Selected)	1.305 Ac. ±	Large

3-21-68 Changed Sheet No. from 8 to 71 of 75 MSB		
8-67 ADDED PARCELS P-271 TO 273 INCL. J.S.B.		
DATE	REVISIONS	RVSD BY
STATE OF ALASKA DEPARTMENT OF HIGHWAYS RIGHT OF WAY MAP ALASKA PROJECT NO. F-035-3(4) LITTLE COAL CR to ALASKA RR		
DRAWN Chan	DATE 1-31-67	SCALE 1" = 100'
CHECKED LB	DATE 1-31-67	SHEET 71 OF 75

DATE	BY	REVISED
5-6-67	J.M.S.	5-6-67
0-2-67	J.M.S.	0-2-67
4-8-67	J.M.S.	4-8-67
SURVEYED BY J.M.S.		
PLAN CHECKED BY J.M.S.		
NOTE BOOK NO. _____		
RT. OF WAY CHECKED BY _____		
NO. _____		



PARCEL INFORMATION BLOCK			
PARCEL NO.	OWNER	TAKE	REMAIN
P-274	UNITED STATES OF AMERICA STATE OF ALASKA (SELECTED)	2.135 AC. ±	LARGE
P-275	"	1.640 AC. ±	LARGE

PARCEL INFORMATION BLOCK			
PARCEL NO.	OWNER	TAKE	REMAIN
A-1766	United States of America State of Alaska (Selected)	10.705 Ac. ±	Large
A-1771	United States of America State of Alaska (Selected)	2.988 Ac. ±	Large
P-255	United States of America State of Alaska (Selected)		

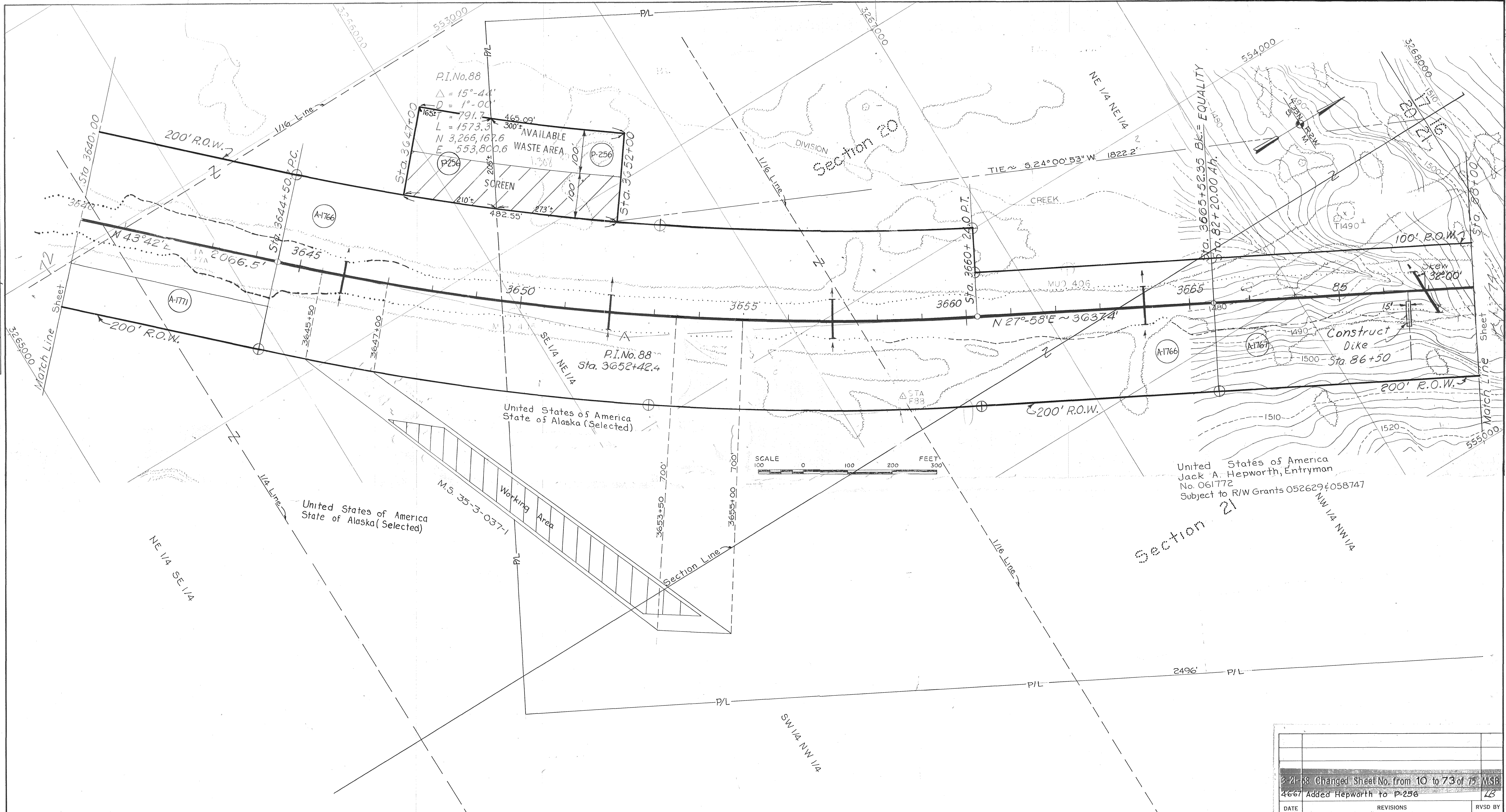
NOTE
Parcel A-1766 R/W Granted
by B.L.M. 11-9-62

3-21-68 Changed Sheet No. from 9 to 72 of 75 MSB		J.S.G.
8-67 ADDED PARCELS P-274 & P-275		J.S.G.
DATE	REVISIONS	RVSD BY

STATE OF ALASKA
DEPARTMENT OF HIGHWAYS
RIGHT OF WAY MAP
ALASKA PROJECT NO.
F-035-3(4)
LITTLE COAL CR to ALASKA RR

DRAWN Chan DATE 1-31-67 SCALE 1" = 100'
CHECKED LB DATE 1-31-67 SHEET 72 OF 75

PLAN	SURVEYED	DATE
	BY	5-6-67
	PLOTTED	5-16-67
	NOTED	5-22-67
	CHECKED	5-23-67
	RT. OF WAY CHECKED	5-23-67
	NO.	



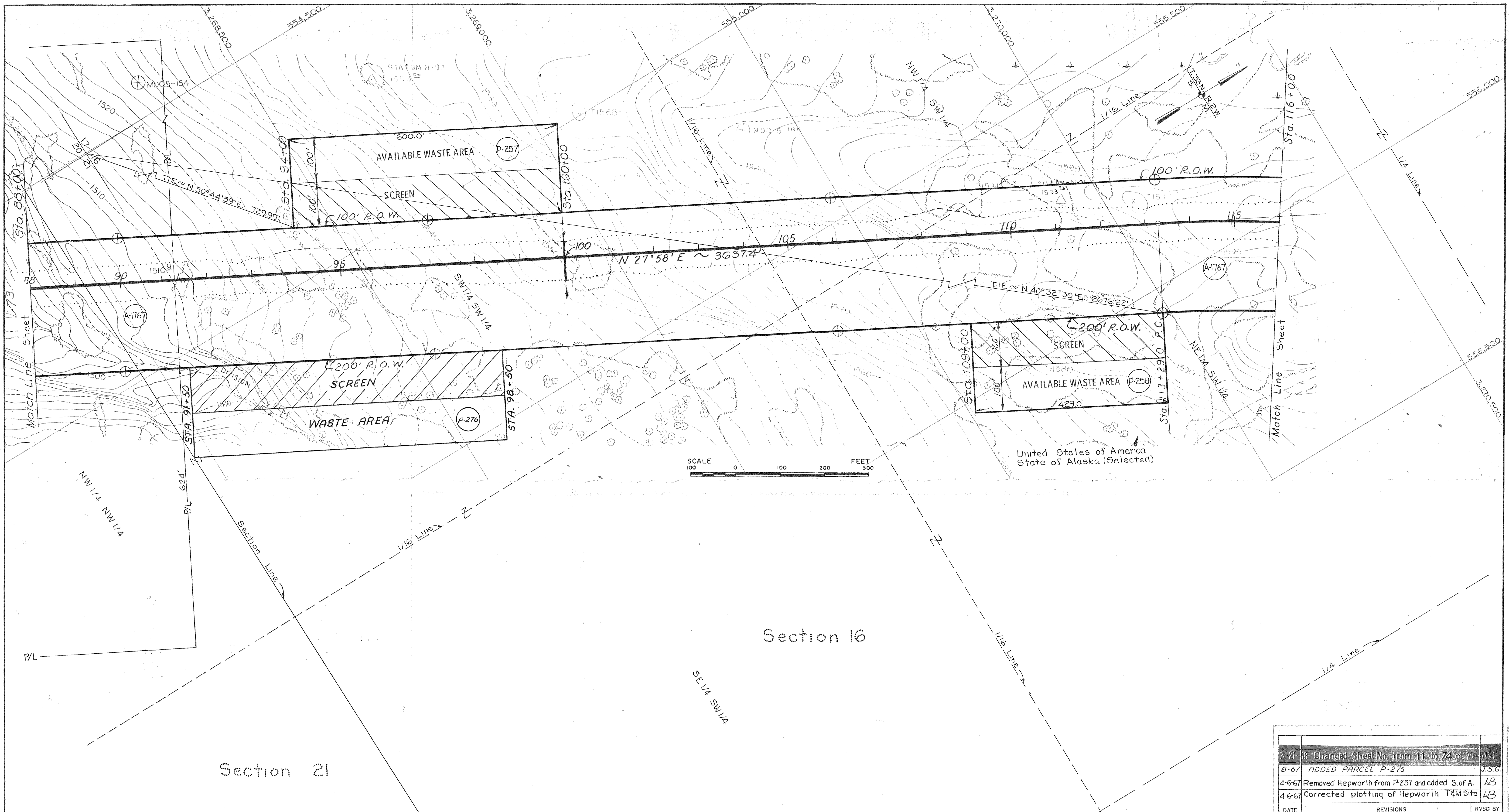
NOTE
 Parcel A-1766 R/W Granted
 by B.L.M. 11-9-62. Parcel
 A-1767 R/W Granted by B.L.M.
 4-26-63.

PARCEL INFORMATION BLOCK			
PARCEL NO.	OWNER	TAKE	REMAIN
A-1766	United States of America State of Alaska (Selected)	—	—
A-1767	United States of America State of Alaska (Selected)	—	—
P-256	United States of America State of Alaska Jack A. Hepworth (Entryman)	2.175 Ac.±	Large
A-1771	United States of America State of Alaska (Selected)	10.705 Ac.±	Large

United States of America
 Jack A. Hepworth, Entryman
 No. 061772
 Subject to R/W Grants 052629 & 058747

3-21-68 Changed Sheet No. from 10 to 73 of 75 MSB		
4667 Added Hepworth to P-256 LB		
DATE	REVISIONS	RVSD BY
STATE OF ALASKA DEPARTMENT OF HIGHWAYS RIGHT OF WAY MAP ALASKA PROJECT NO. F-035-3(4) LITTLE COAL CR to ALASKA RR		
DRAWN Chan	DATE 1-31-67	SCALE 1" = 100'
CHECKED LB	DATE 1-31-67	SHEET 73 OF 75

PLAN	DESIGNED	BY
	PLOTTED	DATE
	ALIGNMENT CHECKED	NO.
	RT. OF WAY CHECKED	



SCALE
100 0 100 200 300 FEET

United States of America
State of Alaska (Selected)

Section 16

Section 21

NOTE
Parcel A-1767 R/W
Granted by B.L.M.
4-26-63.

PARCEL INFORMATION BLOCK			
PARCEL NO.	OWNER	TAKE	REMAIN
A-1767	United States of America State of Alaska (Selected)		
P-257	United States of America State of Alaska (Selected)	2.755 Ac.±	Large
P-258	United States of America State of Alaska (Selected)	1.970 Ac.±	Large
P-276	"	3.214 AC. ±	LARGE

3-21-68	Changed Sheet No. from 11 to 74 of 75	J.S.G.
8-67	ADDED PARCEL P-276	LB
4-6-67	Removed Hepworth from P257 and added S.of A.	LB
4-6-67	Corrected plotting of Hepworth T&M Site	LB
DATE	REVISIONS	RVSD BY

STATE OF ALASKA
DEPARTMENT OF HIGHWAYS
RIGHT OF WAY MAP
ALASKA PROJECT NO.
F-035-3(4)
LITTLE COAL CR to ALASKA RR

DRAWN Chan DATE 1-31-67 SCALE 1" = 100'
CHECKED LB DATE 1-31-67 SHEET 74 OF 75

PLAN SURVEYED BY DATE
 PLOTTED BY 5-62
 NOTE BOOK NO. TAV. HUB 3-63
 ALIGNMENT CHECKED BY 2-63
 RT. OF WAY CHECKED BY 2-63

P.I. No. 31
 $\Delta = 18^{\circ}55'$
 $D = 2^{\circ}00'$
 $T = 477.3'$
 $L = 945.8'$
 $N = 3,270,500.9$
 $E = 556,101.4$

P.I. No. 31
 Sta. 118+06.3

Sta. 134+00.0
 $N = 3,271,596.1$
 $E = 557,271.2$

END OF PROJECT F-035-3(4)
 STATION 134+00.00

SCALE
 100 0 100 200 300 FEET

Section 16

NOTE
 Parcel A-1767 R/W Granted
 by B.L.M. 4-26-63

PARCEL INFORMATION BLOCK			
PARCEL NO.	OWNER	TAKE	REMAIN
A-1767	United States of America State of Alaska (Selected)		

DATE	REVISIONS	RVS'D BY
	12 75	
STATE OF ALASKA DEPARTMENT OF HIGHWAYS RIGHT OF WAY MAP ALASKA PROJECT NO. F-035-3(4) LITTLE COAL CR to ALASKA RR		
DRAWN Chan	DATE 1-31-67	SCALE 1" = 100'
CHECKED LB	DATE 1-31-67	SHEET 75 OF 75