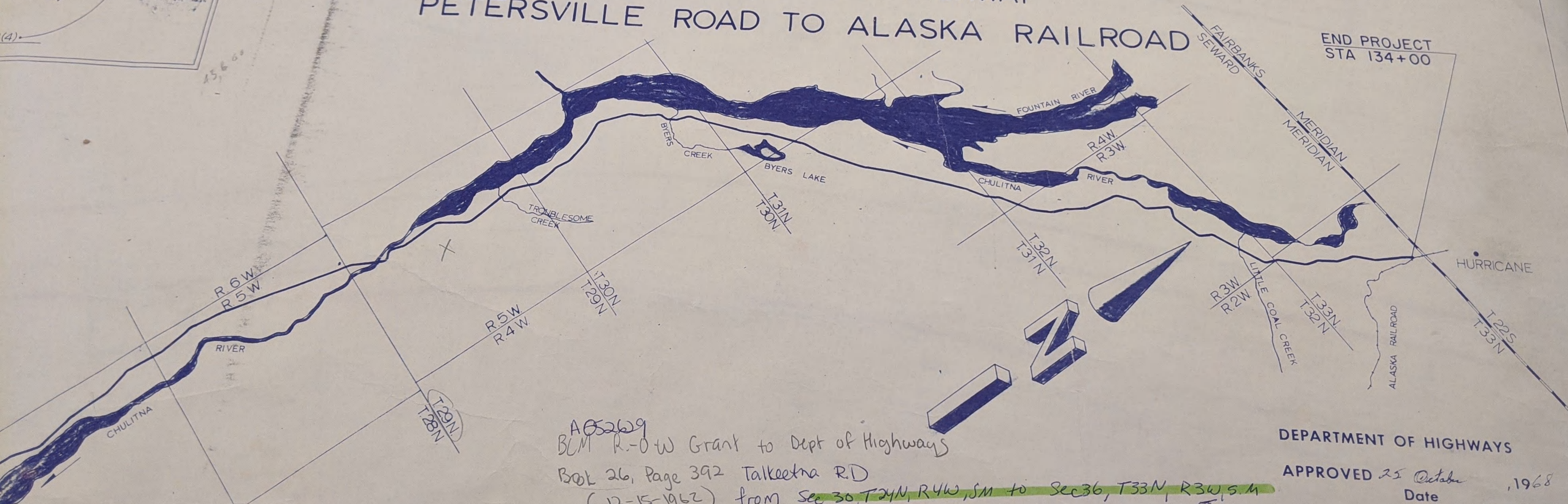
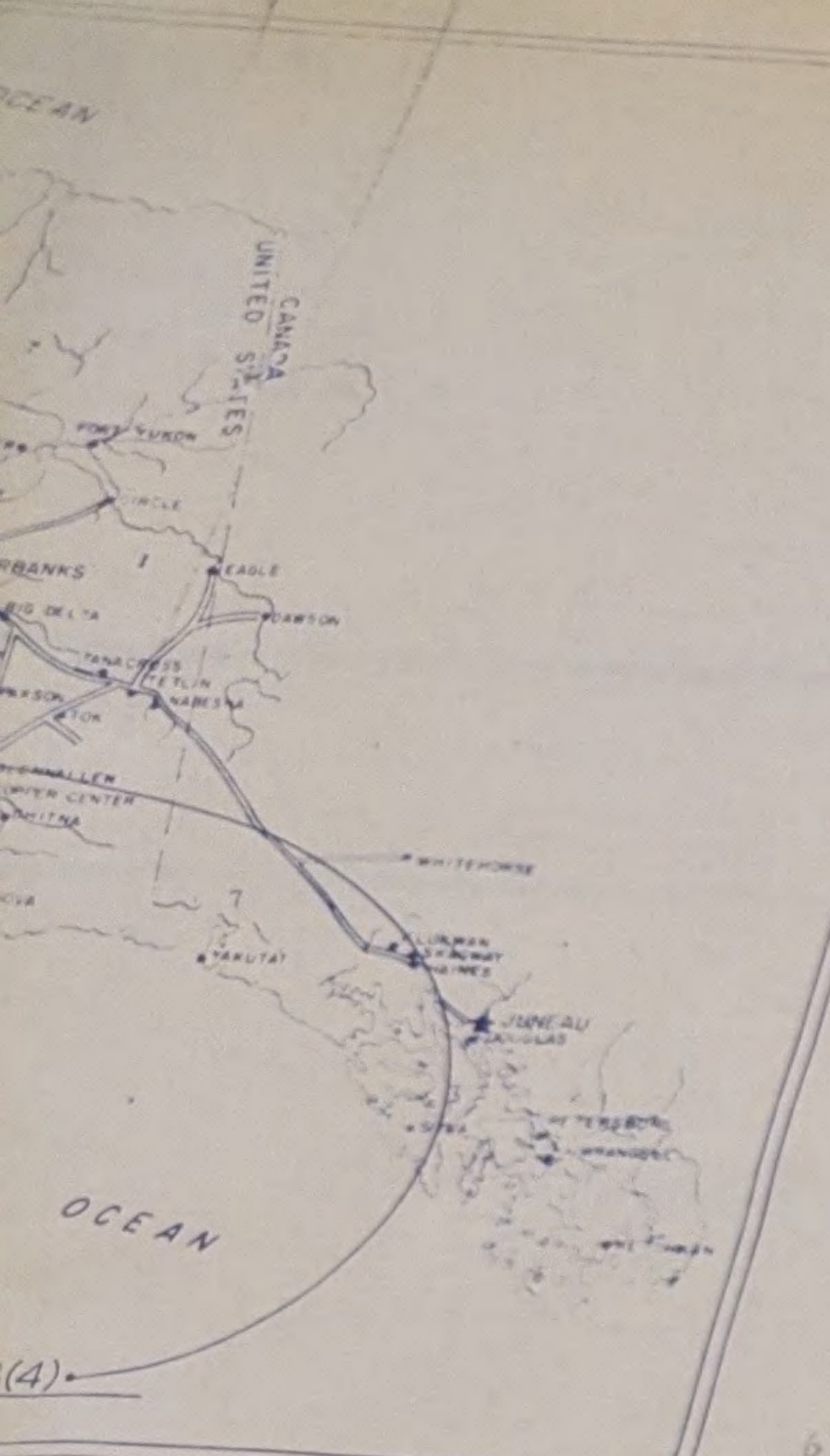


STATE OF ALASKA
DEPARTMENT OF HIGHWAYS

RIGHT OF WAY MAP
 ALASKA PROJECT

F-035-3(4)
 PALMER - CANTWELL HIGHWAY
 PETERSVILLE ROAD TO ALASKA RAILROAD

Pg 1-64: Chulitna R to Little Coal Creek
 Pg 65-75: Little Coal Cr to Alaska RR



A052629
 BLM R-O-W Grant to Dept of Highways
 Book 26, Page 392 Talkeetna R.D.
 (12-15-1962) from Sec 30, T24N, R4W, S1 to Sec 36, T33N, R3W, S1

BLM #A052629
 (Amended) BLM - Material Site R-O-W
 Book 26, Page 361, Talkeetna R.D.
 (12-08-1962)

DEPARTMENT OF HIGHWAYS
 APPROVED 25 October, 1968
 Date
 J. H. Cougal
 For COMMISSIONER

DEPARTMENT OF TRANSPORTATION
 FEDERAL HIGHWAY ADMINISTRATIO
 APPROVED _____, 19____
 Date