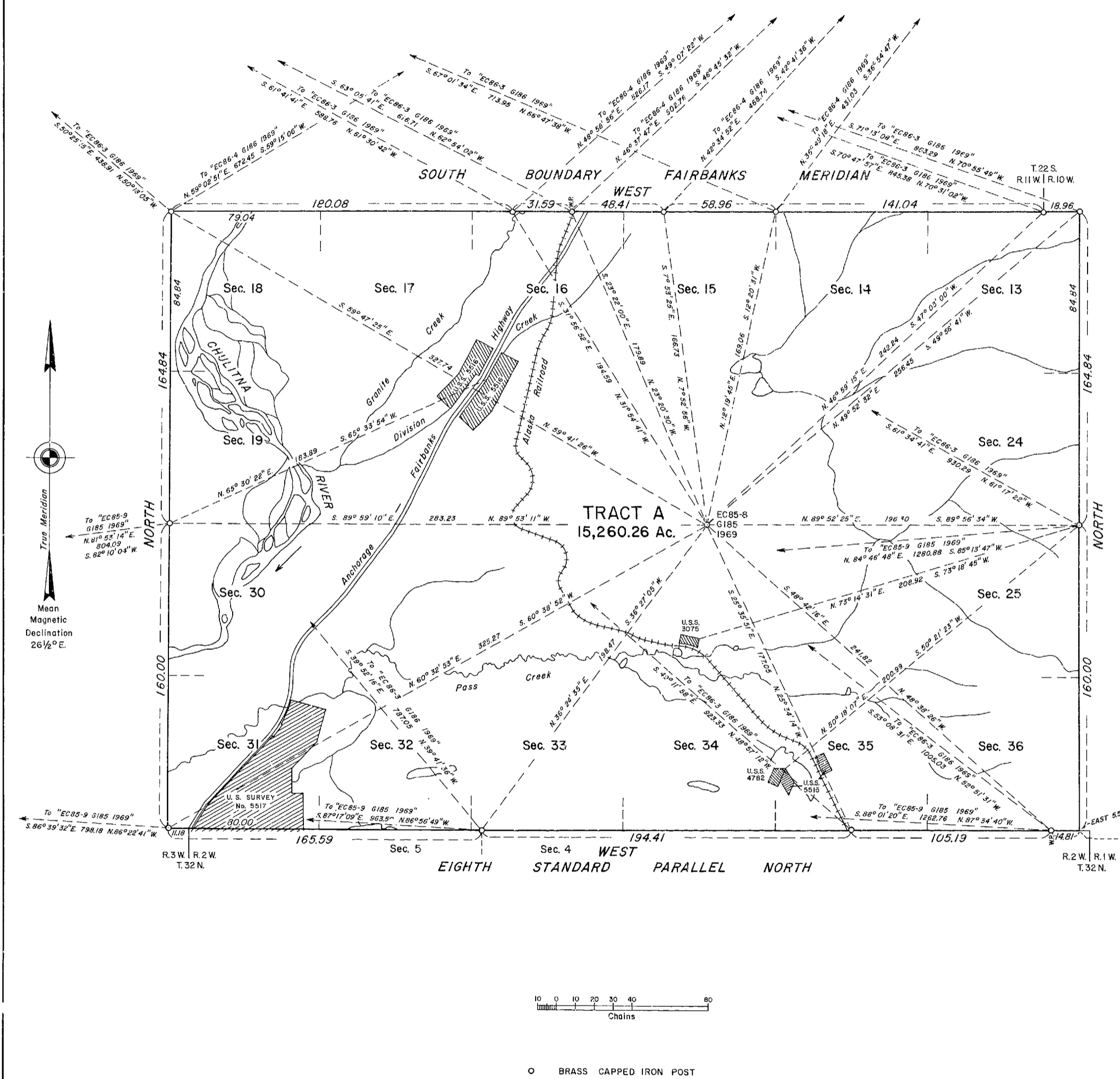


TOWNSHIP 33 NORTH, RANGE 2 WEST, OF THE SEWARD MERIDIAN, ALASKA



This plat represents the survey of the Eighth Standard Parallel North, through Range 2 West; the north boundary, along the south boundary of the Fairbanks Meridian; and the east and west boundaries, executed by Frederick W. Ward, Supervisory Cadastral Surveyor, September 23, 1968, through October 5, 1969, under Special Instructions dated July 17, 1968, and Supplemental Special Instructions dated February 13, 1969, and July 11, 1969, for Group No. 185, Alaska.

Gross Area Surveyed	15,576.73 Acres
Exclusion:	
U.S. Survey No. 3075	4.42
U.S. Survey No. 4782	4.99
U.S. Survey No. 5515	9.72
U.S. Survey No. 5516	79.13
U.S. Survey No. 5517 (portion)	218.21

Total Exclusions 316.47 Acres

Total Net Area Tract "A" 15,260.26 Acres

The net area surveyed embraces the entire township exclusive of the U.S. Surveys and has been designated as Tract "A" for legal description purposes.

The area of Tract "A" is subject to any riparian entitlement attaching under Revised Statute 2476.

The hydrography shown on this plat was obtained from the best available U.S. Geological Survey maps.

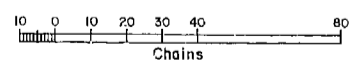
UNITED STATES DEPARTMENT OF THE INTERIOR
BUREAU OF LAND MANAGEMENT
Washington, D.C. May 20, 1977

This plat is strictly conformable to the approved field notes, and the survey, having been correctly executed in accordance with the requirements of law and the regulations of this Bureau, is hereby accepted.

For the Director

Bernard W. Foster
Chief, Division of Cadastral Survey

Latitude 62° 53' 58.83" N.
Longitude 149° 32' 49.64" W.



○ BRASS CAPPED IRON POST

FIELD NOTES

OF

THE SURVEY OF

THE EIGHTH STANDARD PARALLEL NORTH

ALONG THE SOUTH BOUNDARY,

THE NORTH BOUNDARY

ALONG THE SOUTH BOUNDARY

OF

THE FAIRBANKS MERIDIAN

AND

THE EAST AND WEST BOUNDARIES

OF

FRACTIONAL TOWNSHIP 33 NORTH, RANGE 2 WEST

Of the SEWARD Meridian,

In the State of ALASKA

EXECUTED BY

FREDERICK W. WARD, SUPERVISORY CADASTRAL SURVEYOR

Under special instructions dated JULY 17, 19 68, approved JULY 22, 1968 and, supplemental special instructions dated FEBRUARY 13, 1969, and JULY 11, 1969, approved FEBRUARY 18, 1969, and JULY 11, 1969, respectively, which provided for the surveys included under ~~XXXXXX~~/Group Number 185, and assignment instructions dated JULY 24, 19 68 and JULY 31, 1969.

Survey commenced SEPTEMBER 23, 19 68

Survey completed OCTOBER 5, 19 69

INDEX DIAGRAM

Township 33 North, Range 2 West,

	10		8		6
6	5	4	3	2	1
7	8	9	10	11	12
18	17	16	15	14	13
19	20	21	22	23	24
13					12
30	29	28	27	26	25
12	31	32	33	34	35
6	5			4	3

TOWNSHIP 33 NORTH, RANGE 2 WEST, SEWARD MERIDIAN

CHAINS

This survey establishes the Eighth Standard Parallel North, along the South boundary, the North boundary, along the South boundary of the Fairbanks Meridian and the East and West boundaries of fractional Township 33 North, Range 2 West, Seward Meridian.

Corners in this survey were established by the following methods.

Using the Airborne Control System (ABC), control stations established by U.S. Coast and Geodetic Survey and the Bureau of Land Management, were occupied, and using pre-computed angles, or an angle and a distance, a helicopter was positioned over the predetermined location to be monumented. When only one control station could be occupied, an additional independent set of distance and angular measurements was made. A marker was dropped at this location. Then by hovering at the height necessary to provide line of sight to the control stations, the helicopter served as an aerial platform for the electronic distance measuring equipment. It was also equipped with a beacon to provide a target for angular measurements. The helicopter was maintained in position over the ground point through the use of a sight, which provided a vertical reference for the pilot. Angular measurements were made using theodolites and distance measurements were made with electronic distance measuring instruments, which were in good condition and in proper adjustment at all times during the survey. Since vertical angles were measured from only one end of the line, the difference attributable to the curvature of the earth and refraction was taken into account.

Corners were also established using a modification of the Airborne Control System, in which three control stations were occupied and the position of the monument was determined by three point intersections, using linear measurements only.

Electronic measurements and computations were made with the foot unit of measure and where distances are given in chains in the field record, they have been converted from feet. Horizontal distances, as given in these field notes, were converted from slope measurements and reduced to their sea level equivalents.

NO LINE OF SIGHT WAS ACTUALLY SURVEYED ON THE GROUND BETWEEN CONSECUTIVE MONUMENTS. Monuments were established at precomputed positions and the distances and bearings between such monuments were determined by calculation. The field note record is prepared in the conventional manner, from monument to monument, along the lines of the boundaries being established. This is done to lend continuity to the field note record.

The initial point of the Seward Meridian, Latitude $60^{\circ}07'36.950''$ North, Longitude $149^{\circ}21'26.008''$ West, North American Datum, 1927, was used to control the geographic position for the rectangular survey system established by this survey.

All coordinate positions, give in these notes, are based upon the Alaska State Plane Coordinate System.

The fiberglas markers, referred to in these field notes, are conical, 25 inches diameter at the base, 4 inches diameter at the top, and 24 inches in height; they are open at the top and base and are orange in color.

TOWNSHIP 33 NORTH, RANGE 2 WEST, SEWARD MERIDIAN

CHAINS

The magnetic declination was not measured. Information from recent mapping sources indicates an average value of $26\frac{1}{2}^{\circ}$ East.

The following geodetic position, used as a control for this survey, is from the publications of data by the establishing agency:

U.S.C. & G.S. triangulation station
"MOOSE 1924"

Lat. $62^{\circ}52'28.49''$ N., Long. $149^{\circ}35'32.02''$ W.
(Y = 3,243,016 ft., X = 568,078 ft., Zone 4)

The following monuments were established as control stations for concurrent surveys as shown:

"EC 85-8 G185 1969"

Lat. $62^{\circ}55'42.58''$ N., Long. $149^{\circ}37'29.49''$ W.
(Y = 3,262,696 ft., X = 562,515 ft., Zone 4)

Described in the field notes of T. 31 N., R. 3 W., S.M.

"EC 85-9 G185 1969"

Lat. $62^{\circ}54'30.32''$ N., Long. $150^{\circ}03'08.16''$ W.
(Y = 3,255,178 ft., X = 491,284 ft., Zone 4)

Described in the field notes of T. 31 N., R. 3 W., S.M.

"EC 86-3 G186 1969"

Lat. $63^{\circ}00'31.81''$ N., Long. $149^{\circ}52'16.03''$ W.
(Y = 3,291,913 ft., X = 521,418 ft., Zone 4)

Described in the field notes of T. 31 N., R. 3 W., S.M.

"EC 86-4 G186 1969"

Lat. $63^{\circ}01'13.93''$ N., Long. $149^{\circ}30'28.54''$ W.
(Y = 3,296,482 ft., X = 581,744 ft., Zone 4)

Described in the field notes of T. 31 N., R. 3 W., S.M.

The positions of the following corners were determined for control for the execution of this survey.

Occupying BLM control station "EC 85-9 G185 1969," turn a true forward bearing of $N. 78^{\circ}48'31'' E.$, (back bearing $S. 79^{\circ}08'54'' W.$) and measure a dist. of 64,790 ft. (981.67 chs.) to a point, at:

Lat. $62^{\circ}56'32.26''$ N., Long. $149^{\circ}40'14.61''$ W.
(Y = 3,267,700 ft., X = 554,846 ft., Zone 4)

TOWNSHIP 33 NORTH, RANGE 2 WEST, SEWARD MERIDIAN

CHAINS

Cor. No. 2, Lot 2, U.S. Survey No. 5516, a concrete post, 6 x 6 ins., firmly set and witnessed as described in the official record.

Occupying BLM control station "EC 85-9 G185 1969," turn a true forward bearing of N. $87^{\circ}04'31''$ E., (back bearing S. $87^{\circ}27'16''$ W.) and measure a dist. of 71,103 ft. (1,077.32 chs.) to a point, at:

Lat. $62^{\circ}55'03.72''$ N., Long. $149^{\circ}37'34.85''$ W.
(Y = 3,258,748 ft., X = 562,290 ft., Zone 4)

Cor. No. 4, U.S. Survey No. 3075, monumented with an iron post, $2\frac{1}{2}$ ins. diam., set, mkd., and witnessed as described in the official record.

EIGHTH STANDARD PARALLEL NORTH, ALONG THE SOUTH BOUNDARY OF T. 33 N., R. 2 W., S.M.

Beginning at the point for the stan. cor. of Tps. 33 N., Rs. 1 and 2 W.; not monumented, at:

Lat. $62^{\circ}53'58.83''$ N., Long. $149^{\circ}32'49.64''$ W.
(Y = 3,252,242 ft., X = 575,544 ft., Zone 4)

From this point, the point for the cor. of Tps. 32 N., Rs. 1 and 2 W., bears EAST, 5.59 chs.; not monumented; described in the field notes of the concurrent survey of T. 32 N., R. 2 W.

WEST, with the establishment of the Eighth Standard Parallel North, along the South boundary of T. 33 N., R. 2 W.

14.81 Point selected for a witness point bet. secs. 1 and 36, thus established:

Occupying BLM control station "EC 86-3 G186 1969," compute a true forward bearing of S. $53^{\circ}08'31''$ E., (back bearing N. $52^{\circ}51'31''$ W.) and measure a dist. of 66,332 ft., (1,005.03 chs.) to a point; and occupying BLM control station "EC 85-8 G185 1969," compute a true forward bearing of S. $48^{\circ}42'16''$ E., (back bearing N. $48^{\circ}38'26''$ W.) and measure a dist. of 15,960 ft. (241.82 chs.) to the same point; and occupying BLM control station "EC 85-9 G185 1969," compute a true forward bearing of S. $88^{\circ}01'20''$ E., (back bearing N. $87^{\circ}34'40''$ W.) and measure a dist. of 83,342 ft., (1,262.76 chs.) to the same point at:

Lat. $62^{\circ}53'58.83''$ N., Long. $149^{\circ}33'10.74''$ W.
(Y = 3,252,235 ft., X = 576,566 ft., Zone 4)

Set an iron post, 30 ins. long, $2\frac{1}{2}$ ins. diam., 24 ins. in the ground and in a mound of stone to top, with brass cap mkd.

WP
T33N R2W
S36
S1
T32N R2W
1969

EIGHT STANDARD PARALLEL NORTH, ALONG THE SOUTH BOUNDARY OF T. 33 N., R. 2 W., S.M.

	<p>CHAINS</p> <p>Raise a mound of stone, 2 ft. base, 2½ ft. high, S. of cor., 17 lks. dist.</p> <p>Set a fiberglas marker over and wired to the monument.</p> <p>This monument is located in the open near Chulitna Pass, 1 mile N. of Indian River on the SW. slope of a mountain. There are large granite boulders in the immediate vicinity.</p>	
<p>105.19</p>	<p>WEST, along the South boundary of T. 33 N., R. 2 W., beginning new dist.</p> <p>Point for the standard ¼ sec. cor. of sec. 35 only, thus established:</p> <p>Occupying BLM control station "EC 86-3 G186 1969," turn a true forward bearing of S. 49°11'58" E., (back bearing N. 48°57'12" W.) and measure a dist. of 60,940 ft., (923.33 chs.) to a point; and occupying BLM control station "EC 85-8 G185 1969," turn a true forward bearing of S. 25°35'51" E., (back bearing N. 25°34'14" W.), and measure a dist. of 11,685 ft., (177.05 chs.) to the same point at:</p> <p style="text-align: center;">Lat. 62°53'58.83" N., Long. 149°35'40.55" W. (Y = 3,252,189 ft., X = 567,625 ft., Zone 4)</p> <p>Set an iron post, 30 ins. long, 2½ ins. diam., 24 ins. in the ground, with brass cap mkd.</p> <p style="text-align: center;">SC T33N R2W ¼ S35 ----- 1969</p> <p>from which</p> <p style="padding-left: 40px;">A spruce, 9 ins. diam., bears N. 4° E., 93 lks. dist., mkd. ¼ S35 SC BT.</p> <p style="padding-left: 40px;">A spruce, 5 ins. diam., bears S. 34° W., 44 lks. dist., mkd. X BT.</p> <p>Place a fiberglas marker over and wired to the monument, which is at the center of a cleared area 50 ft. in diam.</p> <p>This monument is located about 270 ft. W. of a small dirt road that bears NW. and SE. and about 220 ft. E. of the Alaska Railroad.</p> <p>The cor. is set at the W. edge of a low embankment, in scattered birch and spruce timber.</p>	
	<p>WEST, along the South boundary of T. 33 N., R. 2 W., beginning new dist.</p>	
<p>3.30</p>	<p>Approximate centerline of the Alaska Railroad, bears NW. and SE.</p>	
<p>194.41</p>	<p>Point for the cor. of secs. 4 and 5, T. 32 N., R. 2 W., thus established:</p> <p>Occupying BLM control station "EC 86-3 G186 1969," compute a true forward bearing of S. 39°52'16" E., (back bearing N. 39°41'36" W.) and measure a dist. of 51,945 ft.,</p>	

EIGHTH STANDARD PARALLEL NORTH, ALONG THE
SOUTH BOUNDARY OF T. 33 N., R. 2 W., S.M.

CHAINS

(787.05 chs.) to a point; and occupying BLM control station "EC 85-8 G185 1969," compute a true forward bearing of S. $36^{\circ}27'05''$ W., (back bearing N. $36^{\circ}24'35''$ E.) and measure a dist. of 13,099 ft., (198.47 chs.) to the same point; and occupying BLM control station "EC 85-9 G185 1969," compute a true forward bearing of S. $87^{\circ}17'09''$ E., (back bearing N. $86^{\circ}56'49''$ W.) and measure a dist of 63,591 ft., (963.50 chs.) to the same point at:

Lat. $62^{\circ}53'58.83''$ N., Long. $149^{\circ}40'17.44''$ W.
(Y = 3,252,166 ft., X = 554,795 ft., Zone 4)

Set an iron post, 30 ins. long, $2\frac{1}{2}$ ins. diam., 24 ins. in the ground, with brass cap mkd.

T33N R2W
S33

S5 | S4
T32N R2W
1969

from which

A spruce, 7 ins. diam., bears S. 40° E.,
 $52\frac{1}{2}$ lks. dist., mkd. T32N R2W S4 BT.

A spruce, 6 ins. diam., bears S. 35° W.,
65 lks. dist., mkd. T32N R2W S5 BT.

A spruce, 10 ins. diam., bears N. 10° W.,
61 lks. dist., mkd. T33N R2W S33 BT.

Set a fiberglas marker over and wired to the monument which is in a cleared area 50 ft. in diam.

This monument is located 130 ft. E. of the E. shore of a small lake, on level ground, and in dense spruce timber.

WEST, along the South boundary of T. 33 N., R. 2 W., beginning new dist.

- 37.40 Easterly shore of an unnamed lake, bears NW. and SE.
- 80.00 Point for the cor. of secs. 5 and 6, T. 32 N., R. 2 W.; not monumented.
- 93.96 Computed point of intersection with line 1-2, Lot 4, U.S. Survey No. 5517, at a point from which cor. No. 1, bears N. $0^{\circ}06'$ E., (record bearing), 18.86 chs. dist. and cor. No. 2, identical with cor. No. 1, Lots 5 and 6, bears S. $0^{\circ}06'$ W., (record bearing), 0.32 chs. dist.
- 152.23 Computed point of intersection with line 3-4, Lot 10, U.S. Survey No. 5517, at a point from which cor. No. 3, bears S. $32^{\circ}31'$ W., (record bearing) 1.21 chs. dist., and cor. No. 4, identical with cor. No. 1, Lot 11, bears N. $32^{\circ}31'$ E., (record bearing), 15.01 chs. dist. This is also the easterly easement line of the Anchorage-Fairbanks Highway.
- 154.41 Point for the cor. of Tps. 32 N., Rs. 2 and 3 W.; not monumented, at:

Lat. $62^{\circ}53'58.83''$ N., Long. $149^{\circ}43'57.35''$ W.
(Y = 3,252,069 ft., X = 544,605 ft., Zone 4)

EIGHTH STANDARD PARALLEL NORTH, ALONG THE
SOUTH BOUNDARY OF T. 33 N., R. 2 W., S.M.

CHAINS

165.59

The point for the standard cor. of Tps. 33 N., Rs. 2 and 3 W., thus established:

Occupying BLM control station "EC 85-8 G185 1969," turn a true forward bearing of S. 60°38'52" W., (back bearing N. 60°32'53" E.) and measure a dist. of 21,468 ft. (325.27 chs.) to a point; and occupying BLM control station "EC 85-9 G185 1969," turn a true forward bearing of S. 86°39'32" E., (back bearing N. 86°22'41" W.) and measure a dist. of 52,680 ft. (798.18 chs.) to the same point at:

Lat. 62°53'58.83" N., Long. 149°44'13.28" W.
(Y = 3,252,066 ft., X = 543,867 ft., Zone 4)

Set an iron post, 30 ins. long, 2½ ins. diam., 24 ins. in the ground, with brass cap mkd.

SC
T33N
R3W R2W
S36 | S31
—|—
S1
T32N
1969

from which

A birch, 12 ins. diam., bears N. 47° E.,
70 lks. dist., mkd. T33N R2W S31 SC BT.

A twin spruce, 9 ins. diam., bears N. 3° W.,
35 lks. dist., mkd. T33N R3W S36 SC BT.

Cor. No. 2, Lot 10, U.S. Survey No. 5517,
bears S. 38°37'42" E., (back bearing
N. 38°37'31" W.), 14.10 chs. dist.,
monumented with an iron post, 2½ ins.
diam., firmly set, mkd., and witnessed
as described in the official record.

Place a fiberglas marker over and wired to the monument,
which is at the center of a cleared area 50 ft. in diam.

This monument is located about 600 ft. W. of new highway,
on a W. slope, near the base of a low hill, covered with
spruce and birch timber.

NORTH BOUNDARY, FRACTIONAL T. 33 N., R. 2 W., S.M.

Beginning at the point for the cor. of secs. 13 and 18,
Tps. 33 N., Rs. 1 and 2 W., on the South boundary of the
Fairbanks Meridian, thus established:

Occupying BLM control station "EC 86-3 G186 1969," turn
a true forward bearing of S. 71°13'08" E., (back bearing
N. 70°55'49" W.) and measure a dist. of 56,977 ft.
(863.29 chs.) to a point; and occupying BLM control
station "EC 85-8 G185 1969," turn a true forward bearing
of N. 49°52'32" E., (back bearing S. 49°56'41" W.)
and measure a dist. of 16,926 ft. (256.45 chs.) to the
same point at:

Lat. 62°57'29.89" N., Long. 149°32'49.64" W.
(Y = 3,273,679 ft., X = 575,393 ft., Zone 4)

NORTH BOUNDARY, FRACTIONAL T. 33 N., R. 2 W., S.M.

CHAINS

Set an iron post, 30 ins. long, 2½ ins. diam., 24 ins. in the ground and in a mound of stone to top, with brass cap mkd.

T22S R10W
S31
S13 | S18
R2W | R1W

T33N
1969

Raise a mound of stone, 3 ft. base, 3 ft. high, S. of cor., 4½ lks. dist.

Place a fiberglas marker over and wired to the monument.

This monument is located on a SW. slope about 1½ miles NE. of Chulitna Butte on the flat crest of a ridge, about 30 ft. below the top. The area is open, with moss growing on a rocky soil.

WEST, along the North boundary, identical with a portion of the South boundary of the Fairbanks Meridian.

18.96 Point for the cor. of Tps. 22 S., Rs. 10 and 11 W., F.M., thus established:

Occupying BLM control station "EC 85-8 G185 1969," turn a true forward bearing of N. 46°59'15" E., (back bearing S. 47°03'00" W.) and measure a dist. of 15,988 ft. (242.24 chs.) to a point; and occupying BLM control station "EC 86-3 G186 1969," turn a true forward bearing of S. 70°47'57" E., (back bearing N. 70°31'02" W.) and measure a dist. of 55,795 ft., (845.38 chs.) to the same point at:

Lat. 62°57'29.89" N., Long. 149°33'16.71" W.
(Y = 3,273,670 ft., X = 574,141 ft., Zone 4)

Set an iron post, 30 ins. long, 2½ ins. diam., 26 ins. in the ground, with brass cap mkd.

T22S
R11W | R10W
S36 | S31
S13
T33N R2W
1969

from which

A boulder, bears S. 52° E., 3 lks. dist.,
mkd. S13 X BO.

Raise a mound of stone, 4 ft. base, 5 ft. high, E. of cor., 5 lks. dist.

Place a fiberglas marker over and wired to the monument.

This monument is located in the open, about 2½ miles NE. of Chulitna Butte on a steep, W. slope, about midway up the mountainside and at an elevation of 3100 ft. above sea level. The cor. is set in tundra moss growing on sandy and rocky soil.

NORTH BOUNDARY, FRACTIONAL T. 33 N., R. 2 W., S.M.

CHAINS		
	<p>WEST, along the North boundary, identical with a portion of the South boundary of the Fairbanks Meridian, beginning new dist.</p> <p>141.04 Point for the cor. of secs. 14 and 15, T. 33 N., R. 2 W., thus established:</p> <p>Occupying BLM control station "EC 86-3 G186 1969," compute a true forward bearing of S. 67°01'34" E., (back bearing N. 66°47'38" W.) and measure a dist. of 47,121 ft., (713.95 chs.) to a point; and occupying BLM control station "EC 86-4 G186 1969," compute a true forward bearing of S. 36°54'47" W. (back bearing N. 36°49'18" E.) and measure a dist. of 28,448 ft. (431.03 chs.) to the same point; and occupying BLM control station "EC 85-8 G185 1969," compute a true forward bearing of N. 12°19'45" E., (back bearing S. 12°20'31" W.) and measure a dist. of 11,158 ft., (169.06 chs.) to the same point at:</p> <p style="text-align: center;">Lat. 62°57'29.89" N., Long. 149°36'37.98" W. (Y = 3,273,609 ft., X = 564,834 ft., Zone 4)</p> <p>Set an iron post, 30 ins. long, 2½ ins. diam., 24 ins. in the ground, with brass cap mkd.</p> <p style="text-align: center;">T22S R11W S35 S15 S14 T33N R2W 1969</p> <p>from which</p> <p>A spruce, 6 ins. diam., bears N. 58° E., 70 lks. dist., mkd. T22S R11W S35 BT.</p> <p>A spruce, 16 ins. diam., bears S. 8° E., 29 lks. dist., mkd. T33N R2W S14 BT.</p> <p>A spruce, 10 ins. diam., bears S. 83° W., 72 lks. dist., mkd. T33N R2W S15 BT.</p> <p>Place a fiberglas marker over and wired to the monument, which is at the center of a cleared area 50 ft. in diam.</p> <p>This monument is located about 2 miles N. of Chulitna Butte, in rolling foot hills. The ground has a slight slope to S. and the vegetation is scattered spruce with alders. The soil is a clay and sandy loam. A small creek, flowing SE. is northerly of the cor. about 600 ft. dist.</p>	
<p>58.96</p>	<p>WEST, along the North boundary, identical with a portion of the South boundary of the Fairbanks Meridian.</p> <p>Point for the ¼ sec. cor. of sec. 34, T. 22 S., R. 11 W., F.M., thus established:</p> <p>Occupying BLM control station "EC 86-4 G186 1969," turn a true forward bearing of S. 42°41'36" W., (back bearing N. 42°34'52" E.) and measure a dist. of 30,937 ft. (468.74 chs.) to a point; and occupying BLM control station "EC 85-8 G185 1969," turn a true forward bearing of N. 7°52'56" W., (back bearing S. 7°53'25" E.) and measure a dist. of 11,004 ft., (166.73 chs.) to the same point at:</p>	

NORTH BOUNDARY, FRACTIONAL T. 33 N., R. 2 W., S.M.

CHAINS

Lat. $62^{\circ}57'29.89''$ N., Long. $149^{\circ}38'02.12''$ W.
(Y = 3,273,586 ft., X = 560,943 ft., Zone 4)

Set an iron post, 30 ins. long, $2\frac{1}{2}$ ins. diam., 24 ins. in the ground, with brass cap mkd.

T22S R11W
 $\frac{1}{4}$ S34
1969

from which

A spruce, 5 ins. diam., bears S. 25° E.,
55 lks. dist., mkd. X BT.

A spruce, 5 ins. diam., bears N. 33° W.,
40 lks. dist., mkd. T22S R11W $\frac{1}{4}$ S34 BT.

Place a fiberglas marker over and wired to the monument, which is at the center of a cleared area 50 ft. in diam.

This monument is located about $\frac{1}{4}$ mile E. of Mile Post 280 on the Alaska Railroad. The cor. is situated on a gentle W. slope, in dense alders and scattered spruce timber on good loam soil.

WEST, along the North boundary, identical with a portion of the South boundary of the Fairbanks Meridian, beginning new dist.

46.23 Approximate centerline of the Alaska Railroad, bears NE. and SW.

48.41 Point selected for a witness point bet. sec. 16, T. 33 N., R. 2 W., S.M., and sec. 33, T. 22 S., R. 11 W., F.M., thus established:

Occupying BLM control station "EC 86-3 G186 1969," compute a true forward bearing of S. $63^{\circ}05'41''$ E., (back bearing N. $62^{\circ}54'02''$ W.) and measure a dist. of 40,703 ft., (616.71 chs.) to a point; and occupying BLM control station "EC 86-4 G186 1969," compute a true forward bearing of S. $46^{\circ}45'32''$ W., (back bearing N. $46^{\circ}37'47''$ E.) and measure a dist. of 33,182 ft., (502.76 chs.) to the same point; and occupying BLM control station "EC 85-8 G185 1969," compute a true forward bearing of N. $23^{\circ}20'30''$ W., (back bearing S. $23^{\circ}22'00''$ E.) and measure a dist. of 11,873 ft., (179.89 chs.) to the same point at:

Lat. $62^{\circ}57'29.89''$ N., Long. $149^{\circ}39'11.21''$ W.
(Y = 3,273,569 ft., X = 557,748 ft., Zone 4)

Set an iron post, 30 ins. long, $2\frac{1}{2}$ ins. diam., 24 ins. in the ground, with brass cap mkd.

WP
T22S R11W
S33
S16
T33N R2W
1969

from which

A spruce, 8 ins. diam., bears N. 65° E.,
101 lks. dist., mkd. T22S R11W S33 WP BT.

NORTH BOUNDARY, FRACTIONAL T. 33 N., R. 2 W., S.M.

CHAINS	
	<p>A spruce, 7 ins. diam., bears S. 23° E., 83½ lks. dist., mkd. T33N R2W S16 WP BT.</p> <p>Place a fiberglas marker over and wired to the monument, which is at the center of a cleared area 50 ft. in diam.</p> <p>This monument is located about 1½ miles S. of Hurricane Station, and 144 ft. W. of the centerline of the Alaska Railroad. The monument is set at the E. edge of a swamp, in dense willows and scattered spruce timber.</p>
	<p>WEST, along the North boundary, identical with a portion of the South boundary of the Fairbanks Meridian, beginning new dist.</p>
31.59	<p>Point for the ¼ sec. cor. of sec. 33, T. 22 S., R. 11 W., F.M., thus established:</p> <p>Occupying BLM control station "EC 86-3 G186 1969," compute a true forward bearing of S. 61°41'41" E., (back bearing N. 61°30'42" W.) and measure a dist. of 38,858 ft., (588.76 chs.) to a point; and occupying BLM control station "EC 86-4 G186 1969," compute a true forward bear- ing of S. 49°07'22" W., (back bearing N. 48°58'56" E.) and measure a dist. of 34,727 ft., (526.17 chs.) to the same point; and occupying BLM control station "EC 85-8 G185 1969," compute a true forward bearing of N. 31°54'41" W., (back bearing S. 31°56'52" E.) and measure a dist of 12,843 ft., (194.59 chs.) to the same point at:</p> <p style="text-align: center;">Lat. 62°57'29.89" N., Long. 149°39'56.29" W. (Y = 3,273,558 ft., X = 555,663 ft., Zone 4)</p> <p>Set an iron post, 30 ins. long, 2½ ins. diam., 24 ins. in the ground, with brass cap mkd.</p> <p style="text-align: center;">T22S R11W ¼ S33 1969</p> <p>from which</p> <p>A spruce, 9 ins. diam., bears N. 55° E., 45 lks. dist., mkd. T22S R11W ¼ S33 BT.</p> <p>A spruce, 12 ins. diam., bears S. 34° E., 81 lks. dist., mkd. X BT.</p> <p>Place a fiberglas marker over and wired to the monument, which is at the center of a cleared area 50 ft. in diam.</p> <p>This monument is located about ½ mile W. of Mile Post 280 on the Alaska Railroad. The monument is set on a gentle E. slope in spruce timber.</p>
101.04	<p>WEST, along the North boundary, identical with a portion of the South boundary of the Fairbanks Meridian, beginning new dist.</p>
	<p>Point for the cor. of secs. 17 and 18, T. 33 N., R. 2 W., S.M.; not monumented.</p>
138.00	<p>E. bank Chulitna River, course SW.</p>

NORTH BOUNDARY, FRACTIONAL T. 33 N., R. 2 W., S.M.

CHAINS
180.08

Point for the cor. of secs. 13 and 18, Tps. 33 N., Rs. 2 and 3 W., thus established:

Occupying BLM control station "EC 86-3 G186 1969," compute a true forward bearing of S. 50°25'15" E., (back bearing N. 50°18'05" W.) and measure a dist. of 28,968 ft., (438.91 chs.) to a point; and occupying BLM control station "EC 86-4 G186 1969," compute a true forward bearing of S. 59°15'06" W., (back bearing N. 59°02'51" E.) and measure a dist. of 44,382 ft. (672.45 chs.) to the same point; and occupying BLM control station "EC 85-8 G185 1969," compute a true forward bearing of N. 59°41'26" W., (back bearing S. 59°47'25" E.) and measure a dist. of 21,631 ft., (327.74 chs.) to the same point at:

Lat. 62°57'29.89" N., Long. 149°44'13.28" W.
(Y = 3,273,503 ft., X = 543,780 ft., Zone 4)

Set an iron post, 30 ins. long, 2½ ins. diam., 24 ins. in the ground, with brass cap mkd.

T22S R11W
S31
S13|S18
R3W R2W
T33N
1969

from which

A spruce, 16 ins. diam., bears S. 62° E.,
97½ lks. dist., mkd. T33N R2W S18 BT.

A spruce, 9 ins. diam., bears S. 65° W.,
36½ lks. dist., mkd. T33N R3W S13 BT.

A spruce, 5 ins. diam., bears N. 9° W.,
35 lks. dist., mkd. T22S R11W S31 BT.

Place a fiberglas marker over and wired to the monument, which is at the center of a cleared area 50 ft. in diam.

This monument is located on level ground and in dense alders, with scattered spruce and birch timber. The soil is loam, 18 ins. deep, over clay.

EAST BOUNDARY, FRACTIONAL T. 33 N., R. 2 W., S.M.

From the point for the standard cor. of Tps. 33 N., Rs. 1 and 2 W., hereinbefore described.

NORTH, through T. 33 N., bet. Rs. 1 and 2 W.

160.00

Point for the cor. of secs. 19, 24, 25, and 30, thus established:

Occupying BLM control station "EC 86-3 G186 1969," compute a true forward bearing of S. 61°34'41" E., (back bearing N. 61°17'22" W.) and measure a dist. of 61,399 ft., (930.29 chs.) to a point; and occupying BLM control station "EC 85-8 G185 1969," compute a true forward bearing of N. 89°52'25" E., (back bearing S. 89°56'34" W.) and measure a dist. of 12,956 ft., (196.30 chs.) to the same point; and occupying BLM control station "EC 85-9 G185 1969," compute a true forward bearing of N. 84°46'48" E., (back bearing

EAST BOUNDARY, FRACTIONAL T. 33 N., R. 2 W., S.M.

CHAINS	<p>S. 85°13'47" W.) and measure a dist. of 84,538 ft., (1,280.88 chs.) to the same point at:</p> <p style="text-align: center;">Lat. 62°55'42.79" N., Long. 149°32'49.64" W. (Y = 3,262,800 ft., X = 575,469 ft., Zone 4)</p> <p>Set an iron post, 30 ins. long, 2½ ins. diam., 20 ins. in the ground and in a mound of stone to top, with brass cap mkd.</p> <div style="text-align: center; margin: 10px 0;"> <table style="margin: auto; border-collapse: collapse;"> <tr><td colspan="2">T33N</td></tr> <tr><td>R2W</td><td>R1W</td></tr> <tr><td style="border-right: 1px solid black;">S24</td><td>S19</td></tr> <tr><td style="border-right: 1px solid black;">S25</td><td>S30</td></tr> <tr><td colspan="2">1969</td></tr> </table> </div> <p>from which</p> <p style="margin-left: 40px;">Meander cor. No. 1, U.S. Survey No. 4782, identical with meander cor. No. 1, Lot 1, U.S. Survey No. 5515, bears S. 50°21'23" W. (back bearing N. 50°18'07" E.) 200.99 chs. dist., monumented with an iron post, 2½ ins. diam., firmly set, mkd., and witnessed as described in the official record.</p> <p style="margin-left: 40px;">Cor. No. 4, U.S. Survey No. 3075, bears S. 73°18'45" W., (back bearing N. 73°14'31" E.), 208.92 chs. dist., previously described.</p> <p>Raise a mound of stone, 4 ft. base, 3 ft. high, N. of cor., 7 lks. dist.</p> <p>Place a fiberglas marker over and wired to the monument.</p> <p>This monument is located 2 miles E. of Chulitna Butte, on a W. slope at an elevation of 2950 ft. above sea level. The monument is situated on a small semi-level hump, bet. two talus rock slides. There is no vegetation other than ground moss.</p>	T33N		R2W	R1W	S24	S19	S25	S30	1969	
T33N											
R2W	R1W										
S24	S19										
S25	S30										
1969											
80.00	<p>NORTH, bet. Rs. 1 and 2 W., beginning new dist.</p> <p>Point for the cor. of secs. 13, 18, 19, and 24; not monumented.</p>										
164.84	<p>The cor. of secs. 13 and 18 on the South boundary of the Fairbanks Meridian.</p>										
<p>WEST BOUNDARY, FRACTIONAL T. 33 N., R. 2 W., S.M.</p>											
96.00	<p>From the standard cor. of Tps. 33 N., Rs. 2 and 3 W.; hereinbefore described.</p> <p>NORTH, through T. 33 N., bet. Rs. 2 and 3 W.</p> <p>N. bank of Chulitna River, course W.</p>										
160.00	<p>Point for the cor. of secs. 19, 24, 25, and 30, thus established:</p> <p>Occupying BLM control station "EC 85-9 G185 1969," turn a true forward bearing of N. 81°53'14" E., (back bearing S. 82°10'04" W.) and measure a dist. of 53,070 ft. (804.09 chs.) to a point; and occupying BLM control</p>										

WEST BOUNDARY, FRACTIONAL T. 33 N., R. 2 W., S.M.

CHAINS

station "EC 85-8 G185 1969," turn a true forward bearing of N. 89°53'11" W., (back bearing S. 89°59'10" E.) and measure a dist. of 18,693 ft. (283.23 chs.) to the same point at:

Lat. 62°55'42.79" N., Long. 149°44'13.28" W.
(Y = 3,262,624 ft., X = 543,824 ft., Zone 4)

Set an iron post, 30 ins. long, 2½ ins. diam., 24 ins. in the ground, with brass cap mkd.

T33N
R3W R2W
S24 | S19
S25 | S30
1969

from which

A birch, 9 ins. diam., bears N. 45° E.,
64 lks. dist., mkd. T33N R2W S19 BT.

A spruce, 10 ins. diam., bears S. 23° E.,
83 lks. dist., mkd. T33N R2W S30 BT.

A spruce, 8 ins. diam., bears S. 43° W.,
157 lks. dist., mkd. T33N R3W S25 BT.

A spruce, 9 ins. diam., bears N. 37° W.,
81 lks. dist., mkd. T33N R3W S24 BT.

Cor. No. 2, Lot 2, U.S. Survey No. 5516,
bears N. 65°30'22" E., (back bearing
S. 65°33'54" W.), 183.89 chs. dist.,
previously described.

Place a fiberglas marker over and wired to the monument,
which is at the center of a cleared area 50 ft. in diam.

This monument is located about 3½ miles W. of Chulitna
Butte and about ¾ mile N. of the Chulitna River in a
small clearing in clay gravel soil.

NORTH, bet. Rs. 2 and 3 W., beginning new dist.

80.00 Point for the cor. of secs. 13, 18, 19, and 24; not
monumented.

164.84 The cor. of secs. 13 and 18 on the South boundary of the
Fairbanks Meridian.

GENERAL DESCRIPTION

The center of this survey is located about 2 miles north-
west of Chulitna Station, on the Alaska Railroad.

The area of survey is generally mountainous; the highest
elevations attained are on the East boundary of the
survey, exceeding 4,000 feet above sea level.

The central portion of this township is relatively level,
especially near Pass Creek, a southwest flowing stream
that drains the center of the survey.

TOWNSHIP 33 NORTH, RANGE 2 WEST, SEWARD MERIDIAN

CHAINS

Also in the same area, is a high hill, known as Chulitna Butte. The butte is covered with spruce and birch timber, as is the neighboring area. Above timberline, only alder brush and moss are found.

Summit Lake, near Chulitna Pass and other small unnamed lakes are present within the survey.

Stretches of the Chulitna River, flowing southerly, parallel part of the West boundary of the survey. The river is a braided stream and forms wide flood plains and terraces.

Five miles of the Alaska Railroad traverses northerly and southerly through the central portion of the survey.

Numerous patented claims exist along the new Anchorage-Fairbanks Highway, which was under construction during the time of this survey, and patented claims exist also along the Alaska Railroad.

Transportation of personnel and equipment for the execution of this survey was accomplished by trucks and helicopters.

Form 9180-8
(March 1969)

UNITED STATES
DEPARTMENT OF THE INTERIOR
BUREAU OF LAND MANAGEMENT

FIELD ASSISTANTS

NAMES	CAPACITY
John M. Baldessari	Cadastral Surveyor
Charles Wettling	Cadastral Surveyor
Albert Bianchi	Surveying Technician
Ethan P. Cowles	Surveying Technician
Bernard J. Jacoby	Surveying Technician
Michael Kelly	Surveying Technician
Gilbert M. Nostrant	Surveying Technician
Fred M. Goodhope, Jr.	Survey Aid
Jerome Pape	Survey Aid
David W. Hyatt	Survey Aid
Thomas L. Green	Survey Aid
James P. Moritz	Survey Aid

CERTIFICATE OF SURVEY

(I) ~~(We)~~, Frederick W. Ward, HEREBY CERTIFY upon honor that, in pursuance of special instructions bearing date of the 17th day of July, 1968, ~~(I)(We) have~~ and supplemental special instructions dated February 13, 1969, and July 11, 1969, I have surveyed the Eighth Standard Parallel North, along the South boundary, the North boundary, along the South boundary of the Fairbanks Meridian and the East and West boundaries of fractional Township 33 North, Range 2 West,

of the Seward Meridian, in the State of Alaska, which are represented in the foregoing field notes as having been executed by (me), ~~(us)~~ and under (my) ~~(our)~~ direction; and that said survey has been made in strict conformity with said special instructions, the Manual of Instructions for the Survey of the Public Lands of the United States, and in specific manner described in the foregoing field notes.

July 25, 1977
(Date)

Frederick W. Ward
(Cadastral Surveyor)
Frederick W. Ward
Supervisory Cadastral Surveyor

(Date)

(Cadastral Surveyor)

CERTIFICATE OF APPROVAL

BUREAU OF LAND MANAGEMENT
Washington, D.C.

The foregoing field notes of the survey of the Eighth Standard Parallel North, along the South boundary, the North boundary, along the South boundary of the Fairbanks Meridian and the East and West boundaries of fractional Township 33 North, Range 2 West, Seward Meridian, Alaska, executed by Frederick W. Ward, Supervisory Cadastral Surveyor, having been critically examined and found correct, are hereby approved.

MAY 20 1977
(Date)

Bernard W. J. [Signature]
(Chief, Division of Cadastral Survey)

CERTIFICATE OF TRANSCRIPT

I CERTIFY That the foregoing transcript of the field notes of the above-described surveys in _____, is a true copy of the original field notes.

(Date)

(Chief, Division of Cadastral Survey) GPO 849-626