

PROPERTY MAP
RICHARDSON HIGHWAY
 Big Delta To Fairbanks, Alaska

IN 4 SHEETS SCALE: 1" = 1000' SHEET NO. 1

OFFICE OF REAL ESTATE DIRECTOR, ALASKAN DEPARTMENT
 ANCHORAGE, ALASKA

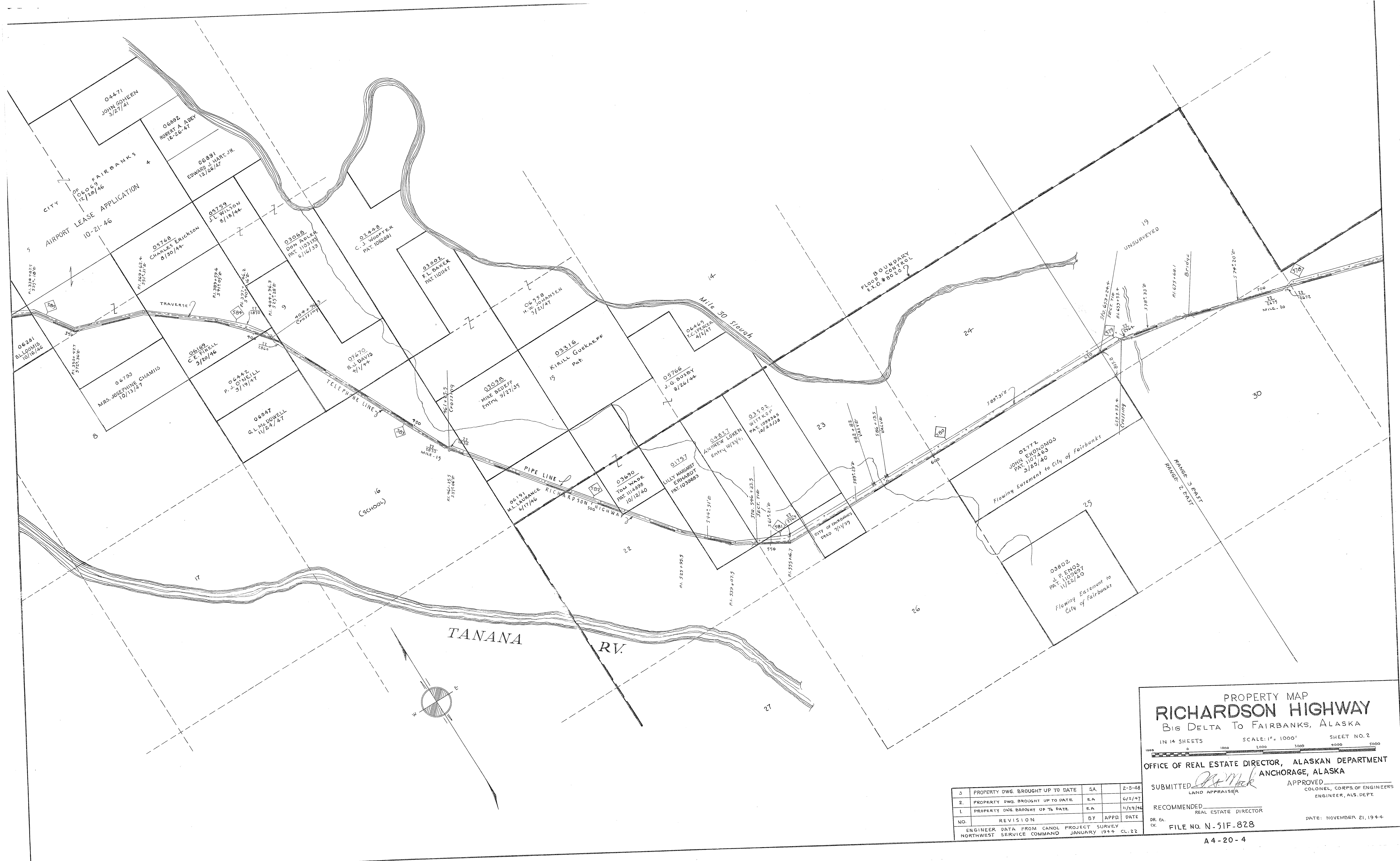
SUBMITTED *J.P. Mack* APPROVED _____
 LAND APPRAISER COLONEL, CORPS. OF ENGINEERS
 ENGINEER, ALS. DEPT.

RECOMMENDED _____
 REAL ESTATE DIRECTOR

OR - SA DATE: NOVEMBER 22, 1944
 FILE NO. N.51F-828

3	PROPERTY DWG. BROUGHT UP TO DATE	S.A.	2-5-48
2	PROPERTY DWG. BROUGHT UP TO DATE	EA	6/2/47
1	PROPERTY DWG. BROUGHT UP TO DATE	EA	11/19/46
NO.	REVISION	BY	APPD. DATE
ENGINEER DATA FROM CANOL PROJECT SURVEY NORTHWEST SERVICE COMMAND JANUARY 1944 CL-22			

N
51F
828



PROPERTY MAP
RICHARDSON HIGHWAY
 Big Delta To Fairbanks, Alaska

IN 14 SHEETS SCALE: 1" = 1000' SHEET NO. 2

OFFICE OF REAL ESTATE DIRECTOR, ALASKAN DEPARTMENT
 ANCHORAGE, ALASKA

SUBMITTED *[Signature]* APPROVED
 LAND APPRAISER COLONEL, CORPS OF ENGINEERS
 ENGINEER, ALS. DEPT.

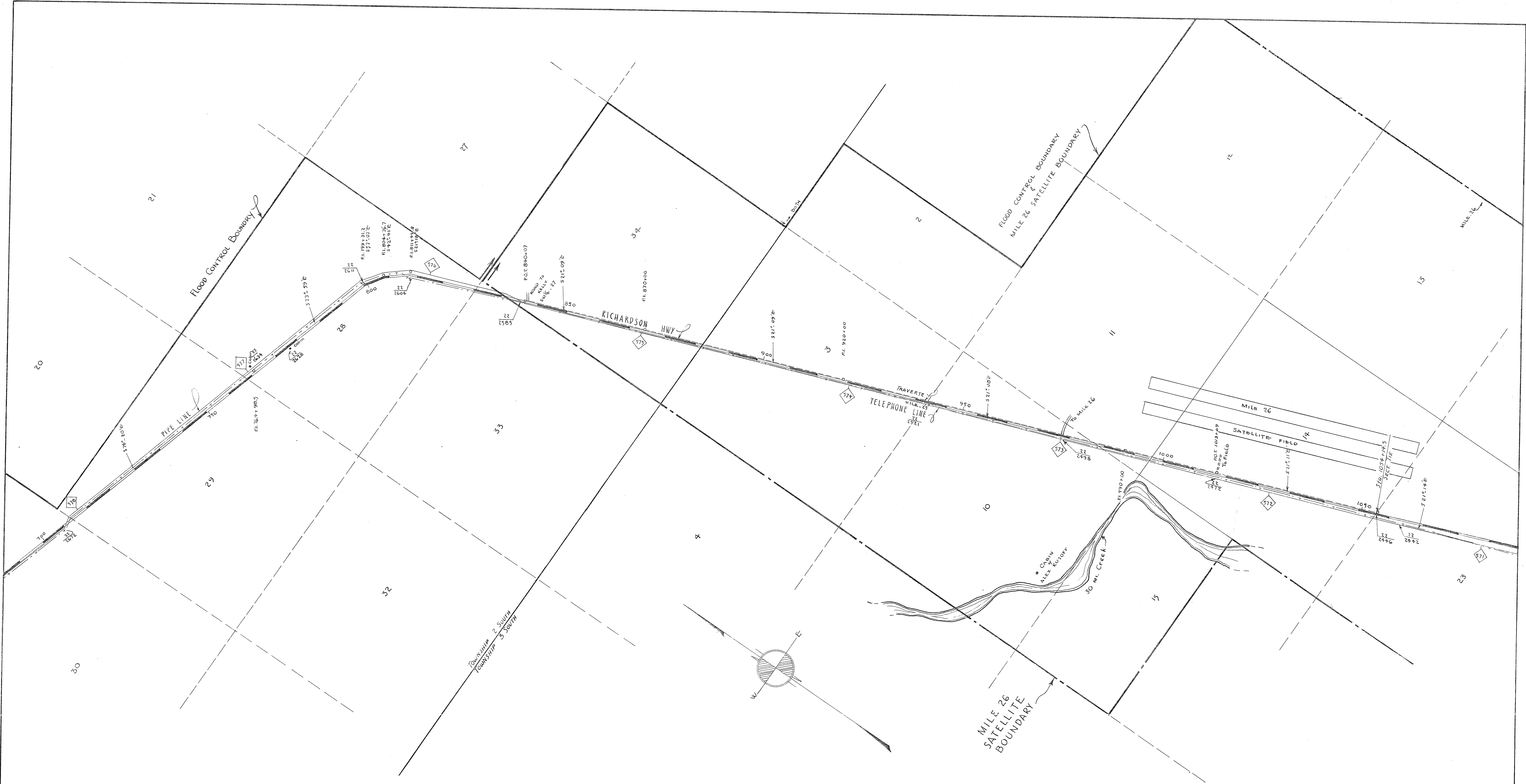
RECOMMENDED _____
 REAL ESTATE DIRECTOR

DR. EA. FILE NO. N-51F-828 DATE: NOVEMBER 21, 1944
 CK.

3	PROPERTY DWG. BROUGHT UP TO DATE	SA.	2-5-48
2	PROPERTY DWG. BROUGHT UP TO DATE	EA.	6/2/47
1	PROPERTY DWG. BROUGHT UP TO DATE	EA.	11/29/46
NO.	REVISION	BY	APPD. DATE
ENGINEER DATA FROM CANOL PROJECT SURVEY NORTHWEST SERVICE COMMAND JANUARY 1944 CL. 22			

N
 51F
 828

A4-20-4



PROPERTY MAP
RICHARDSON HIGHWAY
 Big Delta To Fairbanks, ALASKA
 IN 14 SHEETS SCALE: 1" = 1000' SHEET NO. 3

OFFICE OF REAL ESTATE DIRECTOR, ALASKAN DEPARTMENT
 ANCHORAGE, ALASKA
 SUBMITTED *[Signature]* LAND APPRAISER
 APPROVED *[Signature]* COLONEL, CORPS. OF ENGINEERS
 ENGINEER, ALS. DEPT.
 RECOMMENDED *[Signature]* REAL ESTATE DIRECTOR

NO.	REVISION	BY	APPR.	DATE

ENGINEER DATA FROM CANOL PROJECT SURVEY
 NORTHWEST SERVICE COMMAND JANUARY 1964 CL-22
 DR. EA
 CK
 FILE NO. N-51F-828
 DATE: NOVEMBER 18, 1944.



PROPERTY MAP
RICHARDSON HIGHWAY
 Big Delta To Fairbanks, ALASKA

IN 14 SHEETS SCALE: 1" = 1000' SHEET NO. 4

OFFICE OF REAL ESTATE DIRECTOR ALASKAN DEPARTMENT
 ANCHORAGE, ALASKA

SUBMITTED *C. S. Mark* APPROVED
 LAND APPRAISER COLONEL, CORPS. OF ENGINEERS
 ENGINEER, ALS. DEPT.

RECOMMENDED
 REAL ESTATE DIRECTOR

DR. SA. DATE: NOVEMBER 11, 1944
 CK. FILE NO. N-51F-828

NO.	REVISION	BY	APPD	DATE
2	OWNERSHIP DATA & SHORELINE CORRECTED	S.A.		4-22-48
1	PROPERTY DWG. BROUGHT UP TO DATE	E.A.		6/2/47
ENGINEER DATA FROM CANOL PROJECT SURVEY NORTHWEST SERVICE COMMAND JANUARY 1944 CL-22				



PROPERTY MAP
RICHARDSON HIGHWAY
 Big Delta To Fairbanks, ALASKA

IN 14 SHEETS SCALE: 1" = 1000' SHEET NO. 5

OFFICE OF REAL ESTATE DIRECTOR ALASKAN DEPARTMENT
 ANCHORAGE, ALASKA

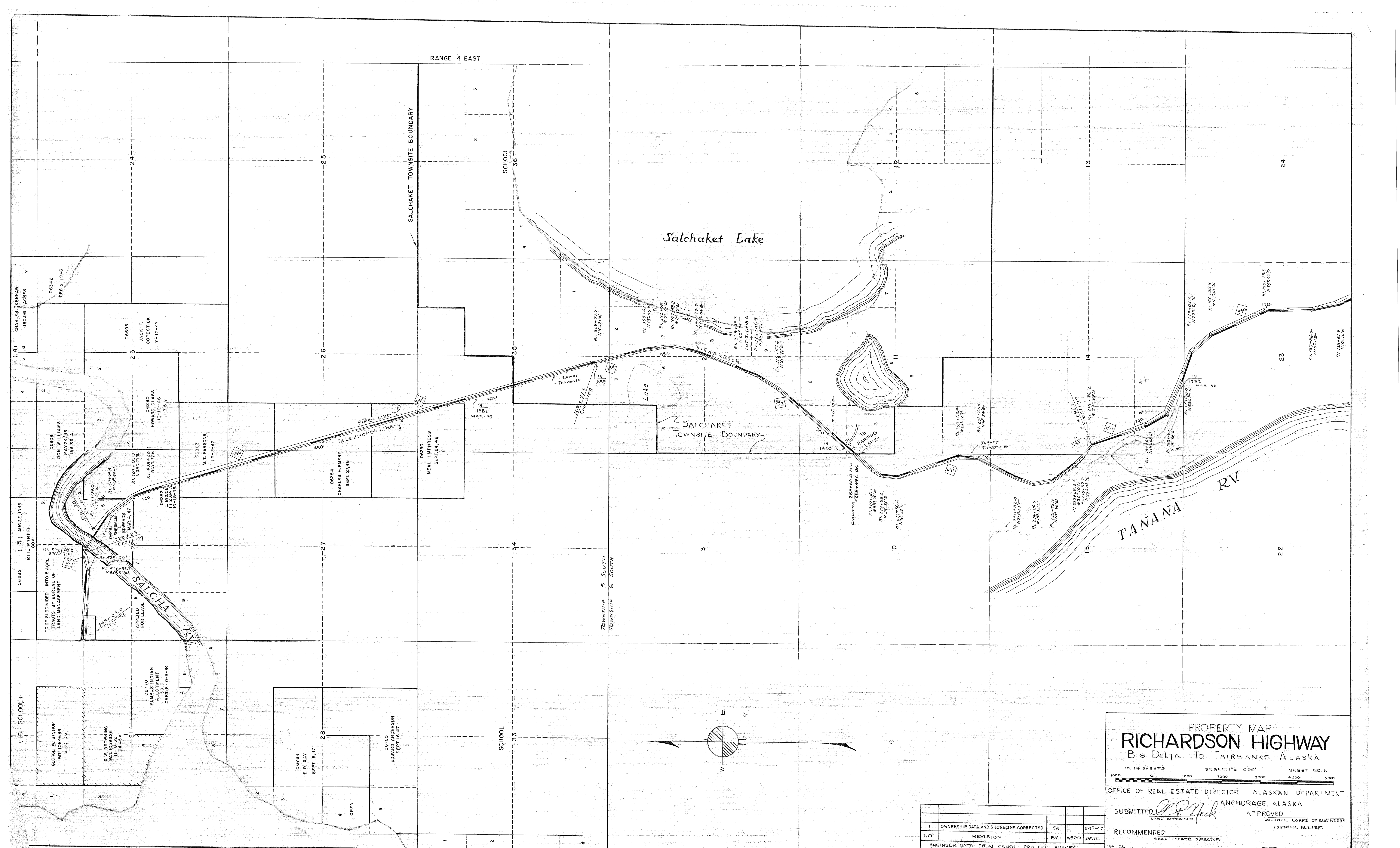
SUBMITTED *[Signature]* APPROVED
 LAND APPRAISER COLONEL, CORPS OF ENGINEERS
 ENGINEER, ALS DEPT.

RECOMMENDED
 REAL ESTATE DIRECTOR

DR. DA. FILE NO. N-51F-828 DATE: NOVEMBER 10, 1944

NO.	REVISION	BY	APPR	DATE
2	OWNERSHIP DATA & SHORELINE CORRECTED	SA		5/3/48
1	PROPERTY PWG. BROUGHT UP TO DATE.	EA		4/2/41
NO.	REVISION	BY	APPR	DATE

ENGINEER DATA FROM CANOL PROJECT SURVEY
 NORTHWEST SERVICE COMMAND JANUARY 1944 CL-22



PROPERTY MAP
RICHARDSON HIGHWAY
 Big Delta To Fairbanks, Alaska

IN 14 SHEETS SCALE: 1" = 1000' SHEET NO. 6
 0 1000 2000 3000 4000 5000

OFFICE OF REAL ESTATE DIRECTOR ALASKAN DEPARTMENT
 ANCHORAGE, ALASKA

SUBMITTED *L.P. Mack*
 LAND APPRAISER

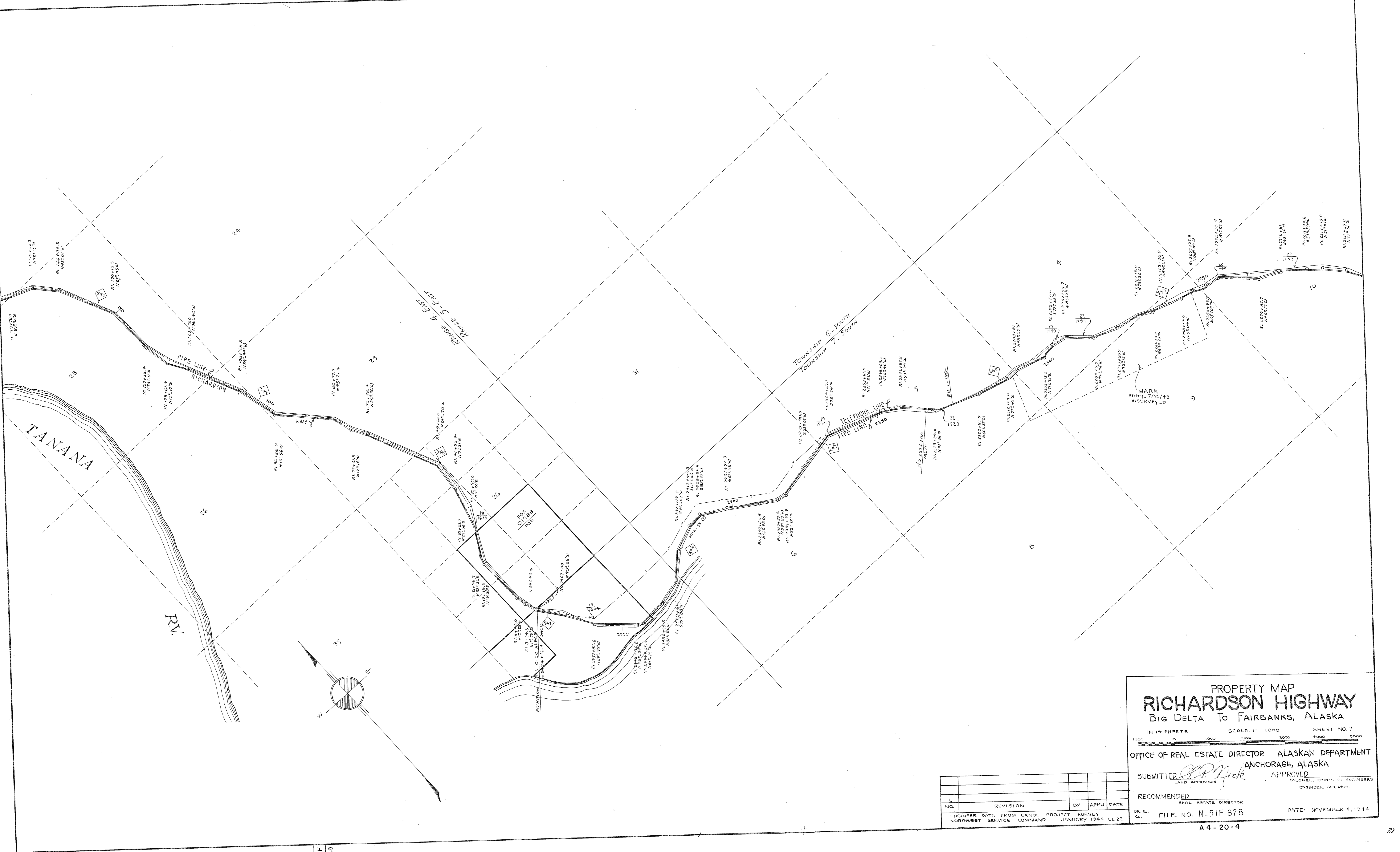
APPROVED
 COLONEL, CORPS OF ENGINEERS
 ENGINEER, ALS. DEPT.

RECOMMENDED
 REAL ESTATE DIRECTOR

NO.	REVISION	BY	APPD.	DATE
1	OWNERSHIP DATA AND SHORELINE CORRECTED	SA		5-10-47
ENGINEER DATA FROM CANOL PROJECT SURVEY NORTHWEST SERVICE COMMAND JANUARY 1944 CL-22				

DR. SA. FILE NO. N-51F-828 DATE: NOVEMBER 7, 1944

N 51F 828



PROPERTY MAP
RICHARDSON HIGHWAY
 Big Delta To Fairbanks, Alaska

IN 14 SHEETS SCALE: 1" = 1000' SHEET NO. 7



OFFICE OF REAL ESTATE DIRECTOR ALASKAN DEPARTMENT
 ANCHORAGE, ALASKA

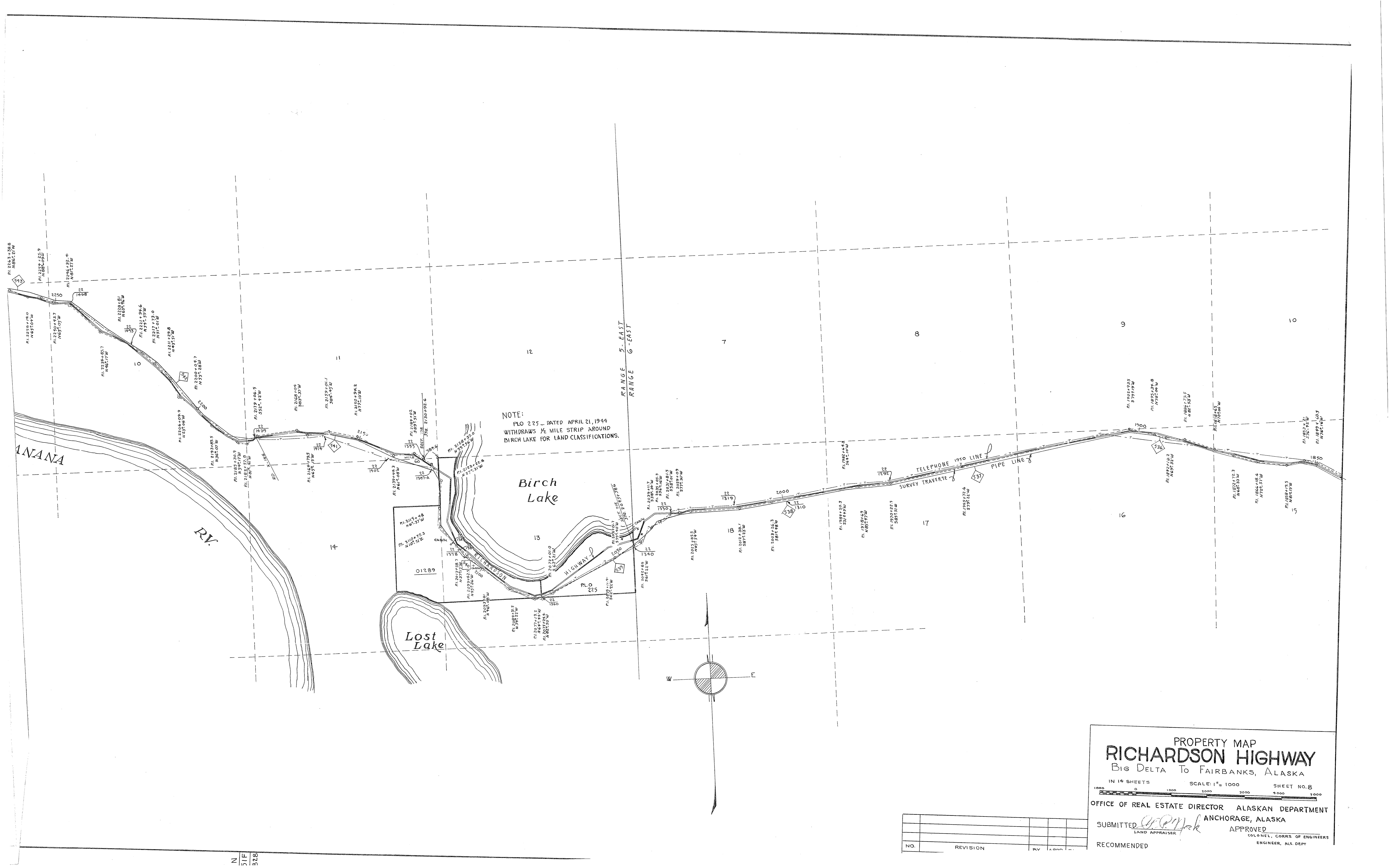
SUBMITTED *[Signature]* APPROVED
 LAND APPRAISER COLONEL, CORPS OF ENGINEERS
 ENGINEER, ALS. DEPT.

RECOMMENDED
 REAL ESTATE DIRECTOR

NO.	REVISION	BY	APPD	DATE

ENGINEER DATA FROM CANOL PROJECT SURVEY
 NORTHWEST SERVICE COMMAND JANUARY 1944 CL-22

DR. SA. FILE NO. N.51F-828 DATE: NOVEMBER 4, 1944

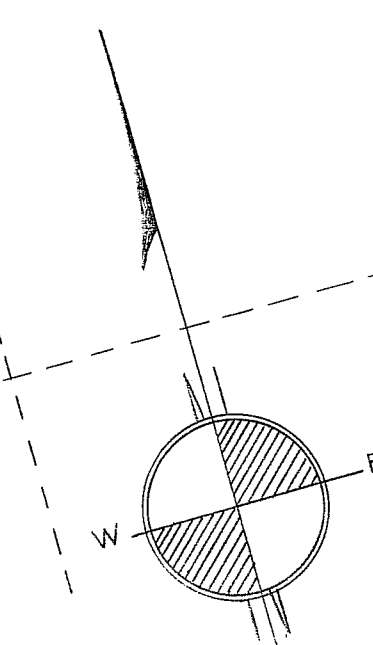
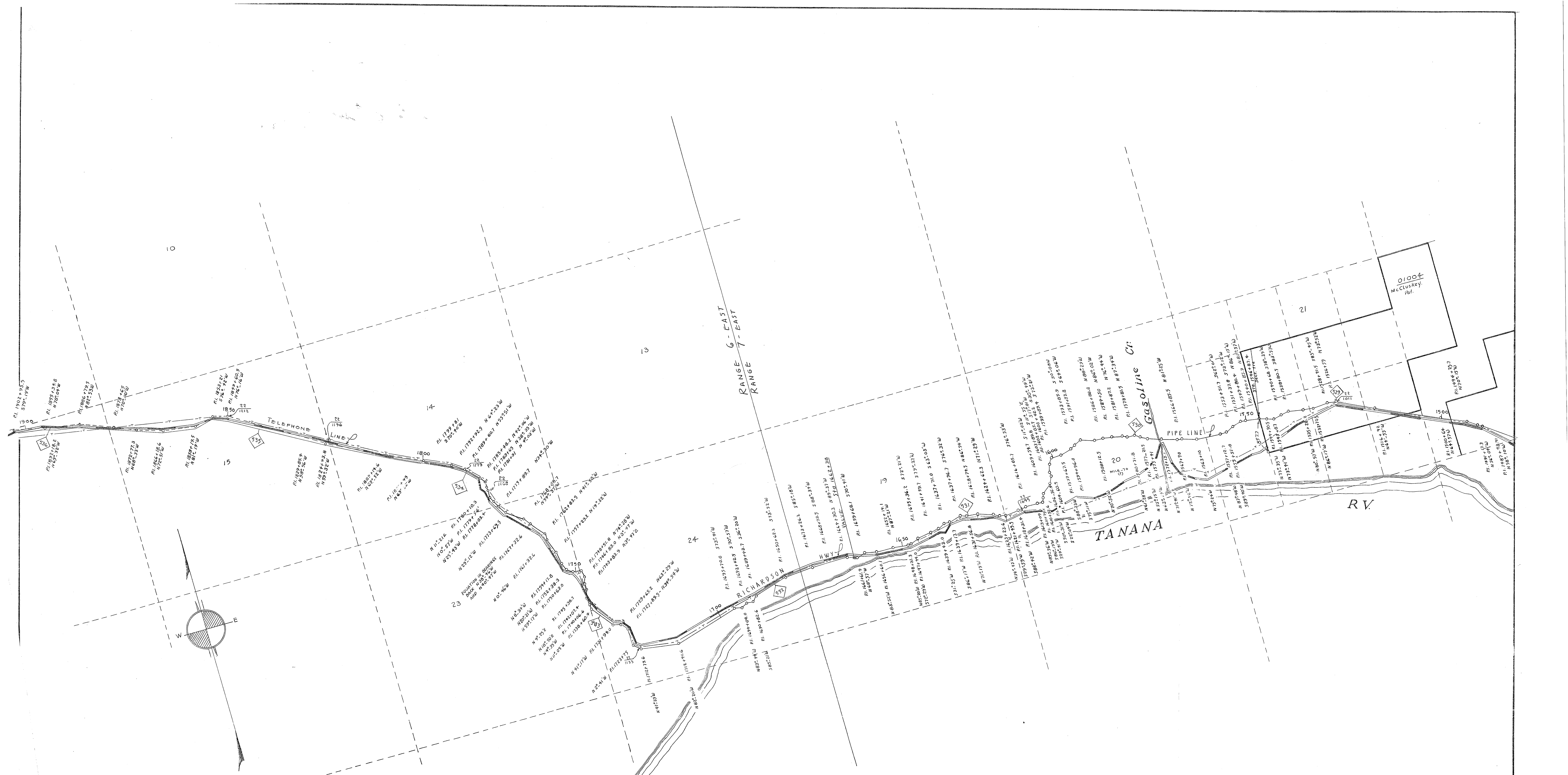


NOTE:
 PLO 225 - DATED APRIL 21, 1944
 WITHDRAWS 1/2 MILE STRIP AROUND
 BIRCH LAKE FOR LAND CLASSIFICATIONS.

PROPERTY MAP
RICHARDSON HIGHWAY
 BIG DELTA TO FAIRBANKS, ALASKA
 IN 14 SHEETS SCALE: 1" = 1000 SHEET NO. 8
 OFFICE OF REAL ESTATE DIRECTOR ALASKAN DEPARTMENT
 ANCHORAGE, ALASKA
 SUBMITTED *G.P. Mack* APPROVED
 LAND APPRAISER COLONEL, CORRS. OF ENGINEERS
 RECOMMENDED ENGINEER, ALS. DEPT.

NO.	REVISION	BY	DATE

N
 31 F
 322



PROPERTY MAP
RICHARDSON HIGHWAY
 Big Delta To Fairbanks, Alaska

IN 4 SHEETS SCALE: 1" = 1000 SHEET NO. 9

OFFICE OF REAL ESTATE DIRECTOR ALASKAN DEPARTMENT
 ANCHORAGE, ALASKA

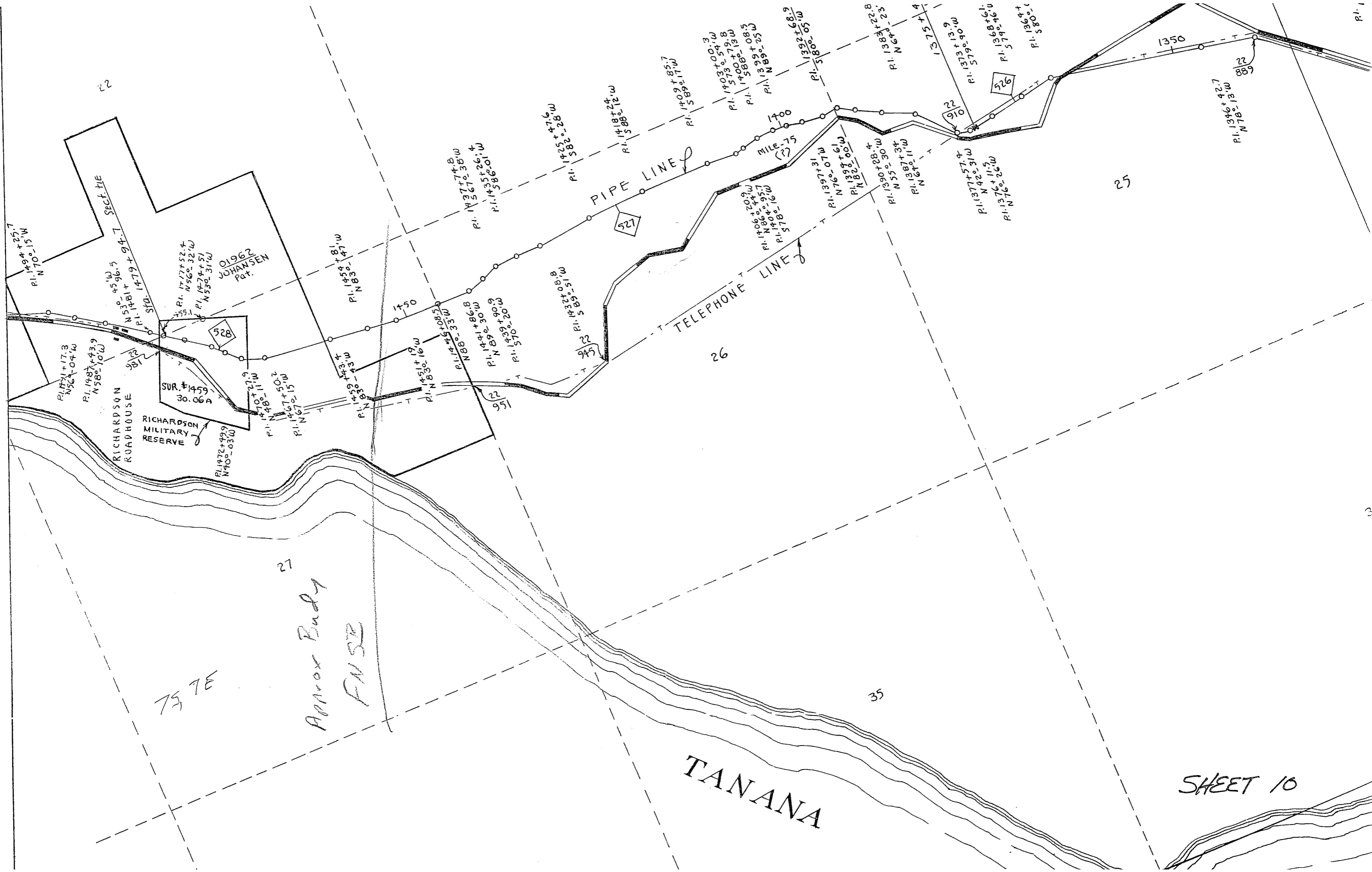
SUBMITTED *Openlock* APPROVED
 LAND APPRAISER COLONEL, CORPS OF ENGINEERS
 ENGINEER, ALS. DEPT.

RECOMMENDED
 REAL ESTATE DIRECTOR
 DR. SA. FILE NO. N-51F-828 DATE: NOVEMBER 1, 1944
 CC. PATE: NOVEMBER 1, 1944

NO.	REVISION	BY	APPD.	DATE

ENGINEER DATA FROM CANOL PROJECT SURVEY
 NORTHWEST SERVICE COMMAND JANUARY 1944 CL-22

N
 51F
 828



22

25

26

27

35

P. 1

3

SECT. TIE

PIPE LINE

TELEPHONE LINE

RICHARDSON ROADHOUSE
RICHARDSON MILITARY RESERVE

TANANA

SHEET 10

75 7E

Approx Budy
FMSR

01962
JOHANSEN
Pat.

SUR. #1459
30.06A

P. 1. 1494 + 25.7
N 70° 15' W

P. 1. 1471 + 17.3
N 56° 04' W

P. 1. 1487 + 43.9
N 58° 10' W

N 53° 45' W
P. 1. 1481 + 94.7

P. 1. 1477 + 52.4
N 56° 32' W

P. 1. 1474 + 51
N 53° 31' W

P. 1. 1472 + 49.9
N 70° 03' W

P. 1. 1470 + 27.9
N 70° 11' W

P. 1. 1478 + 50.2
N 67° 15' W

P. 1. 1467 + 50.2
N 67° 15' W

P. 1. 1459 + 43.4
N 83° 43' W

P. 1. 1451 + 19.0
N 83° 16' W

P. 1. 1445 + 08.5
N 88° 33' W

P. 1. 1441 + 86.8
N 89° 30' W

P. 1. 1439 + 90.9
N 89° 20' W

P. 1. 1422 + 08.8
N 89° 51' W

P. 1. 1437 + 74.8
N 56° 38' W

P. 1. 1435 + 26.4
N 58° 01' W

P. 1. 1425 + 47.6
N 58° 28' W

P. 1. 1418 + 24.0
N 58° 12' W

P. 1. 1409 + 85.7
N 58° 11' W

P. 1. 1403 + 00.3
N 57° 54' W

P. 1. 1400 + 79.8
N 58° 13' W

P. 1. 1399 + 08.5
N 58° 25' W

P. 1. 1392 + 68.9
N 58° 05' W

P. 1. 1383 + 22.8
N 64° 23' W

P. 1. 1375 + 4.0
N 64° 11' W

P. 1. 1373 + 13.9
N 57° 49' W

P. 1. 1368 + 61.0
N 57° 46' W

P. 1. 1364 + 1.0
N 58° 01' W

P. 1. 1346 + 42.7
N 78° 13' W

P. 1. 1406 + 20.9
N 86° 44' W

P. 1. 1404 + 95.7
N 86° 16' W

P. 1. 1397 + 31.0
N 76° 07' W

P. 1. 1394 + 61.0
N 82° 00' W

P. 1. 1390 + 28.4
N 55° 30' W

P. 1. 1387 + 34.0
N 64° 11' W

P. 1. 1377 + 57.4
N 42° 31' W

P. 1. 1376 + 11.5
N 76° 26' W

MILE - 75
(2)

92
90

82
89

1350