

GENERAL NOTES:

- 1) THIS SURVEY DOES NOT CONSTITUTE A SUBDIVISION AS DEFINED BY ALASKA STATUTE 40.15.900 (5) (A).
- 2) THE CENTERLINE OF THE RICHARDSON HWY SHOWN HEREON WAS DEFINED FROM THE RECOVERED CONTROLLING MONUMENTS AND SUPPLEMENTAL INFORMATION PROVIDED TO CRW BY DOT/PF AND IS FOR INFORMATIONAL PURPOSES ONLY.
- 3) THE MILE POSTS SHOWN HEREON ARE BASED ON THE ACTUAL LOCATION OF MILE POST 266, WHICH WAS APPROXIMATELY LOCATED IN THE FIELD THIS SURVEY.
- 4) THE SURVEY CONTROL AND RECOVERED MONUMENT VALUES SHOWN HEREON WERE ESTABLISHED WITH STATIC GPS METHODS.
- 5) THE HORIZONTAL CLOSURE FOR ALL SET PRIMARY CONTROL SHOWN THIS SURVEY MEETS OR EXCEEDS 1 PART IN 10,000. THE LARGEST NETWORK HORIZONTAL SEMI-MAJOR ERROR ELLIPSE OF 0.0037 METERS AT THE 95 % CONFIDENCE LEVEL WAS OBSERVED FOR THE STATIC GPS.
- 6) PRIMARY SURVEY CONTROL MONUMENTS SET THIS SURVEY ARE A 2-1/2" X 30" FLANGED ALUMINUM POST WITH A 3-1/4" MAGNETIZED ALUMINUM CAP.
- 7) SECONDARY SURVEY CONTROL MONUMENTS SET THIS SURVEY ARE 5/8" X 30" REBAR WITH A 2" ALUMINUM CAP.
- 8) RECTANGULAR SURVEY INFORMATION SHOWN HEREON IS BASED ON OFFICIAL BLM PROTRACTION DATA AND IS FOR INFORMATIONAL PURPOSES ONLY.
- 9) VERIFY HORIZONTAL AND VERTICAL CONTROL PRIOR TO USE.

HORIZONTAL CONTROL STATEMENT

COORDINATE SYSTEM:
 THIS PROJECT IS LOCATED ENTIRELY WITHIN "RICH-1", A LOW DISTORTION PROJECTION DEFINED BY THE ALASKA DEPARTMENT OF TRANSPORTATION AND PUBLIC FACILITIES.

"RICH-1" DEFINITION

LINEAR UNIT:	U.S. SURVEY FEET
DATUM:	NAD83 (2011)
PROJECTION:	OBLIQUE MERCATOR with RECTIFIED SKEW ORTHOMORPHIC
STANDARD PARALLEL AND GRID ORIGIN:	64°18'00.0"N
CENTRAL MERIDIAN:	145°43'00.0"W
FALSE NORTHING:	-13,700,000.0 SFT
FALSE EASTING:	25,100,000.0 SFT
PROJECT SKEW AXIS SCALE:	1.000047 (EXACT)
SKEW AXIS AZIMUTH:	-60° 00' 00"

BASIS OF COORDINATES:
 THE BASIS OF COORDINATES WAS COMPUTED BY UTILIZING THE NATIONAL OCEANIC AND ATMOSPHERIC ADMINISTRATION'S (NOAA) ONLINE POSITIONING USER SERVICE (OPUS).

TWO SET PRIMARY SURVEY CONTROL MONUMENTS WERE OBSERVED TWICE FOR A MINIMUM OF 6 HOURS. THESE VALUES WERE THEN AVERAGED AND HELD FIXED, FULLY CONSTRAINED IN THE CONTROL NETWORK.

POINT NO. 205	LATITUDE: 64°02'21.354115" N	POINT NO. 221	LATITUDE: 64°41'24.14623" N
LONGITUDE: 145°44'0.242325" W		LONGITUDE: 147°07'49.94287" W	

REF FRAME: NAD_83 (2011) EPOCH:2010.0000

BASIS OF BEARING:
 PROJECT BEARINGS ARE RICH-1 GRID BEARINGS.

VERTICAL CONTROL STATEMENT

DATUM:
 NAVD88 (USING GEOID12B)

BASIS OF VERTICAL CONTROL:
 THE ELEVATIONS HEREON WERE COMPUTED BY UTILIZING THE NATIONAL OCEANIC AND ATMOSPHERIC ADMINISTRATION'S (NOAA) ONLINE POSITIONING USER SERVICE (OPUS).

FOUR SET PRIMARY SURVEY CONTROL MONUMENTS WERE OBSERVED TWICE FOR A MINIMUM OF 6 HOURS. THESE VALUES WERE THEN AVERAGED AND HELD FIXED, FULLY CONSTRAINED IN THE CONTROL NETWORK.

POINT NO.	ORTHO HEIGHT (METERS)
205	355.209
209	279.869
213	248.233
217	196.539
221	162.675

DATE OF SURVEY	COMPLETED BY	PREPARED FOR
Beginning: 11/16/2015	CRW Engineering Group, LLC 3940 Arctic Blvd, Suite 300 Anchorage, Alaska 99503	Department of Transportation and Public Facilities (DOT&PF) 2301 Peger Road Fairbanks, Alaska 99709
Ending: 6/12/2016		

RECORD OF SURVEY

SURVEY CONTROL FOR:
RICHARDSON HWY MP 266-341 PASSING LANES
 within
 T. 10 S., R. 10 E. - T. 9 S., R. 10 E. - T. 8 S., R. 9 E. - T. 8 S., R. 8 E.
 T. 7 S., R. 8 E. - T. 7 S., R. 7 E. - T. 7 S., R. 6 E. - T. 7 S., R. 5 E. - T. 7 S., R. 4 E.
 T. 6 S., R. 4 E. - T. 5 S., R. 4 E. - T. 4 S., R. 4 E. - T. 4 S., R. 3 E. - T. 3 S., R. 3 E.
 FAIRBANKS MERIDIAN, ALASKA
 FAIRBANKS RECORDING DISTRICT

DRAWN BY:	SCALE:	CHECKED BY:	CRW FILE NO:
BJH	10/2/2017 1" = 15000'	MLJ & BWB	30110.02

THIS SURVEY LIES WITHIN THE FAIRBANKS MERIDIAN IN THE FOLLOWING SECTIONS:

- T. 10 S., R. 10 E., SECTIONS: 2, 3, 11, 14, 23
- T. 9 S., R. 10 E., SECTIONS: 6, 7, 8, 16, 17, 21, 22, 27, 34
- T. 8 S., R. 9 E., SECTIONS: 6, 7, 8, 16, 17, 21, 22, 25, 26, 27, 35, 36
- T. 8 S., R. 8 E., SECTIONS: 1, 3, 4
- T. 7 S., R. 8 E., SECTIONS: 30, 31, 32, 33, 34, 35, 36
- T. 7 S., R. 7 E., SECTIONS: 19, 20, 21, 22, 23, 25, 26, 27
- T. 7 S., R. 6 E., SECTIONS: 14, 15, 16, 17, 18, 23, 24
- T. 7 S., R. 5 E., SECTIONS: 4, 5, 6, 9, 10, 11, 13, 14
- T. 7 S., R. 4 E., SECTION: 1
- T. 6 S., R. 4 E., SECTIONS: 2, 10, 11, 14, 15, 23, 24, 25, 26, 36
- T. 5 S., R. 4 E., SECTIONS: 4, 9, 16, 21, 22, 26, 27, 35
- T. 4 S., R. 4 E., SECTIONS: 18, 19, 29, 30, 31, 32
- T. 4 S., R. 3 E., SECTIONS: 1, 12, 13
- T. 3 S., R. 3 E., SECTIONS: 3, 10, 11, 14, 23, 25, 26, 36

LEGEND

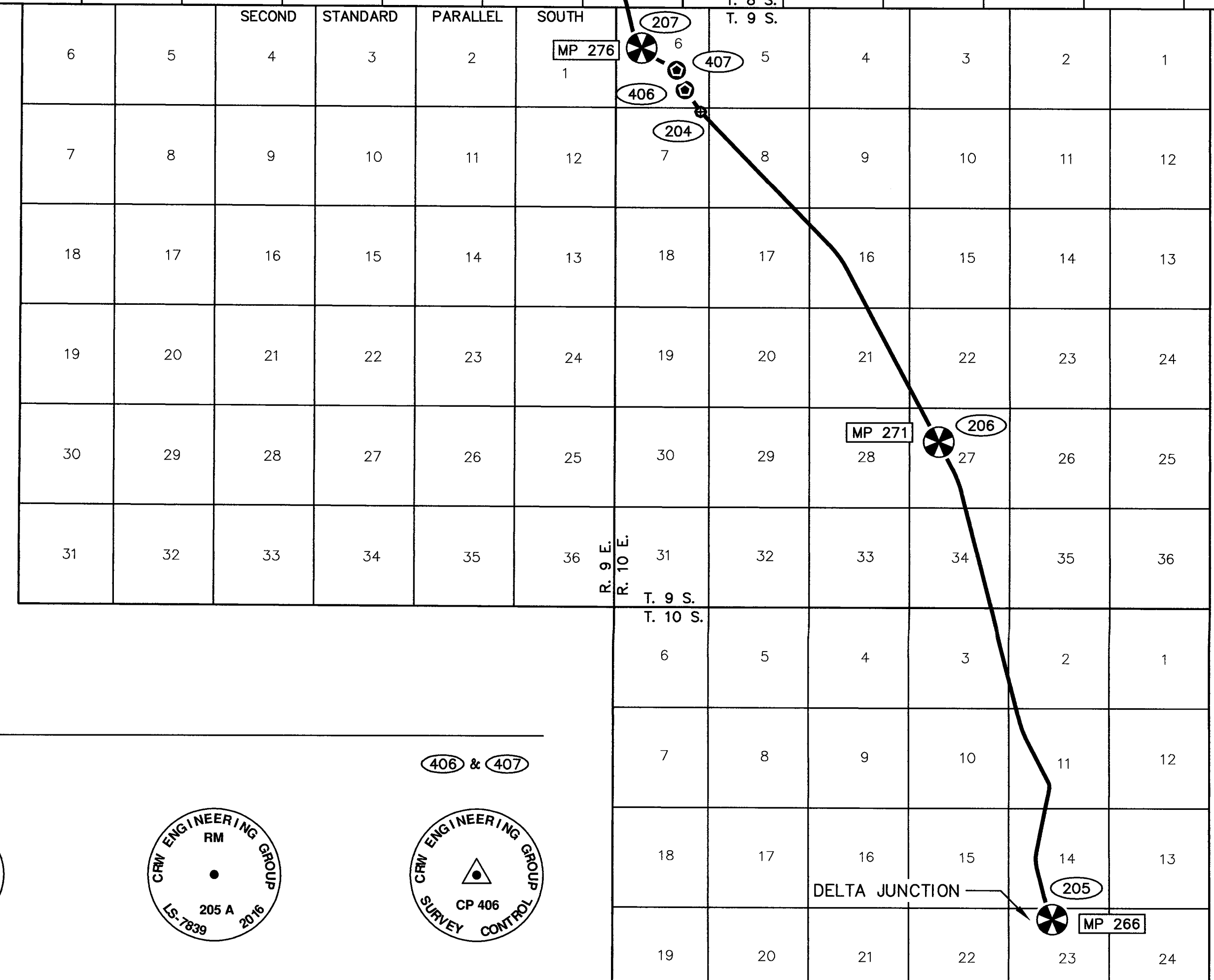
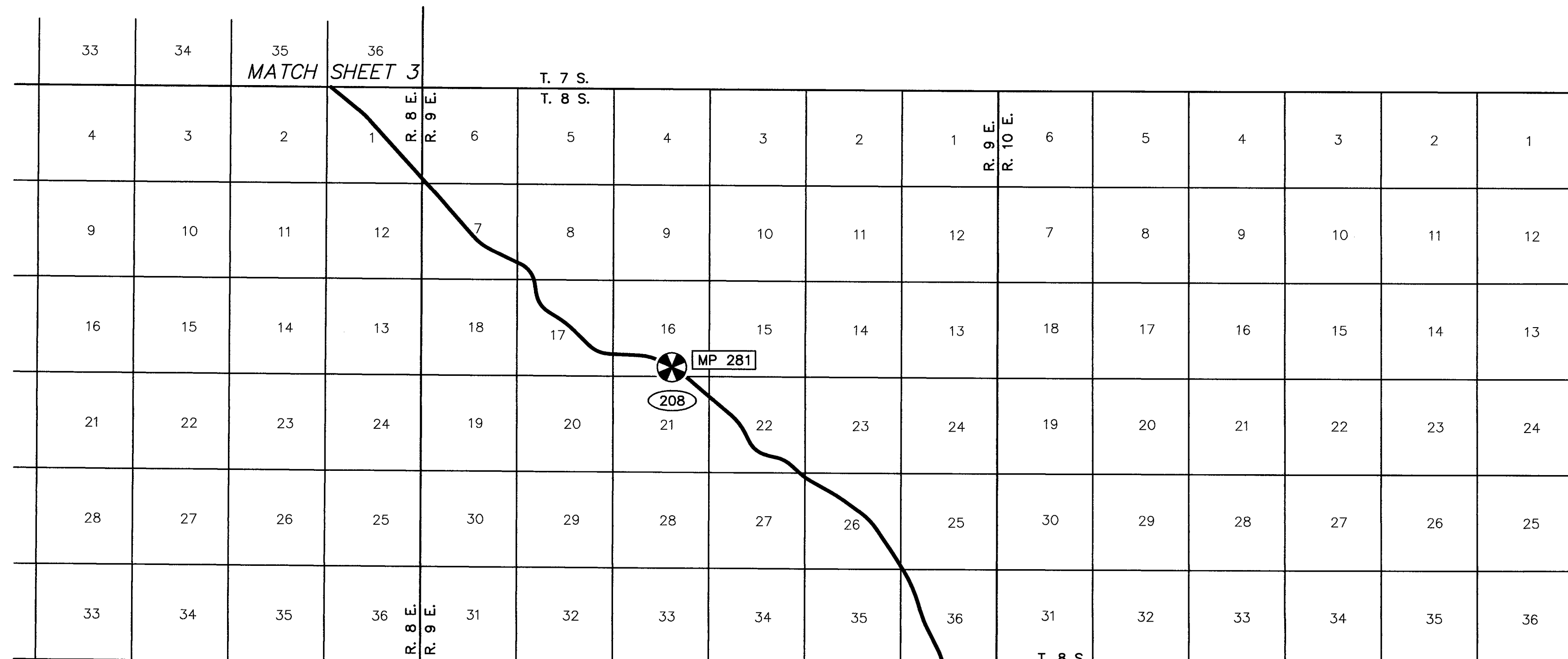
- SET PRIMARY MONUMENT
- POINT NUMBER IDENTIFIER
- APPROXIMATE MILE POST

I HEREBY CERTIFY THAT I AM PROPERLY REGISTERED AND LICENSED TO PRACTICE LAND SURVEYING IN THE STATE OF ALASKA, AND THAT THIS PLAT REPRESENTS A SURVEY MADE BY ME OR UNDER MY DIRECT SUPERVISION, AND THAT THE MONUMENTS SHOWN HEREON ACTUALLY EXIST AS DESCRIBED, AND THAT ALL DIMENSIONS AND OTHER DETAILS ARE CORRECT TO THE EXTENT SHOWN HEREON.

DATE: **11-27-2017** LS-7839
 REGISTRATION NUMBER

 MICHAEL L. JOKELA REGISTERED LAND SURVEYOR





SET PRIMARY SURVEY CONTROL				
No.	NORTHING	EASTING	ELEVATION	DESCRIPTION
205	197222.4643	861440.6558	1165.38	PRIMS 3.25IN ALUM-CAP CRW-GPS-CNTL
206	222429.5270	855399.6788	1085.15	PRIMS 3.25IN ALUM-CAP CRW-GPS-CNTL
207	243220.9902	839732.4413	1058.43	PRIMS 3.25IN ALUM-CAP CRW-GPS-CNTL
208	261756.1427	824046.4396	957.74	PRIMS 3.25IN ALUM-CAP CRW-GPS-CNTL

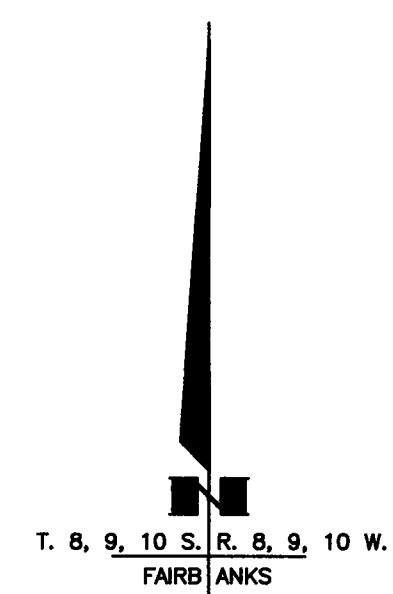
SET REFERENCE MONUMENTS				
PRIMARY CONTROL No.	RM No.	BEARING	DISTANCE	TYPE
205	205-A	N 76°39'53" E	10.00'	RBCS 2.0IN ALUM
	205-B	N 76°39'53" E	19.06'	COPPER TABLET
206	206-A	N 62°18'41" E	12.00'	RBCS 2.0IN ALUM
	206-B	N 62°18'41" E	24.00'	RBCS 2.0IN ALUM
207	207-A	S 41°09'04" W	11.00'	RBCS 2.0IN ALUM
	207-B	S 41°09'04" W	22.00'	RBCS 2.0IN ALUM
208	208-A	N 35°27'13" E	10.00'	RBCS 2.0IN ALUM
	208-B	N 35°27'13" E	20.00'	RBCS 2.0IN ALUM
209	209-A	N 36°02'33" E	11.00'	RBCS 2.0IN ALUM
	209-B	N 36°02'33" E	22.00'	RBCS 2.0IN ALUM

SET SECONDARY SURVEY CONTROL				
No.	NORTHING	EASTING	ELEVATION	DESCRIPTION
406	241013.8492	842018.1901	1015.84	RBCS 2.0IN ALUM CRW-CONTROL
407	242051.1345	841577.4567	1052.55	RBCS 2.0IN ALUM CRW-CONTROL

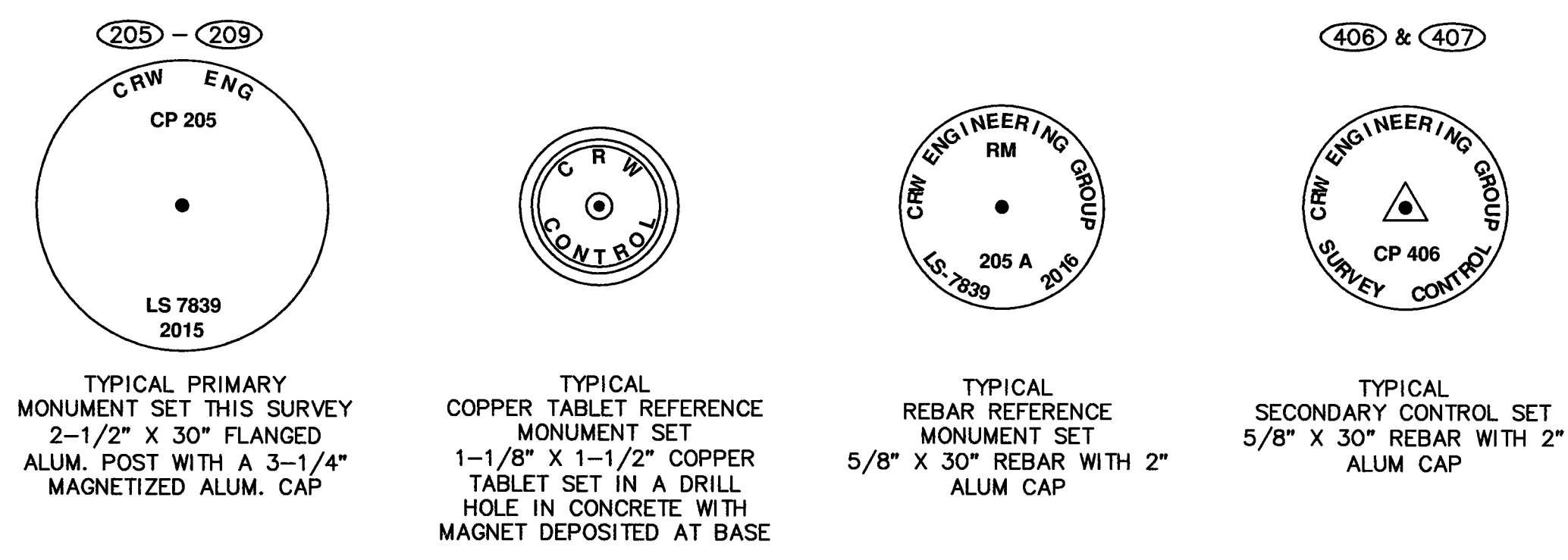
RECOVERED SECONDARY SURVEY CONTROL				
No.	NORTHING	EASTING	ELEVATION	DESCRIPTION
204	239856.6959	842840.3878	1001.37	RBARF 5/8IN 0.1FT AG

- LEGEND**
- SET PRIMARY MONUMENT (SEE TYPICAL THIS SHEET)
 - SET SECONDARY MONUMENT (SEE TYPICAL THIS SHEET)
 - RECOVERED SECONDARY MONUMENT (SEE TABLE THIS SHEET)
 - POINT NUMBER IDENTIFIER
 - APPROXIMATE MILE POST
 - ALUM ALUMINUM
 - PRIMS PRIMARY MONUMENT SET
 - RBCS REBAR WITH CAP SET
 - RBARF REBAR FOUND

NOTE:
SEE SHEET 6 FOR RECOVERED MONUMENT DETAILS WITHIN THIS SHEET.



MONUMENT DETAILS



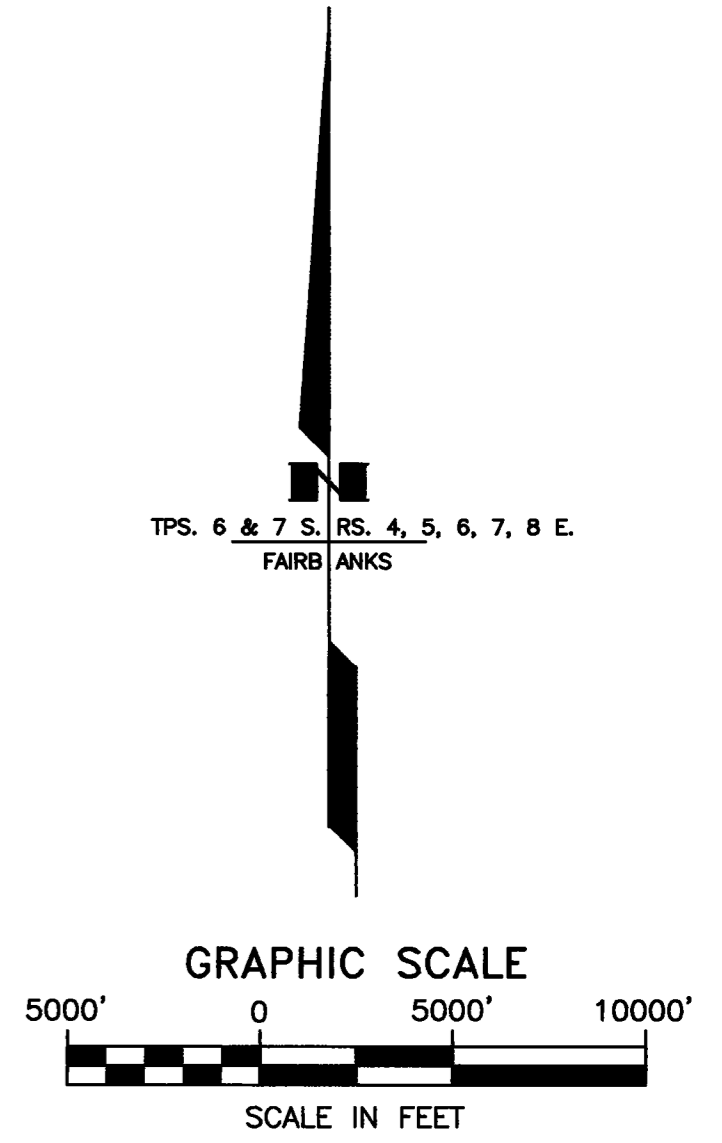
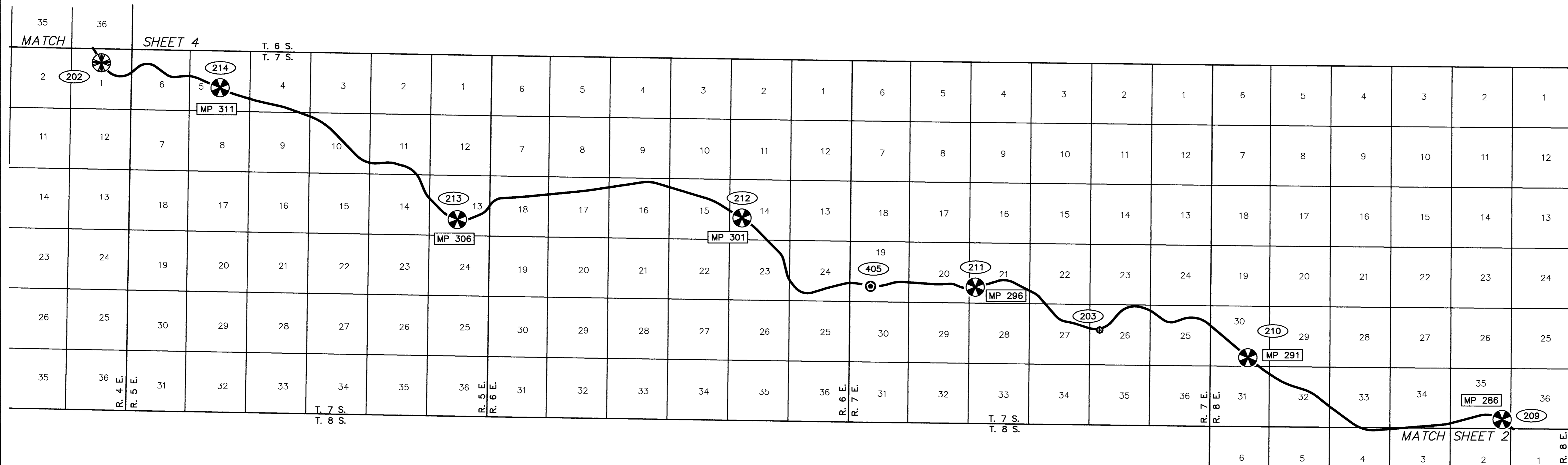
DATE OF SURVEY Beginning: 11/16/2015 Ending: 6/12/2016	COMPLETED BY CRW Engineering Group, LLC 3940 Arctic Blvd, Suite 300 Anchorage, Alaska 99503	PREPARED FOR Department of Transportation and Public Facilities (DOT&PF) 2301 Peger Road Fairbanks, Alaska 99709
--	--	--

RECORD OF SURVEY

SURVEY CONTROL FOR:
RICHARDSON HWY MP 266-341 PASSING LANES
within
T. 10 S., R. 10 E. - T. 9 S., R. 10 E. - T. 8 S., R. 9 E. - T. 8 S., R. 8 E.
T. 7 S., R. 8 E. - T. 7 S., R. 7 E. - T. 7 S., R. 6 E. - T. 7 S., R. 5 E. - T. 7 S., R. 4 E.
T. 6 S., R. 4 E. - T. 5 S., R. 4 E. - T. 4 S., R. 4 E. - T. 4 S., R. 3 E. - T. 3 S., R. 3 E.
FAIRBANKS MERIDIAN, ALASKA
FAIRBANKS RECORDING DISTRICT

DRAWN BY: BJH	SCALE: 1" = 15000'	CHECKED BY: MLJ & BWW	CRW FILE NO: 30110.02
------------------	-----------------------	--------------------------	--------------------------

Fairbanks 2017-96



SET PRIMARY SURVEY CONTROL				
No.	NORTHING	EASTING	ELEVATION	DESCRIPTION
209	278000.5678	804361.4896	918.20	PRIMS 3.25IN ALUM-CAP CRW-GPS-CNTL
210	283386.3548	782141.2326	1037.05	PRIMS 3.25IN ALUM-CAP CRW-GPS-CNTL
211	289514.9372	758319.9108	1012.69	PRIMS 3.25IN ALUM-CAP CRW-GPS-CNTL
212	295550.3554	737953.8193	1078.58	PRIMS 3.25IN ALUM-CAP CRW-GPS-CNTL
213	295379.1221	713074.0254	814.41	PRIMS 3.25IN ALUM-CAP CRW-GPS-CNTL
214	306921.7173	692339.9658	792.99	PRIMS 3.25IN ALUM-CAP CRW-GPS-CNTL

RECOVERED PRIMARY SURVEY CONTROL				
No.	NORTHING	EASTING	ELEVATION	DESCRIPTION
202	309107.4827	681959.3915	731.47	PRIMF BC 2.5IN-ON SS-ROD IN CASE

RECOVERED SECONDARY SURVEY CONTROL				
No.	NORTHING	EASTING	ELEVATION	DESCRIPTION
203	285788.0313	769191.6064	977.32	RBARF 5/8IN 0.3FT AG

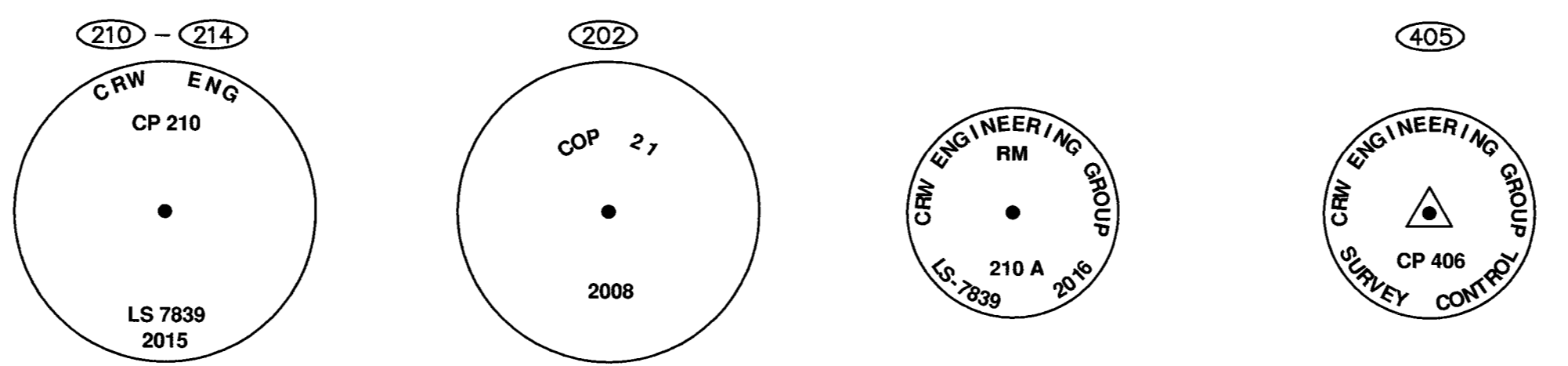
SET REFERENCE MONUMENTS				
PRIMARY CONTROL No.	RM No.	BEARING	DISTANCE	TYPE
209	209-A	N 36°02'33" E	11.00'	RBCS 2.0IN ALUM
	209-B	N 36°02'33" E	22.00'	RBCS 2.0IN ALUM
210	210-A	S 42°18'37" W	20.00'	RBCS 2.0IN ALUM
	210-B	S 42°18'37" W	40.00'	RBCS 2.0IN ALUM
211	211-A	S 73°37'00" E	15.00'	RBCS 2.0IN ALUM
	211-B	S 73°37'00" E	30.00'	RBCS 2.0IN ALUM
212	212-A	N 36°50'46" E	18.00'	RBCS 2.0IN ALUM
	212-B	N 36°50'46" E	36.00'	RBCS 2.0IN ALUM
213	213-A	N 05°31'04" E	20.00'	RBCS 2.0IN ALUM
	213-B	N 05°31'04" E	40.00'	RBCS 2.0IN ALUM
214	214-A	N 22°47'30" E	10.00'	RBCS 2.0IN ALUM
	214-B	N 22°47'30" E	20.00'	RBCS 2.0IN ALUM

SET SECONDARY SURVEY CONTROL				
No.	NORTHING	EASTING	ELEVATION	DESCRIPTION
405	289575.7111	749185.1942	845.54	RBCS 2.0IN ALUM CRW-CONTROL

- LEGEND**
- SET PRIMARY MONUMENT (SEE TYPICAL THIS SHEET)
 - RECOVERED PRIMARY MONUMENT (SEE DETAIL THIS SHEET)
 - SET SECONDARY MONUMENT (SEE DETAIL THIS SHEET)
 - RECOVERED SECONDARY MONUMENT (5/8" REBAR)
 - POINT NUMBER IDENTIFIER
 - APPROXIMATE MILE POST
 - ALUM ALUMINUM
 - PRIMS PRIMARY MONUMENT SET
 - PRIMF PRIMARY MONUMENT FOUND
 - RBCS REBAR WITH CAP SET
 - RBARF REBAR FOUND

NOTE:
SEE SHEET 7 FOR RECOVERED MONUMENT DETAILS WITHIN THIS SHEET.

MONUMENT DETAILS



TYPICAL PRIMARY MONUMENT SET THIS SURVEY 2-1/2" X 30" FLANGED ALUM. POST WITH A 3-1/4" MAGNETIZED ALUM CAP

RECOVERED 1/2" STAINLESS STEEL ROD WITH 2-1/2" BRASS CAP IN 6" VERTICAL PLASTIC PIPE COVERED WITH A 7" ALUMINUM LID STAMPED "COP 21" 0.5' BELOW GRADE

TYPICAL REBAR REFERENCE MONUMENT SET 5/8" X 30" REBAR WITH 2" ALUM. CAP

TYPICAL SECONDARY CONTROL SET 5/8" X 30" REBAR WITH 2" ALUM. CAP

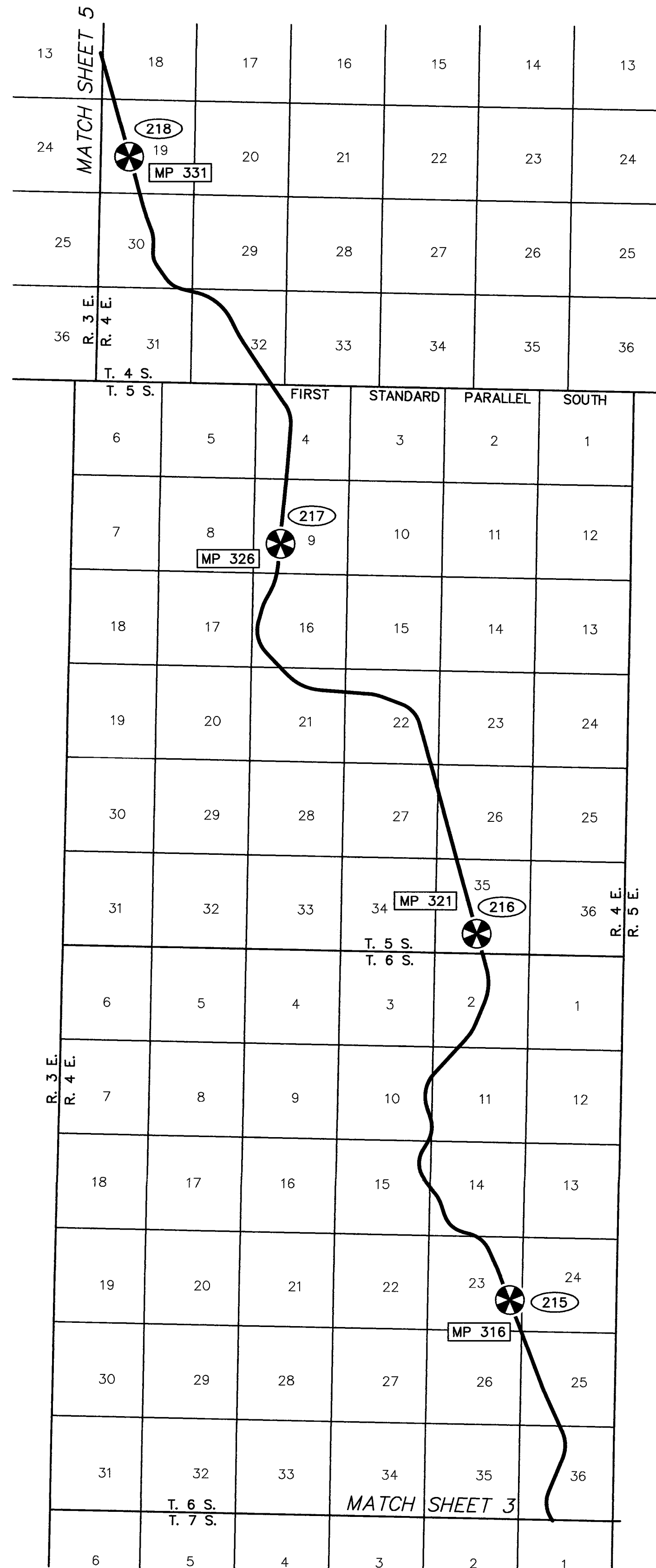


DATE OF SURVEY	COMPLETED BY	PREPARED FOR
Beginning: 11/16/2015	CRW Engineering Group, LLC 3940 Arctic Blvd, Suite 300 Anchorage, Alaska 99503	Department of Transportation and Public Facilities (DOT&PF) 2301 Peger Road Fairbanks, Alaska 99709
Ending: 6/12/2016		

RECORD OF SURVEY

SURVEY CONTROL FOR:
RICHARDSON HWY MP 266-341 PASSING LANES
within
T. 10 S., R. 10 E. - T. 9 S., R. 10 E. - T. 8 S., R. 9 E. - T. 8 S., R. 8 E.
T. 7 S., R. 8 E. - T. 7 S., R. 7 E. - T. 7 S., R. 6 E. - T. 7 S., R. 5 E. - T. 7 S., R. 4 E.
T. 6 S., R. 4 E. - T. 5 S., R. 4 E. - T. 4 S., R. 4 E. - T. 4 S., R. 3 E. - T. 3 S., R. 3 E.
FAIRBANKS MERIDIAN, ALASKA
FAIRBANKS RECORDING DISTRICT

DRAWN BY:	SCALE:	CHECKED BY:	CRW FILE NO.:
BJH	10/2/2017 1" = 15000'	MLJ & BWW	30110.02



SET PRIMARY SURVEY CONTROL				
No.	NORTHING	EASTING	ELEVATION	DESCRIPTION
215	322704.0390	678895.8150	728.87	PRIMS 3.25IN ALUM-CAP CRW-GPS-CNTL
216	343227.3898	676978.5420	714.08	PRIMS 3.25IN ALUM-CAP CRW-GPS-CNTL
217	365101.5104	666007.1856	644.82	PRIMS 3.25IN ALUM-CAP CRW-GPS-CNTL
218	386791.8731	657524.3913	600.94	PRIMS 3.25IN ALUM-CAP CRW-GPS-CNTL

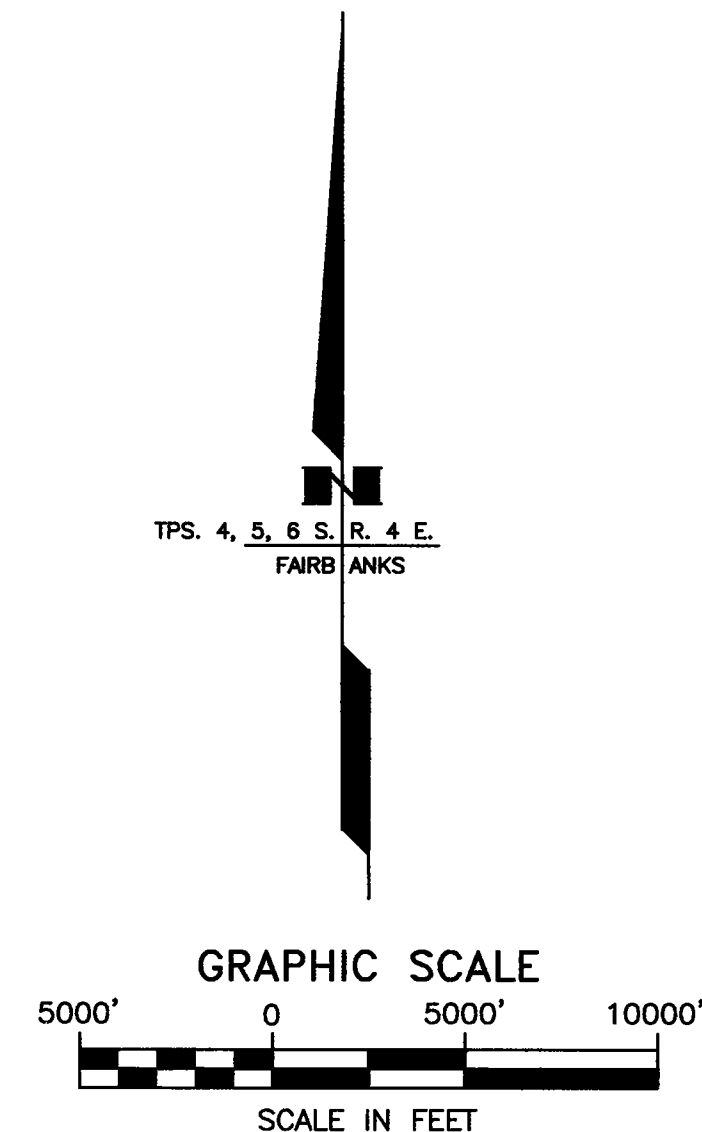
SET REFERENCE MONUMENTS				
PRIMARY CONTROL No.	RM No.	BEARING	DISTANCE	TYPE
215	215-A	N 67°02'29" E	16.00'	RBCS 2.0IN ALUM
	215-B	N 67°02'29" E	32.00'	RBCS 2.0IN ALUM
216	216-A	S 73°57'10" W	9.00'	RBCS 2.0IN ALUM
	216-B	S 73°57'10" W	18.00'	RBCS 2.0IN ALUM
217	217-A	S 84°48'34" E	10.00'	RBCS 2.0IN ALUM
	217-B	S 84°48'34" E	20.00'	RBCS 2.0IN ALUM
218	218-A	S 74°00'47" W	10.00'	RBCS 2.0IN ALUM
	218-B	S 74°00'47" W	20.00'	RBCS 2.0IN ALUM

LEGEND

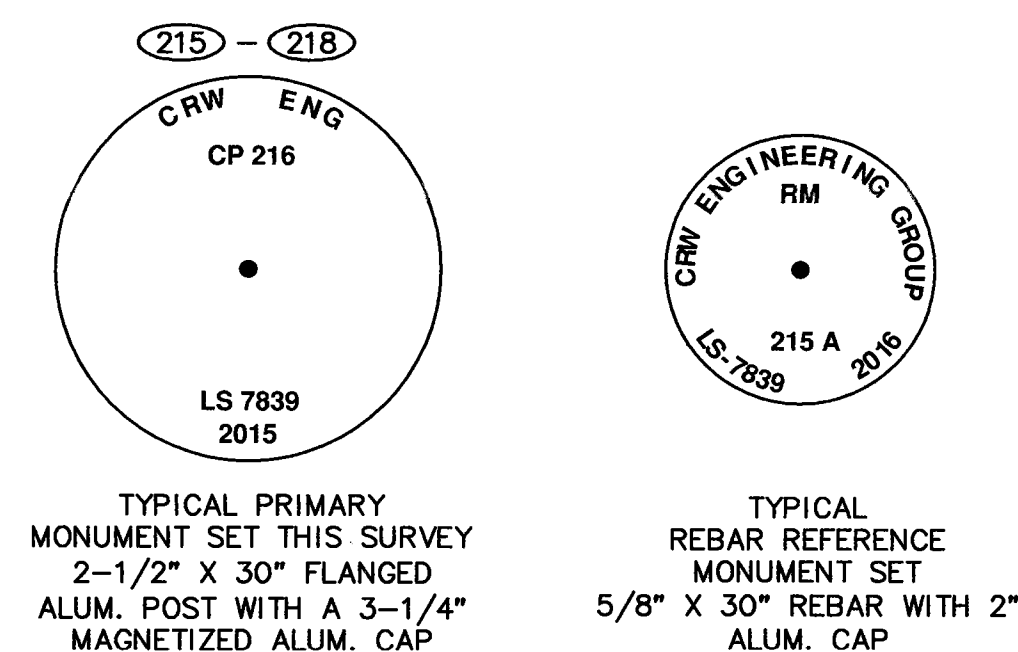
- SET PRIMARY MONUMENT (SEE TYPICAL THIS SHEET)
- POINT NUMBER IDENTIFIER
- APPROXIMATE MILE POST
- ALUM ALUMINUM
- PRIMS PRIMARY MONUMENT SET
- RBCS REBAR WITH CAP SET

NOTE:

SEE SHEET 8 FOR RECOVERED MONUMENT DETAILS WITHIN THIS SHEET.



MONUMENT DETAILS



DATE OF SURVEY Beginning: 11/16/2015 Ending: 6/12/2016	COMPLETED BY CRW Engineering Group, LLC 3940 Arctic Blvd, Suite 300 Anchorage, Alaska 99503	PREPARED FOR Department of Transportation and Public Facilities (DOT&PF) 2301 Peger Road Fairbanks, Alaska 99709
--	--	---

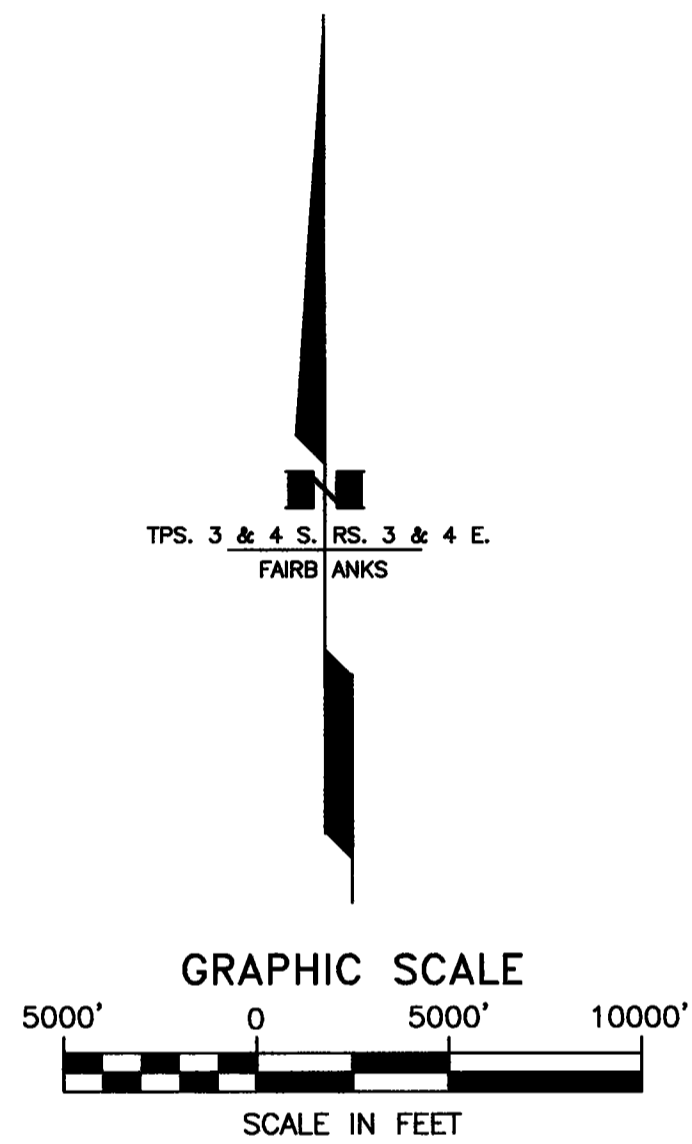
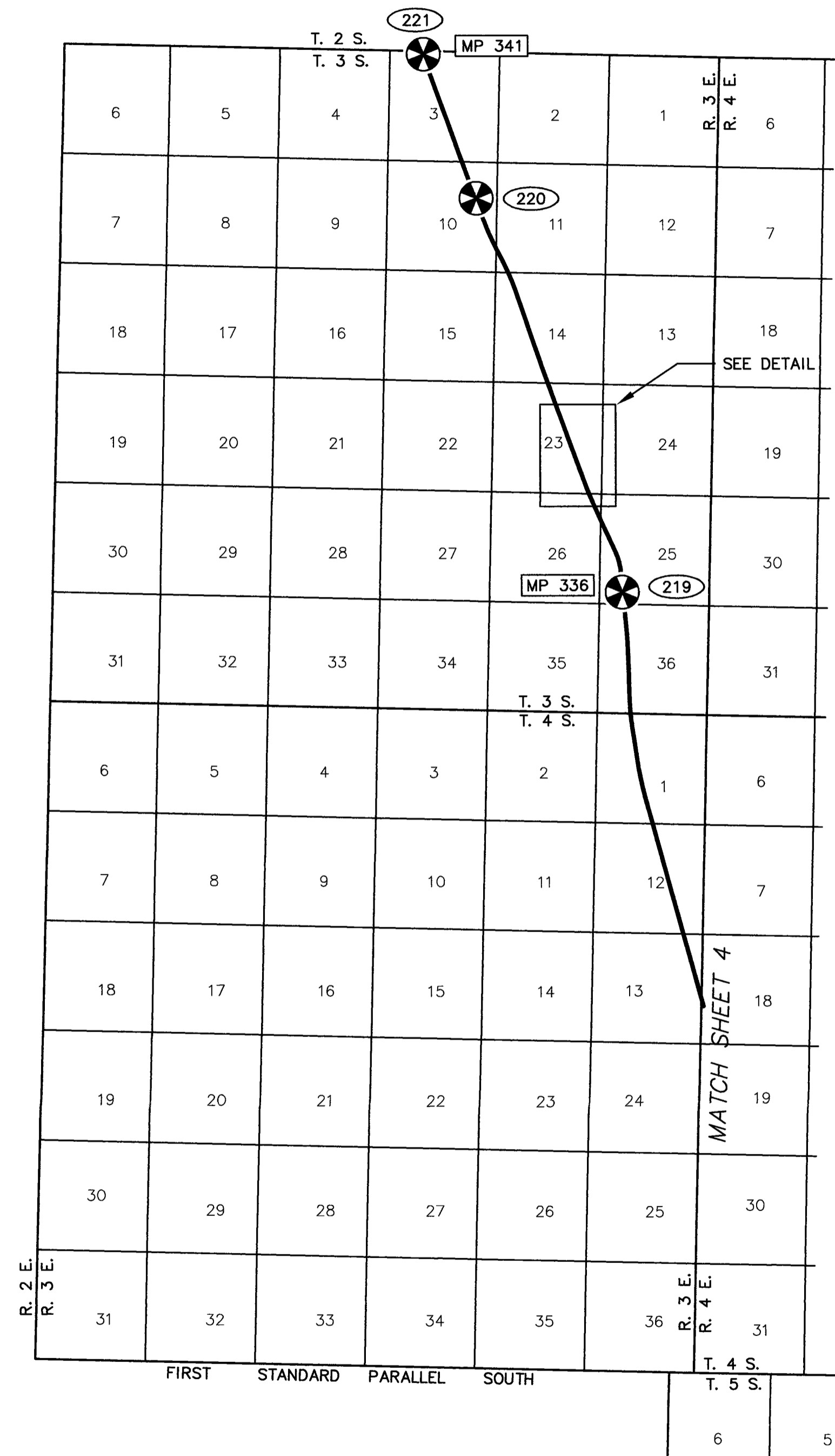
RECORD OF SURVEY

SURVEY CONTROL FOR:
RICHARDSON HWY MP 266-341 PASSING LANES
within
T. 10 S., R. 10 E. - T. 9 S., R. 10 E. - T. 8 S., R. 9 E. - T. 8 S., R. 8 E.
T. 7 S., R. 8 E. - T. 7 S., R. 7 E. - T. 7 S., R. 6 E. - T. 7 S., R. 5 E. - T. 7 S., R. 4 E.
T. 6 S., R. 4 E. - T. 5 S., R. 4 E. - T. 4 S., R. 4 E. - T. 4 S., R. 3 E. - T. 3 S., R. 3 E.
FAIRBANKS MERIDIAN, ALASKA
FAIRBANKS RECORDING DISTRICT

DRAWN BY: BJH 10/2/2017	SCALE: 1" = 15000'	CHECKED BY: MLJ & BWW	CRW FILE NO: 30110.02
----------------------------	-----------------------	--------------------------	--------------------------

Fairbanks 2017-96

SHEET 4 OF 9

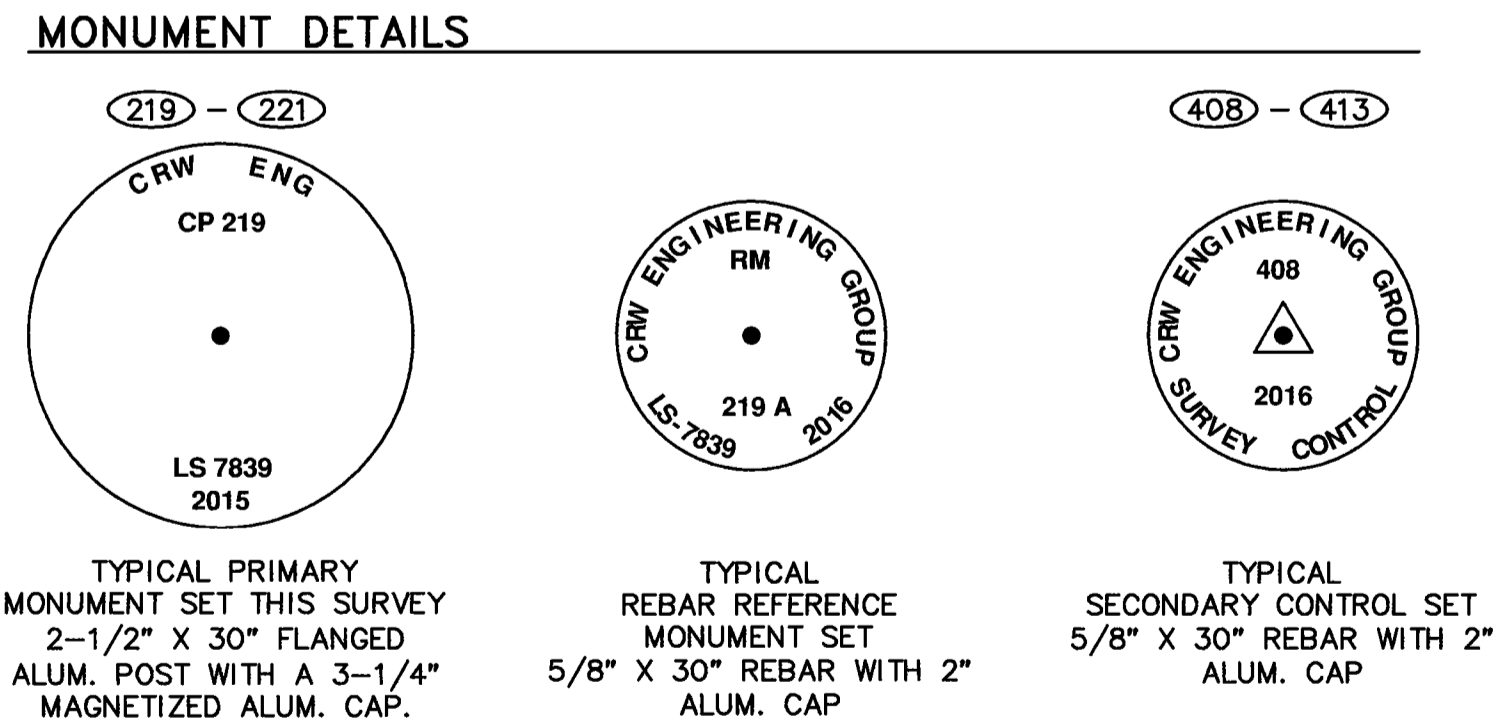


SET PRIMARY SURVEY CONTROL				
No.	NORTHING	EASTING	ELEVATION	DESCRIPTION
219	411828.8598	652276.1191	567.01	PRIMS 3.25IN ALUM-CAP CRW-GPS-CNTL
220	430788.1886	645296.2398	542.91	PRIMS 3.25IN ALUM-CAP CRW-GPS-CNTL
221	437722.7932	642764.5503	533.71	PRIMS 3.25IN ALUM-CAP CRW-GPS-CNTL

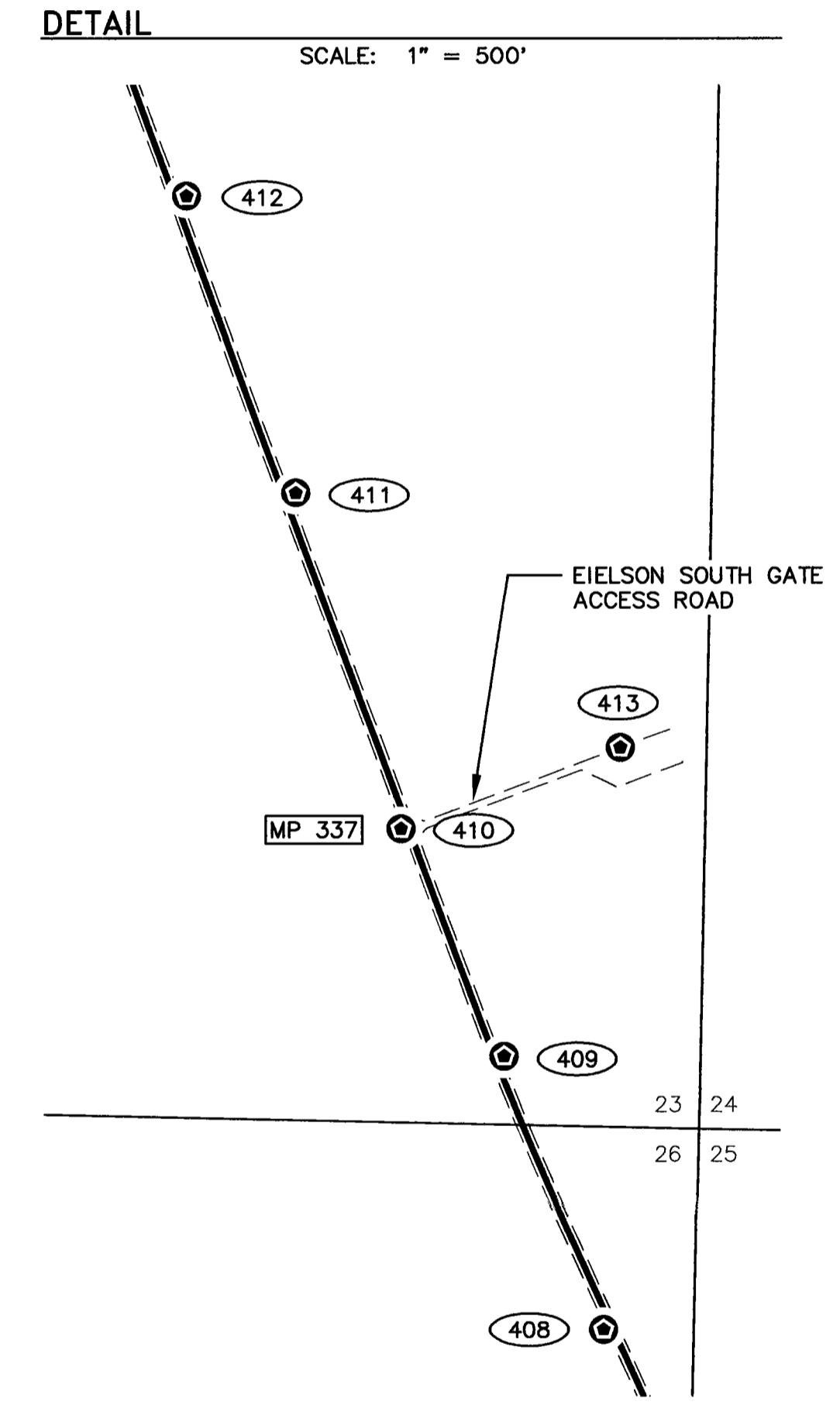
SET REFERENCE MONUMENTS				
PRIMARY CONTROL No.	RM No.	BEARING	DISTANCE	TYPE
219	219-A	S 84°44'25" W	12.00'	RBCS 2.0IN ALUM
	219-B	S 84°44'25" W	24.00'	RBCS 2.0IN ALUM
220	220-A	N 70°53'35" E	25.00'	RBCS 2.0IN ALUM
	220-B	N 70°53'35" E	50.00'	RBCS 2.0IN ALUM
221	221-A	N 70°21'02" E	15.00'	RBCS 2.0IN ALUM
	221-B	N 70°21'02" E	30.00'	RBCS 2.0IN ALUM

- LEGEND**
- SET PRIMARY MONUMENT (SEE TYPICAL THIS SHEET)
 - SET SECONDARY MONUMENT (SEE DETAIL THIS SHEET)
 - POINT NUMBER IDENTIFIER
 - APPROXIMATE MILE POST
 - ALUM ALUMINUM
 - PRIMS PRIMARY MONUMENT SET
 - RBCS REBAR WITH CAP SET

NOTE:
SEE SHEET 9 FOR RECOVERED MONUMENT DETAILS WITHIN THIS SHEET.



SET SECONDARY SURVEY CONTROL				
No.	NORTHING	EASTING	ELEVATION	DESCRIPTION
408	415884.5999	650963.1799	563.09	RBCS 2.0IN ALUM CRW-CONTROL
409	416801.5523	650625.9509	561.57	RBCS 2.0IN ALUM CRW-CONTROL
410	417565.6215	650280.8018	561.51	RBCS 2.0IN ALUM CRW-CONTROL
411	418694.8405	649929.9147	557.41	RBCS 2.0IN ALUM CRW-CONTROL
412	419692.8308	649565.5002	556.26	RBCS 2.0IN ALUM CRW-CONTROL
413	417838.1561	651016.8322	560.60	RBCS 2.0IN ALUM CRW-CONTROL



DATE OF SURVEY Beginning: 11/16/2015 Ending: 6/12/2016	COMPLETED BY CRW Engineering Group, LLC 3940 Arctic Blvd, Suite 300 Anchorage, Alaska 99503	PREPARED FOR Department of Transportation and Public Facilities (DOT&PF) 2301 Peger Road Fairbanks, Alaska 99709
RECORD OF SURVEY		
SURVEY CONTROL FOR: RICHARDSON HWY MP 266-341 PASSING LANES within T. 10 S., R. 10 E. - T. 9 S., R. 10 E. - T. 8 S., R. 9 E. - T. 8 S., R. 8 E. T. 7 S., R. 8 E. - T. 7 S., R. 7 E. - T. 7 S., R. 6 E. - T. 7 S., R. 5 E. - T. 7 S., R. 4 E. T. 6 S., R. 4 E. - T. 5 S., R. 4 E. - T. 4 S., R. 4 E. - T. 4 S., R. 3 E. - T. 3 S., R. 3 E. FAIRBANKS MERIDIAN, ALASKA FAIRBANKS RECORDING DISTRICT		
DRAWN BY: BJH 10/2/2017	SCALE: 1" = 15000'	CHECKED BY: MLJ & BWW
CRW FILE NO: 30110.02		

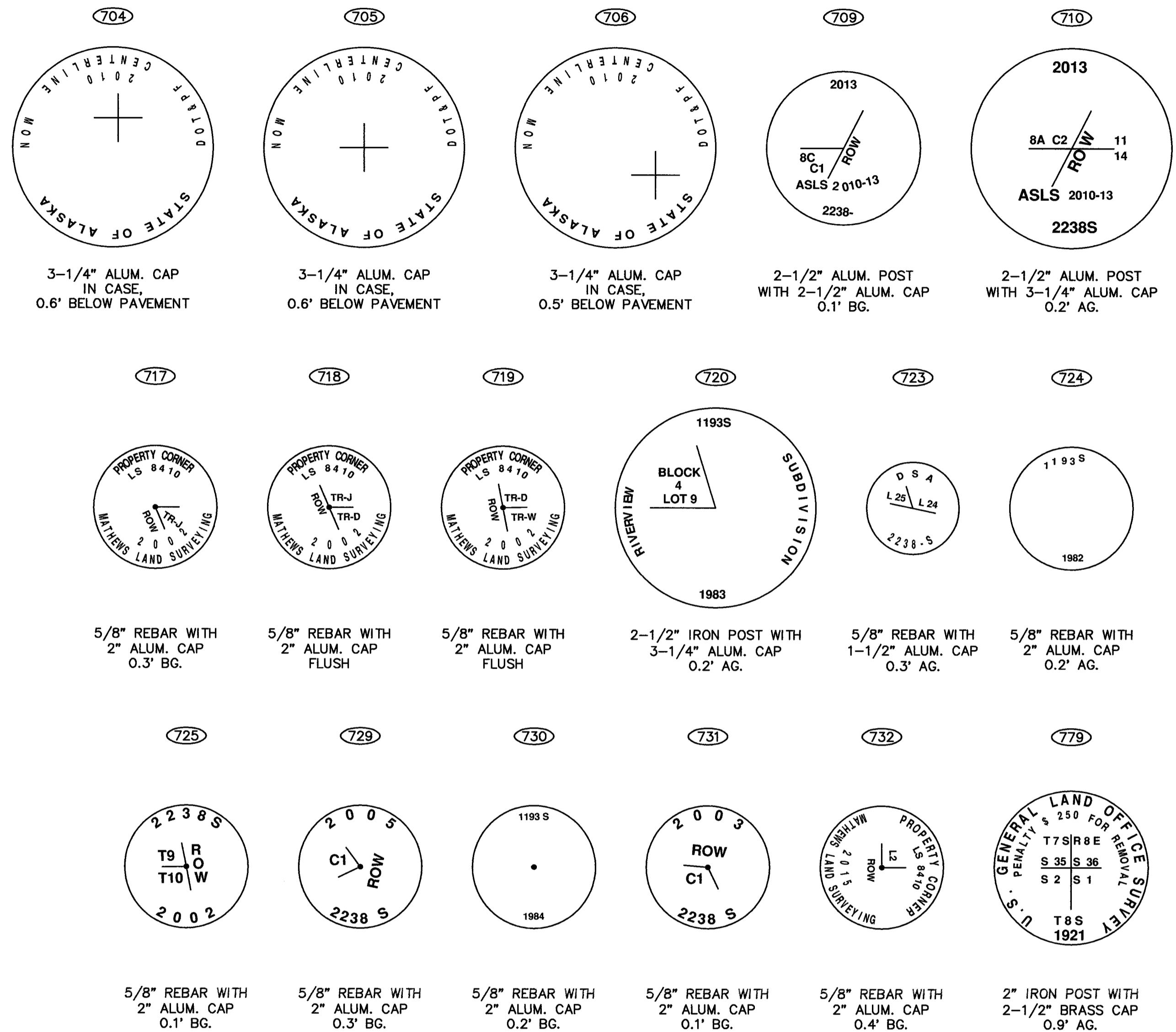
RECOVERED MONUMENTS - SHEET 2 - T. 10 S., R. 10 E.				
No.	NORTHING	EASTING	DESCRIPTION	SECTION
704	196847.5140	861487.8265	ROWCF 3.25 DOT-PF-CL MON PLUMB 2010	23
705	197746.2615	861206.5786	ROWCF 3.25 DOT-PF-CL MON PLUMB 2010	23
706	198378.0390	861028.1440	ROWCF 3.25 DOT-PF-CL MON PLUMB 2010	14
707	199982.6469	860779.6754	ROWCONC 6x6 PLUMB 0.7 AG	14
708	206730.8235	859913.7280	ROWCONC 6X6 PLUMB 0.3' AG	11
709	204531.7112	861043.6872	PRIMF 2.5IN ASLS-2010-13 LS2238 2013 0.1'BG	11
710	203209.9934	860946.4711	PRIMF 3.25IN ASLS-2010-13 LS2238 2013 0.2'AG	11
711	203056.4462	860916.2151	ROWCONC 6X6 PLUMB 1.0'AG	14
712	207628.7937	859890.5105	ROWCONC 6X6 PLUMB 0.9'AG	11
713	207553.6781	859600.4747	ROWCONC 6X6 PLUMB 0.8'AG	11
714	210315.6994	859197.2943	ROWCONC 6X6 PLUMB 0.8'AG	2
715	211208.8962	858657.2180	ROWCONC 6X6 PLUMB 0.6'AG	3
716	212099.2455	858427.2153	ROWCONC 6X6 PLUMB 1.2'AG	3

RECOVERED MONUMENTS - SHEET 2 - T. 9 S., R. 10 E.				
No.	NORTHING	EASTING	DESCRIPTION	SECTION
717	216417.1789	857516.2042	RBCF 2.0IN LS8410 0.3'BG	34
718	216248.4609	857559.6281	RBCF 2.0IN LS8410 FLUSH	34
719	216073.4607	857604.6263	RBCF 2.0IN LS8410 FLUSH	34
720	216416.7756	857309.7700	PRIMF 3.25IN LS1193 1983 0.2'AG	34
721	221713.6898	855577.4795	ROWCONC 6X6 PLUMB 1.2'AG	27
722	221066.5118	856257.9488	ROWCONC 6X6 PLUMB 1.0'AG	27
723	217409.5551	857365.8369	RBCF 1.5IN LS2238 Leaning 0.3'AG	34
724	224013.4317	854470.8266	RBCF 2.0IN LS1193 1982 0.2'AG	27
725	224286.7376	854326.9552	RBCF 2.0IN LS2238 2002 0.1BG	22
726	226977.4312	853030.8116	RBARF 0.5IN BENT-TIED-C.O.R.	21
727	223464.7585	854760.5530	RBARF 0.5IN 0.1BG	27
728	222361.1360	855467.6951	RBARF 0.5IN BENT-TIED-P.O.E.	27
729	231651.9216	850443.6579	RBCF 2.0IN LS2283 2005 0.3BG	16
730	232010.4087	850221.4628	RBCF 2.0IN LS1193 1984 0.2'BG	16
731	231951.3682	850261.4567	RBCF 2.0IN LS2283 2003 0.1'BG	16
732	234905.2819	847693.7535	RBCF 2.0IN LS8410 2015 0.4'BG	8
733	235632.6037	846991.7398	RBCF 2.0IN LS8410 2015 0.1' BG	8
734	238872.2774	843869.9290	ROWCONC 6X6	8
735	239697.9224	843213.0735	ROWCONC 6X6	8
736	241339.1978	842057.5292	ROWCONC 6X6	6
737	241712.1304	841925.0192	ROWCONC 6X6 PLUMB 1.0'AG	6
738	242944.3700	840341.1269	ROWCONC 6X6 PLUMB 0.8'AG	6

RECOVERED MONUMENTS - SHEET 2 - T. 8 S., R. 9 E.				
No.	NORTHING	EASTING	DESCRIPTION	SECTION
739	245499.6533	839103.1657	ROWCONC 6X6 PLUMB 0.8'AG	36
740	246382.4661	838779.7932	ROWCONC 6X6 1.0'AG	36
741	246246.8314	838512.5068	ROWCONC 6X6 PLUMB 0.8'AG	36
742	247427.7163	838249.7842	ROWCONC 6X6 PLUMB 1.0'AG	36
743	250525.7208	836648.9219	ROWCONC 6X6 PLUMB 1.0'AG	36
744	251159.5618	836609.6441	ROWCONC 6X6 PLUMB 1.2' AG	26
745	248760.7218	837760.6189	ROWCONC 6X6 1.0'AG	36
746	252757.5904	835193.5978	ROWCONC 6X6 1.0'AG	26
747	253945.6475	834445.7156	ROWCONC 6X6 0.8'AG	26
748	253701.6127	834272.0480	ROWCONC 6X6 PLUMB 0.6'AG	26
749	254564.9393	833571.6293	ROWCONC 6X6 1.2'AG	26
750	254814.2198	832613.8228	ROWCONC 6X6 PLUMB 0.7'AG	26
751	255659.8711	831708.5157	ROWCONC 6X6 1.4'AG	26
752	256456.1747	830746.4948	ROWCONC 6X6 PLUMB 0.8'AG	22
753	256944.8828	829833.8629	ROWCONC 6X6 0.9'AG	22
754	256785.9435	829213.8348	ROWCONC 6X6 0.8'AG	22
755	258182.6909	828223.4952	ROWCONC 6X6 PLUMB 0.5'AG	22
756	258049.0005	827955.0425	ROWCONC 6X6 PLUMB 0.5'AG	22
757	259265.5845	827379.7322	ROWCONC 6X6 1.0'AG	22
758	259037.0251	827185.6135	ROWCONC 6X6 0.9'AG	22
759	260866.0259	825042.5722	ROWCONC 6X6 PLUMB 0.9'AG	21
760	261432.8184	824247.7460	ROWCONC 6X6	16
761	262149.2190	823619.8409	ROWCONC 6X6	16
762	262262.2910	822221.2224	ROWCONC 6X6 PLUMB 0.9'AG	16
763	262561.4689	822235.3694	ROWCONC 6X6 FLUSH	16
764	263072.0643	819592.0454	ROWCONC 6X6	17
765	263614.8351	818622.3109	ROWCONC 6X6	17
766	264662.0019	817775.5273	ROWCONC 6X6	17
767	265829.6490	816748.5041	ROWCONC 6X6 PLUMB 0.7'AG	17
768	266380.6983	816665.7192	ROWCONC 6X6	17
769	266335.5320	816369.1271	ROWCONC 6X6 0.7'AG	17
770	267298.0129	815662.4382	ROWCONC 6X6 1.5'AG	8
771	267566.2878	815794.3452	ROWCONC 6X6 1.0'AG	8
772	268381.7799	814127.8400	ROWCONC 6X6 1.0'AG	7
773	268111.8636	813996.5126	ROWCONC 6X6 1.5'AG	7
774	269039.9393	813271.1065	ROWCONC 6X6 0.8'AG	7

RECOVERED MONUMENT - SHEET 2 - T. 8 S., R. 8 E.				
No.	NORTHING	EASTING	DESCRIPTION	SECTION
779	277312.0292	805068.0236	BLM 2.5IN BRASS CAP SEC COR 35-35-1-2 1921	1 & 2

RECOVERED MONUMENT DETAILS - SHEET 2



NOTES:

- 1) MONUMENTS REPORTED THIS SHEET NOT PLOTTED HEREON.
- 2) THE RECOVERED MONUMENTS REPORTED THIS SHEET ARE WITHIN:
 TOWNSHIP 10 SOUTH - RANGE 10 EAST
 TOWNSHIP 9 SOUTH - RANGE 10 EAST
 TOWNSHIP 8 SOUTH - RANGE 9 EAST FAIRBANKS MERIDIAN - ALASKA
 TOWNSHIP 8 SOUTH - RANGE 8 EAST

LEGEND

- ALUM. ALUMINUM
- AG. ABOVE GROUND LEVEL
- BG. BELOW GROUND LEVEL
- ROWCONC 6" X 6" CONCRETE RIGHT OF WAY MONUMENT
- ROWCF RIGHT OF WAY MONUMENT WITH CAP FOUND
- PRIMF PRIMARY MONUMENT FOUND
- BLM BUREAU OF LAND MANAGEMENT/GENERAL LAND OFFICE, OFFICIAL MONUMENT
- RBCF REBAR WITH CAP FOUND
- RBARF REBAR FOUND



DATE OF SURVEY Beginning: 11/16/2015 Ending: 6/12/2016	COMPLETED BY CRW Engineering Group, LLC 3940 Arctic Blvd, Suite 300 Anchorage, Alaska 99503	PREPARED FOR Department of Transportation and Public Facilities (DOT&PF) 2301 Peger Road Fairbanks, Alaska 99709
RECORD OF SURVEY		
SURVEY CONTROL FOR: RICHARDSON HWY MP 266-341 PASSING LANES within T. 10 S., R. 10 E. - T. 9 S., R. 10 E. - T. 8 S., R. 9 E. - T. 8 S., R. 8 E. T. 7 S., R. 8 E. - T. 7 S., R. 7 E. - T. 7 S., R. 6 E. - T. 7 S., R. 5 E. - T. 7 S., R. 4 E. T. 6 S., R. 4 E. - T. 5 S., R. 4 E. - T. 4 S., R. 4 E. - T. 4 S., R. 3 E. - T. 3 S., R. 3 E. FAIRBANKS MERIDIAN, ALASKA FAIRBANKS RECORDING DISTRICT		
DRAWN BY: BJH 10/2/2017	SCALE: 1" = 15000'	CHECKED BY: MLJ & BWB
CRW FILE NO: 30110.02		

Fairbanks 2017-96

RECOVERED MONUMENTS - SHEET 3 - T. 7 S., R. 8 E.				
No.	NORTHING	EASTING	DESCRIPTION	SECTION
775	278368.6171	803738.5248	RBCF 2.0IN LS1193 1979 1.0'AG	35
776	277558.7749	795821.8113	PRIMF 3.25IN LS9324 2011 0.1'AG	34
777	277368.7535	794500.8206	BLM 3.25IN BRASS CAP SEC COR 33-34-4-3 1949	33 & 34
778	277447.7894	794501.5218	PRIMF 3.25IN LS9324 2011	33 & 34

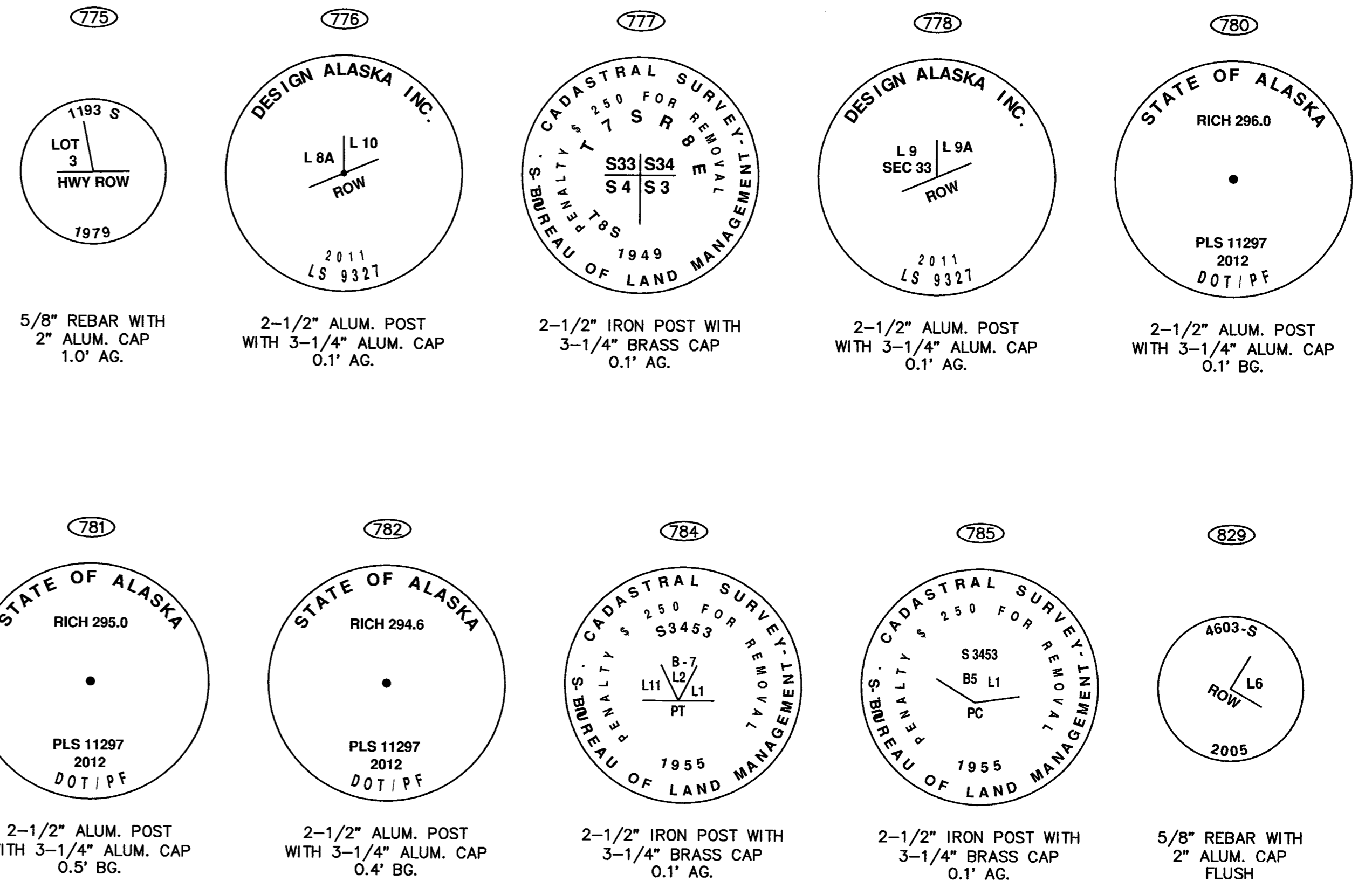
RECOVERED MONUMENTS - SHEET 3 - T. 7 S., R. 7 E.				
No.	NORTHING	EASTING	DESCRIPTION	SECTION
780	290027.2821	760264.2596	PRIMF 3.25IN LS11297 2012 BANNER-CRK SURVEY-CNTL	35
781	287870.2106	764641.4597	PRIMF 3.25IN LS11297 2012 BANNER-CRK SURVEY-CNTL	34
782	286951.7608	765379.4808	PRIMF 3.25IN LS11297 2012 BANNER-CRK SURVEY-CNTL	33 & 34

RECOVERED MONUMENTS - SHEET 3 - T. 7 S., R. 6 E.				
No.	NORTHING	EASTING	DESCRIPTION	SECTION
787	296625.4569	716119.9283	ROWCONC 6X6 PLUMB 0.4'AG	18
788	297420.7480	717001.3386	ROWCONC 6X6 1.2'AG	18
789	297120.8013	717020.5674	ROWCONC 6X6 PLUMB 0.9'AG	18
790	297212.7855	718493.2589	ROWCONC 6X6 PLUMB 0.8'AG	18
791	297238.1338	718491.7037	ROWCONC 6X6	18
792	297512.2072	718474.9564	ROWCONC 6X6 1.1'AG	18
793	297291.8400	719324.6847	ROWCONC 6X6 PLUMB 0.5'AG	18
794	298817.9159	729239.0747	ROWCONC 6X6 PLUMB 0.7'AG	16
795	298543.5858	729280.7205	ROWCONC 6X6 PLUMB 0.9'AG	16
796	298723.8543	730559.8190	ROWCONC 6X6 1.1'AG	16
797	297167.9291	734695.0127	ROWCONC 6X6 1.3'AG	15
798	296534.5398	736077.5349	ROWCONC 6X6 PLUMB 0.5'AG	15
799	296787.6135	736237.7697	ROWCONC 6X6 PLUMB 0.5'AG	15
800	296817.2034	736256.4148	ROWCONC 6X6 PLUMB 1.0'AG	15
801	288881.5957	744158.9803	ROWCONC 6X6 PLUMB	24
802	289603.7109	742680.8515	ROWCONC 6X6 1.2'AG	24
803	289922.4162	742052.1041	ROWCONC 6X6 PLUMB 1.3'AG	23
804	295447.6527	738349.8114	ROWCONC 6X6 PLUMB 1.0'AG	14
805	295193.6625	738188.6602	ROWCONC 6X6 PLUMB 0.5'AG	14
806	294600.1626	739396.0445	ROWCONC 6X6 PLUMB 1.0'AG	14
807	294390.2478	739181.6487	ROWCONC 6X6 PLUMB 0.8'AG	14

RECOVERED MONUMENTS - SHEET 3 - T. 7 S., R. 5 E.				
No.	NORTHING	EASTING	DESCRIPTION	SECTION
783	295312.9237	712780.9323	ROWCONC 6X6 1.2'AG	13
784	296059.4514	715156.3130	BLM 3.25IN USS3453 PLUMB 1955	13
785	296420.3852	715612.9974	BLM 3.25IN USS3453 PLUMB 1955	13
786	296254.7642	715863.0438	ROWCONC 6X6 PLUMB 1.0'AG	13
808	295680.5959	712157.0208	ROWCONC 6X6 PLUMB 1.0'AG	13
809	297203.1788	710556.3096	ROWCONC 6X6 PLUMB 0.9'AG	14
810	297989.4470	710070.8207	ROWCONC 6X6 PLUMB 1.0'AG	14
811	297985.3736	710284.3722	ROWCONC 6X6 EL-AT-GND	14
812	297984.7397	710338.8822	ROWCONC 6X6 PLUMB 0.3'AG	14
813	300246.3541	708390.0448	ROWCONC 6X6 PLUMB 0.5'AG	11
814	300146.7702	707633.0626	ROWCONC 6X6 PLUMB 0.7'AG	11
815	301107.7375	704377.4979	ROWCONC 6X6 PLUMB 0.9'AG	10
816	302972.6742	702143.4531	ROWCONC 6X6 PLUMB 0.8'AG	10
817	304326.4566	700042.0509	ROWCONC 6X6 PLUMB 1.3'AG	9
818	304608.8246	700144.3800	ROWCONC 6X6 PLUMB 1.0'AG	9
819	304970.6121	698261.4804	ROWCONC 6X6 PLUMB 0.9'AG	4
820	305460.9281	697647.2354	ROWCONC 6X6 PLUMB 1.0'AG	4
821	305168.5601	697582.0671	ROWCONC 6X6 1.0'AG	4
822	305831.1626	695993.5620	ROWCONC 6X6 PLUMB 1.2'AG	4
823	305538.3411	695927.9669	ROWCONC 6X6 PLUMB 1.0'AG	4
824	306027.0480	695239.4261	ROWCONC 6X6 PLUMB 1.1'AG	4
825	305739.4130	695154.0844	ROWCONC 6X6 PLUMB 1.0'AG	4
826	306164.9367	693722.0102	ROWCONC 6X6 0.9'AG	5
827	306405.1454	693793.6163	ROWCONC 6X6	5
828	306453.1381	693807.7580	ROWCONC 6X6	5
829	306665.8348	693088.9975	RBCF 2.000 4603 Good ROW FLUSH	5
830	306437.9452	692986.4961	ROWCONC 6X6 PLUMB 1.2'AG	5
831	307873.3011	690525.6419	ROWCONC 6X6 PLUMB 1.0'AG	5
832	307599.7239	690402.7198	ROWCONC 6X6 PLUMB 1.2'AG	5
833	308091.1645	689102.2804	ROWCONC 6X6 PLUMB 1.0'AG	6
834	308202.9455	687743.4205	ROWCONC 6X6 PLUMB 0.3'AG	6
835	308888.4367	686814.4486	ROWCONC 6X6 PLUMB 0.3'AG	6
836	308844.3446	685064.7067	ROWCONC 6X6 PLUMB 0.3'AG	6

RECOVERED MONUMENTS - SHEET 3 - T. 7 S., R. 4 E.				
No.	NORTHING	EASTING	DESCRIPTION	SECTION
837	308386.6570	684510.2477	ROWCONC 6X6 PLUMB 0.6'AG	1
838	308716.6799	682468.8495	ROWCONC 6X6 PLUMB 0.7'AG	1

RECOVERED MONUMENT DETAILS - SHEET 3



LEGEND

ALUM.	ALUMINUM
AG.	ABOVE GROUND LEVEL
BG.	BELOW GROUND LEVEL
ROWCONC	6" X 6" CONCRETE RIGHT OF WAY MONUMENT
PRIMF	PRIMARY MONUMENT FOUND
BLM	BUREAU OF LAND MANAGEMENT/GENERAL LAND OFFICE, OFFICIAL MONUMENT
RBCF	REBAR WITH CAP FOUND

NOTES:

- MONUMENTS REPORTED THIS SHEET NOT PLOTTED HEREON.
- THE RECOVERED MONUMENTS REPORTED THIS SHEET ARE WITHIN:
TOWNSHIP 7 SOUTH - RANGE 8 EAST
TOWNSHIP 7 SOUTH - RANGE 7 EAST
TOWNSHIP 7 SOUTH - RANGE 6 EAST
TOWNSHIP 7 SOUTH - RANGE 5 EAST
TOWNSHIP 7 SOUTH - RANGE 4 EAST
FAIRBANKS MERIDIAN - ALASKA



DATE OF SURVEY Beginning: 11/16/2015 Ending: 6/12/2016	COMPLETED BY CRW Engineering Group, LLC 3940 Arctic Blvd, Suite 300 Anchorage, Alaska 99503	PREPARED FOR Department of Transportation and Public Facilities (DOT&PF) 2301 Peger Road Fairbanks, Alaska 99709
RECORD OF SURVEY		
SURVEY CONTROL FOR: RICHARDSON HWY MP 266-341 PASSING LANES within T. 10 S., R. 10 E. - T. 9 S., R. 10 E. - T. 8 S., R. 9 E. - T. 8 S., R. 8 E. T. 7 S., R. 8 E. - T. 7 S., R. 7 E. - T. 7 S., R. 6 E. - T. 7 S., R. 5 E. - T. 7 S., R. 4 E. T. 6 S., R. 4 E. - T. 5 S., R. 4 E. - T. 4 S., R. 4 E. - T. 4 S., R. 3 E. - T. 3 S., R. 3 E. FAIRBANKS MERIDIAN, ALASKA FAIRBANKS RECORDING DISTRICT		
DRAWN BY: BJH 10/2/2017	SCALE: 1" = 15000'	CHECKED BY: MLJ & BWW
CRW FILE NO: 30110.02		

RECOVERED MONUMENTS - SHEET 4 - T. 6 S., R. 4 E.

No.	NORTHING	EASTING	DESCRIPTION	SECTION
839	310573.0298	681300.3221	ROWCONC 6X6 PLUMB 1.2'AG	36
840	313746.6311	681989.4684	ROWCONC 6X6 PLUMB 1.0'AG	36
841	313861.9745	681712.7221	ROWCONC 6X6 PLUMB 1.1'AG	36
842	315385.6082	681965.1640	ROWCONC 6X6	36
843	317362.2900	681071.2952	ROWCONC 6X6 PLUMB 1.0'AG	25
844	321152.3326	679614.1975	ROWCONC 6X6	24
845	319176.3801	680040.7409	ROWCONC 6X6 PLUMB 0.7'AG	25
846	320205.0112	679651.6956	ROWCONC 6X6 PLUMB 1.6'AG	25
847	322181.6038	679224.9575	ROWCONC 6X6 PLUMB 1.4'AG	23
848	323121.6744	678869.6660	ROWCONC 6X6 PLUMB 0.8'AG	23
849	323015.5426	678589.1851	ROWCONC 6X6 PLUMB 0.8'AG	23
850	324070.6575	678510.9145	ROWCONC 6X6 PLUMB 0.7'AG	23
851	326670.6827	676274.8021	ROWCONC 6X6	14
852	327515.1951	675379.4892	ROWCONC 6X6 1.2'AG	14
853	328012.1210	675218.4731	ROWCONC 6X6 0.3'AG	14
854	328562.6261	674594.6843	ROWCONC 6X6 1.9'AG	14
855	328744.9523	674832.8047	ROWCONC 6X6 PLUMB 0.7'AG	14
856	329567.6619	674199.4847	ROWCONC 6X6 PLUMB 0.8'AG	15
857	331167.2549	673863.3201	ROWCONC 6X6 1.0'AG	15
858	331454.9145	674387.2595	ROWCONC 6X6 0.3'AG	15
859	331609.4698	674129.9804	ROWCONC 6X6 PLUMB 0.5'AG	15
860	332854.1855	674267.3021	ROWCONC 6X6 PLUMB 0.6'AG	10
861	335487.4168	674505.8918	ROWCONC 6X6 PLUMB 0.8'AG	10
862	335284.7398	674726.6600	ROWCONC 6X6 PLUMB 1.4'AG	11
864	339323.0122	677556.2503	ROWCONC 6X6 PLUMB 0.7'AG	2
865	341190.0363	677391.8416	ROWCONC 6X6 PLUMB 1.4'AG	2
866	341269.2602	677681.1687	ROWCONC 6X6 PLUMB 0.7'AG	2

RECOVERED MONUMENTS - SHEET 4 - T. 5 S., R. 4 E.

No.	NORTHING	EASTING	DESCRIPTION	SECTION
702	371653.2689	666728.7548	ROWCONC 6X6 PLUMB	4
867	343749.8731	676694.8544	ROWCONC 6X6	35
868	344734.5848	676426.4593	ROWCONC 6X6 PLUMB 1.1'AG	35
869	345699.2067	676163.1798	ROWCONC 6X6 PLUMB 0.8'AG	35
870	346663.9836	675900.0397	ROWCONC 6X6 PLUMB 1.4'AG	35
871	347623.0769	675638.1800	ROWCONC 6X6 PLUMB 0.8'AG	26
872	342129.6410	677134.6163	ROWCONC 6X6	35
873	348595.0595	675374.1149	ROWCONC 6X6	26
874	349638.5268	675401.5548	ROWCONC 6X6 1.2'AG	26
875	349561.0511	675111.9999	ROWCONC 6X6 PLUMB 1.0'AG	26
876	350604.2469	675139.2485	ROWCONC 6X6 PLUMB 0.6'AG	26
877	354041.9582	673894.0314	PRIMF 3.25IN LS705 1981 TIED-POE	22
878	354978.4959	673641.1241	PRIMF 3.25IN LS705 1981 PLUMB 0.2'AG	22
879	355989.1872	672726.9772	ROWCONC 6X6	22
880	356668.0364	671756.7780	ROWCONC 6X6 PLUMB 0.6'AG	22
881	356996.7012	669012.1543	ROWCONC 6X6 PLUMB 0.7'AG	21
882	356697.0910	668996.3542	ROWCONC 6X6 PLUMB 1.0'AG	21
883	357056.1848	668235.8656	ROWCONC 6X6 PLUMB 0.4'AG	21
884	358915.0222	665081.7265	ROWCONC 6X6 1.6'AG	16
885	360699.0648	664904.6131	ROWCONC 6X6 PLUMB 0.8'AG	16
886	363853.4665	666009.1441	ROWCONC 6X6 PLUMB 0.2'AG	9
887	359122.4797	665298.5700	ROWCONC 6X6 PLUMB 0.4'AG	16
888	369904.6841	666276.3921	ROWCONC 6X6 PLUMB 0.1'AG	4
889	366793.7618	665993.6955	RBCF 2.0IN LS8204 PLUMB 2011 03'AG	9
890	365887.6320	665907.4610	RBCF 2.0IN LS8204 PLUMB 2011 FLUSH	9
891	369200.1863	666215.0205	RBCF 2.0IN LS4603 1987 TIED-POE	4
892	372810.4776	666139.3753	ROWCONC 6X6 PLUMB 0.7'AG	4

RECOVERED MONUMENTS - SHEET 4 - T. 4 S., R. 4 E.

No.	NORTHING	EASTING	DESCRIPTION	SECTION
701	387370.0891	657239.6044	PRIMF 3.25 LS4490 S19-CW1/16 T4S R4	19
893	374575.7613	664956.8130	ROWCONC 6X6 PLUMB 0.8'AG	32
894	376815.9389	663828.0411	ROWCONC 6X6 PLUMB 1.0'AG	32
895	379017.1572	661315.2671	ROWCONC 6X6	32
896	379308.3924	661387.4657	ROWCONC 6X6 PLUMB 0.7'AG	32
916	391699.9819	656201.5940	ROWCF 2.5IN BRASS DEPT-HWY PLUMB	18
917	390013.7837	656669.0144	ROWCF 2.5IN BRASS DEPT-HWY PLUMB	19
918	389097.9384	656921.6135	ROWCF 2.5IN BRASS DEPT-HWY PLUMB	19
919	386206.3189	657719.4572	ROWCF 2.5IN BRASS DEPT-HWY PLUMB	19
920	385354.5034	657954.4328	ROWCF 2.5IN BRASS DEPT-HWY PLUMB	19
921	379897.2688	659451.6482	ROWCONC 6X6 PLUMB	30
922	380645.2830	658944.5509	ROWCONC 6X6	30
923	384442.1086	658029.8019	PRIMF 3.25IN ALUM LS6484 2012 PLUMB	30

LEGEND

ALUM.	ALUMINUM
AG.	ABOVE GROUND LEVEL
BG.	BELOW GROUND LEVEL
ROWCONC	6" X 6" CONCRETE RIGHT OF WAY MONUMENT
ROWCF	RIGHT OF WAY MONUMENT WITH CAP FOUND
PRIMF	PRIMARY MONUMENT FOUND
RBCF	REBAR WITH CAP FOUND

NOTES:

- MONUMENTS REPORTED THIS SHEET NOT PLOTTED HEREON.
- THE RECOVERED MONUMENTS REPORTED THIS SHEET ARE WITHIN:
TOWNSHIP 6 SOUTH - RANGE 4 EAST
TOWNSHIP 5 SOUTH - RANGE 4 EAST FAIRBANKS MERIDIAN - ALASKA
TOWNSHIP 4 SOUTH - RANGE 4 EAST

RECOVERED MONUMENT DETAILS - SHEET 4

701: 2-1/2" ALUM. POST WITH 3-1/4" ALUM. CAP 0.3" AG.

877: 2-1/2" ALUM. POST WITH 3-1/4" ALUM. CAP 0.8" AG.

878: 2-1/2" ALUM. POST WITH 3-1/4" ALUM. CAP 0.3" AG.

889: 5/8" REBAR WITH 2" ALUM. CAP 0.3" AG.

890: 5/8" REBAR WITH 2" ALUM. CAP FLUSH

891: 5/8" REBAR WITH 2" ALUM. CAP 0.9" AG.

916: 2-1/2" BRASS CAP, IN CASE 0.6' BELOW PAVEMENT

917: 2-1/2" BRASS CAP, IN CASE 0.6' BELOW PAVEMENT

918: 2-1/2" BRASS CAP, IN CASE 0.6' BELOW PAVEMENT

919: 2-1/2" BRASS CAP, IN CASE 0.6' BELOW PAVEMENT

920: 2-1/2" BRASS CAP, IN CASE 0.6' BELOW PAVEMENT

923: 2-1/2" ALUM. POST WITH 3-1/4" ALUM. CAP 0.1" AG.



DATE OF SURVEY Beginning: 11/16/2015 Ending: 6/12/2016	COMPLETED BY CRW Engineering Group, LLC 3940 Arctic Blvd, Suite 300 Anchorage, Alaska 99503	PREPARED FOR Department of Transportation and Public Facilities (DOT&PF) 2301 Peger Road Fairbanks, Alaska 99709
--	--	--

RECORD OF SURVEY

SURVEY CONTROL FOR:
RICHARDSON HWY MP 266-341 PASSING LANES
with
T. 10 S., R. 10 E. - T. 9 S., R. 10 E. - T. 8 S., R. 9 E. - T. 8 S., R. 8 E.
T. 7 S., R. 8 E. - T. 7 S., R. 7 E. - T. 7 S., R. 6 E. - T. 7 S., R. 5 E. - T. 7 S., R. 4 E.
T. 6 S., R. 4 E. - T. 5 S., R. 4 E. - T. 4 S., R. 4 E. - T. 4 S., R. 3 E. - T. 3 S., R. 3 E.
FAIRBANKS MERIDIAN, ALASKA
FAIRBANKS RECORDING DISTRICT

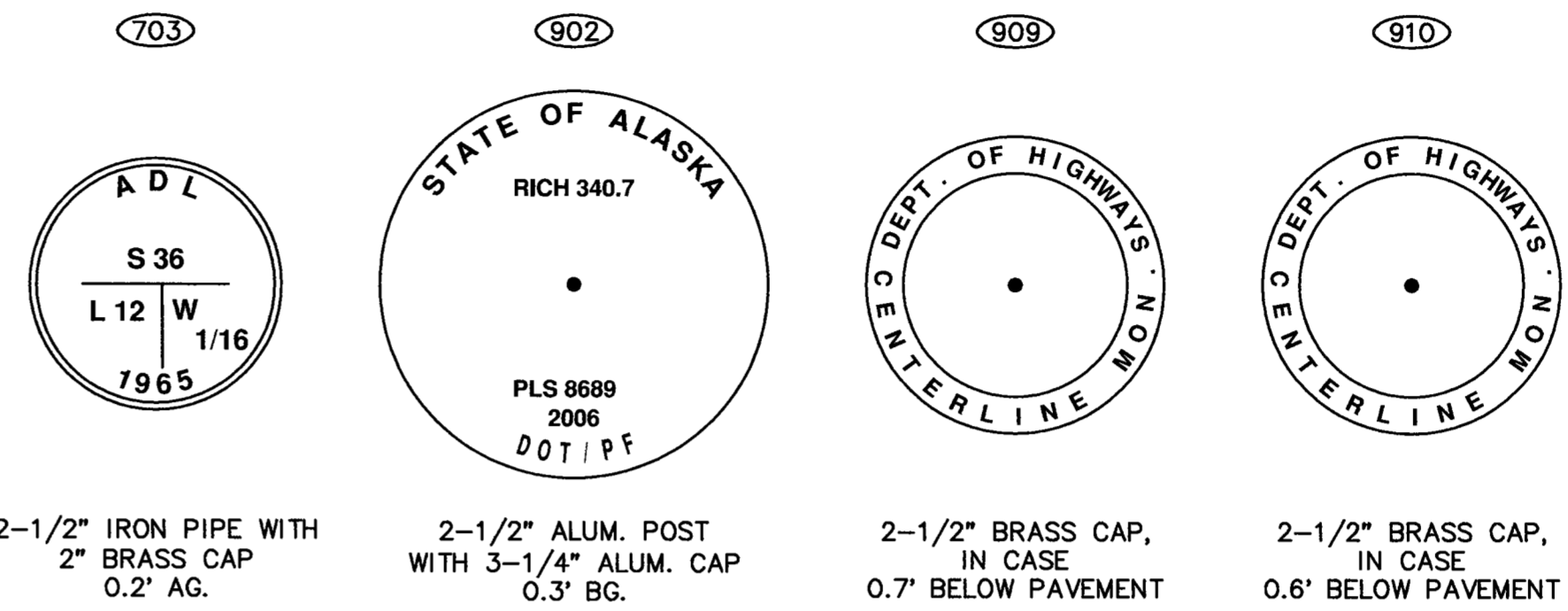
DRAWN BY: BJH 10/2/2017	SCALE: 1" = 15000'	CHECKED BY: MLJ & BWW	CRW FILE NO: 30110.02
----------------------------	-----------------------	--------------------------	--------------------------

Fairbanks 2017-96

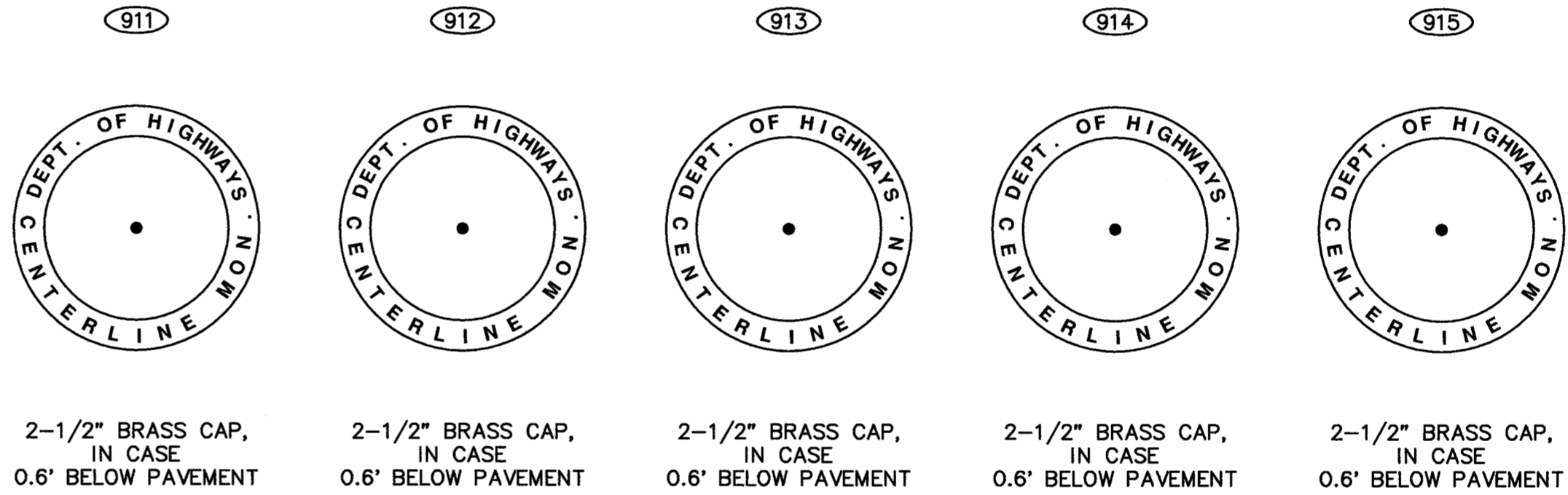
RECOVERED MONUMENT DETAILS - SHEET 3

RECOVERED MONUMENTS - SHEET 5 - T. 4 S., R. 3 E.				
No.	NORTHING	EASTING	DESCRIPTION	SECTION
908	405913.9138	652524.5128	ROWCONC 6X6	1
909	405250.7719	652759.9029	ROWCF 2.5IN BRASS DEPT-HWY PLUMB	1
910	403299.1836	653064.6058	ROWCF 2.5IN BRASS DEPT-HWY PLUMB	1
911	399695.2983	653984.3937	ROWCF 2.5IN BRASS DEPT-HWY PLUMB	12
912	398731.6170	654251.6856	ROWCF 2.5IN BRASS DEPT-HWY PLUMB	12
913	396803.6724	654786.2327	ROWCF 2.5IN BRASS DEPT-HWY PLUMB	12
914	392856.2928	655880.7852	ROWCF 2.5IN BRASS DEPT-HWY PLUMB	13
915	395843.3220	655052.4571	ROWCF 2.5IN BRASS DEPT-HWY PLUMB	12

RECOVERED MONUMENTS - SHEET 5 - T. 3 S., R. 3 E.				
No.	NORTHING	EASTING	DESCRIPTION	SECTION
703	405925.6251	652352.1379	PRIMF 2.0IN BC ADL S36 1965	36
897	412827.7985	652059.7866	ROWCONC 6X6 PLUMB 0.9'AG	25
898	413700.9057	651826.7495	ROWCONC 6X6 PLUMB 1.0'AG	25
899	416177.3356	650695.9388	ROWCONC 6X6 1.2'AG	26
900	416951.1687	650375.8039	ROWCONC 6X6 1.0'AG	23
901	418134.7458	649935.2743	ROWCONC 6X6 PLUMB 1.0'AG	23
902	435897.3058	643372.2598	PRIMF 3.25IN ALUM SOA-PF PLS8689 2006	3
903	411819.4589	652155.1438	ROWCONC 6X6 0.6"AG	25
904	410852.2377	652547.0787	ROWCONC 6X6	36
905	410824.3102	652248.4555	ROWCONC 6X6 0.8'AG	36
906	409155.5400	652687.4660	ROWCONC 6X6 PLUMB 1.1'AG	36
907	406596.8848	652480.1990	ROWCONC 6X6	36
924	427869.9153	646676.7758	ROWCONC 6X6 1.2'AG	11
925	428319.8757	646105.9482	RBARF 0.5IN	10
926	422722.4126	648493.8820	ROWCONC 6X6 PLUMB	14



2-1/2" IRON PIPE WITH 2" BRASS CAP 0.2' AG.
 2-1/2" ALUM. POST WITH 3-1/4" ALUM. CAP 0.3' BG.
 2-1/2" BRASS CAP, IN CASE 0.7' BELOW PAVEMENT
 2-1/2" BRASS CAP, IN CASE 0.6' BELOW PAVEMENT



2-1/2" BRASS CAP, IN CASE 0.6' BELOW PAVEMENT
 2-1/2" BRASS CAP, IN CASE 0.6' BELOW PAVEMENT
 2-1/2" BRASS CAP, IN CASE 0.6' BELOW PAVEMENT
 2-1/2" BRASS CAP, IN CASE 0.6' BELOW PAVEMENT
 2-1/2" BRASS CAP, IN CASE 0.6' BELOW PAVEMENT

LEGEND

ALUM.	ALUMINUM
AG.	ABOVE GROUND LEVEL
BG.	BELOW GROUND LEVEL
ROWCONC	6" X 6" CONCRETE RIGHT OF WAY MONUMENT
ROWCF	RIGHT OF WAY MONUMENT WITH CAP FOUND
PRIMF	PRIMARY MONUMENT FOUND
RBARF	REBAR FOUND

NOTES:

- MONUMENTS REPORTED THIS SHEET NOT PLOTTED HEREON.
- THE RECOVERED MONUMENTS REPORTED THIS SHEET ARE WITHIN:
 TOWNSHIP 4 SOUTH - RANGE 3 EAST FAIRBANKS MERIDIAN - ALASKA
 TOWNSHIP 3 SOUTH - RANGE 3 EAST FAIRBANKS MERIDIAN - ALASKA

2017-96
 Plat #
 Fairbanks
 Rec Dist
 12-20 2017
 Date
 Time 11:31 AM



DATE OF SURVEY	COMPLETED BY	PREPARED FOR
Beginning: 11/16/2015	CRW Engineering Group, LLC 3940 Arctic Blvd, Suite 300 Anchorage, Alaska 99503	Department of Transportation and Public Facilities (DOT&PF) 2301 Peger Road Fairbanks, Alaska 99709
Ending: 6/12/2016		

RECORD OF SURVEY

SURVEY CONTROL FOR:
 RICHARDSON HWY MP 266-341 PASSING LANES
 within
 T. 10 S., R. 10 E. - T. 9 S., R. 10 E. - T. 8 S., R. 9 E. - T. 8 S., R. 8 E.
 T. 7 S., R. 8 E. - T. 7 S., R. 7 E. - T. 7 S., R. 6 E. - T. 7 S., R. 5 E. - T. 7 S., R. 4 E.
 T. 6 S., R. 4 E. - T. 5 S., R. 4 E. - T. 4 S., R. 4 E. - T. 4 S., R. 3 E. - T. 3 S., R. 3 E.
 FAIRBANKS MERIDIAN, ALASKA
 FAIRBANKS RECORDING DISTRICT

DRAWN BY:	SCALE:	CHECKED BY:	CRW FILE NO:
BJH	10/2/2017 1" = 15000'	MLJ & BWW	30110.02