

NOTES

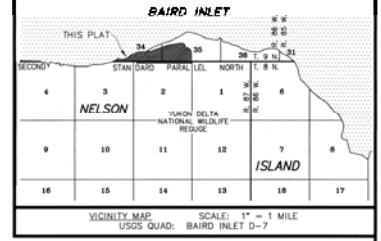
1. THE ERROR OF CLOSURE OF THIS SURVEY DOES NOT EXCEED 1:5000.
2. ALL BEARINGS SHOWN ARE TRUE BEARINGS AS ORIENTED TO THE BASIS OF BEARING AND THE DISTANCES SHOWN ARE REDUCED TO HORIZONTAL FIELD DISTANCES.
3. BASIS OF BEARING: THE BASIS OF BEARING FOR THIS PLAT WAS DETERMINED BY A HIGH PRECISION GPS SURVEY USING LEICA GS14 AND 1200 SERIES RECEIVERS DIFFERENTIALLY CORRECTED AND PROCESSED USING LEICA GEOMATICS OFFICE, VERSION 8.4 SOFTWARE. THE MEASURED MEAN-GEODETIC BEARING BETWEEN "R2" & "R3" WAS HELD FIXED.
4. COORDINATES: THE COORDINATES USED WERE CONSTRAINED TO THE NATIONAL SPATIAL REFERENCE SYSTEM (NSRS) USING CORS STATIONS AB14, BE11 AND AB08, EXTENDED TO THE CORNER LOCATIONS BY STATIS GPS SURVEY METHODS. THE NAD 27 POSITION SHOWN HEREON IS BASED ON USING THE CORSPCON UTILITY.
5. THE NATURAL MEANDERS OF THE MEAN HIGH WATER LINE FORMS THE TRUE BOUNDS OF TRACT A. THE APPROXIMATE LINE OF MEAN HIGH WATER, AS SHOWN, IS FOR AREA COMPUTATIONS ONLY. THE TRUE CORNERS BEING ON THE EXTENSION OF THE SIDELINES AND THEIR INTERSECTION WITH THE NATURAL MEANDERS.
6. THE VERTICAL DATUM OF MEAN LOWER LOW WATER (MLLW) WAS HELD THIS SURVEY AS DETERMINED BY NINE DAYS OF TIDAL OBSERVATIONS BY R&M CONSULTANTS, INC. BETWEEN JUNE 9 AND JUNE 17, 2008. OBSERVATIONS WERE CORRELATED TO NOAA TIDE STATION "VILAGE COVE 946+421Z", LOCATED IN ST. PAUL, ALASKA, AND PROCESSED BY JOHN OSWALD AND ASSOCIATES, LLC. REFERENCE SHOULD BE MADE TO RECORD OF SURVEY, PLAT No. 2013-13 AND SURVEY CONTROL DIAGRAM, PLAT No. 2012-36.
MLLW = 0.00 FEET; MLW = 0.50 FEET; MHW = 4.81 FEET; MHHW = 4.96 FEET
TRANSFORMATION PARAMETERS
MLLW ELEVATIONS CAN BE OBTAINED BY SUBTRACTING 0.72 FEET FROM NAVD88 (GEOID12B) ELEVATIONS.
NAVD88 (GEOID12B) ELEVATIONS CAN BE OBTAINED BY ADDING 0.72 FEET TO MLLW ELEVATIONS.
7. THE FIXED AND LIMITING MHW WAS ESTABLISHED DURING THE SURVEY OF ADL 230403, COMPLETED BY R&M CONSULTANTS, INC., RECORDED AS PLAT No. 2013-13, BETHEL RECORDING DISTRICT. THESE MEANDER COURSES WERE GRANT ADJUSTED THIS SURVEY BY HOLDING THE COMPUTED RECORD TO THE BETWEEN CORNERS 1 AND 2 PER PLAT No. 2013-13 OF N 85°20'33" E, 644.16' AND THE TIE COMPUTED THIS SURVEY OF N 85°19'55" E, 644.38'. THE POSITION COMPUTED THIS SURVEY FOR BOTH CORNER 1 AND 2 FOR THIS PURPOSE WAS COMPUTED ON A LINE FROM WCMC 1 THROUGH WCMC 1 AT RECORD DISTANCE FROM WCMC 1 IN BOTH INSTANCES.
8. THE FIXED AND LIMITING MHW IS LABELED AS L25 THROUGH L33 ON SHEET 2.
9. PRIMARY MONUMENTS SET THIS SURVEY ARE A 2-1/2" X 30" FLANGED ALUMINUM POST WITH A 3-1/4" MAGNETIZED ALUMINUM CAP. A MAGNET WAS DEPOSITED AT THE BASE OF THE ALUMINUM POST. SET WITH THE CAP FLUSH WITH GRADE, ENCLOSED WITH A COLLAR OF STONE WITH A 6" CARSONITE WITNESS POST SET 2' IN THE GROUND WITHIN 1' OF THE MONUMENT.
10. LOT CORNERS, ANGLE POINTS AND POINTS OF CURVATURE OF THIS SURVEY NOT MONUMENTED WITH A PRIMARY MONUMENT AS DESCRIBED ABOVE ARE MONUMENTED WITH A SECONDARY MONUMENT CONSISTING OF A 5/8" X 24" REBAR WITH YELLOW PLASTIC CAP.
11. THE CENTERLINE OF RIGHT-OF-WAYS SHOWN HEREON AND MEANDER COURSES ARE NOT MONUMENTED.
12. TRACTS A, E AND F ARE PARCELS NOT ASSOCIATED WITH ANY BLOCK.
13. THIS PLAT IS SUBJECT TO THE COVENANTS, CONDITIONS, RESERVATIONS AND EASEMENTS CONTAINED WITHIN INTERIM CONVEYANCE No. 1876, RECORDED MAY 17, 2004, DOCUMENT No. 2004-000727-0.
14. THIS VACATION/REPLAT IS IN COMPLIANCE WITH STATE PLATTING RESOLUTION No. 2018-01 APPROVED MARCH 7, 2018, EV-3-291 AND AS 29.40.120.
15. THIS SUBDIVISION IS LOCATED WITHIN AN AREA THAT IS NOT SERVED BY PUBLIC UTILITIES AT THE TIME OF THIS SURVEY.
16. IN ACCORDANCE WITH AS 40.15.300 LEGAL ACCESS TO THIS SUBDIVISION WILL BE BY THE NAVIGABLE WATERS OF BAIRD INLET.

CURVE TABLE

No.	LENGTH	RADIUS	DELTA	CHORD BEARING	CHORD
C1	670.76'	540.00'	71°10'12"	N 35°39'35" W	628.46'
C2	393.20'	540.00'	41°43'13"	N 50°23'05" W	384.58'
C3	277.56'	540.00'	29°26'59"	N 14°47'59" W	274.51'

MEANDER LINE TABLE

No.	BEARING	DISTANCE	No.	BEARING	DISTANCE
L1	N 70°52'19" E	39.90'	L12	N 59°27'52" E	33.14'
L2	N 48°45'08" E	69.00'	L13	N 67°52'45" E	59.46'
L3	N 61°06'57" E	219.54'	L14	N 42°24'50" E	173.75'
L4	N 35°16'47" E	74.27'	L15	N 45°58'00" E	79.29'
L5	N 72°36'38" E	49.58'	L16	N 31°56'19" E	51.50'
L6	S 79°50'48" E	264.99'	L17	N 64°18'03" E	88.27'
L7	S 89°16'30" E	294.18'	L18	N 67°16'37" E	85.91'
L8	N 86°35'06" E	179.27'	L19	N 69°50'46" E	175.88'
L9	N 57°41'05" E	85.83'	L20	N 62°08'20" E	82.15'
L10	N 61°48'59" E	115.12'	L21	N 56°77'06" E	40.19'
L11	N 77°06'00" E	36.74'	L22	N 67°05'39" E	92.35'



CERTIFICATE OF OWNERSHIP AND DEDICATION
 I, THE UNDERSIGNED, CERTIFY THAT NEWTOK NATIVE CORPORATION IS THE OWNER OF MERTARVIK TOWNSITE SUBDIVISION, AS SHOWN ON THIS PLAT. ON BEHALF OF NEWTOK NATIVE CORPORATION, I APPROVE THIS SURVEY AND PLAT AND RESERVE FOR PUBLIC OR PRIVATE USE, AS NOTED, ALL EASEMENTS, PUBLIC UTILITY AREAS, AND RIGHTS OF WAY AS SHOWN AND DESCRIBED ON THIS PLAT.
 JIMMY CHARLES JR.
 CHAIRMAN
 NEWTOK NATIVE CORPORATION
 P.O. BOX 5528
 NEWTOK, ALASKA 99559
 DATE: 6-1-18

NOTARY ACKNOWLEDGEMENT
 SUBSCRIBED AND SWORN TO BEFORE ME THIS 1 DAY OF June, 2018. BY: Jimmy Charles Jr.
 My Commission Expires: Feb. 15, 2022

NOTARY PUBLIC HARRY NEVAK
 STATE OF ALASKA
 My Commission Expires Feb. 13, 2022



LEGEND

- BLM MONUMENT RECOVERED (SEE DETAILS)
- PRIMARY MONUMENT SET THIS SURVEY (SEE NOTE 9 AND TYPICAL)
- SECONDARY MONUMENT SET THIS SURVEY (SEE NOTE 10 AND TYPICAL)
- RECOVERED MONUMENT IDENTIFIER
- BLOCK NUMBER
- RECORD PER BLM PLAT OF T. 8 N., R. 87 W., ACCEPTED: JANUARY 11, 2008
- ALUM. ALUMINUM
- C1 CURVE NUMBER
- CC CLOSING CORNER
- IC INTERIM CONVEYANCE
- RS. RANGES
- STAN. STANDARD
- S.F. SQUARE FEET
- TPS. TOWNSHIPS
- W.C.M.C. WITNESS CORNER TO MEANDER CORNER
- WP WITNESS POINT
- SURVEYED
- UNSURVEYED, PROTRACTED SECTION LINE
- SURVEYED TIE/DETAIL AREA
- EASEMENT
- BOUNDARY LINE VACATED BY THIS PLAT

CRW MERTARVIK
 LS-7839
 2017

CRW
 LS-7839

TYPICAL PRIMARY MONUMENT
 CAP MARKINGS THIS SURVEY (SEE NOTE 9)

TYPICAL SECONDARY MONUMENT
 CAP MARKINGS THIS SURVEY (SEE NOTE 10)

APPROX. MEAN DECLINATION
 N044 7/23/2017

SCALE: 1" = 300'
 1 METER = 3.28033 U.S. SURVEY FEET
 0.4047 HECTARE = 1 U.S. ACRE

BASIS OF COORDINATES
 NAD 83 (2011) EPOCH: 2010.0000
 LAT. 60°49'09.94508"N
 LONG. 149°30'07.59988"W
 NAD 27
 LAT. 60°49'12.78212"N
 LONG. 149°29'59.23467"W

PUBLIC RIGHT OF WAY - DEDICATED THIS PLAT

MIKLUQ ROAD	150 FEET WIDE
ARNAPAGAG STREET	VARIABLE WIDTH
UNGUSRAQ STREET	80 FEET WIDE
QIRAUIN STREET	80 FEET WIDE
QALGAQ STREET	80 FEET WIDE
QILANGAQ STREET	80 FEET WIDE

PUBLIC ACCESS RIGHT-OF-WAY VARIED WIDTH

- 20' WIDE PUBLIC ACCESS: BLOCK 2, BETWEEN LOTS 3 & 4
- 20' WIDE PUBLIC ACCESS: BLOCK 2, BETWEEN LOTS 10 & 11
- 20' WIDE PUBLIC ACCESS: BLOCK 2, BETWEEN LOTS 16 & 17
- 15' WIDE PUBLIC ACCESS: BLOCK 3, AS PLOTTED AND SHOWN HEREON

SURVEYOR'S CERTIFICATE
 I HEREBY CERTIFY THAT I AM PROPERLY REGISTERED AND LICENSED TO PRACTICE LAND SURVEYING IN THE STATE OF ALASKA. THAT THIS PLAT REPRESENTS A SURVEY MADE BY ME OR UNDER MY DIRECT SUPERVISION, THAT THE MONUMENTS SHOWN HEREON ACTUALLY EXIST AS DESCRIBED, AND THAT ALL DIMENSIONS AND OTHER DETAILS ARE CORRECT.
 MICHAEL L. JOKELA
 REGISTERED LAND SURVEYOR
 LS-7839
 REGISTRATION NO.
 5-17-2018
 DATE



PLAT APPROVAL
 THIS PLAT IS APPROVED BY THE COMMISSIONER OF THE DEPARTMENT OF NATURAL RESOURCES, OR THE COMMISSIONER'S DESIGNEE, IN ACCORDANCE WITH AS 40.15.
 Commissioner: *Jennifer A. Senneker* 6/20/2018
 DATE

TAX CERTIFICATE
 THIS SUBDIVISION LIES OUTSIDE OF ANY TAXING AUTHORITY, AT THE TIME OF FILING.

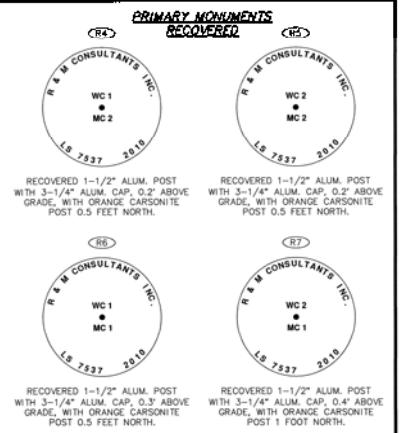
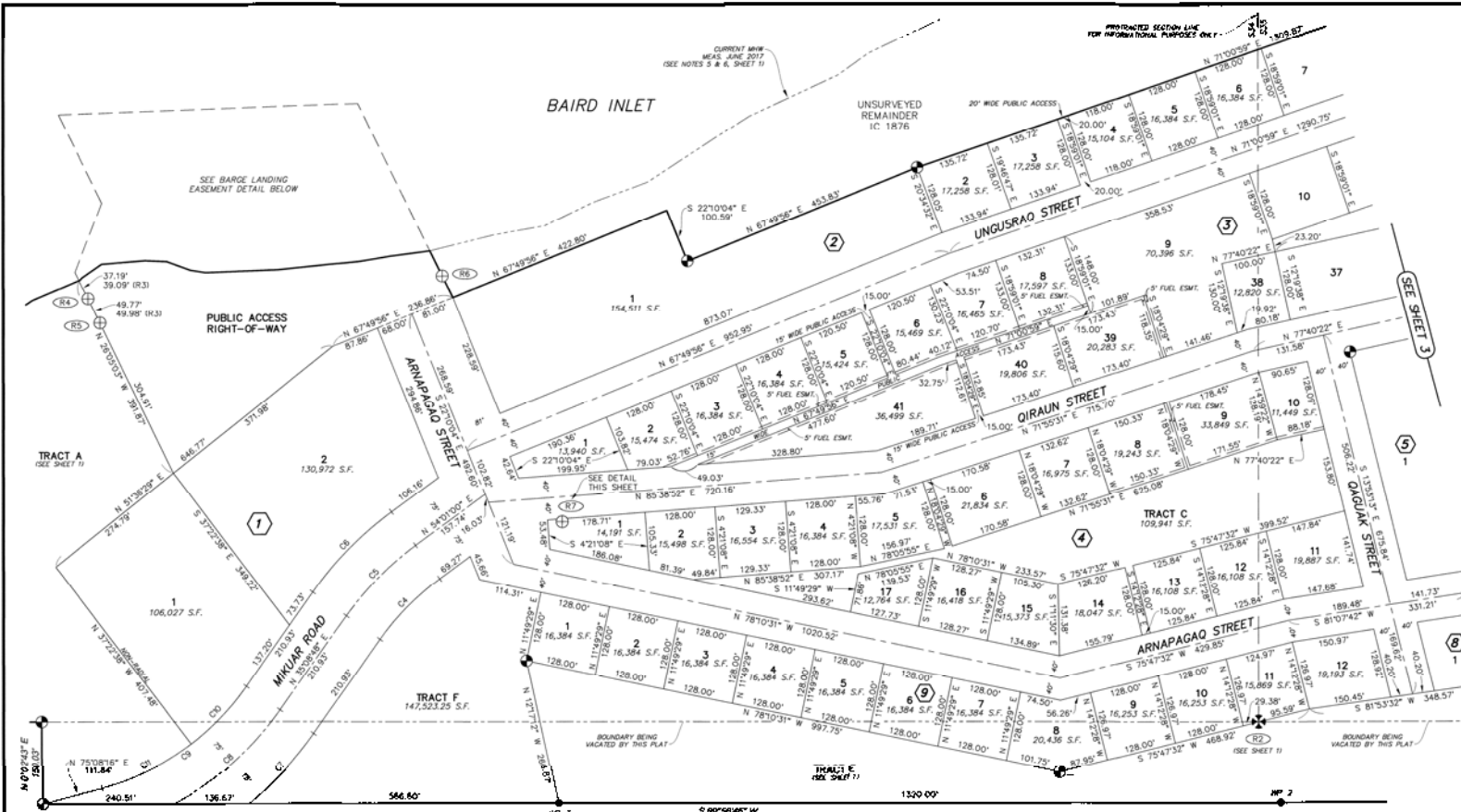
A PLAT OF MERTARVIK TOWNSITE SUBDIVISION
 CREATING:
 TRACT A; LOTS 1-2, BLOCK 2; LOTS 1-41, TRACT B; BLOCK 3; LOTS 1-17, TRACT C; BLOCK 4; LOT 1, BLOCK 5; LOTS 1-13, TRACT D; BLOCK 6; LOTS 1-8, BLOCK 7; LOTS 1-9, BLOCK 8; LOTS 1-12, BLOCK 9; TRACT E; TRACT F

A BOUNDARY VACATION AND REPLAT OF A PORTION OF INTERIM CONVEYANCE No. 1876 (DOCUMENT No. 2004-000727-0)
 LOCATED WITHIN SECTIONS 34 AND 35, TOWNSHIP 9 NORTH, RANGE 86 WEST, AND SECTION 2, TOWNSHIP 9 NORTH, RANGE 87 WEST SEWARD MERIDIAN, ALASKA CONTAINING 166.26 ACRES MORE OR LESS BETHEL RECORDING DISTRICT

PREPARED BY:
 CRW ENGINEERING GROUP LLC
 3940 ARCTIC BLVD., SUITE 300
 ANCHORAGE, AK 99503
 #662-882-46
 907-562-3252

CRW ENGINEERING GROUP LLC

DRAWN: BJH FIELD SURVEY COMPLETION: 8/12/2017 SCALE: 1" = 300'
 CHECKED: MLJ DATE: 4/2/2018 DNR FILE No.: PA20170033/EV-3-291



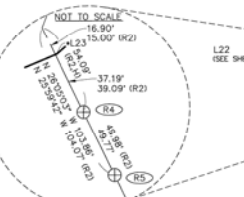
- LEGEND**
- BLM MONUMENT RECOVERED (SEE DETAILS SHEET 1)
 - PRIMARY MONUMENT RECOVERED THIS SURVEY (SEE DETAILS THIS SHEET)
 - PRIMARY MONUMENT SET THIS SURVEY (SEE NOTE 9, TYPICAL SHEET 1)
 - SECONDARY MONUMENT SET THIS SURVEY (SEE NOTE 10, TYPICAL SHEET 1)
 - RECOVERED MONUMENT IDENTIFIER
 - BLOCK NUMBER
 - RECORD PER PLAT No. 2013-13, BETHEL RECORDING DISTRICT
 - HELD THIS SURVEY
 - CALCULATED THIS SURVEY
 - ALUM. ALUMINUM
 - CL CORNER IDENTIFIER
 - CI CURVE NUMBER
 - ESMT. EASEMENT
 - S.F. SQUARE FEET
 - WP WITNESS POINT
 - SURVEYED
 - UNSURVEYED, PROTRACTED SECTION LINE
 - SURVEY TIE
 - EASEMENT
 - CENTERLINE
 - BOUNDARY LINE VACATED BY THIS PLAT

BARGE LANDING EASEMENT DETAIL
SCALE: 1" = 80'

MEANDER LINE TABLE

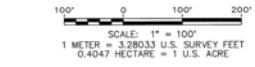
No.	BEARING	DISTANCE
L23	N 67°05'39" E	1.99'
L24	N 50°33'34" E	5.47'

L23: AT BEGINNING OF COURSE, INTERSECTION OF LINE 2-3, ADL 230403.
L24: AT END OF COURSE, BEGINNING OF FIXED AND LIMITING MHW.



FIXED & LIMITING MEANDER LINE TABLE

No.	BEARING	DISTANCE	BEARING	DISTANCE
L25	N 55°19'26" E	43.90'	(R2)	N 55°20'04" E 43.90'
L26	N 55°19'26" E	79.69'	(R2)	N 85°20'04" E 79.66'
L27	S 87°27'24" E	39.84'	(R2)	S 87°26'46" E 39.83'
L28	S 69°47'52" E	45.44'	(R2)	S 69°47'14" E 45.42'
L29	S 80°54'15" E	27.81'	(R2)	S 80°53'37" E 27.80'
L30	N 87°54'57" E	134.07'	(R2)	N 87°55'35" E 134.02'
L31	N 84°00'39" E	149.28'	(R2)	N 84°01'17" E 149.23'
L32	N 80°32'23" E	57.19'	(R2)	N 80°33'01" E 57.17'
L33	N 82°11'53" E	72.32'	(R2)	N 82°12'31" E 72.30'



CURVE TABLE

No.	LENGTH	RADIUS	DELTA	CHORD BEARING	CHORD
C4	156.44'	475.00'	18°52'11"	N 44°34'54" E	155.73'
C5	181.14'	550.00'	18°52'11"	N 44°34'54" E	180.32'
C6	205.84'	625.00'	18°52'11"	N 44°34'54" E	204.91'
C7	176.03'	625.00'	16°08'13"	N 43°12'55" E	175.45'
C8	262.25'	550.00'	27°19'12"	N 48°48'24" E	259.77'
C9	331.54'	475.00'	39°59'28"	N 55°08'32" E	324.85'
C10	146.12'	475.00'	17°37'33"	N 43°57'35" E	145.59'
C11	185.41'	475.00'	22°21'55"	N 63°57'19" E	184.24'

A PLAT OF
MERTARVIK TOWNSITE SUBDIVISION
CREATING:
TRACT A; LOTS 1-2, BLOCK 1; LOTS 1-23, BLOCK 2;
LOTS 1-41, TRACT B, BLOCK 3; LOTS 1-17, TRACT C, BLOCK 4;
LOT 1, BLOCK 5; LOTS 1-13, TRACT D, BLOCK 6; LOTS 1-8, BLOCK 7;
LOTS 1-9, BLOCK 8; LOTS 1-12, BLOCK 9; TRACT E, TRACT F

A BOUNDARY VACATION AND REPLAT OF
A PORTION OF INTERIM CONVEYANCE No. 1876
(DOCUMENT No. 2004-000727-01)

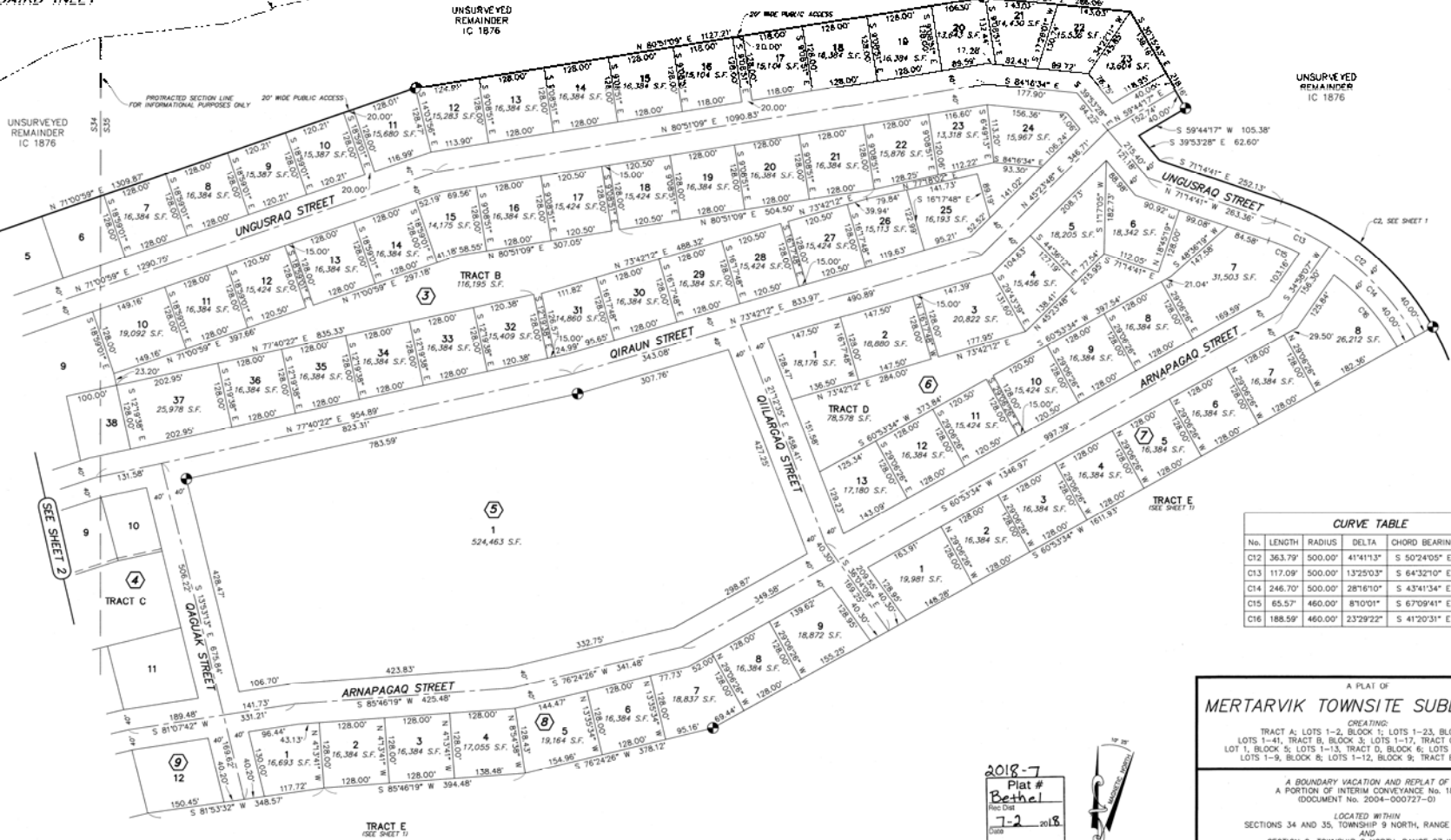
LOCATED WITHIN
SECTIONS 34 AND 35, TOWNSHIP 9 NORTH, RANGE 86 WEST,
SECTION 2, TOWNSHIP 8 NORTH, RANGE 87 WEST
AND
CONTAINING 166.26 ACRES MORE OR LESS
BETHEL RECORDING DISTRICT

PREPARED BY:
CRW ENGINEERING GROUP LLC
3940 ARCTIC BLVD., SUITE 300
ANCHORAGE, AK 99503
#AEC3.882-AK
907-562-3292

DRAWN: BJM FIELD SURVEY COMPLETION: 8/12/2017 SCALE: 1" = 100'
CHECKED: MLJ DATE: 4/2/2018 DNR FILE No.: PA20170033/EV-3-291

BAIRD INLET

CURRENT MAP
MADE JUNE 2017
SEE NOTES 5 & 6 SHEET 1



CURVE TABLE					
No.	LENGTH	RADIUS	DELTA	CHORD BEARING	CHORD
C12	363.79'	500.00'	41°11'33"	S 50°24'05" E	355.82'
C13	117.09'	500.00'	132°20'33"	S 64°32'10" E	116.82'
C14	246.70'	500.00'	28°16'10"	S 43°11'34" E	244.20'
C15	65.57'	460.00'	87°01'01"	S 67°09'41" E	65.51'
C16	188.59'	460.00'	23°29'22"	S 41°20'31" E	187.27'

A PLAT OF
MERTARVIK TOWNSITE SUBDIVISION

CREATING:
TRACT A; LOTS 1-2, BLOCK 1; LOTS 1-23, BLOCK 2;
LOTS 1-41, TRACT B, BLOCK 3; LOTS 1-17, TRACT C, BLOCK 4;
LOT 1, BLOCK 5; LOTS 1-13, TRACT D, BLOCK 6; LOTS 1-8, BLOCK 7;
LOTS 1-9, BLOCK 8; LOTS 1-12, BLOCK 9; TRACT E

A BOUNDARY VACATION AND REPLAT OF
A PORTION OF INTERIM CONVEYANCE No. 1876
(DOCUMENT No. 2004-000727-01)

LOCATED WITHIN
SECTIONS 34 AND 35, TOWNSHIP 9 NORTH, RANGE 86 WEST,
AND
SECTION 2, TOWNSHIP 8 NORTH, RANGE 87 WEST
SEWARD MERIDIAN, ALASKA

CONTAINING 166.26 ACRES MORE OR LESS
BETHEL RECORDING DISTRICT

PREPARED BY:
CRW ENGINEERING GROUP LLC
3940 ARCTIC BLVD., SUITE 300
ANCHORAGE, AK 99503
907-562-3252

DRAWN: B.J.H. FIELD SURVEY COMPLETION: 8/12/2017 SCALE: 1" = 100'
CHECKED: M.J. DATE: 4/2/2018 DMR FILE No.: PA20170033/EV-3-291

- LEGEND**
- PRIMARY MONUMENT SET THIS SURVEY (SEE NOTE 9, TYPICAL, SHEET 1)
 - ① BLOCK NUMBER
 - C1 CURVE NUMBER
 - S.F. SQUARE FEET
 - SURVEYED
 - - - UNSURVEYED, PROTRACTED SECTION LINE
 - CENTERLINE

2018-7
Plat #
Bethel
7-2 2018
Time 4:00 P.M.



Bethel
2018-7

**STATE OF ALASKA
DEPARTMENT OF NATURAL RESOURCES
DIVISION OF MINING, LAND AND WATER
SURVEY SECTION**

STATE PLATTING RESOLUTION No. 2018-01

RESOLUTION APPROVING: The petition, EV-3-291, associated with PA20170033, to replat a portion of the township line common to Sections 34 & 35, Township 9 North, Range 86 West and Sections 2 & 3, Township 8 North, Range 87 West, Seward Meridian.

This replat, located near Newtok, Alaska will facilitate the proposed Mertarvik Townsite Subdivision, which in turn will provide townsite lots for the people of Newtok when the village is relocated to the Mertarvik site.

WHEREAS, A PETITION WAS RECEIVED FROM: Newtok Native Corporation, owner of the subject lands; and,

WHEREAS, the proposed action is located within the Unorganized Borough. Pursuant to AS 40.15.070 the Department of Natural Resources is the platting authority; and,

WHEREAS, seven notices of public hearing were mailed to interested parties, agencies and utility companies. The Notice of Public Hearing was advertised in the Anchorage Daily News January 29th and again on February 5th, 2018; posted on the State of Alaska online Public Notice web site January 26th through February 28th, 2018 and posted at the Newtok, Alaska post office.

WHEREAS, four responses to the notice of public hearing were received, none expressing opposition specific to the proposed replat action; and,

WHEREAS, a public hearing was held at the Anchorage office of the Division of Mining, Land and Water conference room, Suite 650, Atwood Building, 550 W. 7th Ave., on March 1, 2018; and,

WHEREAS, there were no attendees at the public hearing; and,

Bethel
2018-7

WHEREAS, no other comments or adverse objections were received; and,

WHEREAS, approval of the petition will allow the replat action as noted above.

NOW, THEREFORE, BE IT RESOLVED that the State of Alaska, Department of Natural Resources approves the petition as stated above contingent upon complying with the following conditions:

1. Filing of a survey plat in accordance with the provisions of AS 40.15.300 through .380 and 11 AAC 53.600 through .740.
2. Submittal of a current certificate to plat in accordance with the provisions of 11 AAC 53.620.

APPROVED by the State of Alaska, Division of Mining, Land and Water this 7th day of March, 2018.

Gwen Gervelis, PLS
Chief, Survey Section for
Brent Goodrum, Director
Division of Mining, Land & Water

NOTARY'S ACKNOWLEDGMENT

Subscribed and sworn to before me this 7th day of March, 2018.

By: Gwen Gervelis

Ronda Wilson
Notary for the State of Alaska
My Commission Expires: with office



This resolution becomes valid when it is approved by the Division of Mining, Land & Water, and recorded with a plat of survey. The platting shall conform to special survey and platting requirements as deemed necessary by the State of Alaska, Division of Mining, Land and Water at the petitioner's expense. **If the provisions of the Resolution are not completed within 18 months, this Resolution becomes null and void.**