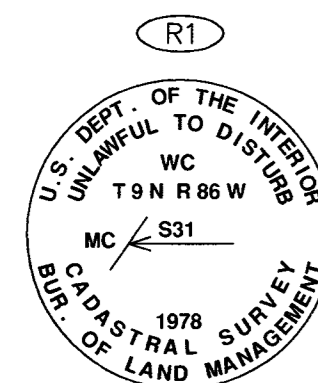
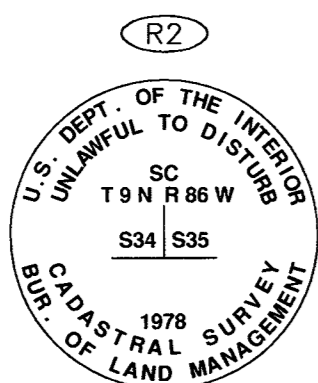


RECOVERED MONUMENTS



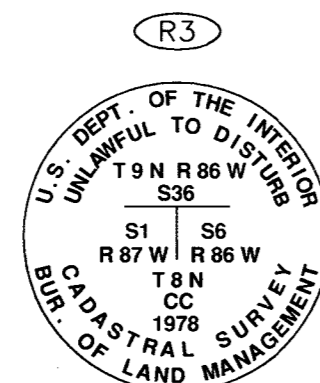
WITNESS COR. TO THE MEANDER COR. OF SEC. 31

RECOVERED 5/8" ALUM. ROD WITH 3-1/4" ALUM. CAP, 0.8' ABOVE GRADE, 5/8" ALUM. ROD WITH CAP, 6' ABOVE GRADE



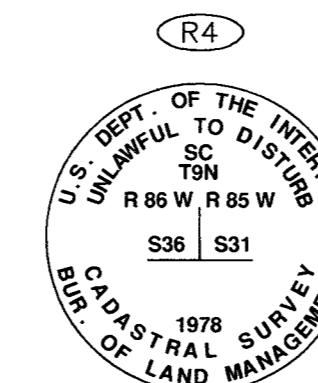
STAN. COR. OF SECS. 34 & 35

RECOVERED 5/8" ALUM. ROD WITH 3-1/4" ALUM. CAP, 0.8' ABOVE GRADE, 5/8" ALUM. ROD WITH TRIANGLE 6.6 FEET NORTH



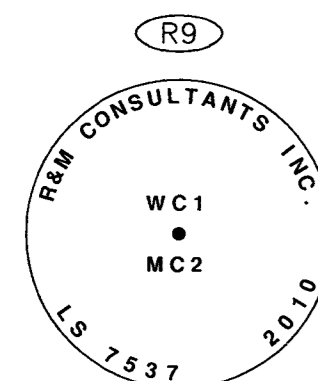
CC OF TPS. 8 N., RS. 86 & 87 W.

RECOVERED 5/8" ALUM. ROD WITH 3-1/4" ALUM. CAP, 0.5' ABOVE GRADE, 5/8" ALUM. ROD 6.6' SOUTH, NO TRIANGLE



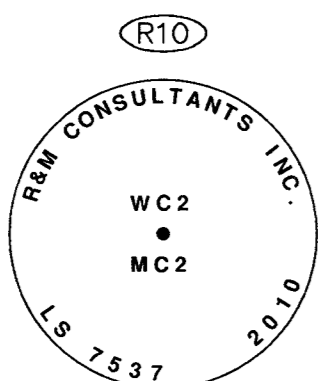
STAN. COR. OF SECS. 31 & 36, T. 9 N., RS. 85 & 86 W.

RECOVERED 5/8" ALUM. ROD WITH 3-1/4" ALUM. CAP, 1.5' ABOVE GRADE, 5/8" ALUM. ROD WITH TRIANGLE 6.6 FEET NORTH



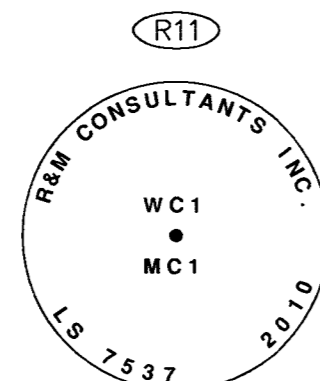
WITNESS CORNER 1, MEANDER CORNER 2

RECOVERED 2-1/2" ALUM. POST WITH 3-1/4" ALUM. CAP, 0.2' ABOVE GRADE, ORANGE CARSONITE POST 0.5' NORTH, REFERENCE PLAT No. 2013-13



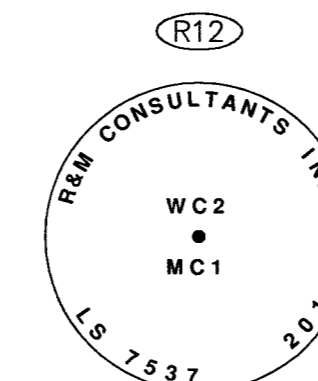
WITNESS CORNER 2, MEANDER CORNER 2

RECOVERED 2-1/2" ALUM. POST WITH 3-1/4" ALUM. CAP, 0.2' ABOVE GRADE, ORANGE CARSONITE POST 0.5' NORTH, REFERENCE PLAT No. 2013-13



WITNESS CORNER 1, MEANDER CORNER 1

RECOVERED 2-1/2" ALUM. POST WITH 3-1/4" ALUM. CAP, 0.3' ABOVE GRADE, ORANGE CARSONITE POST 0.5' NORTH, REFERENCE PLAT No. 2013-13



WITNESS CORNER 2, MEANDER CORNER 1

RECOVERED 2-1/2" ALUM. POST WITH 3-1/4" ALUM. CAP, 0.3' ABOVE GRADE, ORANGE CARSONITE POST 1.0' NORTH, REFERENCE PLAT No. 2013-13

RECOVERED MONUMENTS						
ID	NORTHING	EASTING	ID	NORTHING	EASTING	ELEVATION
R1	599649.6682	781052.5150	R9	600408.0213	799133.2778	19.32
R2	599633.6949	801273.0662	R10	600363.3246	799155.1592	20.04
R3	599644.1108	809256.0964	R11	600449.2458	799780.9211	16.86
R4	599643.0991	811833.5749	R12	600000.0000	800000.0000	46.37

HORIZONTAL CONTROL STATEMENT

COORDINATE SYSTEM: THIS PROJECT IS LOCATED ENTIRELY WITHIN A TRANSVERSE MERCATOR PROJECTION LOCAL COORDINATE SYSTEM, "MERTARVIK LOCAL GROUND" DEVELOPED BY CRW ENGINEERING GROUP, LLC.

BASIS OF COORDINATES: THE BASIS OF COORDINATES IS ON THE CENTRAL MERIDIAN OF "MERTARVIK LOCAL GROUND" AT MONUMENT ID "R12" AND WAS ESTABLISHED BY GPS OBSERVATIONS AND PROCESSING BY THE NGS UTILITY OPUS.

SAID STATION HAS

LOCAL COORDINATES OF: 600,000.0000 N, 800,000.0000 E.

NAD83 (2011) (EPOCH: 2010.0000) ALASKA STATE PLANE, ZONE 8, U.S. SURVEY FOOT COORDINATES OF: 2,494,791.3931 N, 1,906,502.6687 E.

BASIS OF BEARING: THE BASIS OF BEARING OF THIS SURVEY WAS DETERMINED BY A HIGH PRECISION GPS SURVEY USING LEICA GS14 AND 1200 SERIES RECEIVERS DIFFERENTIALLY CORRECTED AND PROCESSED USING LEICA GEOMATICS OFFICE, VERSION 8.4 SOFTWARE.

PROJECTION PARAMETERS (GPS TO LOCAL GROUND):
 HELD MONUMENT ID "R12"
 LATITUDE: 60°49'13.55298" N [NAD83 (2011)]
 LONGITUDE: 164°30'33.27156" W [NAD83 (2011)]
 TRANSVERSE MERCATOR
 CENTRAL MERIDIAN: -164.5092421
 ORIGIN OF LATITUDE: 60.8204313833
 FALSE NORTHING: 600000.0000
 FALSE EASTING: 800000.0000
 SCALE FACTOR: 1.0000037075

NOTES:

- THIS SURVEY DOES NOT CONSTITUTE A SUBDIVISION AS DEFINED BY AS 40.15.290.
- THE FIELD SURVEY WAS COMPLETED BETWEEN JUNE 27, 2017 AND AUGUST 12, 2017 BY CRW ENGINEERING GROUP, LLC IN CONJUNCTION WITH THE FIELD SURVEY FOR THE PROPOSED MERTARVIK TOWNSITE SUBDIVISION.
- HORIZONTAL CONTROL VALUES REPORTED HEREON WERE ESTABLISHED BY STATIC GPS METHODS.
- VERTICAL CONTROL VALUES REPORTED HEREON WERE ESTABLISHED BY STATIC GPS METHODS UNLESS OTHERWISE NOTED.
- DIMENSIONS AND COORDINATES REPORTED HEREON ARE IN U.S. SURVEY FEET.
- BACKGROUND INFORMATION SHOWN HEREON IS INTENDED FOR INFORMATIONAL AND ORIENTATION PURPOSES ONLY.

VERTICAL CONTROL STATEMENT

MEAN LOW LOW WATER (MLLW) AS DETERMINED FROM THE FOLLOWING:

THE VERTICAL DATUM OF MEAN LOWER LOW WATER (MLLW) WAS HELD THIS SURVEY AS DETERMINED BY NINE DAYS OF TIDAL OBSERVATIONS BY R&M CONSULTANTS, INC. BETWEEN JUNE 9 AND JUNE 17, 2008. OBSERVATIONS WERE CORRELATED TO NOAA TIDE STATION "VILLAGE COVE 946-4212", LOCATED IN ST. PAUL ALASKA, AND PROCESSED BY JOHN OSWALD AND ASSOCIATES, LLC. REFERENCE SHOULD BE MADE TO RECORD OF SURVEY, PLAT No. 2013-13 AND SURVEY CONTROL DIAGRAM, PLAT No. 2012-36.

MLLW = 0.00 FEET
 MLW = 0.50 FEET
 MHW = 4.81 FEET
 MHHW = 4.96 FEET

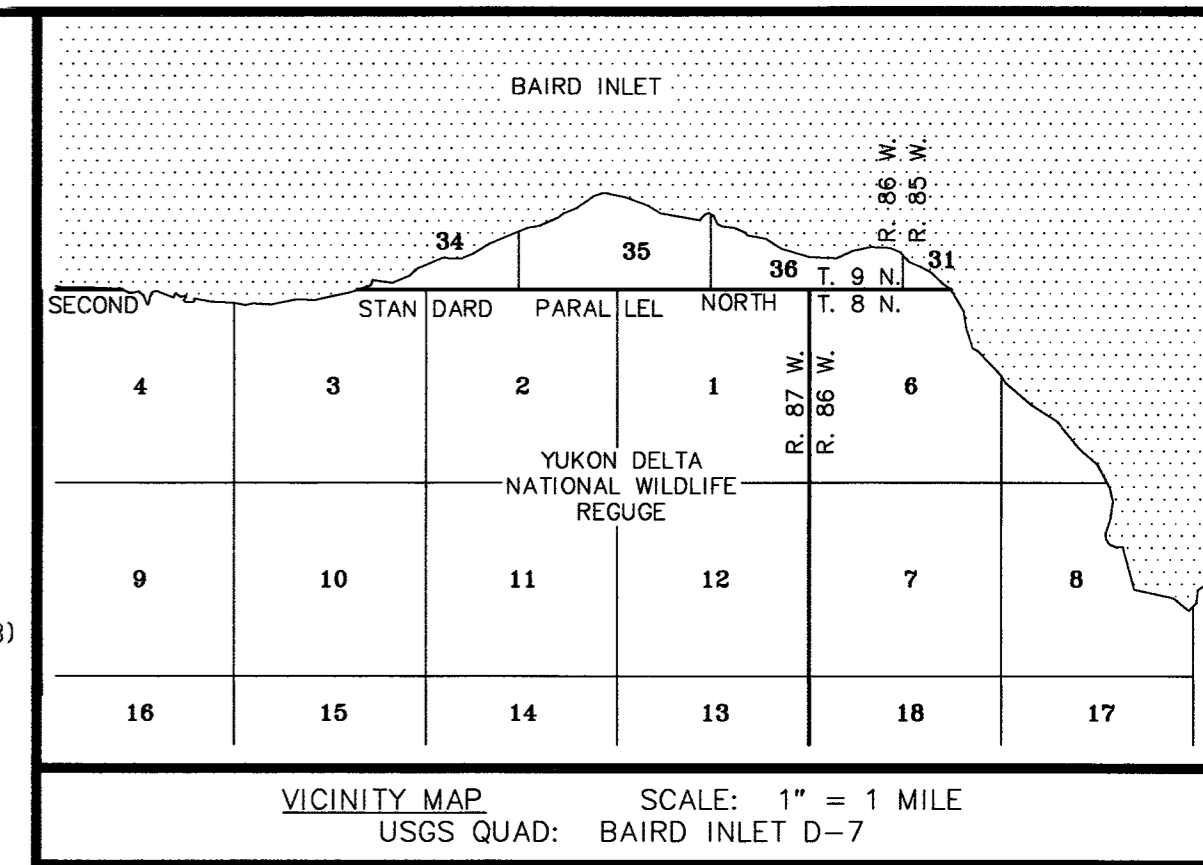
TRANSLATION PARAMETERS

MLLW ELEVATIONS CAN BE OBTAINED BY SUBTRACTING 0.72 FEET TO NAVD88 (GEOID12B) ELEVATIONS.

NAVD88 (GEOID12B) ELEVATIONS CAN BE OBTAINED BY ADDING 0.72 FEET TO MLLW ELEVATIONS.

LEGEND

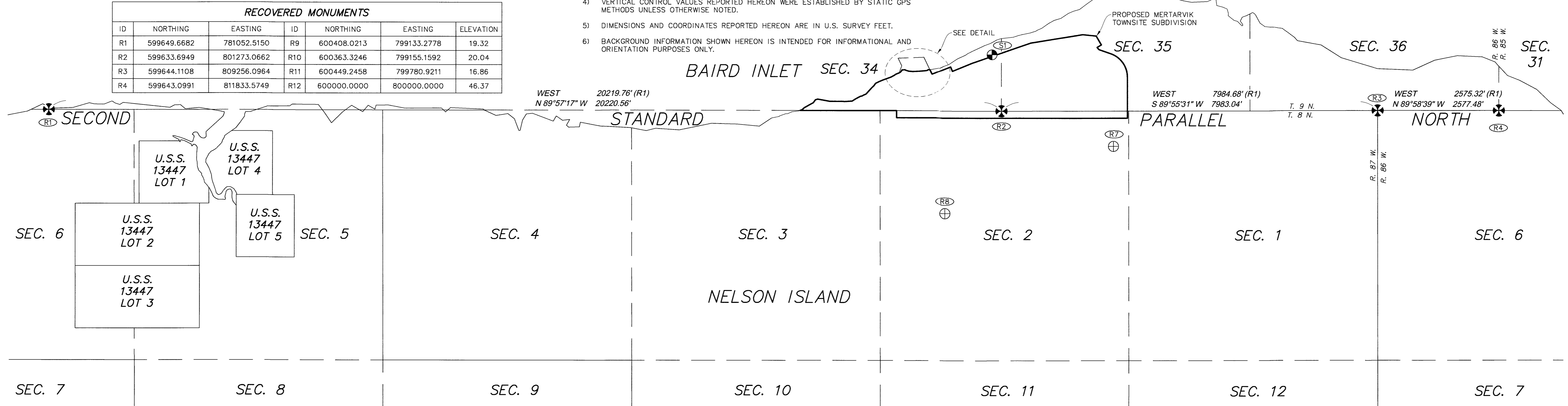
- RECOVERED BLM MONUMENT
- RECOVERED PRIMARY MONUMENT/CONTROL MONUMENT
- SET PRIMARY CONTROL MONUMENT
- RECOVERED MONUMENT IDENTIFIER
- SET MONUMENT IDENTIFIER
- (R1) RECORD PER BLM PLAT OF T. 8 N., R. 87 W., ACCEPTED: JANUARY 11, 2008
- (R2) RECORD PER RECORD OF SURVEY, PLAT No. 2013-13
- ALUM. ALUMINUM CC CLOSING CORNER RS. RANGES
- STAN. STANDARD SS STAINLESS STEEL TPS. TOWNSHIPS



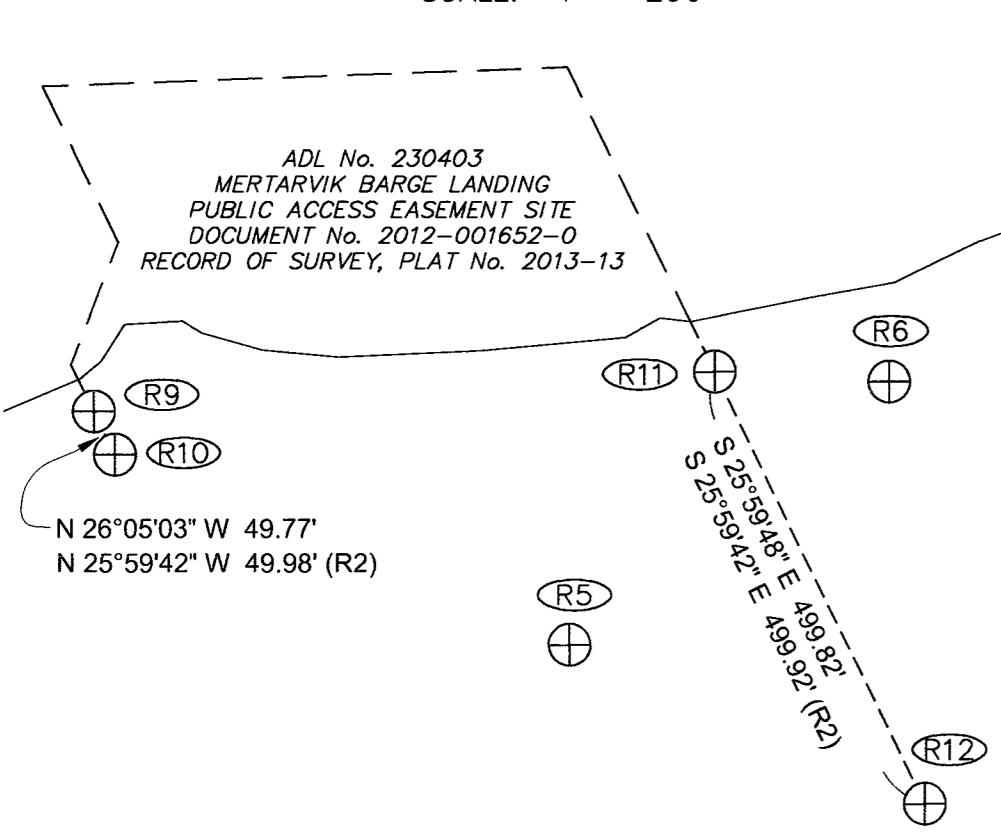
SET PRIMARY CONTROL MONUMENT

MERT-7
 SET 2-1/2" X 30" FLANGED ALUM. POST WITH 3-1/4" ALUM. CAP, ENCLOSED WITH A COLLAR OF STONE, ORANGE CARSONITE POST SET 1' NORTH.

ID	NORTHING	EASTING	ELEVATION
S1	600825.0404	801071.7422	40.61



DETAIL
 SCALE: 1" = 200'



RECOVERED PRIMARY CONTROL MONUMENTS

MERT 1
 RECOVERED 3/4" SS ROD WITH 3-1/4" BRASS CAP IN 4" PVC PIPE, 1.7' ABOVE GRADE, ORANGE CARSONITE POST 2' SOUTH <SET BY R&M CONSULTANTS, INC.> REFERENCE PLAT No. 2009-5

MERT 2
 RECOVERED 3/4" SS ROD WITH 3-1/4" BRASS CAP IN 4" PVC PIPE, 1.0' ABOVE GRADE, ORANGE CARSONITE POST 9' NORTH <SET BY R&M CONSULTANTS, INC.> REFERENCE PLAT No. 2009-5

MERT 3
 RECOVERED 3/4" SS ROD WITH 3-1/4" BRASS CAP IN 4" PVC PIPE, FLUSH WITH GRADE, ORANGE CARSONITE POST ALONGSIDE PIPE <SET BY R&M CONSULTANTS, INC.> REFERENCE PLAT No. 2009-5

MERT 4
 RECOVERED 3/4" SS ROD WITH 3-1/4" BRASS CAP IN 4" PVC PIPE, 0.5' ABOVE GRADE, ORANGE CARSONITE POST ALONGSIDE PIPE <SET BY R&M CONSULTANTS, INC.> REFERENCE PLAT No. 2009-5

TEMPORARY BENCHMARKS

ID	NORTHING	EASTING	ELEVATION
351	600392	801189	83.59
352	600387	801149	84.24
353	600389	801169	84.24
354	600493	801109	75.69

TEMPORARY BENCHMARKS ARE CHISEL "+" STAMPED IN STEEL I-BEAM ON THE EMERGENCY EVACUATION PLATFORM WITHIN SECTION 34. THESE WERE ESTABLISHED BY MEANS OF A CLOSED DIFFERENTIAL LEVEL LOOP. NOT PLOTTED HEREON.

TYPICAL TBM SET THIS SURVEY
 TBM 351

SURVEYOR'S CERTIFICATE

I HEREBY CERTIFY THAT I AM PROPERLY REGISTERED AND LICENSED TO PRACTICE LAND SURVEYING IN THE STATE OF ALASKA, THAT THIS PLAT REPRESENTS A SURVEY MADE BY ME, THAT THE MONUMENTS SHOWN HEREON ACTUALLY EXIST AS DESCRIBED, AND THAT ALL DIMENSIONS AND OTHER DETAILS ARE CORRECT.



RECORD OF SURVEY
 MERTARVIK TOWNSITE SUBDIVISION - SURVEY CONTROL

LOCATED WITHIN SECTIONS 34 AND 35, TOWNSHIP 9 NORTH, RANGE 86 WEST, AND SECTIONS 2 AND 3, TOWNSHIP 8 NORTH, RANGE 87 WEST SEWARD MERIDIAN, ALASKA

BETHEL RECORDING DISTRICT

PREPARED BY: CRW ENGINEERING GROUP LLC, 3940 ARCTIC BLVD., SUITE 300, ANCHORAGE, AK 99503, #AECL882-AK

CRW ENGINEERING GROUP, LLC

DRAWN: BJH	FIELD SURVEY COMPLETION: 8/12/2017	SCALE: 1" = 1000'
CHECKED: BWW	DATE: 2/5/2018	FIELD BOOK: 167
		SHEET: 1 OF 1