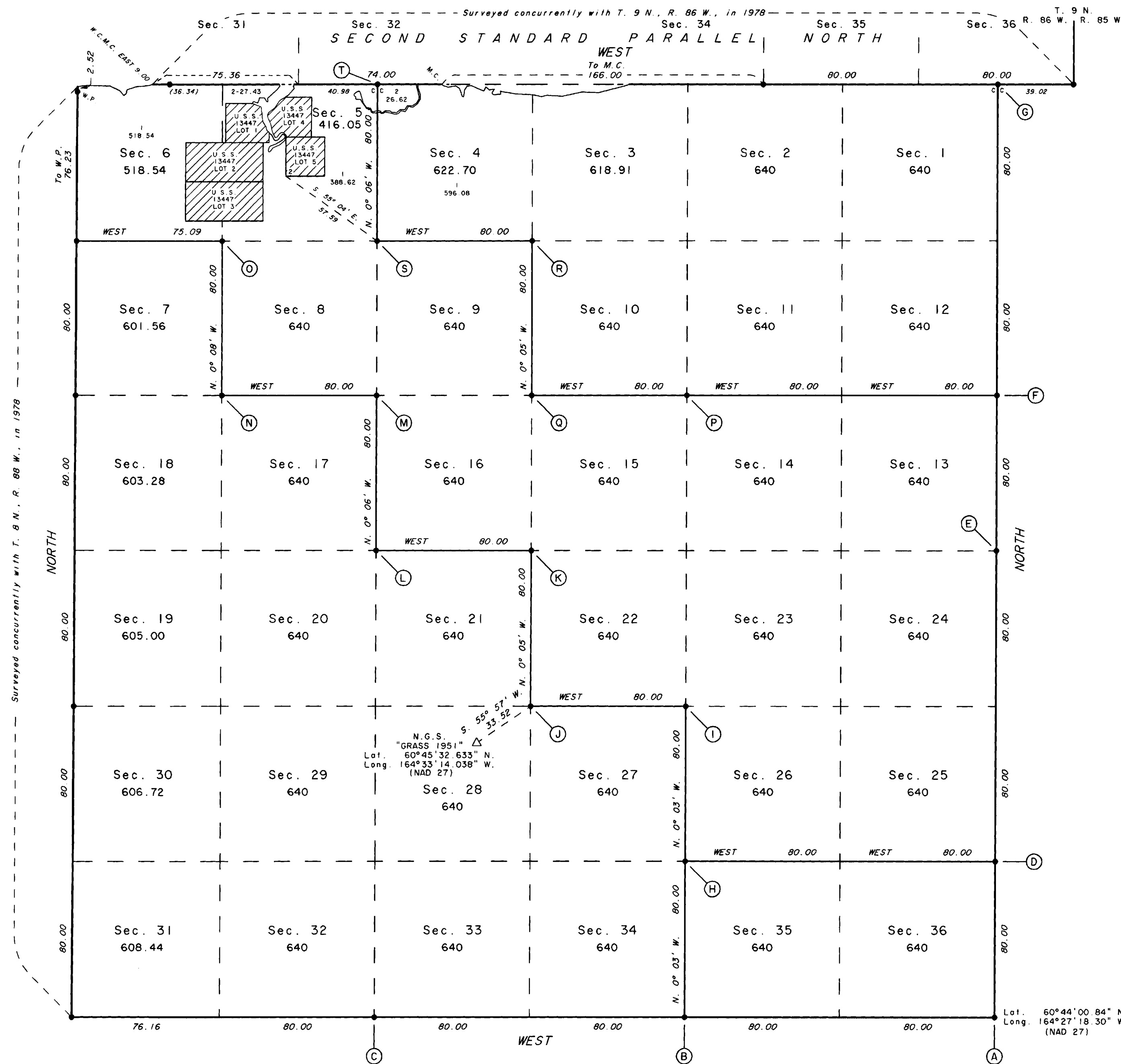


TOWNSHIP 8 NORTH, RANGE 87 WEST, OF THE SEWARD MERIDIAN, ALASKA



The history of surveys is contained in the field notes.

This plat and the field notes of the survey monumentation provide the entire survey record.

This plat and the field notes represent the survey of the south and east boundaries, and a portion of the subdivisional lines of Township 8 North, Range 87 West, Seward Meridian, Alaska.

A portion of the subdivisional lines of the township were surveyed by protraction as shown on this plat.

This survey was executed by Richard R. Bidasolo, Cadastral Surveyor, July 1 through August 25, 1978, in accordance with the specifications set forth in the Manual of Surveying Instructions, 1973, Special Instructions for Group No. 336, Alaska, dated October 17, 1977, approved January 23, 1978, Assignment Instructions for the Survey Requirements for Subdivision of Township (Protracted vs. Surveyed Section Lines) dated April 15, 2005.

The hydrography shown on this plat was photogrammetrically interpreted from Bureau of Land Management black and white orthophotography flown in June 1977 and color infrared photography flown in June 1977 and July 1980 by the National Aeronautics and Space Administration.

The magnetic declination was taken from U.S. Geological Survey quadrangle map "BAIRD INLET (C-7)", ALASKA, 1954.

Access to the survey was by helicopter.

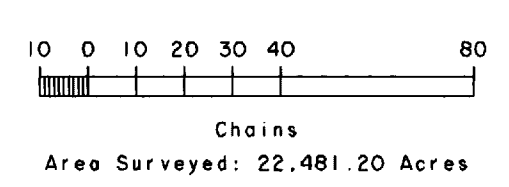
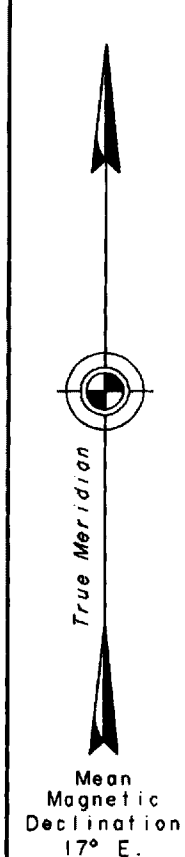
UNITED STATES DEPARTMENT OF THE INTERIOR
BUREAU OF LAND MANAGEMENT
Anchorage, Alaska

This plat is strictly conformable to the approved field notes, and the survey, having been correctly executed in accordance with the requirements of law and the regulations of this Bureau, is hereby accepted.

For the Director

John S. [Signature] January 11, 2008
Date

Deputy State Director for Cadastral Survey,
Alaska



ORIGINAL

UNITED STATES
DEPARTMENT OF THE INTERIOR
BUREAU OF LAND MANAGEMENT

FIELD NOTES
OF
THE MONUMENTATION OF
THE SURVEY OF
THE SOUTH AND EAST BOUNDARIES
AND
A PORTION OF THE SUBDIVISIONAL LINES
AS DEPICTED ON THE PLAT
OF
TOWNSHIP 8 NORTH, RANGE 87 WEST
OF THE SEWARD MERIDIAN,
IN THE STATE OF ALASKA

EXECUTED BY
Richard R. Bidasolo,
Cadastral Surveyor

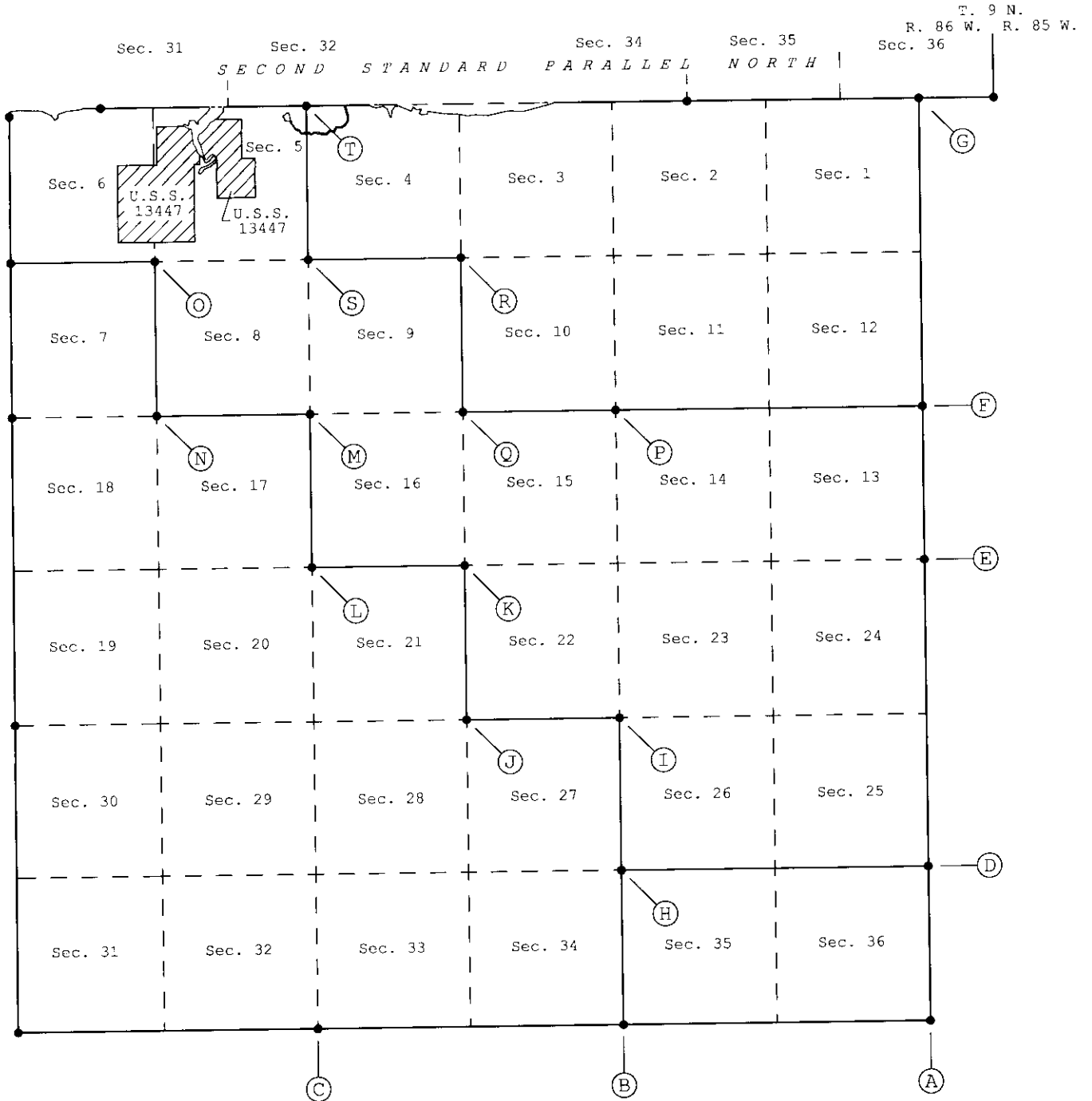
Under special instructions dated October 17, 1977, approved January 23, 1978, which provided for the surveys included under Group No. 336, assignment instructions dated May 17, 1978, and the memorandum for the Survey Requirements for Subdivision of Township (Protracted vs. Surveyed Section Lines) dated April 15, 2005.

Survey commenced: July 1, 1978

Survey completed: August 25, 1978

Index Diagram

Township 8 North, Range 87 West, Seward Meridian, Alaska



T. 8 N., R. 87 W., Seward Meridian, Alaska

<p>Chains</p>	<p>The following field notes describe the monumentation of the survey of the south and east boundaries, and a portion of the subdivisional lines as depicted on the plat of Township 8 North, Range 87 West, Seward Meridian, Alaska.</p> <p>U.S. Survey No. 13447 was surveyed by Gary D. Kowal, Registered Alaska Land Surveyor No. LS-8856, in 2005, and accepted subsequent to this survey and is depicted on the plat based on the official record.</p> <p>Township 8 North, Range 88 West, and Township 9 North, Range 86 West, Seward Meridian, Alaska., were surveyed concurrently by Richard R. Bidasolo, Cadastral Surveyor, in 1978.</p> <p>This survey was executed in accordance with the specifications set forth in the <u>Manual of Surveying Instructions, 1973</u>, the <u>Special Instructions for Group No. 336, Alaska</u>, dated October 17, 1977, approved January 23, 1978, and the memorandum for the Survey Requirements for Subdivision of Township (Protracted vs. Surveyed Section Lines) dated April 15, 2005.</p> <p>Corner positions and the direction of lines of this survey were determined by Auto-Surveyor methods, utilizing control stations established by the National Geodetic Survey, U.S. Army Corps of Engineers, and Bureau of Land Management. The direction of the lines refers to the true meridian.</p> <p>Monuments were set at protracted positions based on the official Bureau of Land Management protraction diagrams.</p> <p>The aluminum triangular markers referred to in the field notes of the survey monumentation are 15 inches long on each side, with fluorescent orange plastic coating attached to 5/8-inch diameter rods extending approximately 2 feet above the ground.</p> <hr/> <p style="text-align: center;">Preliminary Statement</p> <hr/> <p>As no on-the-ground survey between the corners was performed, the bearings and distances are omitted from these field notes and shown only on the plat. Corner descriptions are referenced from the corner on the plat to the body of these notes with a letter designator.</p> <hr/> <p style="text-align: center;"><u>A</u></p> <p>Point for the cor. of Tps. 7 and 8 N., Rs. 86 and 87 W.</p> <p>Drive an alum. rod, 9 ft. long, 5/8 in. diam., 8 ft. in the ground, with alum. cap mkd.</p>
----------------------	--

T. 8 N., R. 87 W., Seward Meridian, Alaska

Chains

T 8 N	
R 87 W	R 86 W
S 36	S 31
S 1	S 6
T 7 N	

1978

No accessories available, pits impractical.

Drive an alum. rod, 6 ft. long, 5/8 in. diam., 4 ft. in the ground, 10 lks. S. of monument with an orange triangular marker on top.

Located in a dry river bed, in open tundra.

B

Point for the cor. of secs. 2, 3, 34 and 35, on the S. bdy. of the Tp.

Drive an alum. rod, 6 ft. long, 5/8 in. diam., 5 ft. in the ground, with alum. cap mkd.

T 8 N	R 87 W
S 34	S 35
S 3	S 2
T 7 N	

1978

No accessories available, pits impractical.

Drive an alum. rod, 6 ft. long, 5/8 in. diam., 4 ft. in the ground, 10 lks. W. of monument with an orange triangular marker on top.

Located on open, N. slope.

C

Point for the cor. of secs. 4, 5, 32 and 33, on the S. bdy. of the Tp.

Drive an alum. rod, 6 ft. long, 5/8 in. diam., 5 ft. in the ground, with alum. cap mkd.

T. 8 N., R. 87 W., Seward Meridian, Alaska

Chains

T 8 N	R 87 W
S 32	S 33
S 5	S 4
T 7 N	

1978

No accessories available, pits impractical.

Drive an alum. rod, 6 ft. long, 5/8 in. diam., 4 ft. in the ground, 10 lks. W. of monument with an orange triangular marker on top.

Located on open, level tundra, with tall grass.

D

Point for the cor. of secs. 25, 30, 31 and 36, on the E. bdy. of the Tp.

Drive an alum. rod, 6 ft. long, 5/8 in. diam., 5 ft. in the ground, with alum. cap mkd.

T 8 N	
R 87 W	R 86 W
S 25	S 30
S 36	S 31

1978

No accessories available, pits impractical.

Drive an alum. rod, 6 ft. long, 5/8 in. diam., 4 ft. in the ground, 10 lks. W. of monument with an orange triangular marker on top.

Located on W. slope, with scattered, shrub willows. Small creek, bears W., 2.00 chs. dist.

E

Point for the cor. of secs. 13, 18, 19 and 24, on the E. bdy. of the Tp.

Drive an alum. rod, 6 ft. long, 5/8 in. diam., 5 1/2 ft. in the ground, with alum. cap mkd.

T. 8 N., R. 87 W., Seward Meridian, Alaska

Chains

T 8 N	
R 87 W	R 86 W
S 13	S 18
S 24	S 19

1978

No accessories available, pits impractical.

Drive an alum. rod, 6 ft. long, 5/8 in. diam., 4 ft. in the ground, 10 lks. W. of monument with an orange triangular marker on top.

Located on W. slope, in open tundra.

F

Point for the cor. of secs. 7, 12, 13 and 18, on the E. bdy. of the Tp.

Drive an alum. rod, 6 ft. long, 5/8 in. diam., 5 ft. in the ground, with alum. cap mkd.

T 8 N	
R 87 W	R 86 W
S 12	S 7
S 13	S 18

1978

No accessories available, pits impractical.

Drive an alum. rod, 6 ft. long, 5/8 in. diam., 4 ft. in the ground, 10 lks. W. of monument with an orange triangular marker on top.

Located on gentle W. slope, in open tundra.

G

Point for the closing cor. of Tps. 8 N., Rs. 86 and 87 W., on the 2nd Stan. Par. N.

Drive an alum. rod, 6 ft. long, 5/8 in. diam., 5 1/2 ft. in the ground, with alum. cap mkd.

T. 8 N., R. 87 W., Seward Meridian, Alaska

Chains	<p style="text-align: center;">T 9 N R 86 W <u>S 36</u> S 1 S 6 R 87 W R 86 W T 8 N CC 1978</p> <p>No accessories available, pits impractical.</p> <p>Drive an alum. rod, 6 ft. long, 5/8 in. diam., 4 ft. in the ground, 10 lks. S. of monument with an orange triangular marker on top.</p> <p>Located on N. slope, in open tundra.</p>
	<p style="text-align: center;"><u>H</u></p> <p>Point for the cor. of secs. 26, 27, 34 and 35.</p> <p>Drive an alum. rod, 9 ft. long, 5/8 in. diam., 8 ft. in the ground, with alum. cap mkd.</p> <p style="text-align: center;">T 8 N R 87 W <u>S 27 S 26</u> S 34 S 35 1978</p> <p>No accessories available, pits impractical.</p> <p>Drive an alum. rod, 6 ft. long, 5/8 in. diam., 4 ft. in the ground, 10 lks. W. of monument with an orange triangular marker on top.</p> <p>Located on gentle E. slope, in open, barren tundra.</p>
	<p style="text-align: center;"><u>I</u></p> <p>Point for the cor. of secs. 22, 23, 26 and 27.</p> <p>Drive an alum. rod, 6 ft. long, 5/8 in. diam., 5 1/2 ft. in the ground, with alum. cap mkd.</p> <p style="text-align: center;">T 8 N R 87 W <u>S 22 S 23</u> S 27 S 26 1978</p> <p>No accessories available, pits impractical.</p>

T. 8 N., R. 87 W., Seward Meridian, Alaska

Chains

Drive an alum. rod, 6 ft. long, 5/8 in. diam., 4 ft. in the ground, 10 lks. W. of monument with an orange triangular marker on top.

Located on open, N. slope, with scattered brush.

J

Point for the cor. of secs. 21, 22, 27 and 28.

Drive an alum. rod, 6 ft. long, 5/8 in. diam., 5 ft. in the ground, with alum. cap mkd.

T 8 N	R 87 W
S 21	S 22
S 28	S 27

1978

No accessories available, pits impractical.

Drive an alum. rod, 6 ft. long, 5/8 in. diam., 4 ft. in the ground, 10 lks. W. of monument with an orange triangular marker on top.

Located in open, rolling tundra.

K

Point for the cor. of secs. 15, 16, 21 and 22.

Drive an alum. rod, 6 ft. long, 5/8 in. diam., 5 ft. in the ground, with alum. cap mkd.

T 8 N	R 87 W
S 16	S 15
S 21	S 22

1978

No accessories available, pits impractical.

Drive an alum. rod, 6 ft. long, 5/8 in. diam., 4 ft. in the ground, 10 lks. W. of monument with an orange triangular marker on top.

Located on S. slope, with widely scattered, shrub willows.

T. 8 N., R. 87 W., Seward Meridian, Alaska

ChainsL

Point for the cor. of secs. 16, 17, 20 and 21.

Drive an alum. rod, 6 ft. long, 5/8 in. diam., 5 ft. in the ground, with alum. cap mkd.

T 8 N	R 87 W
S 17	S 16
S 20	S 21

1978

No accessories available, pits impractical.

Drive an alum. rod, 6 ft. long, 5/8 in. diam., 4 ft. in the ground, 10 lks. W. of monument with an orange triangular marker on top.

Located on gentle N. slope, in open tundra.

M

Point for the cor. of secs. 8, 9, 16 and 17.

Drive an alum. rod, 6 ft. long, 5/8 in. diam., 4 ft. in the ground, with alum. cap mkd.

T 8 N	R 87 W
S 8	S 9
S 17	S 16

1978

No accessories available, pits impractical.

Drive an alum. rod, 6 ft. long, 5/8 in. diam., 4 ft. in the ground, 10 lks. W. of monument with an orange triangular marker on top.

Located on S. slope, in open tundra.

N

Point for the cor. of secs. 7, 8, 17 and 18.

Drive an alum. rod, 9 ft. long, 5/8 in. diam., 8 ft. in the ground, with alum. cap mkd.

T. 8 N., R. 87 W., Seward Meridian, Alaska

Chains

T 8 N R 87 W	
S 7	S 8
S 18	S 17

1978

No accessories available, pits impractical.

Drive an alum. rod, 6 ft. long, 5/8 in. diam., 4 ft. in the ground, 10 lks. W. of monument with an orange triangular marker on top.

Located on open, rolling tundra, with 3 ft. high brush.

O

Point for the cor. of secs. 5, 6, 7 and 8.

Drive an alum. rod, 6 ft. long, 5/8 in. diam., 5 ft. in the ground, with alum. cap mkd.

T 8 N R 87 W	
S 6	S 5
S 7	S 8

1978

No accessories available, pits impractical.

Drive an alum. rod, 6 ft. long, 5/8 in. diam., 4 ft. in the ground, 10 lks. W. of monument with an orange triangular marker on top.

Located on gentle sloping tundra, with scattered brush.

P

Point for the cor. of secs. 10, 11, 14 and 15.

Drive an alum. rod, 6 ft. long, 5/8 in. diam., 5 ft. in the ground, with alum. cap mkd.

T 8 N R 87 W	
S 10	S 11
S 15	S 14

1978

No accessories available, pits impractical.

Drive an alum. rod, 6 ft. long, 5/8 in. diam., 4 ft. in the

T. 8 N., R. 87 W., Seward Meridian, Alaska

Chains	<p>ground, 10 lks. W. of monument with an orange triangular marker on top.</p> <p>Located in open, level tundra.</p> <hr/> <p style="text-align: center;"><u>Q</u></p> <p>Point for the cor. of secs. 9, 10, 15 and 16.</p> <p>Drive an alum. rod, 9 ft. long, 5/8 in. diam., 8 1/2 ft. in the ground, with alum. cap mkd.</p> <table style="margin-left: auto; margin-right: auto;"> <tr><td>T 8 N</td><td>R 87 W</td></tr> <tr><td>S 9</td><td>S 10</td></tr> <tr><td>S 16</td><td>S 15</td></tr> </table> <p style="text-align: center;">1978</p> <p>No accessories available, pits impractical.</p> <p>Drive an alum. rod, 6 ft. long, 5/8 in. diam., 4 ft. in the ground, 10 lks. W. of monument with an orange triangular marker on top.</p> <p>Located on gentle S. slope, with scattered willows.</p> <hr/> <p style="text-align: center;"><u>R</u></p> <p>Point for the cor. of secs. 3, 4, 9 and 10.</p> <p>Drive an alum. rod, 6 ft. long, 5/8 in. diam., 5 ft. in the ground, with alum. cap mkd.</p> <table style="margin-left: auto; margin-right: auto;"> <tr><td>T 8 N</td><td>R 87 W</td></tr> <tr><td>S 4</td><td>S 3</td></tr> <tr><td>S 9</td><td>S 10</td></tr> </table> <p style="text-align: center;">1978</p> <p>No accessories available, pits impractical.</p> <p>Drive an alum. rod, 6 ft. long, 5/8 in. diam., 4 ft. in the ground, 10 lks. W. of monument with an orange triangular marker on top.</p> <p>Located on rocky N. slope, with scattered, low brush.</p> <hr/> <p style="text-align: center;"><u>S</u></p> <p>Point for the cor. of secs. 4, 5, 8 and 9.</p>	T 8 N	R 87 W	S 9	S 10	S 16	S 15	T 8 N	R 87 W	S 4	S 3	S 9	S 10
T 8 N	R 87 W												
S 9	S 10												
S 16	S 15												
T 8 N	R 87 W												
S 4	S 3												
S 9	S 10												

T. 8 N., R. 87 W., Seward Meridian, Alaska

Chains

Drive an alum. rod, 6 ft. long, 5/8 in. diam., 4 1/2 ft. in the ground, with alum. cap mkd.

T 8 N		R 87 W	
S 5		S 4	
<hr style="width: 50%; margin: 0 auto;"/>			
S 8		S 9	

1978

No accessories available, pits impractical.

Drive an alum. rod, 6 ft. long, 5/8 in. diam., 4 ft. in the ground, 10 lks. W. of monument with an orange triangular marker on top.

This monument was recovered by Gary D. Kowal in 2005 during the survey of U.S. Survey Nos. 13447 and this description is found on that plat.

Located on E. slope, in grassy tundra.

T

Point for the closing cor. of secs. 4 and 5, on the 2nd Stan. Par. N.

Drive an alum. rod, 12 ft. long, 5/8 in. diam., 11 ft. in the ground, with alum. cap mkd.

T 9 N		R 86 W	
<hr style="width: 50%; margin: 0 auto;"/>			
S 32			
S 5		S 4	
T 8 N		R 87 W	

CC

1978

No accessories available, pits impractical.

Drive an alum. rod, 6 ft. long, 5/8 in. diam., 4 ft. in the ground, 10 lks. S. of monument with an orange triangular marker on top.

Located on level, swampy tundra.

UNITED STATES
DEPARTMENT OF THE INTERIOR
BUREAU OF LAND MANAGEMENT

FIELD ASSISTANTS

NAMES	CAPACITY
Steven E. Woods	Land Surveyor
Tommy A. Noble	Land Surveyor
Terry L. Mesick	Land Surveyor
Kevin P. Akin	Surveying Aid
Bruce C. Jamieson	Surveying Aid
Terry L. Bates	Surveying Aid
Lois A. Stevens	Surveying Aid
Pat N. Johnson	Surveying Aid
Robert K. Walkins	Surveying Aid

CERTIFICATE OF SURVEY

I, Richard R. Bidasolo, Cadastral Surveyor, HEREBY CERTIFY upon honor that, in pursuance of Special Instructions bearing the date of the 17th day of October, 1977, I have surveyed the south and east boundaries and a portion of the subdivisional lines of Township 8 North, Range 87 West, Seward Meridian, in the State of Alaska, which is represented on the survey plat and in the foregoing field notes of the survey monumentation as having been executed by me, and under my direction; and that said survey has been made in strict conformity with said special instructions, and the Manual of Instructions for the Survey of the Public Lands of the United States, and in the specific manner described on the survey plat and in the foregoing field notes of the survey monumentation.

12/19/07
(Date)

Richard R Bidasolo
(Cadastral Surveyor)

CERTIFICATE OF APPROVAL

BUREAU OF LAND MANAGEMENT
Anchorage, Alaska

The foregoing field notes of the survey monumentation described in the Certificate of the Survey above, executed by Richard R. Bidasolo, Cadastral Surveyor, having been critically examined and found correct, are hereby approved.

1/11/2008
(Date)

Jela Sengle
(Deputy State Director for Cadastral Survey, Alaska)

CERTIFICATE OF TRANSCRIPT

BUREAU OF LAND MANAGEMENT
Anchorage, Alaska

I CERTIFY that the foregoing transcript of the field notes of the above described survey is a true copy of the original field notes.

~~_____
(Date)~~

~~_____
(Deputy State Director for Cadastral Survey, Alaska)~~