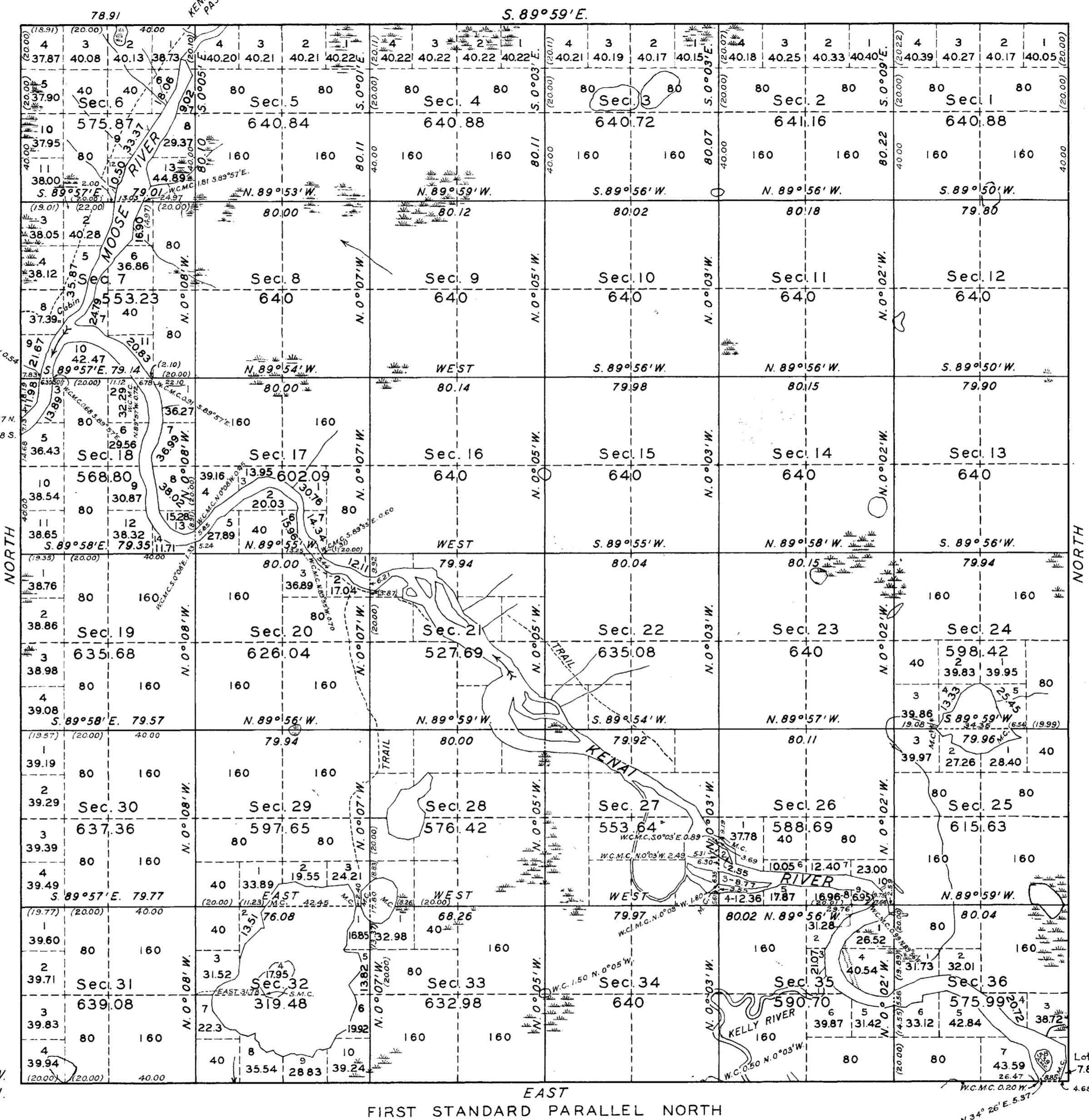


# TOWNSHIP NO. 5 NORTH, RANGE NO. 8 WEST OF THE SEWARD MERIDIAN, ALASKA

IN TWO SHEETS SHEET NO. 1



THE AREA IS GENERALLY COVERED WITH A FAIR STAND OF SPRUCE, BIRCH, AND ASPEN TIMBER WHICH IS OF LITTLE COMMERCIAL VALUE.

FOR DETAILS IN SECTIONS 21, 22, 27, AND 28, SEE SHEET 2.

Long. 150° 46' 09" W.  
Lat. 60° 28' 14" N.

SCALE: 40 CHAINS TO AN INCH

MEAN MAGNETIC DECLINATION 26° 30' E. AREA SURVEYED: 21895.00 ACRES

LINES DESIGNATED	BY WHOM SURVEYED	GROUP		MILEAGE		WHEN SURVEYED	
		NO.	DATE	MLS.	CHS.	BEGUN	COMPLETED
EXTERIOR	FLOYD G. BETTS, C.E.	51	JULY 24, 1935	17	78.91	AUG. 7, 1939	OCT. 10, 1939
SUBDIVISION	LEONARD M. BERLIN, SURVEYOR	"	"	59	62.31	"	"
MEANDER	"	"	"	37	4.16	"	"
MISCELLANEOUS	"	"	"	2	0.54	"	"

OFFICE OF SUPERVISOR OF SURVEYS  
DENVER, COLORADO, JUNE 16, 1943.

THE ABOVE PLAT OF TOWNSHIP NO. 5 NORTH, RANGE NO. 8 WEST, OF THE SEWARD MERIDIAN, ALASKA, IS STRICTLY CONFORMABLE TO THE FIELD NOTES OF THE SURVEY THEREOF WHICH HAVE BEEN EXAMINED AND APPROVED.

*Russell H. Allen*  
ACTING ASSISTANT SUPERVISOR OF SURVEYS.

UNITED STATES  
DEPARTMENT OF THE INTERIOR  
GENERAL LAND OFFICE  
WASHINGTON, D.C., JUNE 24, 1943.

THE SURVEY REPRESENTED BY THIS PLAT HAVING BEEN CORRECTLY EXECUTED IN ACCORDANCE WITH THE REQUIREMENTS OF LAW AND THE REGULATIONS OF THIS OFFICE, IS HEREBY ACCEPTED.

*Joel David Wolfson*  
ASSISTANT COMMISSIONER.